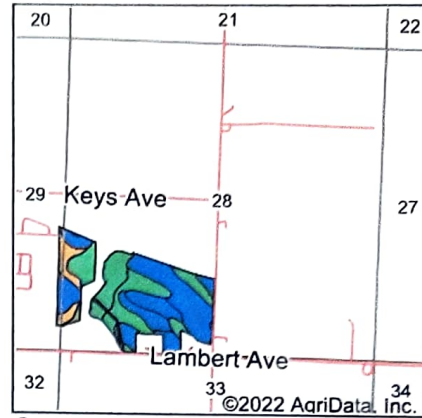
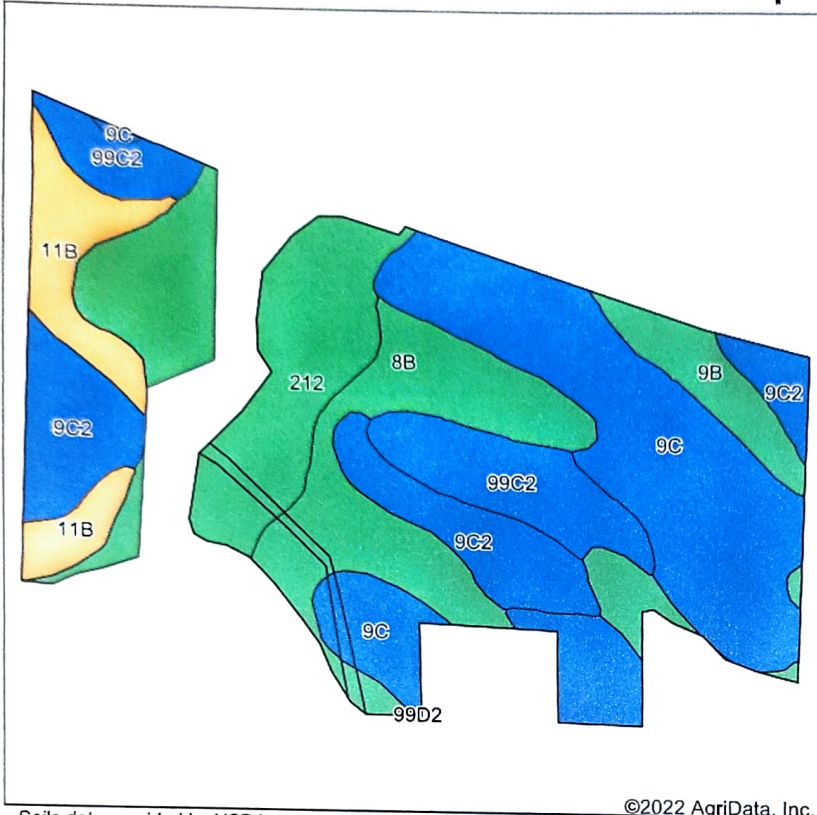


Soils Map



State: **Iowa**
 County: **Mills**
 Location: **28-72N-41W**
 Township: **Silver Creek**
 Acres: **74.73**
 Date: **7/16/2022**



Soils data provided by USDA and NRCS.

©2022 AgriData, Inc.

Area Symbol: IA129, Soil Area Version: 32

| Code | Soil Description | Acres | Percent of field | CSR2 Legend | Non-Irr Class *c | CSR2** | CSR | *n NCCPI Soybeans | |
|-------------------------|---|-------|------------------|-------------|------------------|-------------|-------------|-------------------|----------------|
| 9C | Marshall silty clay loam, 5 to 9 percent slopes | 21.80 | 29.2% | | IIIe | 89 | 68 | 81 | |
| 212 | Kennebec silt loam, 0 to 2 percent slopes, occasionally flooded | 14.45 | 19.3% | | Iw | 91 | 90 | 93 | |
| 8B | Judson silty clay loam, deep loess, 2 to 5 percent slopes | 10.99 | 14.7% | | Ile | 92 | 84 | 81 | |
| 9C2 | Marshall silty clay loam, 5 to 9 percent slopes, eroded | 9.76 | 13.1% | | IIIe | 87 | 66 | 70 | |
| 99C2 | Exira silty clay loam, 5 to 9 percent slopes, eroded | 7.44 | 10.0% | | IIIe | 87 | 63 | 71 | |
| 11B | Colo-Judson silty clay loams, 0 to 5 percent slopes, occasionally flooded | 5.64 | 7.5% | | IIw | 80 | 70 | 81 | |
| 9B | Marshall silty clay loam, 2 to 5 percent slopes | 4.65 | 6.2% | | Ile | 95 | 83 | 77 | |
| Weighted Average | | | | | | 2.33 | 89.1 | 74.9 | *n 80.6 |

**IA has updated the CSR values for each county to CSR2.

*n: The aggregation method is "Weighted Average using all components"

*c: Using Capabilities Class Dominant Condition Aggregation Method

Soils data provided by USDA and NRCS.