

# Rear Axle Drive MFA RDM

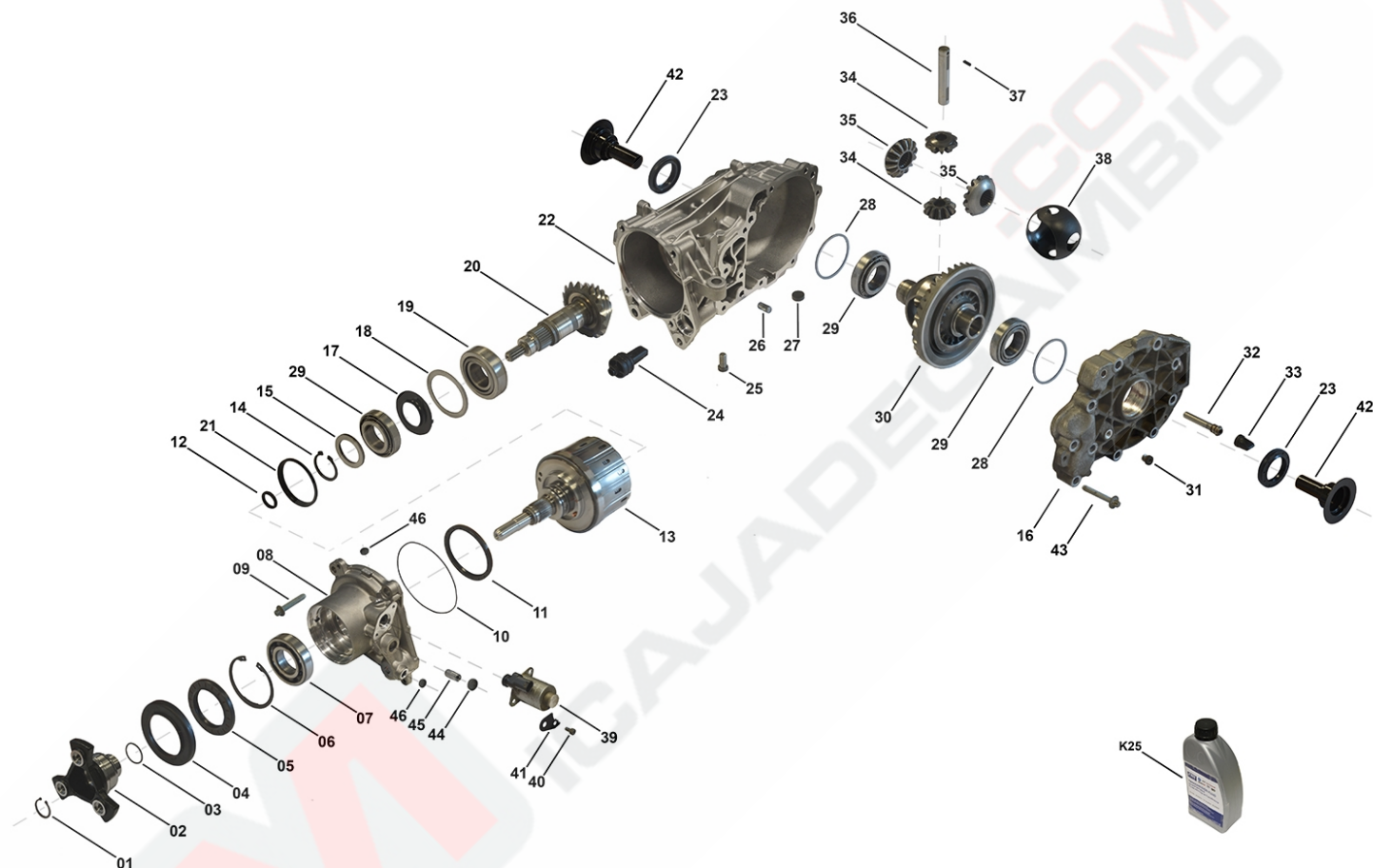
RD00097, RD00098

OEM No: A1763503100; A2463502402

## Brands

Brand	Modelseries
Mercedes-Benz	A-Class; B-Class

## List of parts



Pos	Part number	OEM no	Quantity	Product name	Info
'I01	RD00097	A2463502402		OE References	A2463506900, A2463501802, A2463502402
'I02	RD00098	A1763503100		OE References	A1763501900, A1763502800, A1763502900, A1763503100
'K01	SP02461		1 piece	Bearing Kit	Contains position 07, 19, 29
'K02	SP02462		1 piece	Sealing Kit	Contains position 03, 05, 10, 11, 12, 23, 25, 31
'K04	SP02463	A2463507100	1 piece	Flange Kit	Contains position 02, 04
01	SP01475		1 piece	Retaining Ring	
02	Only available in K04		1 piece	Flange	
03	Only available in K02		1 piece	Seal O-Ring	
04	SP01474	A2463531300	1 piece	Slinger	
05	SP02153	A2469970146	1 piece	Radial Seal Ring	

# Rear Axle Drive MFA RDM

RD00097, RD00098

OEM No: A1763503100; A2463502402

## List of parts

Pos	Part number	OEM no	Quantity	Product name	Info
06	SP01156		1 piece	Retaining Ring	
07	Only available in K01		1 piece	Ball Bearing	
08	Not available		1 piece	Cover	
09	SP00314		4 pieces	Tapping Screw	
10	Only available in K02		1 piece	Seal O-Ring	
11	Only available in K02		1 piece	Radial Seal Ring	
12	Only available in K02		1 piece	Seal Ring	
13	SP02134		1 piece	Sprocket ASM	Information for MFA RDM: Used in A2463502402
13	SP02135		1 piece	Sprocket ASM	Information for MFA RDM: Used in A1763503100
14	SP01994		1 piece	Retaining Ring	
15	Not available		1 piece	Shim	
16	Not available		1 piece	Cover	
17	Not available		1 piece	Deflector	
18	Not available		1 piece	Shim	
19	Only available in K01		1 piece	Tapered Roller Bearing	
20	SP02177		1 piece	Gear Pinion	
21	Not available		1 piece	Deflector Housing	
22	Not available		1 piece	Housing	
23	SP01483	6000626088; A2469970046	2 pieces	Radial Seal Ring	
24	SP02173		1 piece	Filter ASM	
25	SP00373	A0029907717	1 piece	Screw Plug	
26	SP00155		3 pieces	Pin	
27	SP01315	05143630AA; A2102760098	1 piece	Magnet	
28	Not available		2 pieces	Shim	
29	Only available in K01		3 pieces	Tapered Roller Bearing	
30	SP02180		1 piece	Differential Housing ASM	
31	SP00637		1 piece	Plug	Information for HAA350+ Audi: Used in 0AV525010D, 0AV525010E, 0AV525010F, 0AV525010H, 0AV525010K, 0AV525010L, 0AV525010M, 0BR525010, 0BR525010A, 0BR525010B, 0BR525010C, 0BR525010G, 0BR525010H  Information for HAA350+ SEAT: Used in 0AV525010D, 0AV525010E, 0AV525010H, 0AV525010K, 0AV525010L, 0BR525010, 0BR525010B, 0BR525010G  Information for HAA350+ Skoda: Used in 0AV525010D, 0AV525010H, 0AV525010K, 0BR525010, 0BR525010B, 0BR525010E, 0BR525010G, 0BR525010J  Information for HAA350+ VW: Used in 0AV525010D, 0AV525010E, 0AV525010H, 0AV525010K, 0AV525010L, 0BR525010, 0BR525010B, 0BR525010G
32	SP01482		1 piece	Vent	
33	SP00556	017525093; 95834139300	1 piece	Vent Cap	
34	SP02179		2 pieces	Gear Differential Spider	
35	SP02178		2 pieces	Gear Differential Side	

# Rear Axle Drive MFA RDM

RD00097, RD00098

OEM No: A1763503100; A2463502402

## List of parts

Pos	Part number	OEM no	Quantity	Product name	Info
36	SP01485		1 piece	Bolt	
37	SP01488		1 piece	Pin	
38	SP01486		1 piece	Thrust Washer Compound	
39	SP01479	A2462770635	1 piece	Valve	
40	SP01480		2 pieces	Screw	
41	SP01489	A2463530900	1 piece	Bracket	
42	Not available		2 pieces	Plug	
43	SP00220		10 pieces	Tapping Screw	
44	SP01490		1 piece	Cap	Information for MFA RDM: Used in A1763501900, A1763502800, A1763502900, A2463506900, A2463501802
45	Not available		1 piece	Plug	Information for MFA RDM: Used in A1763502900
45	SP02355		1 piece	Valve	Information for MFA RDM: Used in A2463506900, A2463501802
45	SP02460		1 piece	Valve	Information for MFA RDM: Used in A1763501900, A1763502800
46	SP01487		2 pieces	Cap	