



FEB
2024

FEBRUARY

PRESIDENTS LETTER

The weather during these cold months makes me want to create. There is something very satisfying about making a cup of tea and working on a project that allows you to forget about the below-freezing temperatures. It is a great time of year to experiment with new supplies or learn new skills.

One way to improve your creativity is to “Steal Like an Artist”. This is also a book by Austin Kleon. He demonstrates how very few ideas are completely unique or original. Austin’s book discusses the differences between good and bad theft. Good theft incorporates honor, studying, stealing from many, giving credit, transforming/remix. Bad theft includes degrading, skimming, stealing from one, plagiarizing, and imitating.

If you copy from one person, that is plagiarism. If you copy from many, then it is research. Every new idea is a mashup of one or more previous ideas. You are the sum of your influences, so use ideas from artists who inspire you. Figure out what makes them successful rather than just copy them. Study them to see what makes them unique and then add your own originality. Great people leave their legacy through their work – but you must understand their work and what makes it successful. You also need to think about what ideas you intentionally ignore. What you ignore is sometimes more important than what you include.

Draw the art you want to see, do the work that you want to see done. Don’t start editing before you give ideas a chance. The stuff you thought was just messing around is where creativity comes from. So don’t feel guilty about “Stealing from an Artist”, just be aware of how to do this with integrity. Combine multiple ideas from different artists and then add your own touch. You may be surprised at the results!

Stay warm and see you at the February meeting!

Cathy

BSWG member Jan Youd passed away at home on Sunday, January 14.

She was an incredible fiber artist, weaver and book maker. Some of her latest works included colorful botanical prints, greeting cards and handmade books.

She was an inspiration to us all! She will be missed.



FEBRUARY 2024 PROGRAM

Oscar Beriau and the Québécois Weaving Renaissance 1930 - 1950



Mary Underwood began handspinning in 1993. Weaving followed shortly thereafter. In 2001 she added Mongolian and Québécois textile research to her slate, with an emphasis on the weaving programs of Oscar Beriau. She is a recently retired speech pathologist who now engages in yarn and handweaving production, teaching, and research.

Oscar Beriau and the Québécois Weaving Renaissance 1930 - 1950

Oscar Beriau, through the Québec Department of Agriculture, would start a school for the domestic arts in 1930. That program launched the worldwide business of a Québec loom manufacturer and established Québec as a national leader in weaving instruction programs. The books from his school became popular throughout Canada and the United States for several decades. He would be asked to recreate the program in Canada's prairie provinces.

Who were the people behind the success of this school? Why was the weaving program so successful? These questions seeded Mary's treasure hunt for those still living who were part of the school and who could tell the story.



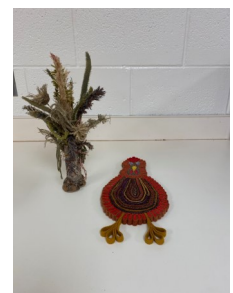
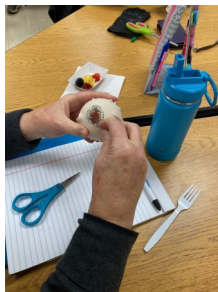
Oscar Beriau in, 1940, on display I the SCC Gallery.



A weaving course I Legal Alberta on display I the SCC Gallery.



BLACK SHEEP WEAVERS FIBER GUILD JANUARY 2024 MEETING



The weather outside is frightful, but my stitching is so delightful, so since there's no place to go...
One more row.
One more row.
One more row.



MICHIGAN LEAGUE *of* HANDWEAVERS

22ND BIENNIAL
FIBER ARTS EXHIBITION

SEPT | OCT
07 | 16
2024

ANTON ART CENTER, MT. CLEMENS MI

- Cash prizes for winning pieces
- Art Market for sellable goods

AND MORE!!

WWW.MLHGUILD.ORG

interested in having your art displayed? applications go live Oct. 2023

- MLH members are invited to submit up to three original entries completed within the last two years in the Fiber Art and/or Functional Fiber Art categories. No size restrictions. Remember that you need to be an Individual MLH Guild member, Black Sheep has a Guild Member status.

Take high resolution photos of the artwork (exactly as you would like it to appear at the exhibit) Two photos per piece: one image of the entire piece and one detail image. **Image Title Format; Last-name_title_dimension_photo#.jpg** JPG image files must not exceed 1.5MG. Attach these files to the electronic entry form or email them to eastsidehandweavers@gmail.com by July 1, 2024.

- **Entry fee** is \$25.00 per artist for up to 3 artwork entries. Submit entry fee by July 1, 2024 via PayPal on the electronic entry form or by check payable to Michigan League of Handweavers mailed to: 21617 Briarcliff, Saint Clair Shores, MI 48082. A \$25 service charge is applied to any returned check. Entry fee is non-refundable.
- **Jurying** will take place July 2-29, 2024, and artists will be notified of acceptance/declination by July 30, 2024.
- **Artwork Delivery**
 - Accepted artworks and artist material must be delivered to the Anton Art Center on Wednesday, August 28, 2024 between 11-1pm, or mailed to arrive between August 21-28. Artists are responsible for transportation and/or shipping arrangements and costs to and from the Anton Art Center. With the exception of shipped artwork only, the Anton Art Center is unable to store and packaging materials. Please provide installation instructions and display materials/ hardware (with the exception of nails or tacks which will be provided). Artwork must be ready to be safely and securely installed upon arrival. Anton Art Center reserves the right to remove work that does not comply with standard installation requirements and safety guidelines.

- **Awards**

First, Second and Third cash prizes will be awarded in both Fiber Art and Functional Fiber Art Categories. Monies will be announced in January 2024 on the MLH website (www.mlhguilds.org). Best of show and Honorable Mention ribbons, as well as Handweavers Guild of America and Complex Weaver ribbons will be awarded.

- **Sales**

Artists may choose whether their entries are for sale or provide insurance value for artwork not for sale(NFS). If selling, the price submitted is the final retail price. The Anton Art Center retains 40% of the retail price on all works sold (the artist gets 60%); please price artwork accordingly.

- **IMPORTANT DATES**

- **Deadline for Submissions** July 1, 2024 (Required .jpg images, entry form and entry fee)
- **Juried results** Sent via email no later than July 30, 2024
- **Delivery of Artwork** Wednesday, August 28, 2024 11am-1pm
- **Mailed artwork may arrive between August 21-28, 2024**
- **Reception & Awards** Saturday, September 7, 2024 2-4pm including Juror and Artist Talk
- **Show Closes** Wednesday, October 16, 2024
- **Artwork Pick up** Thursday, October 17, 2024 11am-1pm
- **Mailed in artwork with prepaid return labels will be mailed back to the artists following the show.**

- **Contact Information**

Please direct all questions to Marge Sumner at the Eastside Handweavers Guild by email at

eastsidehandweavers@gmail.com or phone (586) 872-4904 (call or text)

- Our contact at the Anton Art Center is Exhibitions Manager, Stephanie Hazzard, 586.469.8666. or sahazzard@theartcenter.org.



BLACK SHEEP WEAVERS DATES AND PROGRAMS

February— Mary Underwood—Canadian Revival Weaving

March—Suzanne Sandvik—Wool Flowers

April—Janice Wright and Jennifer Dehanke—Quilting

May—Trunk Sale

June—Pot Luck

MEETING CANCELATION POLICY

We follow Hartland School closings.

If the HARTLAND Schools are closed there will be no BSW meeting.

If weather worsens during the day, a decision will be made by 4pm and every attempt will be made to post a meeting cancellation on our website.

When in doubt, please contact a Board member or visit: www.hartlandschools.us.

MEETING PLACE

Our meetings are held at Hartland Consolidated Schools Educational Support Service Center (Old Hartland High School), 9525 Highland Rd (M59) Hartland (Howell mailing address), MI. 3/4 miles west of US 23, Room 3. Accessed via the last set of doors near the east end of the building.

Social time starts at 6:15
Program starts at 6:45 followed by Business meeting and Show & Tell

BSWFG 2023-2024 BOARD/VOLUNTEERS

President/Newsletter: Cathy Greenhalgh

Vice President/Programs: Jan Bhavsar & Thia Eades

Vice President/Workshops: Debbie Nachtegal

Treasurer/Membership: Bonnie Janssen

Secretary: Jacqueline Deradoorian

Newsletter: Linda MacDonald

Website/Printing: Linda Lundstrom

Librarian: Nadine Cloutier & Annette Shaffer

Hospitality: Noreen Miller

MLH Rep: Nadine Cloutier

Guild Sales Tags: Darlene Gould-Murray