

Our Mission:

Comprehend's mission is to enhance the well-being of individuals, families, and communities by advocating for and providing behavioral healthcare services in a welcoming and caring environment.

Our Values:

Integrity: We will be truthful, honest and open with everyone in word and deed.

Excellence: We will make a continual effort to achieve the highest degree of professional standards possible in all areas.

Stewardship: We will be responsible for the management of our resources to provide and sustain our ability to serve.

We will take full ownership for our failures and our successes, being ever mindful that we are accountable to our past, present and future employees, clients, and the community at large.

Respect: We will be ever mindful – in all we do and say – in order to treat everyone with dignity, courtesy and consideration.

Kindness: We will show all individuals we interact with, internally and externally, the same consideration and care we expect.

Dedication: We will show unconditional commitment to serve each other so that together we can serve and meet the needs of our community.

Comprehend is
a Licensed Mental Health
Center Serving
the Buffalo Trace Region

Please feel free to call any of our area offices listed below for further information about our services

Mason County

611 Forest Avenue
Maysville, KY
606-564-4016

Bracken County

134 Grandview Drive
Brooksville, KY 41004
T: 606-735-3611

Fleming County

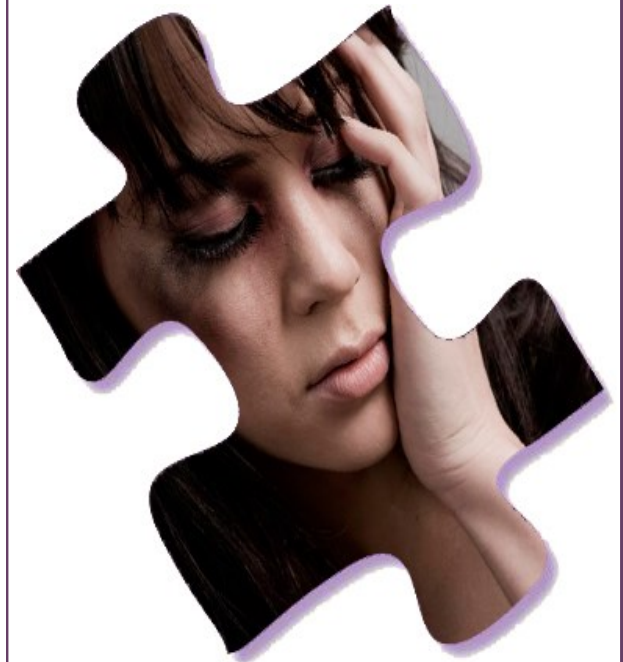
610 Elizaville Avenue
Flemingsburg, KY 41041
T: 606-849-2212

Lewis County

83 Second Street
Vanceburg, KY 41179
T: 606-796-3021



Batterer Intervention Program



Helping You Put the Pieces Together

History of the Batterer Intervention Program

For more than ten years, therapists at Comprehend, Inc. have been conducting weekly intensive group therapy sessions, for person who have been designated as perpetrators of domestic violence. The sessions have been conducted at Comprehend's Maysville office on weekday evenings. The immediate goal of these groups sessions is to eliminate the use of physical, verbal and mental abuse in intimate relationships.

Admittance into the Program

Persons are admitted into the program via two routes: mandated court-referral and self-referral.

After the appropriate referral, the participants are involved in a three-element screening process. This process consists of:

- 1) An initial, face-to-face interview regarding the individual's history and use of violence
- 2) A psychological personality assessment
- 3) A full psychosocial history

For the screening process to be completed,

the individual must sign a release of information to the referring court.

The cost for these services is based upon your type of insurance. Comprehend does offer a fee reduction with proof of income, which is based on household income. For more information please call our office at 606-564-4016 or ask one of our clerical support staff members.

Therapists and Facilitators

Damon Turner, MA, a therapist with Comprehend, provides general oversight to the total Batter Intervention Program (BIP) and also serves as a facilitator of the group therapy sessions.



Group Therapy Sessions

Upon completion of the screening process, Comprehend will notify the court with a start date for the individual who is being admitted to group.

The group meets for one and a half to two hours, one time a week (day and time of group sessions to be determined by the group members' needs). The current charge for group sessions is \$10 per session.

Individual sessions can be scheduled for individuals who have a work excuse, but the rate of service for individual sessions will apply.

If for some reason the individual is not being admitted to the group the court will be notified with an explanation.

If the individual is discharged from the group (non-compliance with attendance, recurrence of violence, etc.), Comprehend will notify the court with the explanation, and recommendations and requirements for readmission.

When the individual has completed the 30-week program, an individual exit session is scheduled. Once any outstanding balance has been paid in full, Comprehend will notify the court of the individual's completions.