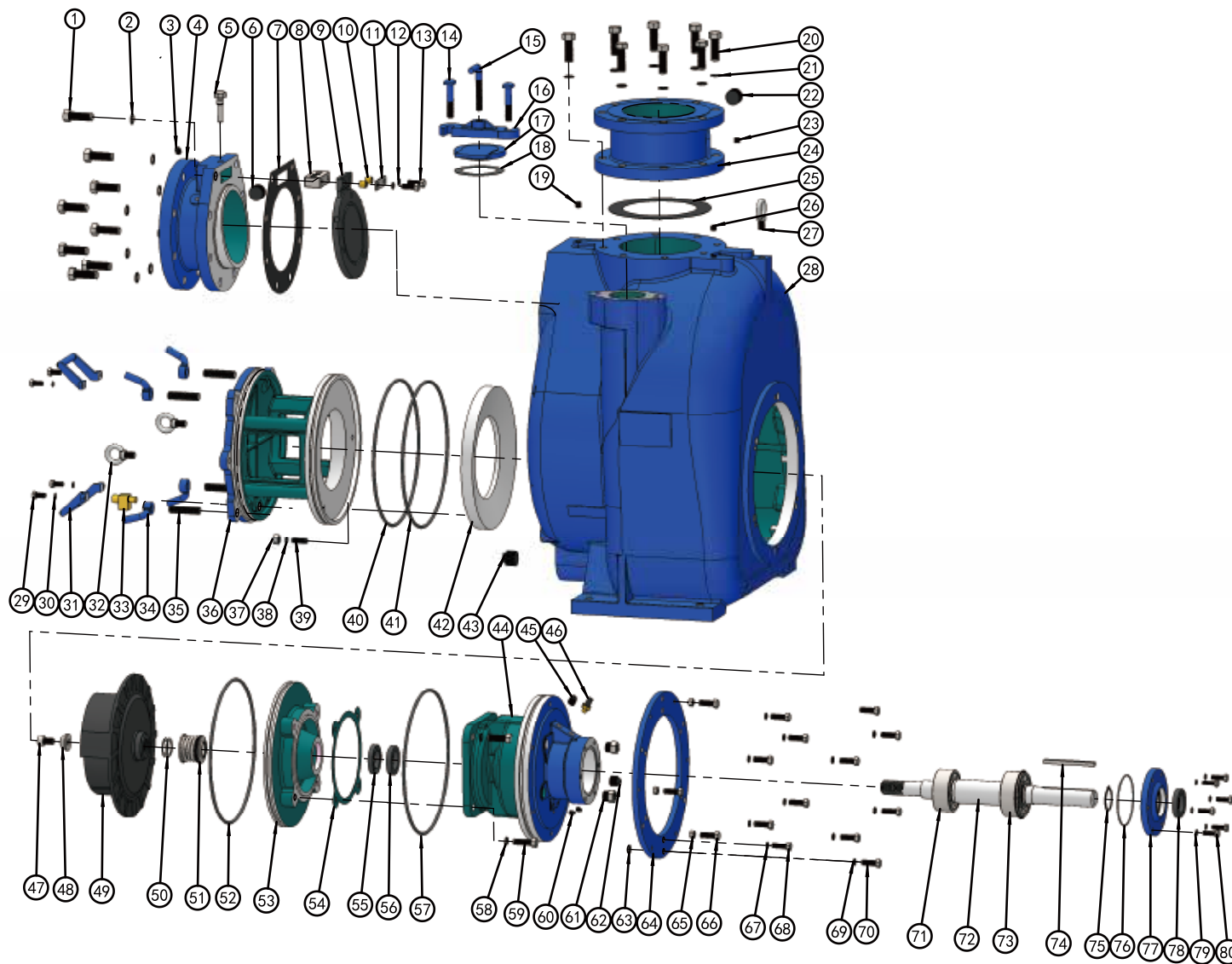


▲ MCST-8
90° SECTIONAL VIEW



PARTS LIST PUMP MODEL MCST 8"

ITEM NO.	PART NAME	PART NUMBER	MAT'L	QTY.	ITEM NO.	PART NAME	PART NUMBER	MAT'L	QTY.
1	HEX HD CAPSCREW	101001340002	Q235	8	23	PIPE PLUG	105501000014	Q235	1
2	LOCK WASHER	111010100034	Q235	8	24	DISCH FLG	348200000008A	HT250	1
3	PIPE PLUG	105501000014	Q235	1	25 *	GSKT, DISCH FLG	118200610270	NBR	1
4	SUCTION FLG	347200000008A	HT250	1	26	PIPE PLUG	105501000014	Q235	1
5 *	CHECK VALVE PIN	101410042038	304SS	1	27	LIFT BOLT	104500000020	Q235	1
6	PIPE PLUG	105101000114	Q235	1	28	PUMP CASING	301201000008A	HT250	1
7 *	GSKT, SUCTION FLG	118200510270	NBR	1	29	HEX HD CAPSCREW	101001380001	Q235	4
8 *	PIVOT CAP	344200000008D	304SS	1	30	LOCK WASHER	111010100038	Q235	4
9 *	CHECK VALVE	118201210273	NBR	1	31	CVR PLATE HANDLE	313210003468C	WCB	2
10 *	BRONZE PIPE	188200200017N	BRONZE	2	32	LIFTING BOLT	104500000021	Q235	2
11 *	GSKT, PIVOT CAP	118201400080	304SS	1	33 *	PRESS RELIEF VALVE	188200300012N	BRASS	1
12 *	LOCK WASHER	111011000012	304SS	2	34	HAND NUT	312200000034C	WCB	4
13 *	HEX HD CAPSCREW	101010012035	304SS	2	35	STUD	102101340314	Q235	4
14	MACHINE BOLT	101380058003	Q235	2	36	BACK COVER PLATE	339201000008A	HT250	1
15	CLAMP BAR SCREW	188200100000C	WCB	1	37	HAND NUT	103011000012	304SS	3
16	CLAMP BAR	345200300000B	QT450	1	38	LOCK WASHER	111011100012	304SS	3
17	FILL COVER PLATE	345200200000B	QT450	1	39	STUD	102011120112	304SS	3
18 *	GSKT, FILL COVER	118201110127	NBR	1	40 *	O-RING	131000375700	NBR	1
19	PIPE PLUG	105501000014	Q235	1	41 *	O-RING	131000375700	NBR	1
20	HEX HD CAPSCREW	101001340002	Q235	8	42 *	WEAR PLATE ASSY	338200000008B	QT450	1
21	LOCK WASHER	111010100034	Q235	8	43	PIPE PLUG	105101000114	Q235	1
22	PIPE PLUG	105101000114	Q235	1					

PARTS LIST *ROTATING ASSEMBLY

ITEM NO.	PART NAME	PART NUMBER	MAT'L	QTY.	ITEM NO.	PART NAME	PART NUMBER	MAT'L	QTY.
44	BRG HOUSING	304201000008A	HT250	1	63	FLAT WASHER	111000251316	Q235	12
45	PIPE PLUG	105101000013	Q235	1	64	BRG FRAME PLATE	3452006108100	Q235	1
46	AIR VENT PLUG	199000000052	BRASS	1	65	HEX NUT	103001000012	Q235	3
47 *	SOCKET HD CAPSCREW	101111580001	304SS	1	66	HEX HD CAPSCREW	101001120112	Q235	3
48 *	IMPELLER NUT	111203000061	304SS	1	67	LOCK WASHER	111010100012	Q235	6
49 *	IMPELLER	302202000008B	QT450	1	68	HEX HD CAPSCREW	101001120112	Q235	6
50 *	IMPELLER ADJ SHIM SET	188200400505D	304SS	7	69	LOCK WASHER	111010100012	Q235	6
51 *	MECHANICAL SEAL	107420118751	S-S-FKM-316-630	1	70	HEX HD CAPSCREW	101001120112	Q235	6
52 *	O-RING	131000360700	NBR	1	71 *	INBOARD BALL BRG	106020053100	NA	1
53	SEAL PLATE	303202000008A	HT250	1	72 *	IMPELLER SHAFT	305201000008Q	4140	1
54 *	GSKT, SEAL PLATE	118200100312	ARAMID FIBERS	1	73 *	OUTBOARD BALL BRG	106020053110	NA	1
55 *	OIL SEAL	109020076120	NBR	1	74 *	SHAFT KEY	110011038512	304SS	1
56 *	OIL SEAL	109020076120	NBR	1	75	RETAINING RING	112040000055	65Mn	1
57 *	O-RING	131000360700	NBR	1	76 *	O-RING	131000130355	NBR	1
58	LOCK WASHER	111011100058	304SS	4	77	BRG COVER, INBOARD	341200008106A	HT250	1
59	HEX HD CAPSCREW	101011508134	304SS	4	78 *	OIL SEAL	109020076120	NBR	1
60	PIPE PLUG	105501000014	Q235	2	79	LOCK WASHER	111010100038	Q235	6
61	SIGHT GAUGE	114200000003	304SS	2	80	HEX HD CAPSCREW	101001380114	Q235	6
62	PIPE PLUG	105101100034	Q235	1					

*INDICATES PARTS RECOMMENDED FOR STOCK.

IF YOUR PUMP IS NOT A STANDARD PRODUCTION MODEL, CONTACT THE M&C PUMPS CO.,LTD TO VERIFY PART NUMBERS.