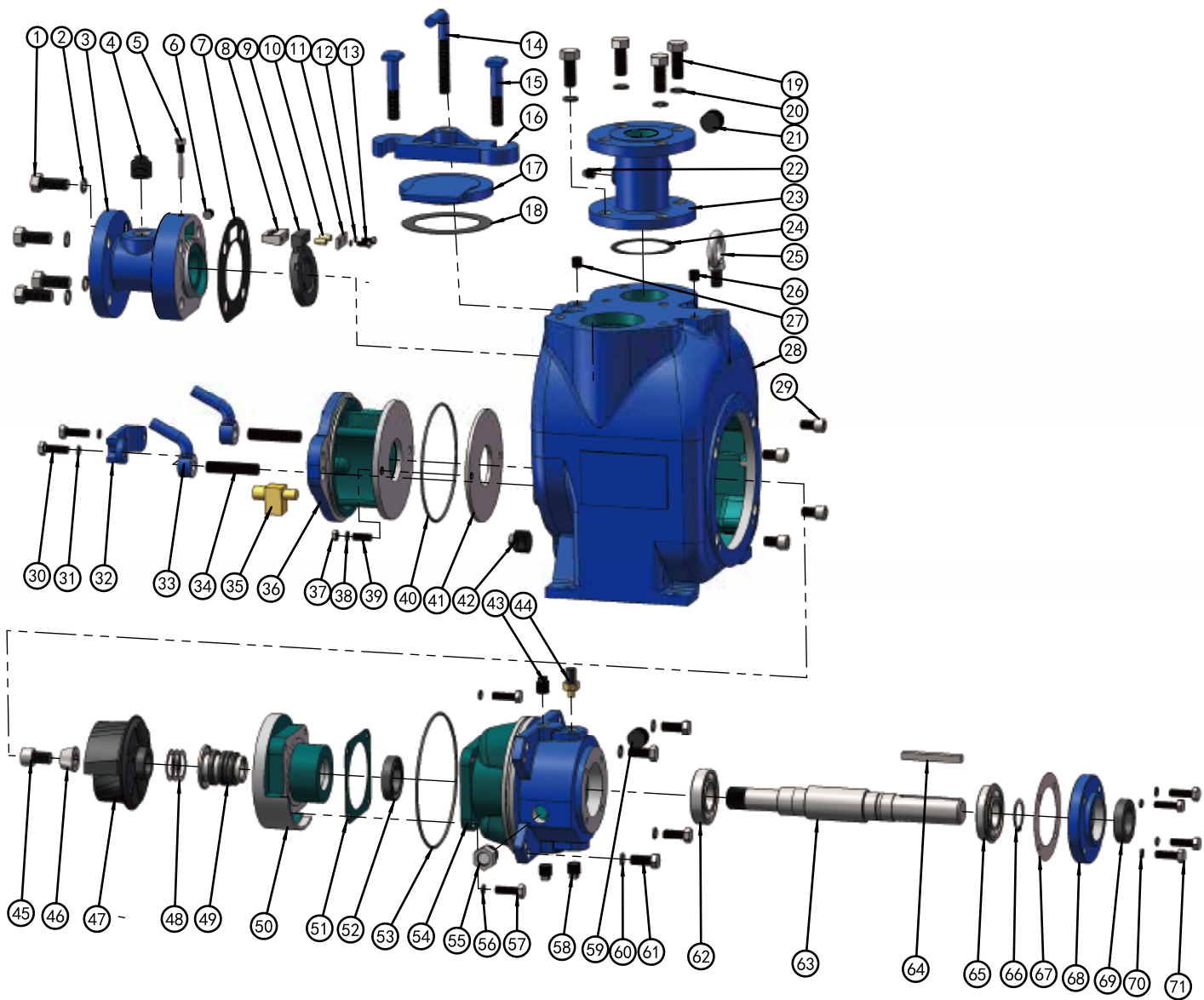


▲ MCT-2
90° SECTIONAL VIEW



PARTS LIST PUMP MODEL MCT 2"

ITEM NO.	PART NAME	PART NUMBER	MAT'L	QTY.	ITEM NO.	PART NAME	PART NUMBER	MAT'L	QTY.
1	HEX HD CAPSCREW	101001508214	Q235	4	22	PIPE PLUG	105401000014	Q235	1
2	LOCK WASHER	111010100058	Q235	4	23	DISCH FLANGE	348200000002A	HT250	1
3	SUCTION FLANGE	347200000002A	HT250	1	24	* GSKT, DISCH FLANGE	118200610092	NBR	1
4	PIPE PLUG	105101000001	Q235	1	25	LIFTING BOLT	104500000016	Q235	1
5	* CHECK VALVE PIN	101200000002	304SS	1	26	PIPE PLUG	105501000014	Q235	1
6	PIPE PLUG	105401000014	Q235	1	27	PIPE PLUG	105501000014	Q235	1
7	* GSKT, SUCTION FLANGE	118200510156	NBR	1	28	PUMP CASING	301200000002A	HT250	1
8	PIVOT CAP	344200000002D	304SS	1	29	SOCKET HD CAPSCREW	101111121100	304SS	4
9	* CHECK VALVE	118201210107	NBR	1	30	HEX HD CAPSCREW	101001380001	Q235	2
10	* BRONZE PIPE	188200200006N	BRONZE	2	31	LOCK WASHER	111010100038	Q235	2
11	* WASHER, PIVOT CAP	118201400039	304SS	1	32	CVR PLATE HANDLE	313200000002A	HT250	1
12	* LOCK WASHER	111011000006	304SS	2	33	HAND NUT	312200000058C	WCB	2
13	* HEX HD CAPSCREW	101010006025	304SS	2	34	STUD	102001508300	Q235	2
14	CLAMP BAR SCREW	188200100000C	WCB	1	35	* PRESS RELIEF VALVE	188200300012N	BRASS	1
15	MACHINE BOLT	101380058003	Q235	2	36	COVER PLATE	339200000002A	HT250	1
16	CLAMP BAR	345200300000B	QT450	1	37	HEX NUT	103011000038	304SS	2
17	FILL COVER PLATE	345200200000B	QT450	1	38	LOCK WASHER	111011100038	304SS	2
18	* GSKT, FILL CVR PLATE	118201110127	NBR	1	39	STUD	102201380114	304SS	2
19	HEX HD CAPSCREW	101001508134	Q235	4	40	* O-RING	131000165355	NBR	1
20	LOCK WASHER	111010100058	Q235	4	41	* WEAR PLATE ASSY	338200000002O	Q235	1
21	PIPE PLUG	105101000001	Q235	1	42	PIPE PLUG	105101100034	Q235	1

PARTS LIST *ROTATING ASSEMBLY

ITEM NO.	PART NAME	PART NUMBER	MAT'L	QTY.	ITEM NO.	PART NAME	PART NUMBER	MAT'L	QTY.
43	PIPE PLUG	105101000013	Q235	1	58	PIPE PLUG	105101000012	Q235	2
44	AIR VENT PLUG	199000000052	BRASS	1	59	PIPE PLUG	105101100034	Q235	1
45	* SOCKET HD CAPSCREW	101111580001	304SS	1	60	LOCK WASHER	111010100012	Q235	4
46	* IMPELLER WASHER	111203000059	304SS	1	61	HEX HD CAPSCREW	101001120112	Q235	4
47	* IMPELLER	302200000002B	QT450-10	1	62	* INBOARD BALL BRG	106020062080	NA	1
48	* IMPELLER ADJ SHIM SET	188200400445D	304SS	7	63	* SHAFT	305200000002Q	4140	1
49	* MECHANICAL SEAL	107420115001	S-S-FKM-316-630	1	64	* SHAFT KEY	110011038312	304SS	1
50	SEAL PLATE	303200000002A	HT250	1	65	* OUTBOARD BALL BRG	106021062087	NA	1
51	* GSKT, SEAL PLATE	118200100120	ARAMID FIBERS	1	66	RETAINING RING	112040000040	65Mn	1
52	* OIL SEAL	109010040013	NBR	1	*	* GSKT, BRG COVER	118201000092	ARAMID FIBERS	1
53	* O-RING	131000190355	NBR	1	68	BRG COVER, INBOARD	341200000023A	HT250	1
54	BRG HOUSING	304200000002A	HT250	1	69	* OIL SEAL	109010040013	NBR	1
55	SIGHT GAUGE	114200000003	304SS	1	70	LOCK WASHER	111010100038	Q235	4
56	LOCK WASHER	111011100038	304SS	4	71	HEX HD CAPSCREW	101001380114	Q235	4
57	HEX HD CAPSCREW	101011380114	304SS	4					

*INDICATES PARTS RECOMMENDED FOR STOCK.

IF YOUR PUMP IS NOT A STANDARD PRODUCTION MODEL, CONTACT THE M&C PUMPS CO.,LTD TO VERIFY PART NUMBERS.