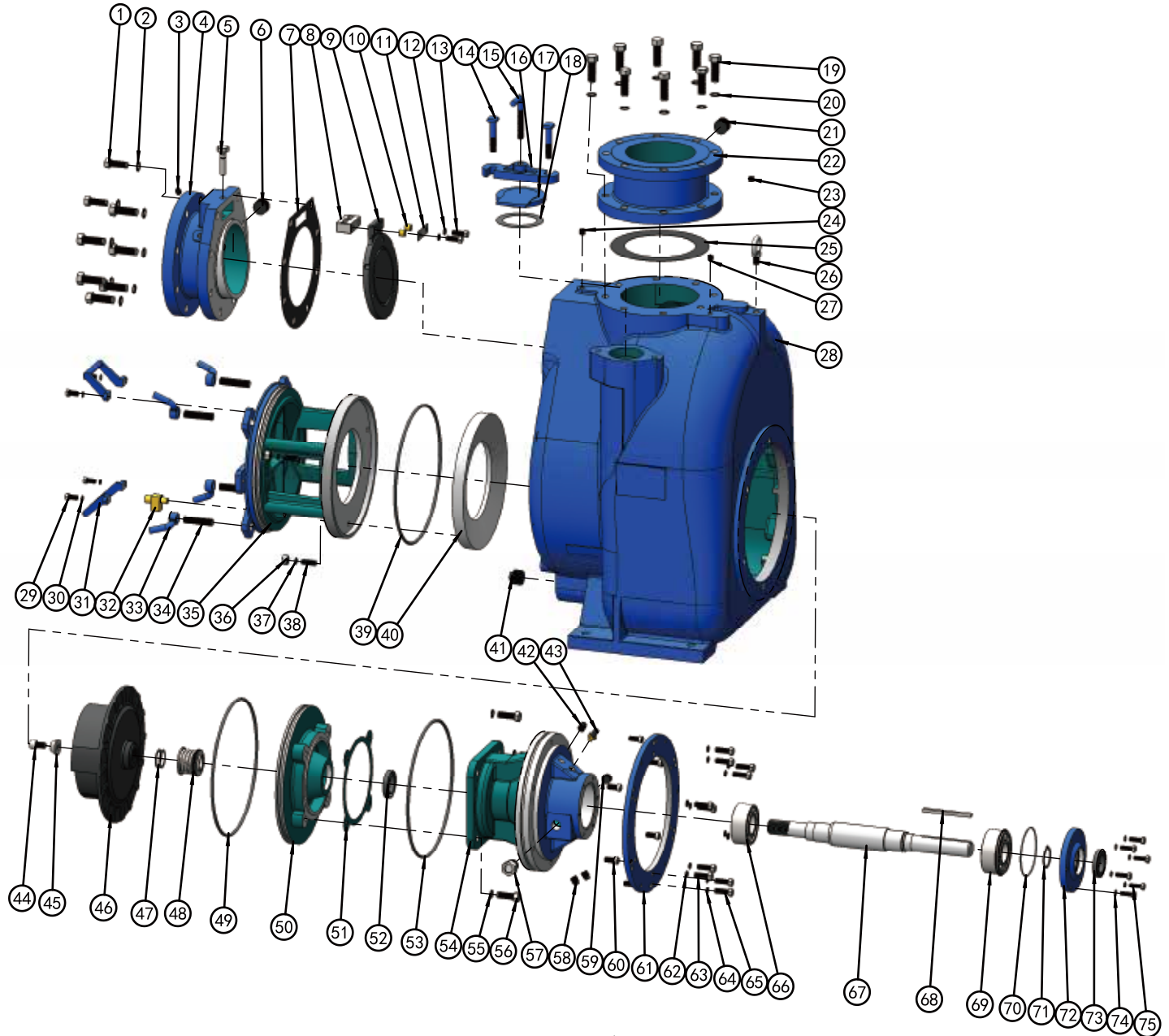


▲ MCT-8  
90° SECTIONAL VIEW



## PARTS LIST PUMP MODEL MCT 8"

ITEM NO.	PART NAME	PART NUMBER	MAT'L	QTY.	ITEM NO.	PART NAME	PART NUMBER	MAT'L	QTY.
1	HEXHD CAPSCREW	101001340002	Q235	8	22	DISCH FLANGE	348200000008A	HT250	1
2	LOCKWASHER	111010100034	Q235	8	23	PIPE PLUG	105501000014	Q235	1
3	PIPE PLUG	105501000014	Q235	1	24	PIPE PLUG	105501000014	Q235	1
4	SUCTION FLANGE	347200000008A	HT250	1	25	* GSKT, DISCH FLANGE	118200610270	NBR	1
5	* CHECK VALVE PIN	101410042038	304SS	1	26	LIFTING BOLT	104500000020	Q235	1
6	PIPE PLUG	105101000114	Q236	1	27	PIPE PLUG	105501000014	Q235	1
7	* GSKT, SUCTION FLANGE	118200510270	NBR	1	28	PUMP CASING	301200000008A	HT250	1
8	* PIVOT CAP	344200000008D	304SS	1	29	HEXHD CAPSCREW	101001380001	Q235	4
9	* CHECK VALVE	118201210273	NBR	1	30	LOCKWASHER	111010100038	Q235	4
10	* BRONZE PIPE	188200200017N	BRONZE	2	31	CVR PLATE HANDLE	313210003468C	WCB	2
11	* WASHER, PIVOT CAP	118201400080	304SS	1	32	* PRESS RELIEF VALVE	188200300012N	BRASS	1
12	LOCKWASHER	111011000012	304SS	2	33	HAND NUT	312200000034C	WCB	4
13	HEXHD CAPSCREW	101010012035	304SS	2	34	STUD	102101340314	Q235	4
14	MACHINE BOLT	101380058003	Q235	2	35	COVER PLATE	339200000008A	HT250	1
15	CLAMP BAR SCREW	188200100000C	WCB	1	36	HEX NUT	103011000012	304SS	3
16	CLAMP BAR	345200300000B	QT450-10	1	37	LOCKWASHER	111011100012	304SS	3
17	FILL COVER PLATE	345200200000B	QT450-10	1	38	STUD	102011120112	304SS	3
18	* GSKT, FILL COVER PLATE	118201110127	NBR	1	39	* O-RING	131000375700	NBR	1
19	HEXHD CAPSCREW	101001340002	Q235	8	40	* WEAR PLATE ASSY	338200000008B	QT450-10	1
20	LOCKWASHER	111010100034	Q235	8	41	PIPE PLUG	105101000114	Q235	1
21	PIPE PLUG	105101000114	Q235	1					

## PARTS LIST \*ROTATING ASSEMBLY

ITEM NO.	PART NAME	PART NUMBER	MAT'L	QTY.	ITEM NO.	PART NAME	PART NUMBER	MAT'L	QTY.
42	PIPE PLUG	105101000013	Q235	1	59	PIPE PLUG	105101100034	Q235	1
43	AIR VENT PLUG	199000000052	BRASS	1	60	SOCKET HD CAPSCREW	101111121100	304SS	6
44	* SOCKET HD CAPSCREW	101111580001	304SS	1	61	ASSEMBLY PLATE	3452006008100	Q235	1
45	* IMPELLER WAHER	111203000061	304SS	1	62	LOCKWASHER	111010100012	Q235	6
46	* IMPELLER	302202000008B	QT450-10	1	63	HEX HD CAPSCREW	101001120112	Q235	6
47	* IMPELLER ADJ SHIM SET	188200400505D	304SS	7	64	LOCKWASHER	111010100012	Q235	6
48	* MECHANICAL SEAL	107420118751	S-S-FKM-316-630	1	65	HEX HD CAPSCREW	101001120158	Q235	6
49	* O-RING	131000360700	NBR	1	66	* INBOARD BALL BEARING	106020053100	NA	1
50	SEAL PLATE	303202000008A	HT250	1	67	* SHAFT	305200000008Q	4140	1
51	* GSKT, SEAL PLATE	118200100312	ARAMID FIBERS	1	68	* SHAFT KEY	110011038512	304SS	1
52	* OIL SEAL	109020076120	NBR	1	69	* OUTBOARD BALL BEARING	106020053110	NA	1
53	* O-RING	131000360700	NBR	1	70	* O-RING	131000130355	NBR	1
54	BRG HOUSING	304200000008A	HT250	1	71	RETAINING RING	112040000055	65Mn	1
55	LOCKWASHER	111011100058	304SS	4	72	BRG COVER, INBOARD	341200008106A	HT250	1
56	HEX HD CAPSCREW	101011508134	304SS	4	73	* OIL SEAL	109020076120	NBR	1
57	SIGHT GAUGE	114200000003	304SS	1	74	LOCKWASHER	111010100038	Q235	6
58	PIPE PLUG	105101000012	Q235	2	75	HEX HD CAPSCREW	101001380114	Q235	6

\*INDICATES PARTS RECOMMENDED FOR STOCK.

IF YOUR PUMP IS NOT A STANDARD PRODUCTION MODEL. CONTACT THE M&C PUMPS CO.,LTD TO VERIFY PART NUMBERS.