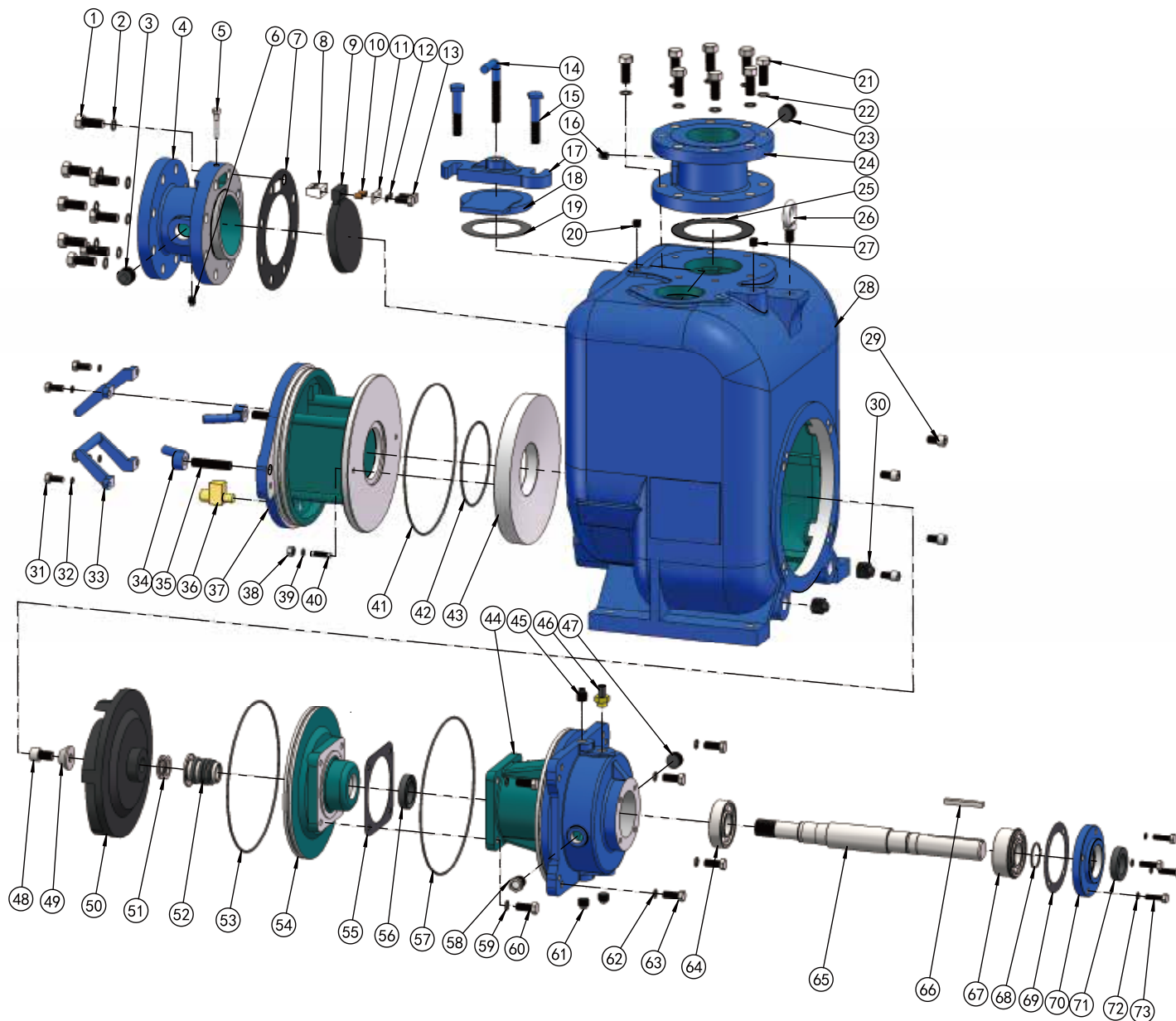


▲ MCU-3
90° SECTIONAL VIEW



PARTS LIST PUMP MODEL MCU 3"

ITEM NO.	PART NAME	PART NUMBER	MAT'L	QTY.	ITEM NO.	PART NAME	PART NUMBER	MAT'L	QTY.
1	HEX HD CAPSCREW	101001508134	Q235	4	23	PIPE PLUG	105101000001	Q235	1
2	LOCK WASHER	111010100058	Q235	4	24	DISCH FLANGE	348210000003A	HT250	1
3	PIPE PLUG	105101000001	Q235	1	25	* GSKT, DISCH FLANGE	118201110127	NBR	1
4	SUCTION FLANGE	347210100003A	HT250	1	26	LIFTING BOLT	104500000016	Q235	1
5	* CHECK VALVE PIN	101410042018	304SS	1	27	PIPE PLUG	105501000014	Q235	1
6	PIPE PLUG	105401000014	Q235	1	28	PUMP CASING	301210000003A	HT250	1
7	* GSKT, SUCTION FLANGE	118200510188	NBR	1	29	SOCKET HD CAPSCREW	101111121100	304SS	4
8	* PIVOT CAP	344200000003D	304SS	1	30	PIPE PLUG	105101100034	Q235	2
9	* CHECK VALVE	118201210132	NBR	1	31	HEX HD CAPSCREW	101001380001	Q235	4
10	* BRONZE PIPE	188200200006N	BRONZE	2	32	LOCK WASHER	111010100038	Q235	4
11	* WASHER, PIVOT CAP	118201400044	304SS	1	33	CVR PLATE HANDLE	313210003468C	WCB	2
12	LOCK WASHER	111011000006	304SS	2	34	HAND NUT	312200000058C	WCB	2
13	HEX HD CAPSCREW	101010006025	304SS	2	35	STUD	102001508300	Q235	2
14	CLAMP BAR SCREW	188200100000C	WCB	1	36	* PRESS RELIEF VALVE	188200300012N	BRASS	1
15	MACHINE BOLT	101380058003	Q235	2	37	BACK COVER PLATE	339210000003A	HT250	1
16	PIPE PLUG	105401000014	Q235	1	38	HEX NUT	103011000038	304SS	2
17	CLAMP BAR	345200300000B	QT450-10	1	39	LOCK WASHER	111011100038	304SS	2
18	FILL COVER PLATE	345200200000B	QT450-10	1	40	STUD	102011380158	304SS	2
19	* GSKT, FILL CVR PLATE	118201110127	NBR	1	41	* O-RING	131000275355	NBR	1
20	PIPE PLUG	105501000014	Q235	1	42	* O-RING	131000275355	NBR	1
21	HEX HD CAPSCREW	101001508134	Q235	8	43	* WEAR PLATE ASSY	338210000003B	QT450-10	1
22	LOCK WASHER	111010100058	Q235	8					

PARTS LIST *ROTATING ASSEMBLY

ITEM NO.	PART NAME	PART NUMBER	MAT'L	QTY.	ITEM NO.	PART NAME	PART NUMBER	MAT'L	QTY.
44	BRG HOUSING	304210000034A	HT250	1	59	LOCK WASHER	111011100012	304SS	4
45	PIPE PLUG	105101000013	Q235	1	60	HEX HD CAPSCREW	101011120114	304SS	4
46	AIR VENT PLUG	199000000052	BRASS	1	61	PIPE PLUG	105101000012	Q235	2
47	PIPE PLUG	105101100034	Q235	1	62	LOCK WASHER	111010100012	Q235	4
48	* SOCKET HD CAPSCREW	101111580001	304SS	1	63	HEX HD CAPSCREW	101001120112	Q235	4
49	* IMPELLER WASHER	111203000061	304SS	1	64	* INBOARD BALL BRG	106020063080	NA	1
50	* IMPELLER	302212000003B	QT450-10	1	65	* SHAFT	305210000003Q	4140	1
51	* IMPELLER ADJ SHIM SET	188200400445D	304SS	7	66	* SHAFT KEY	110011038300	304SS	1
52	* MECHANICAL SEAL	107420115001	S-S-FKM-316-630	1	67	* OUTBOARD BALL BRG	106020053086	NA	1
53	* O-RING	131000275355	NBR	1	68	RETAINING RING	112040000040	65Mn	1
54	SEAL PLATE	303212000003A	HT250	1	69	* GSKT, BRG COVER	118201000136	ARAMID FIBERS	1
55	* GSKT, SEAL PLATE	118200100151	ARAMID FIBERS	1	70	BRG COVER, INBOARD	341200004634A	HT250	1
56	* OIL SEAL	109010040013	NBR	1	71	* OIL SEAL	109010040013	NBR	1
57	* O-RING	131000290355	NBR	1	72	LOCK WASHER	111010100038	Q235	4
58	SIGHT GAUGE	114200000003	304SS	1	73	HEX HD CAPSCREW	101001380114	Q235	4

*INDICATES PARTS RECOMMENDED FOR STOCK.

IF YOUR PUMP IS NOT A STANDARD PRODUCTION MODEL, CONTACT THE M&C PUMPS CO.,LTD TO VERIFY PART NUMBERS.