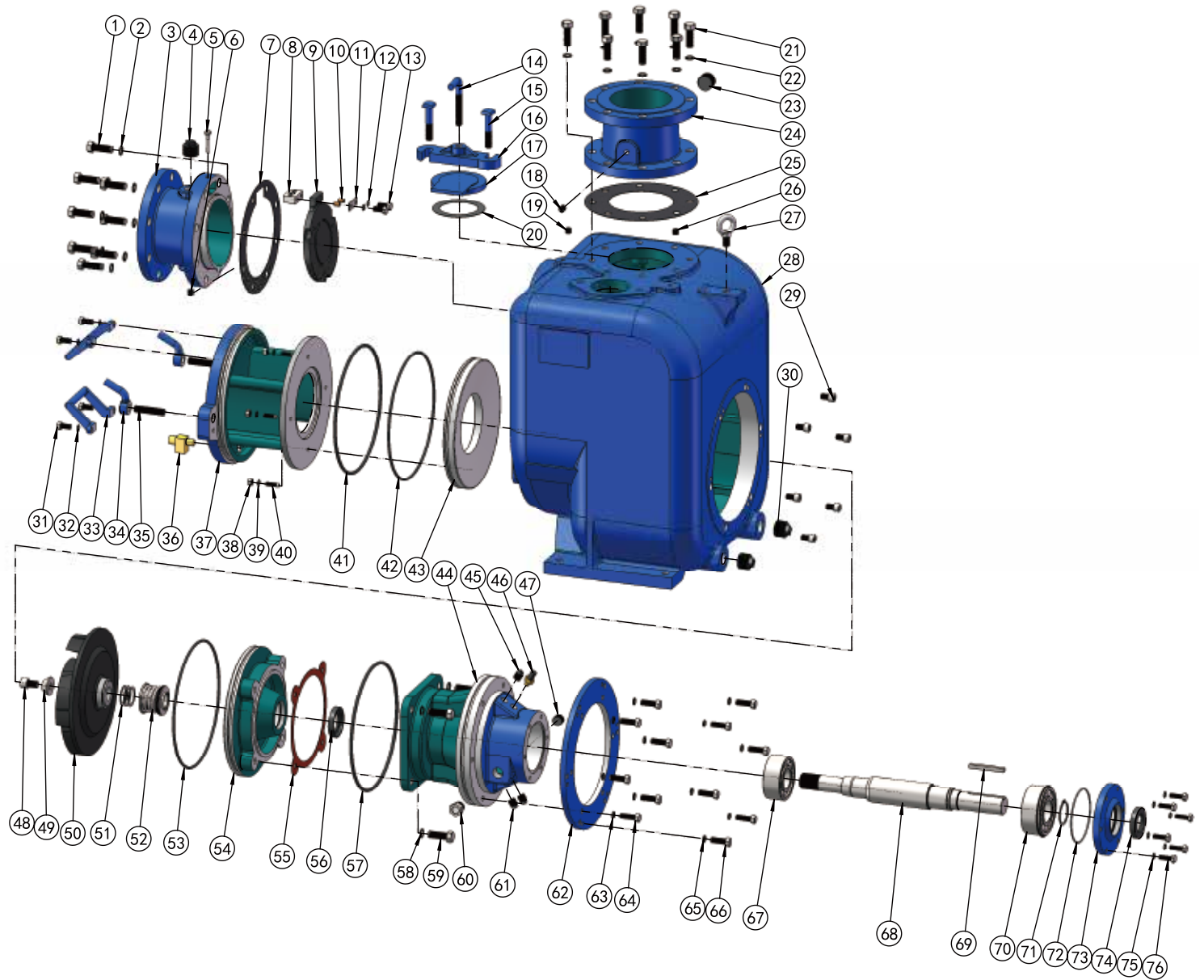


▲ MCU-6  
90° SECTIONAL VIEW



## PARTS LIST PUMP MODEL MCU 6"

ITEM NO.	PART NAME	PART NUMBER	MAT'L	QTY.	ITEM NO.	PART NAME	PART NUMBER	MAT'L	QTY.
1	HEX HD CAPSCREW	101001340002	Q235	8	23	PIPE PLUG	105101000001	Q235	1
2	LOCKWASHER	111010100034	Q235	8	24	DISCHARGE FLG	348200000006A	HT250	1
3	SUCTION FLG	347200000006A	HT250	1	25	* DISCH FLG GSKT	118200610217	NBR	1
4	PIPE PLUG	105101000001	Q235	1	26	PIPE PLUG	105501000014	Q235	1
5	* CHECK VALVE PIN	101410042014	304SS	1	27	LIFTING BOLT	104500000016	Q235	1
6	PIPE PLUG	105401000014	Q235	1	28	PUMP CASING	301210000006A	HT250	1
7	* SUCTION FLG GSKT	118200510275	NBR	1	29	* SOCKET HD CAPSCREW	101111211100	304SS	6
8	* PIVOT CAP	344200000006D	304SS	1	30	PIPE PLUG	105101000114	Q235	2
9	* CHECK VALVE	118201210218	NBR	1	31	HEX HD CAPSCREW	101001380001	Q235	4
10	* BRONZE PIPE	188200200010N	BRONZE	2	32	LOCKWASHER	111010100038	Q235	4
11	* GSKT, PIVOT CAP	118201400050	304SS	1	33	CVR PLATE HANDLE	313210003468C	WCB	2
12	LOCKWASHER	111011000008	304SS	2	34	HAND NUT	312200000034C	WCB	2
13	HEX HD CAPSCREW	101010008030	304SS	2	35	STUD	102101340314	Q235	2
14	CLAMP BAR SCREW	188200100000C	WCB	1	36	* PRESS RELIEF VALVE	188200300012N	BRASS	1
15	MACHINE BOLT	101380058003	Q235	2	37	BACK COVER PLATE	339210000006A	HT250	1
16	CLAMP BAR	345200300000B	QT450	1	38	HAND NUT	103011000038	304SS	4
17	FILL COVER PLATE	345200200000B	QT450	1	39	LOCKWASHER	111011100038	304SS	4
18	PIPE PLUG	105401000014	Q235	1	40	STUD	102011380158	304SS	4
19	PIPE PLUG	105501000014	Q235	1	41	* O-RING	131000340571	NBR	1
20	GSKT, FILL CVR PLATE	118201110127	NBR	1	42	* O-RING	131000340570	NBR	1
21	HEX HD CAPSCREW	101001340002	Q235	8	43	* WEAR PLATE ASSY	338210000006B	QT450	1
22	LOCKWASHER	111010100034	Q235	8					

## PARTS LIST \*ROTATING ASSEMBLY

ITEM NO.	PART NAME	PART NUMBER	MAT'L	QTY.	ITEM NO.	PART NAME	PART NUMBER	MAT'L	QTY.
44	BRG HOUSING	304210000006A	HT250	1	61	PIPE PLUG	105101000012	Q235	2
45	PIPE PLUG	105101000013	Q235	1	62	CASING RING	345210000006O	Q235	1
46	AIR VENT PLUG	199000000052	BRASS	1	63	LOCKWASHER	111010100012	Q235	6
47	PIPE PLUG	105101100034	HT250	1	64	HEX HD CAPSCREW	101001120114	Q235	6
48	* SOCKET HD CAPSCREW	101111580001	304SS	1	65	LOCKWASHER	111010100012	Q235	6
49	* IMPELLER WASHER	111203000061	304SS	1	66	HEX HD CAPSCREW	101001120112	Q235	6
50	* IMPELLER	302212000006B	QT450	1	67	* INBOARD BALL BRG	106020053100	NA	1
51	* IMPELLER ADJ SHIM SET	188200400505D	304SS	7	68	* IMPELLER SHAFT	305210000006Q	4140	1
52	* MECHANICAL SEAL	107420118751	S-S-FKM-316-630	1	69	* SHAFT KEY	110011038312	304SS	1
53	* O-RING	131000340570	NBR	1	70	* OUTBOARD BALL BRG	106020053110	NA	1
54	SEAL PLATE	303212000006A	HT250	1	71	RETAINING RING	112040000055	65Mn	1
55	* GSKT, SEAL PLATE	118200100312	ARAMID FIBERS	1	72	* O-RING	131000130355	NBR	1
56	* OIL SEAL	109020076120	NBR	1	73	BRG COVER , INBOARD	341200008106A	HT250	1
57	* O-RING	131000340571	NBR	1	74	* OIL SEAL	109020076120	NBR	1
58	LOCKWASHER	111011100058	304SS	4	75	LOCKWASHER	111010100038	Q235	6
59	HEX HD CAPSCREW	101011508134	304SS	4	76	HEX HD CAPSCREW	101001380114	Q235	6
60	SIGHT GAUGE	114200000003	304SS	1					

\*INDICATES PARTS RECOMMENDED FOR STOCK.

IF YOUR PUMP IS NOT A STANDARD PRODUCTION MODEL, CONTACT THE M&C PUMPS CO.,LTD TO VERIFY PART NUMBERS.