

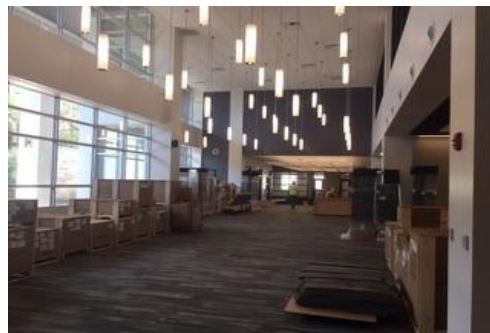
Corporate Overview

BSF Electric, LLC is a Florida State licensed electrical contractor firm with MBE and DBE certifications. Serving the high demands of the Tampa Bay and Tri County areas. There are many large electrical companies that bid on projects just to obtain the contracts. However, they are not able to provide quality work, remain within budget, or under bid on contracts. These contractors are focused on profit only and not the needs of the customer or their satisfaction. We are a small business with 20+ years of “hands on” electrical industry experience. We make quality work, meeting deadlines and customer satisfaction our priority!

- **Partnered Solutions** – the ability to partner & join forces with general contractors to accomplish goals
- **Gold Standards** – revered for our professionalism and industry expertise
- **Comprehensive industry experience** – subject matter experts offering industrial & engineering guidance
- **New Construction**-Renovations, Design Build
- **Commercial** -Wiring Structured Cabling, Voice Control, Data/Network, as well as CATV/Video drops Installation
- **Indoor/Outdoor Lighting** Repair and Upgrades
- **Fluorescent Lighting and Ballasts, and Retro-Fit LED** Replacements
- **Transformers/Power Panels** – New and Upgrades
- **Substations/Switchgear** Services and Installations
- **Uninterruptible Power Sources (UPS)**



BSF Electric



Key Differentiators

- ✓ Small business with 20 years plus hands on experience in the electrical industry
- ✓ Bi-lingual Spanish speaking (*Se Habla Español*)
- ✓ Innovations with training, technology, and quality control
- ✓ Great service not only to our clients but to our employees as well
- ✓ Understand how to keep a project on budget during design while working collaboratively with our team
- ✓ Lean construction management approach

Project History

In the past 5 years BSF has worked in collaboration on several large projects including:

- * **St Joseph South**
- * **Morton Plant**
- * **Clearwater**
-C.U.P. build, and new power distributed throughout the campus
- * **Adler Building Substation**
-Build and Renovation.
- * **Doyle Tower-**
-Build the new Clearwater/ St Petersburg Library
-The Steinbrenner Field Clubhouse addition

Pertinent Data

Duns# 028243875
 NAICS# 238210, 238990
 Cage Code (in process)
 Contractor’s License:
 #EC13007217

