



VTM

PROFESSIONAL SERVICES

VINTON MOTON, Owner
321.609.0735
vinton.moton@vtmprofessionalservices.com
vtmprofessionalservices.com



CAPABILITY STATEMENT

PAST PERFORMANCES

- ED'S CRANE SERVICE
- BIG IRON INTERNATIONAL
- G & C WELDING SPECIALIST, LLC
- FLORIDA POWER & LIGHT (FPL) Martin Plant
- CHILLER LIFTS Orange County Convention Center
- BAUSCH & LOMB Roof Top Units (RTU) Lifts
- FAA BEAM LIFT

CORE COMPETENCIES

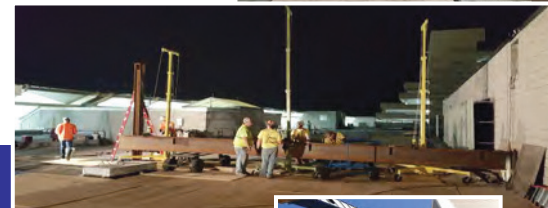
VTM Professional Services offers heavy steel and rebar detailing.

We have experience not only in detailing steel and estimations, but can also produce crane lift plans for lifting and setting heavy steel bridge components.

VTM also offers **CAD SERVICES** utilizing AutoCAD, Revit, SolidWorks and 3D lift plan software. Outsource your CAD needs to a full-service company that can handle small, one-time projects and larger ongoing contracts.

WE SPECIALIZE IN:

- ✓ STEEL & REBAR DETAILING
- ✓ ARCHITECTURAL PLANS
- ✓ BIM MANAGEMENT
- ✓ HVAC MECHANICAL DESIGN
- ✓ RIGGING DESIGN, CRANE LIFT PLANS
- ✓ OFF-LOADING PLANS
- ✓ JACKING, ROLL-OFF PLANS
- ✓ CUSTOM CAD SERVICES



COMPANY DATA

CERTIFICATIONS: DBE, SBE (FDOT)
MBE (City of Orlando)
NAICS: 541340 | **DUNS:** 107242888

137 S. Courtenay Pkwy #693, Merritt Island, FL 32952