



ITC HOTEL

RESPONSIBLE LUXURY




ITC RAJPUTANA

JAIPUR

THE

LUXURY


COLLECTION®



ITC Rajputana commenced operations on 1st November, 1992. The Hotel offers 218 rooms (including 17 suites) which reflect high quality aesthetic standards. Situated on a 6 acre site in the heart of Jaipur, it is 14 km from the airport and 0.5 km from the railway station.

The land on which the hotel stands, is known as 'Atal Van' and was earlier the residence and rose garden of Mr. Amar Nath Atal, who was the Finance Minister of the State of Jaipur.

The hotel pays homage to "Rajpootana", the citadel of the brave and chivalrous Rajput clan. Created in the style of a cluster of buildings with red brick exteriors, ITC Rajputana has an unusual and interesting architectural plan. In its design, varying heights are linked by corridors around a central courtyard, which features a large swimming pool. Traditional Rajasthan elements including long corridors, courtyards and lattice work are seen here in a modern uncluttered and contemporary idiom. We might say that ITC Rajputana creates both the "Spirit" and "Ethos" of a Rajasthan "Haveli"



ITC Rajputana- A Luxury Collection, Jaipur!



KEY FACTS

ADDRESS: PALACE ROAD, JAIPUR 302006

TELEPHONE NO: +91 (0)141 5100100

FAX NUMBER: +91 (0)141 5102102

E-MAIL: itcrajputana@itshotels.in

WEB SITE: www.itshotels.in

STAR CLASSIFICATION: 5 STAR DELUXE

DISTANCE: 14 KMS FROM THE AIRPORT

LOCATION: DOWNTOWN



HOTEL LOBBY



HOTEL LOBBY



HOTEL LOBBY



PRESIDENTIAL SUITE



PRESIDENTIAL SUITE



Be transported to the courtly grandeur that spells out the splendid and magnificent history of the Rajputana region, wrapped in complete luxury.

THIKANA SUITE



The hotel offers 16 Thikana suites. As a tribute to the erstwhile 'Princely States of Rajpootana', the 16 suites are named: Bikaner, Jaisalmer, Dungarpur, Alwar, Bharatpur, Udaipur, Jodhpur, Banswara, Tonk, Jaipur, Kota, Karauli, Jhalawar, Kishengarh, Sirohi, and Bundi.

THIKANA SUITE



RAJPUTANA ROYALE



These rooms offer a world where you can experience the finest in hospitality. The gracious elegance of the decor and warmth of personalized service makes your stay a truly memorable experience.

RAJPUTANA CHAMBER



These rooms are designed to meet the needs of the discerning business traveler on the move. They pioneer a tradition in corporate hospitality, setting a premium on discreet efficiency and business related services. The guest rooms are an elegant combination of luxurious accommodation and executive

EXECUTIVE CLUB



These rooms are designed to meet the needs of the discerning business traveler on the move. They pioneer a tradition in corporate hospitality, setting a premium on discreet efficiency and business related services. The guest rooms are an elegant combination of luxurious accommodation and executive workspace.

ROOM CATEGORIES & SUITES

There are 218 keys in the hotel, divided into four categories:

- Executive Club : 98 keys with 29 sq m area
 - Rajputana Chamber : 45 keys with 30 sq m area
 - Rajputana Royale : 58 keys with 31 sq m area
 - Thikana Suites : 16 keys with 46 sq m area
 - Presidential Suite : 01 key with 125 sq m area
-
- We have 14 smoking rooms and 204 non smoking rooms

BUSINESS CENTRE



RESIDENT LOUNGE



DINING

Home to some of the finest dining experiences of the city. The hotel offer its guest a cornucopia of dining options: “Peshawri” – extension of our award winning Bukhara restaurant brand, offers diners the robust flavors of the North – West Frontier, complimented by its rustic rugged décor and Show kitchen. “Jaipur Pavilion” – our 24hrs restaurant and coffee shop offers diners a fine a’ la Carte selection encompassing flavors from various regions of India and around the world. “Jal Mahal” offers guest the finest buffet spread in the city and also gives guest an opportunity to savor regal flavors with the signature Royal Repast of Rajasthan menu.

“Sheesh Mahal” & “Jharokha” Bars with a fine selection of Scotch, Single Malts and wines are the ideal venue to wind down after a long day and enjoy your drink.

JAIPUR PAVILION



The Jaipur Pavilion is the hotel's all day dining restaurant and a popular meeting point. The Restaurant draws its name from the "Chandravanshi" clan, said to be descendants of the 'Moon God'. In keeping with its name, is its blue ceiling and tiny star-like lights.

JAL MAHAL



The restaurant offers guests the distinct flavors of the Royal Repast of Rajasthan, as well as a multi-cuisine buffet with a choice of food for breakfast, lunch and dinner. The fountains in the center of the restaurant and live performances by 'Ghazal' singers, add to the regal ambience.

PESHAWRI



Bringing alive the robust flavors of the North-West Frontier region, this is where guests can experience this delectable cuisine with a lavish spread of delicious kebabs – both vegetarian and non-vegetarian - created for guests in a show kitchen.

SHEESH MAHAL



The Sheesh Mahal is a bar located at the Lobby level. It takes its inspiration from the traditional hall of mirrors that are so much a part of Palaces in Rajasthan. Myriad tiny mirrors embedded in the walls add a starry glitter to the muted lighting in the room.

MEETINGS / CONVENTIONS / BANQUETS

The hotel offers a variety of venues which can cater to a multitude of requirements. The venues include a choice of 3 meeting rooms for up to 18 guests, "Hawa Mahal" a 790 m² open air venue and a 445 m² rectangular shaped column-free ballroom "Suryavanshi Mahal" which can be divided into three separate function rooms.

These venues offer the perfect setting for symposiums, product launches, banquets or corporate meetings.

Our dedicated team of conference and banqueting specialists can arrange for the latest audio visual equipment and provide professional assistance to complement any part of your conference, function or event.

MEETINGS / CONVENTIONS / BANQUETS

Venue Seating Capacity

VENUE	Dimensions in Sq m (L x W x H)	Area (Sq m)	Area (Sq ft)	Theatre	Cluster	U-Shape	Double U-Shape	Reception	Formal
Suryavanshi Mahal I	10x15x4	150	1600	100/120	50/55	35/42	60/70	75/100	64/88
Suryavanshi Mahal I & II	20x15x4	300	3200	300/340	100/110	65/75	100/120	300/350	128/160
Suryavanshi Mahal I,II & III	30x15x4	450	4800	400/450	150/155	90/100	135/150	500/600	224/256
Pre Function Area	30x8x5	240	2550	-	-	-	-	-	-
Boardroom	9x4.2x3.6	37.8	400	-	-	15/18	-	-	-
Conference Room I	7x3.6x3.6	25.2	270	-	-	10/12	-	-	-
Conference Room II	7.3x3.6x3.6	26.2	280	-	-	10/12	-	-	-
Hawa Mahal	24.6x27	664.2	8500	500/550	150/160	-	-	400/450	200/240
Pool Side	28.2x15	423.0	4551.48	-	-	-	-	300/350	300/350

MEETINGS / CONVENTIONS / BANQUETS


Suryavanshi Mahal



Round Table set for conference

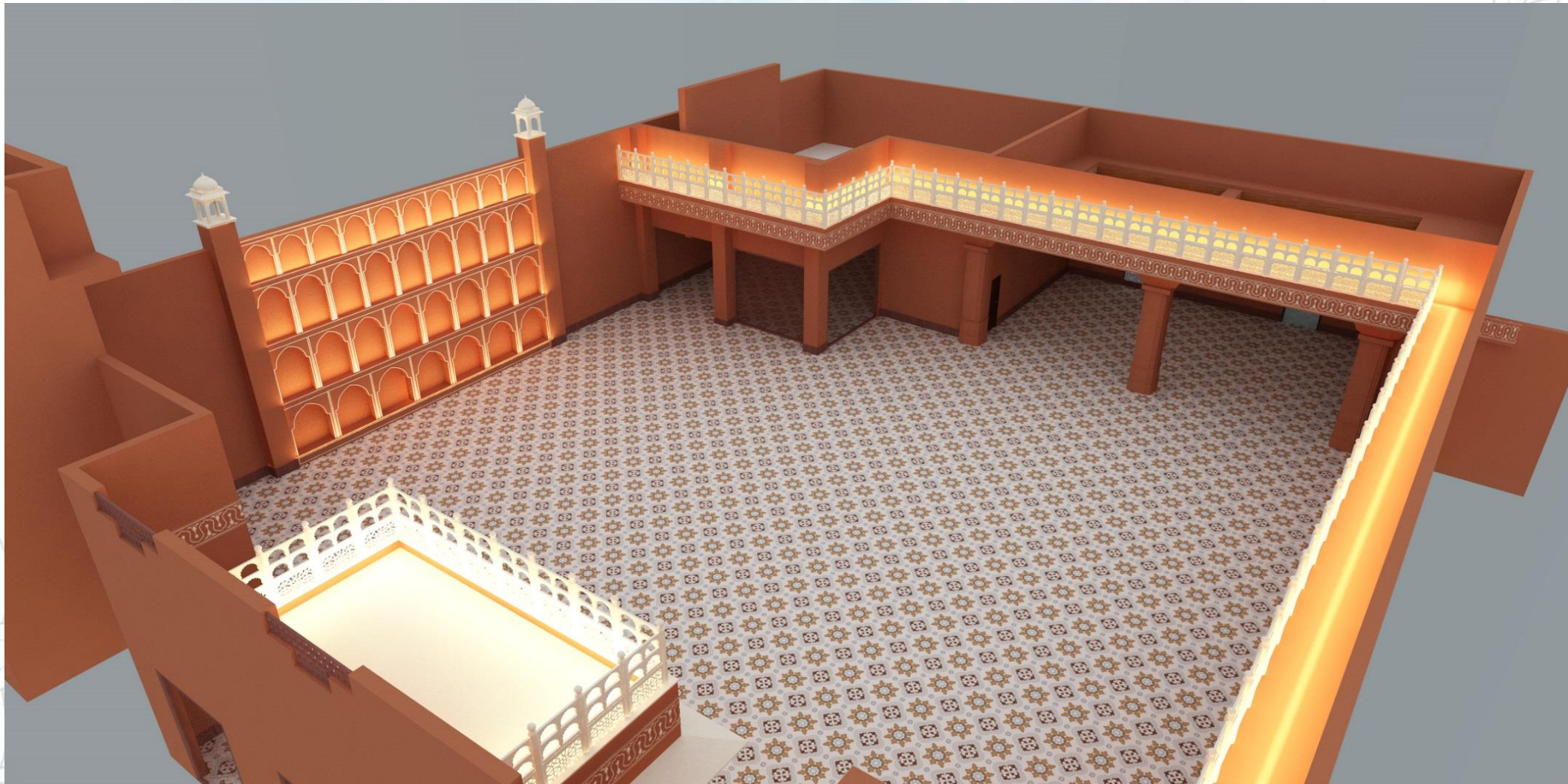
POOLSIDE



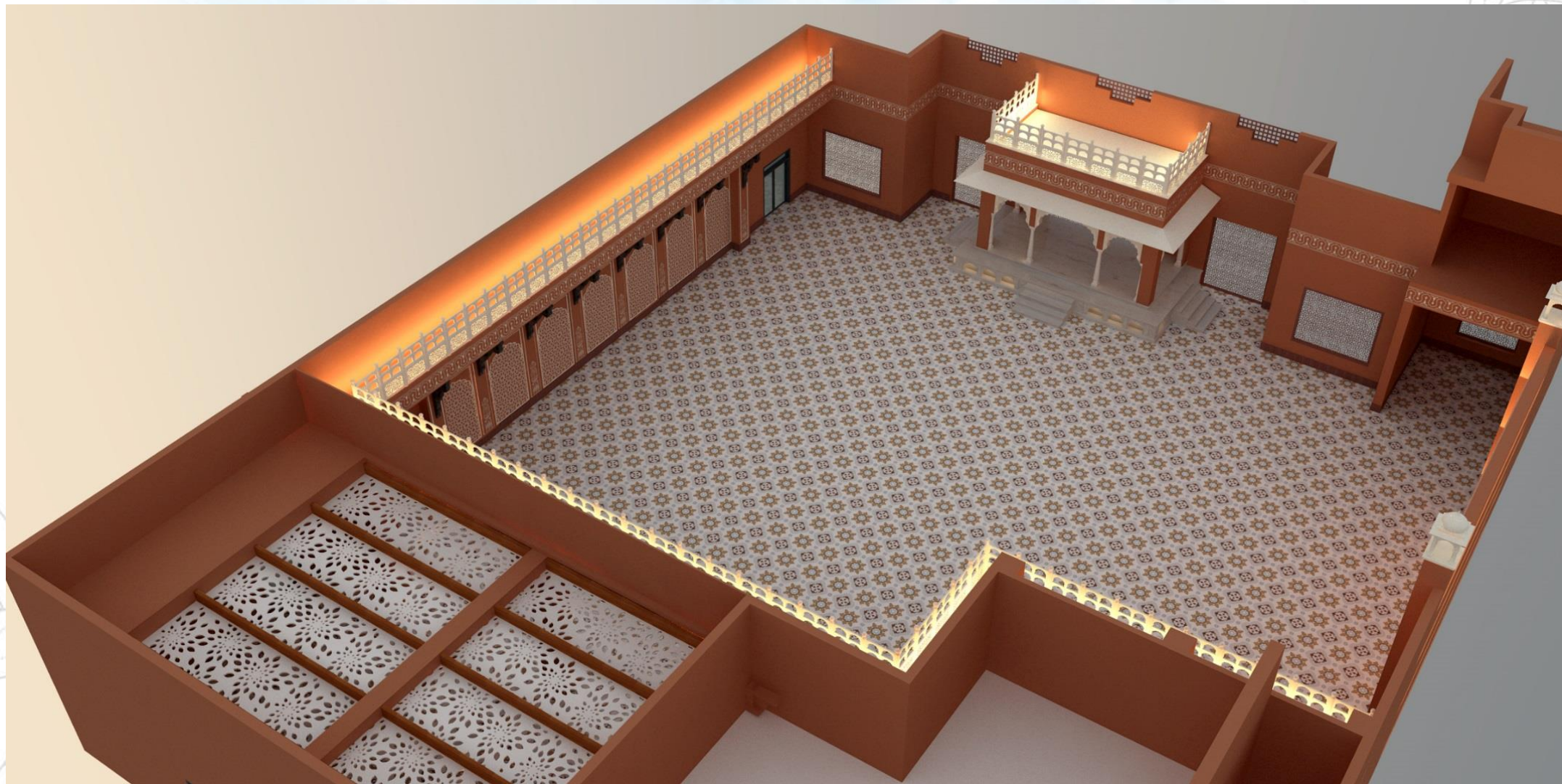


**WHAT'S NEW AT
ITC RAJPUTANA
JAIPUR.**

Hawa Mahal-The Royal New Look



Hawa Mahal-The Royal New Look



Hawa Mahal-The Royal New Look



Hawa Mahal-The Royal New Look



MEETINGS / CONVENTIONS / BANQUETS

Outdoor Catering



Set up at Nahargarh Fort

MEETINGS / CONVENTIONS / BANQUETS

Outdoor Catering



Set up at City Palace



Kaya Kalp - The Spa with its luxurious interior design is designed to start your sensory journey as soon as you enter, with its delightful aroma and luxurious surroundings. The Spa offers Indigenous Indian and western style therapies using luxurious natural products. Besides its signature massages, it also offers an array of hair and beauty treatments.









GYM



Health Club offers a state-of-the-art gymnasium and steam & sauna facilities, while Kapila is a tranquil pool amidst serene surroundings.

AWARDS & ACCOLADES

- LEED® Platinum rating
- UNESCO Best Water Management - Hotel Category
- ISO 14001 & 22000 Certifications
- Golden Peacock ECO Innovation Award
- Green Tech Environment & Safety Awards: Gold Award (in Hotel Sector for outstanding achievement in Environment Management)
- PATA Environment Award
- British Safety Council Safety Award
- Rajasthan Energy Conservation Award – 1st (in Hotel Sector)
- Times Food Guide Awards 2012 & 2013
- Jaipur Pavilion: Best All Day Dining
- Jal Mahal: Best Rajasthani Cuisine & Best Multi Cuisine (2013)
- Peshawri: Best North Indian Cuisine
- Time Out Food Awards 2011: Peshawri - Best Restaurant in Jaipur (Peoples Choice)





THANK YOU