

***Our Daily Bread  
Community Outreach  
Center, Inc.***

PO BOX 100793  
Milwaukee WI 53210



For more information about the  
Prenatal/Child Care Coordination Program

**Contact us:**

Email: [ourdailybreadmil@att.net](mailto:ourdailybreadmil@att.net)

Office: 414-755-0535

Cell: 414-301-3732

Follow us on the web: [ourdailybreadmil.org](http://ourdailybreadmil.org)

Facebook: Mommy & Baby-Live Well, Be Well

***Reach One,  
Teach One Mom at a Time!***

**Referrals**

Ascension St Joseph

Froedtert Hospital

UnitedHealth Care

MHS Health Insurance

ICare Insurance

Blanket of Love

Impact 211

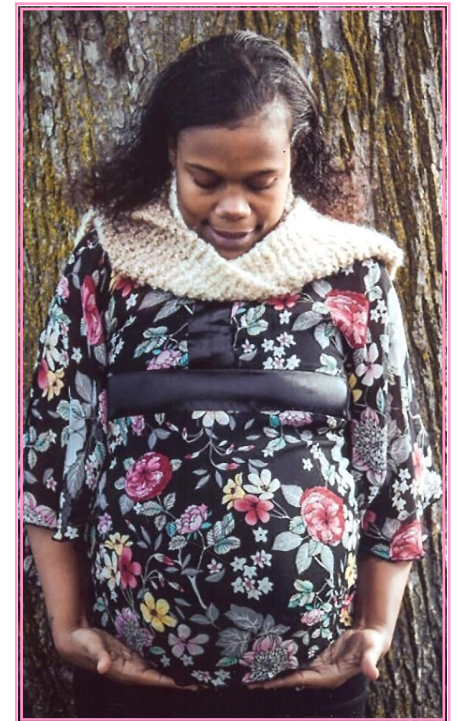
CareNet

Walk-ins

***If you need support with your  
pregnancy, we are one step away.***



***Mommy & Baby -  
Live Well, Be Well  
Prenatal /Child Care  
Coordination  
PNCC & CCC***



***HEALTHY THINKING + HEALTHY  
EATING = HEALTHY BIRTH***

## Background

Our Daily Bread Community Outreach Center, Inc. (ODB) is a 501 C (3) non-profit organization that was founded in November 2004.

**Mommy & Baby Prenatal Care Coordination Program (PNCC) and Childcare Coordination (CCC)** was established to support mothers with ongoing resources, education, workshops, training and much more.

**The goals of Mommy & Baby PNCC/CCC are:**

- Decrease infant mortality
- Decrease health disparities
- Increase equity in health, education, and housing
- Foster healthy lifestyles before and after pregnancy
- Increase Better Birth Outcomes

**Our Daily Bread's PNCC/CCC Program components include Case Management on:**

- Regular Home Visits
- Breastfeeding Training/ Doula Service
- Nutritional Education
- Parenting Classes
- Reproductive Lifespan
- Fun-filled Community Events
- Client's Referral Program
- Baby's Corner with clothing
- FREE Gifts for Mommy & Baby
- A Better Us Support Group
- Professional Community Health Worker

## What is Prenatal Care Coordination?

Prenatal Care Coordination is a Medicaid and BadgerCare Plus Program that helps pregnant women get the support and services that are needed to foster healthy living. This is a **FREE** service with no copayments.

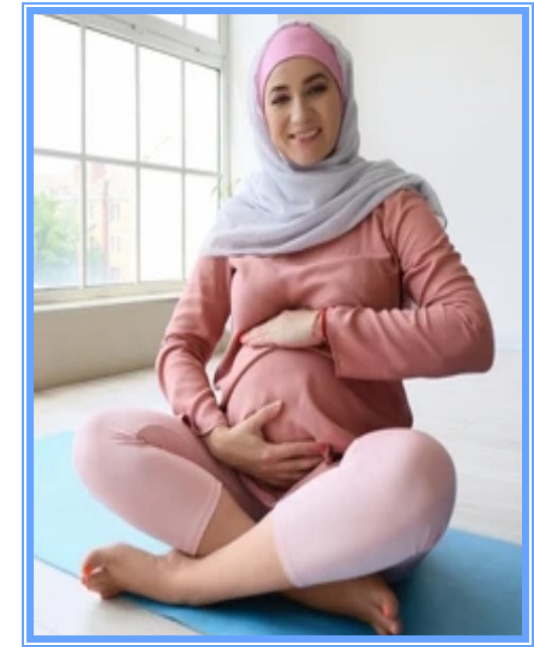
After enrollment, you will be paired with a Community Health Worker who will perform a variety of assessments, ascertain your current and previous pregnancies, health history, relationships, and worries.



**With Mommy & Baby - Live Well, Be Well Program**, your worker will personally walk you through your pregnancy with the aim to provide comfort and support to many of your challenges. Your Community Health Worker will also listen to your concerns and work one-on-one with you to provide a personalized, confidential Care Plan. At Our Daily Bread, it is our desire that you "Live Well" before the birth of your baby and you both "Be Well" after your delivery.



## Family Planning



### Testimonials

*"Our Daily Bread provided really good PNCC services. They helped me change my perspective of having a baby and encouraged me to stay focused"...* ~Kanesha G.

*"Our Daily Bread connected me to some valuable community resources" that prepared me for my bundle of joy...* ~Brittney M.