

Benefits of Off-Grid Solar

- ❖ No monthly power bills
- ❖ No trenching or running underground wires needed
- ❖ Reliable Power: works even during a power outage
- ❖ Renewable energy
- ❖ Quiet
- ❖ Freedom of shed placement: distance from house doesn't matter; you just need a South facing sunny spot.
- ❖ Battery backup stores power for night-time use



-Systems sold and shipped to manufacturer for on demand install.

-Features quick connects for hassle free install.

-Sales and Installation services/ training provided by EcoEthic Solar LLC



Lexington, North Carolina

(336) 250-1284

www.ecoethicsolar.com

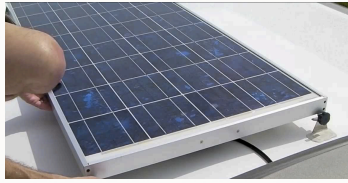


Get the solar advantage with the "Backyard SunSaver"



Reliable power for lights, charging power tools, she sheds, man caves, and even tiny home setups.





How Does Off-Grid Solar Work?

❖ An off-grid solar power system (AKA stand alone power system) works by generating electricity from solar panels (which comes in as DC current) and storing the energy in a battery or battery bank using a charge controller. The electricity is then converted into AC current using an inverter, so that it can power the shed and appliances. Storing electricity in a battery, or bank of batteries, makes it possible to utilize solar energy even at night or during times when there is less sun exposure.

SunSaver Product Line Features:

- LCD display
- 3 LED indicators and operating status
- ON/OFF rocker switch for AC output control.

- *Protections:*
- Overload, short circuit, overcurrent, under voltage protection and reverse protection.
- Intelligent variable speed fan to efficiently dissipate heat and extend system life.

- *Expandable up to 7.2kWh of battery backup and 1,600W of solar.*

Backyard SunSaver

Running power from a home to a shed can cost thousands. Get the solar advantage by adding solar power and battery backup to your shed.

SunSaver Base Unit

1.2kWh with 400W Array and 3kW Inverter

Run LED Lights, Fan, 1/2HP Garage Door Opener, Charge Li Tool Batteries
This Unit is best for adding convince to traditional (periodic) shed use.

SunSaver Plus Unit

2.4kWh with 800W Array and 3kW Inverter

Run LED Lights, Fan, Charge Li Tool Batteries, 1/2HP Garage Door Opener, a Mini fridge
This Unit is best for traditional (periodic) shed use.

SunSaver Extra Unit

4.8kWh with 1.6kW Array and 3kW Inverter

Run LED Lights, Fan, Charge Li Tool Batteries, 1/2HP Garage Door Opener, a Mini fridge, small Minisplit for cooling.

SunSaver Ultra Unit

7.2kWh with 1.6kW Array and 3kW Inverter

Run LED Lights, Fan, Charge Li Tool Batteries, 1/2HP Garage Door Opener, a Mini fridge, TV, Minisplit for cooling. Other 120V appliances can be run as well (microwave, coffee pot, laptop, printer), but in small batch combinations. Battery expansion should be considered if your planned power use is this entire list **or** contact us for a custom designed system for full time use.

See [SunSaver Runtime Sheet](#) online or through your sales representative for details of appliance runtimes (individual and combination loads) at night from a full battery bank with no active charging in play.