



HISTORY & ART
 CENTER
 Madison, Indiana

The Gazette

JEFFERSON COUNTY HISTORICAL SOCIETY

Summer/Fall 2024

‘PARIS STYLE’ exhibit a smashing success

EXTENDED! Our special exhibit, “Paris Style,” curated and designed by Ralph London, owner of the Betty Jefferies ladies’ shop at 129 E. Main St., Madison will remain open through Saturday, Oct. 12. Admission to the exhibit is included in the \$5 fee (free for JCHS members, of course) to tour the museums.

London’s store, named for his mother, is housed in the same location as the iconic Paris Style store, which was one of the top women’s and children’s ready-to-wear apparel shops on Main Street from the late 1940s to the mid-1990s.

It was part of a chain of seven stores owned and operated by Abe and Sylvia Osipe, who opened their first store in Seymour, Ind., in 1934. Other locations included Columbus, Crothersville, Salem, Scottsburg, and Washington.

Paris Style became an official fashion store of *Seventeen* magazine in the 1940s and the Madison store retained that status through the 1970s. Madison’s *Seventeen* Fashion Board hosted popular and well-attended runway shows at various venues in the city, with models sporting the newest styles on the runway.



Ralph London received the official family “seal of approval” for his Paris Style exhibit on Sept. 27 from Jackie Adams, daughter of Abe and Sylvia Osipe, proprietors of the women’s fashion store that was a mainstay on Main Street for nearly 50 years. Adams visited Madison just week specifically to see the exhibit of items that had been purchased at the Madison store from the late 1940s to the mid-1990s.



— Photo from JCHS archives



Art is now part of History Center logo



Introducing our new website and online library catalog

This spring, we launched HistoricJeffersonCounty.org, our brand-new website with lots of new features.

“Annals from the Archive” is our new blog that will feature stories about people, places and events that have shaped the first 200 years of Jefferson County’s history.

Our “Plan Your Visit” page shows you what to expect when you come to see the museums: Our main local history museum located in the History & Art Center, as well as our Train Station Museum, telling the story of Indiana’s first railroad line that took passengers and goods from Madison to Indianapolis in the early 1800s.

We also have partnered with Libib.com, through which you can peruse our entire library catalog from the comfort of your own computer or device. Find out before your visit if we have a book you need to read for your research in our Research Library and Archives. In time, we will also have searchable indexes of our collections.

Have a research request? Our site now includes an online form that allows you to tell us what kind of information you are seeking. This, and the opportunity to schedule your visit online, will help our dedicated and amazing staff more efficiently assist you when you visit to do in-person research.

We continue to add information about our various collections, including our 21,000 digital photograph database, so visit often!



VIEWS OF JEFFERSON COUNTY

A curated collection of historic photographs featuring the City of Madison and the townships of Jefferson County.

[View](#)

Blog: *Annals from the Archives*



August 26, 2024

QUITE A RIDE

[Learn more](#)



Spring Student Art Show

The 2024 student art show was still, after 22 years, a huge success! More than 500 works of student art from area schools were displayed. Students in grades K-12 were eligible; pieces were submitted by their art instructors.

Prizes given to the first-place winner in each grade level. The open house was held on April 25 and more than 800 parents, grandparents and students attended the event.

This event was co-sponsored by Tri Kappa, Beta Omega Chapter, who provided funds for refreshments and assistance during the open house.

The Southern Indiana Folk School has been very successful, thanks to the hard work of Margaret Nowling and Happy Smith, who coordinate the folk-art classes that meet in the lower level of the History & Art Center. Artwork made by students participating several classes this spring is now on display in the east hallway in front of the Jefferson Room through Sept. 30. Classes include “Wet Felted Vessel,” “Crazy Quilt Embellishment,” and “Shibori Indigo Dyed Napkins.”

Stay tuned as more classes are offered [here](#). Sign up at [Tickets.madtixevents.com](https://www.madtixevents.com).

Next on the calendar:

Sept. 21: Straw Stars: Sarah Thompson

Oct. 19: Seasonal Applique: Margie Renschler

Nov. 2: Springerlie cookies: Shannon Datillo & Sarah Jane Green

Nov. 20: Mocktails: Randy and Mark of NEAT



History & Art Center welcomes two new faces



Phyllis Codling McLaughlin



Lisa Smitley

Once again, the Center has reopened to the public on Saturdays, from 10 a.m. to 3:30 p.m. Lisa Smitley was hired in June to help sell tickets during Madison in Bloom, but her primary role is to welcome visitors every Saturday.

In January, Phyllis Codling McLaughlin joined the Jefferson County Historical Society staff, specifically to assist with social media, the new website, and communications. Formerly a newspaper journalist and (always a writer), she also brings years of experience in genealogical and historical research and loves to help guide family historians who visit the Research Library and Archives.

Passion project comes to fruition

Four years ago, JoAnne Spiller, JCHS director of education, was researching famous Madison and Jefferson County residents from the past and present for a children's book when she ran across an article about Bill Smith in the archives here at the History & Art Center, as well as a lapel button and pendant donated to our collections.

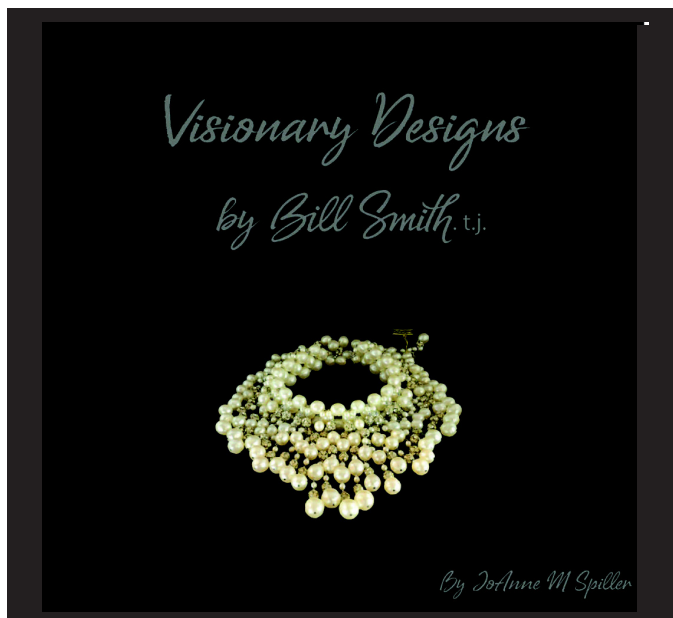
"I took to the internet to learn more ... and became fascinated with his story—especially his disappearance from the jewelry design world," she said. Her obsession led her to do research in New York City, collecting hundreds of newspaper and magazine articles, book references, and information about past exhibits.

Madison born and raised, Smith grew up at 410 West Fifth St., a son of Elizabeth Foree and brother of Gladys Smith. He attended Broadway High School, but was one of the first Black students to attend Madison High School after desegregation, graduating in 1951.

The JCHS collection of Smith's work, including pieces loaned by Spiller, were featured in a special exhibit at the Fort Wayne, Ind., Museum of Art earlier this summer.



Above: Madison resident Sally McWilliams looks on as author JoAnne Spiller signs her copy of "Visionary Designs by Bill Smith, t.j." during a book signing in the Madison Passenger Station museum on Saturday, Aug. 30. Below: The cover of the new book, which catalogues hundreds of Smith's designs for Richelieu and other New York-based jewelers from the 1950s to the 1980s. Left: Bill Smith at work on a design.



Madison in Bloom, 2024 edition, drew crowds, raised funds

Mother Nature blessed our part of southeastern Indiana for two straight weekends in June, making sure the weather was picture perfect for 2024's Madison in Bloom.

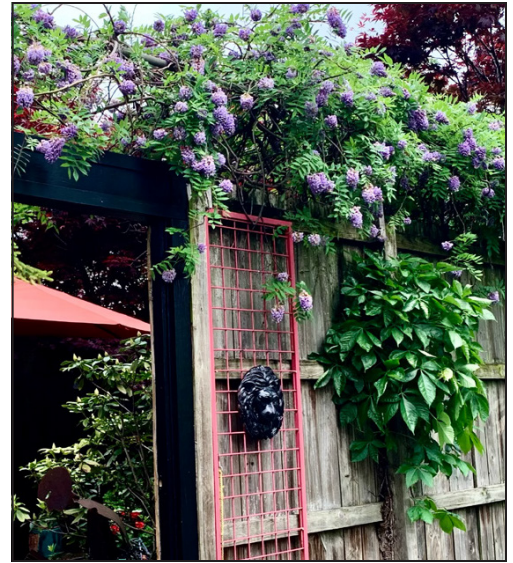
This is main fundraiser for the Jefferson County Historical Society, and has been held every two years since 1994 (except, of course, during COVID in 2020). We wish to extend our gratitude to the participating homeowners and to volunteers Sally McWilliams and Tom Stark for helping to make this year's event happen.

As is the case every year, the stars of the show the seven downtown homeowners who opened their private gardens to more than 700 ticket-holding guests.

They include Bob and Tammy Courtney, Madison's mayor and first lady; Mike and Linda Pittman; Jim and Sandy Dierdorf; Brad Miller and David Powell; Mark Cooley and Randy Lakeman; Jim and Linda Wenning; and Jim and Margo Olson.

The Jefferson County Historical Society board and History & Art Center staff also extends sincere thanks to these homeowners, who generously opened up their private gardens to make this year's event such a big success.

So, now we are looking ahead to the next garden tour in June 2026. If you want your private garden included, or you want to volunteer, send an email to info@historicjeffersoncounty.org.



Clockwise from top: The Powell-Miller "secret" garden; Jim and Sandy Dierdorf relax in their side garden; Linda Wenning adds the finishing touches to her garden; and the colorful Lakeman-Coleman garden. Photos courtesy of Sally McWilliams.

JCHS Membership: Join or Renew!

Please enroll me as a member at the selected level:

Individual		Business/ Organization
<input type="checkbox"/> Thomas Jefferson Circle	\$1,000	<input type="checkbox"/>
<input type="checkbox"/> William Henry Harrison Circle	\$500	<input type="checkbox"/>
<input type="checkbox"/> Drusilla Cravens Circle	\$250	<input type="checkbox"/>
<input type="checkbox"/> John Paul Circle	\$100	<input type="checkbox"/>
<input type="checkbox"/> Sustaining	\$50	<input type="checkbox"/>
<input type="checkbox"/> Family	\$35	
<input type="checkbox"/> Individual	\$25	
<input type="checkbox"/> Student	\$15	

Make checks payable to: JCHS, 615 W. First St., Madison IN 47250

Name _____
 Address _____ City _____
 State _____ Zip _____ Phone _____

BOARD OF DIRECTORS

Diane Munier, president
 Marilyn King, secretary
 Jan Vetrhus, treasurer
 Ray Livers, Sarah Prasil,
 Frank Taff, Terry Suiter

STAFF

John Nyberg, executive director
 JoAnne Spiller, education
 Carol Collelo, archivist
 Phyllis McLaughlin, genealogist/
 communications

Your gift keeps history alive!

Getting older sometimes has its perks: If you are age 70½ and you have an IRA, you can reduce your future tax burden by making a Qualified Charitable Distribution (QCD) donation directly to the Jefferson County Historical Society.

Even better, if you are age 73, you can direct the Required Minimum Distribution (RMD) from your IRA to JCHS, as well.

It's a great way to support our nonprofit organization that has been working hard since 1850 to preserve the fascinating history of the city of Madison and Jefferson County's towns and townships.

Another option is to bequest a gift to JCHS in your will; these gifts can be made through one of the following endowments at the Community Foundation of Madison and Jefferson County: "Save Our History," "Collections & Restoration, Lee Rogers," or "Archives and Research Jefferson County Historical Society Endowment."

For more information, contact the Community Foundation at (812) 265-3327 or info@cfmjc.org, or by contacting JCHS Executive Director John Nyberg at (812) 265-2335 or director@historicjeffersoncounty.org.

JCHS is a 501(c)(3) nonprofit organization.

(812) 265-2335
 Email: info@historicjeffersoncounty.org
 HistoricJeffersonCounty.org
 Address Service Requested
615 W. First St., Madison, IN 47250
Jefferson County Historical Society

