

**Jefferson County History & Art Center
615 W. First Street
Madison, IN 47250
812-265-2335**



Bill Smith Jewelry Collection & Ephemera
Catalog
Part 1

This catalog serves as a menu for our traveling exhibit of our Bill Smith jewelry collection. Borrowers may select as many or as few pieces as they like to complete their exhibit.

Magazines, books, and photos are listed on the last page. We can also supply other visuals such as high resolution scans of advertisements and magazine photos to be used with proper credit to source.

You may contact our curator, JoAnne Spiller, at her website, <https://www.joannespiller.com> to make arrangements for the loan of items and to view her personal catalog. She works on contract with the museum for this project. JoAnne has pieces that complete collections in this catalog and can also be viewed at her website, [joannespiller.com](https://www.joannespiller.com).

Original and Early Designs

1.



Gold tone brushed metal geometric brooch, 3-1/4" x 3". 2022.78.12. Signed "Sst.J". Gift of CLN, Jr.

2.



Gold tone gas pipe bracelet, 4" dia. x 1" high. 2022.78.50. Unsigned, verified Sst.J design. Gift of CLN, Jr.

3a-c.



3 gold tone hammered bracelets. Ap- proximately 3"x2" each. 2022.78.49a-c. Gift of CLN, Jr.

4.



Bright blue cabochon brooch surrounded by rhinestones, 2-1/4" x 2-1/2". 2022.78.02. Un- signed, Richelieu attributed. Gift of CLN, Jr.

5.



Gold tone brooch, 3” x 3”, with 4 pair of claws holding faux pearls. Deep mulberry center cabochon. Unsigned. Sst.J attributed. 2022.78.04. Gift of CLN,

6.



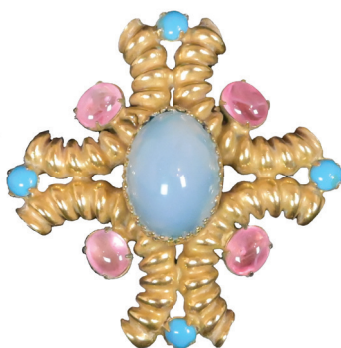
Gold tone brooch, 2-3/4” x 2-3/4”, with 4 claws holding faux pearls and 4 blue cabochons. 2022.78.01. Unsigned. Sst.J Attributed. Gift of CLN, Jr.

7.



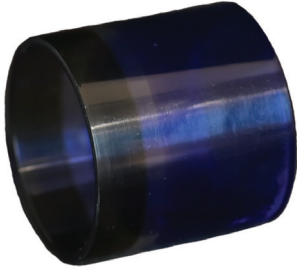
Gold tone fluted brooch, 3” x 2-1/2”, with small turquoise beads and light pink center cabochon. 2022.78.07. Sst.J attributed. Gift of CLN, Jr.

8.



Gold tone twisted metal brooch, 2-3/4” x 2-3/4”, with prong-set blue and light pink cabochons with larger light blue center cabochon. 2022.78.05. Unsigned. Sst.J attributed. Gift of CLN, Jr

9.



Resin cuff in palette ranging from purple to green. 2-3/4" dia. x 2" wide. 2022.78.47. Gift of CLN, Jr.

10.



Gold tone Greek key pattern ring with 1-1/2" purple cylinder. 2022.78.38. Unsigned Richelieu. Gift of CLN, Jr.

11.



Resin square bangle, 2-3/4" dia., with tortoiseshell pattern. Unpolished. 2022.78.46. Gift of CLN, Jr .

12 a-c



Unisex link bracelets, 7". 2022.78.51-53. Unsigned Richelieu. Gifts of CLN, Jr.

13.



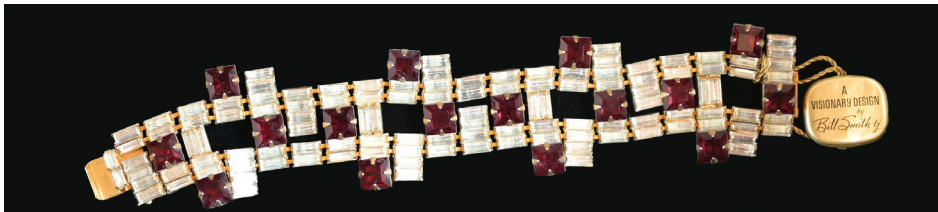
Gold tone cup shaped brooch, 2-1/2” x 2-1/2”, with red, white, and blue resin stones. 2022.78.21. Unsigned Richelieu. Gift of CLN, Jr.

14.



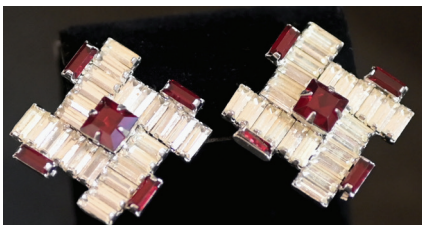
Gold tone bar brooch, 3” x 3-3/4”, with red cabochons and dangling blue cabochon and gold discs. Unsigned Richelieu. Likely a prototype as the cabochons on the bar don’t line up correctly. 2022.78.06. Gift of CLN, Jr.

15.



Gold tone bracelet, 7”, with prong set rhinestones and faux gems. Original hang tag. 2022.78.56d. Gift of CLN, Jr.

16a-b.



Silver tone earrings, 1” with prong set rhinestones and faux red gems. 2022.78.56a-b. Unsigned Richelieu. Gift of CLN, Jr.

17.



Gold tone square brooch, 1-1/2” x 1-1/2”, with prong set rhinestones and faux red gems. 2022.78.56c. Unsigned Richelieu. Gift of CLN, Jr.

18.



Gold tone wire drop earrings, 4". Unsigned. 2022.78.33. Gift of CLN, Jr.

19.



Carved black cameo brooch, 2-1/2" dia.
2022.78.03. Unsigned Richelieu. Gift of CLN, Jr.

20.



Gold tone filigree brooch 1-1/3" x 1" with
15x20mm center tortoiseshell cabochon.
2022.78.08. Gift of CLN, Jr.

Soap Bubble Collection



21.



Soap bubble earrings, 24mm, screw backs. 2023.03.13a-b. Gift of CLN, Jr.

22.



Necklace, 28" of braided pearls with 33mm center faux pearl. 2023.08.07. Unsigned Richelieu. Gift of CLN, Jr.

23a-i.



"Soap bubble" rings in a variety of colors and sizes. 2023.08.15a-i. Unsigned Richelieu. The clear ring may be unsigned Sst.J. Gift of CLN, Jr.

Metal Objects Collections



24.



25.



26.

24. Gold tone bun cover, 3" dia x 2-1/2" high. 2022.78.29. Original hang tag. Gift of CLN, Jr.
25. Silver tone hexagon bracelet, 2-1/3" dia x 1-1/4" wide. 2022.78.48. Unsigned Richelieu. Gift of CLN, Jr.
26. Silver tone bun cover, 3" dia x 2-1/2" high. 2023.08.11. Gift of CLN, Jr.

27.



28.



27. Silver tone square ring with silver center bead. 2022.78.39. Unsigned Richelieu. Gift of CLN, Jr.

28. Silver tone pyramid shaped ring, 1" tall. 2022.78.37. Unsigned Richelieu. Gift of CLN, Jr.

29-30.



29. Spring necklace, 11", with 32 mm caps and hook closure. 2022.78.78. Unfinished prototype for Richelieu. Gift of CLN, Jr.

30. Spring necklace, 11-3/4", with (2) 32mm caps and hook closure. Unfinished prototype for Richelieu. 2022.78.77. Gift of CLN, Jr.

31.



Silver tone necklace, 52", of 1/2" cylindrical beads. Attributed to Bill Smith of Richelieu. 2022.78.58. Gift of CLN, Jr.



32.



Gold tone mesh necklace, 26", with starburst detail. Missing center cabochon. 2022.78.79. Unsigned Richelieu. Gift of CLN, Jr.

33.



Wavy mesh belt, 28" long. Raised domes in various sizes. Hook closure. Unsigned Richelieu. 2022.78.28. Gift of CLN, Jr.

34.



Gold tone face pendant, 3" x 3". Signed Bill Smith of Richelieu 2023.47.01.

Asian Inspired designs for Richelieu



35.



Gold tone Chinese inspired lion brooch, 2-1/2" x 2-3/4". 2022.78.09. Unsigned Richelieu. Gift of CLN, Jr.

36.



Gold tone Chinese inspired lion brooch, 2-1/2" x 2". 2022.78.10. Unsigned Richelieu. Gift of CLN, Jr.

37.



Gold tone Chinese inspired lion brooch, 2-1/2" x 1-3/4". 2022.78.11. Unsigned Richelieu. Gift of CLN, Jr.

38.



39.



38. Gold tone panther, 2-1/2" x 2-7/8" on 36" chains. Hook closure. 2022.88.10.

39. Gold tone double panther, 2-1/4" x 1-7/8" on 36" chains. Hook closure. 2022.88.01.

Both items can be worn as necklace or body chain.

Zodiac Collections for Richelieu



40.



Gold tone zodiac Aries the ram buckle/brooch,
2-3/4" x 2-3/4". 2022.88.04. Gift of D and J Spiller.

41.



Gold tone zodiac Taurus the bull buckle, 3-1/2" x
2-1/4", 2022.15.13. Gift of D and J Spiller.

42.

Silver tone zodiac Gemini the twins buckle/brooch, 2-1/2" x 3-1/4". 2022.88.06. Gift of D and J Spiller.



43.



44.



43. Gold tone zodiac Cancer the crab buckle, 2-3/4" x 2-3/4". 2022.88.07. Gift of D and J Spiller.

44. Gold tone zodiac Cancer buckle/brooch, hand painted with green enamel, 2-3/4" x 2-3/4". 2022.78.15. Gift of CLN, Jr.

45.



46.



45. Gold tone zodiac Leo buckle/brooch, 3-1/4" x 4-1/2". 2022.88.09. Gift of D and J Spiller.

46. Silver tone zodiac Leo buckle, 3-1/4" x 4-1/2". 2022.78.14. Gift of CLN, Jr.

47.



Gold tone zodiac Virgo the virgin buckle/
brooch, 3-1/2" x 1-3/4". 2022.15.02. Gift of D
and J Spiller.

48.



Gold tone zodiac Scorpio the scorpion buckle/brooch,
2-3/4" x 3". 2022.88.02. Gift of D and J Spiller.

49.



Gold tone zodiac Sagittarius the archer brooch, 4" x 3",
2022.88.05. Gift of D and J Spiller.

50.



Gold tone zodiac Aquarius the water bearer buckle/brooch,
2-3/4" x 3-1/4". 2022.78.25. Gift of CLN, Jr.

51.



Gold tone zodiac Pisces the fish buckle, 3-3/4" x 2-1/2".
2022.78.16. Gift of CLN, Jr.

52.



Gold tone belt or necklace, 28" long, with all 12 signs of the zodiac. No clasp/closure. 2022.78.27. Unsigned Richelieu. Gift of CLN, Jr.

53.



Gold tone lion profile brooch, 2-1/2" x 2". 2022.78.26a. Original tag, signed Richelieu. Gift of CLN, Jr.



54.



55.



57.

56.



54. Gold tone adjustable ring, 1" dia. with image of zodiac Taurus. 2022.78.40. Original hang tag, Gift of CLN, Jr.

55. Gold tone adjustable ring, 1" dia. with image of zodiac Leo. 2022.78.41. Original hang tag. Gift of CLN, Jr.

56. Gold tone adjustable ring, 1" dia. with image of zodiac Aquarius. 2022.78.43. Unsigned Richelieu. Gift of CLN, Jr.

57. Gold tone adjustable ring, 1" dia. with image of zodiac Libra. 2022.78.42. Original hang tag. Gift of CLN, Jr.



58.



Gold tone zodiac Aquarius pin, 2" x 1-1/4".
2022.78.24. Gift of CLN, Jr.

59.



Gold tone zodiac Gemini pin, 2-1/4" x 2". Original hang tag. 2022.78.18a. Gift of CLN, Jr.

60.



Gold tone zodiac Virgo pin, 1-1/2" x 1".
2022.87.07.

61.



Gold tone zodiac Cancer pin, 2" x 2", with original hang tag. 2022.78.19. Gift of CLN, Jr.

62.



Gold tone zodiac Libra pin, 2-1/4" x 1".
2022.78.23. Gift of CLN, Jr.

63.



Gold tone zodiac Scorpio pin 2-1/2" x
1-1/4". 2023.78.20a. Original hang tag.
Gift of CLN Jr

64.



Gold tone Sagittarius pin, 2-1/4" x 1".
2022.78.18. Gift of CLN, Jr.

Animal Collection



65.



Gold tone ram pin, 2-1/2" x 2-1/2", with red and blue beads on collar. Signed Richelieu. 2022.87.08.

66.



Gold tone lion pin, 3" x 3-1/4", with rhinestone accents and hand painted blue enamel. 2022.87.15.

67.



Gold tone zebra pin with red eye and green enamel paint, 2-1/4" dia. Signed Richelieu. 2022.87.16,

68.



Silver tone zebra pin with red eye and hand painted black enamel stripes, 2-1/3" dia. Signed Richelieu 2022.87.02.

69.



Gold tone zebra pin with green eye and rhinestone accents, 2-1/4" dia. Signed Richelieu. 2022.87.09.

Persian Stoneworks Collection



70.



Gold tone choker style necklace, with 3" x 2-1/2" medallion with 27x40mm red cabochon. Signed Bill Smith of Richelieu. 2022.15.04a

71.



Gold tone medallion pendant, 3" x 2-1/2" with 27x40mm red cabochon. Gift of D and J Spiller. Signed Bill Smith of Richelieu. 2022.88.13.

72.



Carnelian cabochon, 27x40mm, set in gold tone pendant. Not original chain. Signed Bill Smith of Richelieu.