

121 X 62

121 X 121

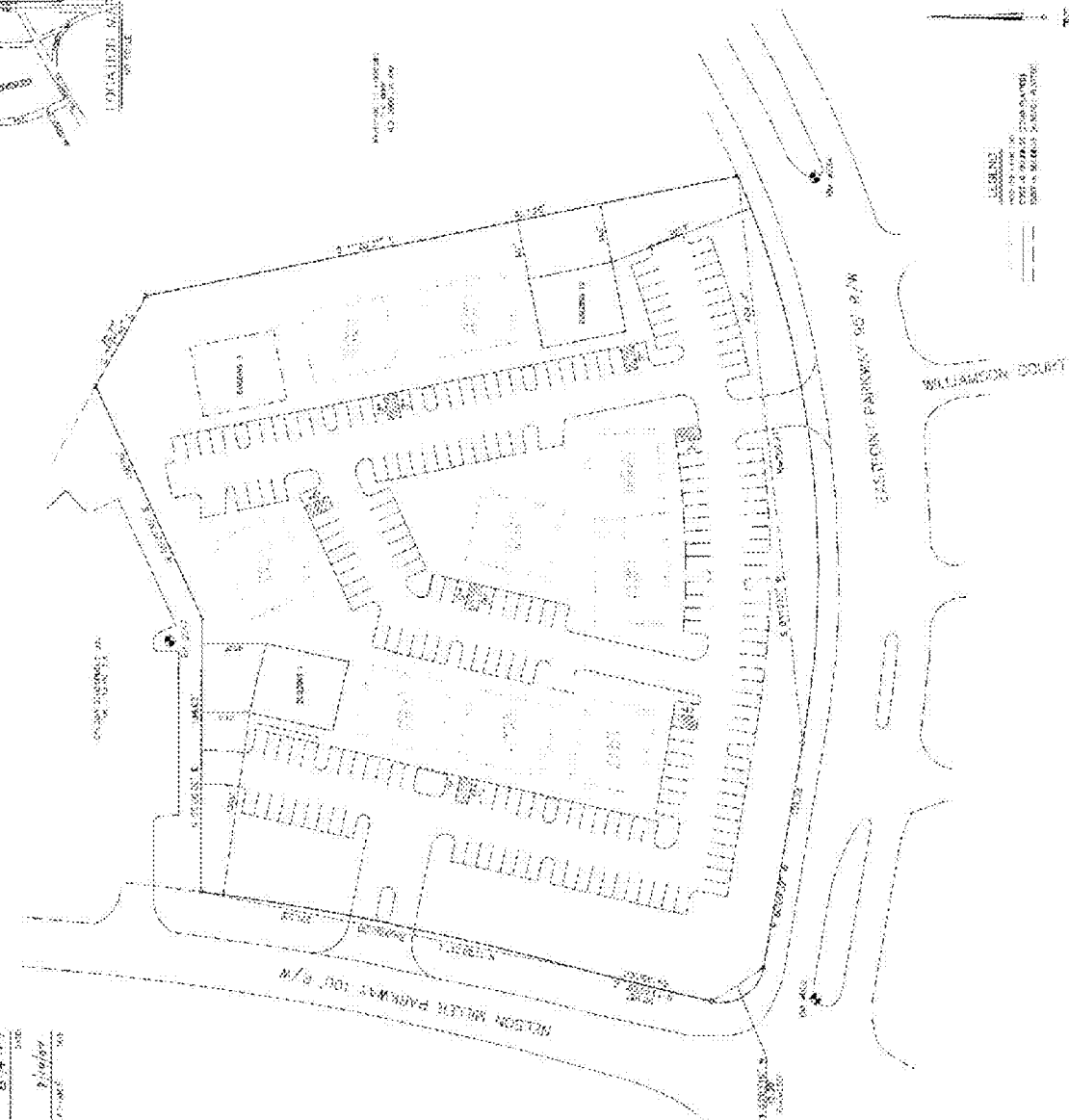
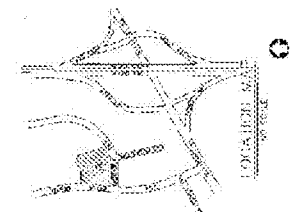
Model, Survey & Associates, Inc.
 10000 W. 10th Street, Suite 100
 Overland Park, Kansas 66211
 (913) 641-1100

ORIGIN
 PRINCE PROPERTIES OF IOWA, INC.
 10000 W. 10th Street, Suite 100
 Overland Park, Kansas 66211
 (913) 641-1100

EASTPOINT LOT 220
 BUILDING UNITS 101, 102, 201 & 202
 601 EASTPOINT PARKWAY
 LEASING # 17

Sheet
 1 of 1

DATE: 08/14/97
 DRAWN BY: [Signature]
 CHECKED BY: [Signature]
 PROJECT: EASTPOINT LOT 220



SURVEYORS CERTIFICATE

I, the undersigned, being a duly licensed and qualified surveyor in the State of Kansas, do hereby certify that the foregoing is a true and correct copy of the original survey as shown to me by the owner of the same, and that the same is a true and correct copy of the original survey as shown to me by the owner of the same.

Surveyed and Plotted: 8/14/97
 Surveyor: [Signature]
 State of Kansas: [Signature]

NOTES:

1. THIS PLAN IS A PART OF THE SURVEY FOR THE EASTPOINT LOT 220, PROJECT NO. 17, AND SHALL BE CONSIDERED AS SUCH.
2. THE SURVEYOR HAS NOT BEEN ADVISED OF ANY ENCUMBRANCES AFFECTING THE PROPERTY.
3. THE SURVEYOR HAS NOT BEEN ADVISED OF ANY UNLAWFUL ENCUMBRANCES AFFECTING THE PROPERTY.
4. THE SURVEYOR HAS NOT BEEN ADVISED OF ANY UNLAWFUL ENCUMBRANCES AFFECTING THE PROPERTY.
5. THE SURVEYOR HAS NOT BEEN ADVISED OF ANY UNLAWFUL ENCUMBRANCES AFFECTING THE PROPERTY.
6. THE SURVEYOR HAS NOT BEEN ADVISED OF ANY UNLAWFUL ENCUMBRANCES AFFECTING THE PROPERTY.

LEGEND

--- PROPERTY LINE
 --- EASEMENT
 --- UNLAWFUL ENCUMBRANCE
 --- UNLAWFUL ENCUMBRANCE

121 X 62

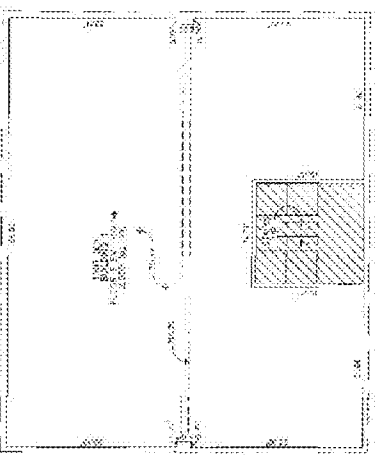
121 X 63

121 X 63

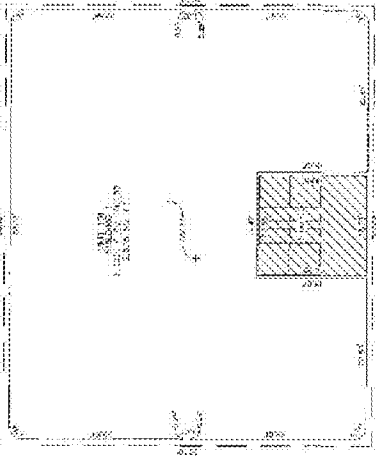
121 X 63

30. SERVICES, SEE NOTES:
 1. ALL WORK SHALL BE IN ACCORDANCE WITH THE LATEST EDITIONS OF THE BUILDING CODES OF THE CITY OF NEW YORK AND THE STATE OF NEW YORK.
 2. ALL MATERIALS SHALL BE OF THE BEST QUALITY AND SHALL BE APPROVED BY THE ENGINEER.
 3. ALL WORK SHALL BE DONE IN ACCORDANCE WITH THE LATEST EDITIONS OF THE BUILDING CODES OF THE CITY OF NEW YORK AND THE STATE OF NEW YORK.
 4. ALL WORK SHALL BE DONE IN ACCORDANCE WITH THE LATEST EDITIONS OF THE BUILDING CODES OF THE CITY OF NEW YORK AND THE STATE OF NEW YORK.

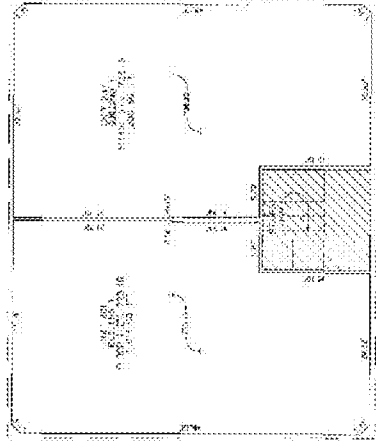
Handwritten notes and signatures



BUILDING 1
 BASEMENT
 (UNFINISHED)



BUILDING 1
 1ST FLOOR



BUILDING 1
 2ND FLOOR

TABLE OF LINES

---	ALL WORK SHALL BE IN ACCORDANCE WITH THE LATEST EDITIONS OF THE BUILDING CODES OF THE CITY OF NEW YORK AND THE STATE OF NEW YORK.
- - - -	ALL MATERIALS SHALL BE OF THE BEST QUALITY AND SHALL BE APPROVED BY THE ENGINEER.
---	ALL WORK SHALL BE DONE IN ACCORDANCE WITH THE LATEST EDITIONS OF THE BUILDING CODES OF THE CITY OF NEW YORK AND THE STATE OF NEW YORK.
---	ALL WORK SHALL BE DONE IN ACCORDANCE WITH THE LATEST EDITIONS OF THE BUILDING CODES OF THE CITY OF NEW YORK AND THE STATE OF NEW YORK.



Model Search & Associates, Inc.
 121 X 63

OWNER:
 PARADISE PROPERTIES
 96 LOUISVILLE, IND.
 P.O. BOX 4088
 LOUISVILLE, KY 40202
 (502) 486-0943

EASTPOINT LOT 220
 BUILDING 1, WEST COULDT, 201 & 202
 3010 BEEK STREET, PACE 759
 1601 EASTPOINT PARKWAY
 LOUISVILLE, KY

DATE: 08/14/13
 DRAWN BY: J. [unclear]
 CHECKED BY: [unclear]
 PROJECT NO.: 13-08-0001

2

SCALE: 1/8" = 1'-0"
 1/4" = 1'-0"
 1/2" = 1'-0"
 3/4" = 1'-0"
 1" = 1'-0"
 1 1/4" = 1'-0"
 1 1/2" = 1'-0"
 1 3/4" = 1'-0"
 2" = 1'-0"
 2 1/4" = 1'-0"
 2 1/2" = 1'-0"
 2 3/4" = 1'-0"
 3" = 1'-0"
 3 1/4" = 1'-0"
 3 1/2" = 1'-0"
 3 3/4" = 1'-0"
 4" = 1'-0"
 4 1/4" = 1'-0"
 4 1/2" = 1'-0"
 4 3/4" = 1'-0"
 5" = 1'-0"
 5 1/4" = 1'-0"
 5 1/2" = 1'-0"
 5 3/4" = 1'-0"
 6" = 1'-0"
 6 1/4" = 1'-0"
 6 1/2" = 1'-0"
 6 3/4" = 1'-0"
 7" = 1'-0"
 7 1/4" = 1'-0"
 7 1/2" = 1'-0"
 7 3/4" = 1'-0"
 8" = 1'-0"
 8 1/4" = 1'-0"
 8 1/2" = 1'-0"
 8 3/4" = 1'-0"
 9" = 1'-0"
 9 1/4" = 1'-0"
 9 1/2" = 1'-0"
 9 3/4" = 1'-0"
 10" = 1'-0"
 10 1/4" = 1'-0"
 10 1/2" = 1'-0"
 10 3/4" = 1'-0"
 11" = 1'-0"
 11 1/4" = 1'-0"
 11 1/2" = 1'-0"
 11 3/4" = 1'-0"
 12" = 1'-0"
 12 1/4" = 1'-0"
 12 1/2" = 1'-0"
 12 3/4" = 1'-0"
 13" = 1'-0"
 13 1/4" = 1'-0"
 13 1/2" = 1'-0"
 13 3/4" = 1'-0"
 14" = 1'-0"
 14 1/4" = 1'-0"
 14 1/2" = 1'-0"
 14 3/4" = 1'-0"
 15" = 1'-0"
 15 1/4" = 1'-0"
 15 1/2" = 1'-0"
 15 3/4" = 1'-0"
 16" = 1'-0"
 16 1/4" = 1'-0"
 16 1/2" = 1'-0"
 16 3/4" = 1'-0"
 17" = 1'-0"
 17 1/4" = 1'-0"
 17 1/2" = 1'-0"
 17 3/4" = 1'-0"
 18" = 1'-0"
 18 1/4" = 1'-0"
 18 1/2" = 1'-0"
 18 3/4" = 1'-0"
 19" = 1'-0"
 19 1/4" = 1'-0"
 19 1/2" = 1'-0"
 19 3/4" = 1'-0"
 20" = 1'-0"
 20 1/4" = 1'-0"
 20 1/2" = 1'-0"
 20 3/4" = 1'-0"
 21" = 1'-0"
 21 1/4" = 1'-0"
 21 1/2" = 1'-0"
 21 3/4" = 1'-0"
 22" = 1'-0"
 22 1/4" = 1'-0"
 22 1/2" = 1'-0"
 22 3/4" = 1'-0"
 23" = 1'-0"
 23 1/4" = 1'-0"
 23 1/2" = 1'-0"
 23 3/4" = 1'-0"
 24" = 1'-0"
 24 1/4" = 1'-0"
 24 1/2" = 1'-0"
 24 3/4" = 1'-0"
 25" = 1'-0"
 25 1/4" = 1'-0"
 25 1/2" = 1'-0"
 25 3/4" = 1'-0"
 26" = 1'-0"
 26 1/4" = 1'-0"
 26 1/2" = 1'-0"
 26 3/4" = 1'-0"
 27" = 1'-0"
 27 1/4" = 1'-0"
 27 1/2" = 1'-0"
 27 3/4" = 1'-0"
 28" = 1'-0"
 28 1/4" = 1'-0"
 28 1/2" = 1'-0"
 28 3/4" = 1'-0"
 29" = 1'-0"
 29 1/4" = 1'-0"
 29 1/2" = 1'-0"
 29 3/4" = 1'-0"
 30" = 1'-0"

121 X 63

