



# Fischer Technical Company

## 2023 Lab Supplies Product Catalog



- > Wholesale Laboratory Products
- > Serving the industry since 1989
- > Scan the QR Code to visit our website





# Meet our Staff



## **Helmut Fischer (1941-2017) - Founder**

Helmut founded Fischer Technical Company in 1989. Helmut came to the United States from Germany and joined the US Army. After a lengthy and successful career in the High Vacuum industry, Helmut started the company in 1989 as a manufacturer's representative agency. He began importing products from Germany as well as stocking domestically manufactured products for the

## **Mary Fischer—Owner/CEO**



## **John Gura - Managing Director of Sales**

John joined Fischer Technical Company in 2001. Contact John for digital images, pricing or technical questions about any of our products. John is available for sales training for your team. Email him at [sales@fischertech.com](mailto:sales@fischertech.com)



## **Jeff Fischer - Chief Operating Officer**

Jeff handles all of the shipping, receiving, and billing for Fischer Technical Company. Jeff is also an expert on high vacuum. Contact him and send Purchase Orders to [orders@fischertech.com](mailto:orders@fischertech.com)



## **Karen Gura - Customer Service Specialist**

Karen helps Jeff run the office and is a certified Illinois teacher



## **Mike Quigley - Inside Sales Specialist**

Mike joined Fischer Technical Company in 2020. Contact Mike for sales related questions as well as product information and sales strategies. Contact Mike at [mquigley@fischertech.com](mailto:mquigley@fischertech.com)

# Fischer Technical Company

---



## Table of Contents

High Vacuum Pumps	4-8
High Vacuum Oil	9
High Vacuum Repair Parts	9-11
High Vacuum Tubing	12
High Vacuum Gauges	13
High Vacuum Accessories	14
Vacuum Pump Plates	15
Glass Bell Jars	16
Drying/Draining Rack	16
Diaphragm Vacuum Pumps	17-19
Diaphragm Vacuum Pump Accessories/Repair Parts	19-20
Laboratory Safety Mats	21
Spatulas, Glass Cleaners, Aspirator Bulbs	22
Safety Pipette Fillers	23-26
Mini Pipettors	27
Pipette Tips	28
Manufacturers and Industries We Represent	29-30
Ordering/Merchandizing Information	31-32



# High Vacuum Pumps



**Our reliable, rotary vane type, low cost two-stage high vacuum pumps operate quietly. Pumps are available ranging from the popular 3 cubic feet per minute (85 liters per minute) up to 10 cubic feet per minute (285 liters per minute). All pumps are available in both 110v or 220v. Available with or without a 0-30" bourdon tube type vacuum gauge)**

## Specifications:

Ultimate Vacuum	25 Micron/Laboratory Conditions
Pump Speed	1725 RPM
Motor	110V, 60Hz, 1/2HP or Dual Voltage, Dual Cycle 110V,/220V , 50/60Hz, Please note the Dual Voltage pumps come equipped with both US cords that plug into the back of the motor as well as a switch to switch between voltages.
Oil Capacity	26oz for the 3 and 5CFM pumps and 21oz for the 7 and 10CF pumps
Operating Temperature	30°F to 170°F
Intake Port	3/8" OD for 3/8" ID tubing on LAV-3, LAV-5. 1/2" OD. On LAV-7, LAV-10
Dimensions	11"H x 14" L x 5.25" W (27.5cm x 35cm x 12.5cm)

# HIGH VACUUM PUMPS



## 3CFM High Vacuum Pump, 110V

These rotary style, 2 stage direct drive pumps are ideal for a vacuum of up to 25 microns. The pumps use High Vacuum pump oil (one quart included) and are designed to run on a closed system. The vacuum should not be regulated, but rather these pumps should be used with vacuum ovens, desiccators, etc. where a consistent, high vacuum is required.

High Vacuum Pump: 3cfm, 110V, 60Hz, 1/2HP

**ITEM NUMBER** LAV-3

**SHIPPING WEIGHT** 30 LBS



## 3CFM High Vacuum Pump, 110/220V

Rotary Vane High Vacuum Pump: 3cfm, Dual Voltage, Dual Cycle 110V,/220V , 50/60Hz, 1/2HP Comes equipped with both US110V and US220V cords and plug into the back of the motor. There is also a switch on the motor to easily switch between voltages.

**ITEM NUMBER** LAV-3/220

**SHIPPING WEIGHT** 30 LBS



## 3CFM High Vacuum Pump, 110V w/ 0-30" Vacuum Gauge

These rotary style, 2 stage direct drive pumps are ideal for a vacuum of up to 25 microns. The pumps use High Vacuum pump oil (one quart included) and are designed to run on a closed system. The vacuum should not be regulated, but rather these pumps should be used with vacuum ovens, desiccators, etc. where a consistent, high vacuum is required.

High Vacuum Pump: 3cfm, 110V, 60Hz with 0-30" Bourdon Tube Type Gauge, 1/2HP

**ITEM NUMBER** LAV-3/G

**SHIPPING WEIGHT** 30 LBS



## 3CFM High Vacuum Pump, 110/220V w/ 0-30" Vacuum Gauge

High Vacuum Pump: 3cfm, Dual Voltage, Dual Cycle 110V,/220V , 50/60Hz, with 0-30" Bourdon Tube Type Gauge, 1/2HP Comes equipped with both US110V and US220V cords and plug into the back of the motor. There is also a switch on the motor to easily switch between voltages.

**ITEM NUMBER** LAV-3/G-220

**SHIPPING WEIGHT** 30 LBS

# HIGH VACUUM PUMPS



## 5CFM High Vacuum Pump, 110V

These rotary style, 2 stage direct drive pumps are ideal for a vacuum of up to 25 microns. The pumps use High Vacuum pump oil (one quart included) and are designed to run on a closed system. The vacuum should not be regulated, but rather these pumps should be used with vacuum ovens, desiccators, etc. where a consistent, high vacuum is required.

High Vacuum Pump: 5cfm, 110V, 60Hz, 1/2HP

**ITEM NUMBER** LAV-5

**SHIPPING WEIGHT** 31 LBS

---

## 5CFM High Vacuum Pump, 110/220V



Rotary Vane High Vacuum Pump: 5cfm, 110V/220V, 60Hz/50Hz, Comes equipped with both US110V and US220V cords and plug into the back of the motor. There is also a switch on the motor to easily switch between voltages.

**ITEM NUMBER** LAV-5/220

**SHIPPING WEIGHT** 31 LBS

---

## 5CFM High Vacuum Pump, 110V w/ 0-30" Vacuum Gauge



These rotary style, 2 stage direct drive pumps are ideal for a vacuum of up to 25 microns. The pumps use High Vacuum pump oil (one quart included) and are designed to run on a closed system.

High Vacuum Pump: 5cfm, 110V, 60Hz with 0-30" Bourdon Tube Type Gauge, 1/2HP

**ITEM NUMBER** LAV-5/G

**SHIPPING WEIGHT** 32 LBS

---

## 5CFM High Vacuum Pump, 110/220V w/ 0-30" Vacuum Gauge



Rotary Vane High Vacuum Pump: 5cfm, 110V/220V, 60Hz/50Hz, with 0-30" Bourdon Tube Type Gauge, 1/2HP Comes equipped with both US110V and US220V cords and plug into the back of the motor. There is also a switch on the motor to easily switch between voltages.

**ITEM NUMBER** LAV-5/G/220

**SHIPPING WEIGHT** 32 LBS

# HIGH VACUUM PUMPS



## 7CFM High Vacuum Pump, 110V

These rotary style, 2 stage direct drive pumps are ideal for a vacuum of up to 25 microns. The pumps use High Vacuum pump oil (one quart included) and are designed to run on a closed system. The vacuum should not be regulated, but rather these pumps should be used with vacuum ovens, desiccators, etc. where a consistent, high vacuum is required.

High Vacuum Pump: 7cfm, 110V, 60Hz, 1/2HP

**ITEM NUMBER** LAV-7

**SHIPPING WEIGHT** 32 LBS



## 7CFM High Vacuum Pump, 110/220V

Rotary Vane High Vacuum Pump: 7cfm, 110V/220V, 60Hz/50Hz, Comes equipped with both US110V and US220V cords and plug into the back of the motor. There is also a switch on the motor to easily switch between voltages.

**ITEM NUMBER** LAV-7/220

**SHIPPING WEIGHT** 32 LBS



## 7CFM High Vacuum Pump, 110V w/ 0-30" Vacuum Gauge

These rotary style, 2 stage direct drive pumps are ideal for a vacuum of up to 25 microns. The pumps use High Vacuum pump oil (one quart included) and are designed to run on a closed system.

High Vacuum Pump: 7cfm, 110V, 60Hz with 0-30" Bourdon Tube Type Gauge, 1/2HP

**ITEM NUMBER** LAV-7/G

**SHIPPING WEIGHT** 32 LBS



## 7CFM High Vacuum Pump, 110/220V w/ 0-30" Vacuum Gauge

Rotary Vane High Vacuum Pump: 7cfm, 110V/220V, 60Hz/50Hz, comes with 0-30" Bourdon Tube Type Gauge, 1/2HP Comes equipped with both US110V and US220V cords and plug into the back of the motor. There is also a switch on the motor to easily switch between voltages.

**ITEM NUMBER** LAV-7/G/220

**SHIPPING WEIGHT** 32 LBS

# HIGH VACUUM PUMPS



## 10CFM High Vacuum Pump, 110V

These rotary style, 2 stage direct drive pumps are ideal for a vacuum of up to 25 microns. The pumps use High Vacuum pump oil (one quart included) and are designed to run on a closed system. The vacuum should not be regulated, but rather these pumps should be used with vacuum ovens, desiccators, etc. where a consistent, high vacuum is required.

High Vacuum Pump: 10cfm, 110V, 60Hz, 1/2HP

**ITEM NUMBER** LAV-10

**SHIPPING WEIGHT** 36 LBS

---

## 10CFM High Vacuum Pump, 110/220V

Rotary Vane High Vacuum Pump: 10cfm, 110V/220V, 60Hz/50Hz, Comes equipped with both US110V and US220V cords and plug into the back of the motor. There is also a switch on the motor to easily switch between voltages.

**ITEM NUMBER** LAV-10/220

**SHIPPING WEIGHT** 36 LBS



---

## 10CFM High Vacuum Pump, 110V w/ 0-30" Vacuum Gauge

These rotary style, 2 stage direct drive pumps are ideal for a vacuum of up to 25 microns. The pumps use High Vacuum pump oil (one quart included) and are designed to run on a closed system.

High Vacuum Pump: 10cfm, 110V, 60Hz with 0-30" Bourdon Tube Type Gauge, 1/2HP

**ITEM NUMBER** LAV-10/G

**SHIPPING WEIGHT** 32 LBS



---

## 10CFM High Vacuum Pump, 110/220V w/ 0-30" Vacuum Gauge

Rotary Vane High Vacuum Pump, 10cfm, 110V/220V, 60Hz/50Hz, comes with 0-30" Bourdon Tube Type Gauge, 1/2HP Comes equipped with both US110V and US220V cords and plug into the back of the motor. There is also a switch on the motor to easily switch between voltages.

**ITEM NUMBER** LAV-10/G/220

**SHIPPING WEIGHT** 32 LBS





# HIGH VACUUM ACCESSORIES



## The Tank

All vacuum pumps require changing oil after every use. Contaminated oil, laden with moisture and acid will damage pumps and shorten pump life. Maintaining clean oil in your pump will ensure that your pump will operate at peak efficiency.

The Tank is Easy to Use: Turn black cap counterclockwise to open. Place vacuum pump in the cradle and drain pump. Once the pump has finished draining, turn the black cap clockwise to close after every use. Holds up to 5 oil changes

**ITEM NUMBER** LAV-TANK

**SHIPPING WEIGHT** 2 LBS



## High Vacuum Pump Oil

1 Quart of High Vacuum Pump Oil, Sold in packs of 2 quarts or a case of 12 quarts

Our High Vacuum Pump Oil is designed and necessary to achieve vacuum pressures in the micron range (25 micron) on an oil filled pump.

- High Viscosity Mineral Oil
- Non Detergent

**ITEM NUMBER** OIL-PK AND OIL-012

**SHIPPING WEIGHT** 4 LBS/ 24 LBS

## Flexible Coupler

Replacement Flexible Coupler for Fischer Technical LAV Series pumps.

Contact us at [orders@fischertech.com](mailto:orders@fischertech.com) before purchasing this item.



**ITEM NUMBER** PR-208

**SHIPPING WEIGHT** 0.5 LBS



## Vacuum Repair Kit

This repair kit includes all the essential items which may require replacement when performing a general maintenance on the LAV series high vacuum pumps.

The kit includes: 1ea. PR-3 (Shaft Seal), 1ea. PR-311 (Cover Seal), 1ea. PR-208 (Flexible Coupler), 1ea. PR-18 (Cartridge Valve), 2ea. OIL-001 (Quart of OIL) and a maintenance and care guide.

**ITEM NUMBER** LAV-REPAIRKIT

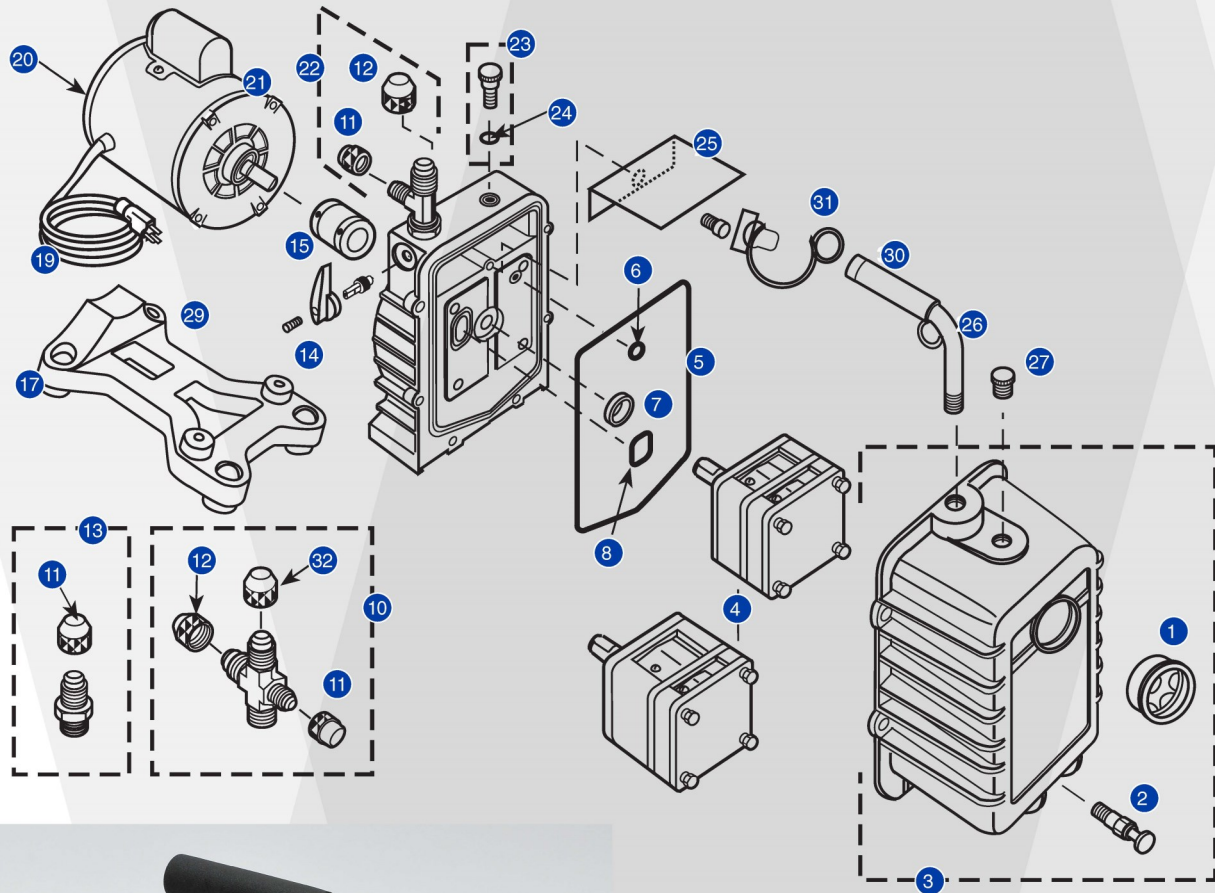
**SHIPPING WEIGHT** 4 LBS



# REPAIR PARTS

## VACUUM PUMP REPAIR

## LAV-3 THROUGH LAV-10 PLATINUM® SERIES



### PLEASE INCLUDE WITH ORDERS

1. Model number
2. Four digit serial number
3. Part number and description

# REPAIR PARTS

## VACUUM PUMP REPAIR

## LAV-3 THROUGH LAV-10 PLATINUM® SERIES

PLATINUM® PUMP REPAIR PARTS – ALL PUMPS		
REF.NO.	PART NO.	DESCRIPTION
1	PR-1	Sight glass
2	PR-2	Drain valve
6	PR-211	Trap o-ring, gas ballast
7	PR-3	Shaft seal
8	PR-315	Trap o-ring, intake
9	PR-4	Rubber foot and screw assembly (1 per package)
10	PR-76	Intake caps w/cross
11	NFT5-4	1/4" O-ring, intake
12	NFT5-6	3/8" O-ring cap
12	NFT5-8	1/2" O-ring cap
14	PR-209	Plastic isolation valve handle and screw w/stem, O-rings and retainer (not interchangeable w/PR-210)
15	PR-208	Flexible coupler
15	PR-308	Flexible section only
15	PR-6	Flexible coupler
15	PR-77	Flexible section only
16	PR-42	Motor foot w/screw
17	PR-59	Base Foot
19	PR-31	Line cord (Emerson motor)
19	PR-58	Line cord (Marathon motor)
20	PR-54	Rocker switch w/wire leads (Emerson)
21	PR-206	1/2 Hp, 115v, 60 Hz Motor w/line cord and switch
21	PR-207	1/2 Hp, 115/230v, 50/60 Hz Motor w/ line cord and switch
22	PR-5	Intake tee w/caps
23	PR-7	Gas ballast valve w/o-ring
24	P90009	O-ring, gas ballast valve
25	PR-40	Splash guard and screw (excludes LAV-3 manufactured before Jan 2001 use PR-39)
26	PR-75	Cushioned handle w/lift ring 1/2" NPT and DV-EP-8 as of 2008
26	PR-205	Cushioned handle 3/8" NPT
27	PR-22	Oil fill plug w/o-ring
28	PR-56	Adapter nut w/nut o-ring
30	PR-500	Cushion and cap 3/8" NPT
30	PR-501	Cushion and cap 1/2" NPT
31	DV-EP6	Tethered safety cap 3/8"
31	DV-EP8	Tethered safety cap 1/2"
32	NFT5-8	1/2" Cap w/o-ring

PLATINUM® PUMP REPAIR PARTS – MANUFACTURED AFTER JANUARY 2001		
3	PR-300	LAV-3 through LAV-7 cover assembly w/ sight glass and drain valve
3	PR-301	LAV-10 Cover assembly w/sight glass and drain valve
4	PR-302	LAV-3 Cartridge w/o-rings and cover seal
4	PR-303	LAV-5 Cartridge w/o-rings and cover seal
4	PR-304	LAV-7 Cartridge w/o-rings and cover seal
4	PR-314	LAV-10 Cartridge w/o-rings and cover seal
13	PR-32	1/4" Intake w/cap
5	PR-311	Cover seal
20	PR-35	Rocker switch w/prongs (Marathon 1101-0105)
29	PR-62	Pump base (includes feet)
PLATINUM® PUMP REPAIR PARTS – MANUFACTURED BEFORE JANUARY 2001		
3	PR-200	No longer available; can substitute PR-201
3	PR-201	LAV-5 and LAV-7 Cover assembly w/ sight glass and drain valve
5	PR-217	Cover seal
8	PR-215	Trap o-ring, intake
14	PR-210	Metal isolation valve handle and screw
NOT SHOWN		
PR-18	Cartridge valve repair kit (includes LAV-10 as of 2007 models)	
PR-52	LAV-10 Cartridge valve repair kit prior to 2007 models	
PR-45	PR-1, PR-2, PR-4(2), PR-42, PR-208	
PR-62	Fits all pumps with serial #0101 and higher	

# VACUUM TUBING AND ACCESSORIES



## 5' High Vacuum Tubing with Hose Clamps

High Vacuum Pump Tubing, PVC with Reinforced Webbing, 5FT. And 2 ea. Hose Clamps  
Has an id of 1/2 inch and can withstand 25 microns of pressure

**ITEM NUMBER** HVG-TUBING/SET

**SHIPPING WEIGHT** 1 LB



## 50M High Vacuum Tubing

High Vacuum Pump Tubing, PVC with Reinforced Webbing, 164 FT. (50M)  
Has an id of 1/2 inch and can withstand 25 microns of pressure

**ITEM NUMBER** HVG-TUBING/ROLL

**SHIPPING WEIGHT** 33 LBS



## Hose Clamp

Hose Clamps, MIN 5/16" MAX 7/8"

**ITEM NUMBER** HVG-CLAMP

**SHIPPING WEIGHT** 0.04 LB



# HIGH VACUUM GAUGES



## Digital High Vacuum Gauge with Inline Connections

Digital High Vacuum Gauge: Digital display with solid state circuitry, +32 Degree F to 120 Degree F ambient temperature, 10 min automatic shutoff batter saver, saves last vacuum readout after shutdown, 300 PSI maximum pressure, vacuum range 10-12000 Micron.

**ITEM NUMBER** HVG-001

**SHIPPING WEIGHT** 0.7 LB

---



## 0-30" Vacuum Gauge with Inline Connection

Inline 0-30" HG Bourdon tube type vacuum gauge with two 3/8" hose barbs.

**ITEM NUMBER** HVG-002

**SHIPPING WEIGHT** 0.6 LB

---



## 0-30" Vacuum Gauge with Mounting Kit

This kit comes complete with all of the fittings necessary to add a mounted gauge to your LAV Series High Vacuum Pump. Includes a vacuum gauge and fitting sealant.

**ITEM NUMBER** HVG-003

**SHIPPING WEIGHT** 0.6 LB

---



## 2" Vacuum Gauge with bottom connection

This Bourdon Tube Gauge is approximately 2" and features 0-30" inches of mercury dial. Includes a 1/4" brass thread on the bottom. This affordable gauge is compatible with a wide assortment of vacuum pumps.

**ITEM NUMBER** HVG-004

**SHIPPING WEIGHT** 0.5 LB

# HIGH VACUUM ACCESORIES



## Inline Air Filter

The inline air filter features 24 square inches of filter media which remains strong up to 10cfm air flow. Removes particles as small as 5 microns. For use with 1/2" diameter vacuum tubing

**ITEM NUMBER** LAV-INLINEFILTER

**SHIPPING WEIGHT** 1 LB



## Vacuum Exhaust Filter

High Vacuum Exhaust Filter to be used with the LAV Series High Vacuum Pumps

Reduces the amount of smoke coming out of the exhaust (Handle) of the vacuum pump by filtering the oil mist. The also reduces the noise level

**ITEM NUMBER** LAV-EF

**SHIPPING WEIGHT** 0.4 LB



## High Vacuum Grease

4 Ounce Jar of Silicone High Vacuum Grease

Provides a perfect seal between the vacuum pump plate and bell jar so that high vacuum pressures can be achieved.

**ITEM NUMBER** LAV-GREASE

**SHIPPING WEIGHT** 0.6 LB



## Shut Off and Bleeder Three Way Valve

Our three-way brass ball valve with T-full port and 3ea. 3/8" Hose barb connections will hold a vacuum in your system, isolate the vacuum pump to prevent oil backup, and release/bleed air back into your system all in one. An external vacuum gauge can be connected to the third valve to take a system vacuum reading isolated from the vacuum pump.

**ITEM NUMBER** LAV-3WAYVALVE

**SHIPPING WEIGHT** 2 LBS

# HIGH VACUUM PUMP PLATES



## Cast Iron High Vacuum Pump Plate



High Vacuum pump plate, Cast Iron, with Rubber Gasket, accommodates Bell Jars up to 8 1/2" DIA. equipped with shut off valve and bleeder valve

**ITEM NUMBER** GA-001

**SHIPPING WEIGHT** 16 LBS

---

## Rubber Gasket with Center Hole



Replacement Rubber Gasket for the Cast Iron High Vacuum Pump Plate #GA-001

**ITEM NUMBER** GA-RUBGAS

**SHIPPING WEIGHT** 0.3 LB

---

## Acrylic High Vacuum Pump Plate



High Vacuum pump plate, Acrylic, with Rubber Gasket, accommodates Bell Jars up to 8 1/2" DIA. equipped with shut off valve

**ITEM NUMBER** AP-001

**SHIPPING WEIGHT** 5 LBS

---

## Rubber Gasket with Off Set Hole



Rubber Gasket for Acrylic High Vacuum Pump Plate #AP-001

**ITEM NUMBER** AP-RUBGAS

**SHIPPING WEIGHT** 0.3 LB

# BELL JARS AND DRYING RACK



## 5"IDx9"H Bell Jar with Closed Top With Knob

High quality glass bell jars with a glass knob at the top. Ground flange to allow an excellent seal to vacuum pump plates. Safe at high pressures.

**ITEM NUMBER** BJAR-1

**SHIPPING WEIGHT** 6 LBS

---



## 6"IDx11"H Bell Jar with Closed Top With Knob

High quality glass bell jars with a glass knob at the top. Ground flange to allow an excellent seal to vacuum pump plates. Safe at high pressures.

**ITEM NUMBER** BJAR-2

**SHIPPING WEIGHT** 14 LBS

---



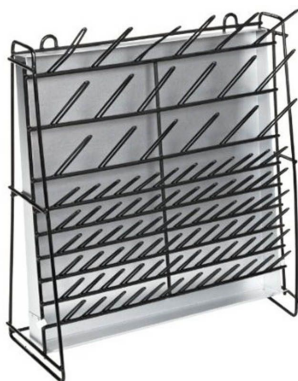
## 8 1/2"IDx 15"H Bell Jar with Closed Top With Knob

High quality glass bell jars with a glass knob at the top. Ground flange to allow an excellent seal to vacuum pump plates. Safe at high pressures.

**ITEM NUMBER** BJAR-3

**SHIPPING WEIGHT** 27 LBS

---



**Draining and Drying Rack** This Drying Rack has 72 8cm pins and 18 13cm pins to hold all types of test tubes, beakers and flasks. The vinyl coating prevents chipping and is resistant to most chemicals and oils. The frame and pins are made of tough extruded steel wire, electrically spot welded for extra strength. A heavy-Gauge, Rustproof metal drainage pan covers the entire back. Holds 90 pieces of glassware. 47cm x 18cm x 48cm

**ITEM NUMBER** 901807BK

**SHIPPING WEIGHT** 10 LBS





# Chemical Resistant Diaphragm Pumps



The **TLD3000** economical chemical-resistant diaphragm vacuum pump is constructed from quality parts, manufactured in the USA and offered at an affordable price. This Laboratory Vacuum pump is library-quiet; the noise level is only ~ 54 dB small, durable, and chemical resistant! The **TLD3000** is nearly maintenance-free because of the PTFE coated surfaces, PTFE membrane, stainless steel valves and oil-free design. The pump features a vacuum regulator with gauge to adjust and monitor vacuum level. The **TLD3000** is a 20 psi continuous duty pump.

Item Number	TLD3000
Air Flow Rate	0.7 CFM
Maximum Vacuum	22" Hg
Motor	1/7 HP
Usage Hours	15,000
Ultimate Pressure	190 Torr
Shipping Weight	12 lbs
Hose Barb	1/4" O.D.



# Chemical Resistant Diaphragm Pumps



The **TLD5000** (115V) and **TLD000C-02** (230V) Chemical Resistant Diaphragm Vacuum Pumps are durable and chemical resistant. All contact surfaces are PTFE coated. Both include an inlet trap and vacuum regulator, and are a perfect choice for vacuum filtration, desiccation, and other mid range vacuum applications. The **TLD5000** and **TLD5000C-02** are resistant to bleach and acetone vapors allowing them to be used with cell culture decontamination protocols. The **TLD5000** and **TLD5000C-02** are a 20 psi continuous duty pump.

Item Number	TLD5000 (110V) TLD5000C-02 (220V)
Air Flow Rate	1.3 CFM
Maximum Vacuum	24" Hg
Motor	1/5 HP
Usage Hours	15,000
Ultimate Pressure	150 Torr
Shipping Weight	17 lbs
Hose Barb	1/4" O.D.

# DIAPHRAGM PUMP ACCESSORIES



PILOT Service Kit - Diaphragm Replacement Parts TLD3000 - Includes Diaphragm Hold Down Plate, O-Ring Gasket Head & Pump Head Assembly. (Parts for Pump Shown in Photo)



**ITEM NUMBER** TLD3000K-01

**SHIPPING WEIGHT** 1 LB

---

PILOT Service Kit - Major Rebuild Parts TLD3000 - Includes Diaphragm Buna N, Diaphragm Liner PTFE, Diaphragm Hold Down Plate, Valve Plate Assembly, O-Ring Gasket Head, Pump Head Assembly, Head Screws & Rubber Suction Cup Feet.



**ITEM NUMBER** TLD3000K-03

**SHIPPING WEIGHT** 2 LBS

---

PILOT Service Kit - Rubber Suction Cup Feet - compatible with PILOT3000 & PILOT5000



**ITEM NUMBER** TLD2500K-04

**SHIPPING WEIGHT** 1 LB

---

Regulator Kit Includes: Dial Pressure gauge, Hand Knob Control, 1/4" O.D. Hose barb, 1/8" NPT Exhaust Adapter, Built in Silencer. Compatible with PILOT3000 and PILOT5000 Chemical Resistant Diaphragm Vacuum Pumps.



**ITEM NUMBER** TLD3500K-05

**SHIPPING WEIGHT** 4 LBS

# DIAPHRAGM PUMP ACCESSORIES



PILOT Service Kit - Rubber Suction Cup Feet - compatible with PILOT3000 & PILOT5000



**ITEM NUMBER** TLD3500K-06

**SHIPPING WEIGHT** 4 LBS

---

PILOT Service Kit - Diaphragm Replacement Parts TLD5000 - Includes Diaphragm Buna N, Diaphragm Liner PTFE, O-Ring Gasket Head & Diaphragm Hold Down Screws.



**ITEM NUMBER** TLD5000K-01

**SHIPPING WEIGHT** 1 LB

---

PILOT Service Kit - Major Rebuild Parts TLD5000 - Includes Diaphragm Buna N, Diaphragm Liner PTFE, Diaphragm Hold Down Plate, Valve Plate Assembly, O-Ring Gasket Head, Pump Head Assembly, Head Screws, Handle Screws, Diaphragm Hold Down Screws & Hose Barb PVDF 1/8" x 1/4" ID Hose.



**ITEM NUMBER** TLD5000K-03

**SHIPPING WEIGHT** 2 LBS

---

Vacuum regulator assembly for the TLD5000



**ITEM NUMBER** TLD2500K-05

**SHIPPING WEIGHT** 4 LBS

# LABORATORY SAFETY MATS



## Red Silicone Laboratory Safety Mat

Laboratory Safety Mat Silicone Red, 250MM x 250MM

Helps prevent spills in the laboratory



**ITEM NUMBER** LABMATRED

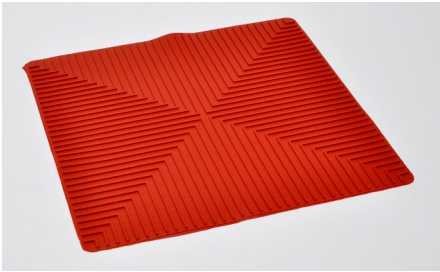
**SHIPPING WEIGHT** 0.3 LB

---

## Large Size Red Silicone Laboratory Safety Mat

Laboratory Safety Mat Silicone Red 350MM x 350MM

Helps prevent spills in the laboratory



**ITEM NUMBER** LABMATRED-L

**SHIPPING WEIGHT** 0.7 LB

---

## Black Silicone Laboratory Safety Mat

Laboratory Safety Mat Silicone Black, 250MM x 250MM

Helps prevent spills in the laboratory



**ITEM NUMBER** LABMATBLK

**SHIPPING WEIGHT** 0.3 LB

---

## Large Size Black Silicone Laboratory Safety Mat

Laboratory Safety Mat Silicone Black, 350MM x 350MM

Helps prevent spills in the laboratory



**ITEM NUMBER** LABMATBLK-L

**SHIPPING WEIGHT** 0.7 LB

# GENERAL LAB SUPPLIES



## Transparent Silicone Spatula

Attaches to a stirring rod and is used as a soft style spatula with excellent chemical resistance. Available in both natural rubber and chemically resistant silicone. Opening is 5mm for a stirring rod. Silicone. Sold individually or in packs of 6ea.



**ITEM NUMBER** SILSPAT-S  
SILSPAT-S-PK/6  
**SHIPPING WEIGHT** 0.5 LB

---

## Red Natural Rubber Spatulas

Attaches to a stirring rod and is used as a soft style spatula with excellent chemical resistance. Available in both natural rubber and chemically resistant silicone. Opening is 5mm for a stirring rod. Natural Rubber. Sold individually or in packs of 6ea.



**ITEM NUMBER** SILSPAT-R  
SILSPAT-R-PK/6  
**SHIPPING WEIGHT** 0.5 LB

---

## Glass Cleaner

These flexible round bottom glass cleaners are ideal for use with a stirring rod (5MM opening to attach a stirring rod) to clean the bottom of narrow glassware such as test tubes and cylinders.



**ITEM NUMBER** GLSCLN  
**SHIPPING WEIGHT** 0.1 LB

---

## Vacuum Pressure Bulb

Our PVC deluxe vacuum pressure bulb is ideal for gas aspirating duties, bulb is made from natural rubber. Our PVC deluxe vacuum pressure bulb is ideal for gas aspirating duties, bulb is made from natural rubber. The Red Valves are interchangeable and can be used as both a pressure and vacuum valve. 111mm length, 57mm diameter.



**ITEM NUMBER** VPBULB  
**SHIPPING WEIGHT** 0.5 LB

# PIPETTE FILLERS



Pipette fillers eliminate the need for dangerous mouth pipetting



## Red Standard three Valve Natural Rubber Pipette Filler

50ML Three Valve Safety Pipette Filler, Red, Natural Rubber, Usable up to 100ML, 1/4" diameter opening fits all standard pipets  
Imported from Germany

**ITEM NUMBER** RED-001

**SHIPPING WEIGHT** 0.1 LB

---



## Black Standard three Valve Natural Rubber Pipette Filler

50ML Three Valve Safety Pipette Filler, Black, Natural Rubber, Usable up to 100ML, 1/4" diameter opening fits all standard pipets  
Imported from Germany

**ITEM NUMBER** BLK-001

**SHIPPING WEIGHT** 0.1 LB

---



## Blue Standard three Valve Natural Rubber Pipette Filler

50ML Three Valve Safety Pipette Filler, Blue, Natural Rubber, Usable up to 100ML, 1/4" diameter opening fits all standard pipets  
Imported from Germany

**ITEM NUMBER** BLU-001

**SHIPPING WEIGHT** 0.1 LB

---



## Green Standard three Valve Natural Rubber Pipette Filler

50ML Three Valve Safety Pipette Filler, Green, Natural Rubber, Usable up to 100ML, 1/4" diameter opening fits all standard pipets  
Imported from Germany

**ITEM NUMBER** GRN-001

**SHIPPING WEIGHT** 0.1 LB

# PIPETTE FILLERS



Pipette fillers eliminate the need for dangerous mouth pipetting



## Multicolored "TIE-DYE" Standard three Valve Natural Rubber Pipette Filler

50ML Three Valve Safety Pipette Filler, Tie-Dye, Natural Rubber, Usable up to 100ML, 1/4" diameter opening fits all standard pipets

**ITEM NUMBER** MULTIPIP

**SHIPPING WEIGHT** 0.1 LB



## Red Standard three Valve Silicone Rubber Pipette Filler

50ML Three Valve Safety Pipette Filler, Red, Silicone Rubber, Usable up to 100ML, 1/4" diameter opening fits all standard pipets

\*Silicone Rubber is more chemical resilient than the Natural Rubber  
Imported from Germany

**ITEM NUMBER** SILRED-001

**SHIPPING WEIGHT** 0.1 LB



## Black Standard three Valve Silicone Rubber Pipette Filler

50ML Three Valve Safety Pipette Filler, Black, Silicone Rubber, Usable up to 100ML, 1/4" diameter opening fits all standard pipets

\*Silicone Rubber is more chemical resilient than the Natural Rubber  
Imported from Germany

**ITEM NUMBER** SILBLK-001

**SHIPPING WEIGHT** 0.1 LB



## Standard three Valve Natural Rubber Pipette Filler Kit

Includes one each of Red, Black, Green, and Blue natural rubber three valve pipette filler for use with pipettes up to 100ml, 1/4" diameter opening fits all standard pipets  
Imported from Germany

**ITEM NUMBER** PFKIT5

**SHIPPING WEIGHT** 1 LB



# PIPETTE FILLERS



Pipette fillers eliminate the need for dangerous mouth pipetting



## Red "Flip Style" Natural Rubber Pipette Filler

50 ML Two Valve Safety "Flip Style" Pipette Filler, Red, Natural Rubber, Usable up to 100 ML, 1/4" diameter opening fits all standard pipets  
The "Flip Style" Pipette Fillers are usable with one hand and are easier to clean the insides  
Imported from Germany

**ITEM NUMBER** FLIP-001

**SHIPPING WEIGHT** 0.1 LB

---

## Black "Flip Style" Natural Rubber Pipette Filler



50 ML Two Valve Safety "Flip Style" Pipette Filler, Black, Natural Rubber, Usable up to 100 ML, 1/4" diameter opening fits all standard pipets  
The "Flip Style" Pipette Fillers are usable with one hand and are easier to clean the insides  
Imported from Germany

**ITEM NUMBER** FLIP-002

**SHIPPING WEIGHT** 0.1 LB

---

## Blue "Flip Style" Natural Rubber Pipette Filler



50 ML Two Valve Safety "Flip Style" Pipette Filler, Blue, Natural Rubber, Usable up to 100 ML, 1/4" diameter opening fits all standard pipets  
The "Flip Style" Pipette Fillers are usable with one hand and are easier to clean the insides  
Imported from Germany

**ITEM NUMBER** FLIP-003

**SHIPPING WEIGHT** 0.1 LB

---

## Green "Flip Style" Natural Rubber Pipette Filler



50 ML Two Valve Safety "Flip Style" Pipette Filler, Green, Natural Rubber, Usable up to 100 ML, 1/4" diameter opening fits all standard pipets  
The "Flip Style" Pipette Fillers are usable with one hand and are easier to clean the insides  
Imported from Germany

**ITEM NUMBER** FLIP-004

**SHIPPING WEIGHT** 0.1 LB

# PIPETTE FILLERS



Pipette fillers eliminate the need for dangerous mouth pipetting



## Yellow "Flip Style" Natural Rubber Pipette Filler

50 ML Two Valve Safety "Flip Style" Pipette Filler, Yellow, Natural Rubber, Usable up to 100 ML, 1/4" diameter opening fits all standard pipets  
The "Flip Style" Pipette Fillers are usable with one hand and are easier to clean the insides  
Imported from Germany

**ITEM NUMBER** FLIP-005

**SHIPPING WEIGHT** 0.1 LB

---



## "Flip Style" Natural Rubber Pipette Filler Kit

50 ML Two Valve Safety "Flip Style" Pipette Filler, Natural Rubber, Usable up to 100 ML. Kit Contains One Each Of All Five Colors (Red, Black, Blue, Yellow, and Green), 1/4" diameter opening fits all standard pipets  
The "Flip Style" Pipette Fillers are usable with one hand and are easier to clean the insides  
Imported from Germany

**ITEM NUMBER** FLIPKITS

**SHIPPING WEIGHT** 1 LB

---

## Pipette Filler Kit of Each Style



Includes one natural rubber red three valve pipette filler, one silicon three valve pipette filler, one red natural rubber two valve "FLIP" style pipette filler, and one natural rubber three valve multicolored pipette filler

**ITEM NUMBER** PFKIT4

**SHIPPING WEIGHT** 1 LB

---

# LIQUID HANDLING



## 10 uL MiniPet pipettor



Unique miniature size pipettors provide accurate fixed volume dispensing. Ideal for micro volumes and gel loading applications. Accept universal fit disposable pipette tips. Use our item #D590 Available in two sizes, color-coded for easy identification. Accuracy 0.3 $\mu$ l and 0.6 $\mu$ l respectively.

**ITEM NUMBER** 347020

**SHIPPING WEIGHT** 0.2 LB

---

## 20 uL MiniPet pipettor



Unique miniature size pipettors provide accurate fixed volume dispensing. Ideal for micro volumes and gel loading applications. Accept universal fit disposable pipette tips. Use our Item #D590 Available in two sizes, color-coded for easy identification. Accuracy 0.3 $\mu$ l and 0.6 $\mu$ l respectively.

**ITEM NUMBER** 342021

**SHIPPING WEIGHT** 0.2 LB

---

## 10 uL MiniPet pipettor and Tip Kit



This kit comes with five 10 $\mu$ l fixed volume mini-pipettors and a pack of 1000 pipette tips. Includes Fischer Technical Company part number 347020 (pipettor) and D590 (Tips)

**ITEM NUMBER** 347020-SET

**SHIPPING WEIGHT** 1 LB

---

## 20 uL MiniPet pipettor and Tip Kit



This kit comes with five 20 $\mu$ l fixed volume mini-pipettors and a pack of 1000 pipette tips. Includes Fischer Technical Company part number 347021 (pipettor) and D590 (Tips)

**ITEM NUMBER** 342021-SET

**SHIPPING WEIGHT** 1 LB

# PIPETTE TIPS



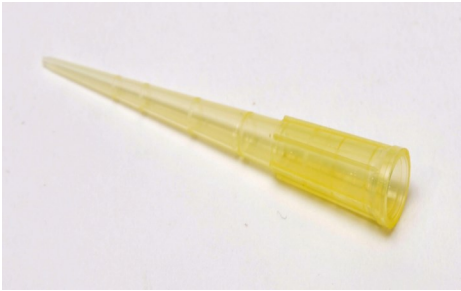
## 10uL Multifit Pipette Tips

Multifit Pipette Tips- 10 $\mu$ l, Pack of 1000

**ITEM NUMBER** D591

**SHIPPING WEIGHT** 0.4 LB

---



## 200uL Multifit Pipette Tips

Multifit Pipette Tips-200 $\mu$ l, Pack of 1000. Fits 10 to 200  $\mu$ l .Micropipettes

**ITEM NUMBER** D590

**SHIPPING WEIGHT** 0.4 LB

---



## 1ML Multifit Pipette Tips

Multifit Pipette Tips– 1ML, Pack of 1000 Fits 100-1000 $\mu$ l Micropipette

**ITEM NUMBER** D592

**SHIPPING WEIGHT** 1.8 LBS

---



## 5ML Multifit Pipette Tips

Multifit Pipette Tips-5ML, Pack of 500, Fits 500-5000 $\mu$ l Micropipette

**ITEM NUMBER** D893

**SHIPPING WEIGHT** 2.4 LBS



## **We proudly represent these manufacturers:**

**ACCURATE WIRECRAFT- WIRE TEST TUBE RACKS, Drain Racks, Funnel Supports, Baskets, Slant Racks, Centrifuge Bottle Racks, Radiation and Biohazard Racks. Available in Epoxy, Vinyl, or Zinc coating. Quotes on special racks are encouraged.**

**BODY SCIENTIFIC INTERNATIONAL – Anatomy and Disease educational posters backed with 3M “Post It” material. Available direct from Fischer Technical Company**

**CULTURE MEDIA AND SUPPLIES- PREPARED MEDIA – Standard and custom formulations are available in plates, slants, bottles, and tubes. Buffer Solutions and Sensitivity Discs are also offered. Dehydrated culture media is supplied in bulk or repacked in convenient small lots.**

**FEENIXX PUBLISHING, INC.- Publishers of Life on Earth Posters, All posters laminated and sets of posters also available. Available Direct From Fischer Technical Company**

**HOLLAND GREEN SCIENCE- Designs and manufactures extraction and processing equipment specifically tailored for research and production of cannabis, herbs, and other medicinal botanicals.**

**KERKAU MANUFACTURING- STERILIZING CABINETS. Cabinets available in steel and stainless steel and are useful for sterilizing goggles, headsets, smartphones, lab tools, keys, and any other shared items in the lab or workplace. Cabinets are made in the USA and can be drop shipped to your customers.**

**UNITED SCIENTIFIC SUPPLIES- Extensive line of Laboratory Hardware, Plastic Labware, Borosilicate Glassware, Liquid Handling, Life Science Products, Personal Protective Equipment, Porcelain Labware, General Laboratory Supplies, STEM Education Kits, and Science Education supply items. Extensive international sourcing for tough to find/high demand items. 30 years of experience sourcing and assembling laboratory and classroom science supply kits.**





## **Fischer Technical Company is a Manufacturer's Representative Agency in the following markets:**

**GENERAL LABORATORY SUPPLIES** – Many of our distributors focus on products that can be found in all types of laboratories. Ranging from the largest in the US down to the small entrepreneurial business.

**LIFE SCIENCE CONSUMABLES** – We can help source tough to find and unique products designed for the pharmaceutical and research market.

**SCIENCE EDUCATION** - Fischer Technical and our portfolio of manufacturers are one of the largest suppliers of classroom demonstrations, lab equipment, kit components, and student safety products.

**ASPHALT AND CONCRETE** - Our line of vacuum pumps have been a staple of the Asphalt industry for over 30 years.

**JEWELRY MANUFACTURING** - Fischer Technical Vacuum pumps hold up to the usage demands of the jewelry casting market.

**CONTACT US AT [SALES@FISCHERTECH.COM](mailto:SALES@FISCHERTECH.COM) if you would like us to represent your product line. We cover the US and Canadian markets. Let us get your products listed by our large network of distributors!**





## Ordering information:

- ◆ **Please email orders to [orders@fischertech.com](mailto:orders@fischertech.com) or fax to 630-980-9881**
- ◆ **All products come with a 12 month warranty against manufacturer's defects.**
- ◆ **All product returns/repairs must first receive a RTN number. Please call us at 630-980-9780 or email us at [orders@fischertech.com](mailto:orders@fischertech.com) to obtain a return authorization number before returning products or sending them in for repairs.**
- ◆ **Minimum order is \$50. We will ship orders under \$50, but they will incur a \$10 small order fee.**
- ◆ **No additional drop ship fees.**
- ◆ **Fischer Technical can ship on your UPS or FedEx account or we can ship pre-pay and add.**
- ◆ **Standard terms are Net-30 with approved credit.**





## **Resources available to merchandise our products on your website:**

- ♦ **Professionally shot digital images stored in our dropbox folder for use in your print catalog and website. (Contact us for the link/password.)**
- ♦ **Comprehensive “Master Product Worksheet” to help load our products easily on your website and into your systems. Includes shipping dimensions, catalog copy, pack quantities, current pricing, product categories, etc.**
- ♦ **Some of our products have YouTube videos available for you to embed or link from your website. More videos to come!**
- ♦ **Our prices are guaranteed for the entire calendar year. No surprise mid-year increases.**
- ♦ **We do not sell direct to end users. Only authorized resellers can offer our product line.**
- ♦ **Contact us at [sales@fischertech.com](mailto:sales@fischertech.com) for access to images and our Master Product Worksheet.**







## **Fischer Technical Company**

840 West Lake Street  
Suite 404  
Roselle, IL 60172  
Phone: 630-980-9780  
Fax: 630-980-9881  
Email: [sales@fischertech.com](mailto:sales@fischertech.com)  
Web: [www.fischertech.com](http://www.fischertech.com)

**Facebook: [www.facebook.com/  
FischerTechnicalCompany](http://www.facebook.com/FischerTechnicalCompany)**

**Linkedin: [https://  
www.linkedin.com/company/  
fischer-technical-company](https://www.linkedin.com/company/fischer-technical-company)**