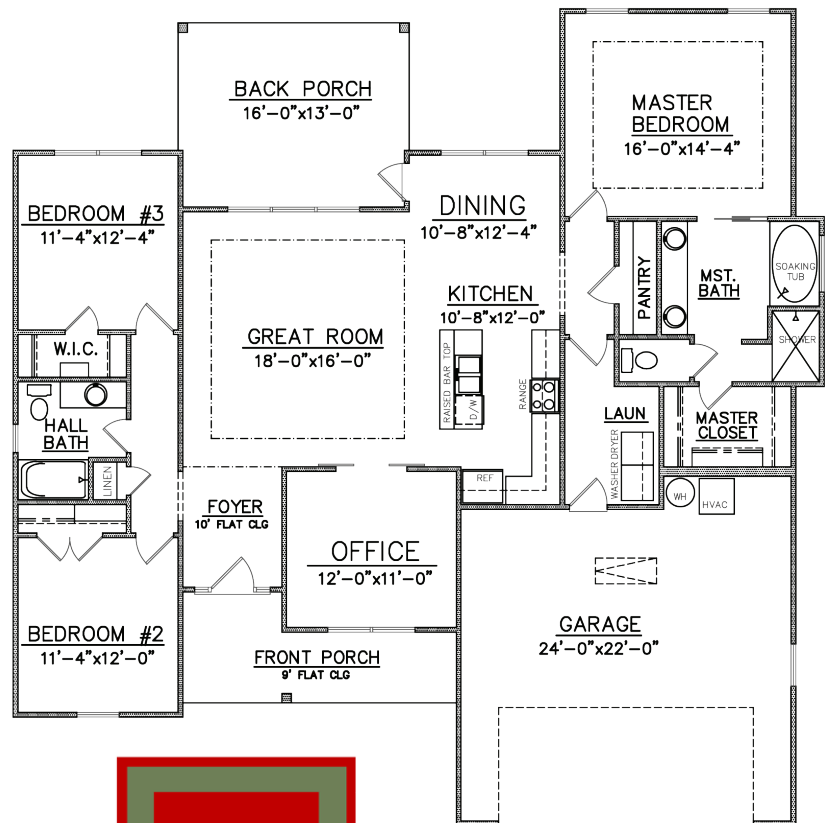




The 1835 Plan

JOSSELYN HOMES

- THREE BEDROOM, TWO BATHROOM
- FLEX ROOM/OFFICE
- 1835SQFT (PER BUILDERS PLANS)
- OPEN CONCEPT LIVING W/ ISLAND KITCHEN
- SOLID SURFACE COUNTERTOPS THROUGHOUT
- CROWN MOLDING
- 9FT CEILINGS
- CUSTOM CABINERY W/ SOFT CLOSE HINGES
- STAINLESS STEEL APPLIANCE PACKAGE
- EVP THROUGHOUT MAIN LIVING AREA, CARPET IN BEDROOMS
- MAINTENANCE FREE STUCCO OR LAP CONCRETE SIDING
- SELLER/BUILDER IS LICENSED REAL ESTATE AGENT IN GA
- SQFT & ELEVATIONS MAY VARY, PER BUILDERS PLANS



Construction by Josselyn Homes, Inc.

W.E. Josselyn III
C: 912.576.9424
Joss@JosselynHomes.com

P.O. Box 5793
St. Mary's, Georgia 31558

Builder is Licensed Real Estate Agent in GA



JOSSELYN
HOMES

We can build in your neighborhood or ours. Ask us about our many floor plans or visit JosselynHomes.com for more information.

Voted Camden County's Best Builder/Contractor for 2013 and 2014.

