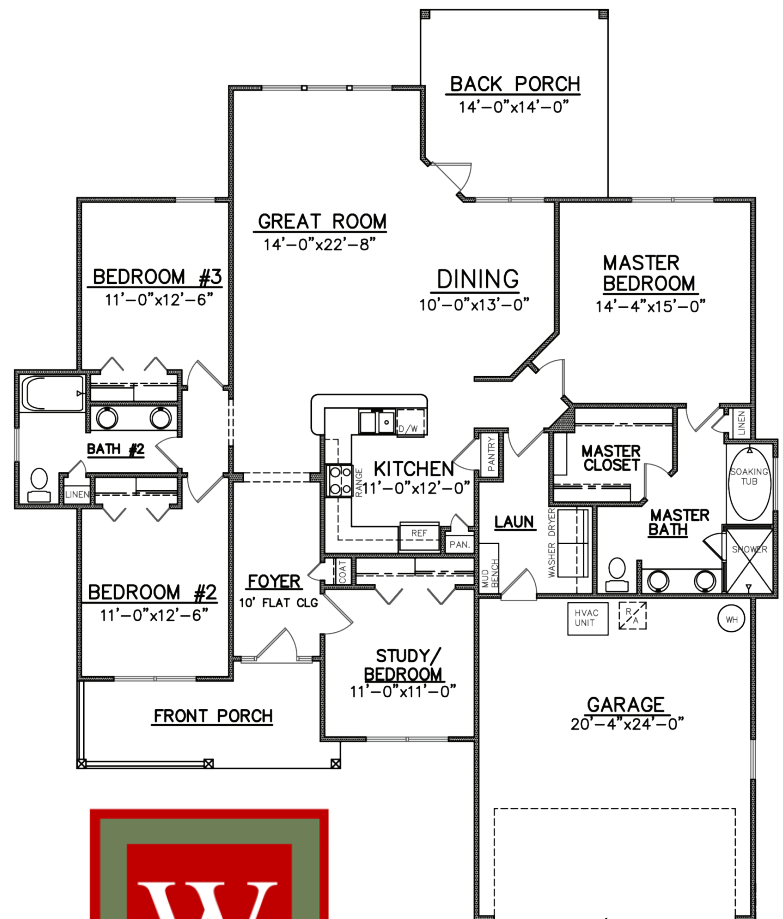




The 1935 Plan

JOSSELYN HOMES

- FOUR BEDROOM, TWO BATHROOM
- 1,935 SQFT (PER BUILDERS PLANS)
- OPEN CONCEPT LIVING W/ SPLIT FLOOR PLAN
- SOLID SURFACE COUNTERTOPS THROUGHOUT
- CROWN MOLDING
- 9FT CEILINGS
- CUSTOM CABINETRY W/ SOFT CLOSE HINGES
- STAINLESS STEEL APPLIANCE PACKAGE
- EVP THROUGHOUT MAIN LIVING AREA, CARPET IN BEDROOMS
- MAINTENANCE FREE STUCCO OR LAP CONCRETE SIDING
- SELLER HOLDS A REAL ESTATE LICENSE
- SQFT & ELEVATIONS MAY VARY, PER BUILDERS PLANS



Construction by Josselyn Homes, Inc.

W.E. Josselyn III
 C: 912.576.9424
 Joss@JosselynHomes.com

P.O. Box 5793
 St. Mary's, Georgia 31558

Builder is Licensed Real Estate Agent in GA



**JOSSELYN
 HOMES**

We can build in your neighborhood or ours. Ask us about our many floor plans or visit JosselynHomes.com for more information.

Voted Camden County's Best Builder/Contractor for 2013 and 2014.

