

Neighborhood Tree Mini Grant





- **GOALS:**
 - Have an adequate tree canopy coverage (30%) throughout the city
 - Trees to thrive and survive in appropriate growing space with limited no underground, ground level or above ground obstacles.
 - Diversity of tree species to create a healthier and more resilient urban environment.
 - Creating a successful strategy to cope with climate change.
 - Visual beautification impact along neighborhood streets; and
 - Opportunity for neighborhoods to engage residents and share the benefits of connecting to their associations.



Where should we plant a tree?
What type of tree should we plant?



Good examples

New planting





Categories of shade trees for this Grant include

Type II – Right of Way width (5-8 ft)

Type III - Right of Way width (8-15 ft)

Type IV Right of Way width (15+ ft)

Right of way (ROW) is the public space typically between the roadway curb and edge of private property.

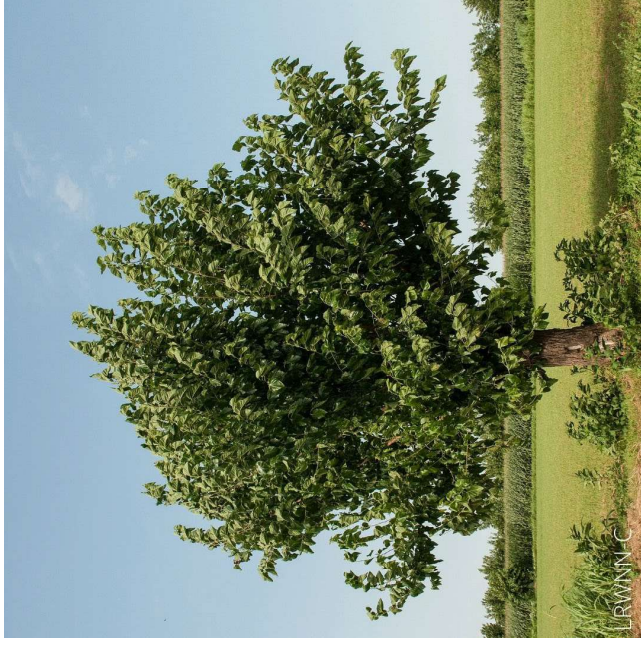


Category II – Row 5 – 8 feet

Gumbo Limbo



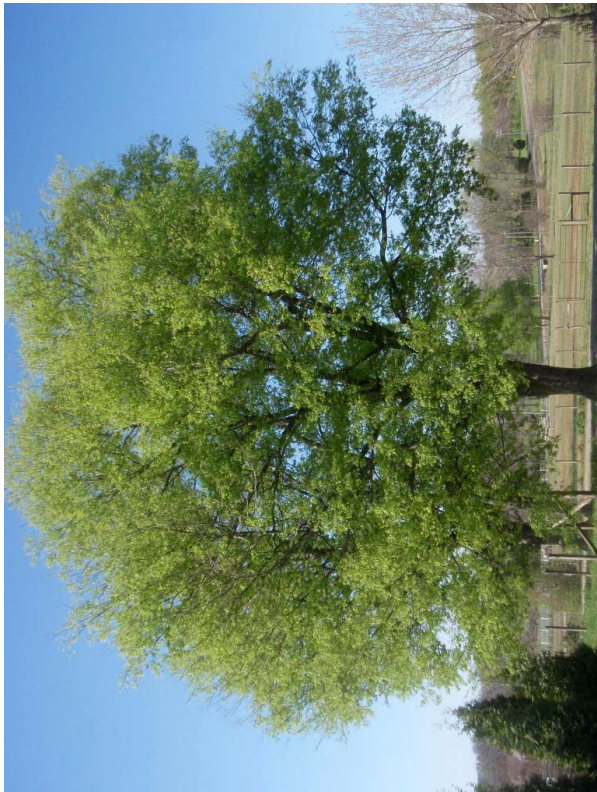
Red Mulberry





Category III - ROW 8 - 15 feet

Sugarberry



Geiger





Category IV - ROW 15 feet or greater

Southern Live Oak



Pignut Hickory





What we want to avoid

* Overhead impacts: This was an acceptable tree trim from Duke Energy contractor (per certified arborist standards)





What we want to avoid
Ground Level Impacts:
Live oak (Category IV)
next to the sidewalks





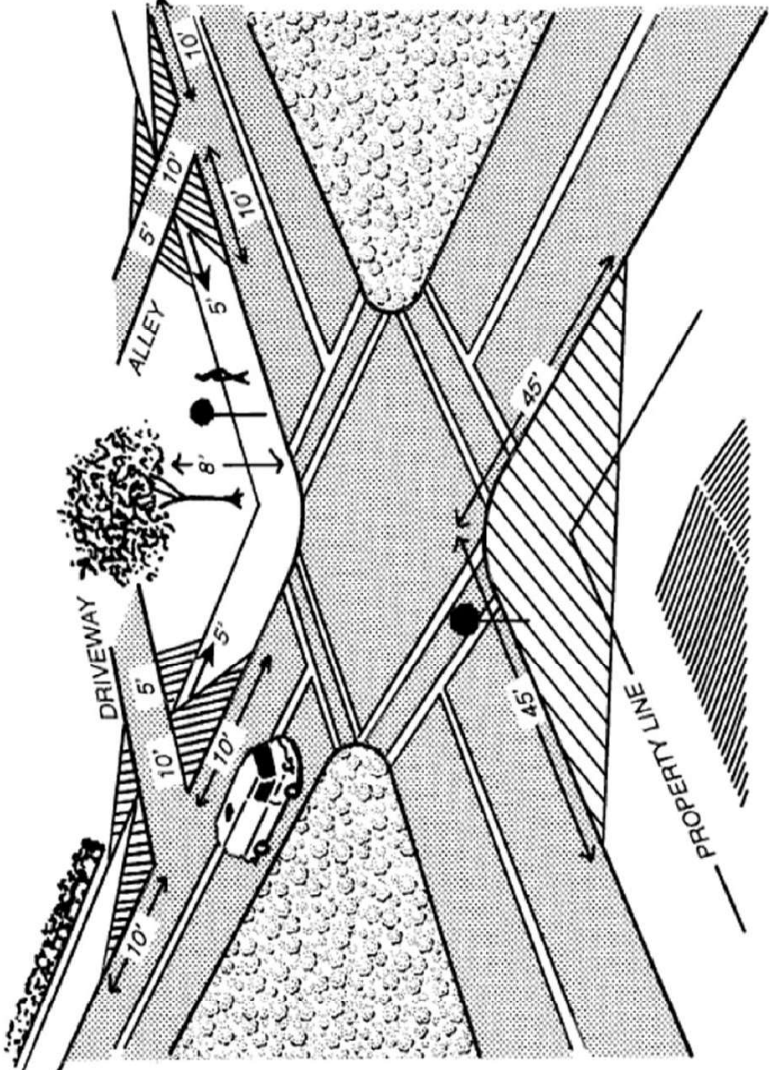
Beautiful tree - wrong place – WHY?





The Visibility Triangle

- Street Intersections
- Alley entrance/Driveways
- Sidewalks





Other concerns...

- Street signs (e.g. speed limit, stop signs)
- Cable lines or street light wires - above
- Power lines – above or below
- Fire hydrants
- Underground city utilities
- Underground non city utilities
- Nearby landscaping including other trees

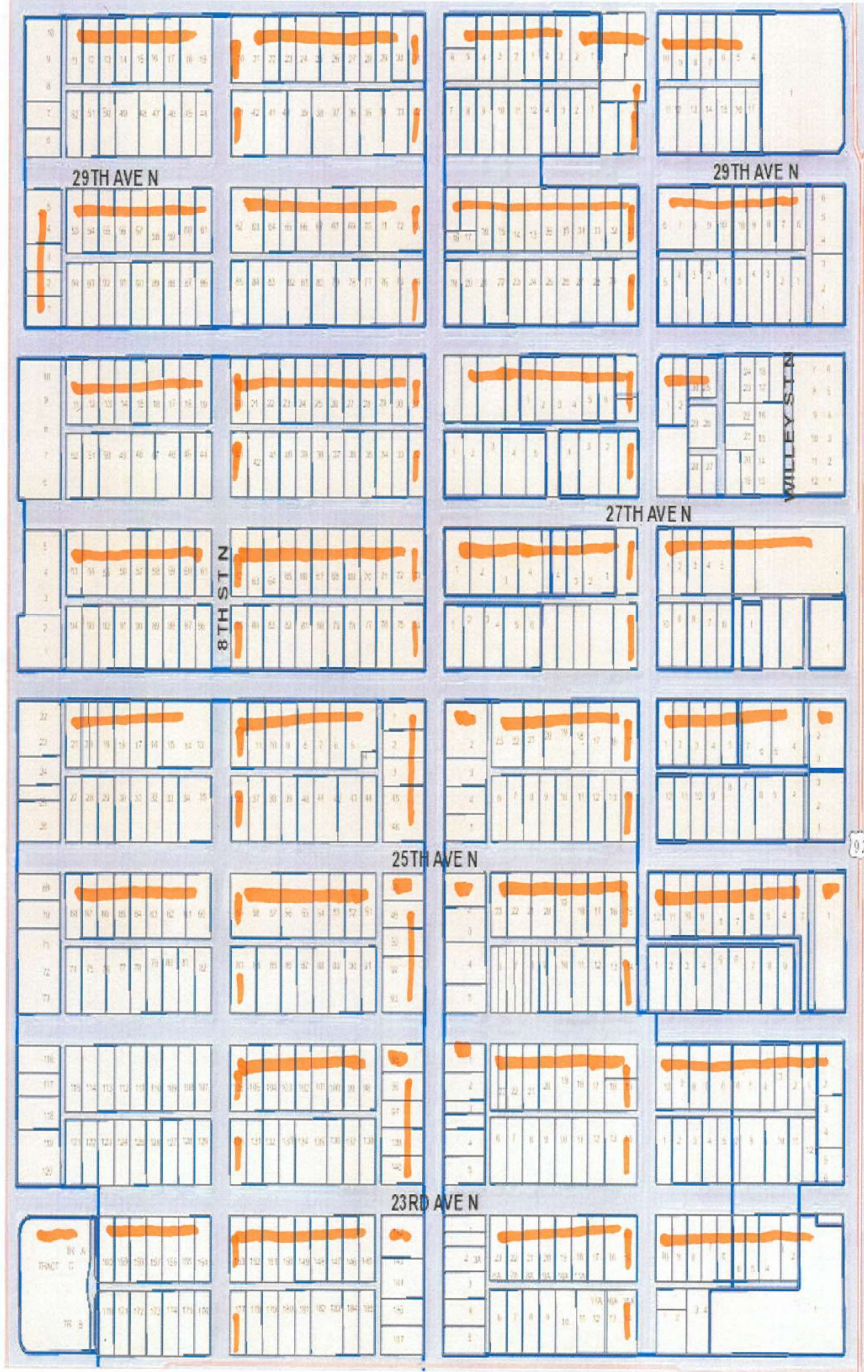


How to start?

- Attend preapplication meeting to have a better understanding of the process and why.
- Obtain an application from the Neighborhood Relations Department – **January 31, 2024 deadline.**
- Obtain a map of your neighborhood association with potential locations map from your Community Service Representative.
- Start looking at potential locations – get approval from property owners at possible locations.
- Return all documentation to the Neighborhood Relations Department for review.



Neighborhood Map Example



Orange - Potential locations for future plantings



Possible Address	Corner property Y/N *	What is the planting distance from Alley corner, driveway or Street intersection *	Are Street light lines/Cable lines above Y/N **.	What is the distance from sidewalk to Curb (green space 5 feet minimum req.)	If no sidewalk - what is the distance to water meter to curb (green space)	Is the placement a min. of 10 ft from water meter?	Is a street sign near? (speed, no parking etc.) Min. 10 ft required	Any other existing vegetation or trees on ROW or property (Min. 10 ft distance required)	Utility - non city nearby (10 ft min required)	Is there a private path to house from street (10 ft of clearance needed)	Has owner approved and accepted responsibility for potential tree Y/N	Need further review Y/N
120 Happy Tree way (non corner)	N	15 feet	yes	8 feet	NA	Y	No	No	No	No	Yes	Y

* IF Yes tree will need to be outside visibility triangle and meet above criteria - See attached.

** Only category 2 trees can be located at these locations

Street light lines are different than full power lines - No shade tree can be planted where a full power line exists

If there is a question please feel free to reach out to your CSR



QUESTIONS ?

THANK YOU



Neighborhood Relations Department
P.O. Box 2842
727-892-5141
www.stpete.org