

:plot 296, limassol



- one of the TOP 3 developers in Cyprus in the premium real estate segment
- more than 260 employees in 5 countries
- projects:
Cyprus, Greece, Canada, Portugal
- full scope of real estate services from project development to property management





- 145 projects   in portfolio
- 2.4 mln. m² - land bank
- 1,21 mln. m² - sellable area
- 3.2 bln. € - total sales value of all developments





plot 296 – location



limassol



business capital of Cyprus

international community

developed infrastructure

active cultural life

best 5* hotels

world-class restaurants, bars, nightclubs

a variety of private schools

zakaki

newly developed, quiet residential area in Limassol, right next to the mall & casino

easy access to:

- highway
- mall
- city center
- beautiful lady's mile beach
- city of dreams resort & casino

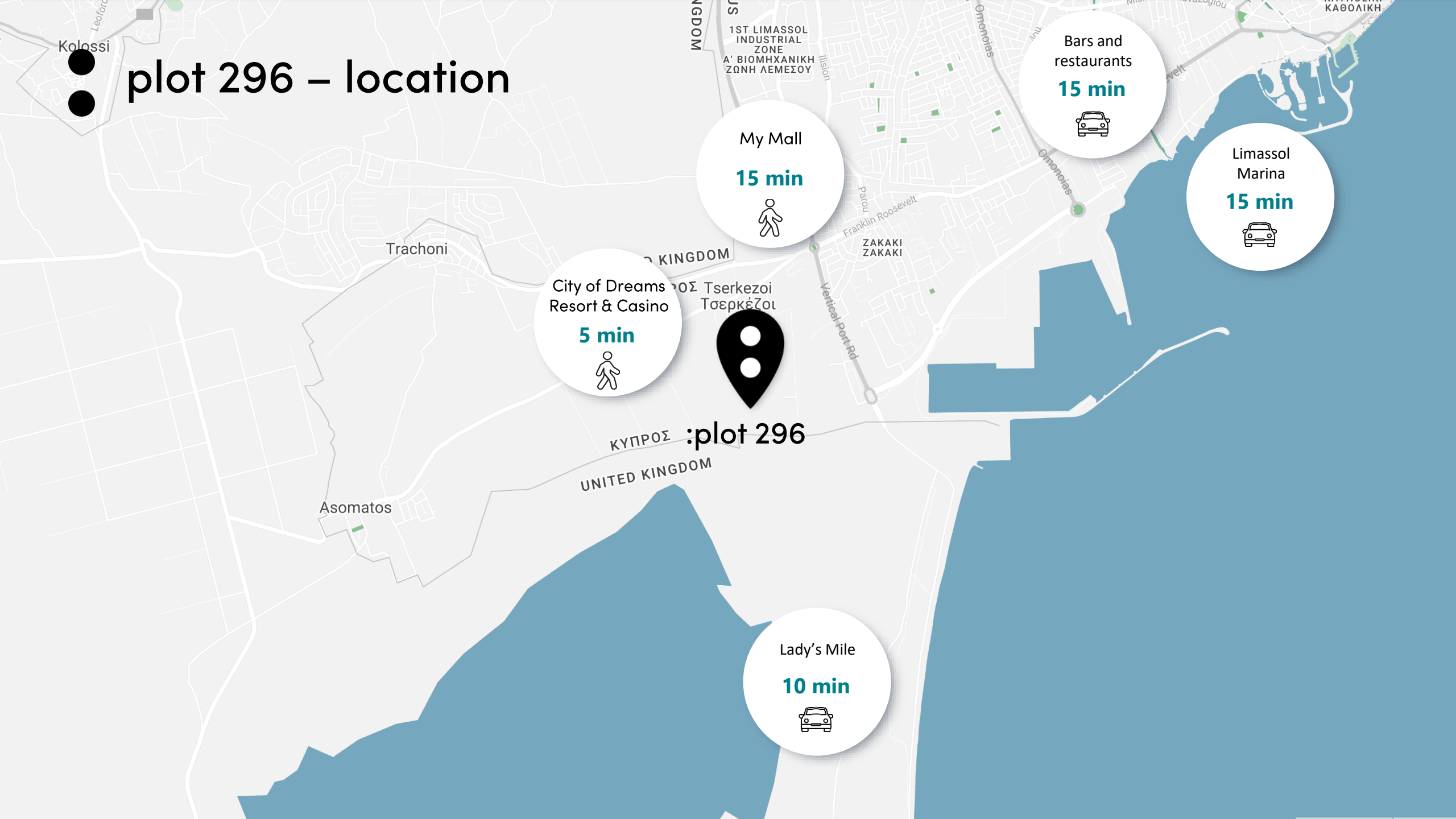
only 15-20 minutes drive to private schools

- heritage
- the island
- pascal





plot 296 – location



My Mall
15 min


Bars and restaurants
15 min


Limassol Marina
15 min


City of Dreams Resort & Casino
5 min




plot 296

Lady's Mile
10 min




plot 296



296

UNITED-KINGDOM

Casa Chiore

Sunset Gardens offices

City of Dreams Mediterranean...

Amber Dragon

Citrine Estates

MY MALL Limassol Parking

MY MALL Limassol

Marks and Spencer

Vertical Port Rd

Pagotaria

Cars

Tiger Offshore Rentals East Med

U549

EUROGATE Container Terminal Limassol

CBA City

Nikou Kawadria

Trikaron

Alaskas

Roxanis

Divino Soa

Agras

Syrov

Sofidy

Sayou



plot 296 – description

●● bbf: plot 209

- villas & townhouses
- plot area 36,863 m²
- sellable area 20,440 m²
- 105 units





plot 296 – project concept

An exclusive gated community surrounded by lush greenery and boasting modern amenities with the intention to offer a well-balanced lifestyle to its residents.

The indoor and outdoor facilities are perfectly equipped with all the necessary amenities, such as a private spa, pool, and a clubhouse, allowing you to relax and unwind in style.

● ● bbf: plot 296

unit mix

- 87 two-bedroom townhouses (comfort finishes)
- 9 three-bedroom villas with private pools
- 6 four-bedroom villas with private pools
- 3 five bedroom villas with private pools

amenities & facilities

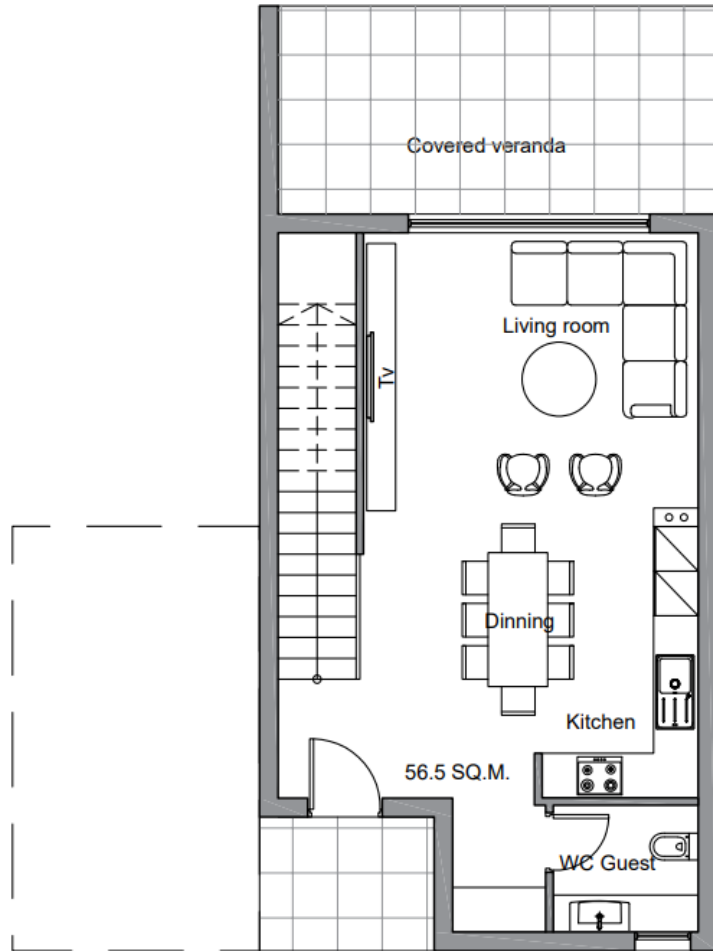
- common swimming pool
- clubhouse
- gym
- spa
- playground



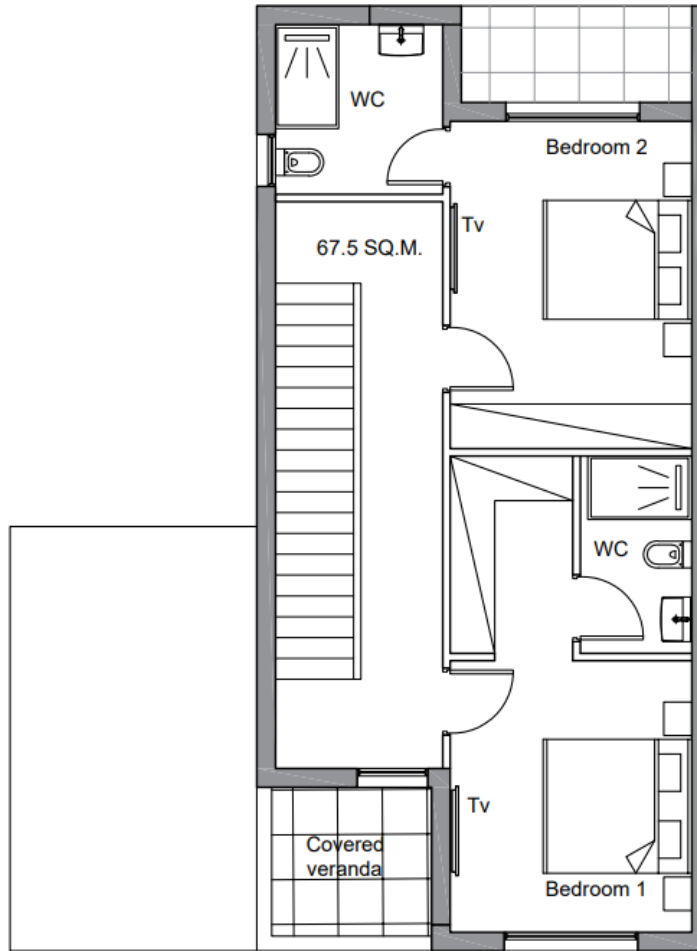
● ● masterplan



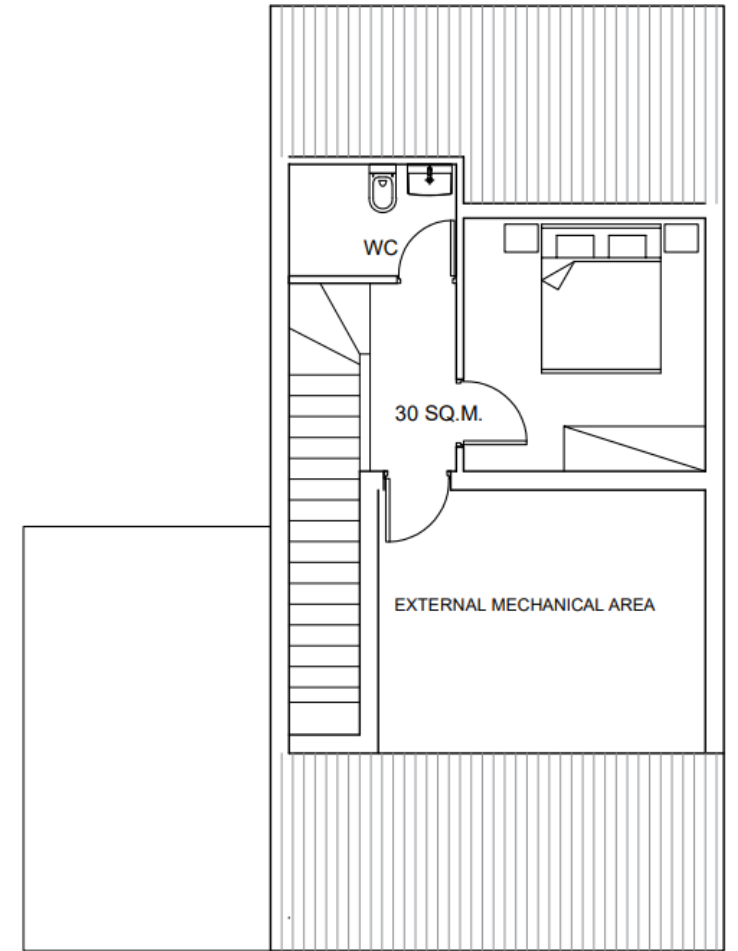
● typical floor plan – townhouse (2-bed)



Ground Floor

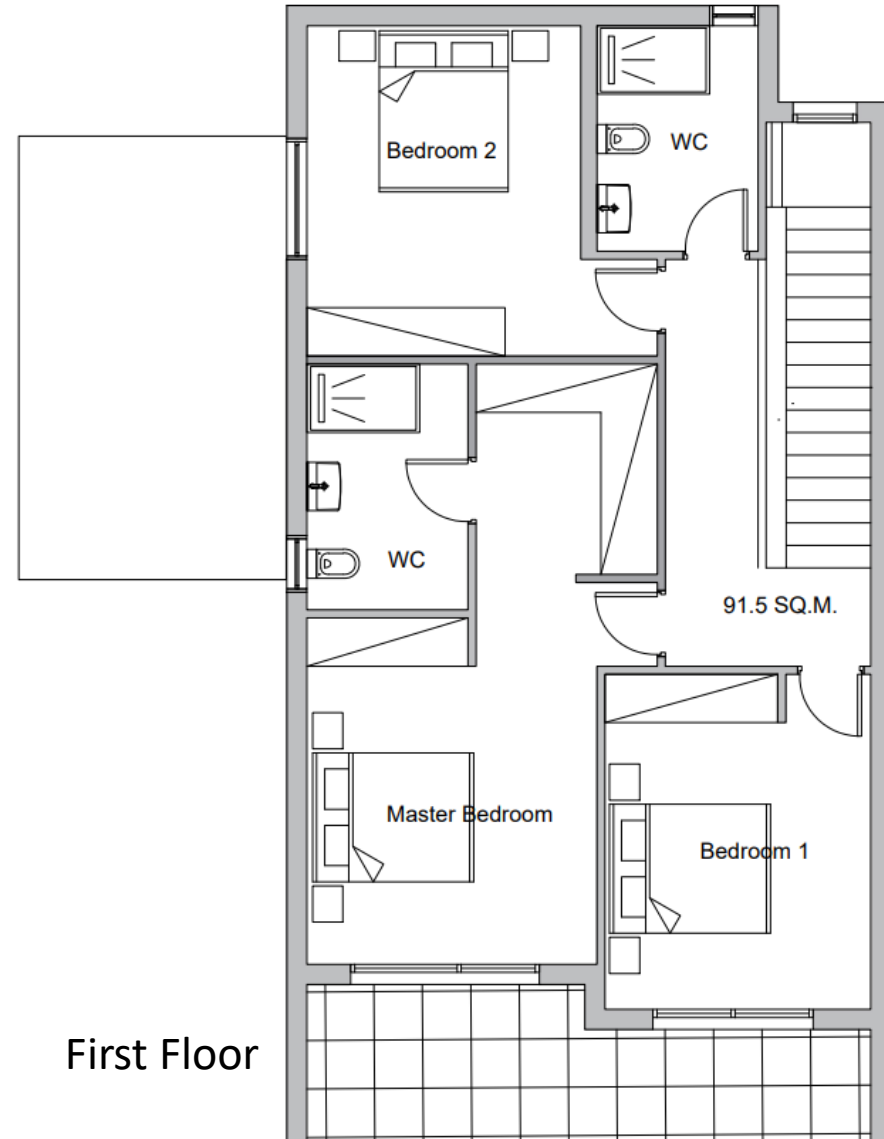
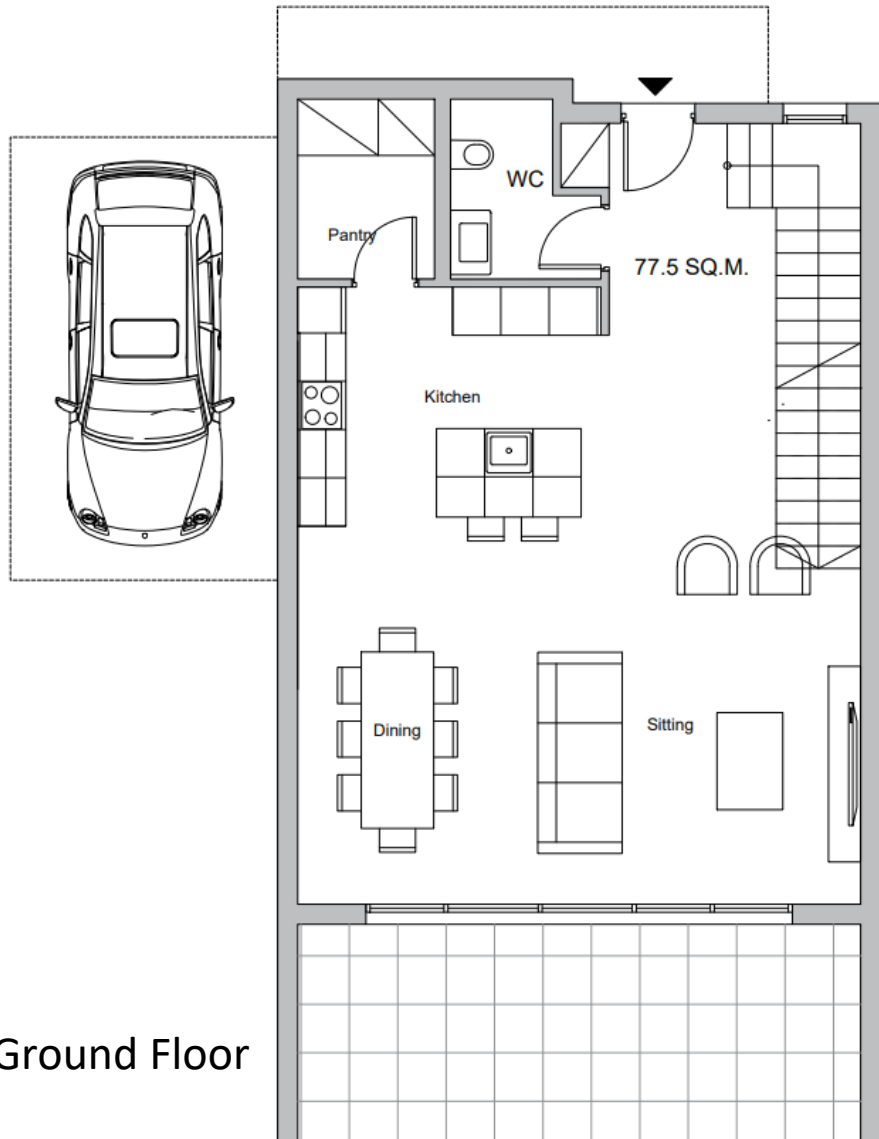


First Floor

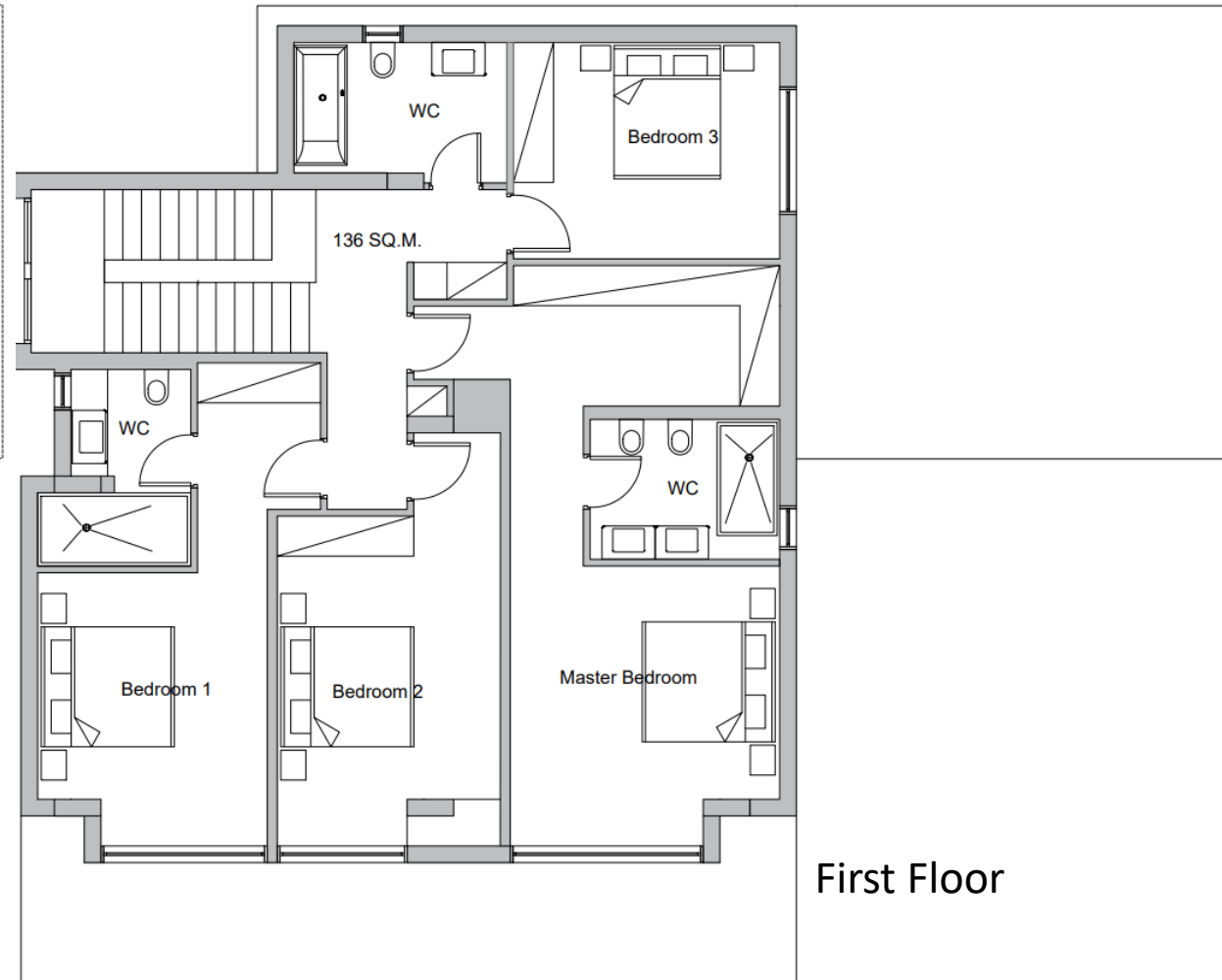
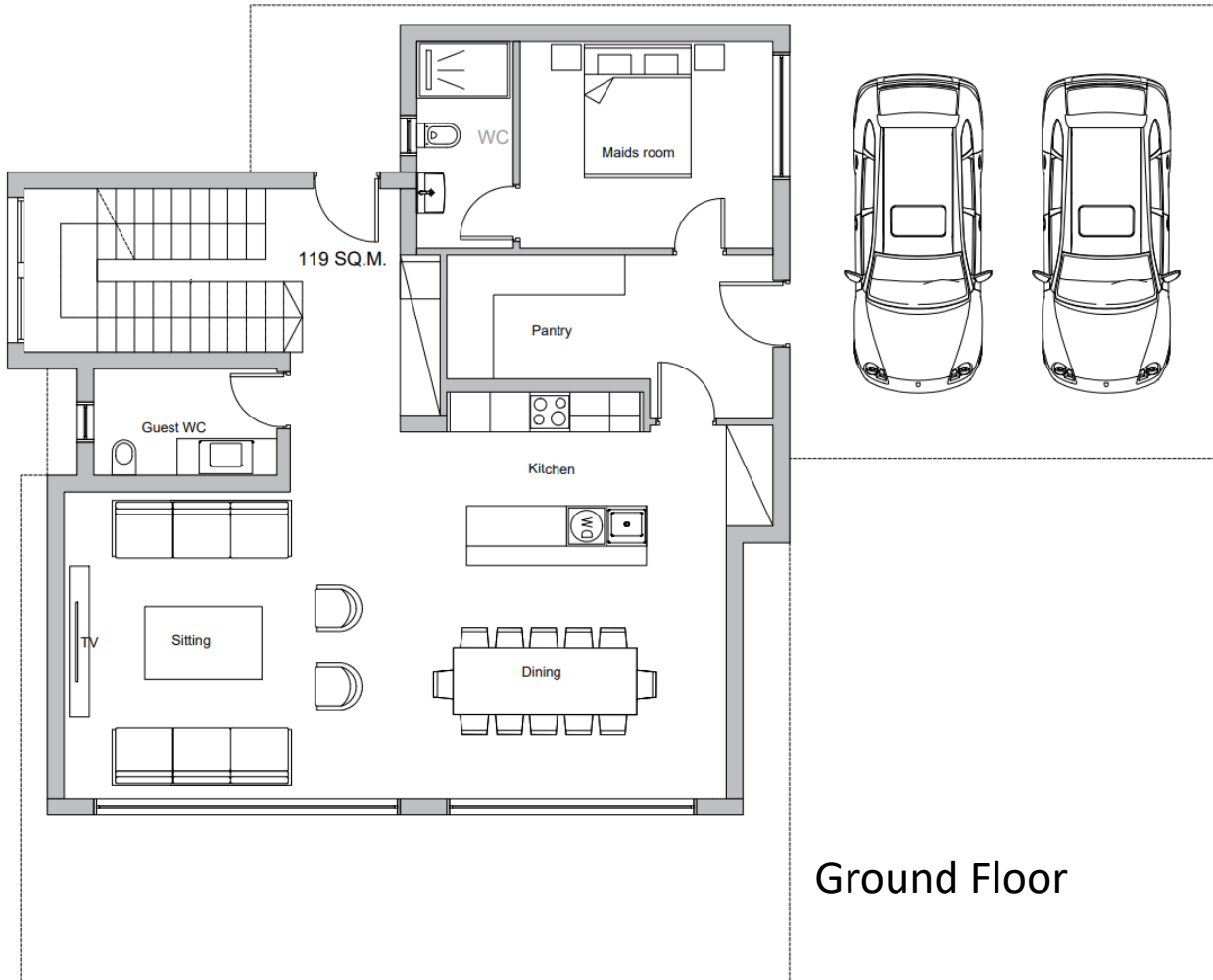


Attic

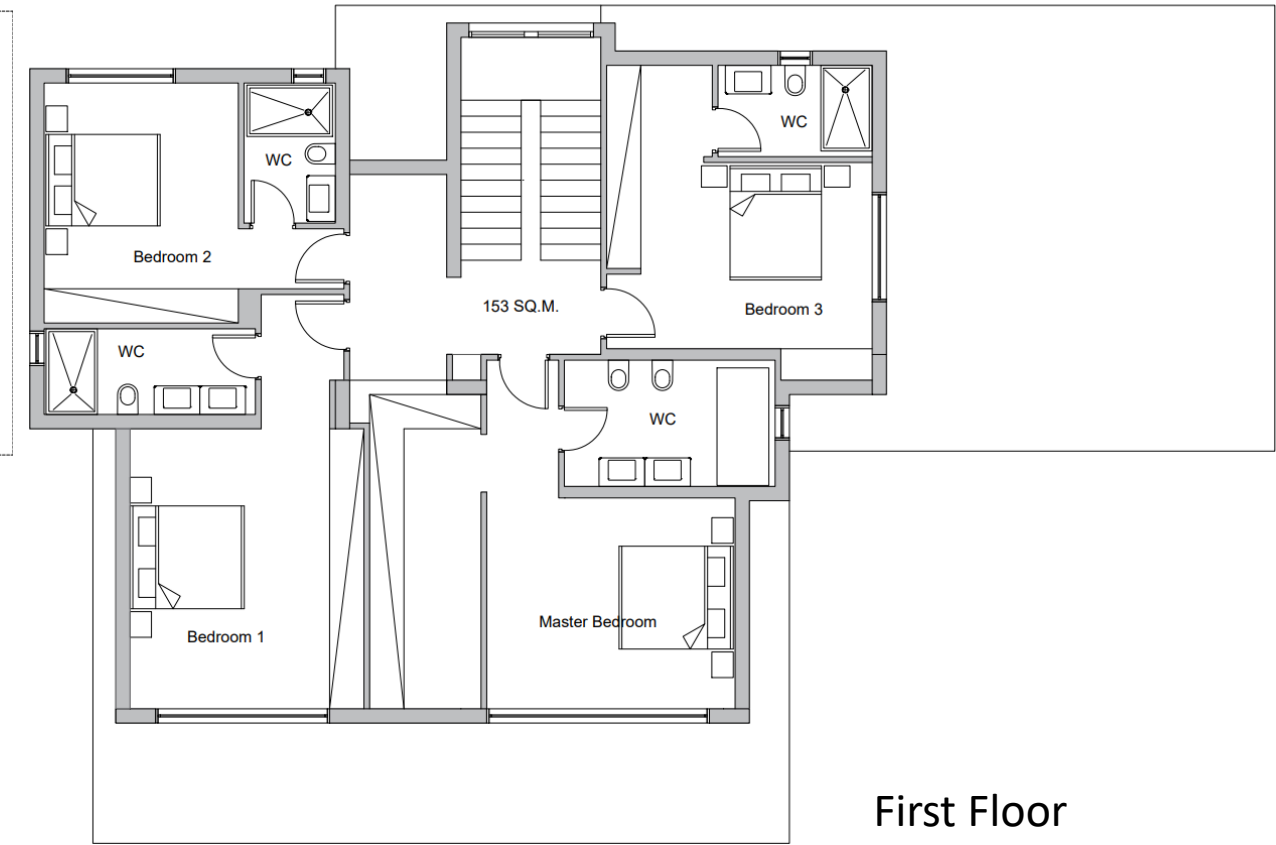
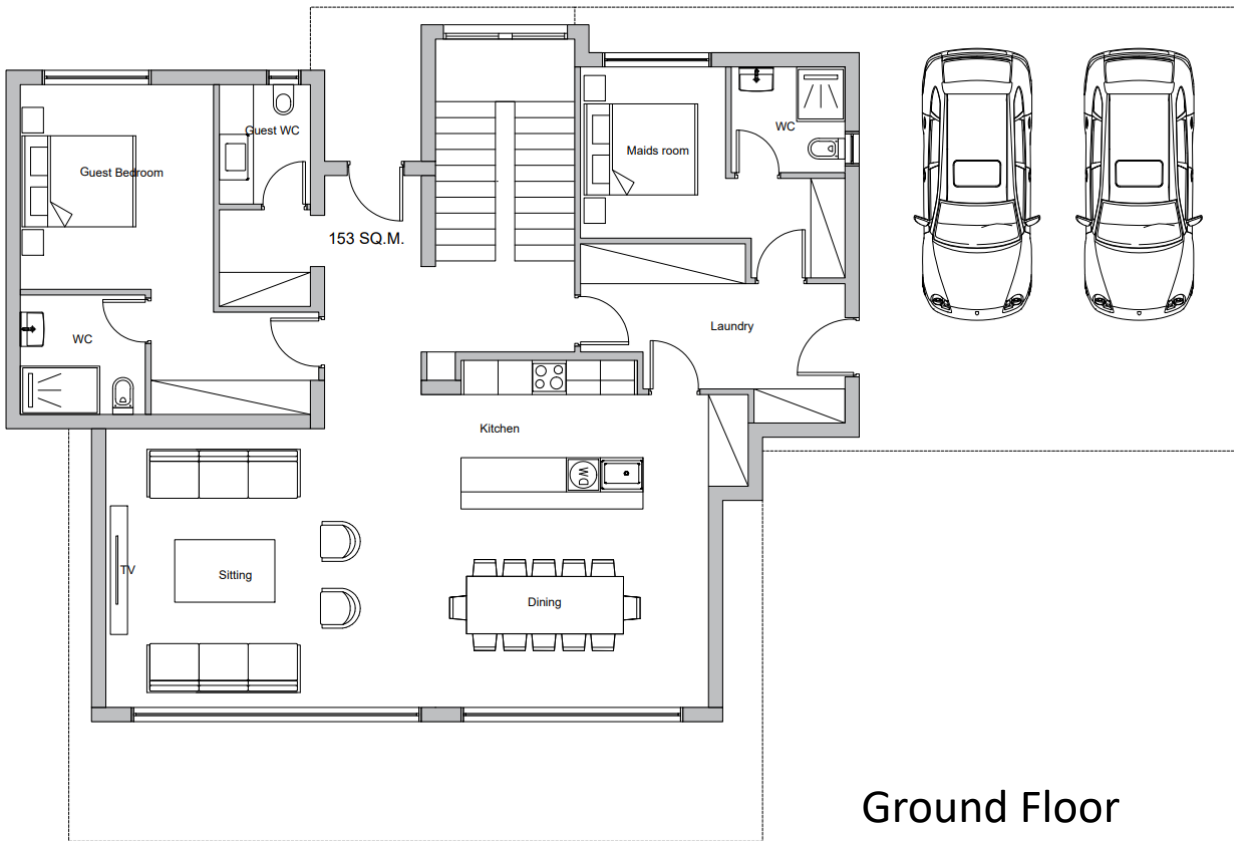
● typical floor plan – villa (3-bed)



● typical floor plan – villa (4-bed)



● typical floor plan – villa (5-bed)



● ● bbf: plot 296 – villas' finishes

- fully completed finishes
- parquet floors in living areas and bedrooms
- marble in the toilets and bathrooms
- hanging, concealed WC & built-in showers
- underfloor central heating
- concealed A/C units in all areas
- high-standard sanitary ware from European brands
- thermal aluminum window frames with double glazing
- high-standard kitchen cabinets & wardrobes from European brands
- living area ceiling height 3.10m



bbf: plot 296 – townhouses' finishes

- fully completed finishes
- laminated parquet in living areas and bedrooms
- ceramic tiles in the toilets and bathrooms
- security and fireproof entrance doors
- provisions for underfloor heating
- provisions for A/C
- high-standard sanitary ware from European brands
- thermal aluminum window frames with double glazing
- high-standard kitchen cabinets
- high-standard wardrobes from European brands
- living area ceiling height 2.80m



bbf:



build. better. future.

bbf®

HEADQUARTERS

Limassol Ambelakion 28 Street,
P. Germasogeia 4046 Limassol,
Cyprus

info@bbf.com

+357(25)-315-300

bbf.com

ATHENS-BEIJING-MOSCOW-ST. PETERSBURG-DUBAI
LIMASSOL-LARNACA-PAPHOS-NICOSIA

