

Sport N Sound

School, College & University Collection



*Decoration for illustration purposes only.



AWDis Cool T-Shirt

Code JC001

- Neoteric™ textured fabric with inherent wickability.
- UPF 30+ UV protection.
- Relaxed fit.
- Self fabric collar.
- Taped neck.
- Twin needle stitching.
- Tear out label.



SOL'S Regent T-Shirt

Code 11380

- Ribbed collar.
- Taped neck.
- Tubular body.
- Twin needle stitching.





Fruit of the Loom Kids Value T-Shirt

Code SS6B

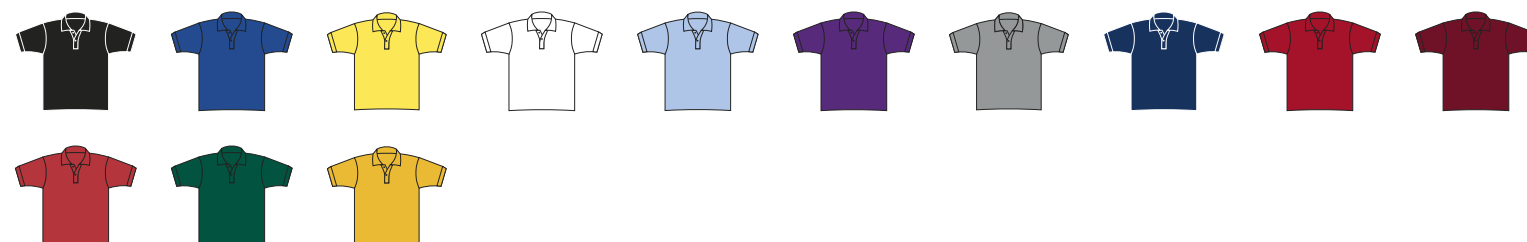
- Cotton/Lycra® ribbed collar.
- Taped neck.
- Tubular knit for shape retention.
- Ages 1-2 and 2-3 have side seams.
- Twin needle stitching.
- Cut out label.



Russell Schoolgear Kids Poly/Cotton Piqué Polo Shirt

Code 539B

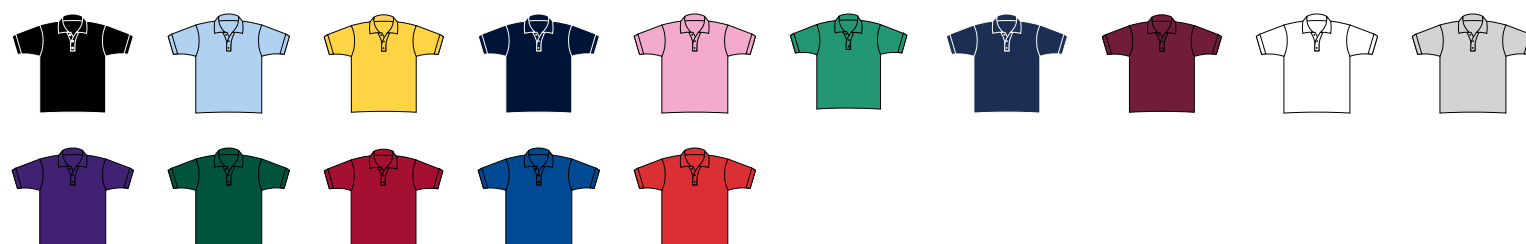
- Ribbed collar and cuffs.
- Taped neck.
- Two self colour button placket.
- Reinforced shoulder seams.
- Twin needle hem.

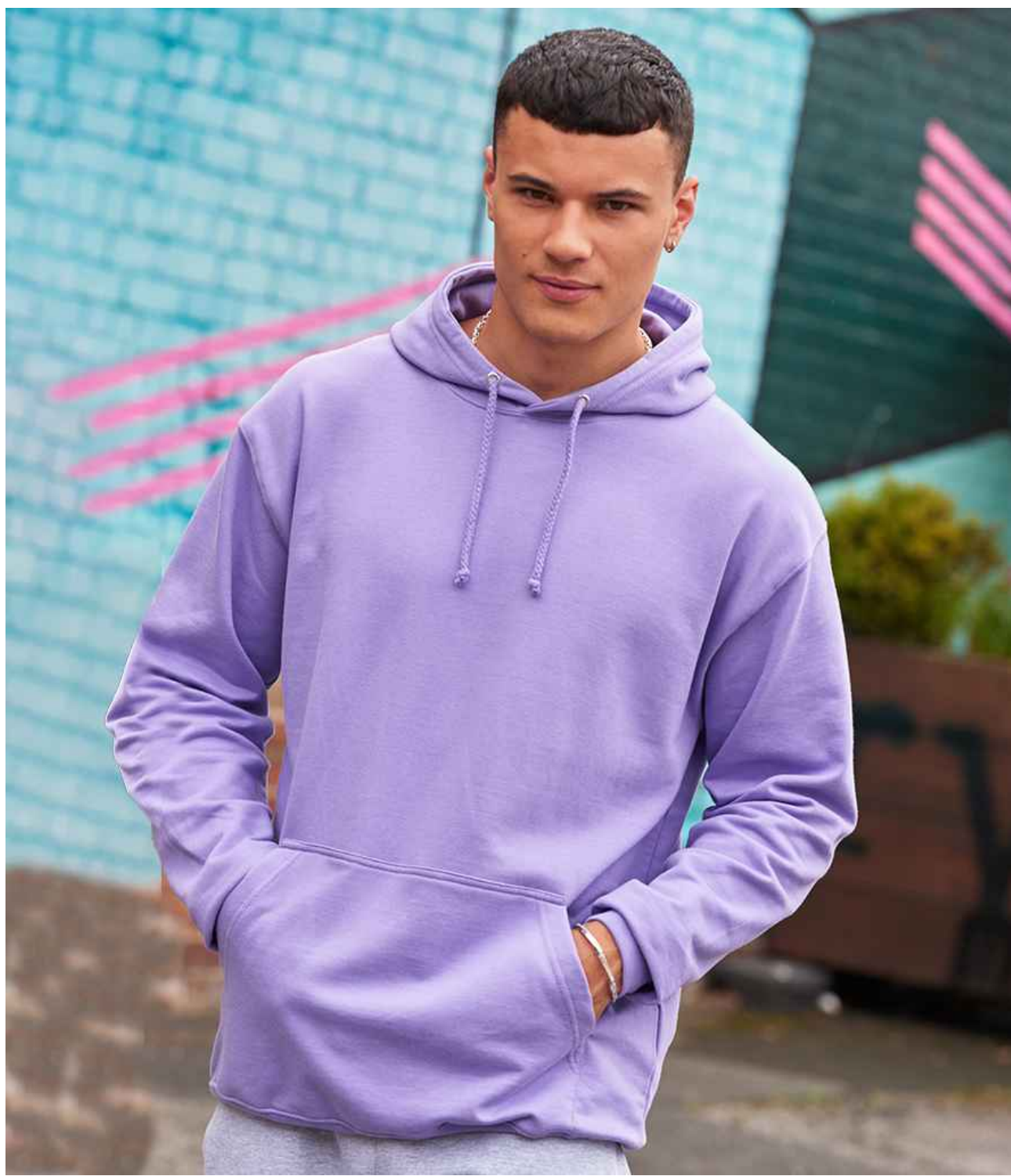


Fruit of the Loom Kids Poly/Cotton Piqué Polo Shirt

Code SS11B

- Ribbed collar and cuffs.
- Taped back neck.
- Two self colour button placket.
- Reinforced shoulder seams.
- Cut out label.
- 60°C wash.





AWDis College Hoodie

Code JH001

- Soft cotton faced fabric.
- Brushed back fleece.
- Drop shoulder style.
- Double fabric hood with self colour drawcord.
- Front pouch pocket.
- Ribbed cuffs and hem.
- Twin needle stitching.
- Tear out label.





AWDis Varsity Hoodie

Code JH003

- Soft cotton faced fabric.
- Brushed back fleece.
- Drop shoulder style.
- Double fabric hood with contrast inner.
- Contrast flat lace drawcord.
- Front pouch pocket.
- Ribbed cuffs and hem.
- Twin needle stitching.
- Tear out label.



AWDis Zoodie

Code JH050

- Soft cotton faced fabric.
- Brushed back fleece.
- Drop shoulder style.
- Double fabric hood with self colour drawcord.
- Full length covered plastic zip.
- Front pouch pockets.
- Ribbed cuffs and hem.
- Twin needle stitching.
- Tear out label.





AWDis Sweatshirt

Code JH030

- Soft cotton faced fabric.
- Brushed back fleece.
- Drop shoulder style.
- Fashion fit.
- Ribbed collar, cuffs and hem.
- Taped neck.
- Twin needle stitching.
- Tear out label.



Gildan Heavy Blend™ Sweatshirt

Code GD56

- Air jet yarn, softer feel and reduced pilling.
- Drop shoulder style.
- Classic fit.
- Ribbed collar, cuffs and hem with spandex.
- Tubular body.
- Twin needle stitching.
- Tear out label.





AWDis Varsity Jacket

Code JH043

- Soft cotton faced fabric.
- Brushed back fleece.
- Knitted collar, cuffs and hem with stripe detail.
- Taped neck with hanging loop.
- Contrast sleeves.
- Contrast stud closure.
- Two welt pockets.
- Tear out label.



AWDis College Cuffed Jog Pants

Code JH072

- Soft cotton faced fabric.
- Brushed back fleece.
- Elasticated waistband with inner drawcord.
- Two side pockets.
- Cuffed leg ends.
- Tear out label.





Beechfield Original Cuffed Beanie

Code BB45

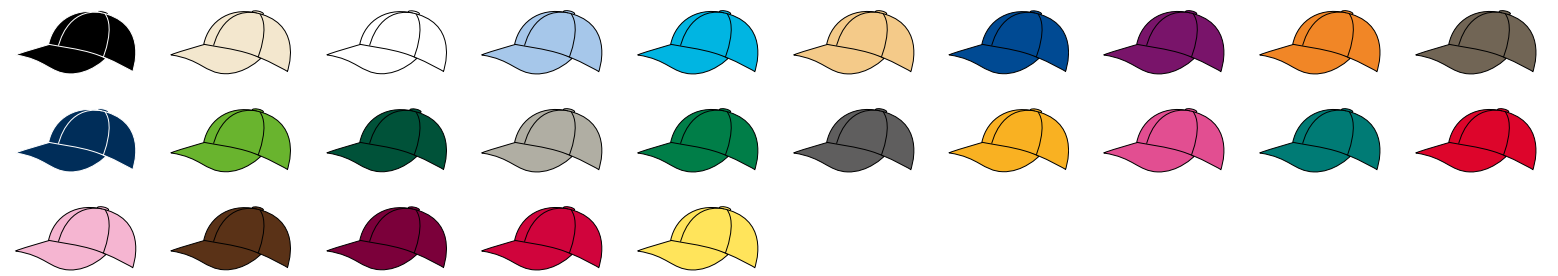
- Double layer knit.
- Cuffed design.



Beechfield Original 5 Panel Cap

Code BB10

- 5 panel.
- Stitched ventilation eyelets.
- Pre-curved peak.
- Rip-Strip™ size adjuster.



Beechfield Ultimate 5 Panel Cap with Sandwich Peak

Code BB15C

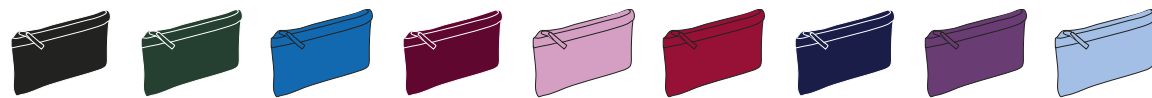
- 5 panel.
- Pre-curved peak.
- Contrast sandwich peak and ventilation eyelets.
- Rip-Strip™ size adjuster.



Quadra Pencil Case

Code QD442

- Main zip compartment.
- Internal identification label.
- Capacity 0.5 litre.



BagBase Athleisure Sports Shoe/Accessory Bag

Code BG540

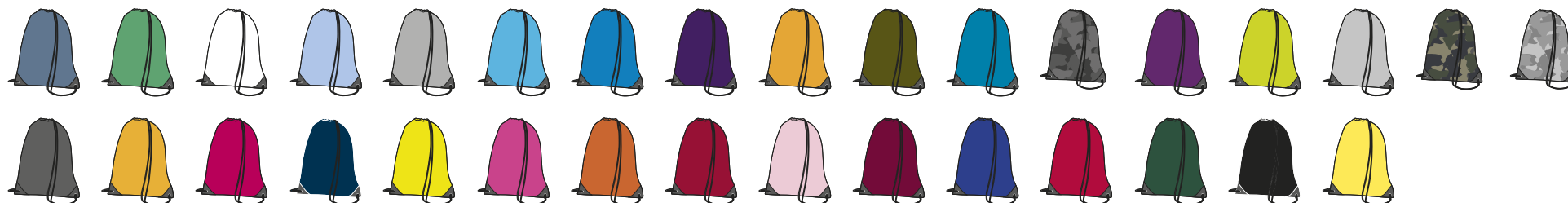
- Water resistant fabric.
- Wipe clean interior.
- Grab handle.
- Rear mesh pocket.
- Authentic metal ventilation eyelet.
- Capacity 8 litres.



BagBase Premium Gymsac

Code BG10

- Water resistant fabric.
- Drawstring carry handles.
- Reinforced corners with gunmetal eyelets.
- Capacity 11 litres.



BagBase Original Fashion Backpack

Code BG125

- Grab handle.
- Padded adjustable shoulder straps.
- Padded back panel.
- Main zip compartment.
- Front zip pocket.
- Tear out label.
- Capacity 18 litres.

