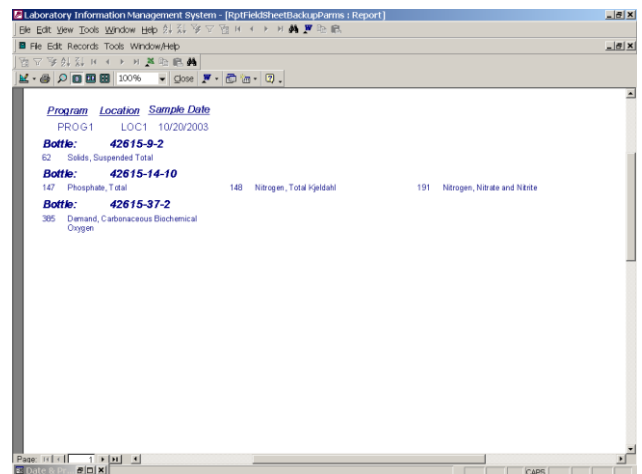
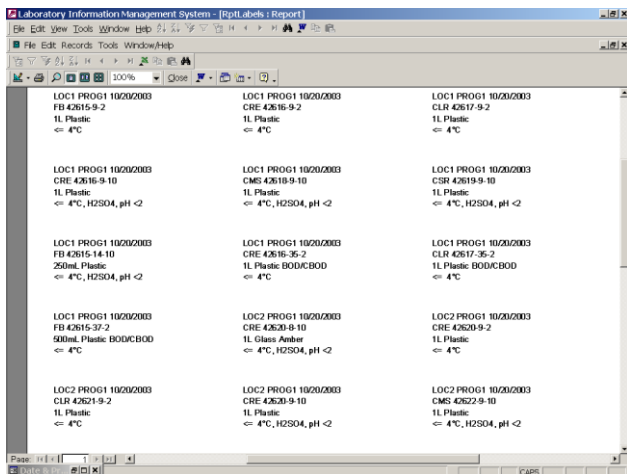
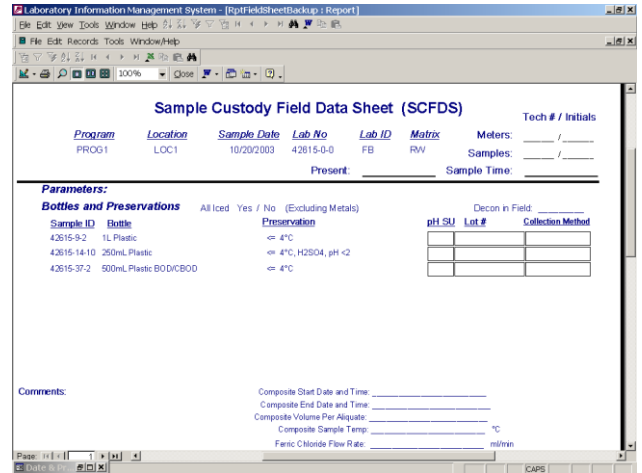
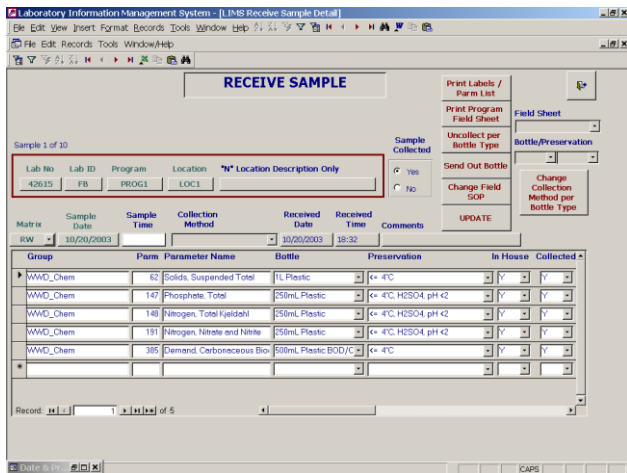
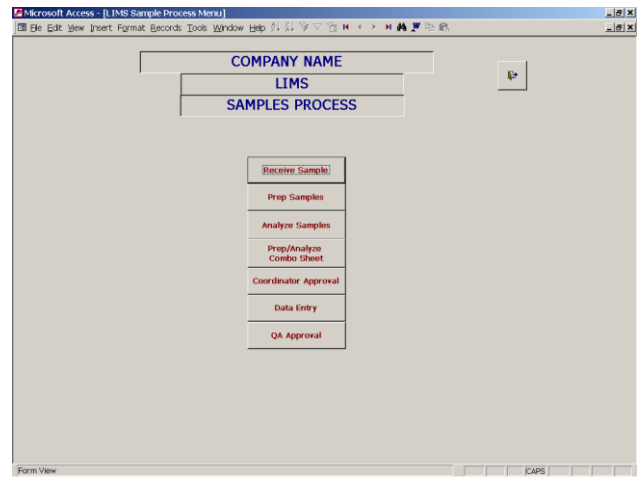
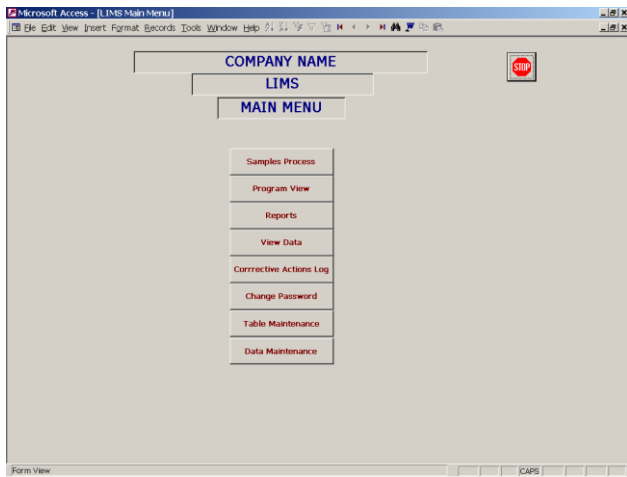
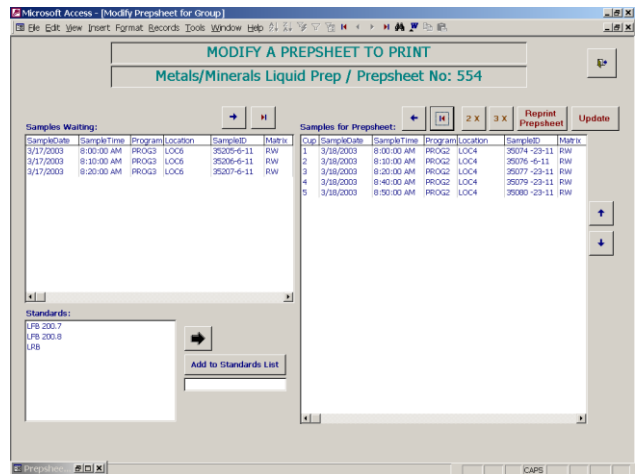
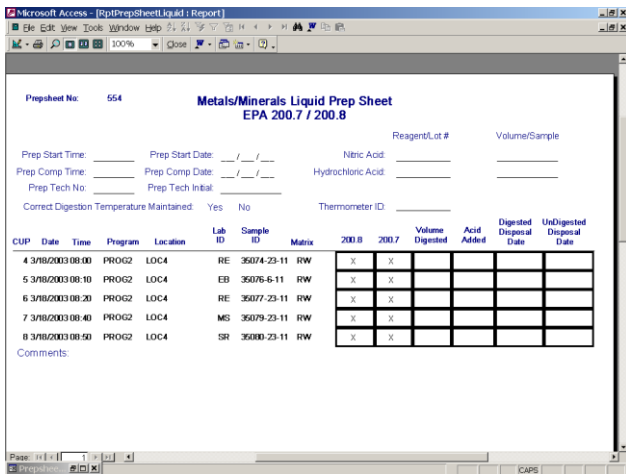
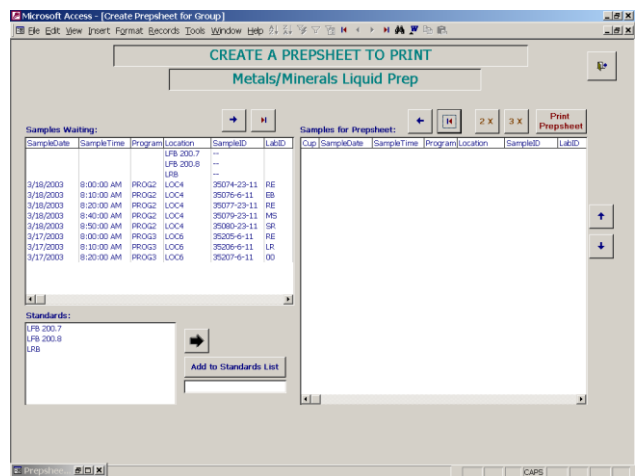
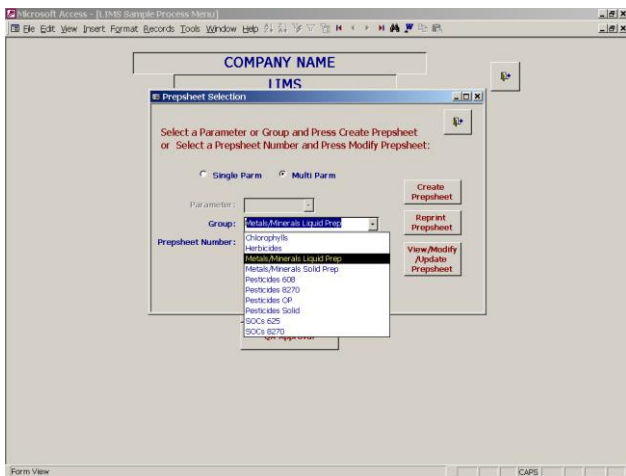
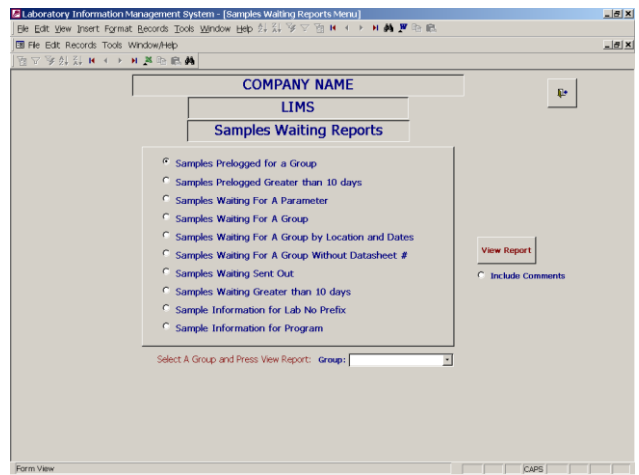
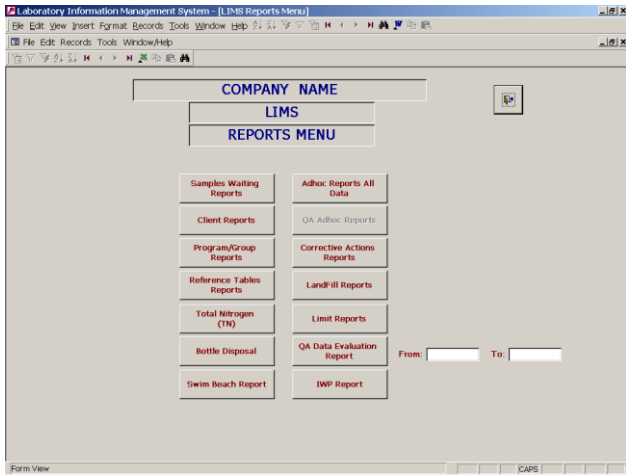


LIMS Sample Application



LIMS Sample Application



LIMS Sample Application

Microsoft Access - [Modify Prepsheet for Group]

MODIFY A PREPSHEET TO PRINT
Metals/Minerals Liquid Prep / Prepsheet No: 554

Samples Waiting:

SampleDate	SampleTime	Program	Location
3/17/2003	8:00:00 AM	PROG2	LOC4
3/17/2003	8:10:00 AM	PROG3	LOC6
3/17/2003	8:20:00 AM	PROG3	LOC6

Prep Header Information:

Prep Start Time: 8:00
Prep Start Date: 3/18/2003
Prep Comp Time: 12:00
Prep Comp Date: 3/18/2003
Prep Tech No: 104

Standards:

LFB 200.7
LFB 200.8
LFB

Add to Standards List

Microsoft Access - [LIMS] Cop... Mo... 11:06 AM

Microsoft Access - [LIMS Analyze Samples Menu]

COMPANY NAME
LIMS

ANALYZE SAMPLES MENU

- Herbicides
- Metals, Solid
- MO CT Macroinvertebrates
- MO Macroinvertebrates
- Minerals**
- Minerals, Solid
- Pesticides 608
- Pesticides 6270
- Pesticides OP
- Pesticides Solid
- Phytoplankton
- PONAR CT Macroinvertebrates
- PONAR Macroinvertebrates
- SC1
- SOCS 625
- SOCS 6270
- VOCs 624
- VOCs 6260
- Zoo plankton

Select Group and Press Create Datasheet: Group: Minerals

Create Datasheet

Form View CAPS

Microsoft Access - [Create Datasheet for Group]

CREATE A DATASHEET TO PRINT
Minerals

Samples Waiting:

SampleDate	SampleTime	Program	Location
3/18/2003	8:00:00 AM	PROG2	LOC4
3/18/2003	8:10:00 AM	PROG2	LOC4
3/18/2003	8:20:00 AM	PROG2	LOC4
3/18/2003	8:40:00 AM	PROG2	LOC4
3/18/2003	8:50:00 AM	PROG2	LOC4

Samples for Datasheet:

Cup	SampleDate	SampleTime	Program	Location	SampleID	PrepSH
1	3/18/2003 08:00		PROG2	LOC4	35074-23-11	954
2	3/18/2003 08:10		PROG2	LOC4	35075-6-11	954
3	3/18/2003 08:20		PROG2	LOC4	35077-23-11	954
4	3/18/2003 08:40		PROG2	LOC4	35079-23-11	954
5	3/18/2003 08:50		PROG2	LOC4	35080-23-11	954

Standards:

Blank
Cal VC
CC
IBC
LFB
LFB
PQL
QC Minerals
QC Trace

Add to Standards List

Form View CAPS

Microsoft Access - [DatasheetMineralsPrep : Report]

Minerals

Datasheet No: 4055

Analysis Start Date: / / Analysis Comp Date: / / Analysis Tech No: _____
Analysis Start Time: Analysis Comp Time: Analysis Tech Initial: _____
Run No: _____

Cup	Sample Date / Time	Program	Location	Matrix	Lab ID	Sample ID	Pre Start Date / Time	Prep Comp Date / Time
1			LRB					
2			LFB					
3			PQL					
4			QC Minerals					
5			QC Trace					
6	3/18/2003 08:00	PROG2	LOC4	RW	RE	35074-23-11	3/18/2003 08:00	3/18/2003 12:00
7	3/18/2003 08:10	PROG2	LOC4	RW	EB	35075-6-11	3/18/2003 08:00	3/18/2003 12:00
8	3/18/2003 08:20	PROG2	LOC4	RW	RE	35077-23-11	3/18/2003 08:00	3/18/2003 12:00
9	3/18/2003 08:40	PROG2	LOC4	RW	MS	35079-23-11	3/18/2003 08:00	3/18/2003 12:00
10	3/18/2003 08:50	PROG2	LOC4	RW	SR	35080-23-11	3/18/2003 08:00	3/18/2003 12:00
11			Blank					
12			CC					

Page: 1/1 CAPS

Microsoft Access - [LIMS Sample Process Menu]

COMPANY NAME
LIMS

Datasheet Selection - Coordinator

Select a Datasheet Number and Press Get Datasheet:

Datasheet Number: 4055

Single Parm
Multi Parm

With Data
Without Data

Get Datasheet

Data Entry
QA Approval

Form View

Microsoft Access - [Modify Datasheet for Group]

MODIFY A DATASHEET TO PRINT
Minerals / Datasheet No: 4055

Samples Waiting:

SampleDate	SampleTime	Program	Location
			LRB
			LFB
			PQL
			QC Minerals
			QC Trace
08/2	LOC4	35074-23-11	954
08/2	LOC4	35075-6-11	954
08/2	LOC4	35077-23-11	954
08/2	LOC4	35079-23-11	954
08/2	LOC4	35080-23-11	954
			Blank
			CC

Analysis Header Information for Group:

Analysis Start Time: 8:00
Analysis Start Date: 3/18/2003
Analysis Comp Time: 12:00
Analysis Comp Date: 3/18/2003
Analysis Tech No: 115

Standards:

Blank
Cal VC
CC
IBC
LFB
LFB
PQL
QC Minerals
QC Trace

Add to Standards List

View Detail Import Data Enter Data Update

Microsoft Access - [LIMS] Demo... LIMS Sa... LIMS An... Modify... 11:13 AM

LIMS Sample Application

Microsoft Access - [Coordinator Datasheet View for Group]

COORDINATOR DATASHEET VIEW

Minerals / Datasheet No: 4055 /

Samples for Datasheet:

Slp	SampleDate	SampleTime	Program	Location	SampleID	PrepShPrp
1			URB	--		
2			URB	--		
3			PQL	--		
4			QC Minerals	--		
5			QC Trace	--		
6	3/18/2003	8:00:00 AM	PROG2	LOC4	35074-23-11	554 1
7	3/18/2003	8:10:00 AM	PROG2	LOC4	35076-6-11	554 2
8	3/18/2003	8:20:00 AM	PROG2	LOC4	35077-23-11	554 3
9	3/18/2003	8:40:00 AM	PROG2	LOC4	35079-23-11	554 4
10	3/18/2003	8:50:00 AM	PROG2	LOC4	35080-23-11	554 5
11			Blank	--		
12			CC	--		

View Detail
Send Back to Analyst
Initial Approval Resend Approval
Data Import: Yes No
Changes to Values: Yes No
Approve

Microsoft Access - [Data Entry Menu]

DATA ENTRY

Select Data Entry Type and Press Enter Data

Entry by Datasheet Number
 Entry by LabNo Prefix (Field Params Only)
 Entry by Parameter/LabNo Prefix
 Entry by Samples Sent Out
 Entry by Samples Sent Out By Parameter

Enter Data

Single Parameter Multi Parameter
 Datasheet Number: [4055]
 Parameter: [4055]

Microsoft Access - [Data Entry Menu]

DATA ENTRY

Select Data Entry Type and Press Enter Data

Entry by Datasheet Number
 Entry by LabNo Prefix (Field Params Only)
 Entry by Parameter/LabNo Prefix
 Entry by Samples Sent Out
 Entry by Samples Sent Out By Parameter

Enter Data

Single Parameter Multi Parameter
 Datasheet Number: [4055]
 Parameter: [4055]

Microsoft Access - [Datasheet View]

Datasheet View

Data Sheet Number: 4055

Remove Record

Param #	Sample Date	Sample Time	Program Name	Location	Lab ID	Lab No	Sample ID	Sym 1	Value	Sym 2	Sample Comments
815			URB								
815			URB								
815			PQL								
815			QC Minerals								
815			QC Trace								
815	3/18/2003	8:00	PROG2	LOC4	RE	35074	35074-23-11				
815	3/18/2003	8:10	PROG2	LOC4	RE	35076	35076-6-11				
815	3/18/2003	8:20	PROG2	LOC4	RE	35077	35077-23-11				
815	3/18/2003	8:40	PROG2	LOC4	MS	35079	35079-23-11				
815	3/18/2003	8:50	PROG2	LOC4	SR	35080	35080-23-11				
815			Blank								
815			CC								

Sample Comments: [] Detail Comments: [] Update

Record: 1 of 12