



Ohio Legislative Children's Caucus

*Learning, connecting, and problem-solving
together. Our children are counting on us.*

The Budget and the State of Children in Ohio

Opening Remarks: Rep. Gayle Manning



*Ohio Legislative
Children's Caucus
Co-Vice Chair*



Insufficient Infant-Toddler Child Care Costs Ohio \$3.85 Billion Annually

Don Rankey, CEO, HomeLife Companies, Delaware County Treasurer
April 15, 2024

ReadyNation survey of parents

- Nationally representative sample of 408+ parents of children ages birth to three
- Parents were asked how child care challenges impacted their work across four dimensions:
 - Productivity
 - Time at work
 - Disruptions
 - Career pathways

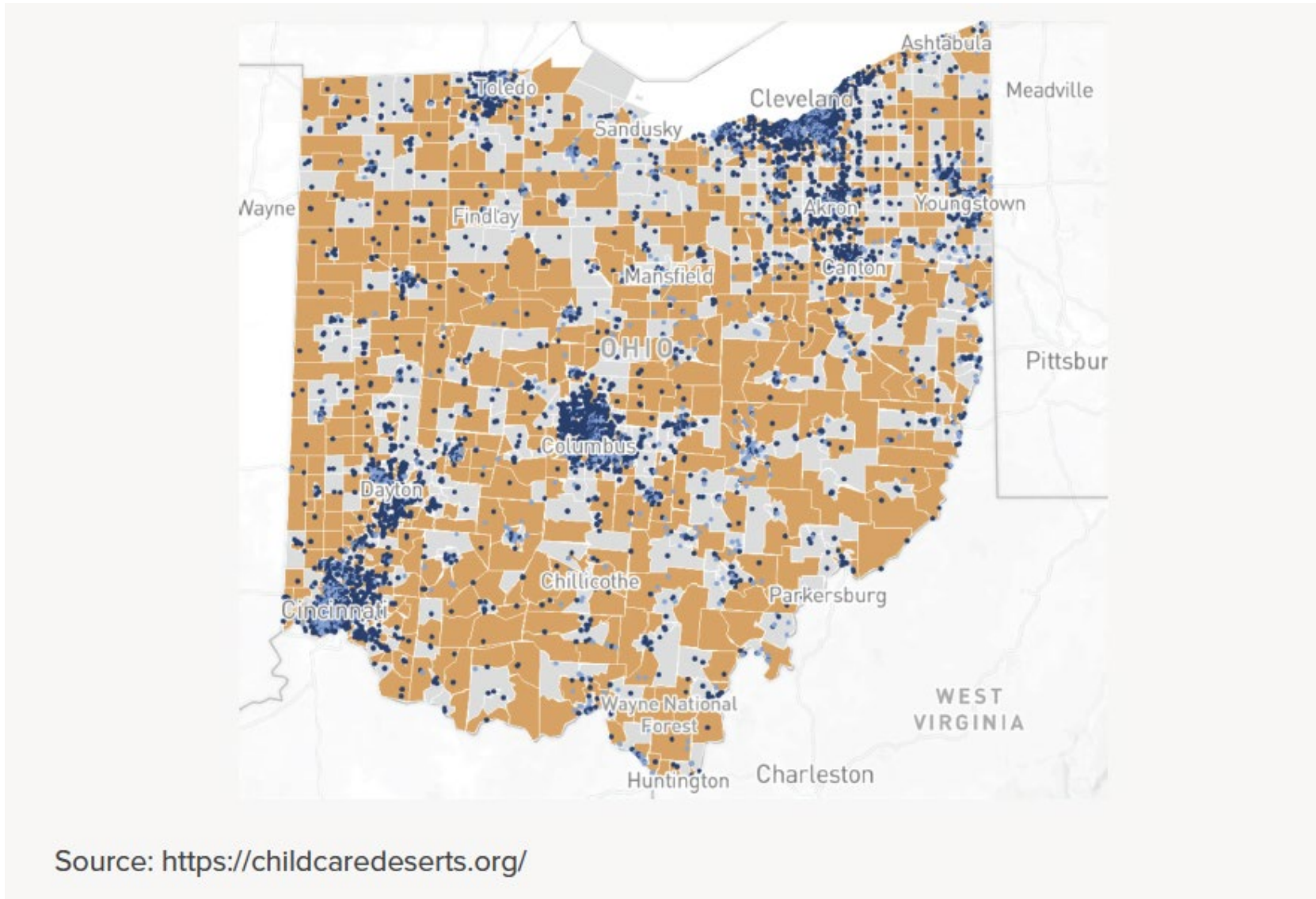


Ohio parents of infants and toddlers need child care

- **395,000 children in Ohio are under the age of three**
 - 63 percent of these children have mothers in the workforce.
- **87 percent of Ohio workers cite lack of child care as a primary barrier to employment**
 - 59 percent had difficulty finding access to that is affordable.
 - 55 percent had difficulty finding care that is high-quality.
- **Affordable care**
 - Ohio averages \$11,438 for Infant care in a center per year.
 - This represents 11 percent of the median annual income of a married-couple family in Ohio.



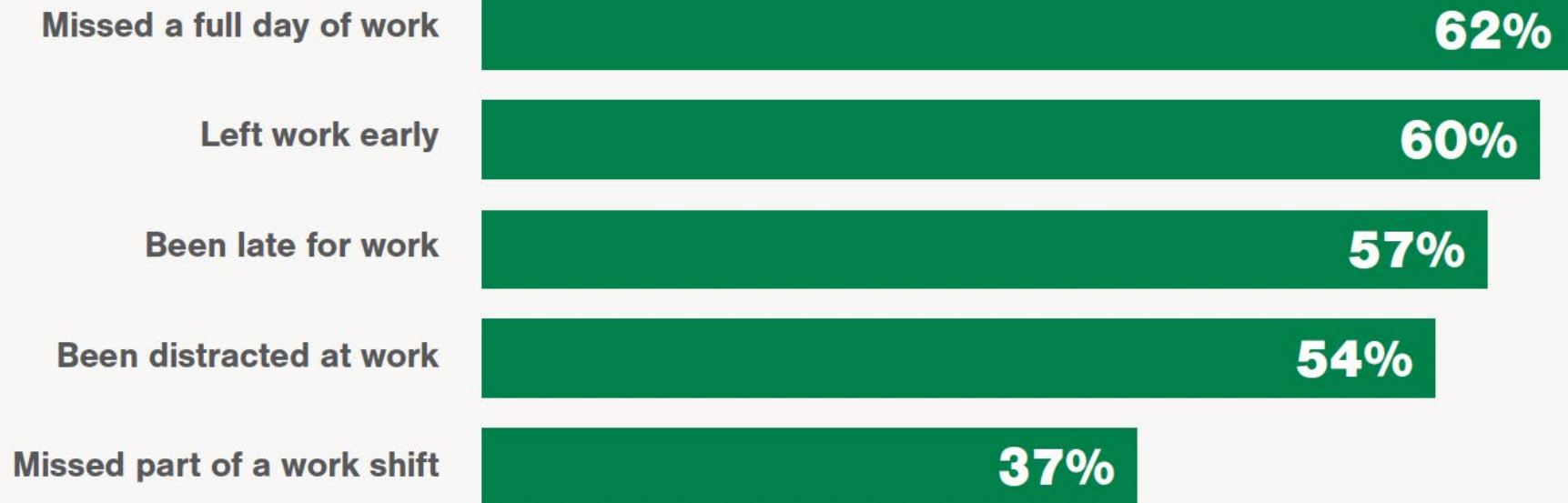
39 percent of Ohio residents live in a child care desert (shown in orange)



Lower productivity

Lower effort and productivity at work

Due to child care problems, over the past three months, have you:



Less time at work

Less time at work

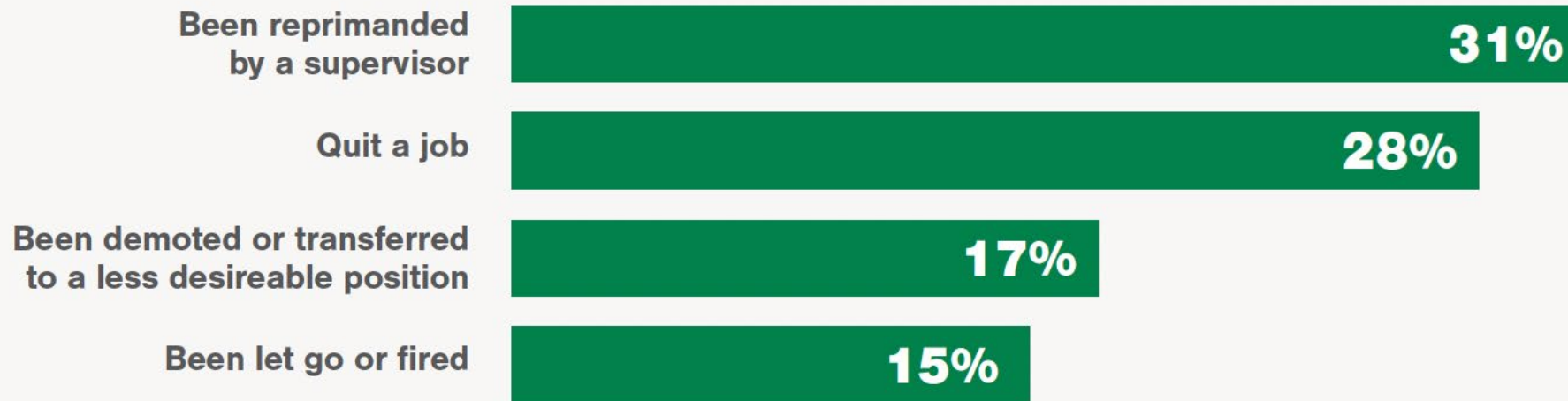
As a result of child care problems, have you ever:



Work disruptions

Work disruptions

As a result of child care problems, have you ever:

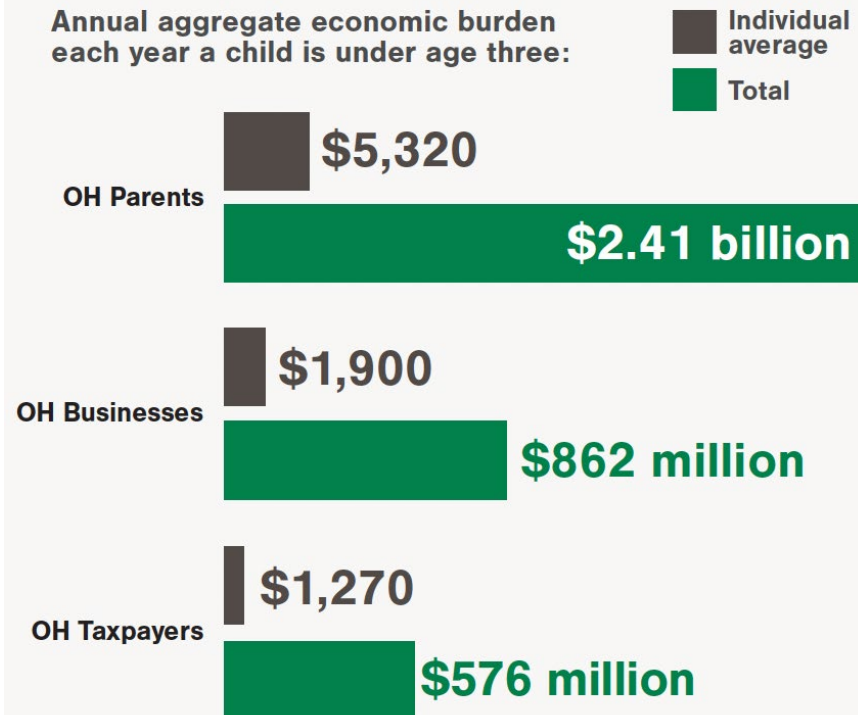


Impacts on parents, employers, and taxpayers

The economic impacts of insufficient child care on parents, employers, and taxpayers in Ohio

Insufficient care for children under the age of 3 costs individuals, businesses, and the state billions of dollars each year.

Annual aggregate economic burden each year a child is under age three:



How child care problems hurt the economy

Working Parents	Businesses	Taxpayers
Lost earnings now from lower productivity and labor force attachment	Lost revenue now from lower output	Lost revenue now from lower incomes
Extra costs of job search	Extra costs due to absences, disruptions, hiring	Smaller federal and state tax base and revenue
Lost earnings in the future from less work experience and fewer skills	Lost revenue in the future due to lower workforce capital	Lost revenue in the future due to weaker economic growth



What does this all mean?

Insufficient Infant-Toddler Child Care Costs Ohio \$3.85 Billion Annually

To grow the economy, invest in child care





Cyndy Rees

ReadyNation OH State

Director

crees@readynation.org

 [Ready_Nation](#)


 [ReadyNation](#)

StrongNation.org/ReadyNation



Brain Basics: The Case for Starting Early

Sarah Lytle, PhD

 @playfullearnng
www.playfullearninglandscapes.com





**High quality
experiences in the
first years of life are
essential for children's
brain development.”**

– Sarah Lytle, Ph.D.

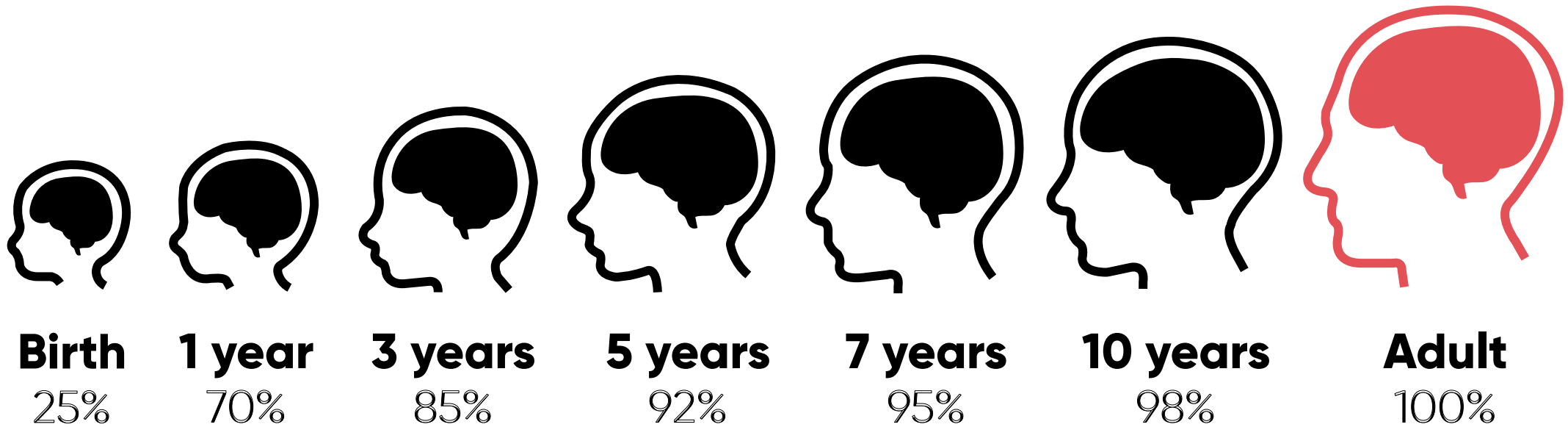
Director of Outreach, Institute for
Learning & Brain Sciences

StrongNation.org/BrainScience

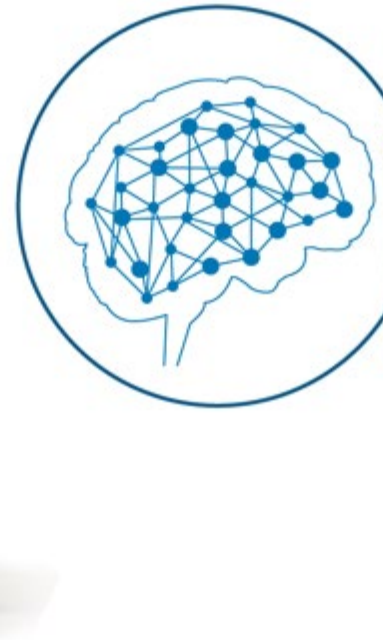


**StrongNation.org
/ReadyNation**

The Growing Brain



The Growing Brain



Blooming



Pruning

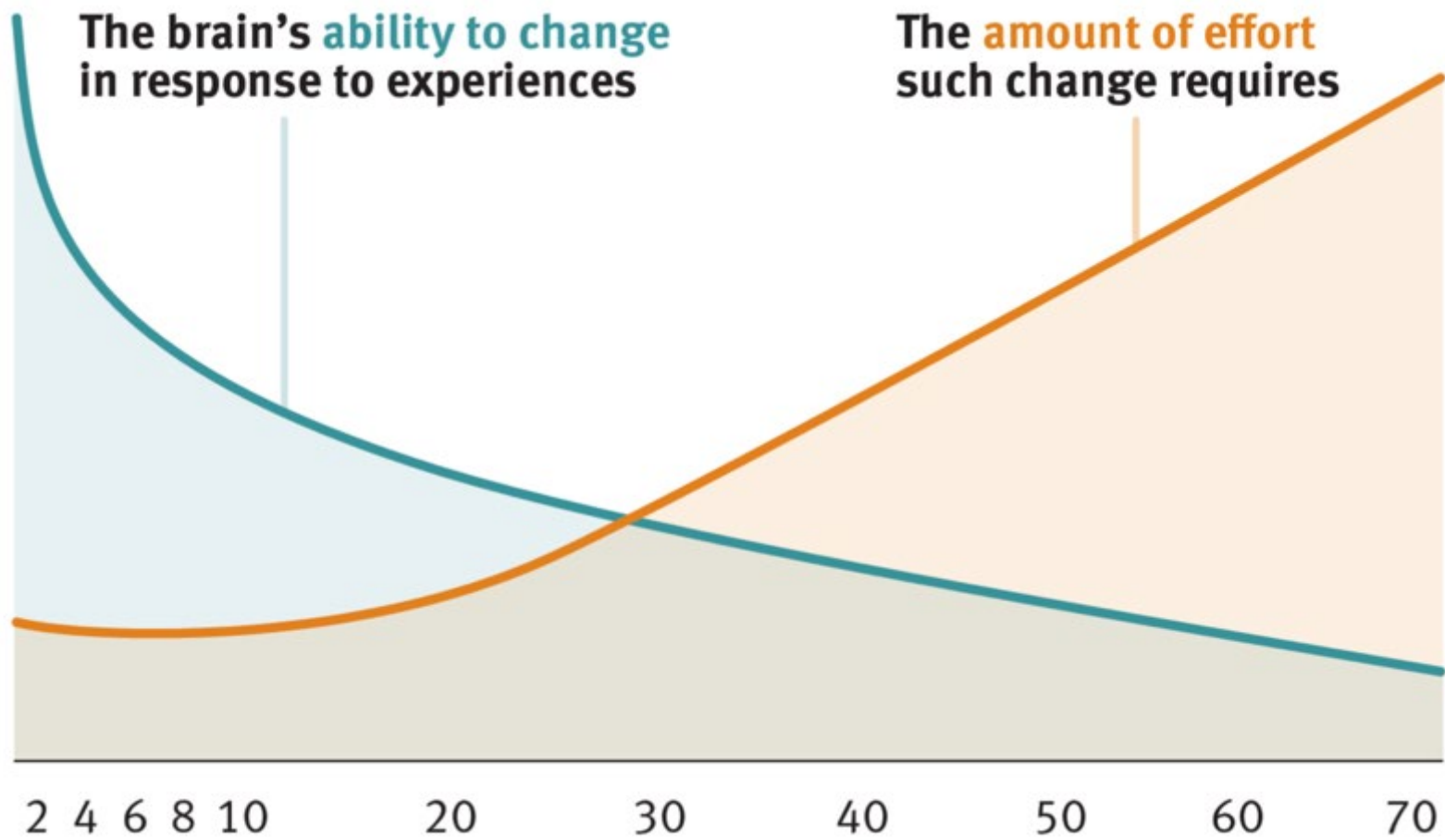


Thriving

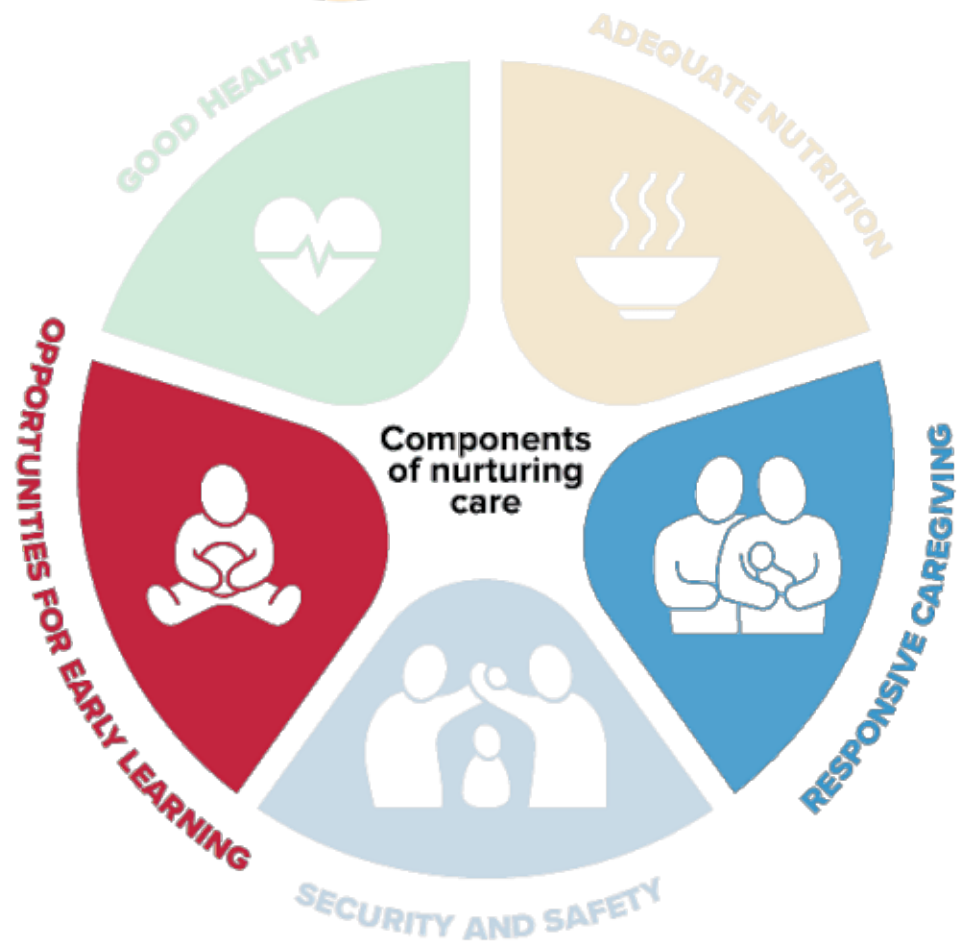




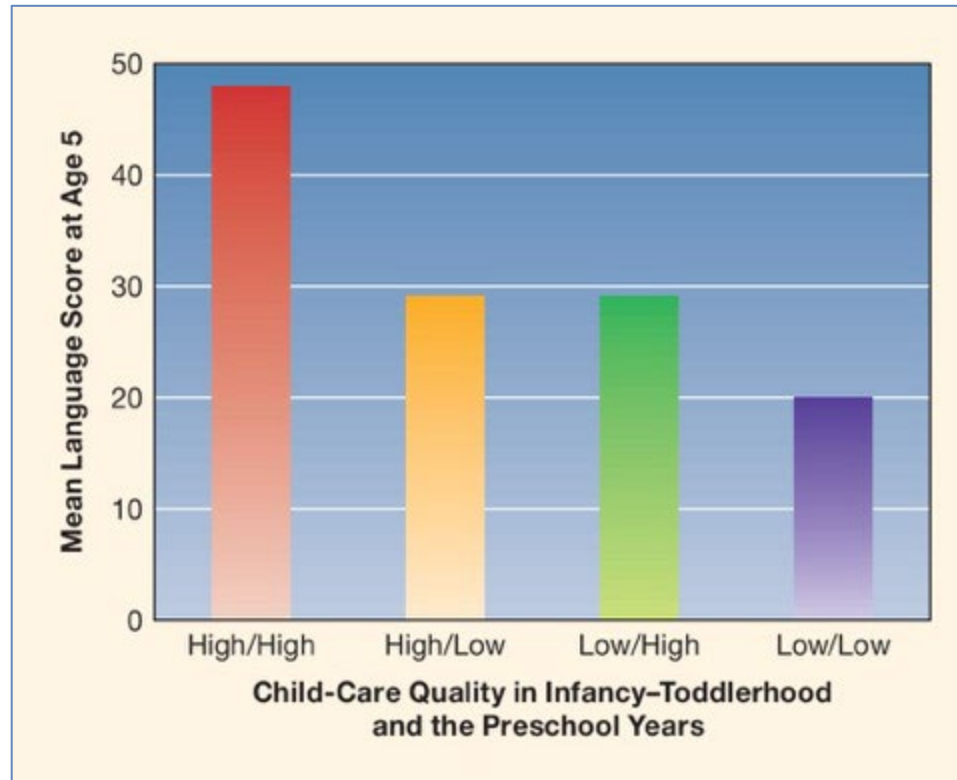
Universalist → Specialist



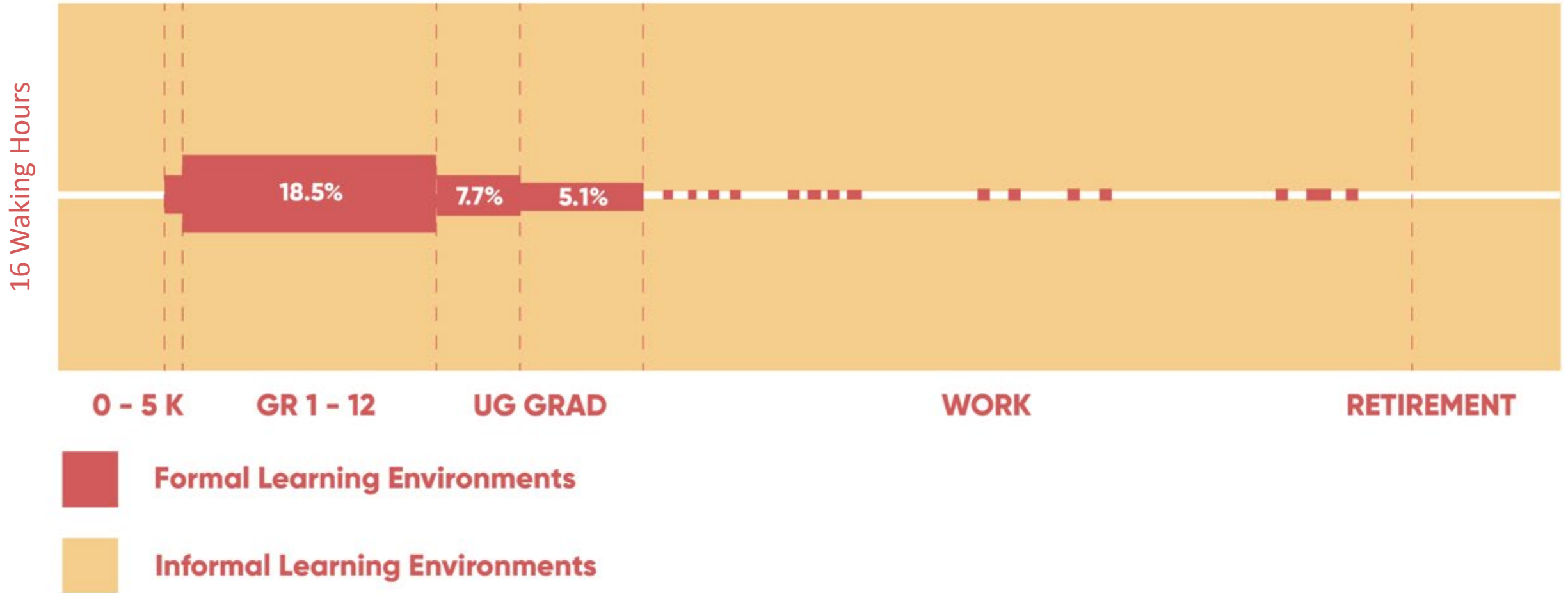


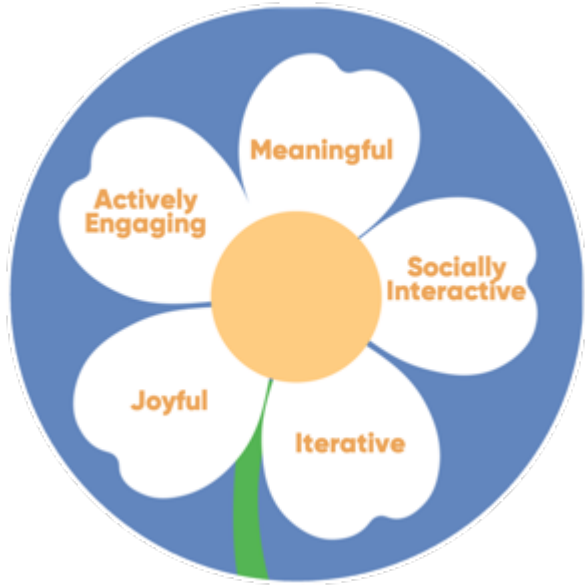


Quality Care Matters



Where are children?





HOW Children Learn

+



WHAT Children Learn

+



Community Values

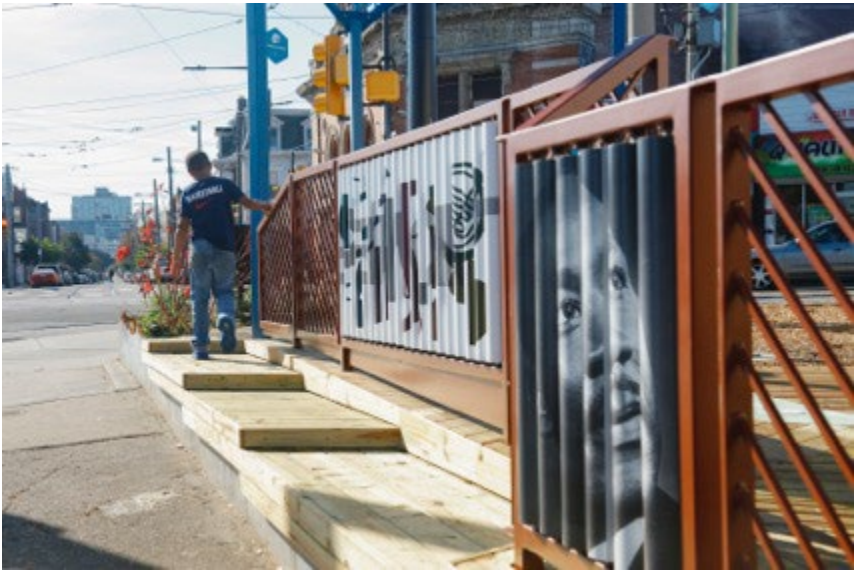
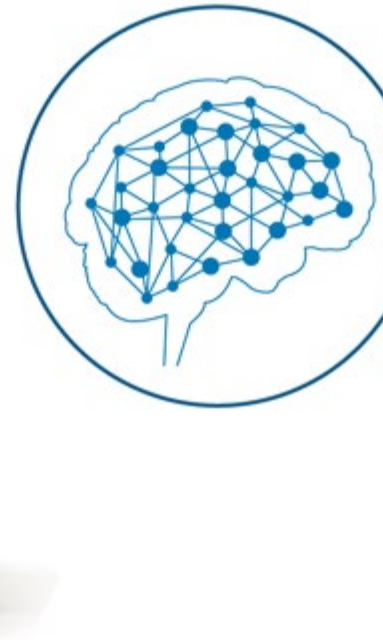


Photo Credit: Sahar Coston-Hardy

The Growing Brain





Who we are

A nonprofit that brings together educators, learning scientists, community organizers, and architects to create playful learning spaces

What we do

Coaching and Design Review

Technical Assistance and Design

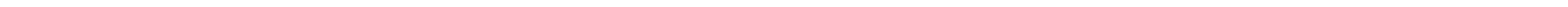
Training & Webinars

Science Dissemination





ROAD TO A STRONG FUTURE



Mission

Our mission is to support and ensure high-quality education—from preschool to postsecondary and trade school—for every young person in the city of Toledo, in order to create generational economic change for the betterment of our families and community.



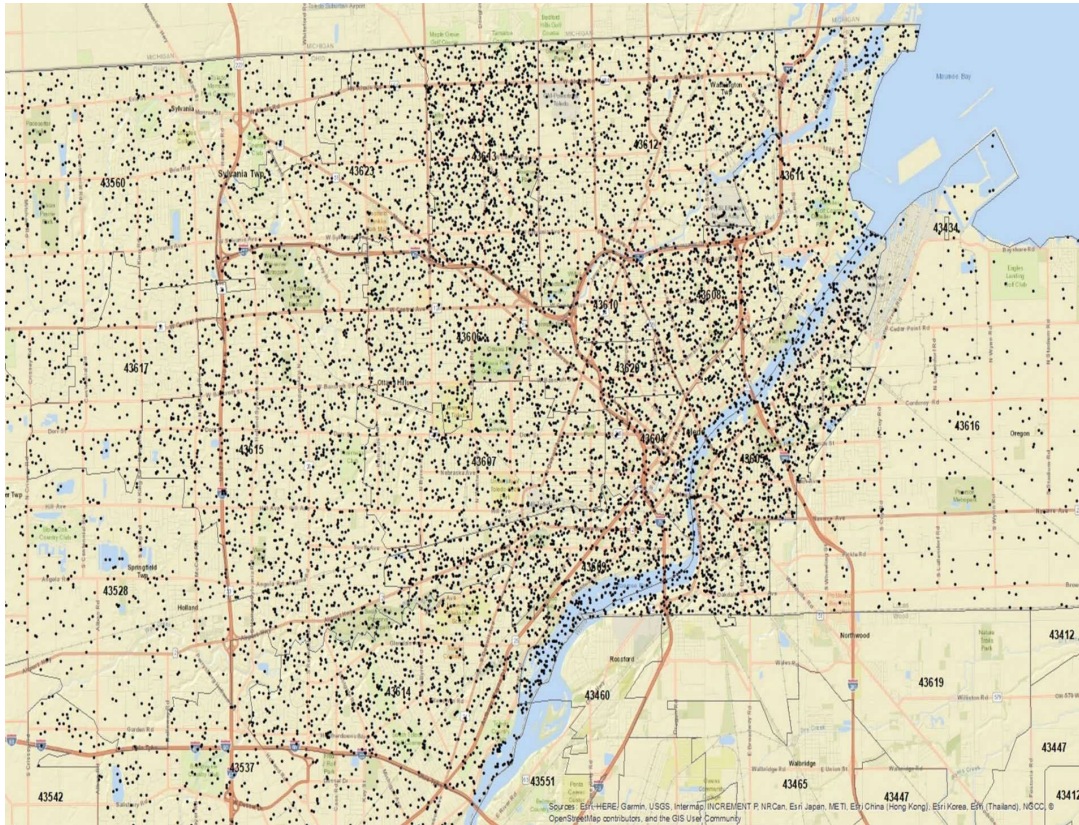
HOPE
TOLEDO

What We Believe

- **Every person**, regardless of background, income, age or ability should have access to affordable, high-quality education near them
- A **strong start** in preschool makes the difference in the success experienced later in life
- Students should have the opportunity to **graduate debt-free** from a postsecondary program of their choice
- A **two-generation approach** to postsecondary education is a whole family “recipe” for long-term success

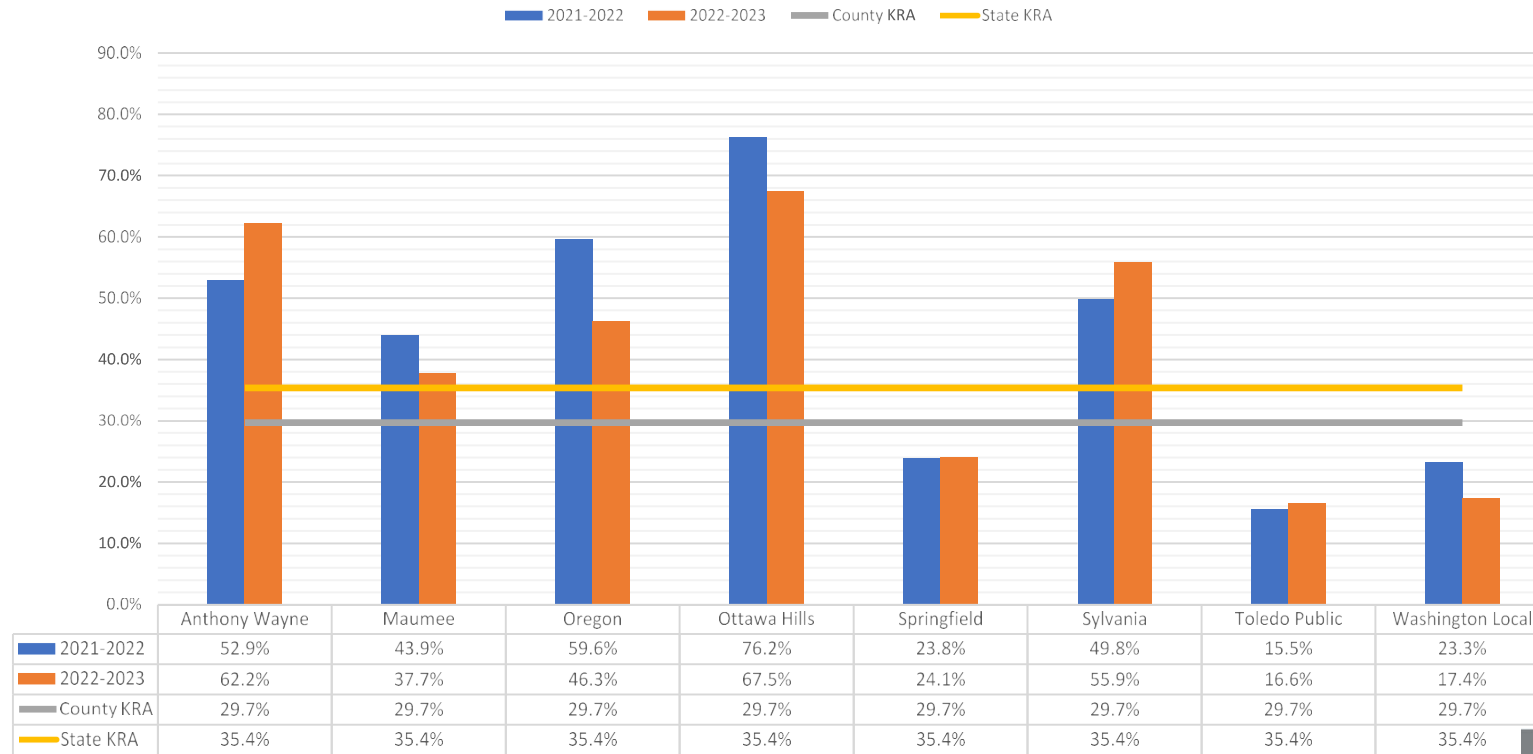


Data



- Each dot represents one 3 or 4 year old
- Young children are spread throughout the city, with slightly lower density in the eastern portion
- Need exists throughout the city and is not concentrated in one area

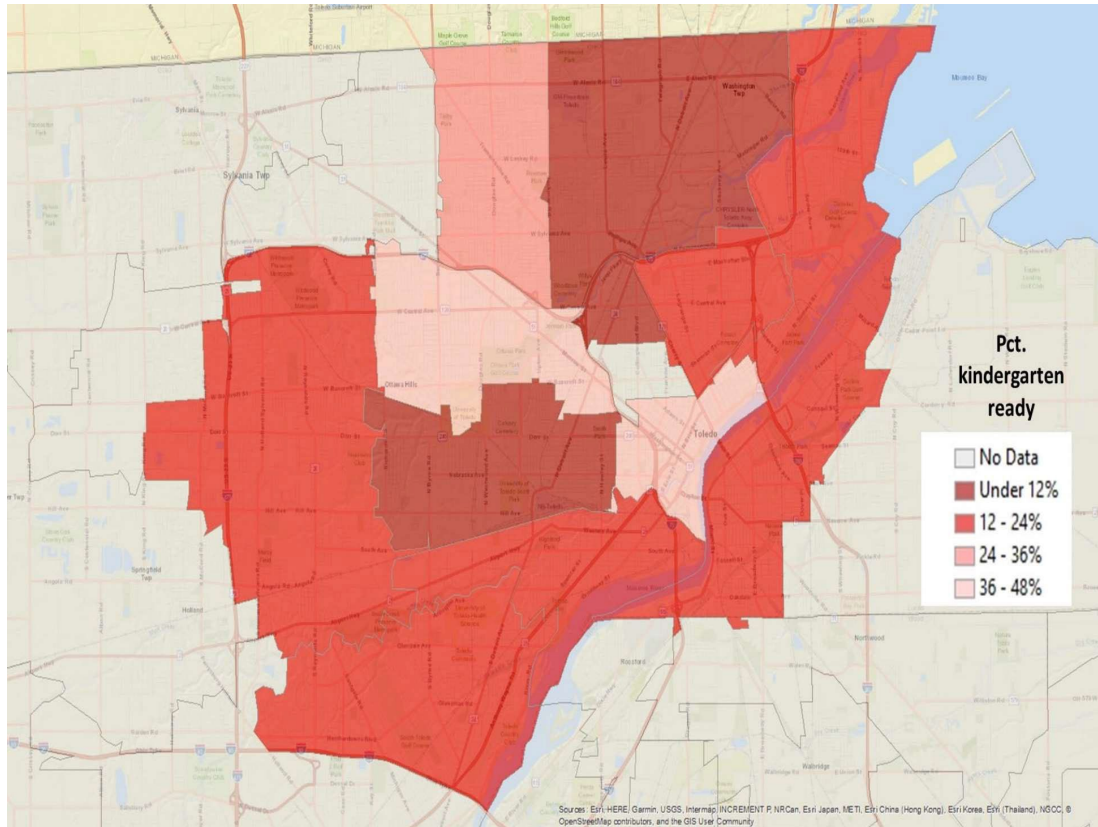
Identifying the Need - KRA



Per Ohio Department of Education for Toledo Public Schools – by year.

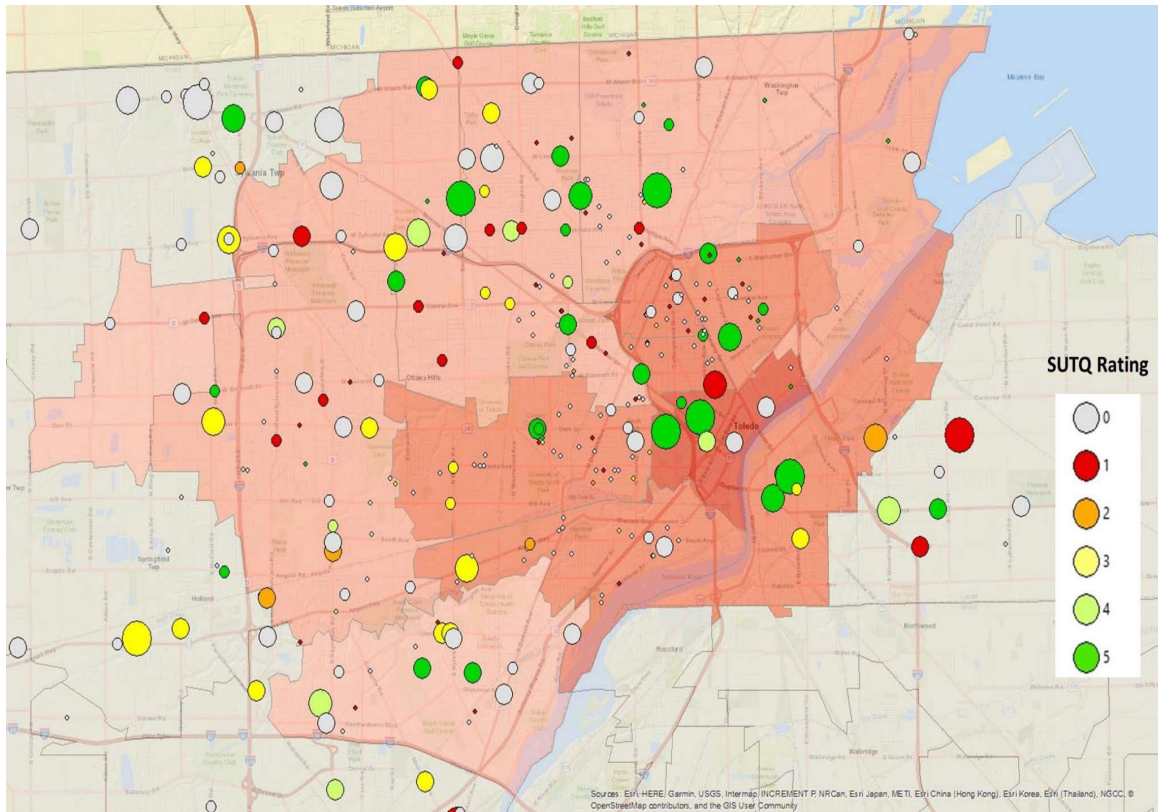


Identifying the Need - KRA



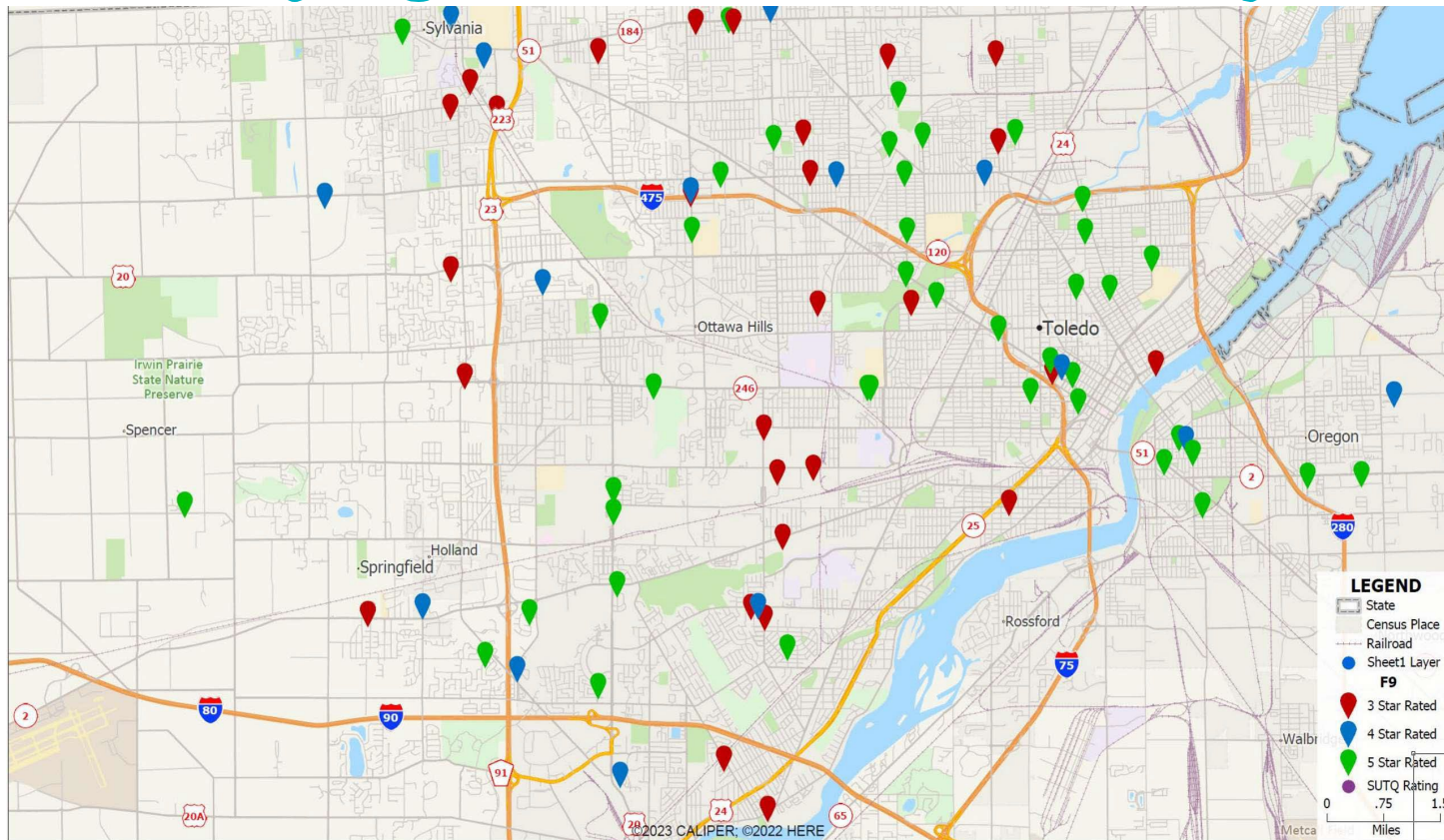
- Darker areas indicate lower scores/higher need
- While downtown area has high poverty rates, the TPS preschool there has higher KRA scores
- Need exists across the county, providing more justification for citywide approach

Identifying the Need – Availability



- Larger circles indicate greater licensed capacity
- The highest-need area near downtown also has a concentration of high quality providers
- The greatest need for quality providers is in the east/southeast

Identifying the Need – Availability



Cost of Early Education and Childcare



Child care challenges facing parents

Statistics on child care in Ohio

\$10,000 to \$15,000

Cost of high-quality, full-time child care annually

70%

Percent of children with all available parents in workforce

43.8%

Percent of income single parent family pays for center-based infant child care

50,300

Average number of children receiving child care assistance each month

11%

Percent of income two-parent family pays for center-based infant child care

\$12.24

Median hourly pay for child care worker (national)

22%

Percent of children birth to age 5 in families with incomes below poverty level

Sources: 2020 U.S. Bureau of Labor Statistics, Preschool Promise, National Association for the Education of Young Children and ChildCare Aware of America



ALEXIS LARSEN / CONTRIBUTING ARTIST
LYNN HILL SEY / REPORTER

Lack of investment in PN-5....

➔ ... impacts Ohio's ability to attract new business investment across the state.

Right now, Ohio parents are forced to choose between taking on full-time, full-year work or stay un- or under-employed because they cannot afford the high cost of child care.

“Ohio businesses and workers are facing long-simmering challenges—and finding reliable, affordable, and safe child care is one of the most pressing. The business community can and will step forward to help, but we need additional federal investment as well. No Ohio worker should have to choose between family and work.”

~ Steve Stivers
President & CEO, Ohio Chamber of Commerce

OHIO'S ECONOMY
LOSES approx.

\$3.9 BILLION PER YEAR

due to child care issues.



Nationally, the annual cost is **\$122 BILLION** in lost earnings, productivity, and revenue.



Identifying the Need

- 63% of Ohio children birth to 3 (almost 400,000) have moms in the workforce
- In Lucas County nearly 70% of two parent homes had one or both parent working; in homes with only one parent that number is 55%
- A single adult with one child is only making 38% of the “living wage” (\$22/hr)



Business executives building a skilled workforce by promoting solutions that prepare children to succeed in education, work, and life

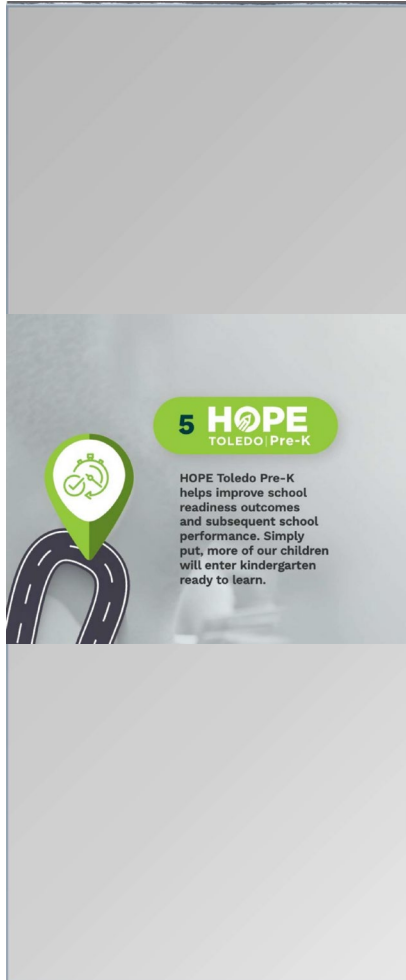




HOPE Toledo Pre-K

A Comprehensive, Community-Based
Approach to Early Childcare and Education
in Toledo

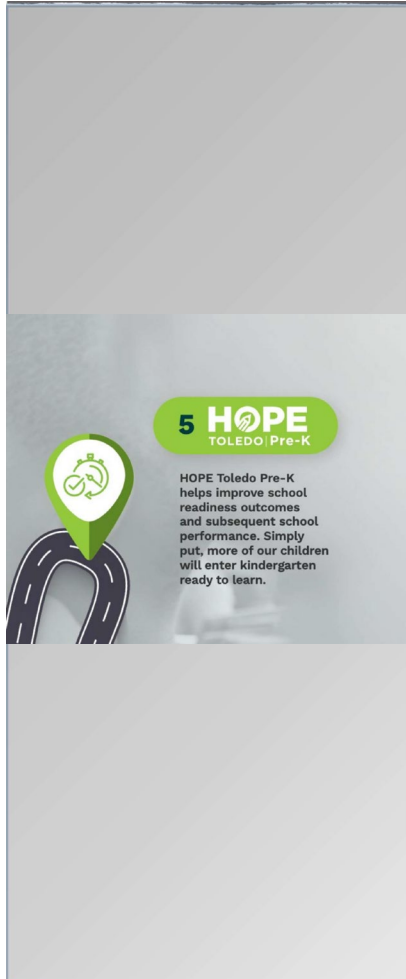




GOAL

Ensure kindergarten readiness and subsequent successful school performance of Toledo children



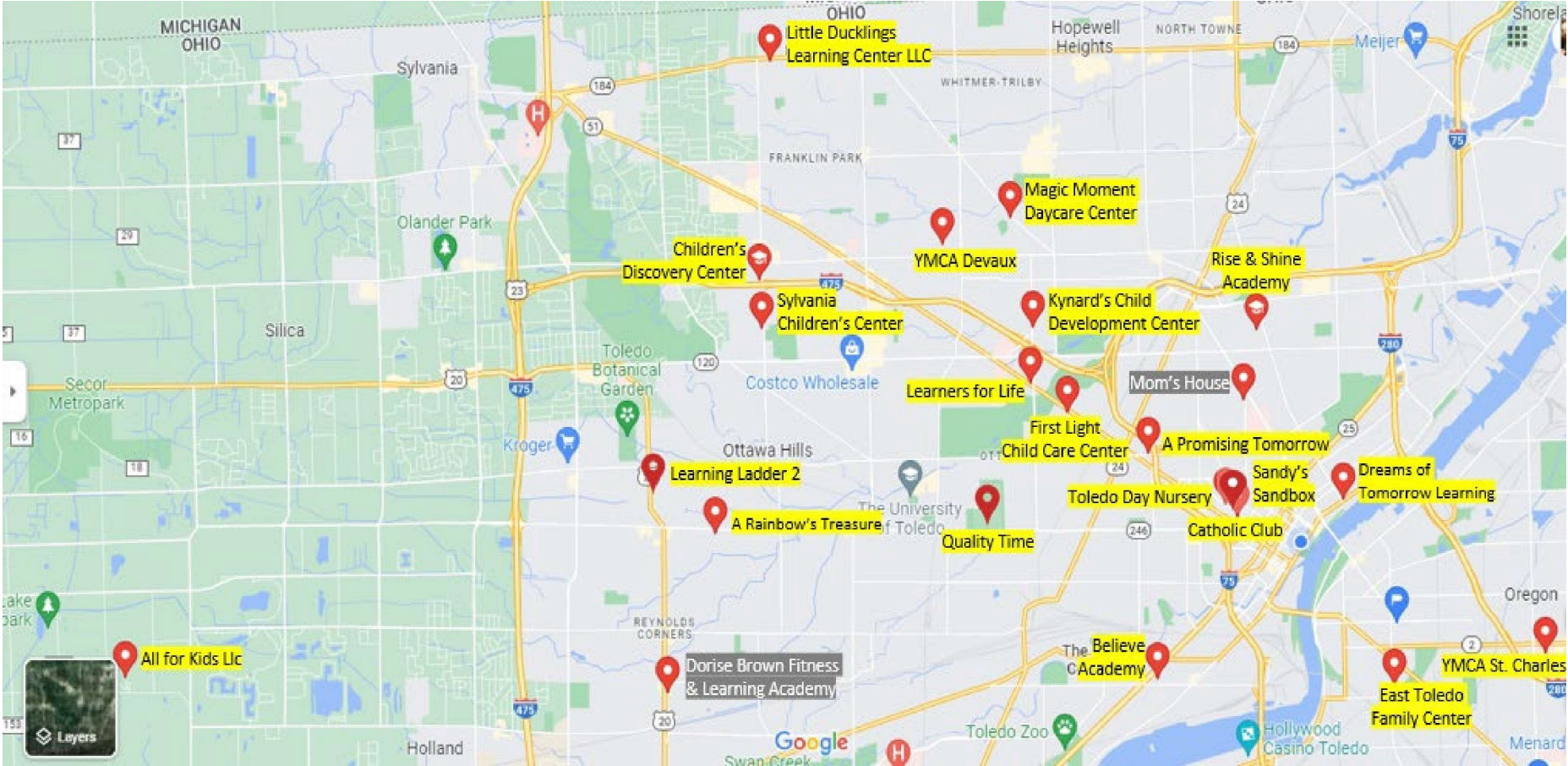


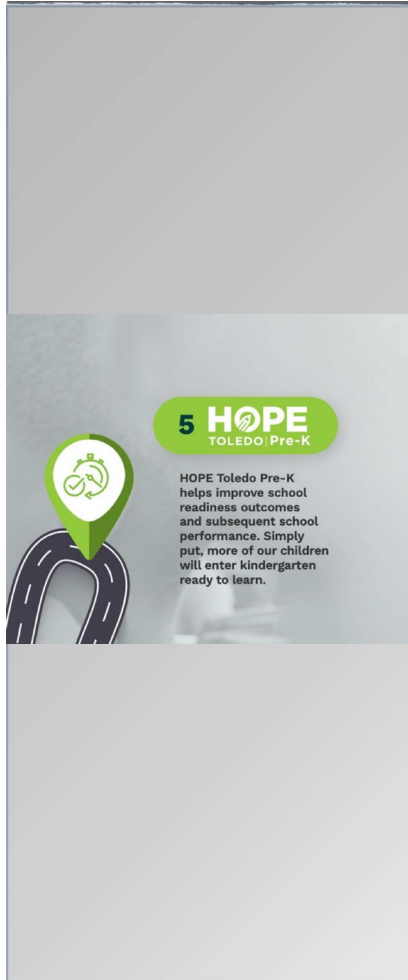
Implementation – Pre-K Blueprint

- Reduced Ratios (1:10)
- Culturally relevant curriculum-rich programming (full day; full year)
- Teacher qualifications
- Teacher compensation
- Teacher development and coaching
- Parent and family engagement
- Business coaching, development and technical assistance (i.e – Shared Service)
- Pre-K to Kindergarten transition



HOPE Pre-K Demonstration – Year 2





HOPE Pre-K: By the Numbers

\$2,500,000

27

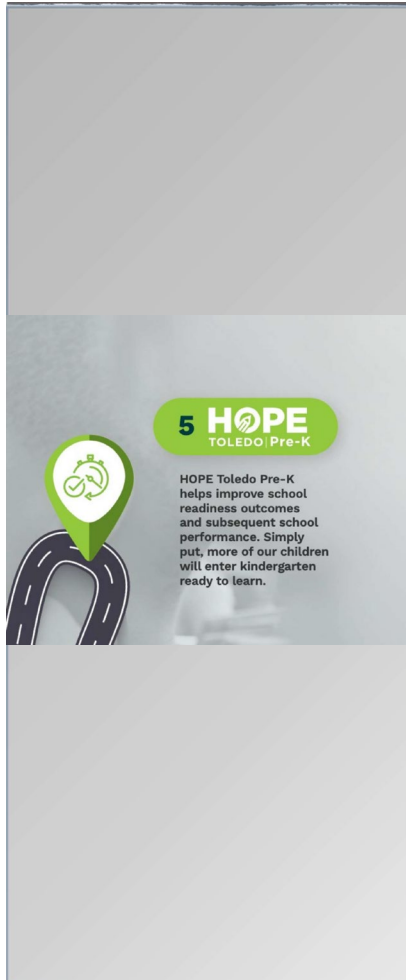
900

30%

800

550





HOPE Pre-K: By the Numbers

- 30% of children entering Kindergarten from a HOPE Toledo Pre-K tested at the “demonstrating level on the KRA
- Leveraged \$2,500,000 in funds during Year 2 of project to partner providers
- 27 Partner and Affiliate Providers
- 550 children served in years 1 and 2
- 900 touchpoints with families, educators and children
- Over 800 hours with classroom teachers in professional development and support

Thank you!



Connect with us!



www.hope-toledo.org



John@hope-toledo.org

Info@hope-toledo.org

Follow us on social media

LinkedIn



YouTube



Tik Tok

Questions & Answers

*Moderated by Molly Vincent,
Legislative Aide for Rep. Manning*

*For legislators, staff, and agency
representatives, please feel free to
unmute yourselves to ask questions
or share feedback.*

*For all other participants, please
use the chat or Q&A feature, and
we will do our best to answer in
the time allotted.*



*Thank you for joining
today's webinar!*

For more information on upcoming
Ohio Legislative Children's Caucus
webinars and meetings, please
contact:

Kelly Vyzral,
kvyzral@childrensdefense.org

