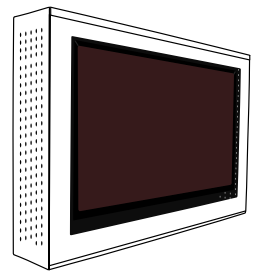
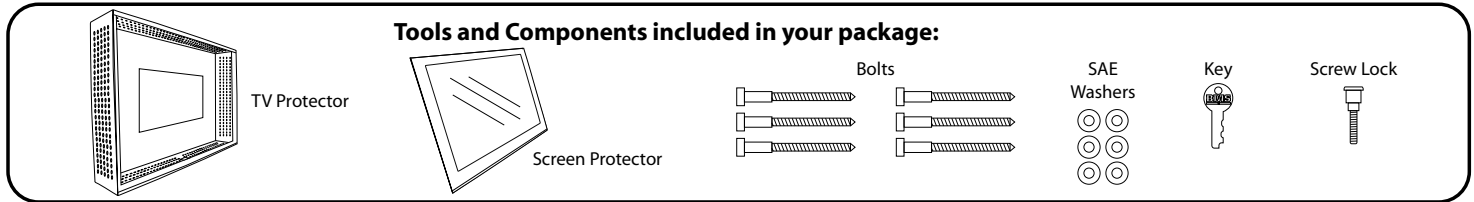


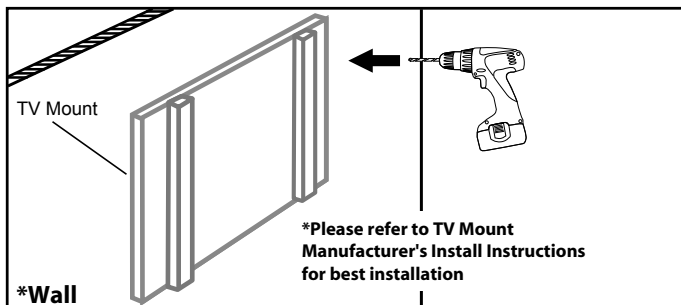
TV Protector Mount Installation Instructions



Parts Included

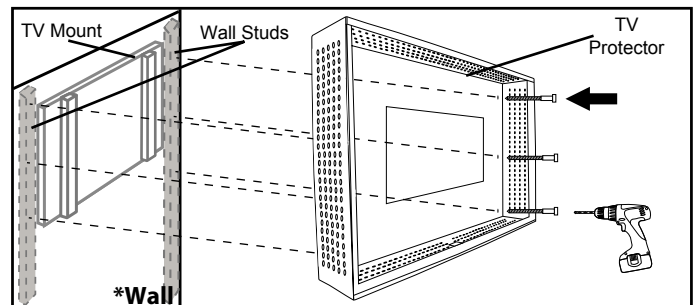


1 Attaching TV Mount to Wall



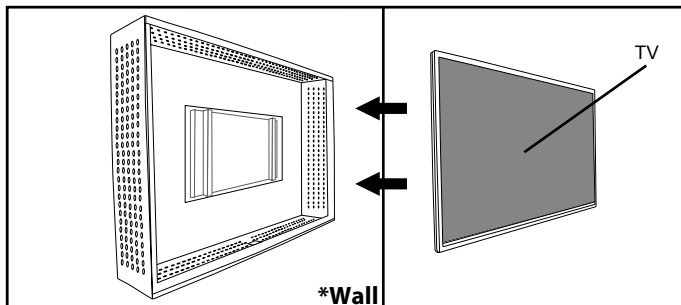
1. Attach TV Mount to wall following mount manufacturing installation instructions. Keep in mind that the TV Protector needs to be attached to at least two wall studs.

2 Attaching Protector to Wall



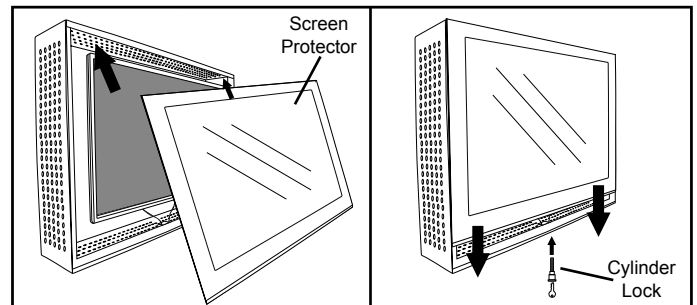
1. Guide TV Protector through TV mount using it as reference for positioning.
 2. Drill holes where bolts will be attached and screw in bolts.

3 Attaching TV to TV Mount



1. Once TV Protector is in place refer to TV mounts manufacturer's installation guide for TV mounting instructions.

2 Attaching Screen Protector



1. Once TV is Mounted place screen protector over TV protector and slide into place.
 2. Place Cylinder Lock into housing and turn clockwise to secure. Do not over tighten.



Important Warnings and Cautions

- Warning** - Failure to read, understand and follow instructions can result in serious injury, damage to equipment or voiding equipment warranty.
- Warning** - Improper installation can result in serious personal injury or death. Ensure that the mounting surface can support a weight factor of four times the combined total weight of the equipment and the mount. If not, reinforcement of the mounting surface will be necessary before installing the mount.
- Warning** - It is the installer's responsibility to make sure that the mounting surface and the subsurface is free and clear of all electrical wires, plumbing and gas pipes. Failure to provide adequate clearance of all electrical wires and pipes can result in serious personal injury or death.
- Warning** - Mount and equipment exceeding a combined weight of 50 lbs can result in damage to the support structure, the mount, the equipment and may cause personal injury.
- Warning** - Business Machine Security, Inc. does not warrant its mounts against damage caused by the end use of its mounts for any purpose other than for the purpose for which it has been designed.
- Warning** - Business Machine Security, Inc. is not responsible for damage, or injury that may result in the use of any unauthorized modifications or attachment.
- Warning** - Proper safety gear (Goggles, Glasses & Gloves) and practices should be adhered to at all times throughout the installation process.
- Warning** - Do not install the mount near any heat source or air conditioning vent which may be prone to vibration.
- Warning** - Maximum load capacity 50 lbs.
- Warning** - Do not expose to extreme temperatures.

