



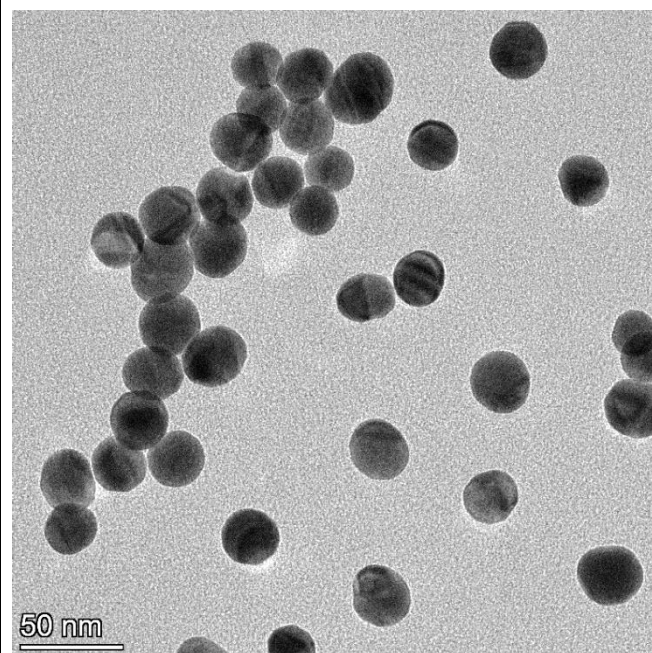
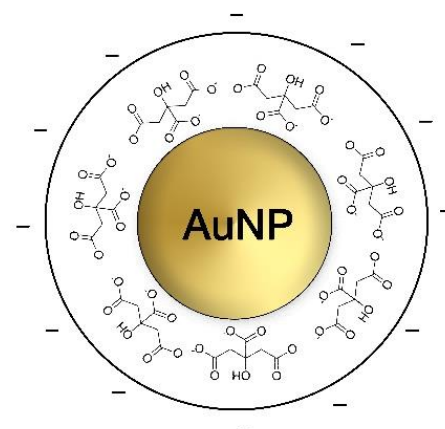
NANOBRAND

NB-GSPLF-30-CIT-20

30nm Gold Nano-spheres "Lateral-Flow-Easy"

**Diameter 30nm,
OD=20,
citrate-coated**

Parameter	Value	Specification
Diameter (TEM):	29.74 ± 1.06 nm	25.5 – 34.5 nm
Coefficient of polydispersity:	3.57%	<15%
Optical density (OD):	20.0	19.5 – 20.5
Mass of single particle:	2.658E-13 mg	As reported
Surface of single particle:	2778.6 nm ²	As reported
Volume of single particle:	13773 nm ³	As reported
Particles concentration:	3.11E+12 particles/ml	As reported
Molar particles concentration:	5.19 nM	As reported
Surface area (TEM):	10.45 m ² /g	As reported
Surface to volume ratio:	0.202 nm ⁻¹	As reported
Mass of gold:	827.53 µg/ml	As reported
Hydrodynamic diameter (DLS):	35.92 nm	30 – 40 nm
Zeta-potential:	-39.4 mV	<20 mV
pH of the solution:	6.2	5.5 – 6.5
Particle surface:	Citrate	Citrate
Solvent:	Milli-Q water (18.1 MΩ-cm)	Milli-Q water (18.1 MΩ-cm)



Instrumentation used for characterization

Diameter and size distribution:	Transmission Electron Microscope Thermo Scientific TALOS F200X
Mass concentration:	PerkinElmer NexION 2000P+ ICP-MS
Spectral properties:	PerkinElmer Lambda 365+ UV-Visible Spectrophotometer
Hydrodynamic Diameter and Zeta Potential:	Malvern Zetasizer

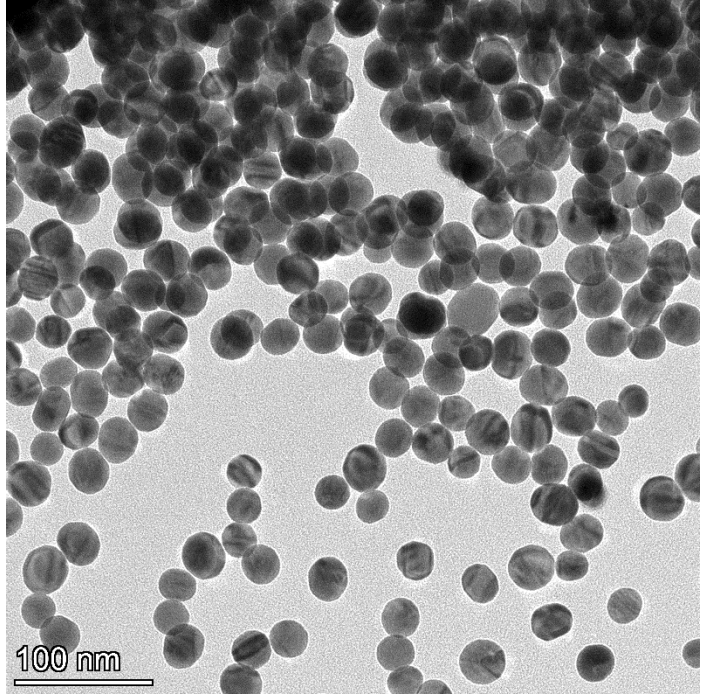
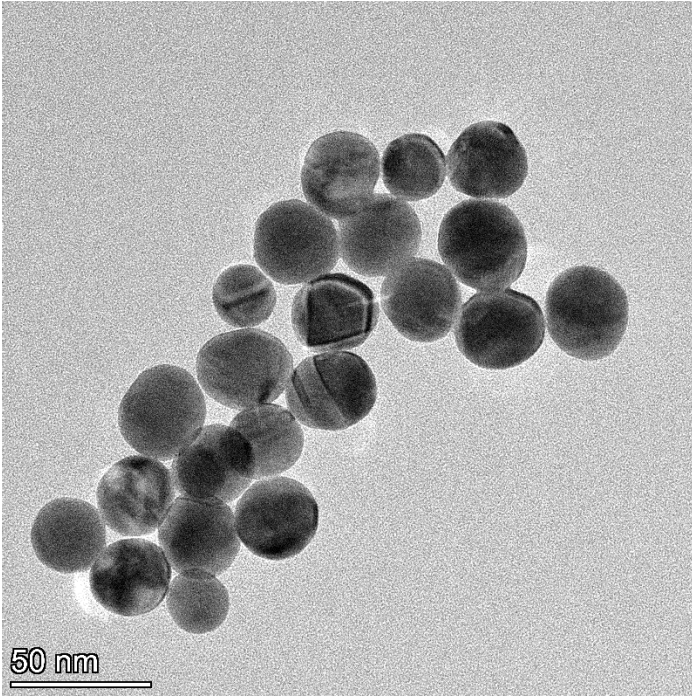
Shake and measure pH before use. Store at 4-25°C away from light. DO NOT FREEZE



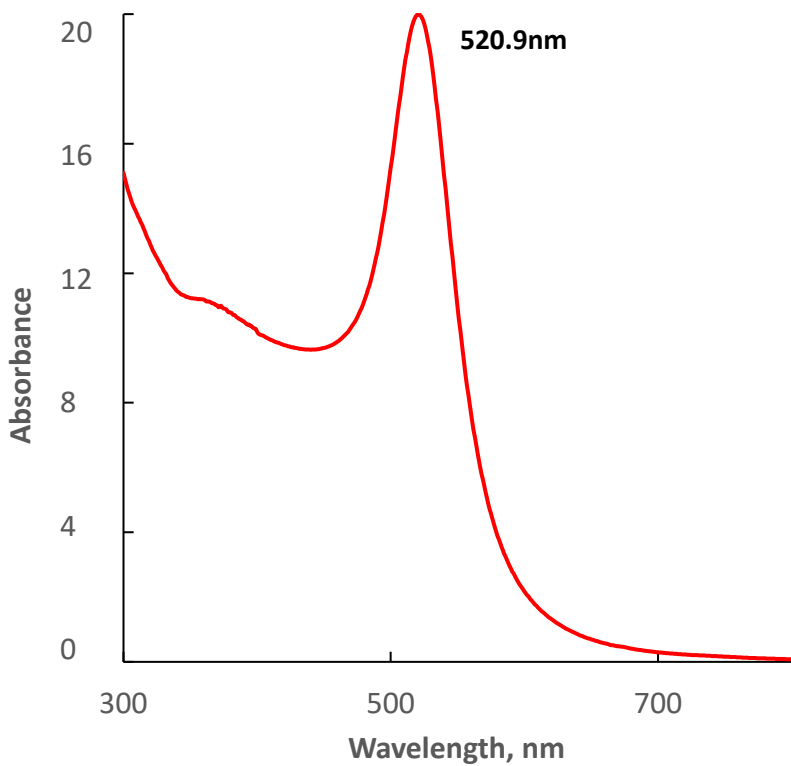
NB-GSPLF-30-CIT-20

NANOBRAND

30nm Gold Nano-spheres "Lateral-Flow-Easy"



Optical Properties



Size Distribution

