


SKYLINE PLAZA

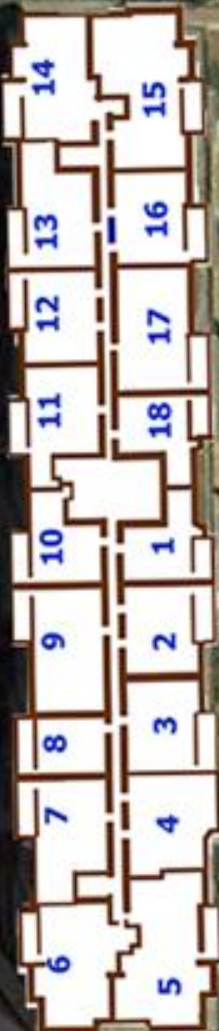
Building Design and Floor Plans

An aerial satellite-style photograph of a city area. A large blue callout box with a white border and a white arrow pointing to the right is overlaid on the left side of the image. The text inside the box is in a bold, black, sans-serif font. The background shows a mix of green trees, grey roads, and various buildings. A specific building complex is highlighted with a light green tint. Labels for 'Leesburg Pike', 'S George Mason Dr', 'Skyline Plaza', 'Lucky Run', 'Dawes Ave', and 'Metered Lot' are visible on the map. A 'McDonald's' logo is also present on the right side.

**Skyline plaza
consists of
2 towers
each are
26 stories high**

3701 South
GEORGE
MASON DR

North
Building
3701



SKYLINE PLAZA



South
Building
3705



3705 South
GEORGE
MASON DR



3701 South
GEORGE
MASON DR

North
Building
3701

A picnic area with charcoal grills and Skyline Kids playground occupy some of the ten acres of green space surrounding the Buildings



South
Building
3705

The buildings are served by eight passenger elevators and two service elevators

3705 South
GEORGE
MASON DR

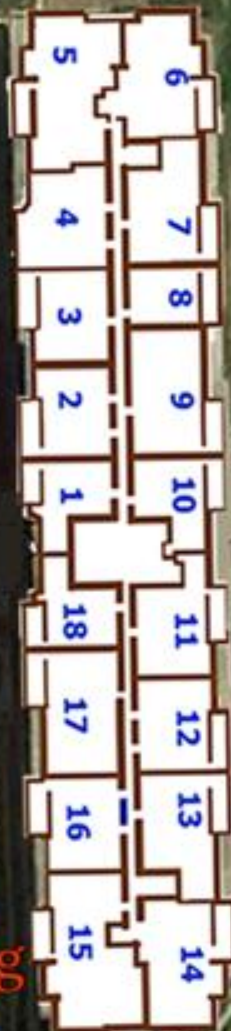
3701 South
GEORGE
MASON DR

North
Building
3701

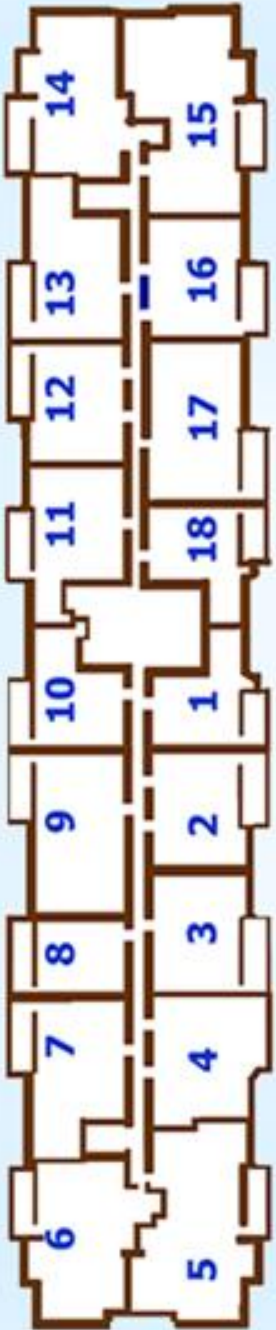


The spacious
open
entrance is
staffed
by 24 hour
reception desk
and Security guards

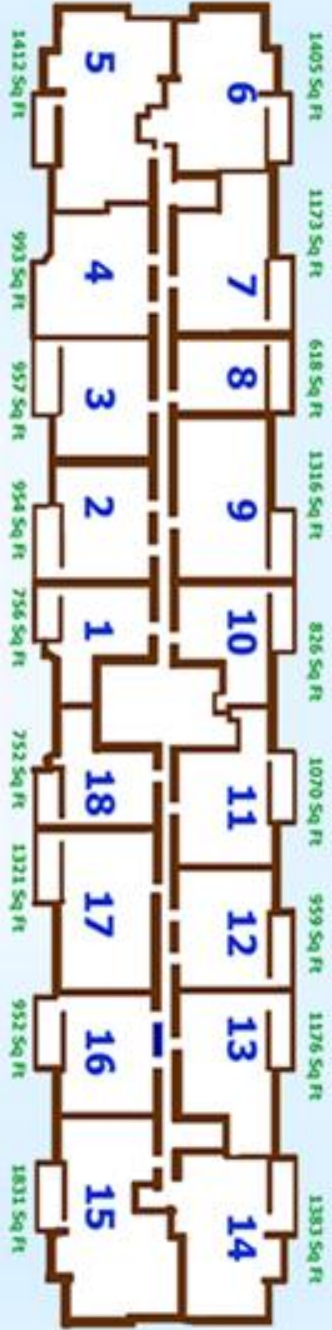
South
Building
3705

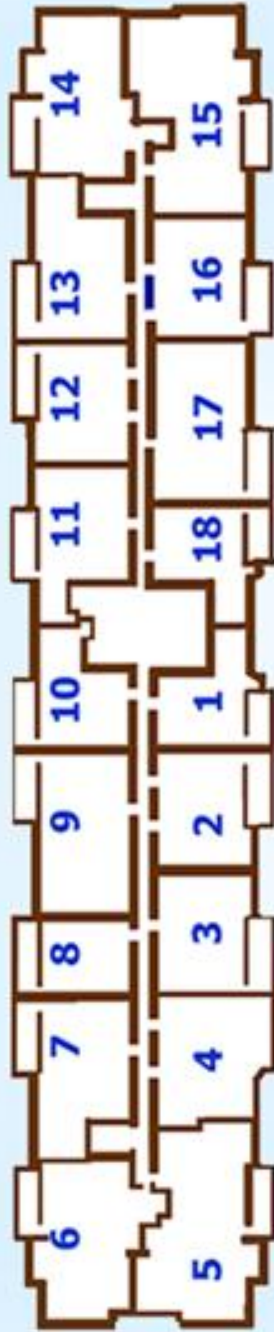


3705 South
GEORGE
MASON DR



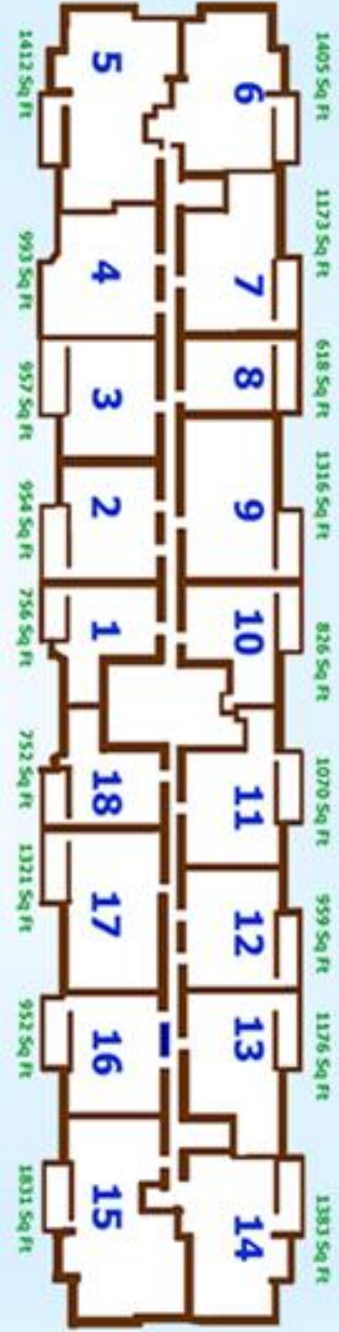
SKYLINE PLAZA'S
 2 residential towers mirror each other in design and contain 957 residential units.



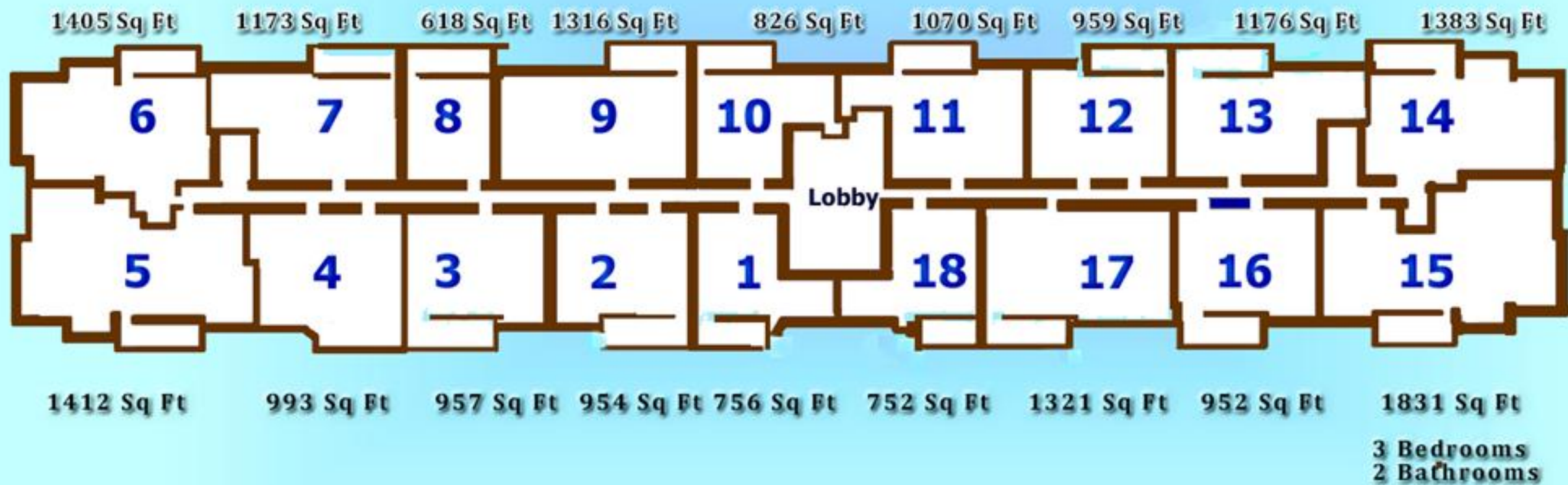


The Floor Plans of these units are divided into 18 configurations or tiers.

Condo Designs range from Studios to Three-bedroom models with a washer and dryer in each unit.

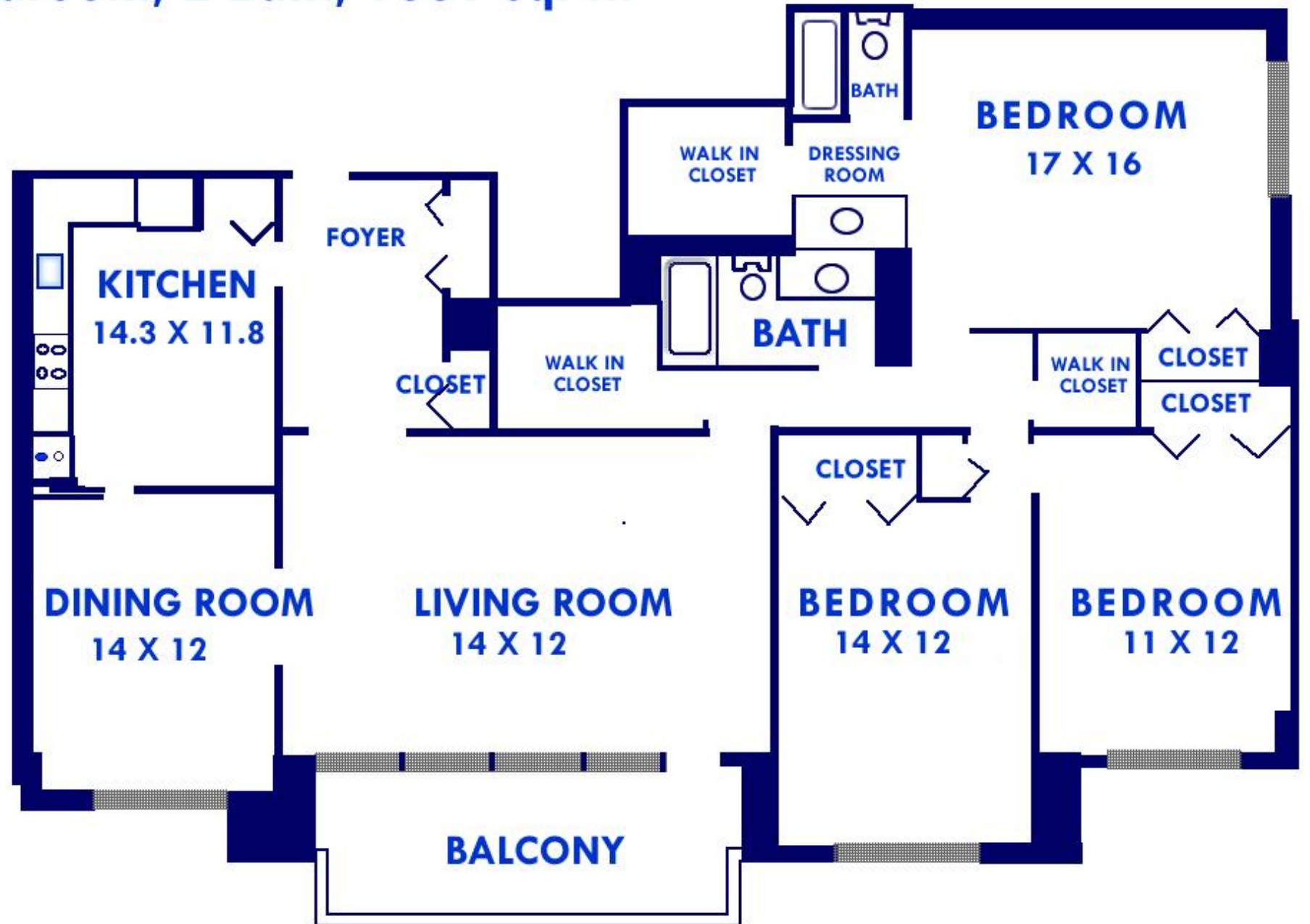


SKYLINE PLAZA CONFIGURATIONS



TIER 15

3 Bedroom, 2 Bath, 1831 sq. ft.





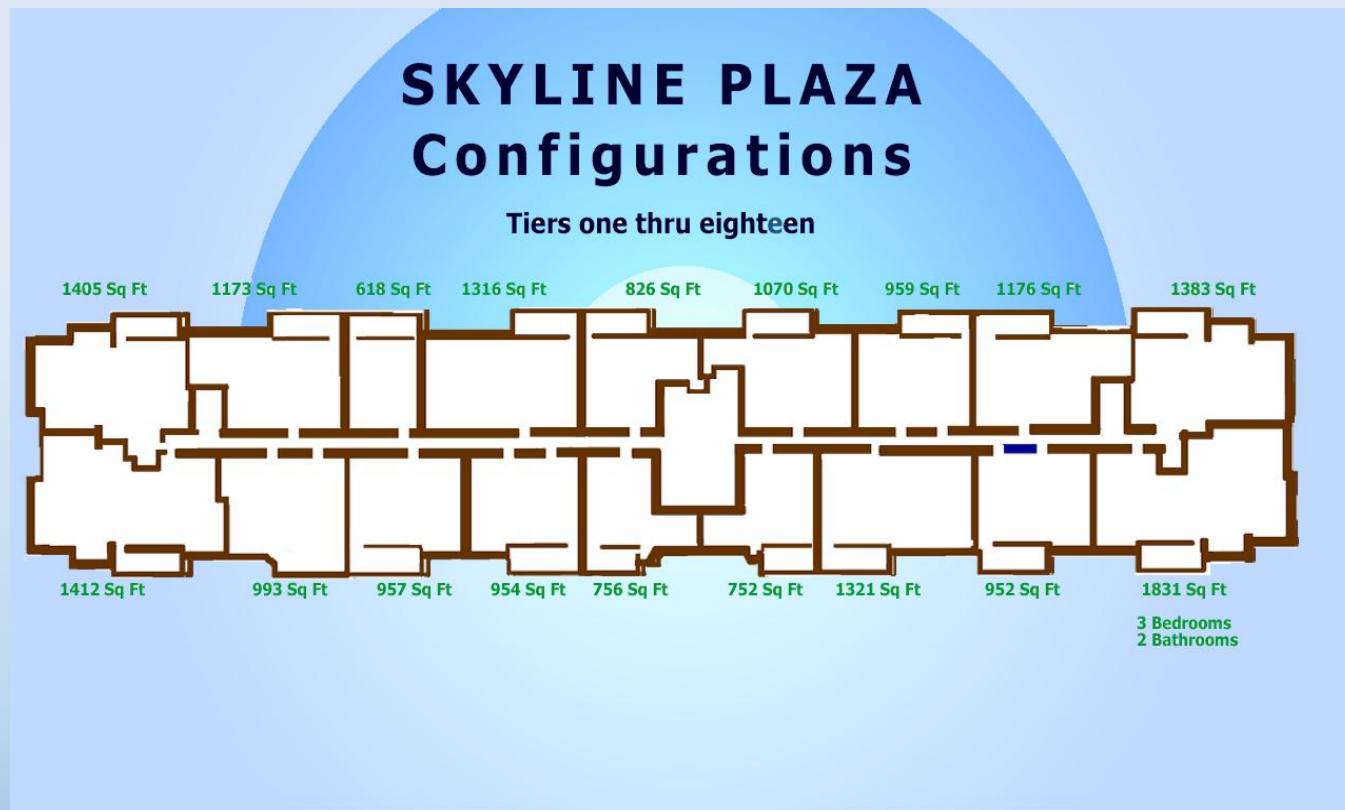
The Gomez Group
Weichert
gomezgrouprealtor.com

Tier 14

**Deluxe 2 Bedrooms,
2 Baths
1383 sq.ft.,**

Sorted by Tier number

Tier 1	1 Bedroom, 1 Bath, 756 sq. ft.
Tier 2	1 Bedroom, 1 Bath, 954 sq. ft.
Tier 3	1 Bedroom, 1 Bath, 957 sq. ft.
Tier 4	1 Bedroom, 1.5 Bath, 993 sq. ft.
Tier 5	2 Bedroom, 2 Bath, 1712 sq. ft.
Tier 6	2 Bedroom, 2 Bath, 1405 sq. ft.
Tier 7	1 Bedroom, 1.5 Bath, 1173 sq. ft.
Tier 8	Executive, 618 sq. ft.
Tier 9	2 Bedroom, 2 Bath, 1316 sq. ft.
Tier 10	1 Bedroom, 1 Bath, 826 sq. ft.
Tier 11	1 Bedroom, 1.5 Bath, 1070 sq. ft.
Tier 12	1 Bedroom, 1 Bath, 959 sq. ft.
Tier 13	1 Bedroom, 1.5 Bath, 1176 sq. ft.
Tier 14	2 Bedroom, 2 Bath, 1383 sq. ft.
Tier 15	3 Bedroom, 2 Bath, 1831 sq. ft.
Tier 16	1 Bedroom, 1 Bath, 952 sq. ft.
Tier 17	2 Bedroom, 2 Bath, 1321 sq. ft.
Tier 18	1 Bedroom, 1 Bath, 752 sq. ft.



We will be happy to show you what's currently available at skyline and other places throughout Northern Virginia. Contact us for a complete price trend analysis and information about the other designs in the building. Reach out to us today!

The Gomez Group
Weichert

gomezgrouprealtor.com