

Lasting Color



ARCHITECTURAL LIQUID & POWDER COATINGS COLOR GUIDE

Bringing innovation to the surface.™



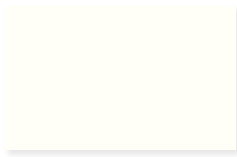
(718) 272-1831



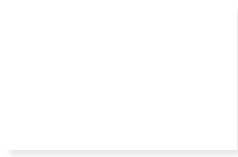
Duramar Coatings

2-Coat System: Primer & Color

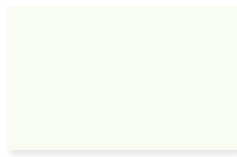
The color chip samples and codes shown in this guide represent *Duramar* Extrusion Liquid Coatings. These same colors may be available for other coatings technologies and product lines. See the *Order Today* section for more detail and availability.



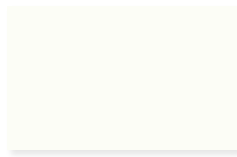
01. Bone White
UC43350
SRI 88



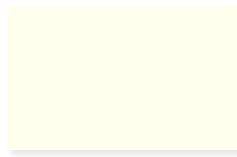
02. Graham White
UC72638
SRI 95



03. Bone White
UC109880
SRI 84



04. Bright White
UC55026
SRI 95



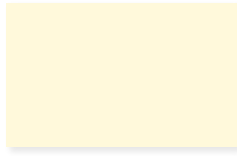
05. Colonial White
UC54983
SRI 88



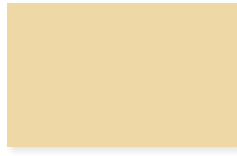
06. Ivory
UC54412
SRI 74



07. Malt
UC105738
SRI 74



08. Natural Wicker
UC105747
SRI 86



09. Caramel Latte
UC105737
SRI 70



10. Sahara Sand
UC72861
SRI 62



11. Sandstone
UC109856
SRI 59



12. Beige
UC54137
SRI 61



13. Seawolf
UC109855
SRI 43



14. Antique Bronze
UC100027
SRI 29



15. Fairview Taupe
UC105741
SRI 17



16. Cocoa Bean
UC105735
SRI 8



17. Medium Bronze
UC109862
SRI 10



18. Bronze
UC110460
SRI 2



19. Statuary Bronze
UC43347
SRI 2



20. Bronze
UC109850
SRI 2



21. Brick Red
UC43355
SRI 31



22. River Rouge Red
UC52006
SRI 19



23. Roasted Red Pepper*
UC102320XL
SRI 48



24. Aged Copper
UC54434
SRI 49



25. Bermuda Blue
UC106661
SRI 12



26. Fashion Gray
UC51825
SRI 33



27. Eclipse Gray
UC106669
SRI 8



28. Charcoal
UC109852
SRI 4



29. Charcoal Gray
UC54271
SRI 4



30. Black
UC40577
SRI -3

*Duramar XL Coatings (3-coat system) color requires XL clear coat due to pigmentation

DURANAR® SUNSTORM® Coatings

2-Coat System: Primer & Mica-Containing Color Coat



31. Platinum Mica
UC106682F
SRI 59



32. Renaissance Silver
UC106663F
SRI 81



33. Silver
UC70470F
SRI 68



34. Arcadia Silver
UC70123F
SRI 59



35. Silversmith
UC70092F
SRI 47



36. Anodic Clear
UC110423F
SRI 53



37. Galaxy Silver
UC106683F
SRI 51



38. Satin Nickel
UC106684F
SRI 36



39. Pewter
UC110227F
SRI 27



40. Pewter
UC70191F
SRI 26



41. Silver Gray
UC70192F
SRI 33



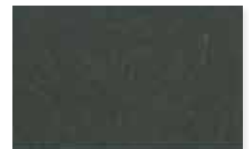
42. Silverstorm
UC106685F
SRI 17



43. Medium Gray
UC102662F
SRI 16



44. Gray Velvet
UC70214F
SRI 15



45. Cosmic Gray Mica
UC106686F
SRI 6



46. Washington White
UC70129BC
SRI 92



47. Manhattan Beige Pearl
UC106687F
SRI 66



48. Sunlight Silver
UC106681F
SRI 76



49. Moondust Mica
UC106688F
SRI 55



50. Champagne
UC70104F
SRI 44



51. Natural Suede Mica
UC106666F
SRI 55



52. Champagne Bronze
UC70202F
SRI 40



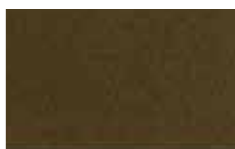
53. Cashmere Pearl
UC106689F
SRI 36



54. Harvest Gold Pearl
UC106690F
SRI 38



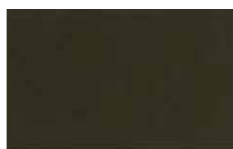
55. Driftwood Mica
UC106692F
SRI 21



56. Lexus Bronze
UC106698F
SRI 7



57. Bistro Bronze
UC106693F
SRI 8



58. Dark Bronze
UC70149F
SRI 3



59. Dark Briar Mica
UC106694F
SRI 2



60. Café Noir Pearl
UC106695F
SRI 23

The Duranar color chips provided in our color guide are as close as possible to the Duranar paint color, however color chip reproduction has limitations. Panels of the actual Duranar finish are available upon request. The color guide represents the range of available colors, and custom color matches are available within the limits of durable color pigments.

Duranar XL Coatings

3-Coat System: Primer, Color & Clear Coat
Solid, Mica, Metallic & Exotic Colors Available

Duranar XLB Coatings

4-Coat System: Primer, Barrier, Color & Clear Coat
Solid, Mica, Metallic & Exotic Colors Available



61. Metallic Mist
UC106703XL
SRI 61



62. Platinum
UC106704XL
SRI 53



63. White Ice Metallic
UC106706XL
SRI 51



64. Silver
UC51131XL
SRI 48



65. Bright Silver*
UC55028XLB
SRI 51



66. Steel-City Silver
UC106705XL
SRI 48



67. Champagne Metallic
UC70178XL
SRI 51



68. Silver
UC82989XL
SRI 58



69. Space Silver
BK20413XL
SRI 58



70. Bright Silver II*
UC57639XLB
SRI 81



71. Silver Gray
UC50958XL
SRI 32



72. Pewter
UC51713XL
SRI 26



73. Silver Shadow
UC106707XL
SRI 23



74. Medium Gray
UC51595XL
SRI 19



75. Graphite Gray*
UC106708LB
SRI 2



76. Champagne
UC82080XL
SRI 26



77. Champagne Gold
UC51568XL
SRI 31



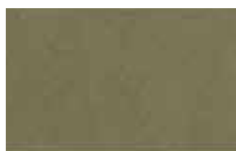
78. Fawn Metallic
UC106710XL
SRI 50



79. Autumnwood Metallic*
UC106711LB
SRI 41



80. Mocha-ccino
UC105758XL
SRI 16



81. Light Bronze
UC51227XL
SRI 26



82. Medium Bronze
UC51515XL
SRI 13



83. Antique Bronze
UC54445XL
SRI 13



84. Summer Suede Metallic
UC106712XL
SRI 45



85. Chocolate Bronze
UC106709XL
SRI 6



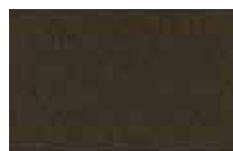
86. Cinnagold Dust
UC106717XL
SRI 38



87. Burlesque
UC106719XL
SRI 20



88. Mineral Brown Metallic
UC106715XL
SRI 0



89. Vintage Bronze
UC106714XL
SRI 2



90. Dark Bronze
UC51602XL
SRI 6

*Duranar XLB Coatings (4-coat system) with barrier coat

	<i>Duranar</i> Extrusion Liquid	<i>Duranar</i> Coil Liquid	<i>Duranar</i> Extrusion Powder	<i>Coraflon</i> Extrusion Powder	<i>Duracron</i> Extrusion Liquid	<i>Polycron</i> Extrusion Liquid	<i>Envirocron 03</i> Extrusion Powder
Resin	PVDF	PVDF	PVDF	FEVE	Acrylic	Polyester	Polyester
AAMA	2605	2605	2605	2605	2603	2603	2603
46. Washington White	UC70129BC	BN8W103B	PD100057	PCNT23107	N/A	N/A	PCTT23136
47. Manhattan Beige Pearl	UC106687F	BN8N128B	PD100058	PCNT23108	N/A	N/A	PCTT23137
48. Sunlight Silver	UC106681F	N/A	PD100021	PCNT73129	N/A	N/A	PCTT73150
49. Moondust Mica	UC106688F	BN7A108B	PD100059	PCNT23109	N/A	N/A	PCTT23138
50. Champagne	UC70104F	BN8N129B	PD100060	PCNT23110	N/A	N/A	PCTT23139
51. Natural Suede Mica	UC106666F	BN8A170B	PD100061	PCNT23111	N/A	N/A	PCTT23140
52. Champagne Bronze	UC70202F	BN7N111B	PD100062	PCNT23112	N/A	N/A	PCTT23141
53. Cashmere Pearl	UC106689F	BN8N130B	PD100063	PCNT23113	N/A	N/A	PCTT23142
54. Harvest Gold Pearl	UC106690F	BN8N131B	PD100064	PCNT23114	N/A	N/A	PCTT23143
55. Driftwood Mica	UC106692F	BN8N132B	PD100040	PCNT23115	N/A	N/A	PCTT23144
56. Lexus Bronze	UC106698F	BN8N133B	PD100065	PCNT23116	N/A	N/A	PCTT23145
57. Bistro Bronze	UC106693F	BN8N134B	PD100066	PCNT23117	N/A	N/A	PCTT23146
58. Dark Bronze	UC70149F	BN8N135B	PD100067	PCNT23118	N/A	N/A	PCTT23147
59. Dark Briar Mica	UC106694F	BN8N101B	PD100068	PCNT23119	N/A	N/A	PCTT23148
60. Café Noir Pearl	UC106695F	BN8N136B	PD100035	PCNT93100	N/A	N/A	PCTT93103
61. Metallic Mist	UC106703XL	BN9A144B	N/A	N/A	UC118331	UC118403	N/A
62. Platinum	UC106704XL	BN9A145B	N/A	N/A	UC118332	UC118404	N/A
63. White Ice Metallic	UC106706XL	N/A	N/A	N/A	UC113845	UC118406	N/A
64. Silver	UC51131XL	N/A	N/A	N/A	UC59989	UC92402X	N/A
65. Bright Silver	UC55028XLB	BN9A118B	N/A	N/A	UC60662X	UC118407	N/A
66. Steel-City Silver	UC106705XL	BN9A148B	N/A	N/A	UC113027	UC118410	N/A
67. Champagne Metallic	UC70178XL	BN9A123B	N/A	N/A	UC75187X	UC118411	N/A
68. Silver	UC82989XL	N/A	N/A	N/A	UC118333	UC118408	N/A
69. Space Silver	BK20413XL	N/A	N/A	N/A	UC107228	UC118405	N/A
70. Bright Silver II	UC57639XLB	N/A	N/A	N/A	UC75396X	UC118413	N/A
71. Silver Gray	UC50958XL	BN9A150B	N/A	N/A	UC97767X	UC76406X	N/A
72. Pewter	UC51713XL	BN9A151B	N/A	N/A	UC56936X	UC118415	N/A
73. Silver Shadow	UC106707XL	BN9A152B	N/A	N/A	UC111052	UC118416	N/A
74. Medium Gray	UC51595XL	BN9A153B	N/A	N/A	UC92405X	UC113739	N/A
75. Graphite Gray	UC106708LB	BN9A154B	N/A	N/A	UC118334	UC118422	N/A
76. Champagne	UC82080XL	BN9A131B	N/A	N/A	UC118335	UC118409	N/A
77. Champagne Gold	UC51568XL	BN9N114B	N/A	N/A	UC74045X	UC118412	N/A
78. Fawn Metallic	UC106710XL	BN9A117B	N/A	N/A	UC118336	UC118414	N/A
79. Autumnwood Metallic	UC106711LB	BN9N115B	N/A	N/A	N/A	N/A	N/A
80. Mocha-ccino	UC105758XL	BN9N116B	N/A	N/A	UC118338	UC118417	N/A
81. Light Bronze	UC51227XL	BN9N117B	N/A	N/A	UC97490X	UC92515	N/A
82. Medium Bronze	UC51515XL	BN9N118B	N/A	N/A	UC64150X	UC61067X	N/A
83. Antique Bronze	UC54445XL	BN9N119B	N/A	N/A	UC118339	UC118418	N/A
84. Summer Suede Metallic	UC106712XL	BN9A113B	N/A	N/A	N/A	N/A	N/A
85. Chocolate Bronze	UC106709XL	BN9N120B	N/A	N/A	UC118004	UC118419	N/A
86. Cinnagold Dust	UC106717XL	BN9N121B	N/A	N/A	N/A	N/A	N/A
87. Burlesque	UC106719XL	BN9R100B	N/A	N/A	UC118341	UC118400	N/A
88. Mineral Brown Metallic	UC106715XL	BN9N122B	N/A	N/A	UC114067	UC118423	N/A
89. Vintage Bronze	UC106714XL	BN9N123B	N/A	N/A	UC113088	UC118421	N/A
90. Dark Bronze	UC51602XL	BN9N124B	N/A	N/A	UC89990X	UC118420	N/A

Order Today

PPG architectural coatings are available for the coil and aluminum extrusion markets in liquid or powder and for both exterior and interior applications. The table below lists the color code, if available, for seven different qualities of coatings*. PPG has you covered for any specification required on your next building project.

	Duranar Extrusion Liquid	Duranar Coil Liquid	Duranar Extrusion Powder	Coraflon Extrusion Powder	Duracron Extrusion Liquid	Polycron Extrusion Liquid	Envirocron 03 Extrusion Powder
Resin	PVDF	PVDF	PVDF	FEVE	Acrylic	Polyester	Polyester
AAMA	2605	2605	2605	2605	2603	2603	2603
01. Bone White	UC43350	BN5W149B	PD800000	PCNT88101	UC113812	UC71428X	PCTT88148
02. Graham White	UC72638	N/A	PD800007	PCNT88151	UC96873X	UC100756X	PCTT88149
03. Bone White	UC109880	BN2W106B	PD800027	PCNT88147	UC111717X	UC118385	PCTT88150
04. Bright White	UC55026	N/A	PD800001	PCNT88148	UC73135X	UC73160X	PCTT88151
05. Colonial White	UC54983	BN5W151B	PD800006	PCNT88149	UC118306	UC96583X	PCTT88152
06. Ivory	UC54412	BN5I117B	PD800008	PCNT88150	UC118307	UC118387	PCTT88153
07. Malt	UC105738	BN5N165B	PD200007	PCNT28207	UC111072X	UC118388	PCTT28242
08. Natural Wicker	UC105747	BN5N166B	PD200006	PCNT28208	UC111065	UC118386	PCTT28243
09. Caramel Latte	UC105737	BN5W133B	PD200002	PCNT28174	UC108981X	UC118139	PCTT28244
10. Sahara Sand	UC72861	BN5N167B	PD200012	PCNT28209	UC107466	UC72841X	PCTT28245
11. Sandstone	UC109856	BN5N168B	PD200017	PCNT28210	UC114217	UC118389	PCTT28246
12. Beige	UC54137	BN5N169B	PD200014	PCNT28102	UC55831X	UC118390	PCTT28247
13. Seawolf	UC109855	BN5N170B	PD200067	PCNT28211	UC118308	UC118391	PCTT28248
14. Antique Bronze	UC100027	BN5N171B	PD200068	PCNT28212	UC118309	UC103901X	PCTT28249
15. Fairview Taupe	UC105741	BN5N172B	PD200005	PCNT28128	UC118310	UC118393	PCTT28250
16. Cocoa Bean	UC105735	BN5N173B	PD200010	PCNT28213	UC113176	UC118398	PCTT28251
17. Medium Bronze	UC109862	BN5N174B	PD200069	PCNT28214	UC118311	UC118396	PCTT28252
18. Bronze	UC110460	BN5N175B	PD200070	PCNT28215	UC118312	UC118401	PCTT28253
19. Statuary Bronze	UC43347	BN5N176B	PD200011	PCNT28216	UC54212X	UC61862X	PCTT28254
20. Bronze	UC109850	BN5N177B	PD200071	PCNT28217	UC118313	UC114209	PCTT28255
21. Brick Red	UC43355	BN5R122B	PD600014	PCNT68116	UC61160X	UC64247X	PCTT68140
22. River Rouge Red	UC52006	BN5R123B	PD600002	PCNT68117	UC53979X	UC67193X	PCTT68141
23. Roasted Red Pepper	UC102320XL	N/A	N/A	N/A	UC118314	UC118397	N/A
24. Aged Copper	UC54434	BN5G143B	PD400015	PCNT48129	UC62488	UC118392	PCTT48152
25. Bermuda Blue	UC106661	BN5L110B	PD500000	PCNT58113	UC108902X	UC118394	PCTT58122
26. Fashion Gray	UC51825	BN5A154B	PD900040	PCNT78166	UC55334	UC72654X	PCTT78161
27. Eclipse Gray	UC106669	BN5A155B	PD900000	PCNT78163	UC108703X	UC118395	PCTT78157
28. Charcoal	UC109852	BN5A157B	PD900015	PCNT78164	UC118315	UC118399	PCTT78158
29. Charcoal Gray	UC54271	BN2A105B	PD900003	PCNT78165	UC97252X	UC64285X	PCTT78159
30. Black	UC40577	BN2B108B	PD900001	PCNT98111	UC53128X	UC118402	PCTT98117
31. Platinum Mica	UC106682F	N/A	PD100046	PCNT73114	N/A	N/A	PCTT73135
32. Renaissance Silver	UC106663F	N/A	PD100022	PCNT73115	N/A	N/A	PCTT73136
33. Silver	UC70470F	N/A	PD100047	PCNT73116	N/A	N/A	PCTT73137
34. Arcadia Silver	UC70123F	N/A	PD100013	PCNT73117	N/A	N/A	PCTT73138
35. Silversmith	UC70092F	BN8A109B	PD100002	PCNT73118	N/A	N/A	PCTT73139
36. Anodic Clear	UC110423F	BN8A120B	PD100048	PCNT73119	N/A	N/A	PCTT73140
37. Galaxy Silver	UC106683F	BN7A120B	PD100049	PCNT73120	N/A	N/A	PCTT73141
38. Satin Nickel	UC106684F	BN8A162B	PD100050	PCNT73121	N/A	N/A	PCTT73142
39. Pewter	UC110227F	BN8A163B	PD100051	PCNT73122	N/A	N/A	PCTT73143
40. Pewter	UC70191F	BN8A164B	PD100052	PCNT73123	N/A	N/A	PCTT73144
41. Silver Gray	UC70192F	BN8A165B	PD100030	PCNT73124	N/A	N/A	PCTT73145
42. Silverstorm	UC106685F	BN8A166B	PD100053	PCNT73125	N/A	N/A	PCTT73146
43. Medium Gray	UC102662F	BN7A109B	PD100054	PCNT73126	N/A	N/A	PCTT73147
44. Gray Velvet	UC70214F	BN8A167B	PD100055	PCNT73127	N/A	N/A	PCTT73148
45. Cosmic Gray Mica	UC106686F	BN8A168B	PD100056	PCNT73128	N/A	N/A	PCTT73149

* The chip samples are meant to approximate color for Duranar Extrusion Liquid coatings. There may be some variation when the same colors are reproduced for the other resins and/or technologies.

Lasting Choices...

with PPG Architectural Coating Systems

DURANAR® Coatings

Proven performance, lasting color and durability. That’s why generations of architects and building professionals have trusted *Duranar* coatings to protect architectural metal substrates. With *Duranar* coatings, they know – no matter what the application – they’ll get good-looking, long-lasting results.

All *Duranar* coatings contain 70% fluoropolymer resin, which is chemically inert to protect your building from environmental stresses. *Duranar* finishes resist dirt pickup, chalking, fading, and UV degradation. Mineral acids and detergents will not stain *Duranar* finishes. Adhesion and flexibility are excellent, and the film resists chipping, cracking, crazing, erosion, abrasion and impact.

All *Duranar* coating systems meet the industry’s toughest performance requirements, including AAMA 2605 for *Voluntary Specification, Performance Requirements and Test Procedures for Superior Performing Organic Coatings on Aluminum Extrusions and Panels*.



American Architectural
Manufacturers Association

Additional Coatings Choices from PPG

PPG offers a wide variety of other liquid and powder coatings choices for the architectural market, many available in the same colors as the *Duranar* coatings samples found in this guide.

CORAFLO™ fluoropolymer powder coatings offer exceptional color retention and chalk resistance, and are used for a multiple array of end uses. DURACRON® aluminum extrusion liquid coatings are acrylic-based, one-coat systems with more than 35 years of field-proven performance. POLYCRON® polyester-based liquid coatings are one-coat systems that meet increasingly restrictive environmental regulations. Both *Duracron* and *Polycron* coatings are recommended for residential or commercial interior applications. ENVIROCRON™ 03 durable powder coatings provide an environmentally friendly approach and are used in residential applications as well.

Product Specifications

	<i>Duranar</i> Liquid & Powder Coatings	<i>Coraflo</i> Powder Coatings	<i>Duracron</i> Liquid Coatings	<i>Polycron</i> Liquid Coatings	<i>Envirocron 03</i> Powder Coatings
Resin Technology	PVDF	FEVE	Acrylic	Polyester	Polyester
AAMA Specification	AAMA 2605	AAMA 2605	AAMA 2603	AAMA 2603	AAMA 2603
Coating Layers	Primer / topcoat	One coat	One coat	One coat	One coat
Seacoast Coverage	Yes	No	No	No	No
Humidity*	1,500 hrs. steel 4,000 hrs. aluminum	4,000 hrs.	1,500 hrs.	1,500 hrs.	1,500 hrs.
Salt Spray*	1,000 hrs. steel 4,000 hrs. aluminum	4,000 hrs.	1,500 hrs.	1,500 hrs.	1,500 hrs.
South Florida Weathering**	10 years	10 years	1 year	1 year	1 year
Gloss	20° – 30°	20° – 80°	20° – 80°	20° – 80°	20° – 80°

*Tests performed to AAMA Specifications.

PPG CAP CERTIFIED APPLICATOR PROGRAM™

Another reason to choose PPG coatings is our nationwide network of coatings applicators, including the *PPG CAP Certified Applicator Program*. *PPG CAP* members are part of a select group of exceptional applicators that are fully capable of delivering high-performance, PPG-coated aluminum products on time to meet demanding construction schedules.

For more information about PPG products and a complete list of *PPG CAP* members, visit us online at ppgideascape.com.