



Drylac®  
Powder Coatings

# Super Durable

Super Durable Powder Coatings | Volume 2



# Vol. 2

**TIGER Drylac® Series 38/138** is available in smooth glossy finish (*gloss level 80-95*) in the following RAL colors as standard-products and custom-products (*minimum order quantity applies*). Please contact **TIGER Drylac®** for more information:

| RAL color   Product ID           | RAL color   Product ID           | RAL color   Product ID           | RAL color   Product ID           | RAL color   Product ID            | RAL color   Product ID |
|----------------------------------|----------------------------------|----------------------------------|----------------------------------|-----------------------------------|------------------------|
| RAL 1001   38/15001<br>138/15001 | RAL 6001   38/50005<br>138/50005 | RAL 6029   38/50029<br>138/50029 | RAL 7030   38/70027<br>138/70027 | RAL 8008   38/60008<br>*138/60008 |                        |
| RAL 1002   38/20002<br>138/20002 | RAL 6003   38/50003<br>138/50003 | RAL 6032   38/50032<br>138/50032 | RAL 7031   38/70031<br>138/70031 | RAL 8011   38/60011<br>138/60011  |                        |
| RAL 1013   38/10013<br>138/10013 | RAL 6004   38/50004<br>138/50004 | RAL 6033   38/50033<br>138/50033 | RAL 7032   38/70001<br>138/70001 | RAL 8012   38/60012<br>138/60012  |                        |
| RAL 1014   38/15014<br>138/15014 | RAL 6005   38/50002<br>138/50002 | RAL 6034   38/50034<br>138/50034 | RAL 7033   38/70033<br>138/70033 | RAL 8014   38/60010<br>138/60010  |                        |
| RAL 1015   38/15015<br>138/15015 | RAL 6006   38/50006<br>138/50006 | RAL 7000   38/70000<br>138/70000 | RAL 7035   38/70035<br>138/70035 | RAL 8016   38/60016<br>138/60016  |                        |
| RAL 1016   38/20016<br>138/20016 | RAL 6007   38/50007<br>138/50007 | RAL 7002   38/70007<br>138/70007 | RAL 7036   38/70036<br>138/70036 | RAL 8017   38/60017<br>138/60017  |                        |
| RAL 1019   38/15019<br>138/15019 | RAL 6008   38/50008<br>138/50008 | RAL 7004   38/70004<br>138/70004 | RAL 7037   38/70037<br>138/70037 | RAL 8019   38/60019<br>138/60019  |                        |
| RAL 1020   38/20020              | RAL 6009   38/50009<br>138/50009 | RAL 7005   38/70005<br>138/70005 | RAL 7038   38/70038<br>138/70038 | RAL 8022   38/60022<br>138/60022  |                        |
| RAL 1024   38/20024<br>138/20024 | RAL 6011   38/50011<br>138/50011 | RAL 7006   38/70006<br>138/70006 | RAL 7039   38/70039<br>138/70039 | RAL 8024   38/60024<br>138/60024  |                        |
| RAL 3012   38/30012<br>138/30012 | RAL 6012   38/50012<br>138/50012 | RAL 7009   38/70009<br>138/70009 | RAL 7040   38/70046<br>138/70046 | RAL 8025   38/60025<br>138/60025  |                        |
| RAL 5004   38/40004<br>138/40004 | RAL 6013   38/50013<br>138/50013 | RAL 7010   38/70014<br>138/70014 | RAL 7042   38/70042<br>138/70042 | RAL 8028   38/60028<br>138/60028  |                        |
| RAL 5007   38/40007<br>138/40007 | RAL 6016   38/50016<br>138/50016 | RAL 7011   38/70011<br>138/70011 | RAL 7043   38/70043<br>138/70043 | RAL 9001   38/10001<br>138/10001  |                        |
| RAL 5008   38/40008<br>138/40008 | RAL 6017   38/50017<br>138/50017 | RAL 7012   38/70012<br>138/70012 | RAL 7044   38/70044<br>138/70044 | RAL 9002   38/10002<br>138/10002  |                        |
| RAL 5011   38/40011<br>138/40011 | RAL 6018   38/50018<br>138/50018 | RAL 7013   38/70013<br>138/70013 | RAL 7045   38/70045<br>138/70045 | RAL 9003   38/10003<br>138/10003  |                        |
| RAL 5013   38/40013<br>138/40013 | RAL 6019   38/50019<br>138/50019 | RAL 7015   38/70015<br>138/70015 | RAL 7046   38/70002<br>138/70817 | RAL 9004   38/80004<br>138/80004  |                        |
| RAL 5017   38/40017<br>138/40017 | RAL 6020   38/50020<br>138/50020 | RAL 7016   38/70016<br>138/70016 | RAL 7047   38/70047<br>138/70047 | RAL 9005   38/80010<br>138/80010  |                        |
| RAL 5018   38/40020<br>138/40020 | RAL 6021   38/50021<br>138/50021 | RAL 7021   38/70021<br>138/70021 | RAL 8001   38/60005<br>138/60005 | RAL 9010   38/10004<br>138/10004  |                        |
| RAL 5019   38/40019<br>138/40019 | RAL 6022   38/50022<br>138/50022 | RAL 7022   38/70022<br>138/70022 | RAL 8002   38/60002<br>138/60002 | RAL 9011   38/80001<br>138/80001  |                        |
| RAL 5020   38/40018<br>138/40018 | RAL 6026   38/50026<br>138/50026 | RAL 7023   38/70023<br>138/70827 | RAL 8003   38/60003<br>138/60003 | RAL 9016   38/10010<br>138/10010  |                        |
| RAL 5021   38/40021<br>138/40021 | RAL 6027   38/50027<br>138/50027 | RAL 7024   38/70024<br>138/70024 | RAL 8004   38/60004<br>138/60004 | RAL 9017   38/80017<br>138/80017  |                        |
| RAL 6000   38/50000<br>138/50000 | RAL 6028   38/50028<br>138/50028 | RAL 7026   38/70026<br>138/70026 | RAL 8007   38/60007<br>138/60007 | RAL 9018   38/10018<br>138/10018  |                        |

\* Aprx to RAL 8008

### TIGER Drylac® Color Cards

Additional **TIGER Drylac®** Color Cards include: 3D Metallics, RAL Colors + Textured and Smooth, Metallics & Special Effects, Kiosk Color Card, Navy, CARC<sup>1</sup>, Agriculture, Construction & Earth Moving Equipment (ACE)<sup>2</sup> and Series 29<sup>2</sup>.

#### Disclaimer

Color swatches featured in this document have been matched to color standards at a **45-degree visual angle under a D65 Daylight** primary source. RAL numbers are matched closely to the RAL Standards. Gloss level on metallic and fine textured swatches cannot be accurately measured.

Color swatches are considered as an indicator only. In practice, discrepancy between the color swatch and the actual powder coating may be present due to: paper and ink limitations, the influence of light and heat during the color swatch production, gloss level, substrate, surface variation, binder and pigment systems, coating thickness or cure oven conditions used during application. For better accuracy of color and finish, it is recommended to obtain a powder coated sample panel from **TIGER Drylac®**.

Semi transparent colors require a durable primer chemistry. Please contact **TIGER Drylac®** if using the following products in a two-coat system consisting of a primer or e-coat base coat: **TIGER Drylac® 38/90080 Brilliant Sparkle Silver** and/or **TIGER Drylac® 38/99999 Bengal Silver**.

**TIGER Drylac® Super Durable** products with a **fine texture finish** are recommended for use with a base coat primer.

<sup>1</sup> Must be a qualified applicator to order.

<sup>2</sup> Digital color card only. Visit TIGERs website to download.

## Super Durable powder coatings for exterior and interior applications

**TIGER Drylac®** features a full line of **Super Durable** high-performance powder coatings intended for architectural applications such as metal façades, steel construction, stadium seating, railings, residential window & door frames and more. **TIGER Drylac® Super Durable** products are also suitable for applications where extreme weather resistance is required such as agricultural & construction equipment, military (Army and Navy) equipment, communication towers, playground equipment, patio furniture and garden equipment.

**Please note the following TIGER Drylac® series include Super Durable products:**

|            |   |
|------------|---|
| Series 38  | Super Durable polyester                           |
| Series 138 | Super Durable TGIC-Free polyester                 |
| Series 61  | Super Durable Anodized Effect polyester TGIC-Free |
| Series 68  | 3D Metallic, Super Durable TGIC-Free polyester    |

### NEW - Series 138

**TIGER Drylac® Series 138** are **TGIC-Free Super Durable** powder coatings with “Flex Cure” a uniquely designed flexible curing technology to accommodate a quicker crosslinking of the chemistry. **Series 138** powder coatings feature reliable performance characteristics favorable to **Series 38 Super Durable** formulations.

### TIGER Shield system

This two-coat system consists of a corrosion protective primer as a base coat and an opaque weather resistant topcoat. It is used to achieve excellent corrosion resistance in harsh environments.

**TIGER Drylac® Dryprotector, (69/70000), Zinc-Rich Primer (69/90500 - 69/90701** in Canada only) and Zinc-Free **OGF Primer (09/73841)** are primers recommended to achieve an optimum non-porous film. For additional information on the application of the **TIGER Shield** system, refer to the latest Product Data Sheets for these primers, which can be found on the TIGER Coatings website.

### Bureau of Land Management (BLM) Standard Environmental Colors

The US Bureau of Land Management Standard Environmental Colors were developed by government to minimize visual contrast with background landscaping and ensure proper color selection for facilities. **TIGER Drylac® Super Durable** products in BLM colors are approved to US government standards due to their outstanding weather and UV resistance, engineered to withstand extended exposure to harsh environments.

### 3D Metallic Powder Coatings

Until now one-coat powder coatings could not match the visual performance provided by wet effect paints. However, **TIGER Coatings** is now opening spheres previously out of reach with **3D Metallics**. The coating features a breathtaking, three-dimensional effect with stunning depth, spatial clarity and unsurpassed brightness. These effects remain visible at a considerable distance and from different perspectives.

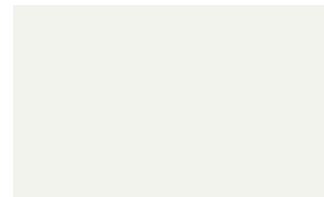
With **TIGER Drylac® 3D Metallics**, many areas of industrial surface finishing may now draw on the ‘green’ technology of powder coating and move away from solvent-based wet paints.

**TIGER Drylac® 3D Metallics** are a **Super Durable** formulation. See our **Series 68 Color Card** for details.

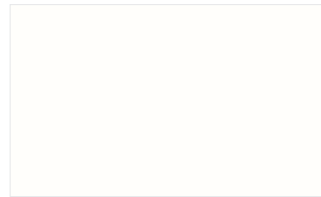
### New Product – Weathered Steel Finishes

**TIGER Drylac®** introduces two new finishes to replicate the comforting look and tactile feel of naturally weathered steel. **Weathered Steel Ambra** pleasingly resembles orange rust on iron, while **Weathered Steel Viola** exhibits deep reds and burgundies that blossom only after oxidation has occurred over many years. These finishes are easy to maintain and will retain their original color without unsightly stains and degradation that occur with rusting iron.

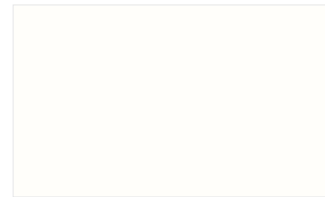
DIGITAL VERSION: The colors/effects shown here will deviate from the original color/effect due to screen technology.



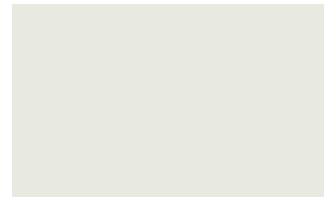
glossy | 138/10007  
Bianco 302 \*\*\* | gloss level 80-95



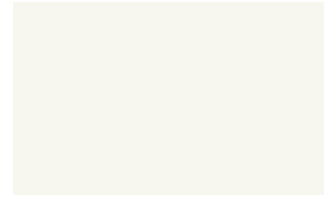
semi gloss | 138/10008  
Railing White | gloss level 55 - 65 **NEW**



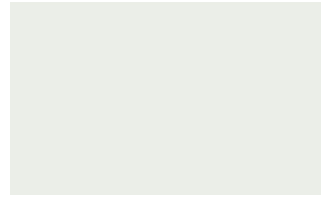
satin | 38/10130  
Seashell White \*\*\* | gloss level 23-33



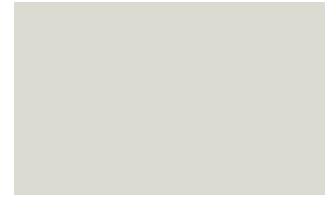
satin | 38/10070  
Bone White \*\*\* | gloss level 16-25



glossy | 138/10090  
Extrusion White \*\*\* | gloss level 80-95



semi matte | 38/11401  
Pompano White \*\*\* | gloss level 40-50



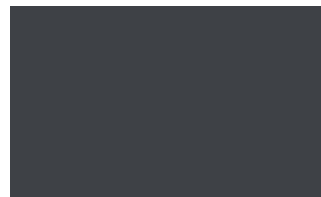
glossy | 38/70032  
Grey Classic 303 | gloss level 80-95



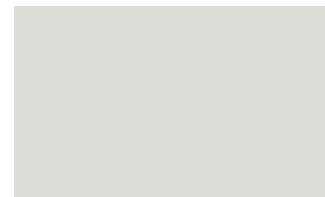
glossy | 138/70054  
Grey Classic 308 | gloss level 80-95



glossy | 38/70056  
Grey Classic 310 | gloss level 80-95



glossy | 138/70061  
Grey Classic 314 | gloss level 80-95



satin | 38/70048  
Sky Grey | gloss level 26-35



satin | 38/70025  
Ash Grey | gloss level 26-35



satin | 38/70049  
Grey | gloss level 26-35



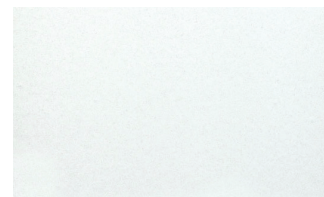
satin | 38/70019  
Slate Grey | gloss level 20-30



satin | 38/70070  
Taupe \*\*\* | gloss level 26-35



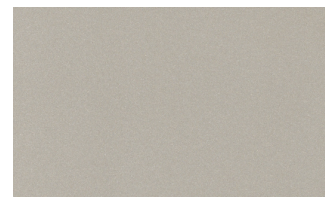
satin | 38/70780  
Charcoal Grey | gloss level 26-35 **NEW**



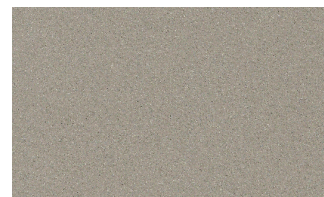
metallic | 38/90003  
Argento 301



metallic | 38/90007  
Argento 305



metallic | 38/90009  
Argento 307



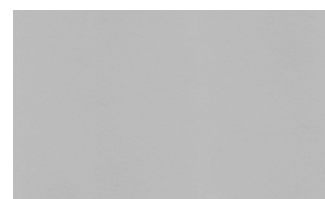
metallic | 38/90011  
Argento 308



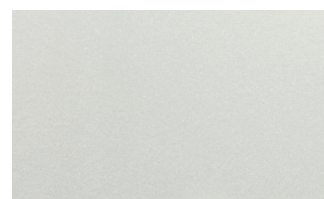
metallic | 38/90080  
Brilliant Sparkle Silver \*\* | \*\*\*



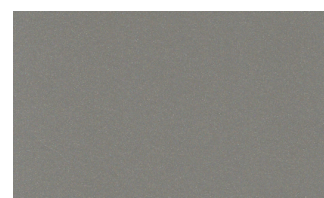
metallic | 38/99999  
Bengal Silver \*\*\*



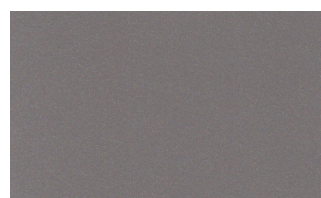
metallic | 138/91021  
Anodized Silver



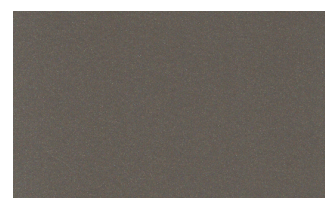
metallic | 38/90010  
Marine Silver One Coat



metallic | 38/90015  
Pearl Dark Grey



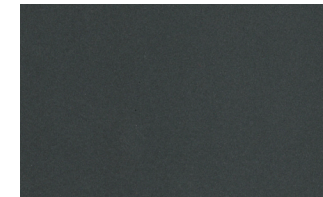
metallic | 38/90016  
Argento 312



metallic | 38/90018  
Argento 314



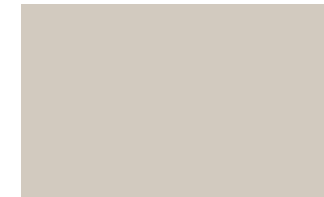
metallic | 38/97445  
Starline Silver **NEW**



metallic | 38/88005  
Sparrow Grey



satin | 38/15003  
Almond \*\*\* | gloss level 26-35



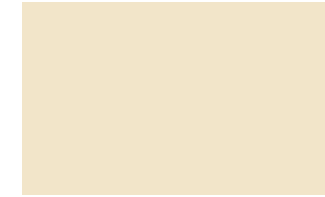
satin | 38/15012  
Sandstone \*\*\* | gloss level 26-35



satin | 38/15002  
Sierra Tan \*\*\* | gloss level 25-35



glossy | 138/15005  
Creme 301 \*\*\* | gloss level 80-95



glossy | 138/15007  
Creme 303 \*\*\* | gloss level 80-95



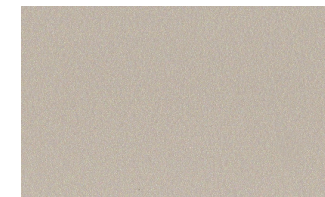
glossy | 138/15009  
Creme 305 \*\*\* | gloss level 80-95



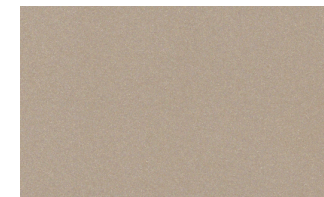
metallic | 38/15017  
Champagne 301



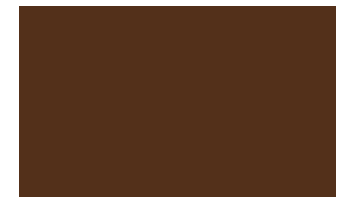
metallic | 38/15018  
Champagne 302



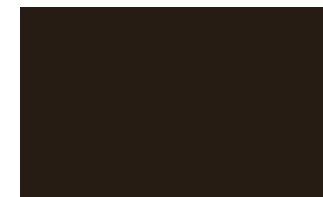
metallic | 38/15020  
Champagne 303



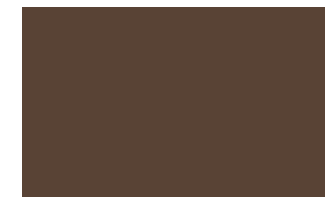
metallic | 38/15021  
Champagne 304



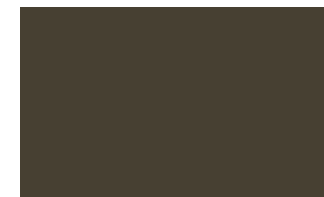
glossy | 138/60026  
Marrone 306 | gloss level 80-95



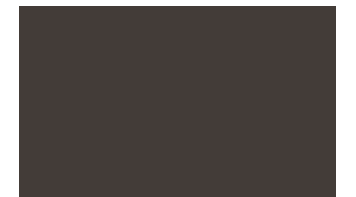
glossy | 138/60039  
Marrone 308 | gloss level 80-95



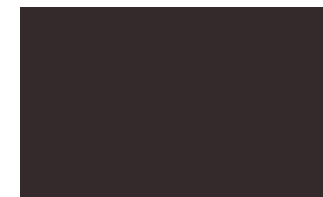
satin | 38/60018  
Koko Brown | gloss level 26-35



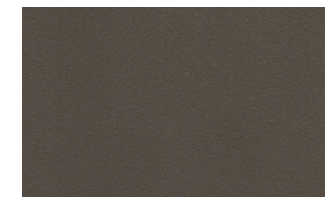
satin | 38/60014  
Medium Bronze | gloss level 26-35



satin | 38/60080  
Statuary Bronze | gloss level 26-35



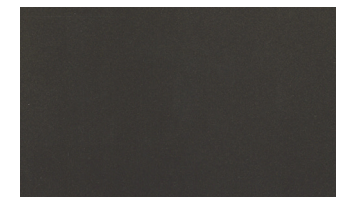
satin | 38/60090  
Dark Anodized Bronze | gloss level 25-35



metallic | 38/60060  
Medium Bronze



metallic | 38/96021  
Neptune Bronze



metallic | 38/68008  
Spartacus Bronze



fine texture | 38/68192  
Gold Brown



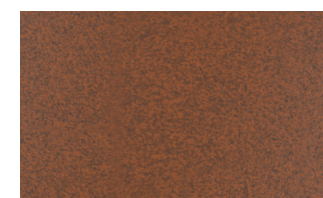
fine texture | 38/68130  
Greco



satin | 38/30041  
Redwood | gloss level 26-35



matte | 38/30028  
Brick Red | gloss level 16-25



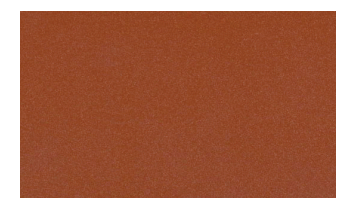
fine texture | 38/60499  
Weathered Steel Ambra **NEW**



metallic | 38/20014  
Deore 302 \*\*\*



metallic | 38/68015  
Venetian Copper



metallic | 38/60064  
Pearl Copper

\*\* To enhance the depth of finish, TIGER Drylac® recommends the application of a clear top coat. | \*\*\* Due to semi transparency of the product, the opacity of the color and finish will depend upon the substrate type and the film thickness. A film below 2.8 mils will exhibit limited hiding.



glossy | 138/20161  
Caution Yellow | gloss level 80-95 **NEW**



glossy | 138/50039  
Highland 305 | gloss level 80-95



glossy | 138/50040  
Highland 306 | gloss level 80-95



glossy | 138/50041  
Highland 307 | gloss level 80-95



satin | 38/50080  
Ivy Green | gloss level 26-35



satin | 38/50037  
Classic Green | gloss level 20-30



satin | 38/50110  
Hartford Green | gloss level 26-35



matte | 38/60006  
Aged Copper | gloss level 16-25



metallic | 38/50035  
Seafoam Green



metallic | 38/50043  
Highland 301



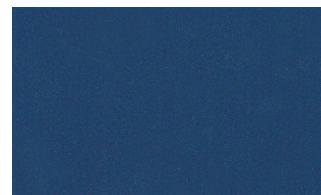
glossy | 138/40033  
Azzurro 307 | gloss level 80-95



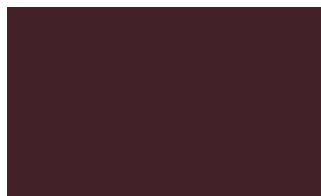
satin | 38/40051  
Military Blue | gloss level 20-30



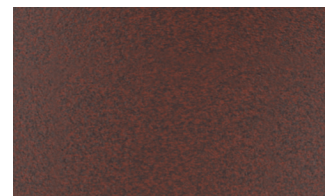
matte | 38/40025  
Interstate Blue | gloss level 16-25



metallic | 38/40127  
Pearl Night Blue



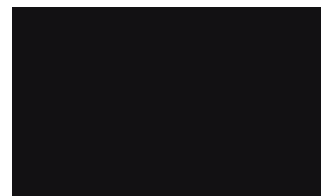
matte | 38/30033  
Boysenberry | gloss level 16-25



**NEW**  
fine texture | 38/34005  
Weathered Steel Viola



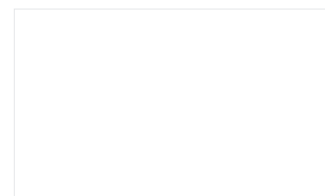
glossy | 138/80002  
Carbon 301 | gloss level 80-95



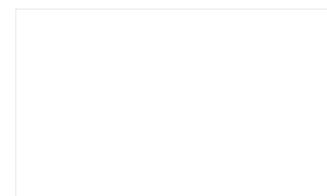
semi gloss | 138/81009  
Railing Black | gloss level 55-65



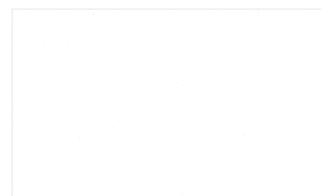
satin | 38/80020  
Jet Black | gloss level 26-35



clear | 38/00088  
Clear Matte SD



clear | 38/00001  
Clear High Gloss SD



fine texture  
all colors can be custom made in this finish

## BLM



BLM | 38/60500  
Carob Brown | gloss level 55-65



BLM | 138/60400  
Sudan Brown | gloss level 55-65



BLM | 38/16500  
Carlsbad Canyon Brown | gloss level 55-65



BLM | 38/50500  
Covert Green | gloss level 55-65



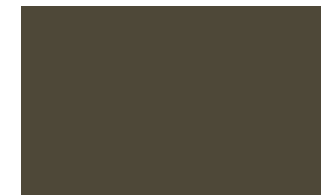
BLM | 38/52600  
Shale Green | gloss level 55-65



BLM | 38/51400  
Juniper Green | gloss level 55-65



BLM | 38/50400  
Beetle | gloss level 55-65



BLM | 38/53000  
Yuma Green | gloss level 55-65



BLM | 38/71700  
Shadow Gray | gloss level 55-65



## ANODIZED



anodized effect | 61/00015  
Silver (clear)



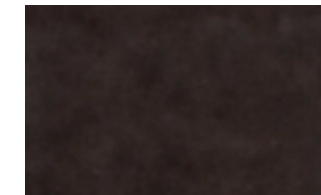
anodized effect | 61/78003  
Champagne



anodized effect | 61/78002  
Light Bronze



anodized effect | 61/68002  
Medium Bronze



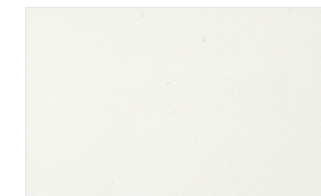
anodized effect | 61/68001  
Dark Bronze



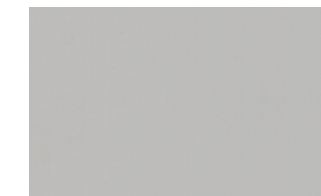
anodized effect | 61/80079  
Black



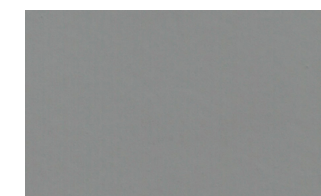
## PRIMERS



primer | 69/11001 **NEW**  
Dryprotector White | gloss level 2-6



primer | 09/73841  
OGF | gloss level 65-75

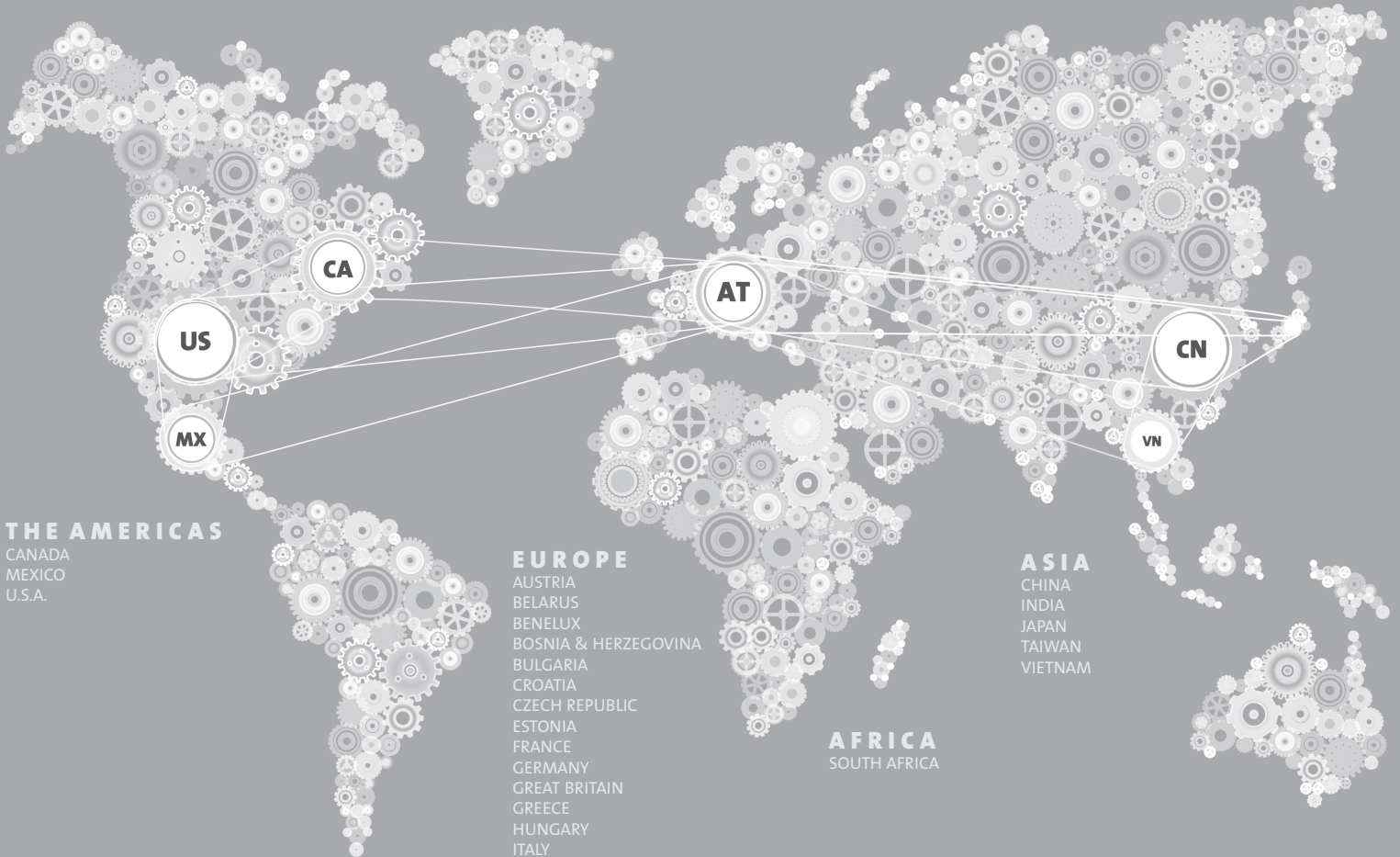


primer | 69/70000  
Dryprotector | gloss level 1-5



primer | 69/90500 (USA/Mexico)  
69/90701 (Canada)  
Zinc-Rich Primer | gloss level 60-90

# TIGER WORLDWIDE NETWORK



## THE AMERICAS

CANADA  
MEXICO  
U.S.A.

## EUROPE

AUSTRIA  
BELARUS  
BENELUX  
BOSNIA & HERZEGOVINA  
BULGARIA  
CROATIA  
CZECH REPUBLIC  
ESTONIA  
FRANCE  
GERMANY  
GREAT BRITAIN  
GREECE  
HUNGARY  
ITALY  
LATVIA  
LITHUANIA  
MACEDONIA  
POLAND  
ROMANIA  
SERBIA & MONTENEGRO  
SLOVAKIA  
SLOVENIA  
SWITZERLAND  
SPAIN  
TURKEY  
UKRAINE

## AFRICA

SOUTH AFRICA

## ASIA

CHINA  
INDIA  
JAPAN  
TAIWAN  
VIETNAM

999000070087

contact details available at

[tiger-coatings.com](http://tiger-coatings.com)



US/Canada: 1 (800) 243-8148

Mexico: 01 (800) 368-4437

