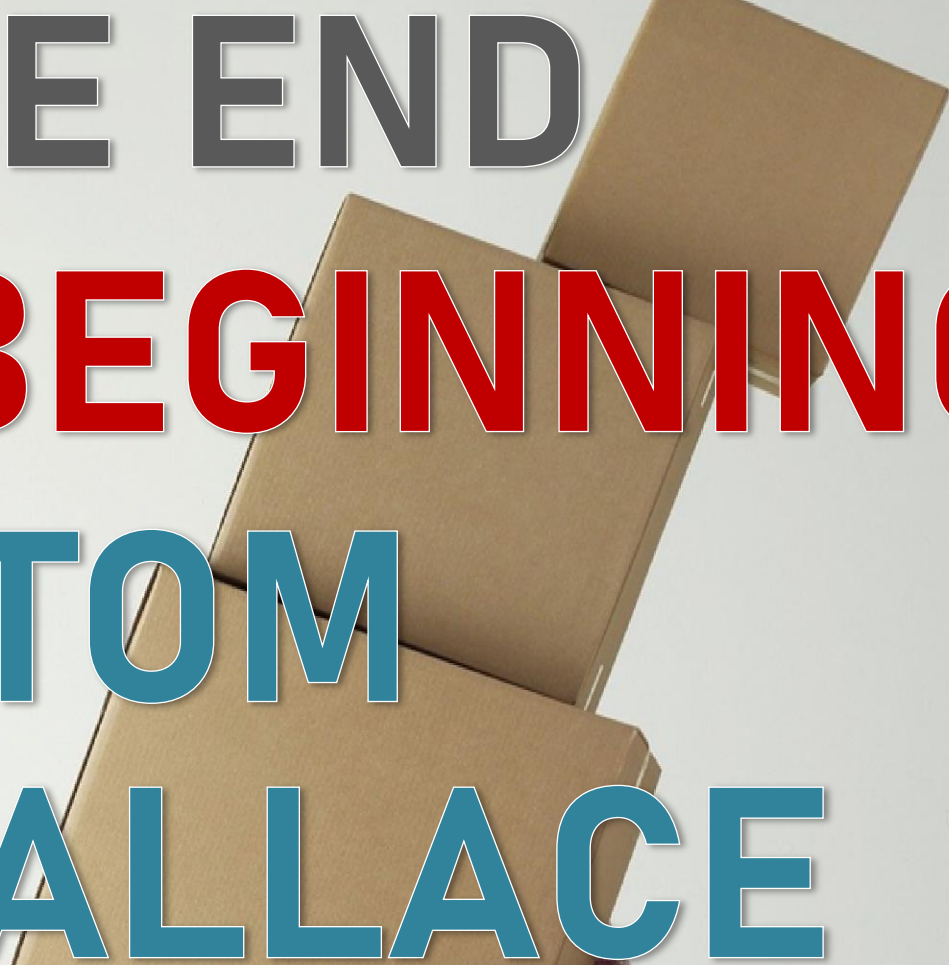


Moving up in life by someone else's rules.

A person wearing a red and white plaid shirt, blue jeans, and sneakers is carrying a large stack of four cardboard boxes. The boxes are stacked high, reaching above the person's head. The person is standing on a light-colored wooden floor against a plain white wall.

**THE END**  
**AND BEGINNING**  
**OF TOM**  
**WALLACE**

The end and beginning of Tom Wallace

A feature film by Johnathan Burns © 2020

CONTACT: Oceaniacom Films

+61 420 265 113 | [guy.perrine@auspolmedia.com](mailto:guy.perrine@auspolmedia.com)

# OVERVIEW

**TITLE:** THE END AND BEGINNING OF TOM WALLACE

**LOGLINE:** When a self-indulgent businessman sets out to claim the promotion of his career, he finds only one thing stands in his way - love.

**GENRE:** Romantic Comedy

**SETTING:** Present Day

**LOCATIONS:** City | Apartment | Road Trip

**LEAD:** Male

**LEAD:** Female

The end and beginning of Tom Wallace

A feature film by Johnathan Burns © 2020

CONTACT: Oceaniacom Films

+61 420 265 113 | [guy.perrine@auspolmedia.com](mailto:guy.perrine@auspolmedia.com)

# SYNOPSIS

The end and beginning of Tom Wallace follows the journey of a man from a self-indulgent, career focussed individual to a man who shares and enjoys life with the perfect woman he never knew he needed.

When Tom's routine life is interrupted by a mysterious man on the phone claiming to be from 'upper management', Tom can't resist the promotion on offer even if it means moving to the other side of the country over the Christmas holiday! All seems fair and well until Tom's plans are hijacked by Hannah, a quirky coffee vendor and neighbour who is desperate to hitch a ride with him to Colorado.

As plans fall apart, so to it seems does Tom's life as this ordinary road trip turns into Tom's worse nightmare...settling down in a relationship!

The end and beginning of Tom Wallace

A feature film by Johnathan Burns © 2020

CONTACT: Oceaniacom Films

+61 420 265 113 | [guy.perrine@auspolmedia.com](mailto:guy.perrine@auspolmedia.com)

# CHARACTERS

## TOM WALLACE

Tom Wallace is a successful supply broker who will spend an hour talking to a client and a minute talking to a neighbour! With his career focussed life, it isn't uncommon to see the 30 something year old businessman at work on a Sunday. For Tom, his career, routine and coffee are his addictions and he shudders at the very thought of settling down with the woman who should be in his dreams.

When a mysterious phone call from 'upper management' presents an opportunity for promotion, Tom takes little time to choose the ridiculous proposal to move across the country over Christmas. Determined, stubborn and extremely self-focussed, Tom is the kind of man who needs drastic circumstances to help him understand what really matters in life.

### ACTORS RECOMMENDED



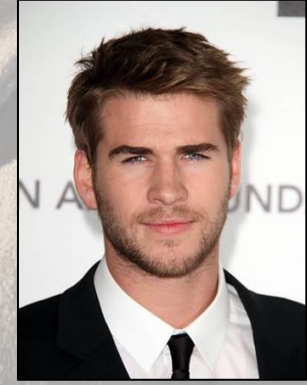
Nick Gehlfuss



Ismael Cruz Cordova



Carlos Valdes



Liam Hemsworth

The end and beginning of Tom Wallace

A feature film by Johnathan Burns © 2020

CONTACT: Oceaniacom Films

+61 420 265 113 | [guy.perrine@auspolmedia.com](mailto:guy.perrine@auspolmedia.com)

# CHARACTERS

## HANNAH

Hannah is a modest, good humoured and joyful young woman in her 30's who is one of those people who makes your day brighter just by being her. She is an overly optimistic, hardworking and happy-go-lucky kind of person who operated her own coffee vendor business. The only thing she has in common with somebody like Tom is the coffee she sells him every morning as he goes to work.

When Tom tells her about his move to Colorado, she jumps at the chance to hitch a ride and move back to her home town. Unbeknownst to both herself and Tom, the spontaneous decision will change both their lives in ways only fate could imagine. If it's spontaneity, joy and a new lease on life that you need, then you need Hannah and perhaps some of her coffee too.

## ACTORS RECOMMENDED



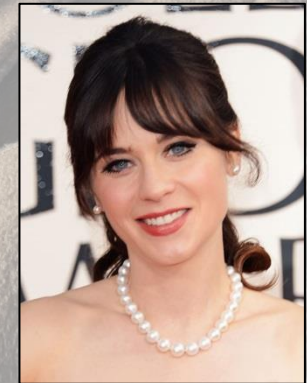
Natalie Morales



Anna Kendrick



Gugu Mbatha-Raw



Zoey Deschanel

# DISPOSITION



## IMPETUS

Joining Tom Wallace on his version of a 'normal' working day, it is obvious that his world revolves around himself and his career so when an unexpected promotion is on offer from 'upstairs', Tom follows his wallet. Moving across the country over the Christmas holiday is hard enough for Tom but things become even more challenging when his coffee vendor Hannah hitches a ride.

## FLIGHT

As Tom and Hannah struggle to see eye to eye, the road trip only begets problem after problem and before you know it, Tom's meticulous plans give way to Hannah's happy go lucky arrangements and the journey which began as a mere formality turns into the revolution of Tom's life.

## RESOLVE

With 'management' pulling all the strings, Tom and Hannah somehow make it to their destination. Having lost almost everything, Tom finds not only a new lease on life but room in his heart for two and he finally understands there is more value in people than there is in money.

The end and beginning of Tom Wallace

A feature film by Johnathan Burns © 2020

CONTACT: Oceaniacom Films

+61 420 265 113 | [guy.perrine@auspolmedia.com](mailto:guy.perrine@auspolmedia.com)

# FINANCIAL

## FORCAST BUDGET

The end and beginning of Tom Wallace is an entertaining, uplifting and fun Romantic Comedy suitable for a wide audience from teens to the elderly and has the potential to attract both theatre and streaming vendors.

This production relies upon acting and location with minor stunt work and prop requirements. The cast and technical requirements for production are minimal and the majority of scenes can be restricted to a handful of locations. As the film is set in our current time period, set dressing and wardrobe requirements also reduce budget requirements.

The end and beginning of Tom Wallace has an estimated production budget of US\$5 - \$10 million and is written to be shot in locations across the US.

# WRITERS STATEMENT

## INSPIRATION

Created and written by Johnathan Burns, **THE END AND BEGINNING OF TOM WALLACE** is inspired by aspects of life experienced by everyday people. The comedic elements provide a light hearted atmosphere for viewers whilst unveiling elements of Tom and Hannah's personalities. While they live through their journey, the viewer joins the chaos, excitement, comedy and romance experienced by the characters who are living through as strange an event as can be experienced in real life. It is my hope that this film is as relatable, enjoyable and memorable as the greatest romantic comedies, inspiring people to be open to others and the experiences they bring into our lives.

**WRITER: Johnathan Burns**  
Oceaniacom Films (AUS)

**Johnathan Burns**  
Queensland, Australia  
+61 450 781 841  
jbscriptwriter@gmail.com

**AGENCY: Oceaniacom Films (AUS)**

**Guy Perrine**  
New South Wales, Australia  
+61 420 265 113  
guy.perrine@auspolmedia.com

**AGENCY: Oceaniacom Films (US)**

**Bill Freas**  
United States  
(215) 470 0526  
auspolmediaUSA@gmail.com

**The end and beginning of Tom Wallace**

A feature film by Johnathan Burns © 2020

CONTACT: Oceaniacom Films

+61 420 265 113 | [guy.perrine@auspolmedia.com](mailto:guy.perrine@auspolmedia.com)