



CAN-143-Local interventions and Coral Eating Snails

Join WFCRC

The World Federation for Coral Reef Conservation
Vic Ferguson Executive Director
Reprinted 7/30/18

281.971.7703
512.986.1902

642 S. Commerce
vic.ferguson@wfcrc.org

Sebring, Florida 33870
info@wfcrc.org

For a **Diver**  Every day is **Ocean Day**

Local interventions boost coral's resilience to bleaching
June 18, 2018 by Tim Lucas, [Duke University](#)



A brain coral shows damage caused by coral-eating snails and the subsequent growth of algae. Credit: Duke Univ. Local conservation actions, like rounding up predatory snails, can significantly boost the resilience of corals to climate-induced bleaching, according to a study led by Duke University researchers.

IN PARTNERSHIP WITH



GLOBAL
ISLAND
PARTNERSHIP
LEADERSHIP | COMMITMENT | COLLABORATION | ACTION

The study, published June 18 in *Nature Ecology & Evolution*, comes at a time when scientists are deeply divided over whether local efforts to protect and manage [coral reefs](#) are enough to help stem the global tide of thermal bleaching that's decimating corals worldwide as ocean temperatures continue to warm.

To test whether local actions can make a difference, the Duke-led team focused on one threat to reefs that is often controlled by local managers—populations of coral-eating animals like snails and starfish that have become too abundant.

"At high densities, these coral-eating animals, or 'corallivores', can cause low-grade but chronic stress to corals. Some of them are like Dracula, constantly sucking the energetic reserves out of corals and leaving them less equipped to deal with harsh environmental conditions like extreme warm temperatures and bleaching," said Elizabeth Shaver, a 2018 doctoral graduate of Duke's Nicholas School of the Environment, who is now a coral restoration scientist with The Nature Conservancy's Reef Resilience Program.

To get a global sense of how managers deal with this threat, the researchers surveyed more than 30 coral [reef](#) management agencies worldwide, finding that many agencies reduce local corallivore populations in their sites. The researchers then mimicked managers by manually removing a voracious and common coral-eating snail from corals in the Florida Keys during a three-month spike in [ocean temperatures](#) in 2014. That warmup caused widespread coral bleaching across much of the eastern Caribbean and Gulf of Mexico.

The researchers focused their efforts on brain corals, which were found in a survey of six coral reefs in the Florida Keys to be particularly susceptible to predation by the snail.

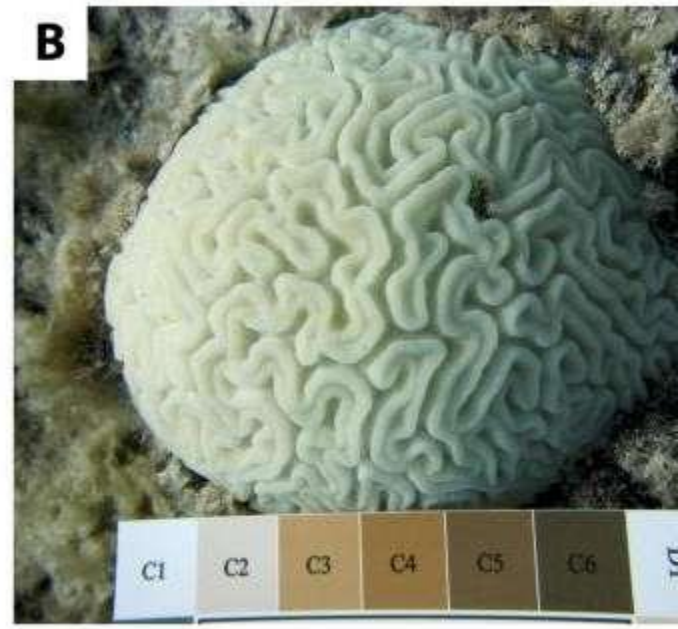
"The idea was to see if removing these snails helped corals withstand and recover from [warm temperatures](#) and bleaching compared with corals that had average or naturally high densities of snails. And it did," said Shaver.

"When snails were removed, corals experienced only 50 percent bleaching. Corals that still had high snail densities experienced near 100 percent," Shaver said.

In November 2014, they returned to the reefs after water temperatures cooled down and measured the extent of dead tissue on the corals.

IN PARTNERSHIP WITH





Healthy brain coral at left, and one that has experienced 100 percent bleaching on right. Credit: Duke University
"We found that if a coral experienced only mild to moderate bleaching, as they did when snails were removed, it recovered almost completely," said Brian Silliman, Rachel Carson Associate Professor of Marine Conservation Biology at Duke's Nicholas School of the Environment.

"But if it experienced severe bleaching like the corals with high snail densities, tissue recovery was reduced by more than 80 percent," Silliman said. "Some of these corals completely died, turning into algae-covered underwater basketballs. Removing or reducing the populations of snails played an important role in determining these outcomes."

The new findings challenge several recent large-scale analyses arguing that local impacts and management have little effect in protecting reefs from climate-induced bleaching, Silliman said.

"Tens of millions of dollars have been invested in local coral reef conservation over the last 40 years. But more and more people are now saying we should end this approach and instead put most of our money into global efforts to reduce greenhouse gas emissions because there's no evidence that local actions are making enough of a difference," he said.

"These new findings reopen the discussion and provide a ray of hope for corals by showing that local interventions do make a difference."

"Very few local interventions have been tested for their ability to enhance coral reef resilience," Shaver said. "We found one simple solution by reducing coral predation stress, which can be done through removals or possibly in marine protected areas where studies show [coral](#)-eating invertebrates are naturally less abundant."

IN PARTNERSHIP WITH



The findings may also be important because the world's climate is projected to continue changing even if carbon emissions were drastically reduced today.

"We need conservation dollars for both global and local efforts," said Shaver, "so we can identify other resilience-enhancing approaches and arm local managers with tools to protect their reefs and resources."

Deron E. Burkepile of the University of California, Santa Barbara, co-authored the study.

Explore further: [Only 1 pct of Japan's biggest coral reef healthy: survey](#)

More information: "Local Management Actions Can Increase Coral Resilience to Thermally Induced Bleaching," Elizabeth C. Shaver, Deron E. Burkepile and Brian R. Silliman; *Nature Ecology & Evolution*, June 18, 2018. [DOI: 10.1038/s41559-018-0589-0](#)

Journal reference: [Nature Ecology & Evolution](#)

Provided by: [Duke University](#)

Read more at: <https://phys.org/news/2018-06-local-interventions-boost-coral-resilience.html#jCp>

For additional reading see [The WFCRC Document Gallery](#) for articles about:

- Public Service Announcements (PSA)
- Coral Alert Network (CAN)
- Emergency Reporting Reports (ERR)
- Call to Action (CTA)
- Marine Protected Areas (MPA)
- Marine Life Alert (MLA)
- Seismic and Oil Production Threats
- Natural Science Reports (NSR)
- Oil Spill Alerts (OSA)
- And other miscellaneous documents

IN PARTNERSHIP WITH

