



Lamar's Fabrication, Inc.



Michael Lamar, CEO
 474 Cary Drive
 Beech Island, SC 29842
 Phone: (706) 513-1992
 Fax: (803) 613-0706
 Email: Michael.LFab@gmail.com
 www.LamarsFabrication.com
 Established 2008
 DUNS # 828415468
 Cage Code: 58E94

Bringing your projects to life.

ABOUT OUR COMPANY AND MISSION

Lamar's Fabrication shop is a 40'x80' steel prefabrication facility located in Beech Island, SC which houses a 20 ton overhead crane, 8 bank welder, CNC plasma table, and various other tools. We are conveniently located near the I-520 bypass on the outskirts of Augusta, GA which makes for no hassle shipping. Our clients range from industrial to commercial and from the east to the west coast. Our goal has been to form relationships with our clients by offering exceptional services, concentrating on customer satisfaction while maintaining the highest quality products. . As we look forward to continued growth, we wish to continue this same service of commitment and quality on your next project.

TESTIMONIES FROM OUR CLIENTS

L-Fab's 3D modeling services were able to catch problems to be addressed before rework and scheduling delays were required.

-Scott Kahler, PMP - Elanco

Lamar's performance is above average and they worked diligently to deliver an outstanding product.

-Bob Jackson, CPM - Teamway Builders, Inc

Core Competencies

- Prefabricated Process Pipe
- Prefabricated Structural Steel

Types of metals include:

- Carbon steel
- Stainless steel
- Chromemoly
- Inconel
- Hastelloy

Types of welding include:

- GTAW
- SMAW
- FCAW

Other Services include:

- CNC Plasma cutting
- CAD Detailing and Design
- 3D Modeling

Partial Client List

- GT Industrial Contracting, Inc.
- Bilfinger Industrial Services, Inc.
- Mitchell's Oil Field Services, Inc.
- Wood Group, PLC
- Petty Construction Co., LLC
- Teamway Builders, Inc.
- Continental Resources, Inc.

NAICS Codes •332312 • 332996 •331210 •236210 •236220

For References visit www.LamarsFabrication.com

Past Projects



**Continental Resources, Inc.
Manifold 2015**



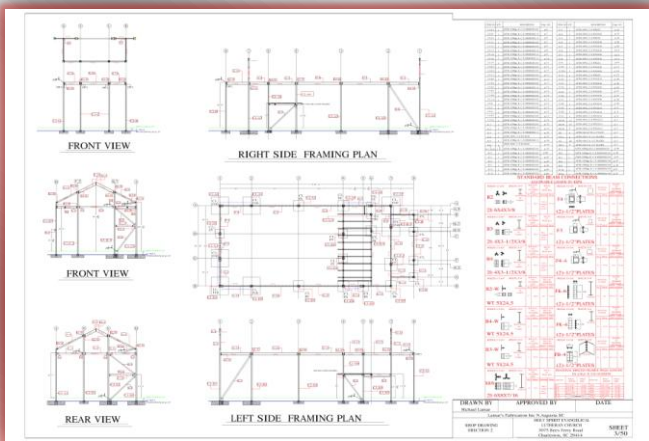
**Elanco
Chill Water Line 2016**



**Teamway Builders, Inc.
Holy Spirit Church 2016**



**Lamar's Fabrication, Inc.
Fabrication Shop 2017-2018**



CAD detailing of Holy Spirit Church



CAD detailing of Fabrication Shop