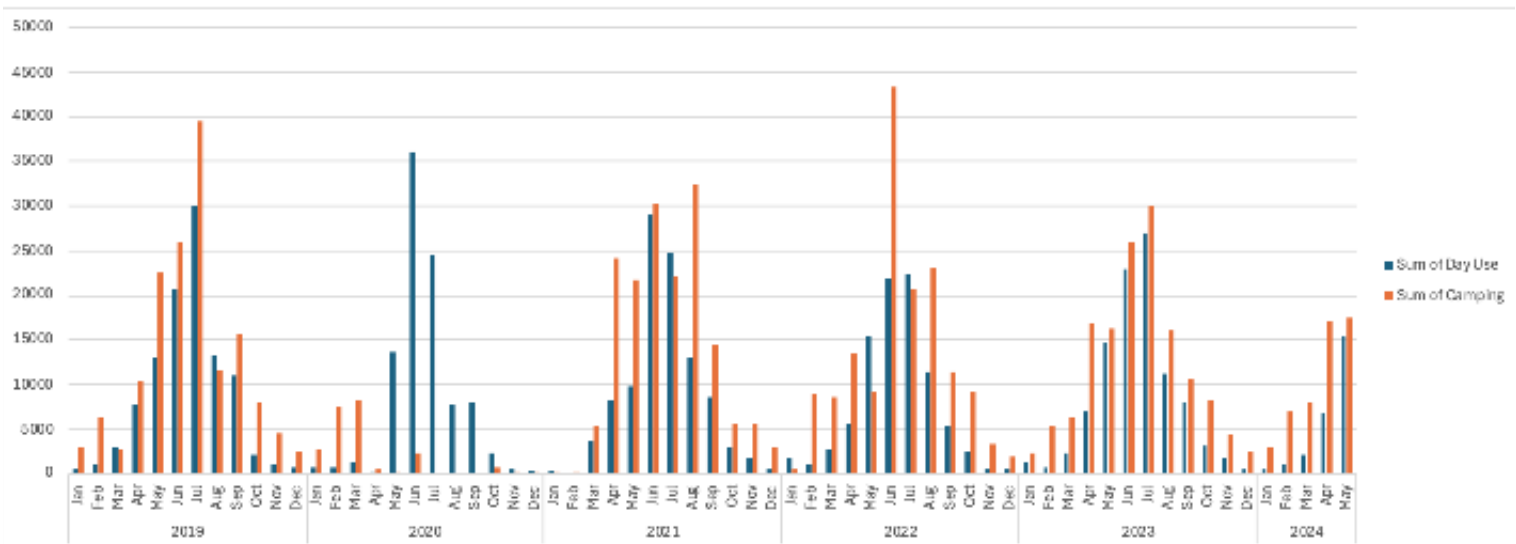


# Economic Effects of the Pipeline Project

## Fact Sheet



- Since 2019, over 2 million tourists have visited Ute Lake, the village of Logan, and Ute Lake State Park.
- The Village of Logan has approximately 1,000 people, a population that goes up ten times during the summer months.
- In February 2022, visitors to Ute Lake State Park were under 5,000. In July of that year, that number climbed to over 120,000 visitors.
- Ute Lake brings about \$50 million in annual tourist expenditures to Logan and surrounding areas.
- If Ute Lake becomes unusable, the Village of Logan and its residents would sustain losses of 95% of revenue, ultimately killing the Village and forcing people to move away, devastating the State Park and causing crippling tax revenue declines for the Logan School District and Quay County as a whole.
- The devastation to Logan's economy would have a ripple effect on the town of Clovis, as many Logan residents and tourists also go to Clovis to shop, for appointments, etc.



*Ute Lake State Park revenue graph provided by New Mexico State Parks*