



# The Criterion

NORTHEAST -CHAPTER-PROFESSIONAL CAR SOCIETY

Issue No. 9

Winter, 1989

## ROAD TRIP FINDS JEWELS. . . .

Late last summer, Chapter members FRED GOERLITZ and LEO MAREN journeyed to the northern farm hills in Sussex County, NJ, following a rumor that there was still in active service, a couple of Cadillac ambulances. Since both are state-certified EMTs and active in the local rescue scenes in their hometowns, this story simply HAD to be verified. And verified indeed it was! For sitting in a rear yard, was an exclusive Cadillac fleet, with not one of those hideous truck-types to be seen anywhere!

Since there is no 'headquarters building', per se, the vehicles are housed on the emergency squad captain's farm. Situated in front of the barn was a 1970 Superior Cadillac 51-inch Rescuer. Finished in silver over yellow, the car has no roof beacon of any type. The ambulance was basically stock, with the usual array of emergency lighting and high mileage. The car was also missing its fender skirts.

A peek into the barn revealed a red 1976 Cadillac, also a Superior high-top. This car was in much better condition. Its paint was finished in silver over red, and featured fender-mounted side warning lights in addition to a rare, roof mounted Federal model #66 mechanical siren/light combination. As this car was being photographed, the boys inquired if there were any other such gems on the property. When the answer was in the affirmative, it was decided NOT to make the attempt. It seems there was a 1971 Miller-Meteor somewhere off in the fields, joined by another unknown make....seems that one of the farm owners was out there with his shotgun, practicing! A smart move at that, fellas!

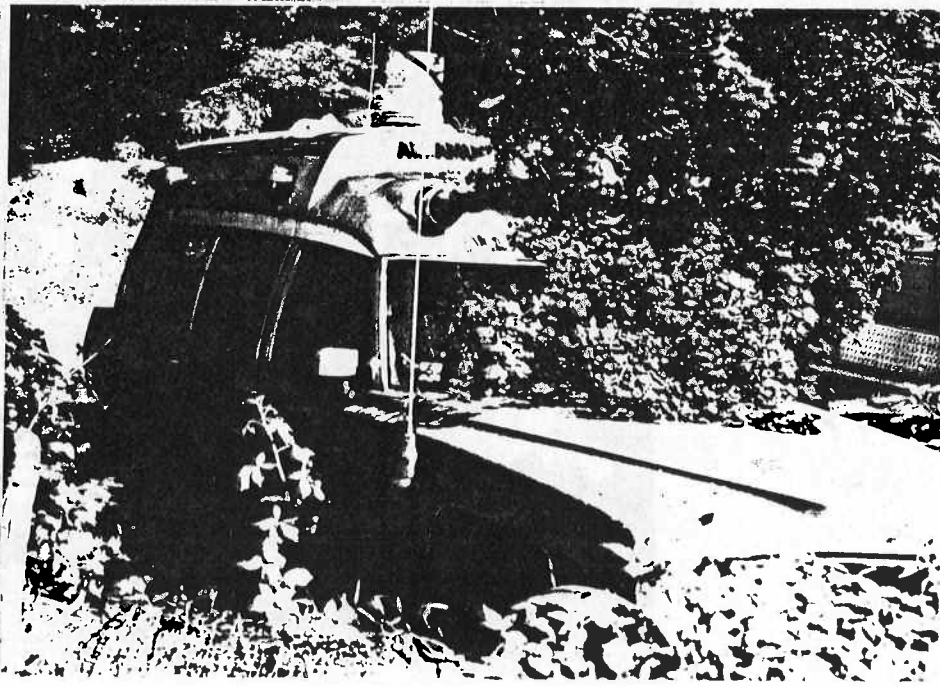
1970 Superior Rescuer  
poses in front of barn  
during recent photo  
expedition.





Nosed from its parking space, 1976 Superior still serves the people of Kittatinney-Fredon, New Jersey. It is not known where any of these vehicles previously served.

Miller-Meteor Lifeliner sits forlornly in fields, apparently having answered its final call. Roof lights all still intact.



MAKE IT 4 IN A ROW THIS SPRING. . . .

We know it's a little early to be thinking of Spring auto shows, but this just cannot wait! First there's Englishtown, followed by Carlisle, and then Hershey. Now, there's another new kid...Yorktown Heights, New York. Seems that Chapter member TONY CUTRONE is producing this show, to be held on Mother's Day weekend, May 12, 13, and 14. The show will be held at the Yorktown Grange Fairgrounds and features lighted grounds, fully secured, with electricity available. In addition, lodging is close by and there is plenty of free parking. Tony tells us that 200 cars are expected for auction, with 800-plus flea market spaces, both indoor and outdoor. Also included will be a free vendor directory, buffet for vendors and entertainment. Now for the good stuff...Tony would like to see as many professional cars as possible for a special display, followed by an exclusive professional-car only buffet. But we need our vehicles in order to make this work. That's why we are building this activity NOW, rather than announce it during, say late March or April. We'll certainly keep the Chapter informed of developments... T.C. Productions, 19 Allamuchy Trail, Andover, NJ 07821; Telephone 201-347-2028 for additional information.

. . . AND THEY ARE STILL OUT THERE. . .

Member KEN POZAROWSKI gives us this lead, located in a farm field in eastern Pennsylvania. It's a solid, complete 1951 Flexible Buick hearse that has been sitting in said field for about ten years. The car has 35K original miles, comes complete with its own casket, and is available for a few hundred dollars.

In a local junk yard, Ken also ran across a 1955 or '56 Cadillac hearse, missing the right/front fender. It is a parts-only type car at this time. It is at Siburns Auto Salvage in Stroudsburg, PA 717-421-3086. Ken adds a further note that Siburn may not even know about this car, as it is a very large operation. The car sits on top of the mountain.

How about these? A 1930s Packard ambulance, very rough, and a 1957 Superior Cadillac ambulance, with 50K miles. This car is complete and original, including cot. It was last used in 1979 as a race track ambulance. It is a little rough and the owner is open to offers. They are both located deep in the heart of Pennsylvania wood country, so Ken recommends a call to him for further information: 717-992-5199.

HERE 'N THERE . . . .

- + A tip of the hat to MID ATLANTIC CHAPTER for plugging us in their recruitment drive letter.
- + From PAUL PADGETT...who has just completed a total restoration on a 1966 Superior Cadillac side loader. He is also in the process of restoring a 1964 Cadillac Fleetwood 60 sedan, with a Spring '89 target date. We look forward to seeing both of these at future Chapter events. How 'bout some photos for the Criterion!
- + We would like to feature an article or two on older funeral cars and limos still in service, similar to this issue's one on ambulances. Any takers?

....ATTENTION, MEMBERS....

Once again, it will be time to update our annual membership roster. Please, if you have any additions, deletions, or corrections to your professional car fleet, be sure to contact Membership Director Fran Jast at 201-280-1499 after 6 PM.



Interior view of cover car shows suicide door hinging and room for attendant seating rather than the traditional squad bench configuration. Car is basically solid.

**MARKETPLACE. . . . .**

For Sale: 1975 Miller-Meteor Landau Traditional; black, 22K miles, excellent cond; AM/FM radio; p/s p/b p/w all new tires; original owner, need room for new coach. Frank Kapr Funeral Home, 417 Pittsburgh St, Scottdale, PA 15683 412-887-6110. Asking \$7000.



## Northeast Chapter

THE PROFESSIONAL CAR SOCIETY, INC.

PRESIDENT  
CRITERION EDITOR

Craig Stewart  
273 Hillcrest Avenue  
Wood-Ridge, NJ 07075  
(201) 438-1757

VICE-PRESIDENT

Philip Jast  
1108 $\frac{1}{2}$  17th Avenue  
Wall, NJ 07719  
(201) 280-1499

SECRETARY  
TREASURER  
MEMBERSHIP DIRECTOR

Frances Jast  
1108 $\frac{1}{2}$  17th Avenue  
Wall, NJ 07719  
(201) 280-1499

The Northeast Chapter of the Professional Car Society operates under a charter granted by the Society's Board on August 19, 1986. The Chapter serves PCS members in New Jersey, New York, and Pennsylvania. Subscription to this newsletter is by membership in the Chapter through the Membership Director listed above. Membership in the Professional Car Society, Incorporated, is a prerequisite to membership in any of its chapters.

The Criterion is published at 273 Hillcrest Avenue, Wood-Ridge, New Jersey 07075, on a nominal schedule.

FIRST CLASS MAIL

THE PROFESSIONAL CAR SOCIETY, INC.  
273 Hillcrest Avenue  
Wood-Ridge, NJ 07075  
(201) 433-1737

FRANCOIS JACOB  
1108 17th Avenue  
Wall, NJ 07719  
(201) 280-1499

FRANCOIS JACOB  
1108 17th Avenue  
Wall, NJ 07719  
(201) 280-1499

CRIVELLO EDITOR

NORTHEAST CHAPTER  
PROFESSIONAL CAR SOCIETY  
273 Hillcrest Avenue  
Wood-Ridge, NJ 07075

MEMBERSHIP DIRECTOR



Presently out of service and sitting behind a New Jersey gas station is this 1968 Superior Cadillac 51-inch Rescuer ambulance. Car formerly owned by Glenwood-Pochuck First Aid.

Photo by Leo Maren.