

# Worcestershire

Federation of WIs



Recommended Speakers'  
Brochure 2023/24



# Extend your support network



Let us help you extend your support network by assisting the older people you care about with:

- Light housework, shopping, and attending appointments
- Keeping the garden tidy and DIY tasks up to date
- Somewhere to turn to with a Dementia diagnosis
- Accredited advice on financial and legal support available
- Working out bills and completing important paperwork
- Staying mobile and looking after their feet
- Befriending, social activities, and much more

Free up valuable quality time together by contacting us at:





## Extend your support network

Life can feel like a balancing act, caught between caring for your own children, your parents, and other loved ones. Balancing your responsibilities whilst making sure that those who depend on you receive the care and attention they need, can be both challenging and demanding.

Age UK Herefordshire and Worcestershire offers a wide range of support, to provide you with a spare pair of hands whilst helping the older people you care about maintain their independence for longer. This can include help around the home, running errands, gardening, DIY, footcare, general administration, befriending, keeping active and much more.

We also have extensive Dementia support services that include free cafés for a casual cuppa and a chat, to meeting centres and cognitive stimulation sessions - that aim to slow down the progression of Dementia.

To find out how we can help turn responsibilities into quality time with your loved ones, please visit our website: [www.ageukhw.org.uk](http://www.ageukhw.org.uk) or call our friendly referral hub on **0800 008 6077**.

As a registered charity we rely heavily on the support of volunteers. If you can spare any time to support us with our many opportunities, we would love to hear from you at: [volunteering@ageukhw.org.uk](mailto:volunteering@ageukhw.org.uk)

## Bluebird Care Worcester and Wychavon offering the very best care in people's own homes.

At Bluebird Care Worcester and Wychavon, we have a wonderful team of compassionate and highly trained care assistants who genuinely love to care. They are committed to helping people maintain their independence and live engaged, fulfilling and comfortable lives. It is this commitment to excellent care and giving people the opportunity to be safe and independent in their own homes that really sets Bluebird Care apart.

All our care assistants are fully vetted, and police checked and undergo extensive training to enable them to care for customers getting older or with disabilities. We provide detailed care plans, individually tailored to our customers' needs and we regularly review individual customer care packages to ensure that our customers' needs are constantly being met. Ongoing training and support enables our care assistants to provide a wide range of care services

including personal care, help getting up or going to bed, help washing, etc. as well as meal preparation, domestic help, trips to see friends or relatives, shopping or help to attend leisure activities. Our care assistants are well-trained in recognising loneliness in older people and are particularly adept at providing companionship as well as personal care. We like to think that we are a friendly face to turn to and someone whom our customers can share their lives with.



We can also provide 24-hour live-in care as an alternative to residential care if necessary. Our home care service is entirely flexible; there is no long-term contract and care is tailored to the individual needs of each customer.



If you would like to find out more about the services that Bluebird Care Worcester and Wychavon can offer you or your loved one call or email us today on: **01386 764 830** or [worcesterandwychavon@bluebirdcare.co.uk](mailto:worcesterandwychavon@bluebirdcare.co.uk)



“

Bluebird Care - as near to perfect as possible

”

## Home and Live-in Care, just as you like it.

You love your home and you feel safe there. Needing additional care and support shouldn't change that.

You may be in a situation where you need an extra pair of hands, or you may have complex needs that require more dedicated care. Our well-trusted care packages are built around you and your individual needs which means that you and your family can rest assured you'll receive care and support exactly as you need.

Our care ranges from a 30-minute daily visit through to full Live-in care.

**Call our friendly team today.**  
Bluebird Care Worcester & Wychavon  
[bluebirdcare.co.uk/worcester-wychavon](http://bluebirdcare.co.uk/worcester-wychavon)  
01386 764830  
[worcesteraandwychavon@bluebirdcare.co.uk](mailto:worcesterandwychavon@bluebirdcare.co.uk)



# Home

is where the heart is

*Let's keep it there*







# Worcestershire Federation of WIs

## Recommended Speakers Brochure 2023/24

**WI House**  
Worcestershire Federation of WIs  
7 Elgar Business Centre  
Moseley Road  
Hallow  
Worcester WR2 6NJ

**Office Opening Hours**  
Monday – Thursday: 9.30am – 1.30pm  
Closed on Fridays and all Bank Holidays

**Telephone**  
01905 641658

**Telephone Line**  
Monday, Tuesday and Thursdays: 9.30am – 12.30pm  
(lines closed every Wednesday)  
Closed on Fridays and all Bank Holidays

**Federation Administrator**  
Fiona Layton: [admin@wfdwi.org.uk](mailto:admin@wfdwi.org.uk)

**Assistant Federation Administrator**  
Trudi Tayloe: [events@wfdwi.org.uk](mailto:events@wfdwi.org.uk)

**Website**  
[worcestershiredwi.org.uk](http://worcestershiredwi.org.uk)



Follow us on Twitter: @worcsfedwi  
Facebook: Worcester Federation of WIs  
Blog: <https://worcsfedblog.wordpress.com>

Cover image thanks to - G Cooper, Little Witley WI  
Above image: Worcester Cathedral - by Travellight at shutterstock.com

WI House .....	05
Helpful Notes .....	08
Section 1 - General Speakers.....	09
Section 2 - Speakers from Charities & Organisations.....	28
Section 3 - Welfare & Other Organisations.....	35
Section 4 - Speakers from WFWI Sub – Committees.....	37
Form - WI to send to Speaker.....	40
Form - Speaker to return to WI.....	41
Notes .....	44

## Lancemedia Group Ltd

**DESIGNER**  
Holly Daniels  
Email: [holly@lancemediagroup.co.uk](mailto:holly@lancemediagroup.co.uk)

**ADVERTISING**  
Michelle Breen  
Tel: 01536 334224  
Email: [michelle@lancemediagroup.co.uk](mailto:michelle@lancemediagroup.co.uk)

This book is the copyright of the Worcester Federation of WIs.

No portion may be reproduced by any process without written permission.

Open 7 days a week.

Gardens:

Summer 9am - 5pm

Winter 9am - 4pm

Tearoom:

Summer 10am - 5pm

Winter 10am - 4pm

Adults £5.95

Children £2.95

Under 2s Free



Whitlenge  
Tea Room & Gardens

Whitlenge.co.uk

Tel: 01299 250720

Tearoom: 01299 250669



"Such a magical place!"



**"Beautiful gardens and a great day out"**

Explore three acres of inspiring gardens, walk our turf labyrinth, see our water walls and moon gate, showcased on T.V by Alan Titchmarsh. Bring your little ones and dress up as gnomes and fairies, then look for enchanting fairy gardens and fairy doors galore, or for special events follow themed trails, a favourite for Grandchildren.

**Come & Enjoy Children's Trails Each School Holiday**



Last hot food orders and entry to the garden 4pm (Summer) +3pm (Winter)  
PRICES MAY VARY FOR SPECIAL EVENTS.



HOME OF

**Creative Landscapes**

We enjoy projects of all sizes from window boxes to family estates.  
For visual inspiration visit our show gardens at Whitlenge,  
and watch our "before and after" screen presentation in our tearoom.

[www.creativelandscapes.co.uk](http://www.creativelandscapes.co.uk)



For the perfect day out for all the family, visit our inspirational themed gardens.

Welcome to our “little piece of heaven on earth”

That’s what most people say after they’ve spent a while strolling through our award-winning show gardens and then browsing around the nurseries selecting just the right plants for the right place.

Wander through three acres of beautifully landscaped gardens situated in the picturesque Worcestershire countryside. The gardens surround a 17th century cottage which was once part of the Bishop of Worcester’s estate.

The gardens are planted with mature trees, shrubs, perennials, alpines, heather’s etc, chosen to give all year round colour and interest. Take in the sounds of the many water features, from the peaceful ripples of the mill stone bubbler to the babbling of the beautiful man-made waterfalls and a full 100 foot stream and pond system. See the brand new castle complete with 4 turrets, water wall with vertical planting before embarking on a mystical journey from the bog garden with the gigantic leaves of Gunnera from midsummer through to Autumn, and through our enchanted fairy village.



*Passionate British Flower Grower*

## **Bespoke Floristry**

*Weddings*

*Funerals*

*Gift Bouquets*

*Seasonal Workshops*

*Picking Parties*

*British Flower Demonstrations*

**Tel: 07966 440860**

**Email: [anna@flowersbyannabrian.co.uk](mailto:anna@flowersbyannabrian.co.uk)**

**[www.flowersbyannabrian.co.uk](http://www.flowersbyannabrian.co.uk)**

Social media:   @Flowers by Anna Brian  
Sandal Lodge, Hanbury Rd, Droitwich, WR97DX

## **Elgar Coaches**

**Holidays & Day Trips**

**Private Hire 29 to 53 seat coaches**

Phone 01905 333349 for your copy of our brochure , quote for your bespoke coach hire.

Follow us on FaceBook Elgar Coach Tours.

**[www.elgarcoaches.com](http://www.elgarcoaches.com)**



## RECOMMENDED SPEAKERS' BROCHURE 2023/24

### HELPFUL NOTES

1. Many Speakers today require booking well in advance and WIs are advised to plan their programmes at least six months ahead. When booking Speakers please check with them, fees and travelling expenses, in case they have changed since publication.
2. Remember when booking Speakers to:
  - Give subject of lecture and time allocated for them to speak
  - State - Date, Time, Day and Place of meeting
  - State approximate number expected in audience
  - Contact ALL Speakers in good time, including WIAs and County Sub-committee Members
3. Telephone bookings should **ALWAYS** be confirmed in email/writing and copies kept.
4. A ready-prepared form to Speakers is available at the back of this brochure.
5. Reminders to Speakers should be sent at least two weeks before your meeting and most Speakers appreciate clear directions to your Hall. Parking facilities for your Speaker near to the door of the Hall are also appreciated.
6. Please ensure mobile contact details are exchanged with Speaker in case of emergency / last minute changes.
7. The Federation would be pleased to have suggestions for additions to the panel of Speakers and would welcome favourable comments.
8. In the event of a WI needing to make a complaint against a speaker that is listed in the brochure, please submit complaint details to WI House whereupon the matter will be investigated. The Federation will remove a speaker if after investigation there has been three separate complaints made.
9. The Board of Trustees and Sub-committee members are pleased to attend meetings and talk about their own particular aspect of the WI. Expenses for these visits are the responsibility of the WIs.
10. **Where Speakers request a Donation to Charity in lieu of a fee, cheques MUST be made out to the Speaker and NOT the Charity. HOWEVER, should a speaker request that payment be made directly to their charity, WIs are advised to request an invoice from the charity which clearly states the name of the speaker and that payment is for the services provided.**
11. Each WI will receive a free copy of this brochure, extra copies to WI members may be available from WI House, price £1.00 each, plus postage.
12. This brochure is available for WI officers to view on SharePoint.



**SECTION 1 – GENERAL**

- \* denotes “Short Notice” Speaker  
 ✓ denotes recommendation received  
 → denotes New Speaker for this year

Name and contact details	Subject(s)
* Altair de Almeida Sunflower 218 Elgar Avenue Malvern WR14 2HB Tel: 07855108777 Email: altair@wellbeingvibes.com Website: WellBeingVibes.com Fee: £60 inclusive of travel within 10 miles of Malvern; £5-10 for longer distances In person and Zoom talks given (except Nos 5+8)	<ol style="list-style-type: none"> <li>1. How to have a facelift without surgery – simple techniques to enhance your face and neck</li> <li>2. How to avoid cancer and stop it returning – based on 48 years in the field and cutting-edge research</li> <li>3. How to release stress, learn to relax and increase stamina – Tai Chi based work</li> <li>4. Acupuncture- pain relief demonstration on volunteers and talk</li> <li>5. Shiatsu- stress relief and relaxation – demo and exchanges in the group</li> <li>6. Angelic Reiki- relaxation, demo and talk</li> <li>7. Tai Chi and Chi Kung– talk and gentle exercise to calm your mind and improve balance</li> <li>8. Biodanza- guided dance for fun</li> </ol>
Robert Arley 5 Garnstone Drive Weobley Herefordshire HR4 8TH Tel: 07973636024 Email: severnpx@tiscali.co.uk Website: www.robatarley.com Fee: £60 + £5 - £10 travel In person talks only	<ol style="list-style-type: none"> <li>1. The Great Exhibition of 1851: Hyde Park pivots the world’s future.</li> <li>2. Producing the BCC’s ‘Antiques Roadshow’</li> <li>3. Devising the ‘M5 Sights Guide’ – exploring and explaining a holiday route</li> <li>4. Viewing figures – TV industry obsessions with winning ratings.</li> <li>5. ‘We did our bit – WW2 veterans testimony captured on camera</li> <li>6. ‘Flog It’ battles ‘Bargain Hunt’ – collectibles off and on camera</li> <li>7. Producing Children’s ITV – Roland Rat to Ringo Starr.</li> <li>8. Worcester’s Media Mile – one city, many cameras – the sit-down version.</li> </ol> (More at: <a href="http://www.robatarley.com">www.robatarley.com</a> )
→* Christine Armstrong 28 Hallow Lane Lower Broadheath Worcester WR2 6QL Tel: 07708915345 Email: christine@christinearmstrong.co.uk Fee: £35 In person and Zoom talks given	<ol style="list-style-type: none"> <li>1. Cycling the world. A 2-year bike trip post-retirement</li> <li>2. By bus through Central America. 7 countries in 7 weeks.</li> <li>3. Cycling in Japan. An 8-week odyssey.</li> <li>4. New Zealand on a 3-month cycle tour</li> <li>5. Sydney to Melbourne by bike</li> <li>6. The North Sea coast from Denmark to France</li> <li>7. Fort Lauderdale to Houston on 2 wheels</li> <li>8. Across Europe by bike from England to Serbia</li> </ol>

Mark Billen  
Oak House  
Chestnut Close  
Fernhill Heath  
Worcester WR3 7SZ  
Tel: 01905 456068  
Email: marksplays@yahoo.co.uk  
www.henryandfred.co.uk  
Fee: £40 donation to Action for  
Children+ no travel expenses  
within Worcestershire  
In person talks only

1. Creating Books for Children - Henry Bear and his Cousin Fred feature in a series of children's books created by Mark. Together with some lovable teddy bears he shows how the stories are created and tells of the bears' adventures.
2. Working as a Playwright - Mark specialises in writing comic plays for schools and youth drama groups to perform. His plays have been performed internationally. Mark talks about how a play can be created, the constraints that have to be considered and the influences that have inspired him. Given in aid of Action for Children.
3. Tales from The Forest- Mark is the author of two books 'Tales from The Forest' and 'When the gorse is in bloom...!' Both books recount stories from the countryside of not so long ago. The tales are based on life in one of the forest regions of southern England. In his illustrated talk Mark introduces a range of eccentric characters who bring a great deal of humour as well as moments of sadness.

---

\* Mike Bottomley  
31 Sandfield Road  
Churchdown  
Gloucs GL3 2HD  
Tel: 07833678862  
Email: bottomley@blueyonder.co.uk  
Fee: £50+50ppm travel  
In person talks only

1. Queen Katherine Parr – The life and loves of the last wife of Henry VIII
2. Nurse Edith Cavell – Britain's forgotten heroine
3. Rudyard Kipling – The extraordinary life and work of the author of Britain's favourite poem

---

→\* Raya Brown  
47 Cairndhu Drive  
Kidderminster  
DY10 2TB  
Tel: 07792422385  
Email: raya.magicwoolstudio@gmail.com  
Fee: £110 talk, £130 demo (45mins),  
£160 (1.5hr demo), £195 workshops  
+ 50ppm travel

1. Wool Painting talk
2. Wool Wonders talk
3. Felt Making Talk
4. Wool painting Demonstration
5. Felt Making Demonstration
6. Wool Painting Workshop
7. Felt Making Workshop
8. Watercolour demonstration and talk

\* Caroline Butcher

Hats by CC  
 24 St Andrew's Street  
 Droitwich Spa  
 WR9 8DY  
 Tel: 01905 412162  
 Email: info@hatscbyc.co.uk  
 Website: hatscbyc.co.uk  
 Fee: £45 plus £5 travel  
 In person talks only

1. ARE YOU LIVING THE LIFE YOU WANT TO LIVE?
2. What is NLP (Neuro-linguistic programming)?
3. How we communicate to ourselves, and others affects our behaviour and habits. Do you want to lose weight, remove a phobia, a limiting decision or belief? This is a life changing technique. Want to find out more?
4. History of Hats Through the Decades
5. Demonstration on how to make a hat
6. Advice on styling, design and suitability of headwear
7. Top Tips in Headwear
8. How to Build Confidence and Feel Good in a Hat
9. Caroline Butcher is a Trainer and Master Practitioner in NLP, TLT, Hypnosis and coaching.

John Butterworth

3 Old Malthouse Court  
 Brewery Walk  
 Worcester WR1 3HY  
 Tel: 01905 617058 / 07955 262633  
 Email: john@jbutterworth.plus.com  
 Fee: £60 inc travel  
 Zoom and in person talks given

1. New – Trip to the Antarctica
2. New - Six of the Best Christmases
3. A Day at the Palace – The day I was presented with the MBE by the Queen.
4. Adventures in Uganda: In 2018 I visited a 9-year-old boy I sponsor in a school in a remote village.
5. Hitting The Headlines as a Newspaper Editor – The joys of being an editor and what goes on in a weekly newspaper office including Black Country Bugle
6. The Country That Was Cut Off From The Rest Of The World For 45 Years – Albania and the amazing true story of Berti Dosti, a captain in the Albanian army
7. Hotel with a Famous Guest List – A fascinating history of a hotel and the many characters who have stayed there
8. Off the Beaten Track – An overland trip to Nepal to deliver a Land Rover to a Leprosy hospital
9. The Nurse who changed Guinea – Bissau – The fascinating story of nurse Lily Gaynor
10. The Stagecoach Era – How it changed our area, the famous drivers and the pros & cons of travelling by one
11. Official visit to China as the country opened up in 1986

\* Sandy Cale

Worcester Walks  
 6 Otley Close  
 Worcester WR4 0BJ  
 Tel: (Home) 01905 21286  
 Mobile: 07890 222 117  
 Email: sandycal@aol.com  
 Website: www.worcesterwalks.co.uk  
 Fee: £50 + 35p mile travelling  
 max 20 miles  
 In person and Zoom talks given

1. Madresfield, The real Brideshead
2. Inside Worcester Crown Court
3. A Highwayman
4. Elgar, Homes, and Haunts
5. Elegant Georgian Worcester, in costume
6. The Great Escape - Footsteps of Charles II
7. Worcester's Wonderful Women
8. Tales From Worcester Royal Infirmary

\* Chris Champness  
Polhawn  
Archenfield Road  
Ross on Wye  
Herefordshire HR9 5BA  
Tel: 01989 564651/07990534990  
Email: benchamp@aol.com  
Fee: £45 (plus £2 per pair of earrings/ per brooch) + 45ppm  
In person talk only

1. Make your own Knitted earrings workshop (Non knitting skills required!)
2. Make Your Own Crochet Brooch Workshop (no crochet skills required!)

---

\*David Chatterley  
23 Newport Close  
Walkwood, Redditch B97 5PY  
Tel: 01527 542389  
Email: davidchatterley@virginmedia.com  
Fee: £35 (Proportion donated to BBC Children in Need)  
In person talks only

1. History of The Teddy Bear
2. Victorian Brass Needle cases- The story of Redditch needle makers and especially William Avery & Son who patented and manufactured novelty brass needle cases between 1830-1900.

---

\* Phillip Collins  
13 Lypiatt Terrace  
Lypiatt Road  
Cheltenham  
Gloucs GL 50 2SX  
Tel: 07815852153  
Email: pcolhead@gmail.com  
Fee: Varies + Travel at 40ppm

1. History of Punch and Judy £50 + 40ppm
2. Radio Days (Comedy Radio Sketches) £100+40ppm
3. A History of Cheltenham through Picture Postcards £50+40ppm
4. What The Dickens (Life and works of Charles Dickens) £60 +40ppm
5. A Dickensian Christmas £70 + 40ppm
6. Fun with a G String (Ukulele workshop) £60+40ppm
7. Inventions and Inventors of Glos & Worcs £50 + 40ppm (available from 1/7/2023)
8. The Story of the Two Ronnies £50 + 40ppm (available from 1/7/2023)

---

Andrew Crabtree  
12 Bridge Road  
Alveley  
Bridgnorth WV15 6JP  
Tel: 01746 780478  
Email: andrewcrabtree@btinternet.com  
Website: www.andrewcrabtreepiano.co.uk  
Fee: £70 + expenses  
In person talks only

1. The Story of the Piano
  2. A Trip Down Memory Lane (songs from the last 70 years)
  3. Songs from Broadway
  4. Music from the Movies
  5. Carols and Christmas Songs
  6. Songs from the War Years
  7. Songs from West End Shows
- All presentations are with my Piano; talks 2 – 7 are with song sheets and accompanied by piano (myself) and guitar (Brian Nicholls).



\*✓ Ginny Davis  
 The Old Malthouse  
 Church Street  
 Wellesbourne  
 Warwickshire CV35 9LS  
 Tel: 07889 216474  
 Email: ginnydavis2860@gmail.com  
 Website: www.ginnydavis.com  
 Fee: £80 + 30ppm  
 Zoom and in person talks given

Ginny is an experienced who has performed her own plays at the Edinburgh Fringe and in courtrooms as a barrister. She is on the approved list of speakers for numerous WIs throughout the country.

1. To The Fringe and Beyond - An inspirational talk designed to motivate listeners to follow their hearts not their heads and pursue their dreams. The talk charts a career path which has led from the criminal courts to performance at the Edinburgh Fringe Festival and beyond. Illustrated with performance and song.
2. From the Pillory to the Prison Cell - A short, lighthearted look at criminal sentencing from the 16th century “name and shame” forms of punishment via capital punishment, transportation and hard labour to modern imprisonment.
3. What Lies Beneath The Surface. In Ginny’s novel of the same title a High Court judge, a QC and a celebrated actress are all caught up in the police enquiry into a death in the Regent’s Canal, London. As an actress and former practising barrister Ginny gives insight into the lives and work of QCs and judges and discusses actors’ and criminal lawyers’ relationship with the truth. She delves into the history of the Regent’s Canal and reads from the novel.

\* Sally Dickson  
 63 Cobden Street  
 Kidderminster DY11 6RP  
 Tel: 01562 740603  
 Email: sally456.136@btinternet.com  
 Fee: £50 + expenses incurred by public transport  
 In person talks only

1. From St Petersburg to Leningrad and Back Again
2. Kidderminster’s Home Front in the First World War
3. The Lunar Society of Birmingham
4. Rye, Sheep and Cheese: Agricultural Change in Hartlebury
5. The Lyttleton’s of Hagley Hall
6. The Blount Family: Lords of the Manor of Kidderminster
7. Bewdley, Tickenhill and the Mortimers
8. Urse D’Abitot, Norman Sheriff of Worcestershire and Founder of the Beauchamp Dynasty

→\* Meriet Duncan  
 Brambles  
 7 Phillips Acre  
 Yarpole  
 Leominster  
 Herefordshire  
 HR6 0DA  
 Tel: 07808891295  
 Email: meriet@mdthequeenbee.co.uk  
 Website: mdthequeenbee.co.uk  
 Fee: £60 + 44ppm travel  
 In person talks with demonstration

1. Creating a buzz about honeybees

Meg Farmer  
13 Westfield Road  
Fernhill Heath WR3 7XE  
Tel: 07909643014  
Email: meganfarmer991@yahoo.co.uk  
Fee: £38 + 25p/mile travelling  
In person and Zoom talks given

---

1. 101 Children, Experiences of a Foster Carer
2. Beds, Bugs and Bedpans – 37 years with the NHS
3. where a journey of saying yes instead of no has taken me – lighthearted talk on one woman's mad life!

Barry Faulkner  
15 Slade Road  
Yorkely  
Lydney  
GL15 4SG  
Tel: 01594 369961  
Email: barryfaulkner1@btopenworld.com  
Website: www.barry-faulkner.com  
Fee: £60 + 25ppm travel

---

1. 'The biggest UK heists and the geezers watt did 'em.' - A lighthearted illustrated talk on the UK's biggest heists 1930- present-day and the criminal networks that did them by the Amazon best-selling crime author Barry Faulkner. Includes Brinks Mat, Baker Street Bank, Hatton Garden, Knightsbridge, Great Train Robbery, Krays, John Palmer, The Richardsons and many more with personal insights as Faulkner's extended family ran with the Richardsons when he was a boy. You'll be pleased to know he did not follow in the family career path!!

➔\* Simon Freebairn J.P  
Plum Tree Cottage  
Main Road  
Ombersley  
WR9 0DP  
Tel: 07843689955  
Email: simonfreebairn@gmail.com  
Fee: £75 + 43ppm travel  
In person talk only

1. Just Honey Bees - This is a fun but educational insight into the amazing world of honey bees and their importance to our planet. Other bee keeping equipment such as a hive, smokers, frames of honey etc. will be on show so members can get up close and personal whilst questions are actively encouraged!  
(Between late April and late October, it may be possible to bring an observation hive where the audience can see a working colony of bees behind the safety of a glass viewing window. Please note this is dependent on weather conditions prior to - and on the day of the presentation as the welfare of the bees is always paramount. Other bee keeping equipment will be on show such as a hive, smokers, frames of honey etc).

➔\* Frances Fry  
24 Northwick Road  
Evesham  
WR11 3AN  
Tel: 07595905375  
Email: t.coombs2@btinternet.com  
Website: www.francesfry.com  
Fee: £80 + 25ppm only after  
20 mile round trip

1. Music, Musicals and Me – inspiring songs and stories from a struggling West End Actress
2. Music, Musicals and Amore – Songs and stories behind some of our most popular love songs
3. Music, Musicals and a Merry Christmas – A fun and festive entertainment sharing some of our most enduring and loved Christmas songs, with a peek at some of the stories behind them.

\*Christine Frey  
41 Arlington Lodge  
Arlington venue  
Leamington Spa CV32 5BF  
Tel: 07761762467  
Email: christinefrey@live.co.uk  
Website: glowingolder.uk  
Fee: £60 including travel  
In person only talks

1. 'Glowing Older – Loving Life Longer. This interactive talk explores an area which is often neglected in the pursuit of health; the role of our beliefs. Discover how society conditions us to expect inevitable decline as we age and how this is at odds with what science, and experience, tells us is possible. As a qualified Health Coach and Counsellor Christine believes a healthy brain and a healthy mind are valuable assets we need to pay attention to if we truly want to make the most of the second half of life. Find out, through this talk, how you can care for both.
2. The Power of Mindfulness – learn what mindfulness is (and isn't) and how it can help you in all aspects of life.

---

Sandra Grayson  
12 Wolverton Road  
Worcester WR1 1PE  
Tel: 07939354122  
Email: Sandy9292@hotmail.co.uk  
Fee: £60 + 40ppm travel  
In person talks only

GRAPHOLOGY (Handwriting analysis) - all talks are approx.45 mins + time for Q & A's:

1. Graphology - The Hidden Meaning of Handwriting
2. Graphology – The Devil's in the Detail
3. Fun Signs – A Hilarious Look at Marketing Mistakes and Typos

Professional Graphologist and Calligrapher, Sandra offers A CALLIGRAPHY FOR BEGINNERS MASTERCLASS. This is a 2-3 hour session consisting of easy-to-follow instructions, how to improve your handwriting and will produce impressive results during this masterclass. All session materials and equipment are included (for groups of min.5 to 50 adults). Cost for WI members is £30pp (usually £75)

---

→\* Andy Griffee  
Vinney Hill  
Kingswood  
Stanford Bridge  
Worcester  
WR6 6SB  
Tel: 07711032842  
Email: andy.griffee@live.co.uk  
Fee: £60  
In person(preferred) and zoom  
talks given

1. Crime Fiction's second golden age - recommended crime novels and how I approach writing my Johnson & Wilde series of crime mysteries set on the canals and rivers of England (Canal Pushers, River Rats, Oxford Blues, Devil's Den).

---

\*Mike Griffiths  
111 St John's Avenue  
Kidderminster  
DY11 6AX  
Tel: 01562 68693  
Email: argentum@clara.co.uk  
Website: naturesway-animals.co.uk  
Fee: £60 donation

1. Animal Complimentary Therapist – Using natural materials and the animal's own instincts to address physical and psychological conditions.

Adrienne Grinyer & Ingrid Walden  
From Time to Time  
4 Saxon Court  
Bidford – on – Avon  
B50 4AB  
Tel: 07817576183  
Email: info@fromtimetotime.co.uk  
Website: www.fromtimetotime.co.uk  
Fee: £70 + 45p per mile travel  
Zoom and in person talks

One hour history talks in full costume-making history fun!

1. The Why's and Wherefores of Everyday Tudor Life
2. A stitch in time – Tudor clothes and crafts
3. Let us entertain you - Tudor Pastimes
4. The Art of a Merry Marriage – how to find it and keep it!
5. Victorian Entertainments – from posh to the poor
6. A Day in the Life of a Victorian Lady and her housekeeper
7. Christmas – Tudor, Victorian, Regency, WW2, 1920's

Selected talks on Zoom – see website

---

→\* Alison Hatton  
7 Fishpools  
Lyonshall  
Herefordshire  
HR5 3PS  
Tel: 07554691155  
Email: alison@animalhealingtherapies.co.uk  
Website: www.animalhealingtherapies.co.uk  
In person and Zoom talks  
Fee: £0 + 45ppm

1. An introduction to Zoopharmacognosy, nature's natural holistic toolkit for your dog
2. An introduction to introducing nutritional herbs into your dog's daily diet.
3. How to plan and plant a herbal garden to support with your pet's physical and emotional health needs.
4. An introduction to The Intuitive Healing Technique and how we can learn to strength our natural intuitive abilities.

---

Angela Hugman  
Hillview, Mill Lane,  
Malvern WR14 3QS  
Tel: 01684 564334  
Fee: £40.00 + 50p per mile  
In person talks only

1. The Adventures of a Physiotherapist
2. Working as a Physio in the Middle East
3. Tales of the Unexpected
4. Osteoporosis
5. Stay and Keep Fit
6. Living in the Middle East
7. Prevention of Falls
8. Other Talks Available

---

\* Judy Hulland JP  
47 Swinton Lane  
Worcester  
WR2 4JP  
Tel: 01905 420104  
Email: judy.hulland@btinternet.com  
Fee: Nil but a donation can be made to  
Worcestershire Magistrates Association

1. The Magistracy



Georgia Jacobs  
165 Hither Green Lane,  
Abbey Park  
Redditch,  
Worcestershire  
B98 9AZ  
Tel: 01527 62766  
Email: georgia\_jacobs@hotmail.co.uk  
Website: Georgia-textile-artist.com  
Fee: Donation  
In person talks preferred

1. An introduction to Geology: What Lies Beneath our Feet? Discovering Minerals, Rocks and Fossils. This is a 'hands on talk' with geological specimens from the British Isles and around the world including: \*Iceland (the land of ice and fire), Italy (Mount Vesuvius and Solfatara), France (Landscapes of Provence), USA (California Highway One, The Grand Canyon, Death Valley, Geology in New York – 'Rocks and the City', Chicago and The Dinosaurs, New England and The Mowhawk Trail), England (Cornwall, Cumbria and The Lake District, The Abberley and Malvern Hills Geopark), Scotland (Highlands and Isles), Ireland (including Antrim and The Giants Causeway), , Scotland – Highlands & Islands and Northern Island (The Giants Causeway and Antrim Coast)
2. An Introduction to Textile Art: Paint, Stitch – mixed media and screen printing. This talk includes a demonstration with samples to take home. A follow up workshop can also be arranged for your WI craft group to explore a wider variety of sampling techniques
3. Girl with a Guitar (keyboard, Mandolin and Dulcimer) – enjoy a sing-a-long for birthday meetings and local WI Group events. Song sheets provided.

---

➔\* David Jellie  
51 Fairfield Road  
Bromsgrove  
B61 9JL  
Tel: 07948392328  
Email: daviddjel@gmail.com  
Website: www.downinthe  
hedgerow.com  
In person and Zoom talks given  
Fee: £40 + 50ppm after 10 miles

1. Photographing Woodlands and Hedgerows – with photography tips

---

\*Alf Jenkins  
The Damsons  
Millbrook Way  
Orleton  
Ludlow  
SY8 4HW  
Tel: 01568 780398  
Email: alfjenkins07@gmail.com  
Website: alfjenkins.com  
Fee: £35 + 40ppm  
In person talks only

1. "From the Carthorse to Concorde and Beyond" based on new book published March 2023
2. Industrial Social History
3. Amusing Stories – Teaching
4. Dialect of Clee Hills
5. Tour of Australia
6. Demonstration of Pyrography
7. Canadian Rockies

Wendy Moore  
C/o Johnsons Coaches  
Liveridge Hill  
Henley in Arden  
B95 5QS  
Tel: 01564 797000  
Email: wendy.moore  
@johnsonskoaches.co.uk  
Website: www.johnsonskoaches.co.uk  
Fee: £40 Donation to our charity  
In person and Zoom talks given

1. 114 years in a family business at Johnsons Coaches – a talk accompanied by a slideshow, presented by John Johnson, 3rd generation family owner or by Mrs Wendy Moore, Sales Manager.

---

\* Sue Johnson  
38 Birch Avenue  
Evesham WR11 1YJ  
Tel: 01386 446477  
Email: sue.r.johnson@outlook.com  
Website: www.writers-toolkit.co.uk  
Fee: £45 + £10 travel  
Zoom and in person talks

1. Writing for Women's Magazines
2. Where Do Stories Come From?
3. The Writer's Notebook
4. A novel's journey
5. Poems and Stories
6. Tasting Words: Hearing Colours – Synaesthesia
7. Threads – A Life in Fabric

---

\* Donna Jones  
132 Henwick Road  
Worcester WR2 5PB  
Tel: 07944111789  
Email: dsj.hypno@outlook.com  
Fee: Nil + travel calculated by  
AA travel and £5  
In person and Zoom talks given

1. How the Brain Works – understand your brain to live your best life
2. Managing Menopause Symptoms through Hypnotherapy
3. Menopause Awareness Workshop (2 hours)
4. Solution focused self-care – enhancing your mental wellbeing

---

\* Ken Kelly  
2 Savages Close  
Bishops Tachbrook  
Leamington Spa CV33 9RL  
Tel: 01926 420361/ 07958703928  
Email: ken904@btinternet.com  
Fee: £40(person) + 15ppm or  
£30 Zoom  
In person and Zoom talks given

1. The Mercury 13 – The Women NASA Tried to Forget
2. Women in Space –For Some...the PTA Was Not Enough!
3. Women's Olympic Ordeal - In the Beginning – Never Really Wanted!
4. Women at War – Meet the Women Warriors of Bletchley Park

---

→\* Sue Lewis  
17 Meadow Road  
Catshill  
Bromsgrove  
B61 0JJ  
Tel: 07940841571  
Email: suelewis52@hotmail.com  
Fee: £60 + £10 travel  
In person talks only

1. The work of The Leprosy Mission England and Wales

Ruth Lowe  
 25 Windsor View  
 Bartley Green  
 Birmingham B32 4DB  
 Tel: 0121 608 5355  
 Email: lowewhiley@blueyonder.co.uk  
 Fee: £75 + travel at 45ppm  
 In person talks only

1. Mary Quant – Part 1: her early life, career and Design Concept through the 1950s- 1970s
2. Mary Quant – Part 2: Her career, and design concept through the 1970s - 2000
3. Other Designers in the 1960s/1970s who followed Mary Quant, plus boutiques on Carnaby Street and Kings Road. General information on the music and fashion scene including artistes influences.

Colin Millett  
 14 Hazleton Road  
 Marlbrook  
 Bromsgrove  
 B61 0JE  
 Tel: 01527 579698 / 07968279569  
 Email: colinmillett@gmail.com  
 Fee: £75 includes travel  
 In person talks only

1. WORCESTER PORCELAIN: A COLLECTOR'S TALE . An informative illustrated talk that details many interesting facts and anecdotes relating to the origins of Worcester Porcelain and important figures who worked at the factory . Talk involves a fun quiz t the end .
2. LADIES OF 'THE PORCELAIN' : A Powerpoint /illustrated talk, full of informative and interesting facts about a number of important lady painters and modellers and the role they played in securing Royal Worcester's worldwide reputation throughout the twentieth century. Talk involves a fun quiz at end .
3. THE WONDER OF WORCESTER : A CITY HERITAGE SUCCESS STORY. A Powerpoint /illustrated talk that considers not only the origins of Worcester porcelain but the reasons why this world famous ceramic factory existed for over 250 years in the city of Worcester.
4. 'HARRY': THE LIFE AND WORK OF HARRY DAVIS (1885-1970), ROYAL WORCESTER'S GREATEST EVER PAINTER .A Powerpoint/ illustrated talk that tells the amazing story of the man destined to be Royal Worcester's greatest ever painter. An informative an interesting talk , complimented by a range of images representative of Harry's Davis 's fantastic work.

Chris O'Grady  
 23 Church Street  
 Tewkesbury  
 GL20 5PD  
 Tel: 07935331411  
 Email: o\_gradychris@hotmail.com  
 Fee: £65 + 18ppm travel  
 Zoom and in person talks given

1. Walking to Rome – The true uplifting story of one man, four pairs of underpants, the 2,000km between Pershore & Rome and the extraordinary kindness of strangers
2. Keep the sea on your left, turn right at Lands' End - Walking the entire coast of England and Wales. Tales of a haphazard trek around the edge of our "Sceptred Isle"
3. Fake & Fortunes Art & Antiques, Dealers and Forgers – Stories of amazing finds, of money made and money lost. I am happy to provide informal appraisals of any items that people coming to the talk might like to bring along.
4. Travelling Around Japan – My small contribution to world peace- a personal story of couchsurfing, hitchhiking and unexpected kindness from around the world.
5. Rembrandt: The Artist's Life Discovered Through His Self Portraits – Rembrandt the master selfie, left us a path through extraordinary life as illustrated by a passion for depicting his own changing face.

\* Sheila Oxspring  
The Laurels  
8A Dark Lane  
Stoke Heath, Bromsgrove  
B60 3BH  
Tel: 01527 837783  
Mobile:07890092620  
Email: sheilaox1@outlook.com  
Website: bromsgrovehomeopath.co.uk  
Fee: £50  
Zoom or in person talks given

---

1. Homeopathy - Safe, effective treatment
2. Allergy testing and Treatment

Wendy & Roger Pepper  
25 Cofton Church Lane  
Cofton Hackett  
Birmingham  
B45 8PS  
Tel: 0121 445 1585  
Email: wendy\_pepper@btinternet.com  
Fee: Donation + travel

1. Eccentric Adventures - Living life to the full – walking, cycling, skiing and more with macular disease, the leading cause of sight loss in the UK. Wendy who is severely sight impaired calls this illustrated talk the three Es – Education, Empowerment and Entertainment. Find out about this condition, the support available from the Macular Society and be entertained by their adventures.
  2. African Adventures - An illustrated talk about a five-week, 6,600k motorhome tour through South Africa, Botswana, Zimbabwe and Namibia, a challenging way of having close encounters with the flora, fauna and geography of this fascinating region, together with an update on macular conditions, latest treatments and research.
  3. Turkish Delight - An illustrated talk about a motorhome tour exploring Turkey from Gallipoli, across the Dardanelles to Troy and Ephesus, down the Adriatic coast to Antalya, inland to Cappadocia, returning via Ankara and Istanbul, together with an update on macular conditions, the latest treatment and research.
- 

→\* Helen Plumb  
27 North Street, Winchcombe  
Gloucestershire, GL54 5PS  
Tel: 07732835704  
Email: helen.plumb@gmail.com  
Website: www.just-gems.co.uk  
Fee: £50 plus 25ppm  
In person and Zoom talks given

1. Selection of gems in Jewellery
  2. Investing in diamonds and other gems
  3. How gems are formed
  4. Optical properties of coloured gems
  5. British gemstones
  6. Role of pearls through history
- 

Peter Preece  
5 Orchard Way, Studley  
Warwickshire B80 7NZ  
Tel: 01527 853444  
Email: peterprece777@btinternet.com  
Website: peterprece.net  
Fee: £35 + cost of petrol used only  
In person talks only

- Talk Titles are as follows:
1. Every Picture tells a story – Part 1 and 2
  2. Hide and Seek – Part and 2
  3. Lock Down – Part 1 and 2
- All digital presentations are one hour long on natural history photography



Roger Pugh (Sylvesta the Jester)  
 27 Church Lane  
 Bromyard HR7 4DZ  
 Tel: 01885 483425/07779 694615  
 Email: pugh@live.co.uk  
 Website: roger-pugh.co.uk  
 Fee: £50 + 40ppm  
 In person talks only

1. Life and Times of a Jester – A talk on how I became a professional Jester and master of medieval banquets; talk is peppered with humorous entertainment.

Avril Pulley  
 13 Dinchall Road  
 Spetchley Road  
 Worcester WR5 2ND  
 Tel: 01905 359284  
 Email: thepulley@hotmail.co.uk  
 Fee: £40 + 50p per mile  
 In person talks only

1. A demonstration of handmade flowers for all occasions in airdrying paste by an ex Royal Worcester Maker - Please note daytime only for winter demonstrations.

\* Jennifer Rigby  
 43 Landsdowne Road  
 Studley  
 B80 7RD  
 Tel: 07753684401  
 Email: contact@auntyjen  
 productions.co.uk  
 Fee: £50  
 In person and Zoom talks given

1. Shakespeare and Me – An anecdotal talk with performance elements
2. Shakespeare's Women – Detailing both real and fictional women in Shakespeare's life – with performance elements
3. 'But I Can't Tap Dance!' An anecdotal talk about the life of a 21st century actress
4. Albert, Worms and George, Don't Do That! A ramble through the monologues of comedy greats, with performance extracts

Jill Salmons (Nicklin)  
 Lower Vinesend Farm  
 Vinesend Lane  
 Cradley, Nr Malvern  
 Herefordshire WR13 5NH  
 Tel: 01886 880920  
 Email: salmons777@btinternet.com  
 Fee: £50 + 30p a mile for travel  
 In person talks only

1. Costumes and Culture of Southwest China (brings costumes and hats)
2. Costumes and Cultures of Peru (brings costumes and hats)
3. Costumes and culture of West Africa (brings costumes)
4. Carnival around the world (brings costumes and masks)
5. First Nation art from NW Coast America
6. Maori art and culture
7. Body art around the world

Christine Shaw  
 29 Elm Green Close  
 Worcester  
 WR5 3HD  
 Tel: 01905 358640/07793242505  
 Email: mrschristineshaw39  
 @gmail.com  
 Fee: £25+£5 travel  
 In person and on Zoom talks given

1. Voices of The Great War

Graham Sutherland  
123 Spring Pool  
Warwick CV34 4UP  
Tel: 01926 495894 / 07801 962981  
Email: graham.g.sutherland@  
btopenworld.com  
Website: www.talksandwalks.co.uk  
Fee: Zoom (£50), others from  
£70+travel (£5-10)  
Zoom and in person talks given

1. Law and Order (various)
  2. Memories of Yesteryear (various)
  3. Supernatural– Crime – Twistin’ the Stories
  4. The Warwick Series
  5. Have Bell will Travel-experiences of a Town Crier
  6. Women at Work
  7. Feisty Females
  8. Wicked Women
- Many various talks – please refer to his website for full list

---

→\* Penny Thompson  
3 Eardiston House  
Eardiston  
WR15 8JH  
Tel: 07855 964267  
Email: info@hibiscuseremonies.co.uk  
Website: www.hibiscus  
ceremonies.co.uk  
Fee: £60 + travel if over 30 miles  
In person talks given

1. Hatching, Matching and Dispatching

---

Dr Gillian White  
Woodpecker Cottage  
Hidcote Road  
Ebrington  
Chipping Campden  
GL55 6NA  
Tel: 01386 593404  
Email: gillian.m.white@outlook.com  
Fee: £40 + 32ppm travel  
Zoom and in person talks given

1. Robert Dudley, Queen Elizabeth and the Kenilworth entertainment of 1575
2. The Hugely Huggable History of the Teddy Bear
3. Bess of Hardwick & Hardwick Hall
4. Chatsworth & the Cavendish Family, c.1550-1850
5. Mary, Queen of Scots
6. Elizabethan Textiles
7. Queen Victoria: A Life in Portraits
8. Henry VIII and the Field of Cloth of Gold

---

Les Wiltshire  
Casualties Union  
11 Berkeley Close  
Whittington  
Worcester  
WR5 2RF  
Tel: 01905 357612 or  
07968 303508  
Email: les\_wiltshire@tinyworld.co.uk  
Fee: Donation + 45ppm or 50ppm  
if two travel together

1. Casualty simulation in Rescue - First Aid and Emergency Medicine including injury make-up, acting and staging

\* David Withey  
71 Charles Way  
Malvern  
WR14 2NB  
Tel: 01684 563322  
Email: dave.withey17@yahoo.co.uk  
Website: www.comedy  
4amdram.com  
Fee: £25  
Talks in person only

1. The Lighter Side of Local Government – Humorous anecdotes
2. Work is a Four-Letter Word – Funny stories from all types of work
3. **New Talk for 2023** - Mostly Quotes and Anecdotes - Consisting of various quotations, many of them humorous, but also mixed in will be some profound and thought-provoking quotes.

---

\* David Wornham  
20 The Parklands  
Droitwich WR9 7DG  
Tel: 01905 775840  
Email: flexicase@gmail.com  
Website: see opposite  
Fee: £60+35ppm  
Talks in person only

1. River Salwarpe - from Lickey Hills to River Severn
2. Advanced Driving for enjoyment of all
3. Tuneful Tubes? – Demonstrated Musical Wind Instrument History
4. Volunteering with the Canal and River Trust

For more information visit:  
<https://sites.google.com/site/tunefultubes>



## Foot Clinic

We examine the feet, trim and burr down thickened nails, apply a foot file and then cream the feet to finish. Advice on foot health and footwear.

Friendly chat and a Hot Drink is included.

## Bespoke Orthotics



We upholster and make custom made orthotics. If you are struggling with your feet, need new devices or just need some advice, then give us a call and we can have a chat over the phone.

## Foot Scanning

Foot Scanning enables us to have a better understanding of the way your body is performing relating to your gait and helps us to create custom orthotics.

## Shockwave Therapy

Shockwave Therapy helps repair damaged muscles and soft tissue. It relieves pain for up to 3 months from conditions such as arthritic joints, gout & carpal tunnel.

Opening Hours: Tues, Weds, Thurs & Saturdays 10 - 5pm  
Late night sessions can be arranged upon request.

01299 400111 • [www.ifoothealthcare.com](http://www.ifoothealthcare.com)

62 LOAD STREET | BEWDLEY | WORCESTERSHIRE | DY12 2AP

## ifoothealthcare Testimonials:

“Many thanks to Joanne at ifoothealthcare for her excellent care after I had a fall and could hardly walk. The shockwave therapy Joanne recommended helped reduce the pain and speed up the healing. If you've got an injury old or new I recommend going to ifoothealthcare for treatment.” - Megan



“This is not just a shoe shop. The business helps people with foot problems, balance, scans on your feet, to show how you walk & your gait, etc. I have had orthotics made to go in my shoes which help with my balance due to a damaged vertebrae, in my spine. I've had many falls as I'm off balance & experience chronic pain in my back. The help, advice & professionalism from Jo the owner & her team has been excellent! Jo is a very nice lady & has much experience of people with with foot problems. My orthotics have reduced my back pain & have not had many other falls. I have also purchased 4 pairs of well made shoes & my orthotics fit inside, shoes are very comfortable. I would certainly recommend this specialised practice. Thank you all at ifoot health care your service is invaluable!” - Linda

## Norris and Miles SOLICITORS

6 Market Square  
Tenbury Wells  
Worcestershire  
WR15 8BW  
Tel: 01584 810575  
Fax: 01584 811759  
post@norrismiles.co.uk  
www.norrisandmiles.co.uk

### Local Legal Advice

- Property sale and purchase
- Property, building and other disputes
- Wills and Powers of Attorney
- Administration of Estates and Tax Planning
- Business and farm sale, purchase and Tenancies
- Divorce, separation, finance and children
- Prenups and Cohabitation Agreements

## Norris and Miles SOLICITORS

Our aim is to give a prompt, efficient and courteous service with integrity and personal attention. Our legal services are first class and up to date.

Norris & Miles is an established firm of Solicitors situated at 6 Market Square in Tenbury Wells which borders Worcestershire, Shropshire and Herefordshire. We have been providing legal services since 1840. We pride ourselves in providing a wide range of legal services.

We are a forward thinking and dynamic firm who have achieved and maintained the Law Society's standard of excellence.

[www.norrisandmiles.co.uk](http://www.norrisandmiles.co.uk)

## Shaw healthcare

wellness • happiness • kindness

# The Hawthorns

The Hawthorns care home is a specialist facility for elderly people with dementia in Evesham. We employ clinical specialists and qualified professional carers which means that all nursing and personal care needs are fully met.

The Hawthorns, is dedicated to improving the lifestyles and well-being of elderly people who are living with a form of a dementia, while working closely with families and loved ones in the process.

Residents enjoy a number of therapeutic activities and the expertise of clinical specialists, which are also available for respite stays and people with sensory impairment problems. Person-centred planning enables carers to set specific goals for each individual, with an extensive range of care expertise and resources to draw upon.

[www.shaw.co.uk/hawthorns](http://www.shaw.co.uk/hawthorns)

## Shaw healthcare

wellness • happiness • kindness

# The Hawthorns

Church Street, Evesham, Worcestershire WR11 1EP

Dementia Nursing Care

Aquired Brian Injury Nursing



Inspected and rated

Outstanding ☆



The Hawthorns care home is a specialist facility for elderly people with dementia in Evesham. The homely environment linked with therapeutic activities encourages confidence and assists in maintaining daily living skills.

For more information please call us or visit:

# 01386 444 330

[www.shaw.co.uk/hawthorns](http://www.shaw.co.uk/hawthorns)

We are the UK's largest employee-owned healthcare provider

shawhealthcare @shawhealthcare

Scan Me





## Animal drawings, Portraits, faces and much more

I specialise in drawings using pen, graphite pencil and coloured pencils.

If you would like a drawing commissioned, please contact me to discuss your requirements.



07913898061  
rowenawilsonart@gmail.com

## **SECTION 2 - SPEAKERS FROM CHARITIES & OTHER ORGANISATIONS**

### **ACORNS CHILDRENS HOSPICE TRUST**

Acorns Children's Hospice

Fundraising Office

350 Bath Road

Worcester WR5 3EZ

Tel: 01905 761220

Email: **ThreeCounties.Admin**

**@acorns.org.uk**

1. The history and work of Acorns
2. Fundraising
3. Volunteering

---

### **\*ACTION FOR CHILDREN:**

Tel: 0300 123 2112

(open 9am to 5pm, Monday to Friday)

Email: [ask.us@actionforchildren.org.uk](mailto:ask.us@actionforchildren.org.uk)

Fee: Donation

1. Work of AFC
2. Fund Raising for AFC
3. Methodist links with AFC

---

### **BRITISH RED CROSS**

Bradbury Court

Berkeley Business Park

Wainwright Road

Worcester

WR4 9GY

Tel: 01905 450400

Website: [www.redcross.org.uk](http://www.redcross.org.uk)

1. Red Cross & First Aid Awareness - see website for more details

---

### **CANCER RESEARCH UK:**

Switchboard 020 7242 0200

Website: [www.cancerresearchuk.org](http://www.cancerresearchuk.org)

Fee: Donation

1. Stop Smoking
2. Maintaining a healthy body weight
3. Looking after No1
4. Be sun smart

---

### **CAVELL NURSES TRUST**

Tel: 01527 595999

[www.cavellnursestrust.org](http://www.cavellnursestrust.org)

Fee: Donation

1. Being here for nurses: The work of Cavell Nurses' Trust

---

### **COUNTY AIR AMBULANCE**

Mr Mark Wilkins

County Air Ambulance Trust

Orchard House

Selkirk Gardens

Cheltenham GL52 5LX

Tel: 01242 239784

Email: [markwilkins999@aol.com](mailto:markwilkins999@aol.com)

Fee: Donation

1. The County Air Ambulance Trust



**ACTION DEAFNESS - DEAF DIRECT**

Vesta Tilley House  
Lowesmoor  
Worcester  
WR1 2RS  
Tel: 01905 746301

Email: [info@actiondeafness.org.uk](mailto:info@actiondeafness.org.uk)  
Fee: Donation + travel

---

1. Living with Hearing Loss
2. Support and Advice
3. Deaf awareness training
4. British Sign Language Courses
5. Deaf & hard of hearing products

**DOGS FOR GOOD**

(Formally known as  
Dogs for the Disabled)  
Fundraising Department  
The Frances Hay Centre  
Blacklocks Hill  
Banbury  
OX17 2BS  
Tel. 01295 759824  
Email: [info@dogsforgood.org](mailto:info@dogsforgood.org)  
Website: [www.dogsforgood.org](http://www.dogsforgood.org)

---

1. The talks goes through our work training assistance dogs to help client's with physical disabilities by opening doors, emptying the washing machine, retrieving dropped items and children with Autism by calming the child, stopping bolting behaviour and intervening before a meltdown. It will also cover our Community Dog work with clients with Autism, School Dog and our Dementia Dog pilot project.

**DOGS TRUST**

Website: [www.dogstrust.org.uk](http://www.dogstrust.org.uk)  
Email: [info@dogstrust.org.uk](mailto:info@dogstrust.org.uk)  
Fee: Donation

---

1. Dogs Trust

**FAIRTRADE**

Elaine Barbour  
10 Valley View  
Bewdley  
DY12 2JX  
Tel: 01299 400617  
Email: [barboursbewdley@btopenworld.com](mailto:barboursbewdley@btopenworld.com)

1. Elaine was a voluntary rep for Traidcraft for nearly 34 years. Her illustrated talk 'Not just Fairtrade bananas!' shows the impact of Fairtrade, especially through Traidcraft, on the lives of producers throughout the "third" world and the latest developments in Fairtrade.

**GUIDE DOGS FOR THE BLIND ASSOCIATION**

Dr Jean Emberlin  
Guide Dogs for the Blind Association  
Warwick New Road  
Leamington Spa  
CV32 6AH  
Tel: 07584 288493 or 01886 880816  
Email: jean.emberlin@btinternet.com  
Website: www.guidedogs.org.uk  
Fee: Donation

1. There ARE OVER 20,945 new registrations of sight lost in England and Wales, that is 57 new registrations per day. Many of these people will never leave home alone and will have a marked reduction in quality of life. The Guide Dogs for the Blind Association charity aims to transform the lives of adults and children living with visual impairment. Our trained speakers give informative and very entertaining talks on how the Guide Dogs for the Blind Association works to fulfil this ambition. The talks focus on how the world famous Guide Dogs are trained and how they completely change the lives of their owners. The Guide dogs not only give their owners the freedom to go where they want to independently and to be active, but also, they provide companionship, give confidence and have even saved the lives of the owners. The talks also cover other aspects of the charity's work such as supporting children with visual impairment. The speakers draw on their personal experiences and typically will include a Guide dog owner accompanied by their wonderful dog and a Guide Dog Puppy raiser with their puppy.

---

**GOODWILL & GROWTH FOR AFRICA**

Olivia Van Rensburg  
PO BOX 6751  
Stratford upon Avon  
Tel: 01789 414088  
Email: olivia@gaga-uk.org  
Fee: £75 to be donated to GAGA charity + 40p/mile travel

1. Goodwill & Growth for Africa is a UK-registered charity which supports orphans, vulnerable children and impoverished communities. Trustees Claire and Charlie will talk on their own first hand experiences of working in South Africa with children, families and communities, as well as about the work of GAGA there. The trustees, if requested, can talk in more detail on projects which specifically support children.

---

**HEARING DOGS FOR DEAF PEOPLE**

Merleen Watson with her hearing dog Zyla  
2 The Court  
Back Lane  
Broadway  
WR12 7BF  
Tel: 07966 518502 (text)  
Email: lunar.mw@gmail.com\*  
\*Preferred means of contact  
Fee: Donation to the charity

1. Hearing Dogs for Deaf People - how these amazing dogs assist their recipients, usually including a small demonstration.
2. One in Five - issues of hearing loss, hearing aids and practical tips on how to support a hearing-impaired person.
3. Hearing Link – supporting your hearing journey

→ **HEDGEHOG CHARITY**

Prickles and Paws  
Emma Brown  
Email: talks@pricklesandpaws.org  
Tel: 07926576164  
Fee: Donation  
Zoom/Teams only; Wifi required

The talk lasts about 30-45 minutes, with time for questions at the end. It includes a tour of the rescue, allowing groups to see "behind the scenes", a unique peek as we are a closed site to members of the public.

I also talk about the hedgehog, it's importance and why this much loved mammal is vulnerable to extinction.

We also look around the wildlife garden to talk about features to encourage wildlife.

I recommend May-September as we usually have hoglets on site during these times!

---

**KEMP HOSPICE**

Website: kemphospice.org.uk  
Tel: 01562 756066  
Email: fundraising@kemphospice.org.uk  
Fee: Donation is appreciated

1. Life in all its fullness – the work of Kemp Hospice
2. Family Support

---

**LEUKAEMIA CARE**

Community Fundraising Officer  
Office line: 01905 755977  
Website: www.leukaemiacare.org.uk

1. The charity and the work that we do

---

**MARIE CURIE CANCER CARE:**

Marie Curie Cancer Care  
Website: www.mariecurie.org.uk  
Fee: Donation

1. Work of Marie Curie

---

**MIDLANDS AIR AMBULANCE CHARITY**

Jo Bailey  
Hawthorne House  
Dudley Road  
Stourbridge DY9 8BQ  
Tel: Charity Headquarters  
0800 8 402040  
Email: charley.burke@midlandsairambulance.com  
or call 07849 845618.  
Website:  
www.midlandsairambulance.co.uk  
Fee: Donation

1. Midlands Air Ambulance

---

**NATIONAL TRUST:**

Website: www.nationaltrust.org.uk

**For local sites of interest**

**NATIONAL FARMERS UNION:**

Emma Hamer  
NFU County Adviser Worcestershire  
Secretary to the West Midlands  
Combinable Crops Board  
Mob: 07469 084691  
Email: Emma.Hamer@nfu.org.uk

---

1. Why Farming Matters and other related topics

**NEW COLLEGE WORCESTER**

(formerly RNIB)  
Kevin Hateley  
Fundraising Manager  
New College Worcester  
Whittington Road  
Worcester WR5 2JX  
01905 761015  
Email: khateley@ncw.co.uk  
Website: www.ncw.co.uk  
Fee: £40

---

1. Educating Blind & vision Impaired young People
2. A history of New College Worcester – The national, residential special school for young people aged 11-19, who are blind or vision impaired. (A hands on and practical presentation, which is always very popular).

**\*OROMIA SUPPORT GROUP:**

Trevor Trueman  
Tel: 01684 573722  
Email: osg@talktalk.net  
Fee: Donation (within 50 miles)

---

1. Ethiopia – Human Rights situation for the unsung 40 million Oromo people
2. Refugees and Asylum-Seekers
3. Human Rights in Ethiopia

**POLICE**

Mr Mike Digger  
West Mercia Traffic  
Management Advisor  
West Mercia Safer Roads Partnership  
PO Box 446  
Worcester  
WR2 4YR  
Tel: Switchboard 01905 331258  
Radius: Worcestershire and South  
Warwickshire

---

1. Female Driver - Personal Safety (talk with slides)

He does not work Mondays. His talks take 1 hour 15mins and prefers groups of over 20, with no fee but will take donations to charity that he nominates on the evening

**PRIMROSE HOSPICE**

Emma Williams  
Fundraising Manager  
St Godwalds Road  
Bromsgrove  
B60 3BW  
Tel: 01527 889796  
Email: emma@primrosehospice.org  
Website: www.primrosehospice.org  
Fee: Donation

1. General talk about the work of Primrose Hospice including patient care, volunteering and fundraising. A short 10 minute film about the Primrose Hospice is available to view.

**\*ST RICHARD’S HOSPICE:**

St Richard’s Hospice  
Wildwood Drive  
Worcester  
WR5 2QT  
Tel: 01905 763963  
Email: [appeals@strichards.org.uk](mailto:appeals@strichards.org.uk)  
Fee: Donation

---

1. General talk about the work of the hospice including patient care, volunteering and fundraising.
2. Your speaker will be selected from a panel of SRH personnel covering a range of specialties according to your requirements.

**SIGHT CONCERN**

David Roberts  
8 Keble Close  
Worcester  
WR4 9QE  
Tel: 01905 27631 - there is a call guardian device on this system  
Mobile: 07842 366989  
email: [daveandsue1949@icloud](mailto:daveandsue1949@icloud)  
Website: [www.sightconcern.co.uk](http://www.sightconcern.co.uk)  
Fee: Donation

---

1. Our visually impaired speakers, some of whom have guide dogs, are able to deliver a very personal account of their experience of sight loss, what challenges they’ve had to face and obstacles they’ve overcome. Their talks are inspirational, engaging and interactive.
2. They are also able to talk and demonstrate equipment/gadgets which help them in daily life.

**SPRINGFIELD MIND**

Telephone: 01789 298615  
General: [enquiries@swwmind.org.uk](mailto:enquiries@swwmind.org.uk)  
Website: [www.springfieldmind.org.uk](http://www.springfieldmind.org.uk)

Our mission is to promote mental wellbeing and to prevent mental health problems. We provide early intervention services including Mental Health First Aid courses for employers and Active Monitoring alongside GP surgeries. Our 4 hubs - Evesham, Stratford, Leamington & Warwick - offer free one to one support, walk-in sessions, community outreach and workshops.

---

**Tess Thompson  
Community Fundraising Manager  
Support Dogs - for autism, for  
epilepsy, for disability**

Tel: 0114 261 7800  
website: [www.supportdogs.org.uk](http://www.supportdogs.org.uk)  
Fee: Donation £40

Did you know? 1 in every 4 support dogs only exist thanks to gifts left to our charity in wills  
Talk on the specialist assistance dogs who transform the lives of those affected by autism, epilepsy and disability. Our dogs support children and adults affected by autism, epilepsy and disability to lead more independent and active lives. From keeping children safe, to alerting their owners prior to an oncoming seizure, from raising the alarm in emergencies to helping with a huge range of day to day tasks, our support dogs transform the lives of their families.

---

**Pam Sutton  
TROOP AID**

Unit 21 Radway Road  
Shirley  
Solihull  
B90 4NR  
Tel: 0121 7117215  
Email: [pam@troopaid.info](mailto:pam@troopaid.info)  
Fee: donation

1. Troop Aid
2. Supporting Injured Troops

**WOODLAND TRUST**

Mr Roger Tolman  
4 Battle Road  
Tewkesbury  
GL20 5TZ  
Tel: 01684 294867

Woodland Trust speaker is now available to give talks on:

1. The Woodland Trust
2. Ancient Tree Hunt

---

**WORCESTERSHIRE FORUM  
AGAINST DOMESTIC ABUSE  
AND SEXUAL VIOLENCE**

ACS, Worcestershire County Council  
E2 Pavilion, County Hall  
Spetchley Road,  
Worcester  
WR5 2NP  
Tel: 01905 822357  
Website: [www.worcestershire.gov.uk/](http://www.worcestershire.gov.uk/)

1. Stop Violence against Women

---

**WORCESTERSHIRE JOINT CLINIC**

Secretary: Kay Bolton  
Email: [kay.bolton@spirehealthcare.com](mailto:kay.bolton@spirehealthcare.com)  
Tel: 01905 362284  
Mr M Shihid FRCS  
Email: [shahidm99@icloud.com](mailto:shahidm99@icloud.com)  
Website: [www.wjointclinic.co.uk](http://www.wjointclinic.co.uk)  
**Free of Charge**

1. Minimise the Risk of Joint Problems! Keep Fit and Active - Worcester Consultant Orthopaedic Surgeon specialising in lower limb primary and revision arthroplasty, along with a physiotherapist will give a talk on keeping fit and active, minimising the risk of joint problems. They will go through specific exercises on how to keep supple etc.

---

**WORCESTERSHIRE WILDLIFE TRUST**

Mr Andrew Harris  
Lower Smite Farm  
Smite Hill  
Hindlip, Worcester WR3 8SZ  
Tel: 01905 754919  
Fee: Donation to the Trust or VSO  
Website: [www.worcswildlifetrust.co.uk](http://www.worcswildlifetrust.co.uk)

1. Worcestershire Wildlife Trust
  2. Woodland Management
  3. Heathland Conservation
- North of County related Talks. Please note that due to availability of staff coverage, appointments can only be made up to three months in advance.

---

**WEST MERCIA RAPE &  
SEXUAL ABUSE SUPPORT CENTRE**

Po Box 240  
Worcester  
WR1 2LF  
Tel: 01905 611655  
Email: [office@wmrsasc.org.uk](mailto:office@wmrsasc.org.uk)

1. Awareness of sexual abuse
2. Awareness of rape
3. Awareness of self harm/ Injury
4. Awareness of child sexual exploitation

## **SECTION 3 - WELFARE & OTHER ORGANISATIONS**

**ALCOHOL & DRUG RECOVERY SERVICE:** Tel: 0300 303 8200  
14 Castle House, Castle Street,  
Worcester WR1 3ZB **Website: [www.swanswell.org/www.talktofrank.com](http://www.swanswell.org/www.talktofrank.com)**

---

**BARNARDO'S:** Tel: 0121 550 5271  
Brooklands, Great Cornbow,  
Halesowen, West Midlands, B63 3AB **Website: [www.barnardos.org.uk](http://www.barnardos.org.uk)**

---

**CITIZENS ADVICE BUREAU:** Tel: 0344 411 1303  
**Bromsgrove & Redditch - 50-52**  
Birmingham Rd, Bromsgrove, B61 0DD **Website: [www.citizensadvice.org.uk](http://www.citizensadvice.org.uk)**

**Droitwich** - Victoria Square, Droitwich  
WR9 8DQ

**Evesham** - 13 Port St, Evesham  
WR11 3LD

**Halesowen** - 11-15 Queensway,  
Halesowen B63 4AZ

**Stourbridge** – 69 Market St,  
Stourbridge DY8 1AQ

**Wyre Forest** – 21 New Road,  
Kidderminster DY10 1AF

**Worcester** - The old glove factory,  
13a Lowesmoor, Worcester WR1 2RS

---

**CITIZENS ADVICE WITNESS SERVICE** Bev Carty – 07738329320  
Email: [Beverley.carty@citizensadvice.org.uk](mailto:Beverley.carty@citizensadvice.org.uk)

---

**DEPARTMENT FOR WORK & PENSIONS:**  
Vine House, Farrier Street, Worcester  
WR1 3EL

---

**DEPARTMENT FOR ENVIRONMENT  
FOOD & RURAL AFFAIRS** Tel: 01905 355355  
**Website: [www.gov.uk/government/organisations/  
department-for-environment-food-rural-affairs](http://www.gov.uk/government/organisations/department-for-environment-food-rural-affairs)**

---

**RELATE WORCESTERSHIRE:** Tel: 01905 28051  
19 Castle Street, Worcester WR1 3AD **Website: [www.relate.org.uk](http://www.relate.org.uk)**

**SALVATION ARMY:**  
The Trinity, Worcester WR1 2PN

Tel: 01905 28774  
**Website: [www.salvationarmy.org.uk](http://www.salvationarmy.org.uk)**

---

**SAMARITANS:**  
9 Sansome Place, Worcester WR1 1UA

Tel: 08457 909090 or 01905 21121  
**Website: [www.samaritans.org](http://www.samaritans.org)**

---

**ST. JOHN AMBULANCE**

Tel: 08700 104950  
**Website: [www.sja.org.uk](http://www.sja.org.uk)**

---

**WORCESTER CITY COUNCIL**  
Worcestershire Hub Customer Service  
Centre, The Hive, Sawmill Walk,  
The Butts, Worcester, WR1 3PB

Tel: 01905 722233  
Emergency out of hours: 01562 733178  
**Website: [www.worcester.gov.uk](http://www.worcester.gov.uk)**

---

**W.R.V.S:**  
Worcestershire Royal Hospital,  
Charles Hastings Way, Worcester,  
Worcestershire WR5 1DD

Tel: 0845 608 0122  
**Website: [www.royalvoluntaryservice.org.uk](http://www.royalvoluntaryservice.org.uk)**

---

**WORCESTERSHIRE  
BEREAVEMENT SUPPORT:**  
58 Wilden Lane, Stourport on Severn

Tel: 01299 823333  
**Website: [www.bereavementsupportworcestershire.org.uk](http://www.bereavementsupportworcestershire.org.uk)**



## **SECTION 4 – SPEAKERS FROM WFWI SUB – COMMITTEES**

### **CRAFT COLLECTION**

C/o Creative Activities Sub-committee

There are now well over a hundred beautiful items in our Craft Loan Collection which have been given or lent to the WI over the years. They range from the oldest, a beautiful late 19th Century silk evening bag, to expert examples of modern crafts with all decades in between, from tatting to wood turning and from smocking to metal work. Among the most interesting are those which illustrate the early history of the WI's teaching role, and include garments made to show different finishing skills and techniques, as well as saleable items of the time such as exquisite gloves.

A member of the Creative Activity Committee will be happy to bring a selection of the Collection to your WI and to talk about what we know of the pieces. With some we have a full history, or at least know the origin and where possible, will bring examples related to your WI. Otherwise we hope you will enjoy seeing and hearing about these, literally, state of the art, varied examples of WI craft skills.

The only fees are £10 to help with the costs of keeping and conserving the collection, and a payment of travelling expenses to the presenter.

For further information or to book the Collection contact Trudi at WI House on [events@wfedwi.org.uk](mailto:events@wfedwi.org.uk)

---

**PUBLIC AFFAIRS** – Happy to give talks on subjects relating to Public Affairs including NFWI Resolution mandates and updates on ongoing resolutions and campaigns.

---

**PERFORMING ARTS (LEISURE & ARTS)** – **This committee has now merged with Leisure & Pleasure committee to form Leisure & Arts.** They remain happy to give help and advice to any members wishing to start a choir or a drama group; due to limited numbers, performances at WI meetings are very limited and will be addressed on an individual basis.

---

**No responsibility is accepted by the  
Worcestershire Federation of WIs  
for advertisements in this Year Book**

# BOTANY BAY



Nurseries, Garden Centre and Café

- \* Superb Quality Plants
- \* Garden Furniture
- \* Garden Care & Pots
- \* Houseplants
- \* Bird & Wildlife Care
- \* Gifts & Home



**Your Local Independent Garden Centre**  
**Botany Bay Nurseries, Garden Centre & Café**

Edgioake Lane, Astwood Bank, Redditch, B96 6BG

01527 893 885

[www.botany-bay.co.uk](http://www.botany-bay.co.uk)

**ANJA POTZE**  
FINE JEWELLERY LTD



Creating bespoke jewellery, using ethically sourced certified diamonds and the finest pearls

10 Friar Street, Worcester - 01905 20944  
www.anjapotze.com

Thanks  
for your  
Advertising!



*There is more to a needle museum than meets the eye...*



**Did you know that Redditch was famous for producing 90% of the world's needles in Victorian times?**

- See a Victorian scouring mill
- Group visits • Events
- Temporary exhibitions including textiles
- Play area

Enjoy light refreshments at  
*Mill View*  
COFFEE BAR

[www.forgemill.org.uk](http://www.forgemill.org.uk) 01527 62509  
Needle Mill Ln, Riverside, Redditch, B98 8HY



**ISABELLA FISHER**  
Independent Hearing Care



*"We listen so you can hear"*



**Micro-suction ear wax removal**

Micro-suction is the safest, most effective method of removing wax from the ear

- State of the art equipment
- Video Otoscopy to show you the condition of your ears before and after
- Highly experienced clinicians who are always happy to listen and answer any questions you may have regarding your ears and hearing

**Book your appointment today**

Cotswold Suite, New Barn Close Surgery, Station Road,  
Broadway, WR12 7DE

Telephone: **01386 340994**

Web: [www.isabellahearing.co.uk](http://www.isabellahearing.co.uk) Email: [isabella@isabellahearing.co.uk](mailto:isabella@isabellahearing.co.uk)

**WI TO SEND TO SPEAKER**

<p><b>WI CONTACT DETAILS</b></p> <p><b>WI:</b> .....</p> <p><b>ADDRESS:</b> .....</p> <p>..... <b>POSTCODE:</b> .....</p> <p><b>TELEPHONE / EMAIL:</b> .....</p>
--

Date: .....

Dear .....

We are making up our programme of speakers for 20..... and would like to invite you to give us a ..... minute Demonstration/Lecture/Talk on the following subject: .....

We meet in ..... (place) and would be ready for you to speak at ..... (time). The dates available are: .....

Please note that any items you may wish to sell (unless you represent a British based Marketing Board) should be notified to the WI at the time of booking and a percentage commission may be taken.

Yours sincerely

..... **Programme Secretary**

**SPEAKER TO RETURN TO WI**

**REPLY FORM**

<b>NAME</b>	
<b>ADDRESS</b>	
<b>TELEPHONE / EMAIL</b>	
<b>SUBJECT</b>	
<b>DETAILS OF INTEREST</b>	
<b>FEE / EXPENSES</b>	
<b>DATE OF TALK</b>	
<b>EQUIPMENT NEEDED</b>	
<b>OTHER REQUIREMENTS</b>	

**To be handed to Treasurer on arrival**

**Date:** .....

**Speaker / Fee:** .....

**Received (Signature):** .....



# ISABELLA FISHER

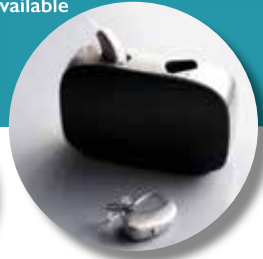
Independent **Hearing Care**



*“We listen so **you** can hear”*

We are your local, independent hearing healthcare professionals. With our experience and person centred approach, we can provide you with the care and products you need to overcome one of the most common yet ignored health problems, allowing you to live life to the full.

- Family owned business with over 30 years experience in the hearing healthcare industry
- Access to the leading manufacturers with the latest technology hearing solutions
- Tailor made aftercare and support
- Micro-suction ear wax removal
- Home visits available



Cotswold Suite, New Barn Close Surgery,  
Station Road, Broadway, WR12 7DE

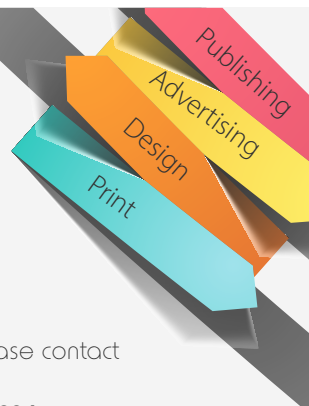
Telephone: **01386 340994**

Web: [www.isabellahearing.co.uk](http://www.isabellahearing.co.uk)  
Email: [isabella@isabellahearing.co.uk](mailto:isabella@isabellahearing.co.uk)

**Book your  
FREE hearing  
check today**

# Lancemedia

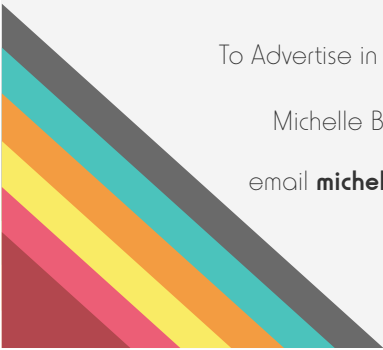
Group Ltd



To Advertise in this publication please contact

Michelle Breen on **01536 334 224** or

email [michelle@lancemediagroup.co.uk](mailto:michelle@lancemediagroup.co.uk)





# DORSET HOUSE

NURSING HOME



## Enriching the lives of the older generation

We'll take care of your Residential or Nursing needs in our award-winning care home for older people in the heart of Droitwich Spa.



Arrange a visit & meet our wonderful teams:  
A: Droitwich Spa, WR9 8DR T: 01905 772710

[WWW.DORSETHOUSE.CARE](http://WWW.DORSETHOUSE.CARE)

## NOTES



## NOTES

# LET'S HEAR IT FOR THE GIRLS



Background image - Freepik.com

Book online at  
**WWW.HENRICIAN.ORG**  
 Group Discounts  
  
 Award Winning  
 Local Amateur Theatre

## JOIN EODS IN 2023/2024



## LET'S HEAR IT FOR THE GIRLS WITH EODS

**Evesham Operatic and Dramatic Society are making it all about the girls for their 2023/2024 production season!**

**Calendar Girls** comes to The Henrician, Evesham from 14-18 November 2023 with **Funny Girl** taking centre stage from 14-18 May 2024.

Performances start at 1930, with an additional Saturday matinee.

These amateur productions are presented by arrangement with Concord Theatricals and Tams-Witmark, a Concord Theatricals Company.

**So, what are you waiting for? For the ultimate girl's night out, book your tickets now!**



Elmslie House is a private home and venue in Great Malvern - with a difference.

Designed and built in 1862 by Edmund Wallace Elmslie it is a Victorian Free Gothic mansion. Bought by its current owners in 2013 and extensively renovated, parts of the ground floor and the lower ground floor now operate as a small but thriving independent arts venue, as well as it being a family home.

Hosting not only regular weekly exercise, singing and art classes, but Art exhibitions, wedding receptions, twice yearly Blue Magpie craft fairs, talks, USA clubs and lots more, in 2022 they launched a series of weekend craft workshops – Elmslie Creates - to run alongside these existing week-day classes, but also to provide a link to the designer-makers who exhibit at Blue Magpie Fairs.

Elmslie are looking to add more courses for Spring 2024.

All the courses are small, tutor led, one- or two-day courses with all materials, refreshments and a 2 course home-made lunch included. Be sure to check the website for updates or visit: [www.elmsliehouse.co.uk/creativecourses](http://www.elmsliehouse.co.uk/creativecourses)



Elmslie House is both an elegant venue and a private family home in the heart of Great Malvern.

Parts of the house are open to the public for regular music recitals & performances, exercise & art classes, Art exhibitions, twice yearly craft fairs, talks, seminars, craft workshops and more!

For full listings you check out our website or Instagram accounts @elmsliehousemalvern/@bluemagpiecraft and we're on Facebook too. You can sign up to receive newsletters at:

[www.elmsliehouse.co.uk](http://www.elmsliehouse.co.uk)

4th day added - now even more designer makers to see!

## CONTEMPORARY CRAFT FAIR

**Thursday 16th - Sunday 19th November**

10.30am - 4.00pm. Adults £3, accompanied children free



@bluemagpiecraft

[www.bluemagpie.co.uk](http://www.bluemagpie.co.uk)



Join us and 80 makers to find that perfect Christmas gift.  
Daily changing line up over two floors - with a tea room!

**Wristband allows entry over all 4 days**

Elmslie House, 8 Avenue Road, Malvern WR14 3AG



**VALUATIONS FOR SALE, INSURANCE & INHERITANCE TAX**  
WE HOLD REGULAR CATALOGUED AUCTIONS OF FINE ART AND ANTIQUES  
SPECIALISING IN ROYAL WORCESTER PORCELAIN.



THE ROYAL WORCESTER PLATE,  
SIGNED BY F ROBERTS,  
SOLD FOR £500

THE ROYAL WORCESTER VASE,  
SIGNED HH PRICE,  
SOLD FOR £950



ENTRIES & ENQUIRIES: THE MALVERN SALEROOM - BARNARDS GREEN ROAD  
MALVERN - WORCESTERSHIRE - WR14 3LW

[www.serrell.com](http://www.serrell.com) - 01684 892314 - [auctions@serrell.co.uk](mailto:auctions@serrell.co.uk)



**PHILIP  
SERRELL**  
auctioneers & valuers

Philip has been an auctioneer for over 40 years. He specialises in the sale and value of Royal Worcester Porcelain as well other Fine Art and Antiques, with clients all over the world.




**Fine Art and Antiques and Interiors Sales every 3 weeks**

[www.serrell.com](http://www.serrell.com)  
01684 892314 | [auctions@serrell.co.uk](mailto:auctions@serrell.co.uk)



## Bennetts Farms





Once again delivering fresh milk & milkshakes straight from the farm around Worcester & Malvern, in vintage electric milkfloats - just like the good old days!

- Zero food miles
- 100% recyclable bottles
- Low carbon delivery footprint
- Locally sourced groceries also available
- Cut out that mid-week essentials shop

Create your account & manage orders & payments online at: [www.bennettsfarms.co.uk](http://www.bennettsfarms.co.uk) or call us on **01905 422223**

Or you can buy our milk & milkshakes in re-usable glass bottles from our new farm cafe, Bennetts Willow Barn, at Manor Farm in Lower Wick, WR2 4BS











**Farm cafe on our working dairy farm.**

Homemade food made using locally sourced produce, including our homemade butter, mozzarella & clotted cream, and of course Bennetts Ice Cream, from our own cows' milk.

Afternoon teas, cream teas, stone baked pizzas, milkshakes and more, with a licensed beer garden to enjoy when the sun shines.

Parties, weddings and all kinds of events.

at Manor Farm In Lower Wick, Worcester, WR2 4BS

For more information, please visit [www.bennettswillowbarn.co.uk](http://www.bennettswillowbarn.co.uk)
















# THE ROSE THEATRE

CHESTER RD NORTH, KIDDERMINSTER DY10 2RX  
01562 743745 | [WWW.ROSETHEATRE.CO.UK](http://WWW.ROSETHEATRE.CO.UK)

Our recent production of Dibley



Calendar Girls



Kidderminster's only theatre is home to the Nonentities, a talented amateur company formed over 80 years ago, who produce a varied season of entertaining and thought-provoking plays.

We also welcome professional theatres companies, musical shows and comedy acts – there is always something new to see.

Why not visit our website and see what's on? [www.rosetheatre.co.uk](http://www.rosetheatre.co.uk)

*A warm welcome awaits  
you at the Rose Theatre  
in Kidderminster!*



Many of you will have already visited our friendly theatre on the outskirts of Kidderminster. Some of you came to see our production of Calendar Girls last season; some of you are regular patrons and a few WIs are members! Whatever your contact has been, we invite you to come again to see one of our shows, whether as part of an organised group trip for which discounts are available, or as individuals with friends and family. We have a lovely bar and refreshment area and free parking nearby. If you would like to use our studio area to meet as a group beforehand and during the interval for refreshments, we can arrange it.

Are you looking for a new hobby or interest? Whether it be treading the boards, wielding a hammer in the workshop, or becoming part of our Front of House team, we are always looking for new recruits.

Are you looking for a speaker for your meetings? Our members are always willing to give talks about the Rose Theatre and its history or we can focus on props and costumes – whatever your members would be interested in. Likewise, if you would like a backstage tour of the theatre, we are always happy to oblige and provide refreshments.

All our contact details are below. If you would like to contact me directly, please do so: [annebooth71@gmail.com](mailto:annebooth71@gmail.com). I look forward to meeting you! Anne Booth (Publicity Manager).

01562 743745 | [WWW.ROSETHEATRE.CO.UK](http://WWW.ROSETHEATRE.CO.UK)

## HOUSE OF SMOCKING

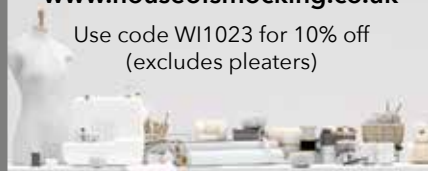
For all your Smocking  
and Heirloom projects

We stock patterns,  
smocking pleaters  
lace, iron on dots,  
Swiss fabrics,  
Piques, Batistes  
Liberty Tana Lawn  
and so much more



[www.houseofsmocking.co.uk](http://www.houseofsmocking.co.uk)

Use code WI1023 for 10% off  
(excludes pleaters)







The National Memorial Arboretum is the Nation's year-round place to remember a spiritually uplifting place, that celebrates lives lived and commemorates lives lost. Set within 150-acres of grounds and woodlands, the beautifully maintained gardens punctuated with thought-provoking memorials offer something for everyone.

Onsite there are a range of activities for groups to enjoy. Daily at 11am, the Act of Remembrance takes place in the Millennium Chapel, followed by a free welcome talk explaining the Arboretum's extraordinary development.

A popular choice for groups is the Land Train which enables visitors to see a large proportion of the Arboretum from the comfort of a covered train carriage. Group visitors can also book guided walks where specialist guides reveal the fascinating stories behind many of the memorial.

In the Remembrance Centre, an interactive exhibition Landscapes of Life elaborates on the history of Remembrance and is accompanied by temporary exhibitions that feature remembrance and nature at their heart. Here, visitors will also find a large onsite Restaurant serving a range of meals, snacks and delicious cakes.

The Arboretum is free to enter and is open every day except Christmas Day. For more information or to book call **01283 245 100** or email **groups@thenma.org.uk**.

## Audley Ellerslie

The future is always brighter when it's one tailored to you. At Audley you can live the life you love, keep your highly valued independence, and own your own property, because when you've worked hard to become the person you are today, we believe you shouldn't have to change your lifestyle when you retire. We look after the maintenance and security of your property and the grounds, leaving you free to spend your time however you wish. You could explore the stunning landscaped gardens, enjoy fine dining in our restaurant, indulge in some pampering at the Audley Club or keep up your love of travel knowing your home is safe and sound. Care and support services are also on hand should you ever need it.

Audley Ellerslie; set at the foot of the Malvern Hills, opened its doors in October 2018 and boasts 101 luxury apartments. At Ellerslie you can expect to find a swimming pool, fitness suite, spa treatment rooms and a hair salon. There is a bistro for casual dining and an a la carte restaurant for more formal dining, plus a private dining room for any special occasions. At the village you will also find a library and owners' lounge within the main house.

Exclusively for over 60 year olds, owning a home at Ellerslie gives you a truly independent lifestyle in a beautiful and secure environment.

**If you or someone you know would like to explore this village with a private tour, please contact us via email at [ellersliesales@audleyvillages.co.uk](mailto:ellersliesales@audleyvillages.co.uk) or call 01684 491002.**



# The perfect day out for groups



## Enjoy:

- Land train tours with pre-recorded commentary
- Guided walks with expert volunteers
- Large Restaurant with delicious lunch packages
- Easy coach parking
- Indoor exhibitions
- A daily act of Remembrance
- Award-winning gift shop
- Calendar full of events

For more information please call us on **01283 245 143** or email **groups@thenma.org.uk**



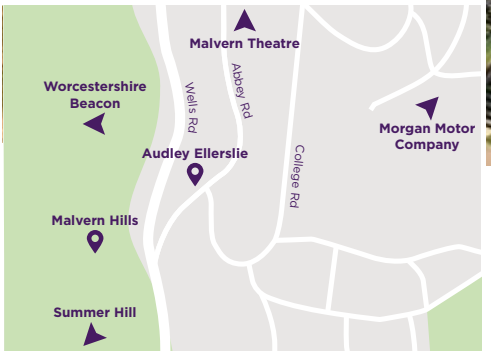
**National Memorial Arboretum**  
Part of the Royal British Legion

Croxall Road, Alrewas,  
Staffordshire DE13 7AR  
**thenma.org.uk**

T: 01283 245 143  
E: groups@thenma.org.uk  
Charity No. 1043992



BOOK YOUR  
PRIVATE TOUR  
TODAY



## AUDLEY ELLERSLIE OWN YOUR RETIREMENT

Audley Ellerslie is an exclusive over 60's development where you can own your own property, keep your highly valued independence, and live the life you love. Set within the charming town of Great Malvern, three grand Victorian mansions, including a Grade II listed building form the centre of the village, offering you an attractive and secure environment.

Book a private tour today to view the stunning show apartment along with our restaurant, Aldwyn's, and the Audley Club that comprises of a pool, gym and beauty rooms.



Call for more information or to book your tour.

01684 491 002

[www.audleyvillages.co.uk/visittelerslie](http://www.audleyvillages.co.uk/visittelerslie)



Scan to find  
out more