

2024 NEW PRODUCTS+



ASB



CCM

INTRODUCING

ALL-DAY CORE BASICS

An All New Collection that combines
"Wow" Pricing and Augusta Quality
for an Unbeatable Value



6961
pg. 15

6950
pg. 14



6959
pg. 15



6955
pg. 29

6957
pg. 29

NEW PRODUCTS LINE-UP

| | |
|-----------------------|----|
| Headwear | 4 |
| Fanwear | 13 |
| Outerwear | 20 |
| Fleece | 28 |
| Training | 30 |
| Baseball | 34 |
| Softball | 36 |
| Basketball | 38 |
| Soccer | 40 |
| Football | 42 |
| Cheer | 44 |
| FreeStyle Sublimation | 46 |
| Bags | 70 |
| Collections | 72 |

ICONS

| | |
|---|--|
| color secure® color secure® technology helps prevent dye migration | |
| Dry-Excel™ Moisture evaporation and wicking fabric | |
| Moisture Management Fabric wicks moisture away keeping the body cool & dry | |
| Odor Resistant Odor Resistant technology keeps garments fresher longer | |
| 4-Way Stretch Stretch properties allow for increased mobility | |
| UPF Garment protects against harmful UV rays | |
| Water Resistant Resists rain & water to keep the body protected & dry | |

AUGUSTASPORTSWEAR.COM

©2023 Augusta Sportswear, Inc.
Prices subject to change without notice

NEW

LOW-PROFILE STRIPE TRUCKER CAP

P115 Adult One Size MSRP 13.00

- Polyester/cotton blend
- Trucker mesh side and back panels
- Low profile
- Slight curved visor
- Pro-stitched finish



BIRCH/
LT CHARCOAL/
BIRCH
890



BLACK/
WHITE
420



BLACK/
WHITE/
BLACK
419



BROWN/
KHAKI/
BROWN
14P



GRAPHITE/
WHITE/
BLACK
196



GRAPHITE/
WHITE/
GRAPHITE
197



MAROON/
WHITE/
MAROON
381



MOSS/
LT CHARCOAL/
MOSS
89V



NAVY/
WHITE/
NAVY
122



SILVER/
WHITE/
SILVER
79Q



Back



223540

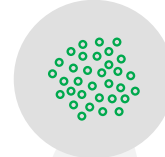
ecoREVIVE™
MADE FROM SUSTAINABLE MATERIALS



FEEL GOOD
ABOUT WHAT
YOU WEAR.



PLASTIC
BOTTLES
COLLECTED



MELTED
INTO
PELLETS



TO
CREATE
FIBERS



WOVEN INTO
RECYCLED
FABRIC



NEW

ECO-REVIVE BEANIE

P605K Adult One Size MSRP 11.60

- Eco-Revive product featuring recycled 100% polyester
- 4-inch rolled cuff



NAVY
065



CREAM
002



WHITE
005



BLACK
080



SILVER
099



BUCK
16P



LOOEN
46S



VENTURA COLLECTION

ecoREVIVE®
SUSTAINABLE FABRIC TECHNOLOGY

2024 NEW PRODUCTS | FANWEAR

223705



Back



NEW

LADIES VENTURA CARDIGAN

223705 Ladies XS-2XL MSRP 45.00

- Ventura Suede Knit 6.34-ounce
- Solids, 89% recycled polyester/11% spandex
- Heathers, 45% recycled polyester/44% polyester/11% spandex
- Tag-free label
- Dropped shoulder sleeves for mobility and comfort
- Side seam pockets
- Dual inside pockets



BIRCH
907

BLACK
080

CARBON HEATHER
039

GREY HEATHER
01

222799

TO SEE MORE FROM THE VENTURA COLLECTION, **SEE PAGE 96** | 13



NEW

ALL-DAY CORE BASIC 50/50 TEE

| | | | |
|-------------|-------|-------|-----------|
| 6950 | Adult | S-5XL | MSRP 6.60 |
| 6951 | Youth | XS-XL | MSRP 5.60 |

- 50% polyester/50% cotton
- 90% cotton/10% polyester on platinum heather colorway
- Tear away label
- Set-in sleeves



COBALT BLUE
062



MIDNIGHT BLUE
067



JET BLACK
081



CHEERY RED
085



ONYX HEATHER
146



PLATINUM HEATHER
170



ULTRA WHITE
803

YOUR NEW ALL-DAY CORE BASICS

Everyday Comfort at Great Value
that's Reliable & Versatile



NEW

ALL-DAY CORE BASIC TRI-BLEND TEE

| | | | |
|-------------|-------|-------|-----------|
| 6959 | Adult | S-4XL | MSRP 8.50 |
| 6960 | Youth | S-L | MSRP 7.50 |

- 50% polyester/37% cotton/13% rayon
- Tear away label
- Set-in sleeves

WHITE
005GREY HEATHER
013BLACK HEATHER
K94NAVY HEATHER
U22ROYAL HEATHER
U55RED HEATHER
V96

TO SEE MY FROM THE ALL-DAY CORE
BASIC COLLECTION, SEE PAGE 90

NEW

LADIES ALL-DAY CORE BASIC TRI-BLEND TEE

| | | | |
|-------------|-------|--------|-----------|
| 6961 | Adult | XS-3XL | MSRP 8.50 |
|-------------|-------|--------|-----------|

- 50% polyester/37% cotton/13% rayon
- Tear away label
- Set-in sleeves

WHITE
005GREY HEATHER
013BLACK HEATHER
K94NAVY HEATHER
U22ROYAL HEATHER
U55RED HEATHER
V96



MONTEREY COLLECTION



222845

222745

Back



NEW

MONTEREY HOODIE

Dry-
Excel.

222745 Adult XS-3XL MSRP 34.00

222845 Ladies XS-2XL MSRP 34.00

- Eco-Revive® product featuring 95% recycled polyester/5% cotton
- Ladies' fit on style 222845
- Tag-free label

- 3-panel hood with drawcord (no drawcord on XS)
- V-neck on Ladies
- Front pouch pocket
- Set-in sleeves on Adult
- Dropped shoulder sleeves for mobility and comfort on Ladies'
- Curved bottom with dropped tail hem on Ladies'

ecoREVIVE®
SUSTAINABLE FABRIC TECHNOLOGY

Available in Adult Only

Available in Ladies Only



ATHLETIC
HEATHER
018

BIRCH
907

BLACK
HEATHER
R34

CARBON
HEATHER
E83

DARK GREEN
HEATHER
V97

MAROON
HEATHER
T09

NAVY
HEATHER
U22

OLIVE
HEATHER
49N

ROYAL
HEATHER
U55

SCARLET
HEATHER
T20

CELERY
S4T

DUSTY ROSE
HEATHER
Z0N

NEW

**LADIES MONTEREY
LONG SLEEVE TEE**



| | | | |
|---------------|--------|-------|------------|
| 223246 | Ladies | S-2XL | MSRP 26.00 |
| 223346 | Girls | S-L | MSRP 25.00 |

- Eco-Revive® product featuring 95% recycled polyester/5% cotton
- Tag-free label
- Lace up v-neck (crewneck on girls')
- Set-in sleeves



ATHLETIC HEATHER/WHITE 152
BIRCH HEATHER/CARBON HEATHER 112
BLACK HEATHER/WHITE 56N
CARBON HEATHER/ATHLETIC HEATHER 019
DARK GREEN HEATHER/WHITE 86E



MAROON HEATHER/WHITE 61N
NAVY HEATHER/WHITE 57N
ROYAL HEATHER/WHITE 58N
SCARLET HEATHER/WHITE 59N

Available in Girls only



ATHLETIC HEATHER/WHITE 152
BLACK HEATHER/WHITE 56N
NAVY HEATHER/WHITE 57N



ROYAL HEATHER/WHITE 58N
SCARLET HEATHER/WHITE 59N

223246



223245



223346



NEW

LADIES MONTEREY TEE



| | | | |
|---------------|--------|-------|------------|
| 223245 | Ladies | S-2XL | MSRP 22.00 |
| 223345 | Girls | S-L | MSRP 21.00 |

- Eco-Revive® product featuring 95% recycled polyester/5% cotton
- Tag-free label
- V-neck collar
- Set-in sleeves

Available in Girls



BIRCH HEATHER/CARBON HEATHER 112
CARBON HEATHER/ATHLETIC HEATHER 019
DARK GREEN HEATHER/WHITE 86E
MAROON HEATHER/WHITE 61N
ATHLETIC HEATHER/WHITE 152
BLACK HEATHER/WHITE 56N
NAVY HEATHER/WHITE 57N
ROYAL HEATHER/WHITE 58N
SCARLET HEATHER/WHITE 59N



Back

NEW GIRLS STYLE

LADIES FANATIC 2.0 TEE

| | | | |
|-------------|--------|---------|------------|
| 2914 | Ladies | XXS-3XL | MSRP 18.40 |
| 2915 | Girls | S-L | MSRP 17.70 |

- 3.8 ounce, 50% polyester/38% cotton/12% rayon tri-blend knit (colors)
- 4.7 ounce, 50% polyester/38% cotton/12% rayon tri-blend knit (white)
- Tag-free label
- Set-in sleeves with angled shoulder seam for mobility and comfort
- Dropped tail hem



CARBON
HEATHER/
WHITE
99E

GREY
HEATHER/
BLACK
73S

GREY
HEATHER/
NAVY
663

PURPLE/
WHITE
450

Available in Girls



BLACK/
GREY
HEATHER
92T

NAVY/
WHITE
301

ROYAL/
WHITE
280

SCARLET/
WHITE
408

WHITE/
GREY
HEATHER
91T



Back

NEW GIRLS STYLE

LADIES FANATIC 2.0
LONG SLEEVE TEE

| | | | |
|-------------|--------|---------|------------|
| 2917 | Ladies | XXS-3XL | MSRP 22.20 |
| 2918 | Girls | S-L | MSRP 21.40 |

- 3.8 ounce, 50% polyester/38% cotton/12% rayon tri-blend knit (colors)
- 4.7 ounce, 50% polyester/38% cotton/12% rayon tri-blend knit (white)
- Tag-free label
- Scoop neck
- Raglan sleeves



CARBON
HEATHER/
WHITE
99E

GREY
HEATHER/
BLACK
73S

GREY
HEATHER/
NAVY
663

PURPLE/
WHITE
450

Available in Girls



BLACK/
GREY
HEATHER
92T

NAVY/
WHITE
301

ROYAL/
WHITE
280

SCARLET/
WHITE
408

WHITE/
GREY
HEATHER
91T





R23TFM

R23SWM



Back



NEW

LEGEND TECH FLEECE HOODIE

R23TFM Adult S-4XL MSRP 80.00

- 66% cotton/34% polyester tech fleece
- 100% polyester, waterproof shoulders, hood and back yoke
- 3-piece jersey lined hood with drawcord
- Weld tape accent at shoulders and back yoke
- Set-in sleeves
- Front zippered valuables pocket with weld tape accent
- Front pouch pocket
- Elastic cuffs and bottom band



BLACK
BLK

NAVY
NAV

STEALTH
SHL

WHITE/
GRIDIRON SILVER
A9B



NEW

LEGEND PANT

R23SWM Adult XS-4XL MSRP 56.00

- 90% polyester/10% spandex lightweight stretch woven fabric with durable water-repellent finish to keep you dry
- Heat sealed label
- Elastic waistband with inside drawcord
- Side seam pockets
- Welt zippered pocket on wearer's left leg
- Back zippered pocket with zipper garage

Available in 4XL



KHAKI
010

NAVY
NAV

STEALTH
SHL

BLACK
BLK



R20SWM



Back



LEGEND SHORT SLEEVE TECH FLEECE HOODIE

NEW

R24TFM Adult S-4XL MSRP 72.00

- 66% cotton/34% polyester tech fleece
- 3-piece jersey lined hood with drawcord
- Raglan sleeves
- Front zippered valuables pocket with weld tape accent
- Front pouch pocket



BLACK
BLK

NAVY
NAV

STEALTH
SHL

WHITE/
GRIDIRON SILVER
ASB



CHILL FLEECE 2.0 COLLECTION

6852

6854

ecoREVIVE®
SUSTAINABLE FABRIC TECHNOLOGY

Back

MORE FROM THE CHILL FLEECE 2.0 COLLECTION



COORDINATING
1/2 ZIP PULLOVER
6855 | 6856 | 6857



COORDINATING
FULL ZIP HOODIE
6858 | 6859 | 6860



COORDINATING
HEADBAND
6893

NEW

CHILL FLEECE VEST 2.0

| | | | |
|-------------|---------|--------|------------|
| 6852 | Adult | S-3XL | MSRP 40.00 |
| 6854 | Ladies' | XS-2XL | MSRP 40.00 |

- Eco-Revive® product featuring 8 ounce, 70% recycled polyester/30% polyester
- Ladies' fit on style 6854
- Hanger loop label
- Front zippered pockets
- Spandex bound sleeve holes
- Open bottom



BLACK
080

GRAPHITE
059

NAVY
065

OLIVE
039

OYSTER
531

STORM
932



Back



223747



223547

229559

NEW

V-STREET FULL-ZIP JACKET

| | | | |
|---------------|--------|-------|------------|
| 223547 | Adult | S-3XL | MSRP 64.00 |
| 223647 | Youth | S-XL | MSRP 63.00 |
| 223747 | Ladies | S-2XL | MSRP 64.00 |

- 100% polyester double-knit
- Ladies fit on style 223747
- Set-in sleeves
- Front pockets
- Dual inside pockets
- Striped rib-knit collar, cuffs and bottom band



ATHLETIC HEATHER/
WHITE
152

BLACK/
WHITE
420

NAVY/
WHITE
301

222702



ROYAL/
WHITE
280

SCARLET/
WHITE
408

WHITE/
ATHLETIC HEATHER
510



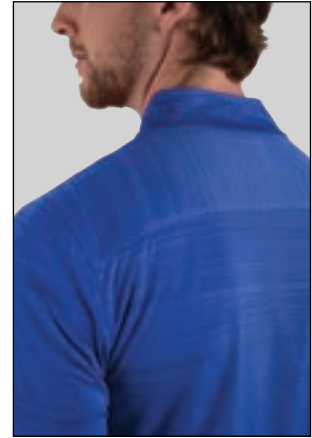
NEW

ALPINE SWEATER FLEECE
1/4 ZIP PULLOVER

| | | | |
|---------------|--------|--------|------------|
| 223540 | Adult | S-3XL | MSRP 60.00 |
| 223740 | Ladies | XS-2XL | MSRP 60.00 |

- Eco-Revive® product featuring 80% recycled polyester/20% polyester
- Ladies' fit on style 223740
- Hanger loop label
- Set-in sleeves
- Front zippered pockets
- Open bottom





Back



PURSUIT 1/4 ZIP PULLOVER

| | | | |
|-------------|--------|-------|------------|
| 7011 | Adult | S-4XL | MSRP 30.00 |
| 7012 | Ladies | S-3XL | MSRP 30.00 |

- 100% polyester interlock textured knit with tonal stripe design
- Ladies' fit on style 7012
- Tag-free label
- Set-in sleeves with rolled forward shoulder seam
- Set-in sleeves
- Side vents
- Contoured bottom on Ladies'
- Cross grain back yoke



ATHLETIC GREY
009

BLACK
080

NAVY
065



ROYAL
060

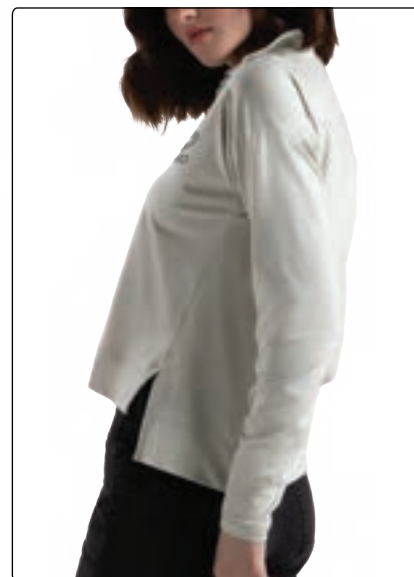
SCARLET
083



223553



223753



Split hem on Ladies'



NEW

VENTURA 1/4 ZIP PULLOVER

| | | | |
|---------------|--------|--------|------------|
| 223553 | Adult | S-3XL | MSRP 50.00 |
| 223753 | Ladies | XS-2XL | MSRP 50.00 |

- Ventura Suede Knit 6.34-ounce
- Solids, 89% recycled polyester/11% spandex
- Heathers, 45% recycled polyester/44% polyester/11% spandex
- Ladies fit on style 223753
- Tag-free label
- Quarter zip pullover with covered placket zipper
- Set-in sleeves with rolled forward shoulder seam on Adult
- Dropped shoulder sleeves for mobility and comfort on Ladies'
- Side vents
- Modest cropped length with drop tail on Ladies'





223558

229531



223758

229731



NEW

SERIESX FULL-ZIP JACKET

| | | | |
|---------------|--------|--------|------------|
| 223558 | Adult | S-3XL | MSRP 56.00 |
| 223658 | Youth | S-XL | MSRP 55.00 |
| 223758 | Ladies | XS-2XL | MSRP 56.00 |

- Micron™ polyester is a lightweight, wind/water-resistant fabric
- 100% polyester micromesh lining
- Ladies fit on style 223758
- Set-in sleeves
- Front zippered pockets
- Elastic cuffs
- Adjustable bottom hem with hidden shockcord closure in right pocket on Adult and Ladies



BLACK
080

CARBON
J96

NAVY
065



NEW

CROSSTOWN JACKET

| | | | |
|---------------|--------|-------|------------|
| 223530 | Adult | S-3XL | MSRP 42.00 |
| 223630 | Youth | S-XL | MSRP 41.00 |
| 223730 | Ladies | S-2XL | MSRP 42.00 |

- Dry-Excel™ 100% polyester double-knit
- Dry-Excel™ 100% polyester mesh inserts
- Ladies' fit on style 223730
- Set-in sleeves
- Front zippered pockets
- Open bottom



BLACK/
BLACK
425

BLACK/
WHITE
420

GRAPHITE/
WHITE
R04

NAVY/
WHITE
301



ROYAL/
WHITE
280

SCARLET/
WHITE
408

WHITE/
BLACK
226

223730

223530



223731

223531



NEW

CROSSTOWN PANT

| | | | |
|---------------|--------|-------|------------|
| 223531 | Adult | S-3XL | MSRP 40.00 |
| 223631 | Youth | S-XL | MSRP 39.00 |
| 223731 | Ladies | S-2XL | MSRP 40.00 |

- Dry-Excel™ 100% polyester double-knit
- Dry-Excel 100% polyester mesh inserts
- Ladies' fit on style 222731
- Covered elastic waistband with inside drawcord
- Side seam pockets
- Tapered leg
- Zipper on outside lower leg



BLACK/
BLACK
425

BLACK/
WHITE
420

GRAPHITE/
WHITE
R04

NAVY/
WHITE
301

ROYAL/
WHITE
280

SCARLET/
WHITE
408

WHITE/
BLACK
226



Back



P423

223780

223580



NEW

ALL-PRO PERFORMANCE FLEECE

| | | | |
|---------------|--------|-------|------------|
| 223580 | Adult | S-3XL | MSRP 44.00 |
| 223680 | Youth | S-XL | MSRP 43.00 |
| 223780 | Ladies | S-2XL | MSRP 44.00 |

- 6.78-ounce, 100% polyester melange fleece
- Ladies' fit on style 223780
- Scuba shaped neck on Adult
- 3-piece hood with contrast color lining (drawcord on Adult & Ladies only)
- Raglan sleeves
- Front pouch pocket with inner mesh cell phone or valuables pocket
- Self-fabric cuffs
- Open bottom



ATHLETIC GREY
HEATHER/
IRON
05W

BLACK
HEATHER/
SILVER
143

DARK GREEN
HEATHER/
SILVER
198

MAROON
HEATHER/
SILVER
181



NAVY
HEATHER/
SILVER
107

PURPLE
HEATHER/
SILVER
206

ROYAL
HEATHER/
SILVER
106

SCARLET
HEATHER/
SILVER
182



NEW

ALL-DAY CORE BASIC FLEECE HOODIE

| | | | |
|-------------|-------|-------|------------|
| 6955 | Adult | S-4XL | MSRP 24.00 |
| 6956 | Youth | S-XL | MSRP 23.00 |

- 6.8-ounce, 50% cotton/50% polyester
- Tear away label
- Hood with drawcord (on Adult only)
- Set-in sleeves
- Front pouch pocket
- Rib-knit cuffs and bottom band

COBALT BLUE
062MIDNIGHT BLUE
067JET BLACK
081CHEERY RED
085ONYX HEATH
146PLATINUM HEATHER
170ULTRA WHITE
803

NEW

ALL-DAY CORE BASIC FLEECE CREW

| | | | |
|-------------|-------|-------|------------|
| 6957 | Adult | S-4XL | MSRP 20.00 |
| 6958 | Youth | S-XL | MSRP 19.00 |

- 6.8-ounce, 50% cotton/50% polyester
- Tear away label
- Crew neck with stitching at neckline
- Set-in sleeves
- Rib-knit cuffs and bottom band

COBALT BLUE
062MIDNIGHT BLUE
067JET BLACK
081CHEERY RED
085ONYX HEATH
146PLATINUM HEATHER
170ULTRA WHITE
803

TO SEE MORE FROM THE ALL-DAY CORE BASICS COLLECTION, **SEE PAGE 96**



AUGUSTA
SPORTSWEAR.

ALL-DAY CORE BASIC COLLECTION | 31



223722



223522



MOMENTUM SHORTS

NEW

| | | | |
|---------------|--------|-------|------------|
| 223522 | Adult | S-3XL | MSRP 20.00 |
| 223622 | Youth | S-XL | MSRP 19.00 |
| 223722 | Ladies | S-2XL | MSRP 20.00 |

- Dry-Excel™ 100% polyester interlock smooth knit with color secure® technology that helps prevent dye migration
- Garment protects against the sun with 45+ UPF
- Ladies' fit on style 223722
- Tag-free label
- 2-inch brushed back elastic waistband with inside drawcord
- Side seam pockets
- Side vents
- 6-inch inseam
- 5-inch inseam on Ladies'
- Youth inseam graded



BLACK
080

GRAPHITE
059

NAVY
065



ROYAL
060

SCARLET
083

SILVER
059

222777

Hidden Side Pocket

222784



NEW

LADIES COOLCORE® SKORT

| | | | |
|---------------|--------|--------|------------|
| 222784 | Ladies | XS-2XL | MSRP 39.00 |
| 222884 | Girl | S-L | MSRP 38.00 |

- 88% polyester/12% elastane Coolcore® with color secure® technology that helps prevent dye migration
- Garment protects against the sun with 50+ UPF
- Tag-free label
- Wide flat waistband for secure fit and comfort
- Hidden possession pocket in waistband
- Phone pocket on upper right thigh
- Flatlock stitching provides comfort and helps prevent chafing


BLACK
080

IRON
980

NAVY
065

ROYAL
060

SCARLET
083

WHITE
005

Available in Ladies only


DARK GREEN
035

MAROON
745

PURPLE
747



Coolcore® is engineered to distribute moisture quickly throughout the garment. As the moisture spreads it dries faster to keep you cool and comfortable, and has UPF 50 sun protection

COOLCORE® COLLECTION



NEW

COOLCORE® SHORT SLEEVE HOODIE

222142 Adult XS-3XL MSRP 25.40

- 88% polyester/12% elastane Coolcore® with color secure® technology that helps prevent dye migration
- Garment protects against the sun with 50+ UPF
- Tag-free label
- 3 panel crossover hood
- Set-in sleeves with rolled forward shoulder seam



ATHLETIC GREY
009

BLACK
080

DARK GREEN
035

IRON
980

MAROON
745



NAVY
065

OLIVE
039

ROYAL
060

SCARLET
083

WHITE
005



222142



COOLCORE® ESSENTIAL TEE

| | | | |
|---------------|--------|--------|------------|
| 222136 | Adult | S-3XL | MSRP 17.80 |
| 222236 | Youth | S-XL | MSRP 16.80 |
| 222336 | Ladies | XS-2XL | MSRP 17.80 |

- 88% polyester/12% elastane Coolcore® with color secure® technology that helps prevent dye migration
- Garment protects against the sun with 50+ UPF
- Ladies' fit on style 222336
- Tagless label
- Set-in sleeves with rolled forward shoulder seam

ATHLETIC GREY
009BLACK
080COLUMBIA BLUE
089DARK GREEN
035IRON
980MAROON
745NAVY
065OLIVE
039PURPLE
747ROYAL
060SCARLET
083WHITE
005

COOLCORE® ESSENTIAL LONG SLEEVE TEE

| | | | |
|---------------|--------|--------|------------|
| 222138 | Adult | S-3XL | MSRP 21.50 |
| 222238 | Youth | S-XL | MSRP 20.50 |
| 222338 | Ladies | XS-2XL | MSRP 21.50 |

- 88% polyester/12% elastane Coolcore® with color secure® technology that helps prevent dye migration
- Garment protects against the sun with 50+ UPF
- Ladies' fit on style 222338
- Tagless label
- Set-in sleeves with rolled forward shoulder seam

ATHLETIC GREY
009COLUMBIA BLUE
089DARK GREEN
035MAROON
745OLIVE
039PURPLE
747WHITE
005

Available in Youth

BLACK
080IRON
980NAVY
065ROYAL
060SCARLET
083



404M

1509

6941

**NEW****DIAMOND GEAR BACKPACK****R01DWM** 13"W x 21"G x 7"D MSRP 58.00

- 600-denier polyester with PVC coating
- Matte PVC bottom for durability
- Zippered top pocket lined with brushed interior for valuables/ small devices
- Two front webbing loops for additional clips, securing safety gear
- Full length side bat sleeves (size to fit up to 2 5/8" bat)
- Inside zippered mesh pocket
- Collapsible shelf for glove
- Padded back for support and comfort
- Adjustable padded shoulder straps with adjustable sternum strap

**BLACK**
BLK**NAVY**
NAV**ROYAL**
ROY**STEALTH**
SHL**TRUE RED**
TRR



Ladies Fit



NEW PLAY90 COOLCORE® SHORTS

| | | | |
|---------------|--------|--------|------------|
| 325460 | Adult | S-3XL | MSRP 22.00 |
| 325461 | Youth | S-XL | MSRP 21.00 |
| 325462 | Ladies | XS-2XL | MSRP 22.00 |

- 88% polyester/12% elastane Coolcore® with color secure® technology that helps prevent dye migration
- Garment protects against the sun with 50+ UPF
- Tag-free label
- Covered elastic waistband with inside drawcord



BLACK 080 GRAPHITE 059 NAVY 065 ROYAL 060 SCARLET 083 WHITE 005



Heal/Toe Construction

Back



NEW IMPACT+ CHILL SOCCER SOCKS

| | | |
|---------------|---------------|------------|
| 329130 | Large (10-13) | MSRP 14.00 |
| | Medium (9-11) | |
| | Small (7-9) | |

- Made from Repreve® 93% recycled polyester/ 6% rubber/1% other fibers
- Soil-release properties
- Knee-length sock with fold-down cuff
- Extra cushioning and support in areas of the foot and ankle that are susceptible to rubbing, impact or injury
- Arch compression reduces fatigue and aids circulation
- Left and right sock construction for a better fit



BLACK/ GRAPHITE R17 DK GREEN/ BLACK 444 GRPHITE/ BLACK 172 MAROON/ BLACK 388 NAVY/ GRAPHITE S21 ROYAL/ BLACK 289 SCARLET/ BLACK 406 WHITE/ BLACK 226

MADRID



NEW

MADRID JERSEY

| | | | |
|---------------|-------|-------|------------|
| 322240 | Adult | S-2XL | MSRP 15.00 |
| 322241 | Youth | XXS-L | MSRP 14.00 |

- 100% polyester wicking knit with color secure® technology that helps prevent dye migration
- Tag-free label
- Low profile tapered collar
- Raglan sleeves



BLACK/WHITE 420 COLUMBIA BLUE/WHITE 293 DK GREEN/LIME 838 DK GREEN/WHITE 438 ELECTRIC YELLOW/BLACK 78N



LIME/WHITE 693 MAROON/POWER PINK 829 MAROON/WHITE 245 NAVY/POWER BLUE 888 ORANGE/WHITE 320



POWER BLUE/WHITE 834 POWER PINK/WHITE 468 PURPLE/WHITE 450 ROYAL/GOLD 281 ROYAL/WHITE 280



SCARLET/BLACK 406 SILVER/BLACK 098 TEAL/WHITE 331 VEGAS GOLD/WHITE 250 WHITE/BLACK 226



NEW

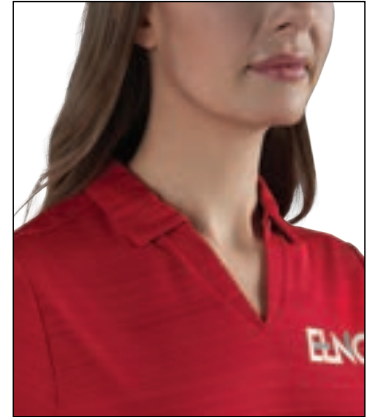
PRIMO 2.0 SHORTS

| | | | |
|---------------|-------|-------|------------|
| 325934 | Adult | S-2XL | MSRP 15.20 |
|---------------|-------|-------|------------|

- 100% polyester wicking knit
- 100% Coolmax™ lining on white
- Tag-free label
- Covered elastic waistband
- 6-inch inseam



BLACK 080 NAVY 065 ROYAL 060 SCARLET 083 WHITE 005



Johnny collar on Ladies'



NEW

PURSUIT POLO

| | | | |
|-------------|--------|-------|------------|
| 7001 | Adult | S-3XL | MSRP 28.00 |
| 7002 | Ladies | S-2XL | MSRP 28.00 |

- 100% polyester interlock textured knit with tonal stripe design
- Ladies' fit on style 7002
- Tag-free label
- Self-fabric collar with collar stay that helps maintain collar shape wash after wash
- Box-stitched placket
- Three button placket
- Self-fabric Johnny collar on Ladies'
- Set-in sleeves
- Side vents
- Contoured bottom with side vents on Ladies'



ATHLETIC GREY
009

BLACK
080

NAVY
065



ROYAL
060

SCARLET
083



NEW

VENTURA POLO

223554 Adult S-3XL MSRP 44.00

- Ventura Lightweight Suede knit 4.87-ounce
- Solids, 89% recycled polyester/11% spandex
- Heathers, 45% recycled polyester/44% polyester/11% spandex
- Tag-free label
- Self-fabric collar with collar stay that helps maintain collar shape wash after wash
- Mesh collar stand
- Box-stitched placket
- Two-button placket
- Set-in sleeves with rolled forward shoulder seam
- Side vents



BIRCH
907



BLACK
080



CHARCOAL HEATHER
083



GREY HEATHER
013



NAVY
065



RUSSELL[®]
ATHLETIC

RUSSELL[®]
ATHLETIC



coolcore[®]



Marbled
Leather



NEW

FREESTYLE SUBLIMATED
COOLCORE[®] BASELAYER TIGHT

| | | | |
|---------------|-------|-------|------------|
| R26CSM | Adult | S-2XL | MSRP 72.00 |
| R26CSW | Youth | S-XL | MSRP 71.00 |

- 89% polyester/11% elastane spandex knit with Coolcore[®] technology
- Ultra tight fit
- Tag-free label
- Branded soft brushed back exposed elastic waistband provides comfort



Gradient

Back

FreeStyle[™]
SUBLIMATION









**LEGEND HOODED
PULLOVER**
R20DSM Adult S-4XL



**LEGEND
POLO**
R20DKM Adult S-4XL



**LADIES LEGEND
POLO**
R20DKX Ladies S-3XL



**LEGEND STRETCH
WOVEN SHORTS**
R20SWM Adult S-6XL



**LEGEND
PANT**
R23SWM Adult XS-4XL



**LEGEND
CAP**
P304 Adult S/M, L/XL



**LEGEND TECH
FLEECE HOODIE**
R23TFM Adult S-4XL



**LEGEND SHORT SLEEVE
TECH FLEECE HOODIE**
R24TFM Adult S-4XL



CHILL FLEECE 2.0 COLLECTION





**CHILL FLEECE 2.0
FULL ZIP HOODIE**

6858 Adult S-3XL
6859 Youth XS-L



**LADIES CHILL FLEECE 2.0
FULL ZIP HOODIE**

6860 Ladies XS-2XL



**CHILL FLEECE 2.0
1/2 ZIP PULLOVER**

6855 Adult S-3XL
6856 Youth XS-L



**LADIES CHILL FLEECE 2.0
1/2 ZIP PULLOVER**

6857 Ladies XS-2XL



**CHILL FLEECE 2.0
HEADBAND**

6893 Adult One Size



**CHILL FLEECE
VEST 2.0**

6852 Adult S-3XL



**LADIES CHILL FLEECE
VEST 2.0**

6854 Ladies XS-2XL



REPREVE® ECO COLLECTION





Products are made with
100% post-consumer
recycled plastic bottles



**REPREVE®
ECO JACKET**
229516 Adult XS-3XL



**LADIES REPREVE®
ECO JACKET**
229716 Ladies XS-3XL



**REPREVE®
ECO VEST**
229513 Adult S-3XL



**LADIES REPREVE®
ECO VEST**
229713 Ladies XS-3XL



**REPREVE®
ECO HOODIE**
222577 Adult XS-3XL



**REPREVE®
ECO POLO**
222575 Adult XS-3XL



**LADIES REPREVE®
ECO POLO**
222775 Ladies XS-2XL



**REPREVE®
ECO CAP**
P203 Adult One Size



MICRO-LITE COLLECTION



**MICRO-LITE FLEECE
FULL-ZIP JACKET**
6861 Adult XS-3XL



**LADIES MICRO-LITE FLEECE
FULL-ZIP JACKET**
6862 Ladies XS-2XL



**MICRO-LITE FLEECE
1/4 ZIP PULLOVER**
6863 Adult XS-4XL



**LADIES MICRO-LITE FLEECE
1/4 ZIP PULLOVER**
6864 Ladies XS-3XL



RAIDER COLLECTION



**RAIDER
PULLOVER**
229155 Adult XS-4XL



**RAIDER PULLOVER
SHORT SLEEVE**
229545 Adult S-4XL



**RAIDER SOFT SHELL
JACKET**
229157 Adult S-4XL



**LADIES RAIDER SOFT
SHELL JACKET**
229357 Ladies XS-3XL



PRISM COLLECTION





PRISM BOLD
1/4 ZIP PULLOVER
222591 Adult S-3XL



LADIES PRISM BOLD
1/4 ZIP PULLOVER
222791 Ladies XS-2XL



PRISM BOLD
POLO
222576 Adult S-5XL



LADIES PRISM BOLD
POLO
222776 Ladies XS-3XL



PRISM
POLO
222568 Adult S-4XL



LADIES PRISM
POLO
222768 Ladies XS-3XL



SERIESX COLLECTION





**SERIESX
FULL-ZIP JACKET**
223558 Adult S-3XL
223658 Youth S-XL



**LADIES SERIESX
FULL-ZIP JACKET**
223758 Ladies XS-2XL



**SERIESX
HOODED JACKET**
229528 Adult S-3XL
229628 Youth S-XL



**LADIES SERIESX
HOODED JACKET**
229728 Ladies XS-2XL



**SERIESX
PULLOVER**
229533 Adult S-4XL
229633 Youth S-XL



**LADIES SERIESX
PULLOVER**
229733 Ladies XS-2XL



**SERIESX
PANT**
229531 Adult S-3XL
229631 Youth S-XL



**LADIES SERIESX
PANT**
229731 Ladies XS-2XL



ALL-AMERICAN LEAGUE COLLECTION





**LADIES ALL-AMERICAN
FUNNEL NECK PULLOVER**
229763 Ladies XS-2XL



**ALL-AMERICAN
PULLOVER**
229565 Adult XS-3XL



**LADIES ALL-AMERICAN
FUNNEL CREW**
223490 Ladies XS-2XL



**ALL-AMERICAN
TEAM HOODIE**
222581 Adult S-3XL
222681 Youth S-XL



**ALL-AMERICAN
HOODIE**
229563 Adult XS-3XL



THREE-SEASON FLEECE COLLECTION





**THREE-SEASON FLEECE
PULLOVER HOODIE**

6865 Adult S-4XL
6866 Youth S-XL



**LADIES THREE-SEASON
FLEECE PULLOVER HOODIE**

6867 Ladies XS-2XL



**THREE-SEASON
JOGGER**

6868 Adult S-4XL
6869 Youth S-XL



**THREE-SEASON FLEECE
FULL ZIP HOODIE**

6899 Adult S-4XL
6900 Youth S-XL



**LADIES THREE-SEASON
FLEECE FULL ZIP HOODIE**

6901 Ladies XS-2XL



**LADIES THREE-SEASON
JOGGER**

6870 Ladies XS-2XL



ALL-DAY CORE BASICS COLLECTION





**ALL-DAY CORE BASIC
50/50 TEE**

6950 Adult S-5XL
6951 Youth XS-XL



**ALL-DAY CORE BASIC
FLEECE HOODIE**

6955 Adult S-4XL
6956 Youth S-XL



**ALL-DAY CORE BASIC
FLEECE CREW**

6957 Adult S-4XL
6958 Youth S-XL



**ALL-DAY CORE BASIC
TRI-BLEND TEE**

6959 Adult S-4XL
6960 Youth S-L



**LADIES ALL-DAY
CORE BASIC
TRI-BLEND TEE**

6961 Ladies XS-3XL



GAMEDAY VINTAGE COLLECTION





**GAMEDAY VINTAGE
RINGER TEE**

6876 Adult S-4XL
6877 Youth S-XL



**LADIES GAMEDAY
VINTAGE RINGER TEE**

6878 Ladies S-3XL



**GAMEDAY VINTAGE
LONG SLEEVE TEE**

6881 Adult S-4XL
6882 Youth S-XL



**LADIES GAMEDAY
VINTAGE LONG SLEEVE TEE**

6883 Ladies S-3XL



**GAMEDAY VINTAGE
3/4 TEE**

6879 Adult S-4XL
6880 Youth S-XL



**GAMEDAY VINTAGE
HOODIE**

6884 Adult XS-3XL



**LADIES GAMEDAY
VINTAGE HOODIE**

6902 Ladies XS-3XL



MONTEREY COLLECTION





**MONTEREY
HOODIE**
222745 Adult XS-3XL



**LADIES MONTEREY
HOODIE**
222845 Ladies XS-2XL



**LADIES MONTEREY
TEE**
223245 Ladies S-2XL
223345 Girls S-L



**LADIES MONTEREY
LONG SLEEVE TEE**
223246 Ladies S-2XL
223346 Girls S-L



VENTURA COLLECTION





**VENTURA SOFT
KNIT HOODIE**

222598 Adult S-3XL
222698 Youth S-XL



**LADIES VENTURA
SOFT KNIT HOODIE**

222798 Ladies XS-2XL



**LADIES VENTURA
CARDIGAN**

223705 Ladies XS-2XL



**VENTURA SOFT
KNIT CREW**

223503 Adult S-3XL



**VENTURA SOFT KNIT
SHORT SLEEVE HOODIE**

222505 Adult S-3XL
222605 Youth S-XL



**VENTURA 1/4 ZIP
PULLOVER**

223553 Adult S-3XL



**LADIES VENTURA 1/4 ZIP
PULLOVER**

223753 Ladies XS-2XL



**VENTURA
POLO**

223554 Adult S-3XL



**VENTURA SOFT
KNIT JOGGER**

222599 Adult S-3XL
223699 Youth S-XL



**LADIES VENTURA SOFT
KNIT JOGGER**

222799 Ladies XS-2XL



**VENTURA SOFT
KNIT SHORTS**

223504 Adult S-3XL
223604 Youth S-XL



**LADIES VENTURA SOFT
KNIT SHORTS**

223704 Ladies XS-2XL



SHADOW TONAL HEATHER COLLECTION





**SHADOW TONAL HEATHER
TRAINING TEE**
2900 Adult S-3XL
2901 Youth S-L



**LADIES SHADOW TONAL
HEATHER TRAINING TEE**
2902 Ladies XS-2XL



**SHADOW TONAL HEATHER
1/4 ZIP PULLOVER**
2908 Adult S-3XL



**LADIES SHADOW TONAL
HEATHER 1/4 ZIP PULLOVER**
2909 Ladies XS-2XL



**SHADOW TONAL HEATHER
LONG SLEEVE TEE**
2903 Adult S-3XL



**SHADOW TONAL
HEATHER POLO**
5412 Adult S-3XL



**LADIES SHADOW TONAL
HEATHER POLO**
5413 Ladies S-2XL



ELECTRIFY COOLCORE® COLLECTION





Coolcore® is engineered to distribute moisture quickly throughout the garment.

As the moisture spreads it dries faster to keep you cool and comfortable, and has UPF 50 sun protection



**ELECTRIFY
COOLCORE® TEE**
222571 Adult S-3XL
222671 Youth S-XL



**LADIES ELECTRIFY
COOLCORE®
TEE**
222771 Ladies XS-2XL



**ELECTRIFY
COOLCORE® HOODIE**
222589 Adult S-3XL
222689 Youth S-XL



**ELECTRIFY COOLCORE®
LONG SLEEVE TEE**
222570 Adult S-3XL
222670 Youth S-XL



**LADIES ELECTRIFY
COOLCORE® LONG
SLEEVE TEE**
222770 Ladies XS-2XL



**ELECTRIFY COOLCORE®
1/2 ZIP PULLOVER**
222574 Adult S-3XL



**LADIES ELECTRIFY
COOLCORE® 1/2 ZIP
PULLOVER**
222774 Ladies XS-3XL



**ELECTRIFY COOLCORE®
POLO**
222572 Adult S-XL



**LADIES ELECTRIFY
COOLCORE®
POLO**
222772 Ladies XS-3XL



COOLCORE® COLLECTION





Coolcore® is engineered to distribute moisture quickly throughout the garment.

As the moisture spreads it dries faster to keep you cool and comfortable, and has UPF 50 sun protection



**COOLCORE®
ESSENTIAL TEE**

222136 Adult S-3XL
222236 Youth S-XL
222336 Ladies XS-2XL



**COOLCORE®
ESSENTIAL LONG
SLEEVE TEE**

222138 Adult S-3XL
222238 Youth S-XL
222338 Ladies XS-2XL



**COOLCORE®
1/4 ZIP PULLOVER**

222140 Adult S-3XL
222240 Youth S-XL
222340 Ladies XS-2XL



**COOLCORE®
SHORT SLEEVE
HOODIE**

222142 Adult XS-3XL



**COOLCORE®
PERFORMANCE
POLO**

222518 Adult S-4XL
222701 Ladies XS-3XL



**ELECTRIFY
COOLCORE®
POLO**

222572 Adult S-4XL



**COOLCORE®
SLEEVELESS HOODIE**

222590 Adult XS-3XL



**COOLCORE®
TANK**

222593 Adult S-3XL
222777 Ladies XS-2XL
222777 Girls S-L



**COOLCORE®
SHORTS**

222594 Adult S-3XL



**LADIES COOLCORE®
7/8 TIGHT**

222702 Ladies XS-2XL
222801 Girls S-L



**LADIES COOLCORE®
SKORT**

222784 Ladies XS-2XL
222884 Girls S-L



MOMENTUM TEAM COLLECTION



MOMENTUM TEAM



**MOMENTUM TEAM
1/4 ZIP PULLOVER**
223500 Adult S-4XL
223600 Youth S-XL



**LADIES MOMENTUM TEAM
1/4 ZIP PULLOVER**
223700 Ladies S-3XL



**MOMENTUM TEAM
CAP**
P820 Adult/Youth



**MOMENTUM TEAM
TEE**
223501 Adult S-6XL
223601 Youth XXS-XL



**LADIES MOMENTUM
TEAM TEE**
223701 Ladies S-3XL



**MOMENTUM TEAM
HOODIE**
222540 Adult S-4XL
222640 Youth S-XL



**LADIES MOMENTUM
TEAM FLEECE HOODIE**
222740 Ladies XS-2XL



**MOMENTUM TEAM
LONG SLEEVE TEE**
223502 Adult S-4XL
223602 Youth S-XL



**LADIES MOMENTUM TEAM
LONG SLEEVE TEE**
223702 Ladies S-3XL



**MOMENTUM TEAM
FLEECE CREW**
223525 Adult S-4XL



**LADIES MOMENTUM TEAM
FLEECE CREW**
223725 Ladies XS-2XL



MOMENTUM COLLECTION



MOMENTUM

Our softest tees yet, available
in extended sizes in Adult,
Youth, Ladies & Girls



**MOMENTUM
TEE**
222818 Adult S-6XL
222819 Youth XXS-XL



**LADIES MOMENTUM
TEE**
222820 Ladies S-3XL



**MOMENTUM
LONG SLEEVE TEE**
222822 Adult S-4XL
222823 Youth S-XL



**LADIES MOMENTUM
LONG SLEEVE TEE**
222824 Ladies S-3XL



**MOMENTUM
HOODIE**
222830 Adult S-4XL
222831 Youth S-XL



**MOSSY OAK®
MOMENTUM HOODIE**
223515 Adult S-4XL



**MOSSY OAK®
MOMENTUM LONG
SLEEVE TEE**
222836 Adult S-4XL



**LADIES MOSSY OAK®
MOMENTUM LONG
SLEEVE TEE**
222838 Ladies S-3XL



**MOMENTUM
SHORTS**
223522 Adult S-3XL
223622 Youth S-XL



**LADIES MOMENTUM
SHORTS**
223722 Ladies S-3XL



ATTAIN COLLECTION





**ATTAIN WICKING RAGLAN
SLEEVE TEE**

2790 Adult S-6XL
2791 Youth XXS-XL



**LADIES ATTAIN WICKING
RAGLAN SLEEVE TEE**

2792 Ladies XS-3XL
2793 Girls S-L



**ATTAIN WICKING
SHORTS**

2780 Adult S-3XL
2781 Youth XS-L



**ATTAIN WICKING
TWO-BUTTON JERSEY**

1565 Adult S-5XL
1566 Youth XS-XL



**LADIES ATTAIN WICKING
TWO-BUTTON JERSEY**

1567 Ladies XS-3XL



**LADIES ATTAIN WICKING
SLEEVELESS JERSEY**

4794 Ladies S-2XL
4795 Girls XS-L



**ATTAIN WICKING
1/4 ZIP PULLOVER**

2785 Adult S-5XL
2786 Youth S-XL



**LADIES ATTAIN WICKING
1/4 ZIP PULLOVER**

2787 Ladies XS-3XL



**ATTAIN WICKING
LONG SLEEVE TEE**

2795 Adult S-4XL
2796 Youth S-L



**LADIES ATTAIN WICKING
LONG SLEEVE TEE**

2797 Ladies XS-3XL





**CUTTER+ HENLEY
BASEBALL JERSEY**

6905 Adult S-3XL

6906 Youth S-XL



**LADIES CUTTER+ HENLEY
SOFTBALL JERSEY**

6917 Ladies XS-2XL

6918 Girls S-XL



**CUTTER+ V-NECK
JERSEY**

6907 Adult S-3XL

6908 Youth S-XL



**LADIES CUTTER+
V-NECK JERSEY**

6915 Ladies XS-2XL

6916 Girls S-L



**CUTTER+ FULL BUTTON
BASEBALL JERSEY**

6909 Adult S-3XL

6910 Youth S-XL



**LADIES CUTTER+
SLEEVELESS SOFTBALL
JERSEY**

6913 Ladies XS-2XL

6914 Girls S-XL



**LADIES CUTTER+
FULL BUTTON
SOFTBALL JERSEY**

6919 Ladies XS-2XL

6920 Girls S-L



**CUTTER
JERSEY**

1517 Adult S-3XL

1518 Youth XXS-XL



**LADIES CUTTER
JERSEY**

1522 Ladies S-2XL

1523 Girls S-L

ECO-REVIVE COLLECTION



**THREE-SEASON FLEECE
PULLOVER HOODIE**

6865 Adult S-4XL
6866 Youth S-XL
6867 Ladies XS-2XL



**THREE-SEASON FLEECE
FULL ZIP JACKET**

6899 Adult S-4XL
6900 Youth S-XL
6901 Ladies XS-2XL



**THREE-SEASON
JOGGER**

6868 Adult S-4XL
6869 Youth S-XL
6870 Ladies XS-2XL



**ECO-REVIVE
TRI-BLEND TEE**

223517 Adult S-3XL
223617 Youth S-XL
223717 Ladies XS-2XL



**CHILL FLEECE
VEST 2.0**

6852 Adult S-3XL
6854 Ladies XS-2XL



**CHILL FLEECE 2.0
FULL ZIP HOODIE**

6858 Adult S-3XL
6859 Youth XS-L
6860 Ladies XS-2XL



**MICRO-LITE FLEECE
FULL-ZIP JACKET**

6861 Adult XS-3XL
6862 Ladies XS-2XL



**MICRO-LITE FLEECE
1/4 ZIP PULLOVER**

6863 Adult XS-4XL
6864 Ladies XS-3XL



**VENTURA SOFT
KNIT CREW**

223503 Adult S-3XL



**VENTURA SOFT
KNIT HOODIE**

222598 Adult S-3XL
222698 Youth S-XL



**LADIES VENTURA
SOFT KNIT HOODIE**

222798 Ladies XS-2XL



**VENTURA SOFT KNIT
SHORT SLEEVE HOODIE**

222505 Adult S-3XL
222605 Youth S-XL



**LADIES VENTURA
CARDIGAN**

223705 Ladies XS-2XL



**VENTURA SOFT
KNIT JOGGER**

222599 Adult S-3XL
223699 Youth S-XL
222799 Ladies XS-2XL



**VENTURA SOFT
KNIT SHORTS**

223504 Adult S-3XL
223604 Youth S-XL



**LADIES VENTURA SOFT
KNIT SHORTS**

223704 Ladies XS-2XL



**ALPINE SWEATER
FLEECE 1/4 ZIP
PULLOVER**

223540 Adult S-3XL
223740 Ladies XS-2XL



**ECO TRUCKER
SNAPBACK**

P113 Adult One size



**MONTEREY
HOODIE**

222745 Adult XS-3XL



**LADIES MONTEREY
HOODIE**

222845 Ladies XS-2XL



**LADIES MONTEREY
TEE**

223245 Ladies S-2XL
223345 Girls S-L



**LADIES MONTEREY
LONG SLEEVE TEE**

223246 Ladies S-2XL
223346 Girls S-L



**ECO REVIVE
BEANIE**

P605K Adult One size



PURSUIT COLLECTION



**PURSUIT
POLO**

7001 Adult S-3XL MSRP 28.00



**LADIES PURSUIT
POLO**

7002 Ladies S-2XL MSRP 28.00



**PURSUIT 1/2 ZIP
PULLOVER**

7011 Adult S-4XL MSRP 30.00



**LADIES PURSUIT 1/2 ZIP
PULLOVER**

7012 Ladies S-3XL MSRP 30.00



ALPINE COLLECTION

ecoREVIVE[®]
SUSTAINABLE FABRIC TECHNOLOGY

2024 NEW PRODUCTS | KEY COLLECTIONS



**ALPINE SWEATER FLEECE
1/4 ZIP PULLOVER**
223540 Adult S-3XL



**LADIES ALPINE SWEATER
FLEECE 1/4 ZIP PULLOVER**
223740 Ladies XS-2XL



**ALPINE SWEATER
FLEECE VEST**
223542 Adult S-3XL MSRP 56.00



**LADIES ALPINE SWEATER
FLEECE VEST**
223742 Ladies XS-2XL MSRP 56.00