



Essential? Yes. Basic? Definitely not. The cotton blend jersey with a softly brushed finish makes a difference. With a scoop neck and racerback, there's no limit to how you can wear this solid tank top. Pair with shorts. Layer under a deep V sweater. Dress it up with a blazer. Get creative. Stay classic. Just make sure you have plenty of colors on hand.

BW2502 *Essential Racerback Tank*

- 4.3 oz., 80% polyester, 20% cotton
- self binding at neck and armhole
- shirttail hem

Sizes: Women's XS - 2XL

MSRP \$18.85



Black
BLK



Brick Red
650



Daffodil
743



Granite
GNT



Mandarin
815



Maroon
MAR



Navy
NAV



Pacific Blue
460



Paradise
643



Purple
505



Shamrock
320



Sky Blue
490



True Red
660



True Royal
425



White
WHT



Wisteria
565





Put a new twist on your next workout with our Twisted Back Tank. The poly-cotton brushed jersey fabric is breathable, soft and moves easily with you. Features racerback styling with a single twist and a shirttail hem for added freedom and comfort.

BW2505 *Women's Twistback Tank*

- 4.28 oz., 80% polyester, 20% cotton
- self binding finishing armhole & neck opening
- racerback detailing with single twist
- machine wash cold; tumble dry low
- shirttail hem

Sizes: Women's XXS - 2XL

MSRP \$24.85



Black
001



Cyber Lime
385



Mandarin
815



Navy
400



Pacific Blue
460



Paradise
643



True Red
660



True Royal
425



Wisteria
565





With the Knot Front Tank, you can dare to be a bit different with your tank game. The soft poly-cotton brushed jersey fabric design has a scoop neckline and off-center knot front twist. It keeps you comfortably cool, with a look that is completely cute!

BW2507 Knot Front Tee

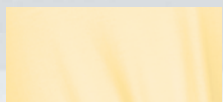
- 4.28 oz., 80% polyester, 20% cotton brushed jersey
- self binding finishing armhole & neck opening
- off-center knot front twist
- scoop neckline

Sizes: Women's XXS - 2XL

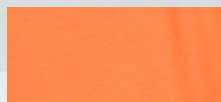
MSRP \$26.85



Black
001



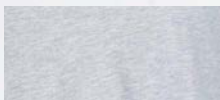
Daffodil
743



Mandarin
815



Navy
400



Oxford Heather
078



Pacific Blue
460



Paradise
643



True Red
660



White
100



Wisteria
565



NEW



This tank looks and feels so soft, you'll want to wear it to work out, hang out or chill out. The loose fit style with a smidge of stretch make it a perfect fit. With a super-flattering racerback design, a satin scoop neckline and a hi/low hem, it's sure to become a favorite for every casual endeavor.

BW2508 *Bamboo Hi/Low Tank*

- 5.8 oz., 96% bamboo, 4% spandex
- stretch satin scoop neckline and armholes
- luxurious soft feel and look
- hi/low hem
- racerback

Sizes: Women's XXS - 2XL

MSRP \$22.85



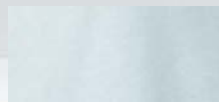
Black
001



Navy
400



Oxford Heather
078



Sky Blue
490





You'll love the luxuriously soft feel and look of this bamboo tee shirt. The loose fit style is perfected with just the right amount of stretch. A satin neck trim on the scoop neckline and a hi/low hem take it from basic to basically every day!

BW2105 *Bamboo Hi/Low Tee*

- 5.8 oz., 96% bamboo, 4% spandex
- stretch satin neck trim
- scoop neckline
- luxurious soft feel and look
- hi/low hem

Sizes: Women's XXS - 2XL

MSRP \$26.85



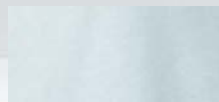
Black
001



Navy
400



Oxford Heather
078



Sky Blue
490





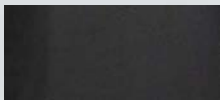
Add a pure cotton V-Neck Tee to your collection to mix things up while keeping comfort at the forefront. Simply designed with side-seam construction for a more tailored and flattering silhouette that will pair well with jeans, shorts or anything. The self-fabric back neck tape adds durability.

BW2201 *Women's V-Neck Tee*

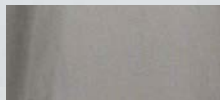
- 4.5 oz., 100% cotton
- ribbed V-neck collar
- self-fabric back neck tape

Sizes: XS - 3XL

MSRP \$18.85



Black
BLK



Granite
GNT



Natural Heather
NAH



Navy
NAV



Oxford Heather
OXH



Purple
PRP



Red
RED



Royal
ROY



White
WHT





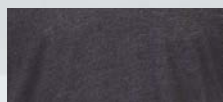
A must-have for your wardrobe, this Tri-Blend Crew is anything but basic. With its soft and stretchy poly, cotton and rayon blend, it will be a tee that you'll wear with everything. The self-fabric neck tape and folded neck opening ensure that it will hold its shape over time.

BW2101 *Women's Tri-blend Tee*

- 4.3 oz., 50% polyester, 38% cotton, 12% rayon
- folded self neck opening
- self-fabric neck tape

Sizes: Women's XXS - 2XL

MSRP \$18.85



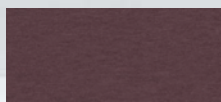
Charcoal Heather
CHH



Hunter Heather
HUH



Mint Heather
MNH



Maroon Heather
MRH



Navy Heather
NVH



Oxford Heather
OXH



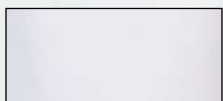
Pink Heather
PKH



Purple Heather
PUH



Royal Heather
RYH



White
WHT





Essential in every sense of the word, the Essential Crewneck Tee will prove itself wear after wear. Double-brushed cotton-poly jersey is so soft to the touch. The folded, self-fabric neck band ensures that it will hold its shape over time. Turnbacks at the sleeve and bottom openings offer a bit more polish to the everyday casual style.

BW2104 *Women's Essential Crew Tee*

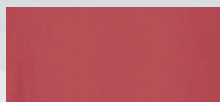
- 4.28 oz., 50% cotton, 50% polyester
- double brushed jersey
- folded neck band
- turnback at bottom opening and sleeve opening

Sizes: Women's XXS - 2XL

MSRP \$18.85



Black
001



Brick Red
650



Charcoal Heather
091



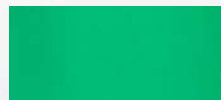
Mandarin
815



Navy
400



Oxford Heather
078



Shamrock
320



True Red
660



True Royal
425



White
100

NEW





Cute, casual, and oh-so comfy, our Carefree Tee will be one you reach for when working out or simply hanging out. Soft cotton-poly double brushed jersey has a relaxed fit that's extremely versatile. Lapped shoulder seams and a keyhole back opening add athletic appeal. Turnbacks at the sleeve and bottom openings add an extra degree of polish to the tee.

BW2404 Women's Carefree Tee

- 4.28 oz., 50% cotton, 50% polyester double brushed jersey
- lapped shoulder seam
- keyhole back opening
- turnback at bottom opening and sleeve opening

Sizes: Women's XXS - 2XL

MSRP \$26.85



Black
001



Brick Red/Oxford
965



Mandarin
815



Oxford Heather
078



Pacific Blue
460



True Royal
425



True Red
660



Paradise
643



Navy/White
904



White/Oxford Htr
903





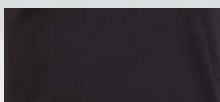
Coming or going, the Bella Crossback Tee provides ultimate comfort - along with fun crossover back detailing. Soft and durable brushed cotton-poly blend fabric is designed with a ribbed neckline and turnback detailing at the sleeves and bottom openings.

BW2405 *Bella Crossback Tee*

- 4.28 oz., 50% cotton, 50% polyester
- brushed jersey
- crossover back detailing
- keyhole back opening
- turnback at bottom opening and sleeve opening

Sizes: Women's XXS - 2XL

MSRP \$28.85



Black
001



Mandarin
815



Navy
400



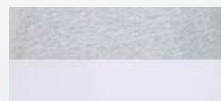
Oxford Heather
078



Pacific Blue
460



Paradise
643



White/Oxford Htr
903



Wisteria
565





Leave them doing a double take as you walk by. It's fun to do in our Cut It Out Tee. The racerback with cutaway detail is slyly flattering, offset by a slightly scooped neck, short sleeves and shirttail hem. Made of a super soft cotton and poly slub jersey, there's no denying how enjoyable it is to give "back" the attention you deserve.

T67 *Cut It Out Tee*

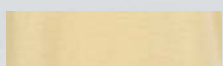
- 4.3 oz., 60% cotton, 40% poly slub jersey
- super soft and flattering
- racerback with cutaway detail

Sizes: Women's XXS - 2XL

MSRP \$26.85



Black
BLK



Daffodil
743



Garnet
GAR



Mandarin
815



Navy
NAV



Olive
OLV



Pacific Blue
460



Paradise
643



Purple
PRP



Red
RED



Royal
ROY



Sage
SAG



Terracotta
TER



White
WHT



Wisteria
565





As the name says, this is one Sweet Tee! Soft, textured slub jersey is ultra comfy and the tee is finished with charming details like double-rolled sleeve cuffs, a turnback at the bottom opening and a pleated back yoke panel. The tee has a loose fit, a curved hem on the front and straight hem on back, along with 3" side vents, make it an ideal choice for wearing out over jeans or leggings.

BW2102 *Women's Sweet Tee*

- 4.13 oz., 60% cotton, 40% polyester
- slub jersey • 3" side vents • pleated back yoke panel
- turnback at bottom opening and sleeve opening
- curved hem on front body; straight hem on back body

Sizes: Women's XXS - 2XL

MSRP \$26.85



Black
001



Daffodil
743



Mandarin
815



Navy
400



Oxford Heather
078



Pacific Blue
460



Paradise
643



True Red
660



True Royal
425



White
100



Wisteria
565





Dare to be a bit different with the flowing style of our Willow Tee. Cotton-poly construction is comfortable in any setting, and the ruffle-layered hem makes this shirt more feminine and flirty than your average tee.

BW2401 *Willow Tee*

- 4.1 oz., 60% cotton, 40% polyester
- back neck tape
- ruffle-layered bottom

Sizes: Women's XXS - 2XL

MSRP \$26.85



Black
BLK



Daffodil
743



Garnet
GAR



Indigo
IND



Mandarin
815



Olive
OLV



Orchid
ORC



Oxford Heather
OXH



Pacific Blue
460



Paradise
643



Purple
PRP



Red
RED



Royal
ROY



Wisteria
565





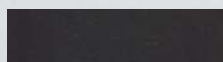
Show off your sporty side while keeping it completely cute and comfortable! This solid color tee is made of a super soft cotton and poly slub jersey, with contrasting stitching at the seams and elbow patches for a fun look. Ribbed neck and cuffs holds their shape wherever you day takes you.

BW3166 *Solid Preppy Patch Tee*

- 4.3 oz., 60% cotton, 40% poly slub jersey
- 1x1 ribbed neck and cuffs
- self-fabric back neck tape

Sizes: Women's XXS - 2XL

MSRP \$28.85



Black
BLK



Indigo
IND



Garnet
GAR



Granite
GNT



Mandarin
815



Navy
NAV



Olive
OLV



Oxford Heather
OXH



Pacific Blue
460



Paradise
643



Red
RED



Royal
ROY



White
WHT



Wisteria
565





Give a loud cheer for your new favorite jersey. With double stripes on sleeves for athletic style, and a roomy, oversized fit for extra comfort, this all-cotton jersey is a winning look, layered or not. Rib knit at cuffs and crewneck. Lift up your team spirit in our long-sleeve Pom Pom Jersey.

BW3514 *Pom Pom Jersey*

- 5.5 oz., 100% cotton ringspun jersey
- relaxed, oversize fit; double athletic sleeve stripes

Sizes: Ladies XS - 2XL

MSRP \$36.85

	 Black 001	 Black/Oxford Htr BOX	 Charcoal 090
 Collegiate Blue 458	 Coll. Blue/Black CBL	 Daffodil 743	 Denim 418
 Grape 508	 Grape/Oxford GPX	 Latte 280	 Mandarin 815
 Natural 103	 Navy 400	 Navy/Oxford Htr NOX	 Oxford Heather 078
 Paradise 643	 Purple 505	 Red 660	 Red/Black RBL
 Royal 425	 Sky Blue 490	 White 100	 Wisteria 565





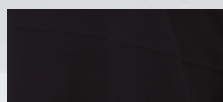
Give a loud cheer for your new favorite jersey. With double stripes on sleeves for athletic style, and a roomy, oversized fit for extra comfort, this all-cotton jersey is a winning look, layered or not. Rib knit at cuffs and crewneck. Lift up your team spirit in our long-sleeve Pom Pom Jersey.

BW3515 *Cropped Retro Jersey*

- 5.5 oz., 100% cotton ringspun jersey
- oxford is 90% cotton, 10% poly; charcoal is 60% cotton, 40% poly
- relaxed, oversize fit
- double athletic sleeve stripes

Sizes: Women's XS - XL

MSRP \$34.85



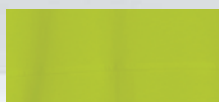
Black
001



Black/Oxford Htr
BOX



Brick Red
650



Cyber Lime
385



Denim
418



Mandarin
815



Navy/Oxford Htr
NOX



Oxford Heather
078



Paradise
643



Shamrock
320



White
100



Wisteria
565





Designed with workouts in mind, the Adrienne Tank helps you keep your cool while working up a sweat. The cotton-spandex fabric is breathable, with enough stretch to move with you. Features racerback styling and a shirttail hem for maximum comfort however you choose to move.

BW2501 *Adrienne Tank*

- 5.9 oz., 96% cotton, 4% spandex
- racerback detail
- shirttail hem

Sizes: Women's XXS - 2XL

MSRP \$22.85



Black
BLK



Cyber Lime
385



Mandarin
815



Navy
NAV



Oxford Heather
OXH



Olive
OLV



Pacific Blue
460



Paradise
643



Purple
PRP



Red
RED



Shamrock
320



Sky Blue
490



True Royal
425



White
WHT





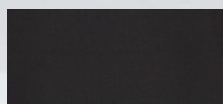
Feminine and flirty, the Baby Rib Top offers cool cotton comfort with just a hint of stretch. Enjoy a contemporary, slightly smaller shirt length with a square neck, lettuce-edge sleeve and hem. An undeniably adorable style that will add flare to any casual look.

BW2403 *Baby Rib Top*

- 5.9 oz., 96% cotton, 4% spandex
- square neckline
- lettuce edge sleeve and bottom opening

Sizes: Women's XXS - 2XL

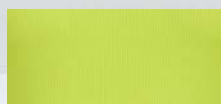
MSRP \$26.85



Black
BLK



Blush
BLS



Cyber Lime
385



Mandarin
815



Navy
NAV



Oxford Heather
OXH



Pacific Blue
460



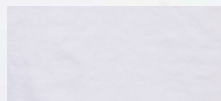
Paradise
643



Red
RED



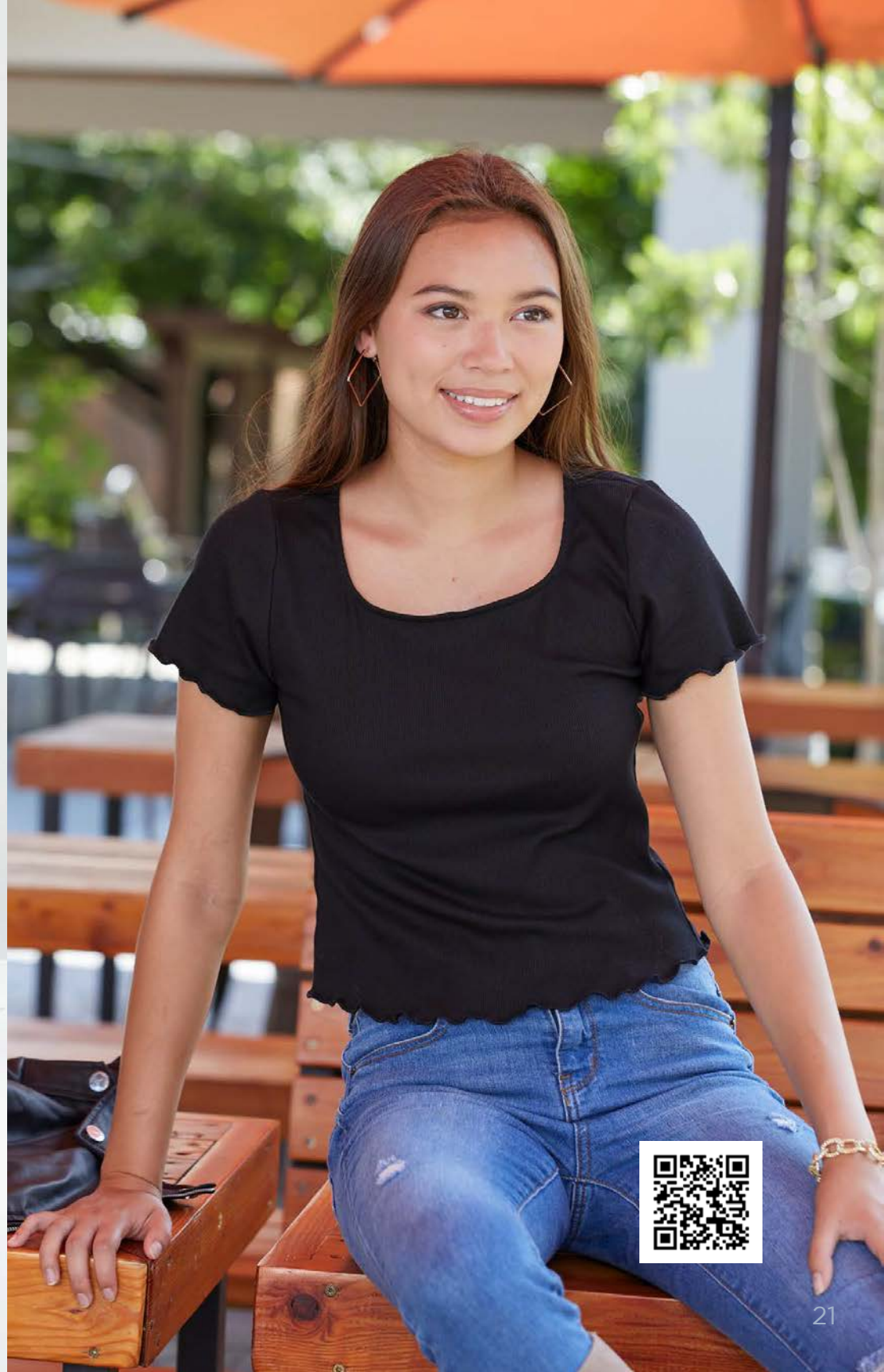
True Royal
425



White
WHT



Wisteria
565





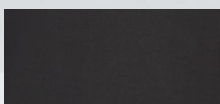
With the Harper Henley, we've taken a classic style and updated it with feminine appeal. Pure cotton softness has a shot of spandex for stretchable, easy comfort. Twill back neck tape and twill tape on the placket are a casual accent, while antique silver snaps are just the thing to set this shirt apart.

BW2402 *Harper Henley*

- 5.9 oz., 96% cotton, 4% spandex
- twill back neck tape and twill tape placket
- antique silver snaps

Sizes: Women's XXS - 2XL

MSRP \$34.85



Black
BLK



Mandarin
815



Navy
NAV



Olive
OLV



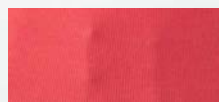
Orchid
ORC



Oxford Heather
OXH



Pacific Blue
460



Paradise
643



Red
RED



True Royal
425



White
WHT



Wisteria
565





Running, walking or strength training, they're all better when wearing our Basic Sport Short. This poly short has a white mesh side panel, with bindings that match the body color, and a mesh liner and coin pocket.

BW6102 Women's Sport Short

- 2.4 oz., 100% poly
- white mesh side panel, liner and coin pocket
- scallop-shaped leg opening

Sizes: Women's XXS - 2XL

MSRP \$24.85



Black/White
BKW



Grey/White
GYW



Hunter/White
HUW



Mandarin/White
815



Navy/White
NVW



Paradise/White
643



Purple/White
PRW



Red/White
RDW



Royal/White
ROW





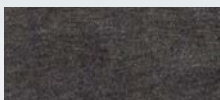
It's time to Rally. We're talking about a spirited fleece short with lived-in softness from day one. With a special enzyme and stone wash process, our essential solid short rivals any vintage look. The wide elasticized waist won't bind or twist, and it adjusts to fit just right with a 3/8" natural colored rope cord. The side pockets always come in handy. Go on, team up the Rally Short with your favorite tee for a winning look every time.

K11 Rally Short

- 6.5 oz., 60% cotton, 40% poly fleece
- stone washed for a vintage feel
- adjust the fit with a 3/8" rope cord

Sizes: Women's XS - 2XL
Youth YS - YL

MSRP \$26.85 - Women's
\$22.85 - Youth



Charcoal
CHA



Navy
NAV



Oxford
OXF





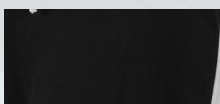
On the track. At the beach. Close to home. You name it. You'll always want the Relay Short at the ready. In skin-sational French terry with a full elastic waist, contrast twill drawcord and jersey trim, this pair is made to be your go-to active shorts.

R65 *Relay Short*

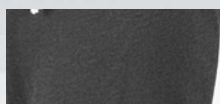
- 8.3 oz., 70% cotton, 30% poly French terry
- 2-1/2" inseam on size small, 2-3/4" on medium
- elastic waist with drawcord

Sizes: Women's XS - 2XL

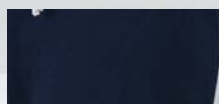
MSRP \$26.85



Black/White Trim
BKW



Granite/White Trim
GNW



Navy/White Trim
NVW



Red/White Trim
RDW





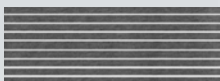
Whether it's a movie night in or a quick weekend errand, the Evelyn Wide Leg is made for everyday casual and sure to be an instant favorite. Soft poly, rayon and cotton blend fabric is oh-so soft and has a shirred waistband with ruffle header and forward side seam for an ultra-feminine look. Side-seam pockets have self pocket bags.

BW6615 *Evelyn Pant*

- 4.3 oz., 60% poly, 28% rayon, 12% cotton
- shirred waistband with ruffle header and forward side seam
- side-seam pockets with self pocket bags

Sizes: Women's XS - 2XL

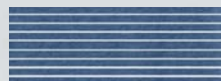
MSRP \$36.85



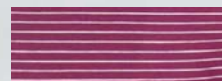
Black Heather
Oxford Stripe
BOX



Blush Heather
White Stripe
HSB



Navy Heather
White Stripe
NST



Orchid Heather
White Stripe
STO



Oxford Heather
White Stripe
OXW



Paradise Heather
White Stripe
963



Royal Heather
White Stripe
ROW



True Red Heather
White Stripe
960



Wisteria Heather
White Stripe
956





The cuddle vibes are strong every time you wear this Cuddle Puff-Sleeve Top. Super-soft, warm and stretchy fabric is perfect for cooler temperatures. The crewneck style has feminine details like a cinched drawstring waist, three-quarter sleeves and gathering at shoulder seams and sleeve hems.

BW1101 *Cuddle Puff Sleeve Top*

- 6.5 oz., 80% viscose, 17% polyester, 3% elastane
- crew neckline
- cinched drawstring at waist hem
- gathering at shoulder seam and sleeve hem
- machine wash cold; tumble dry low

Sizes: Women's XXS - 2XL

MSRP \$48.85



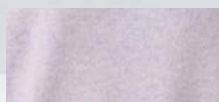
Espresso Heather
211



Oxford Heather
078



Sky Blue Heather
491



Wisteria Heather
566





There's comfort, and then there's oversized cuddle comfort. This oversized crew will take it to a new level with raglan sleeves and split side seams. The rounded hem design is super cute, and the ribbed collar, cuffs and waistband add texture and help hold the shape wash after wash.

BW1102 *Cuddle Oversized Crew*

- 6.2 oz., 80% viscose, 17% poly, 3% elastane knit
- hi/low hem; raglan sleeves
- crew neckline; rib cuffs and bottom band
- cover seamed armholes and neckline
- BXC woven logo label at wearers left side seam

Sizes: Women's XXS - 2XL

MSRP \$44.85



Black Heather
BLA



Espresso Heather
211



Navy Heather
NVH



Oxford Heather
OXH



Sky Blue Heather
491



Wisteria Heather
566



NEW





When it's cuddle weather outside, the Cuddle Soft Wrap Top gives you cuddle vibes anytime you want them. Ultra soft, warm and stretchy fabric literally wraps you in cozy comfort. A wide, circular knit tie closure threads through a hole set on the right side for a perfect wrap. With self-fabric binding at the neck, and 2x2 rib cuffs that hold their shape throughout the day while keeping the cold out. Get ready to wrap yourself in cuddly comfort!

BW1301 *Cuddle Soft Wrap Top*

- 6.2 oz., 80% viscose, 17% poly, 3% elastane
- wide, circular knit tie closure
- 2x2 rib cuffs

Sizes: Women's XXS - 2XL

MSRP \$48.85



Black Heather
BLA



Blush Heather
BLS



Navy Heather
NVH



Oxford Heather
OXH



Sage Heather
SAH





What's in a name? In this case, it's everything! Our Cuddle Soft Hoodie is a cozy layer constructed of viscose, poly and a bit of elastane for ultimate comfort and a just-right amount of stretch. Wear it on its own, or use it to layer up. The hood features wide, tubular drawcards for adjustability. 2x2 folded rib bottom opening and sleeve cuffs hold their shape wear after wear.

BW1501 *Cuddle Hoodie*

- 6.2 oz., 80% viscose, 17% polyester, 3% elastane
- 1 ply, 2 piece hood; self-fabric back neck tape
- 2x2 folded rib bottom opening and sleeve cuffs
- kangaroo pocket and wide, tubular knit drawcords

Sizes: Women's XXS - 2XL

MSRP \$54.85



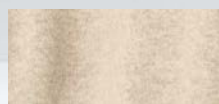
Black Heather
BLA



Espresso Heather
211



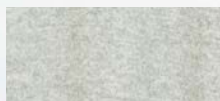
Navy Heather
NVH



Oatmeal Heather
OMH



Oxford Heather
OXH



Sage Heather
SAH



Sky Blue Heather
491



Wisteria Heather
566





When cold season strikes, make sure the Cuddle Cowl Pullover is in your rotation. It's made of crazy-soft Hacci fabric; a loopy knit texture with subtle stretch and a brushed finish that feels so good against the skin. We think you'll agree that the twill drawcord on the cowl neck is a really cool feature that you can adjust to your exact liking. And who doesn't like a kangaroo pocket, a shirttail hem and cuffs with thumbholes? So come on, it's time to Cuddle.

L12 Cuddle Cowl Pullover

- 6.2 oz., 80% viscose, 17% polyester, 3% elastane
- cowl neck with twill drawcord
- rib cuffs with thumb holes

Sizes: Women's XS - 3XL

MSRP \$48.85



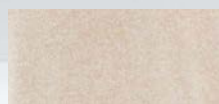
Black Heather
BLA



Espresso Heather
211



Navy Heather
NVH



Oatmeal Heather
OMH



Oxford Heather
OXH



Sage Heather
SAH



Sky Blue Heather
491



Wisteria Heather
566





We all love a gentle cuddle. Get that happy feeling anytime in our Cuddle Short. They're made of crazy-soft Hacci fabric, a loopy, open-knit texture with subtle stretch and a brushed finish that feels so good against your skin. Adjust the fit with a twill drawcord waist. Perfect for a cute and cuddly outfit.

L11 Cuddle Short

- 6.2 oz., 80% viscose, 17% polyester, 3% elastane
- sweater softness
- self-fabric waistband with drawcord

Sizes: Women's XS - 2XL

MSRP \$29.85



Black Heather
BLA



Navy Heather
NVH



Oxford Heather
OXH



Oxford Heather
Natural Stripe
ONS



Sky Blue Heather
491





Beyond average joggers, these pants are made of crazy-soft Hacci fabric. It's a loopy, open knit texture that feels as soft as a sweater, and functions more like comfy sweat pants. Only lighter, cozier, more stretchable and goes more places. The perfect casual chic hybrid. The self-fabric waistband adjusts to fit just right with a knotted drawcord, while the ribbed cuffs keep the cold out. These joggers are ready to cuddle. Are you?

L09 Cuddle Jogger

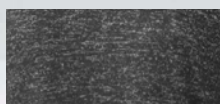
- 6.2 oz., 80% viscose, 17% polyester, 3% elastane
- sweater softness
- self-fabric waistband with drawcord

Sizes: Women's XS - 2XL

MSRP \$44.85



Black Heather
BLA



Charcoal Heather
CHH



Espresso Heather
211



Navy Heather
NVH



Oxford Heather
OXH



Sage Heather
SAH



Sky Blue Heather
491



Wisteria Heather
566





Goodbye boring sweatpants, hello Cuddle Wide Pant. The ultra-soft and lightweight knit fabric gently cuddles your skin, giving you good reason to be happy. You'll quickly like the relaxed and flowy silhouette with a hint of stretch for extra comfort. With a two-tone heather effect and a crazy-soft finish, be ready to cuddle in style (indoors or out).

L10 *Cuddle Wide Leg Pant*

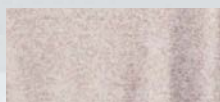
- 6.2 oz., 80% viscose, 17% polyester, 3% elastane
- sweater softness
- self-fabric waistband with drawcord

Sizes: Women's XS - 2XL

MSRP \$44.85



Black Heather
BLA



Espresso Heather
211



Oxford Heather
OXH





Slip into our Dream Fleece Pullover Hoodie, and feel the dreamy softness and warmth. The scallop-shaped bottom gives this pullover a feminine look. With a lined hood, antique silver 20L grommets for the drawcord exit, and 1x1 ribbed sleeve openings, it will be a cool weather favorite.

BW5301 *Dream Fleece Pull Over Hood*

- 6.9 oz., 67% poly, 29% rayon, 4% spandex
- 2-piece, 2-ply lined hood
- scallop-shaped bottom opening

Sizes: Women's XXS - 2XL

MSRP \$54.85



Blue Heather
BTH



Black Heather
BLA



Indigo Heather
INH



Mandarin Heather
816



Navy Heather
401



Oxford Heather
OXH



Paradise Heather
644



Purple Heather
PUH



Red Heather
RHT



Shamrock Heather
320





Dreaming of relaxing? Our Dream Fleece Pullover has a relaxed fit with a hint of stretch to make you feel as good as you look. The self-fabric collar with a half-zip placket and dropped shoulders mean you don't have to sacrifice style for comfort. Self-fabric cuffs and waistband complete the look of your new favorite fleece.

BW5205 *Dream Fleece Quarter Zip*

- 6.9 oz., 67% poly, 29% rayon, 4% spandex
- self-fabric collar, cuffs and bottom band
- zip front placket
- dropped shoulder

Sizes: Women's XXS - 2XL

MSRP \$54.85



Black Heather
BLA



Indigo Heather
INH



Navy Heather
401



Oxford Heather
078





The Dream Fleece Full-Zip Hoodie will forever change the way you feel about this essential cool weather piece. It feels so good, so soft, from the moment you put it on that it really is like wearing a dream! Features include a 2-ply lined hood, self-fabric drawcords and metal grommets for the drawcord exit. Concealed zipper teeth. Convenient kanga pocket keeps your hands toasty warm. 1x1 rib on bottom band and sleeve cuffs.

BW5201 *Dream Fleece Full Zip Hood*

- 6.9 oz., 67% poly, 29% rayon, 4% spandex
- 2-piece, 2-ply lined hood
- kanga pocket

Sizes: Women's XXS - 2XL

MSRP \$58.85



Black Heather
BLA



Indigo Heather
INH



Latte Heather
281



Orchid Heather
OCH



Oxford Heather
OXH





Complete your dreamy fleece feeling with the Dream Fleece Pant. Soft and warm poly-rayon construction with straight leg styling offers a flattering silhouette. 1x1 folded rib waistband with elastic set through center has a self-fabric tubular drawcord finished with knotted ends. Slash pockets with jersey pocket bags are perfect for holding valuables or warming your hands.

BW6601 *Dream Fleece Pant*

- 6.9 oz., 67% poly, 29% rayon, 4% spandex
- straight leg styling
- slash pockets with soft jersey pocket bags

Sizes: Women's XXS - 2XL

MSRP \$44.85



Black Heather
BLA



Indigo Heather
INH



Latte Heather
281



Navy Heather
401



Orchid Heather
OCH



Oxford Heather
OXH





L04 *Cozy Contrast Pullover*

- 8.6 oz., 52% cotton, 48% polyester loop Terry
- self neck band, sleeve cuffs and bottom band
- raglan sleeves
- self sleeve stripes
- kangaroo pocket
- contrast pocket, sleeves and neckband

Sizes: Women's XS - 3XL

MSRP \$24.85



Denim/
Oatmeal
DOA



Garnet/
Oatmeal
GRO



Grey/
Oatmeal
GYO





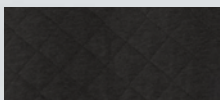
Bye-bye boring sweatshirt. Hello Quilted Crew! The all-over diamond quilting not only looks stylish, it also adds plenty of warmth. Raglan sleeves help you move more freely, while the tonal elbow patches show off a retro vibe. Rib knit at crewneck, cuffs and bottom hem. Layered or not, this is the pullover to call on again and again.

R08 *Quilted Crew*

- 4.1 oz., 60% cotton, 40% poly jersey; 100% poly fill
- sweatshirt/jersey hybrid
- quilting adds style and warmth

Sizes: Women's XXS - 2XL

MSRP \$59.85



Black
BLK



Espresso
210



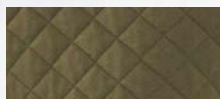
Indigo
IND



Mandarin
815



Natural
NAT



Olive
OLV



Oxford
OXF



Paradise
643



Wisteria
565



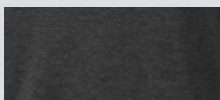


V03 *Women's Rally Lace-Up Pullover*

- 6.5 oz., 60% cotton, 40% polyester; enzyme and stone washed fleece
- rib neckband, sleeve cuffs, and bottom band
- forwarded side seam
- lace up detail on left side

Sizes: Women's XS - 3XL

MSRP \$32.85



Charcoal
CHA



Garnet
GAR



Navy
NAV



Oxford
OXF





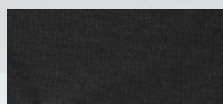
It's time to Rally. We're talking about a corduroy knit pullover with lived-in softness from day one. With a special enzyme and stone wash process, our essential solid crew rivals any vintage sweatshirt. Holds shape wash after wash with rib knitting at neck, cuffs and bottom band.

D02 *Rally Corduroy Crew*

- 8.3 oz., 60% cotton, 40% poly corduroy Knit
- enzyme and stone washed for lived-in comfort
- rib knit at neck, cuffs and bottom band

Sizes: Adult XS - 3XL

MSRP \$48.85



Black
BLK



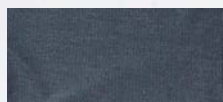
Carolina Blue
CAB



Hunter
HUN



Natural
NAT



Navy
NAV



Red
RED





Your everyday sweatshirt just got a whole lot better! This Lace-Up Pullover is made of super-soft French terry to feel great and hold its shape, and the lace-up front placket with gold eyelets means it's a lot cuter than a basic sweatshirt. The topstitched mid-chest seam adds clean lines to the look. The self-fabric drawcord is perfect for adjustability.

BW5401 *Women's Lace Up Pullover*

- 8.3 oz., 70% cotton, 30% polyester
- top-stitched mid-chest seam creates clean lines
- self-fabric drawcord for adjustability

Sizes: Women's XXS - 2XL

MSRP \$59.85



Black
001



Espresso
210



Natural
103



Navy
400



Oxford Heather
078



Pacific Blue
460



Paradise
643





Give your cozy weekend wardrobe a modern update with our Manchester Quarter Zip Pullover. Soft, corded cotton-poly fabric has a velour texture with a hint of built-in stretch for added comfort. A deep gold-tone zipper is accented with a retro ring zipper pull. Banded bottom and cuffs. Slash welt pockets complete the versatility.

BW5203 *Women's Manchester Quarter Zip*

- 8.3 oz., 60% cotton, 40% polyester fleece
- rib waistband with self drawcord
- set on front pockets

Sizes: Women's XXS - 2XL

MSRP \$88.85



Castlerock
085



Espresso
210



Moss
313



Mystic
510



Natural
103



Navy
400





Slip into the all-around performing comfort of the Travel V-Neck Pullover. It's casual, warm, soft and oh-so comfy! With raglan sleeves, ribbed cuffs and bottom band and raw-edge seams, this will be a favorite fleece option wherever your days take you. With flattering body contour front seams and a self-fabric back moon.

BW5402 *Women's Travel V-Neck Pullover*

- 8.3 oz., 60% cotton, 40% polyester fleece
- raglan sleeves
- ribbed cuffs and bottom band with raw edge seams

Sizes: Women's XXS - 2XL

MSRP \$48.85



Charcoal
090



Mandarin
815



Navy
400



Oxford Heather
078



Paradise
643



Wisteria
565





Finish off your cozy fleece style with the Travel Crop Pant. Ultra-soft and warm cotton-poly fleece has a ribbed waistband with self-drawcord and set-on front pockets. Reverse face side panels add to the comfy, casual appeal.

BW6202 *Women's Travel Crop Pant*

- 8.3 oz., 60% cotton, 40% polyester fleece
- rib waistband with self drawcord
- set on front pockets

Sizes: Women's XXS - 2XL

MSRP \$44.85



Charcoal
090



Mandarin
815



Navy
400



Oxford Heather
078



Paradise
643



Wisteria
565





Raise your hoodie game by adding this crazy-cute cropped style to your rotation. The cozy warmth of fleece will quickly make it a fall favorite. The ribbed cuffs and waistband add to the design and the durability.

BW5404 Women's Fleece Cropped Hood

- 7.1 oz., 50% cotton, 50% polyester brushed fleece
- 2-ply self-fabric hood
- top yoke panel in solid and contrasting colors
- rib cuffs and bottom band
- BXC woven logo label at wearers left side seam

Sizes: Women's XXS - 2XL

MSRP \$42.85



Brick Red
Oxford Heather
965



Charcoal
Heather
091



Mandarin
815



Navy
Oxford Heather
914



Oxford
Heather
078



White
Oxford Heather
978



Shamrock
320



True Royal
425



NEW



Designed for comfort and versatility, these fleece shorts have a self-fabric covered elastic waistband for comfort and a self-fabric drawstring for adjustability. You'll love the look of the side seam V-notches, and the side pockets are great for storing light items.

BW6502 *Women's Fleece Short*

- 7.1 oz., 50% cotton, 50% polyester brushed fleece
- 3 1/2" inseam; high waist fit
- self-fabric covered elastic waistband; self-fabric drawstring
- side entry pockets; sideseam v-notches
- BXC woven logo label at wearers left side seam

Sizes: Women's XXS - 2XL

MSRP \$28.85



Charcoal Heather
091



Oxford Heather
078



Shamrock
320



Navy
400



True Royal
425



Brick Red
650



Mandarin
815





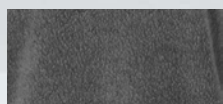
Our Fleece Out Crew soft-washed, reverse fleece pullover feels and looks so good, you'll never want to take it off! The fleece typically seen on the inside is sewn on the outside, elevating the snuggle factor. Retains shape with rib knitting at the crewneck, cuffs and vented bottom hem. It's a perfect time to "Fleece Out"!

K01S Reverse Fleece Out Crew

- 6.5 oz., 60% cotton, 40% poly reverse fleece
- snuggly soft on the outside
- boxy fit with bottom side vents

Sizes: Women's XXS - 2XL

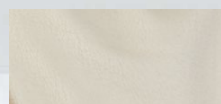
MSRP \$44.85



Charcoal
CHA



Mandarin
815



Natural
NAT



Navy
NAV



Olive
OLV



Orchid
ORC



Purple
PRP



Red
RED



Royal
ROY



Sage
SAG



(K01P) Navy Tie Dye
NTD





Sometimes it's better to go in reverse. That's certainly the case in our reverse fleece short. A comfy seam-folded waistband stays put and adjusts, thanks to a tubular braided drawcord. Find handy slash pockets, plus an old-school coin pocket. Scalloped shaping and raw edges give the leg openings a bit more oomph.

K02S *Reverse Fleece Out Short*

- 6.5 oz., 60% cotton, 40% poly reverse fleece
- snugly soft on the outside
- seam-folded waist with braided drawcord

Sizes: Women's XXS - 2XL

MSRP \$29.85



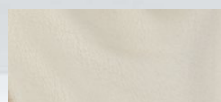
Charcoal
CHA



Blush
BLS



Mandarin
815



Natural
NAT



Navy
NAV



Purple
505



True Red
660



True Royal
425



Sage
SAG





Oversized, with raglan sleeves, this terry crewneck pullover was made for comfort. Plenty of room for layering, but just as cute on its own with the hi/low hem. Ribbed cuffs and waistband ensure it holds its shape wear after wear.

BW3101 *Harlow Oversized Terry Pullover*

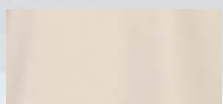
- 8.3 oz., 70% cotton, 30% poly French terry
- hi/low hem; raglan sleeves
- crew neckline; rib cuffs and bottom band
- cover seamed armholes and neckline
- BXC woven logo label at wearers left side seam

Sizes: Women's XXS - 2XL

MSRP \$42.85



Charcoal Heather
091



Natural
103



Navy Heather
401



Oxford Heather
078

NEW





It's hard to resist the cropped fit of this sleeveless, half-zip pullover. Layered or worn alone, the ribbed shoulder panels and stand-up collar are designed to enhance the look. With side vents for extra comfort and front zippered pockets to stow your stuff.

BW2407 *Women's Sleeveless Terry Half Zip Pullover*

- 8 oz., 70% cotton, 30% poly French terry
- double welt placket
- half-zip with stand-up rib collar
- side vents; front zip pockets
- BXC woven logo label at wearers left side seam

Sizes: Women's XXS - 2XL

MSRP \$44.85



Charcoal Heather
091



Natural
103



Navy Heather
401



Oxford Heather
078

NEW





Comfort? Check. Cute? We've got you. Adventure? You decide. These terry safari shorts will definitely be a regular in your shorts rotation. With a ribbed elastic waistband for comfort and a dyed-to-match twill drawcord for adjustability. The applied pockets with ribbed trim raise the style level even more.

BW6503 *Women's French Terry Safari Short*

- 8 oz., 70% cotton, 30% poly French terry
- 3" inseam
- rib elastic waistband; dyed to match twill drawcord
- self-fabric applied pockets with rib trim
- BXC woven logo label at wearers left side seam

Sizes: Women's XS - 2XL

MSRP \$32.85



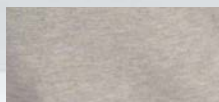
Charcoal Heather
091



Natural
103



Navy Heather
401



Oxford Heather
078

NEW



NEW



Getting colder? No worries! Stay warm in this Alpine fleece jacket with forward princess seams for a streamlined and flattering fit. A concealed full-zip front and a self-fabric collar, cuffs and waistband add to the look. The thumbhole cuffs will keep the sleeves in place and the cold out.

BW5207 *Women's Alpine Fleece Full Zip*

- 7 oz., 100% polyester double knit fleece
- self-fabric collar, cuffs and bottom band
- forward princess seams
- concealed full zip front
- contrast cover seaming; cuff thumbholes

Sizes: Women's XXS - 2XL

MSRP \$58.85



Black Heather
010



Oxford Heather
078



Navy Heather
401





So cozy and warm, the Everest Half-Zip Pullover looks as good as it feels. Matte tonal bindings complement the poly Everest fleece body. Adjusts to your perfect fit thanks to the foldover elasticized bottom opening for a snugger fit and an inner drawcord that provides added adjustability to keep the cold out. Plus, pockets!

BW8501 *Everest Half Zip*

- 8.4 oz, 100% poly Everest fleece
- matte tonal bindings for standout style
- foldover elasticized bottom and an inner drawcord for a custom fit

Sizes: Women's XXS - 2XL

MSRP \$58.85



Black
Black Trim
BLK



Espresso
Black Trim
210



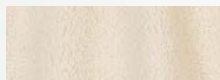
Indigo
Indigo Trim
IND



Moss
Black Trim
313



Mystic
Black Trim
510



Natural
Black Trim
NAB



Olive
Olive Trim
OLV



Oxford
Charcoal Trim
007





FZ01 *Fuzzy Fleece Pullover*

- top/sleeves: 8.5 oz., 100% polyester stripe fuzzy fleece
- bottom: 7.4 oz. 100% polyester fuzzy fleece
- 1' 1/4" grosgrain placket with gold snaps
- contrasting collar, upper body and sleeves
- side seam pockets
- sleeve and bottom opening finished w/jersey bindings
- unisex design

Sizes: Women's XS - 3XL

MSRP \$34.85



Camel Stripe/
Natural
CSN



Navy Stripe/
Natural
NSN



Oxford Stripe/
Natural
OXN





Get that warm bear hug feeling every time you throw on this Fuzzy Fleece Crew. Rib knit cuffs keep out chilly drafts while giving you “pull power” over your hands when desired. With a rib knit crewneck, a slight hi-low hem and side vents, there’s no limit to when (and where) you can have that oh-so-cozy sensation.

FZ03 *Fuzzy Fleece Crew*

- 7.3 oz., 100% poly fuzzy fleece
- cozy without feeling bulky
- rib knit cuffs

Sizes: Women’s XS - 3XL
Youth YM - YL

MSRP \$29.85 - Women’s
\$24.85 - Youth



Frosty Grey
FGR





If you're a creature of comfort, especially on cold, gloomy days, you'll quickly appreciate our Remy Fuzzy Fleece Pullover. Hibernation not required. You'll want to be seen in this one. Check out the wide contrast arm bands and the retro ring pull on the quarter zipper. And your hands will love our jersey-lined muff pockets. Get that oh-so-cozy sensation wherever you go.

FZ04 *Remy Fuzzy Fleece Pullover*

- 7.3 oz., 100% poly fuzzy fleece
- cozy without feeling bulky
- quarter zip with retro ring pull

Sizes: Women's XS - 3XL

MSRP \$34.85



Black/
Natural
BNA



Frosty Grey/
Natural
FRN



Navy/
Natural
NVN





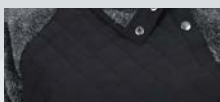
Who says a super-plush fleece pullover can't have swag? Nobody at Boxercraft. Diamond quilted woven fabric at front yoke and inside sleeves not only looks stylish, it adds warmth. The asymmetrical snap quarter placket makes a current statement unsnapped or snapped to the tippy top. Contrast trim adds form and function. Of course, the fuzzy fleece acts like your own body heater, and the jersey-lined muff pocket rivals toasty mittens.

FZ06 *Quilted Fuzzy Fleece Pullover*

- 7.3 oz., poly fuzzy fleece; 2.1 oz., poly quilted woven
- chill-busting comfort
- asymmetrical snaps and quilted contrast

Sizes: Women's XS - 3XL

MSRP \$34.85



Black Pepper/
Black
BPB



Navy Pepper/
Navy
NPB





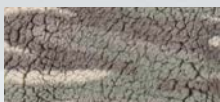
How can plush Sherpa fleece make you feel? Toasty warm. Really comfortable. Adventure ready. Styled with a half-moon back yoke and twill taping inside neckline. Zip to the top or keep it relaxed with the collar open. However you wear it (or layer it), you'll be glad to have this Sherpa Quarter-Zip Pullover handy during cold season.

Q10 *Sherpa Quarter Zip Pullover*

- 8.9 oz., 100% poly Sherpa
- chill-busting warmth
- garment dyed for unique character; colors may vary

Sizes: Women's XS - 3XL

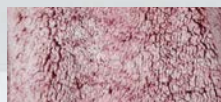
MSRP \$34.85



Desert Camo
DCM



Frosty Chocolate
FCH



Frost Garnet
FGN



Frosty Grey
FGR



Frosty Hunter
FHU



Frosty Navy
FNV



Navy/Frosty Grey
NFG



Garnet Black Plaid
GBF



Granite/Natural
GNP





Be adventure ready and stay toasty warm via our Sherpa Full-Zip Jacket. Details matter, like handwarmer pockets, cinch drawcord bottom, elasticized cuffs and half moon facing at back neck. Zip to the top or keep it relaxed with the collar open. However you wear it, you'll be glad to have this plush Sherpa fleece jacket handy during cold season.

Q12 *Women's Sherpa Full-Zip Jacket*

- 8.9 oz., 100% poly Sherpa
- chill-busting warmth
- garment dyed for unique character; colors may vary

Sizes: Women's XS - 3XL

MSRP \$34.85



Frosty Grey
FGR



Natural
NAT





Our Adventure Jacket lives up to its name while it keeps you ready for all of life's many adventures. The quilted poly shell has woven arms for stretchable comfort and flexibility, while delivering lightweight warmth and protection. Features a zippered chest pocket, and side-seam pockets with lightweight pocket bags.

BW8101 *Women's Adventure Jacket*

- body: 1.5 oz., 100% poly
- woven sleeves: 11.2 oz., 68% rayon, 28% chinlon, 4% spandex
- fill: 3 oz., 100% poly
- 3-ply body with fiber fill
- zippered chest pocket
- side-seam pockets

Sizes: Women's XXS - 2XL

MSRP \$88.85



Black
BLK



Navy
NAV



Slate
SLT





The right jacket makes all the difference. Our Quilted Market Jacket keeps you toasty while looking stylish. A woven outer has 100% poly fill for extra warmth. Features a rolled sleeve cuff that is secured with a tack, antique brass snaps, and welt pockets with soft jersey pocket bags to warm the hands or hold essentials.

BW8102 *Quilted Market Jacket*

- 3.4 oz., Woven fabric
- (navy, pacific blue, & paradise) 70% cotton, 30% poly
- (black) 100% cotton; Fill: 100% poly
- self-fabric binding and twill back neck tape
- rolled sleeve cuff secured with a tack

Sizes: Women's XXS - 2XL

MSRP \$84.85



Black
BLK



Navy
NAV



Pacific Blue
460



Paradise
643





Get the support you need with the Support Your Team Bra. This sporty style can be worn alone or underneath other tops or jackets to help make the most of every workout. Cotton-spandex construction is breathable with enough stretch to move with you. Racerback styling is super comfortable and supportive.

S101 *Support Your Team Bra*

- 6.5 oz., 90% cotton, 10% spandex
- versatile sports bra styling
- racerback detailing

Sizes: Women's S - XL
Youth YS - YL

MSRP \$16.85 - Women's
\$14.85 - Youth



Black
BLK





Whether worn underneath your layering or as a workout top, there's a lot to love about the Sweetheart Sports Bra. The design is both supportive and flattering with overstitched front contour seams and neck and armhole seams. Racerback styling provides an excellent range of motion for all of your activities, while the sweetheart neckline is flattering for most body types. Encased elastic band is comfortable and helps prevent the bra from riding up.

BW2701 *Sweetheart Sports Bra*

- 8 oz., 91% cotton, 9% spandex
- overstitched front contour, neck and armhole seams
- racerback styling

Sizes: Women's XXS - 2XL

MSRP \$28.85



Black
001



Castlerock
085



Latte
280



Mystic
510



Navy
400





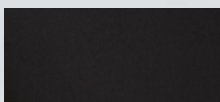
These woven shorts have added stretch for comfort and a perfect fit. The wide, high waistband and forward-set side seams are super flattering, and the waistband has a back interior pocket to keep light items secure. You'll also love the attached liner shorts with a built-in cell phone pocket.

BW6103 *Stretch Woven Lined Short*

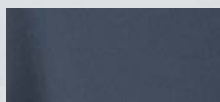
- 3.4 oz., 90% poly, 10% spandex; Lining: 100% polyester jersey
- wide high waistband with center back interior pocket
- interior attached spandex liner short w/cell phone pocket

Sizes: Women's XXS - 2XL

MSRP \$34.85



Black
001



Castlerock
085



Indigo
430



Mystic
510





Of course, leggings are a necessity, but they're not all built the same. Ours are smoothly knit and packed with plenty of stretch, but not a struggle to pull on. The elasticized waist falls mid-rise, and not jacked up above your waist like many others. Most importantly, you'll Love'em Longer with full length and versatile enough to wear with anything.

S08 *Love 'Em Longer Legging*

- 6.5 oz., 90% cotton, 10% spandex
- versatile sports bra styling
- racerback detailing

Sizes: Women's XS - 2XL
Youth YS - YL

MSRP \$22.85 - Women's
\$18.85 - Youth



Black
BLK



Charcoal
CHA



Navy
NAV





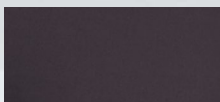
Live in them. Play in them. Love them. The Luna Legging proves that with the right leggings, you can do most anything! The poly-spandex construction moves with you and gives plenty of comfortable support. With a front waistband pocket, seamed panels and mesh side-panel pocket for added convenience.

BW6301 *Luna Legging*

- 6.8 oz., 86% poly, 14% spandex
- front waistband pocket with lightweight pocket bag
- mesh side panel pocket

Sizes: Women's XXS - 2XL

MSRP \$48.85



Black
BLK



Navy
NAV



Slate
SLH





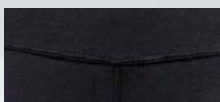
The name says it all: you will adore the level of support and comfort that the Adore Leggings offer to your active lifestyle. Designed with overstitched seams, the leggings have a wide high waistband and a contoured sweetheart back waistband that is both extra comfortable and flattering. An exterior side pocket is perfect for holding your phone during long walks or jogs. With a 7/8 length.

BW6302 *Adore Me Legging*

- 6.5 oz., 91% cotton, 9% spandex
- wide, high-waisted band with contoured sweetheart style back
- one exterior side pocket

Sizes: Women's XXS - 2XL

MSRP \$38.85



Black
001



Castlerock
085



Latte
280



Mystic
510



Navy
400





Almost too cute for jogging, there's much to love about our woven, stretch Sport Jogger! The ankle-length design has a wide drawstring waistband for added style, comfort and adjustability. Inner elastic pulls at the leg openings keep them right where you want them, and you can use the side pockets to stow your stuff away.

BW6201 *Women's Sport Jogger*

- 3.4 oz., 90% poly, 10% spandex; stretch woven
- wide waistband with drawcord
- inner elastic pull at leg opening
- side entry pockets
- ankle length

Sizes: Women's XXS - 2XL

MSRP \$44.85



Black
001



Castlerock
085



Indigo
430



Mystic
510





Designed to enhance your active lifestyle, the Flex Quarter-Zip Pullover will be a favorite. The stretch woven design is soft to the touch, with built-in stretch that keeps it flexible and comfortable with every move. Self-fabric quarter-zip placket makes it easy to slip on and off. With sleeve thumbholes and front pockets set at the waist.

BW5202 *Women's Flex Quarter Zip*

- 4.8 oz., 95% poly, 5% spandex
- stretch woven
- self-fabric quarter zip placket
- sleeve thumbholes
- front pocket set at waist

Sizes: Women's XXS - 2XL

MSRP \$49.85



Black
001



Castlerock
085



Espresso
210



Mystic
510



Navy
400





Morning runs are a treat in our cute and comfy activewear. Made to fit an active lifestyle, this sporty full-zip jacket can get you through those workouts that require greeting the crisp morning breeze. Made from cotton and spandex fabric blends, this jacket is designed with a slightly snug fit that has the ability to stretch accordingly for activities. Pair it with leggings, sneakers, and a tee/tank to achieve a sporty, active look.

\$89 *Practice Jacket*

- 6.5 oz., 90% cotton, 10% spandex
- cadet collar
- full front zipper
- kangaroo pocket

Sizes: Women's XS - 2XL
Youth YS - YL

MSRP \$42.85 - Women's
\$36.85 - Youth



Black
BLK





After yoga class. During a breezy 5k run. On the city streets. Our Studio Jacket is always ready to go. Made from a moisture-wicking performance fabric that moves with you. Added ventilation via mesh inserts at back yoke and sleeves. Super functional with two zippered pockets, full-zip front and thumbhole cuffs.

\$95 *Studio Jacket*

- 6.8 oz., 88% poly, 12% spandex body
- 5.8 oz., 90% poly, 10% spandex side and back mesh inserts
- stretches with your every move
- body-mapped ventilation

Sizes: Women's XS - 2XL
Youth YS - YL

MSRP \$48.85 - Women's
\$44.85 - Youth



Black
BLK



Cozy, comfortable loungewear is always a welcome addition to your casual rotation, and our Haley Flannel Pant is no exception. Lazy mornings sleeping in or cuddling up to binge your favorite shows, these pants are a perfect choice. They feature double-brushed softness and a folded waistband with twill outer drawcord. And yes, they have pockets!

BW6620 Women's Haley Flannel Pant

- 4.3 oz., 100% cotton flannel
- folded waistband
- twill outer drawcord

Sizes: Women's XXS - 2XL

MSRP \$29.85

					
Green Charcoal Buffalo Check BCG	Black Gold Plaid BGO	Paradise Buffalo Check BP1	Autumn Buffalo Check BP2	Black White Buffalo Check BWF	Black White Plaid BWP
					
Charcoal Black Buffalo Check CKB	Navy Field Day FD1	Kelly Field Day FD2	Royal Field Day FD3	Orange Field Day FD4	Crimson Field Day FD5
					
Green White Plaid GWP	Kingston Plaid H04	Heritage Black Plaid HEB	Heritage Hunter Plaid HEH	Heritage Maroon Plaid HEM	Heritage Garnet Plaid HGP
					
Heritage Carolina Blue Plaid HNC	Heritage Navy Orange Plaid HOG	Burnt Orange Kingston Plaid KN1	Red Navy Kingston Plaid KN2	Oxford Navy Kingston Plaid KN3	Oxford Royal Kingston Plaid KN4
					
Orange Indigo Metro Plaid MP1	Maroon Plaid MRP	Navy Columbia Plaid NCP	Navy Silver Plaid NSP	Navy Gold Plaid NGP	Purple White Plaid PWP
					
Red Black Buffalo Plaid RBB	Royal Buffalo Plaid RKB	Royal Silver Plaid RSV	Red White Plaid RWP	Lavender Sophia Plaid SP1	Pink Sophia Plaid SP4
					
Scottish Tartan STP	Oxford Red Tomboy Plaid TB1	Charcoal Lavender Tomboy Plaid TB2	Navy Pink Tomboy Plaid TB3		



Loungewear is always in season! From lazy weekends in to relaxing after work or school, our Harley Flannel Pant is the one you'll reach for time after time. These pants will keep you warm and comfortable with double-brushed cotton softness. Neatly finished with a self-folded waistband (with inner drawcord), hidden button-close fly, and yes, they have pockets!

BM6624 Men's Harley Flannel Pant

- 4.3 oz., 100% cotton flannel
- self-folded waistband
- functional fly

Sizes: XXS - 3XL

MSRP \$29.85



Green Charcoal
Buffalo Check
BCG



Black Gold
Plaid
BGO



Autumn Buffalo
Check
BP2



Black White
Buffalo Check
BWF



Black White
Plaid
BWP



Charcoal Black
Buffalo Check
CKB



Navy
Field Day
FD1



Kelly
Field Day
FD2



Royal
Field Day
FD3



Orange
Field Day
FD4



Crimson
Field Day
FD5



Garnet
Black Plaid
GBP



Green
White Plaid
GWP



Kingston
Plaid
H04



Heritage Black
Plaid
HEB



Heritage
Hunter Plaid
HEH



Heritage
Maroon Plaid
HEM



Heritage
Garnet Plaid
HGP



Heritage
Carolina Blue Plaid
HNC



Heritage Navy
Orange Plaid
HOG



Orange Indigo
Metro Plaid
MP1



Maroon
Plaid
MRP



Navy Columbia
Plaid
NCP



Navy Gold
Plaid
NGP



Navy Silver
Plaid
NSP



Burnt Orange
Kingston Plaid
KN1



Red Navy
Kingston Plaid
KN2



Oxford Navy
Kingston Plaid
KN3



Oxford Royal
Kingston Plaid
KN4



Purple White
Plaid
PWP



Red Black
Buffalo Plaid
RBB



Royal
Buffalo Plaid
RKB



Royal
Silver Plaid
RSV



Red
White Plaid
RWP



Oxford Red
Tomboy Plaid
TB1



Charcoal Lavender
Tomboy Plaid
TB2



Scottish
Tartan
STP





Outdoor activities, casual days out or just lounging around are all options for these comfortable cotton flannel joggers. The interior-drawcord style is easy to wear, with a self-fabric fold over elastic waistband. The self-elastic leg openings keep them in place, and the wide-seam front pockets are great for keeping your belongings close.

BM6625 Adult Flannel Jogger

- 4.3 oz., 100% cotton flannel
- self-fabric fold over elastic waistband; interior drawcord
- side-seam front pockets and self elastic leg openings

Sizes: Adult XXS - 2XL

MSRP \$29.85



Green White
Plaid
GWP



Heritage Black
Plaid
HEB



Orange
Kingston Plaid
KN1



Navy Silver Plaid
NSP



Purple White
Plaid
PWP



Red Black
Buffalo Plaid
RBB



Royal Silver
Plaid
RSV



Scottish
Tartan
STP





Laid-back comfort is what these poly flannel lounge pants are all about. Stylish enough for your most casual days out, and comfortable enough for your most relaxed days in. A simple seamed waistband and a turnback finish at the leg openings complete the look.

BY6624 Youth Poly Flannel Pant

- 4.3 oz., 100% polyester
- no drawcord; seamed waistband
- turnback finish at leg opening; inner side seam pockets

Sizes: Youth YS - YXL

MSRP \$26.85

Special Note: Recommend Embroidery or Heat Transfer Embellishments



Black Gold
Plaid
BGO



Black White
Plaid
BWP



Green White
Plaid
GWP



Orange
Kingston Plaid
KN1



Navy Columbia
Plaid
NCP



Navy Gold
Plaid
NGP



Navy Silver
Plaid
NSP



Purple White
Plaid
PWP



Red Black
Buffalo Plaid
RBB



Royal Silver
Plaid
RSV



Red White
Plaid
RWP



Scottish
Tartan
STP





Your go-to for relaxing in comfort, our Flannel Short has feminine details that set it apart from the others. The 2-ply waistband has a satin drawcord, with satin piping at the leg openings. Pure comfort that's completely cute.

BW6501 Women's Flannel Short

- 4.3 oz., 100% cotton flannel
- 2-ply waistband with elastic
- tonal 3/8" cut and sew satin drawcord, and satin piping at leg opening

Sizes: Women's XXS - 2XL

MSRP \$22.85



SIZING GUIDE

Pants, Shorts & Tops Have A +/- 1 1/2" Tolerance

WOMEN'S FLANNEL FIT - BW6620

SIZES	WAIST RELAXED	FRONT RISE	BACK RISE	INSEAM
XXS	25"	10 1/4"	14 3/4"	26 1/4"
XS	26"	10 3/4"	15 1/4"	28 3/4"
S	28"	11 1/4"	15 3/4"	29 1/4"
M	30"	11 3/4"	16 1/4"	29 3/4"
L	33"	12 1/4"	16 3/4"	30 1/4"
XL	36 1/2"	12 3/4"	17 1/4"	30 3/4"
2X	38"	13 1/4"	17 3/4"	31 1/4"



CHEST

Measure at fullest point

WAIST

Relaxed

INSEAM

Inner leg length is measured from the top of the inside leg down to the bottom edge of inside leg



MEN'S FLANNEL FIT - BM6624

SIZES	WAIST RELAXED	FRONT RISE	BACK RISE	INSEAM
XXS	26"	12 3/4"	15 1/4"	28 1/4"
XS	28"	13 1/4"	16"	28 3/4"
S	30"	13 3/4"	16 1/2"	29 1/4"
M	31"	14 1/4"	17"	29 3/4"
L	33"	14 3/4"	17 1/2"	30 1/4"
XL	36"	15 1/4"	18"	30 3/4"
2X	38"	15 3/4"	18 1/2"	31 1/4"
3X	40"	16 1/4"	19"	31 3/4"

WOMEN'S - TOPS

SIZES	BUST
XXS (00)	27.5" - 29.5"
XS (0-2)	29.5" - 32.5"
S (4-6)	32.5" - 35.5"
M (8-10)	35.5" - 38"
L (12-14)	38" - 40.5"
XL (16)	40.5" - 43"
2X (18)	43" - 45.5"
3X (20)	45.5" - 47"

WOMEN'S - BOTTOMS

SIZES	WAIST	HIPS	INSEAM
XXS (00)	24" - 25.5"	31.5" - 33"	28" - 29"
XS (0-2)	25.5" - 26.5"	33" - 35.5"	29" - 30"
S (4-6)	26.5" - 29"	35.5" - 37.5"	30" - 31"
M (8-10)	29" - 31.5"	37.5" - 39.5"	31" - 32"
L (12-14)	31.5" - 34.5"	39.5" - 41.5"	32" - 33"
XL (16)	34.5" - 38.5"	44" - 46"	33" - 34"
2X (18)	38.5" - 42.5"	46" - 49"	34" - 35"
3X (20)	42.5" - 46"	49" - 52"	35" - 36"

ADULT FLANNEL JOGGER FIT - BM6625

SIZES	WAIST WIDTH EXT.	FRONT RISE	BACK RISE	INSEAM
XXS	17"	11 1/2"	15 7/8"	32"
XS	18 1/2"	11 7/8"	16 1/4"	32"
S	19 1/2"	12 1/4"	16 5/8"	32"
M	20 1/2"	12 5/8"	17"	32"
L	21 1/2"	13"	17 3/8"	32"
XL	23 1/2"	13 3/8"	17 3/4"	32"
2X	25 1/2"	13 3/4"	18 1/8"	32"
3X	27 1/2"	14 1/8"	18 1/2"	32"

MEN'S/UNISEX - TOPS

SIZES	CHEST
XXS	29.5" - 32.5"
XS	32.5" - 34"
S	34" - 36"
M	38" - 40"
L	42" - 44"
XL	46" - 48"
2X	50" - 52"
3X	54" - 56"

MEN'S/UNISEX - BOTTOMS

SIZES	WAIST	HIPS	INSEAM
XXS	25" - 27"	-	28" - 29"
XS	27" - 29"	-	29" - 30"
S	29" - 31"	-	30" - 31"
M	31" - 32"	-	31" - 32"
L	33" - 34"	-	32" - 33"
XL	35" - 36"	-	33" - 34"
2X	37" - 38"	-	34" - 35"
3X	39" - 40"	-	36" - 37"

YOUTH FLANNEL FIT - BY6624

SIZES	WAIST RELAXED	FRONT RISE	THIGH WIDTH	INSEAM
YS (6-8)	11 1/4"	9 5/8"	11"	25"
YM (8-10)	12"	10"	11 1/2"	26 1/2"
YL (10-12)	12 3/4"	10 3/8"	12"	28"
YXL (14-16)	13 1/2"	10 3/4"	12 1/2"	29 1/2"

YOUTH - TOPS

SIZES	CHEST
YS (8-10)	25" - 27"
YM (10-12)	28" - 30"
YL (12-14)	31" - 33"

YOUTH - BOTTOMS

SIZES	WAIST	HIPS	INSEAM
S (8-10)	22" - 23"	-	21" - 23"
M (10-12)	24" - 25"	-	24" - 26"
L (12-14)	26" - 27"	-	26" - 27"