

# STEAM STERILIZER



### Control system

- Stable performance, can consult or output through printer
- 7 inch Touch screen, clear and easy to operate
- Three levels of operation password to ensure the operation authority at all levels

### Configuration

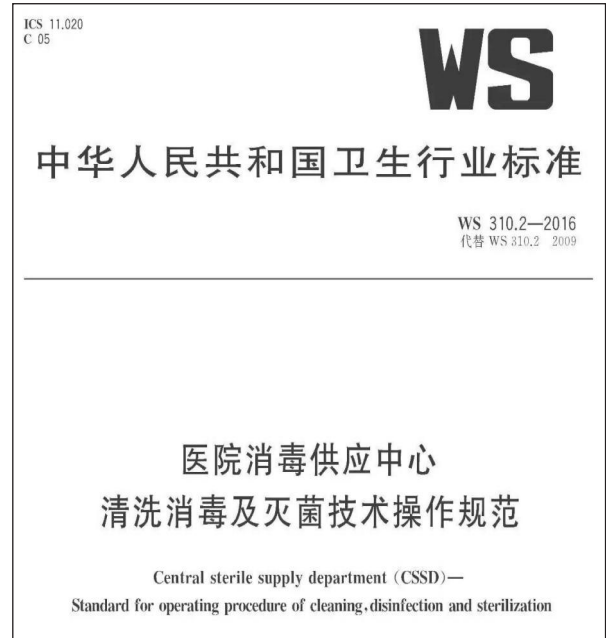
- Automatic vertical lift door
- Sanitary stainless steel pipe with stainless steel high temperature steam filter
- Adopt high quality imported Italian zero pressure start solenoid valve

### Technical performance

- Automatic water filling, low water level alarm prompt
- The double door interlock is opened after sterilization
- Function and solution of automatic fault prompt

### Safety performance

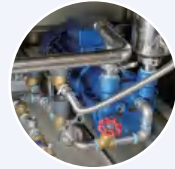
- Automatic protection of leakage current and over current
- Ultra high temperature, ultra low temperature, overpressure, water shortage alarm
- Release the safety interlock function of sealed quick opening door



Water processor



Filter



Stainless steel pipe



High temperature resistant sealing ring



Controller

Model	Dimensions LxWxH	Chamber Dimension	Cleaning capacity	Voltage	Power	Note
HX-60×70BIS-4P	121×97×175	60×70×100	400	three-phase	18	Single/Double door
HX-60×70BID-4P	125×97×175	60×70×100	400	three-phase	18	Single/Double door
HX-65×78BIS-6P	145×110×185	65×78×120	600	three-phase	27	Single/Double door
HX-65×78BID-6P	146×110×185	65×78×120	600	three-phase	27	Single/Double door
HX-65×78BIS-8P	175×110×185	65×78×150	800	three-phase	33	Single/Double door
HX-65×78BID-8P	176×110×185	65×78×150	800	three-phase	33	Single/Double door
HX-75×105BIS-12P	185×195×176	75×105×150	1200	three-phase	43	Single/Double door
HX-75×105BID-12P	185×195×176	75×105×150	1200	three-phase	43	Single/Double door

Note: All dimensions are in mm, the product will be configured according to the demand in actual production, parameters are for reference only.