



WEX-301 EMERGENCY IP EXCHANGE

FEATURES AND BENEFITS



WEX-301-WM

- Up to 10 external phone lines or SIP trunk
- Up to 100 internal emergency phone lines
- Multiple concurrent calls
- Line hunting for external lines
- All or group call capabilities
- Key switch to silence audible alarms
- Equipped with self-diagnostics
- Simple local and remote programmability
- Maintenance free
- Includes 10 internal line base license

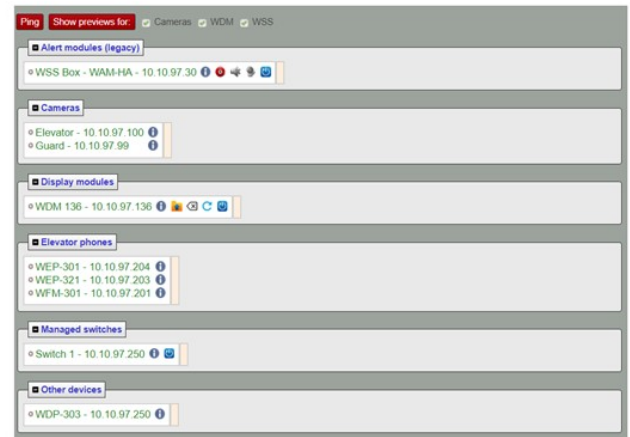
TYPICAL APPLICATIONS

Elevator Emergency
 Communication Systems,
 Property Emergency
 Communication Systems,
 Property Intercom Systems

Description: The WEX-301 acts as the central switch or controller for the WebbSafe 300 IP system and is responsible for all call-routing and monitoring the health of the network. Each WebbSafe 300 system requires at least one WEX-301.

WEX User Interface:

The WEX-301 is responsible for handling call-routing and monitoring all the devices connected to the network. Its bilingual GUI provides access to a set of features such as: Access to IP Cameras (If available), Texting, Equipment Status and Event Logs.



Ordering Information

WEX-301-00	Exchange Module	Unhoused, 6.5"Wx4"Hx2"D
WEX-301-WM	Exchange Module	Wall mount housed with brushed stainless steel faceplate: 15"W x 4"H
WEX-301-RM	Exchange Module	Rack mount housed with brushed stainless steel faceplate: 17"W x 4"H

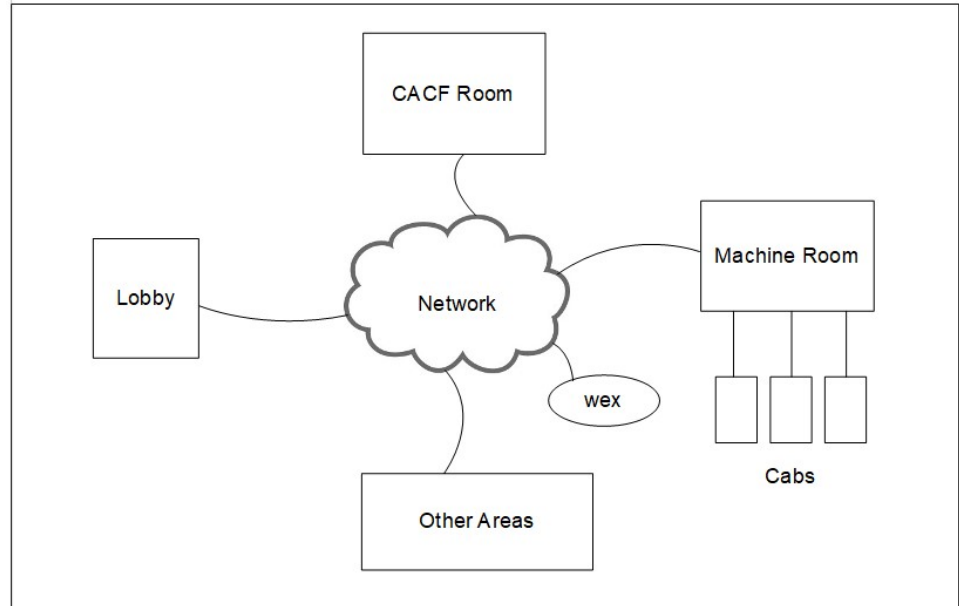
*Both Rack Mont and Wall Mount have the same back box dimensions: 14"W x 3"H x 4"D





WEX-301 EMERGENCY IP EXCHANGE

System Overview:



Specification:

Power:	POE or 5V - 3A, Max.30W
Communication:	SIP, Proprietary protocols over Ethernet
Buzzer:	80dB at 3m
Cable Usage:	Cat5
Port Requirement:	RJ45
Distance Between Connectors:	IEEE 802.3 Standard
Output:	Up to 5 NO or NC dry contact
Visual Indicators:	Normal, Silence and Alarm
Display (Optional):	2x16 Character LCD
Temperature:	0 - 60°C
Certification/ Compliance:	ADA, FCC - Part 68, Industry Canada, ASME A17.1, CSA B44
Shipping Weight:	3.8lb, 1.7kg
Warranty:	2 years from date of purchase

Supplied and serviced by:

information may change without notice



Member of the CIS Group of Companies
Vancouver • Toronto • Montreal • Florida
1-877-731-1010
info@webbelectronicinc.com
www.webbelectronicinc.com