

Heavy-Duty HVAC for Severe-Duty Applications



Featuring the TDR5 roof mount unit



TDR5



Features

- Rooftop mount
- Heavy gauge stainless steel construction
- Uses environmentally friendly R134a refrigerant
- Available in 12 or 24 voltages

Weights & Dimensions

- Weight 220 lbs
99.8 kg
- Width 40.39 in
1,026 mm
- Height 10.55 in
268 mm
- Depth 39.22 in
996 mm



Technical Specifications

- Performance

Cooling 90 °F (32.2 °C)DB @ 70% RH

18,000 BTU/h
5.3 kW

Heating SAE J638 @ 18.2 LPM (4.8 GPM)

20,000 BTU/h
5.9 kW

- Air Flow

300-400 CFM
510-680 SCMh

- Current Draw

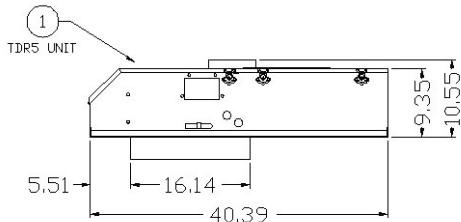
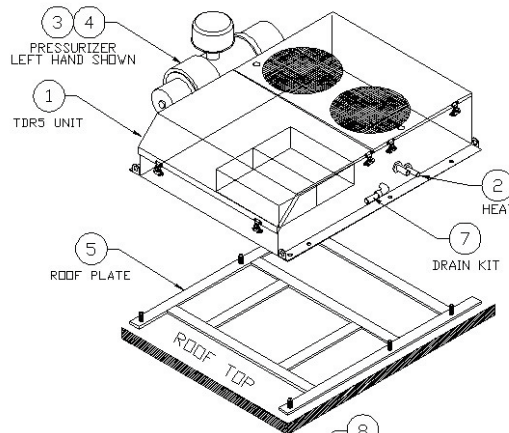
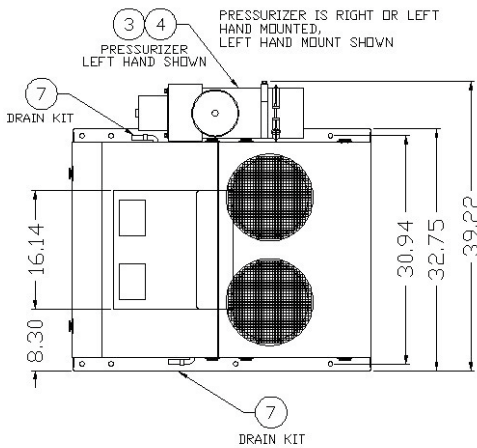
40 Amps @ 12 VDC
25 Amps @ 24 VDC

Warranty

- 1 year limited warranty on parts only

Applications

- Mining Equipment
- Heavy Industrial Equipment



Availability is subject to change without notice. Bergstrom reserves the right to change the design or specifications without notice and without any obligation or liability whatsoever. ©2012 rev/8/12

www.bergstrominc.com

2390 Blackhawk Road
Rockford, IL 61125
866.204.8570

BESM-S-TDR5-16R1-EN-B