



Weekday
Edition

Weekly Update



DATE: 5/21/20
TIME: 5:00 PM

Positive Cases for Neighboring Counties:

California:	
Modoc	0
Sierra	0
Trinity	1
Plumas	4
Tehama	2
Siskiyou	6
Shasta	34
Butte	25
California	84,057

Other:	
Washoe	1,305
US	1,528,235

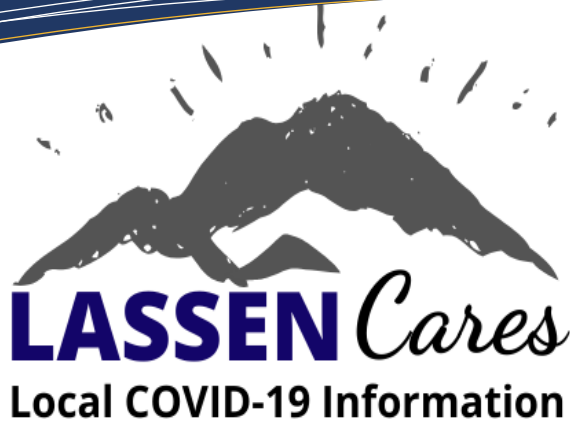
Incident Commanders:

Dean Growdon,
Lassen County
Sheriff

Barbara Longo,
Director of Health
and Social Services

Public Information Officer:

Richard Egan, CAO



Memorial Day Weekend: Recreation

Memorial Day weekend is Lassen County has usually been busy with fishing, hunting, and other forms of outdoor recreation. Due to the COVID-19 pandemic, some of these areas have made modifications or have closed certain areas. Be sure to check with the recreation area you would like to visit before leaving your home.

The Eagle Lake Marina and Campground will open tomorrow May 21st.

For a list of state parks that are open, please check <https://www.parks.ca.gov/parkindex>.

For a list of National Parks that are open, please check <https://www.nationalparks.org/explore-parks>.

To check availability and to make reservations at local campgrounds, please check <https://www.eaglelakerecreationarea.com/activities/camping/>.

Visitors to recreation areas need to adhere to the posted guidelines regarding social distancing. It is important to avoid crowded parking lots and park visitation sites.

Lassen County COVID-19 Counts:

Known Cases	0
Pending	480
Negative	193
Total	673

***Note: Numbers have increased in response to the Drive Thru Testing Clinic

We regret that Phase 2 of the State's California Resilience Plan does not include the following:

- Personal services such as nail salons, tattoo parlors, gyms, and fitness studios
- Entertainment venues: movie theaters, gaming, festivals, concert venues, live audience sports, nightclubs, theme parks, hotels (non-essential travel)
- Community Centers: pools, playgrounds, and picnic areas
- Higher Education
- Religious Services and Cultural Ceremonies



Health Informed



Lassen County
Public Health

Drive Thru Testing Update:

Update from the Susanville Drive Thru COVID-19 Testing Center at Lassen Community College

Results:

How many tests were administered at the testing clinic?

The Public Health Department held a drive thru testing site for COVID-19 at Lassen Community College. The first day was Monday, May 18th and the last day was yesterday, May 21th. The totals for each day are listed below. They administered total tests 435 tests in total.

If I got tested when, when will I get my results?

If you were tested at the clinic, you will receive your test results within 5 days. If you tested negative, you will receive an email. If you tested positive you will receive a phone call from your physician and Public Health.

What will happen with the results?

You will receive your results directly. The Public Health Department will also receive the status of your test. The numbers will be added to the COVID-19 County on the LassenCares website.

Testing in Westwood, Bieber, and Herlong:

When will the schedule be available?

The Public Health Department is working on finalizing the dates and times for testing in these areas.

Will there be flyers and other promotions before the event?

It is our hope to release information about the testing sites and the days they are testing at least a week in advance. Please keep an eye out at your local One Stop or LassenCares.org.

Frequently Asked Questions:

What is the purpose of the testing?

- To Provide a true picture of the level of COVID-19 cases in our county by Testing Asymptomatic Individuals
- Assist in moving from Phase 2 to Phase 3

Why Now?

- Responding to the Public's Request for Mass Testing
- More test kits available now, allowing Public Health to test asymptomatic people

Will My Information Be Shared?

- The information you provide will be kept confidential
- We will report test result numbers to the public, but not any personal information.

How Will My Results Be Returned to Me?

- We have to print a label that goes with your sample to the state lab

- If you are **negative**, you will receive an email
- If you are **positive**, you will receive a call from a physician.
- A member of Public Health will call to determine if you require additional services

Do I Need to Put in My Insurance Information?

- Only if you want to, but you will not be billed
- You could select no insurance and move forward

What If I am Having Trouble Registering Online?

Public Health staff available to help you register on site, but it will take more time.

What do you need to bring?

- Photo ID or Work ID
- Registration Email

Lassen County Public Health Department

COVID-19 Drive Thru Testing Center Update

as of May 20, 2020

189 Previous Tests

191 Monday, May 18th

168 Tuesday, May 19th

0 Wednesday, May 20th

548 Total Tests

Demonstration video links attached:

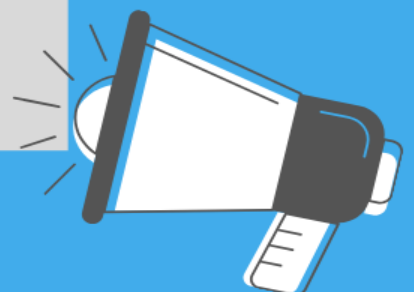
- The Public Information Team goes through the testing
- Public Health Demonstrates the testing
- Project Baseline's 5 Tips for Testing



Health Informed



Lassen County Public Health

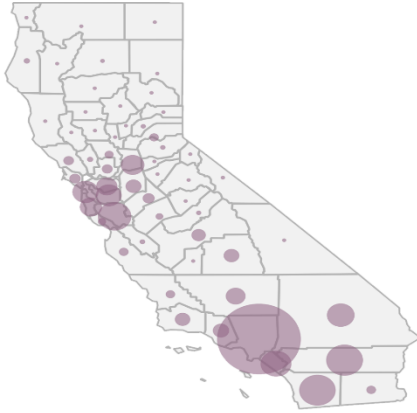


Lassen County appreciates your individual efforts to assist with reopening

Lassen County Stay Health Informed

California COVID-19 By The Numbers

May 20, 2020
Numbers as of May 19, 2020



For county-level data:
data.chhs.ca.gov

CALIFORNIA COVID-19 SPREAD

84,057

Total Cases

Ages of Confirmed Cases

- 0-17: **3,657**
- 18-49: **42,591**
- 50-64: **20,468**
- 65+: **17,232**
- Unknown/Missing: **109**

Gender of Confirmed Cases

- Female: **41,226**
- Male: **42,336**
- Unknown/Missing: **495**

Hospitalizations

Confirmed COVID-19
3,047/1,068
Hospitalized/in ICU

Suspected COVID-19
1,634/277
Hospitalized/in ICU

3,436
Fatalities

Your actions **save lives.**

covid19.ca.gov



Local Resources:

LassenCares.org:

Resources

Food Resources

Business Resources

School Resources

Senior Resources

Child and Family Activities

Economic Relief Programs

Roadmap to Recovery

Frequently Asked Questions

State Resources:

[California Department of](http://California Department of Public Health)

Public Health

Cdph.ca.gov/covid19

California State

Covid19.ca.gov

Local Plans:

LassenCares.org :

(Front Page)

Lassen County Incident
Action Plan

Lassen County Roadmap
to Recovery



Survey Link:

<https://www.surveymonkey.com/r/lcreopening>.

Incident Action Plan:

The Lassen County Incident Command released the Incident Action Plan to the public. This document is updated based upon the evolving circumstances. To review the plan, please visit:

https://m.box.com/shared_item/https%3A%2F%2Fcalfire.box.com%2Fs%2Fwj6bjiyarc7b3owctz1drwlnewtkwkkq/browse/107933501748



Frequently Asked Questions to the Call Center:

Q: Can sports teams hold a fundraiser carwash?

A: The guidances for the State do not permit carwashes at this time.

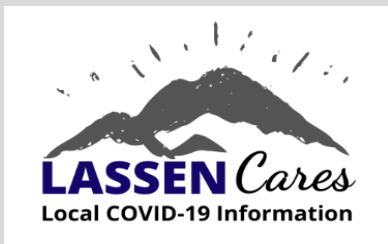
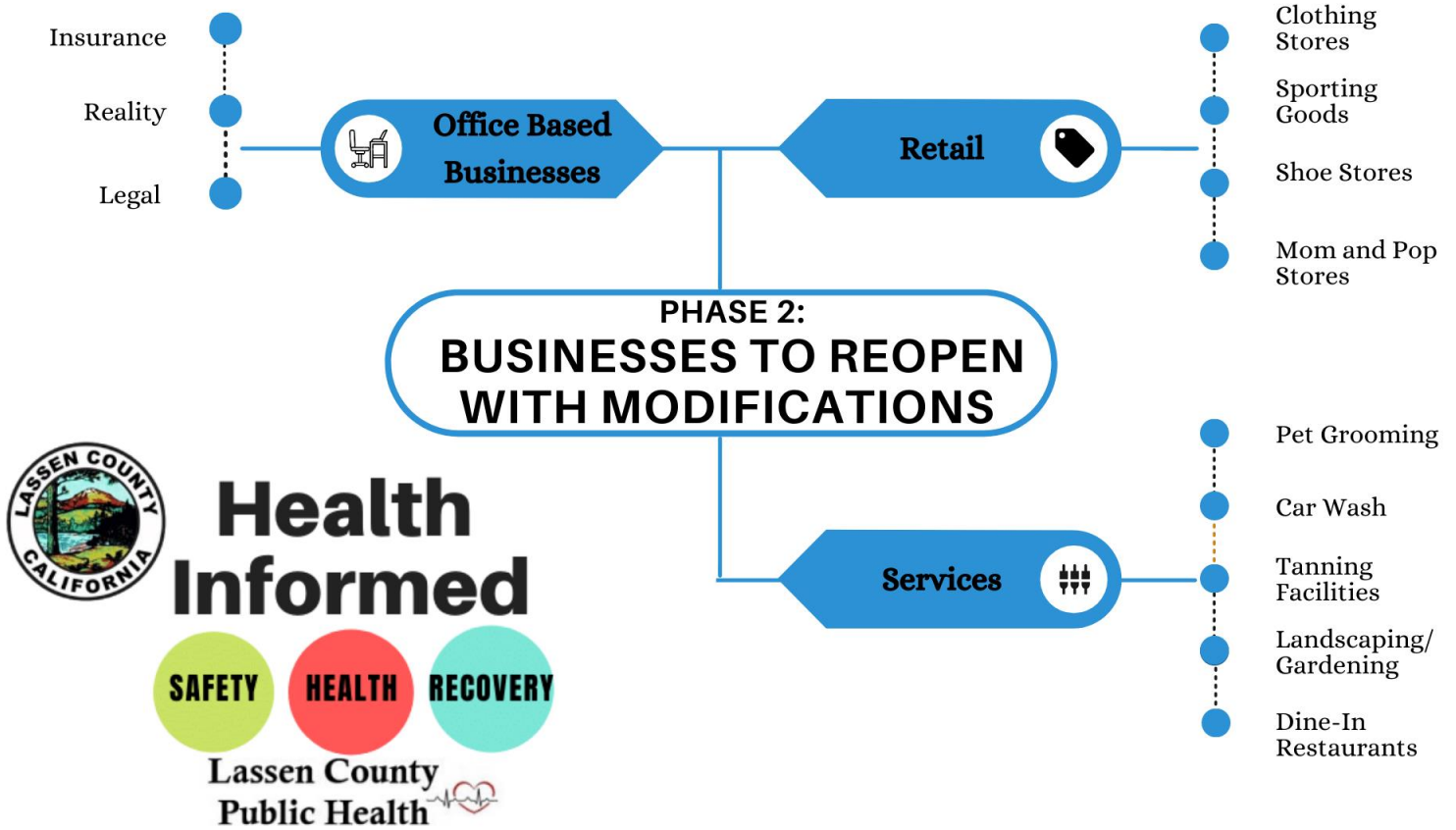
Q: Are there any campgrounds opened for the holiday?

A: Eagle Lake Campground and Marine are open as of today. For a list of closures please visit:

<https://www.susanvillestuff.com/forest-service-extending-most-covid-19-closures-through-june-11th/>

Q: What will the high school do as far as graduation?

A: They are holding a drive thru graduation at 6:00 pm on June 5th, 2020. LassenCares would like to congratulate the students and wish them luck as they move to the next phase of their lives. This isnt the ideal situation for anyone (students, parents, community supporters) but we know the community will support the students and the school on whatever they decide.



Update:

Phase 3 and Phase 4

The County is preparing for Phase 3 and Phase 4. We are gathering data, providing testing to asymptomatic individuals, and approving safety plans for businesses as they reopen. We hope to have more information for all businesses that fall under these phases, such as salons, outdoor sports, etc., in the next couple of days.

The Lassen County
COVID-19
Call Center
 Monday – Friday
 8:00 am - 5:00 pm
 (530) 251-8100

Business Readiness Survey: Phase 2B

With Phase 2B being implemented, Lassen County residents may have noticed some businesses reopening. The Public Health Department has received 133 responses from local businesses. We want to thank those businesses for working with the department to make sure they are reopening safely. It is important to check with individual businesses to see their modifications and to adhere to their requests. These businesses are doing what they can to serve the community, so following individual business guidelines will help the business in their endeavors to follow what has been set forth by the state requirements.

In this difficult time it can be easy to get upset about businesses operating in a different manner than they have in the past, but it is important to do our part as patrons to support them as we continue to enter into different phases of the Recovery Plan. Although many businesses are choosing to continue curb-side pick up or delivery, there are other ways businesses are adapting. Here are some changes you may notice in business operations:

- **Reduced number of seating in dining establishments**
- **Modified hours of operation**
- **Call ahead ordering.**