

# *Angel Wings Construction Cleaning*

With You From Frame To Finish

*(705) 818 7661*

[www.angelwingscleaningservices.ca](http://www.angelwingscleaningservices.ca)  
[angelwingscleaningservices@outlook.com](mailto:angelwingscleaningservices@outlook.com)



[angelwingscleaningservices.ca](http://angelwingscleaningservices.ca)

# Angel Wings



## Cleaning Services

www.angelwingscleaningservices.ca  
(705) 818 7661

### Post Construction services are available for Residential, Commercial & Industrial customers.

Angel Wings provides all cleaning materials & equipment needed to get your site professionally cleaned and on time for turn over day. All our staff are fully equipped with PPE. As a business are fully aware that time delays equals money and can damage a reputation.

We are fully capable of meeting deadlines!



General Detail Clean

- Sweep all open areas
- Clean all windows (interior only)
- Remove all paint, glue, stickers from glass
- Clean and remove residue from all window tracks
- Clean all window sills and frames
- Clean all bathtubs & surrounds, showers, sinks and toilets
- Wipe down cabinets and vanities
- Clean inside cabinets and drawers
- Remove all dust from baseboards and all woodwork
- Clean doors and frames

Once the general clean has been completed it will allow you opportunity to assess if any touch ups or repairs are required.



Detail / Final Clean

- Wash all windows (interior only)
- Clean all woodwork including doors, frames, baseboards etc.
- Clean all bathroom vanities, mirrors, toilets, showers etc.
- Clean inside / outside of all cabinets, shelves, drawers & countertops
- Remove all and any labels / stickers from fixtures
- Clean light fixtures and switch plates
- Dust all appliances & polish stainless steel appliances
- Sweep and wash floors
- Vacuum all carpeted areas

After touch ups are completed a detailed clean is performed.



Final Touch Up

- Clean toilets, bathtubs, showers & sinks
- Wipe down countertops, vanities, cabinets, windowsills & woodwork
- Re-polish stainless steel appliances
- Light dust in general
- Sweep & wash floors, vacuum carpeted areas where necessary
- Touch up windows & mirrors

Prior to turnover the building will be 100% clean ready for your client.

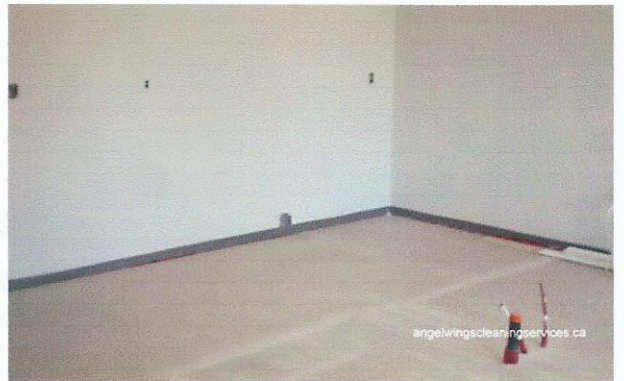
*At all times there is at least one owner or supervisor on site.*



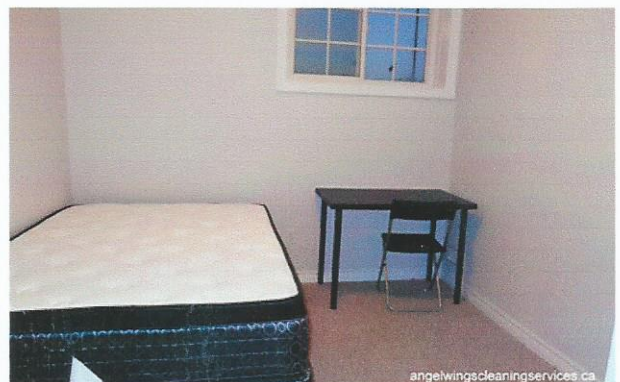
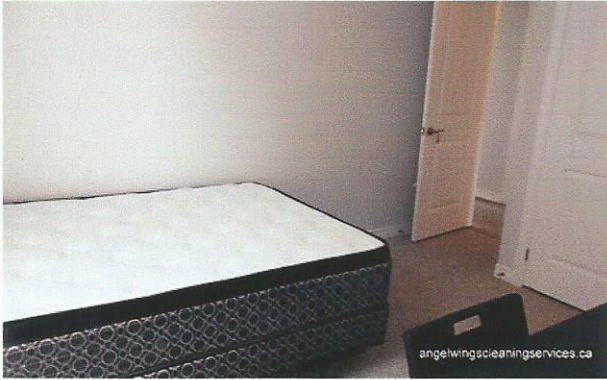
[angelwingscleaningservices.ca](http://angelwingscleaningservices.ca)



[angelwingscleaningservices.ca](http://angelwingscleaningservices.ca)







SYDENHAM WELLS



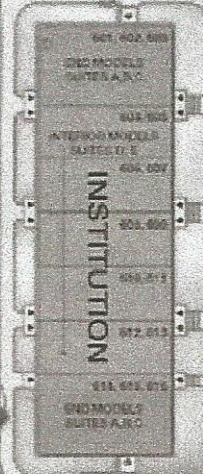
EXISTING RESIDENTIAL

LOWER LEVEL  
WALK OUT TO GRADE



CAMPUS

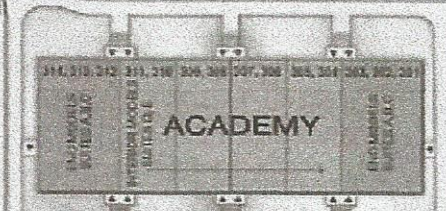
LOWER LEVEL  
WALK OUT TO GRADE



INSTITUTION

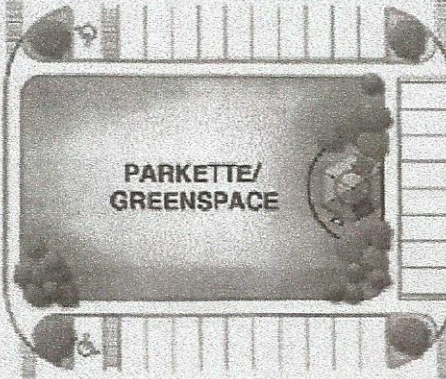
MANAGEMENT OFFICE

GARAGES

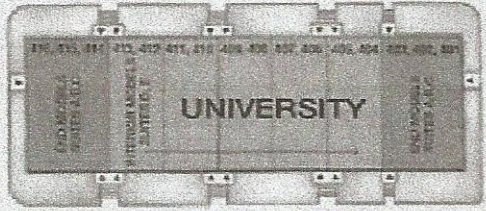


ACADEMY

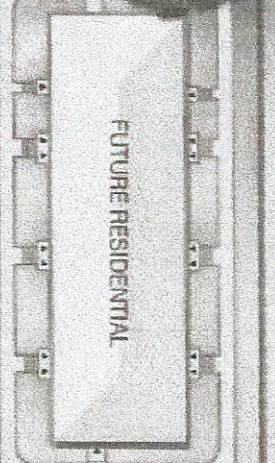
GARAGES



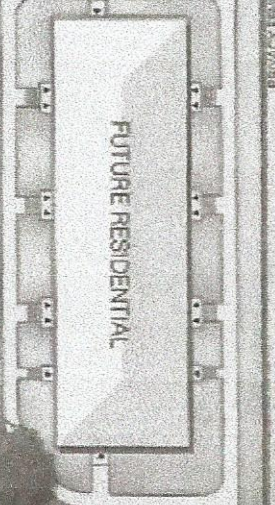
PARKETTE/  
GREENSPACE



UNIVERSITY



FUTURE RESIDENTIAL



FUTURE RESIDENTIAL

PROPERTY FENCE

Site plan is artist's concept. Lot dimensions are approximate and depend on final survey. Landscape areas and plantings are concepts only and may vary from finished landscape. See sales representative for more information. E. & O. E.



SchoolHouse  
STUDENT LIVING

siteplan

END MODELS: ONE LEVEL SUITES  
INTERIOR MODELS: 2-STORY SUITES











# City of



# Orillia

500 GILL STREET,  
ORILLIA, ONTARIO  
L3V 4L1

**FIRE DEPARTMENT**

TELEPHONE  
(705) 325-5201  
FACSIMILE  
(705) 325-5039

January 26, 2015

Re: Angel Wings Cleaning Services

To Whom It May Concern:

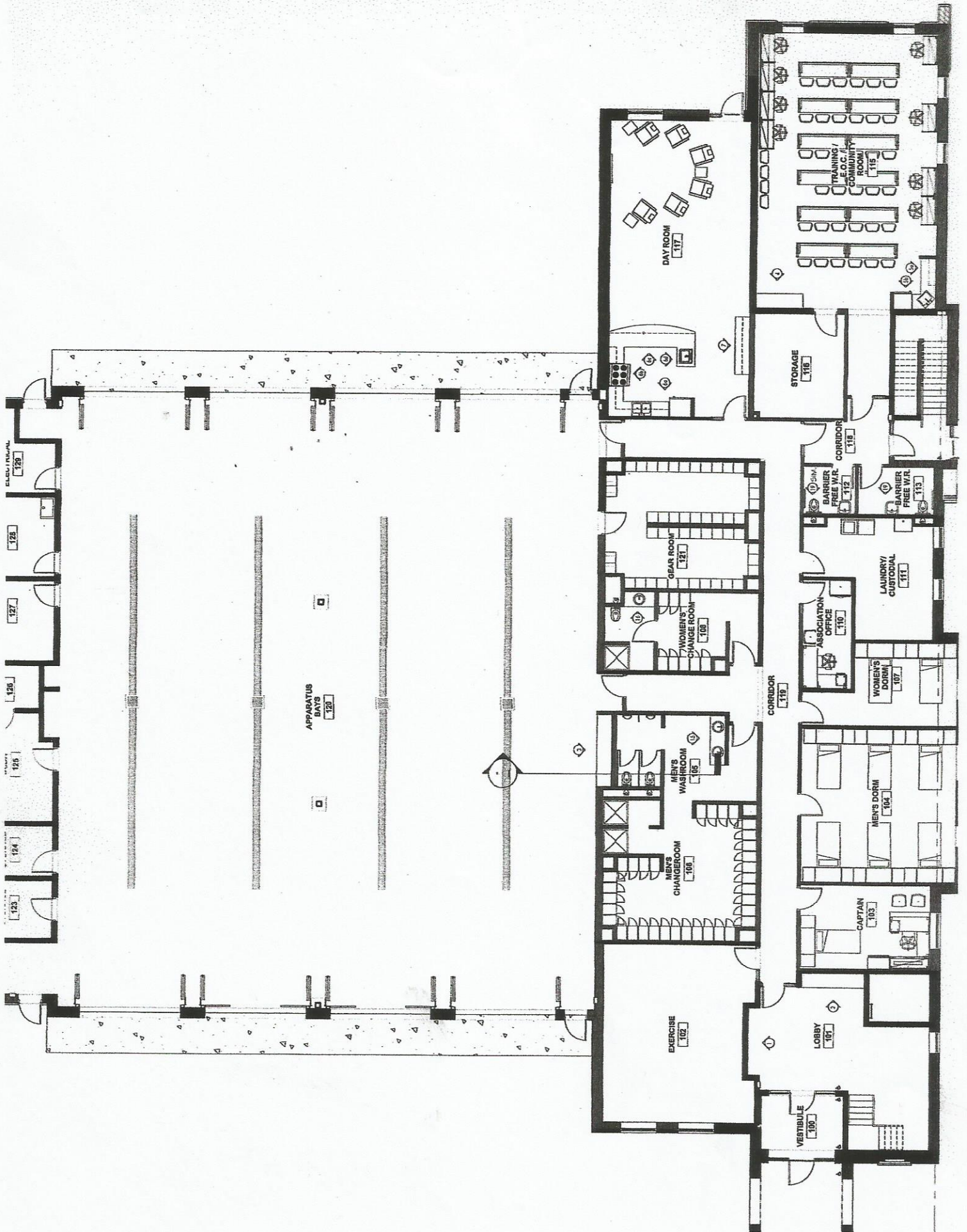
On November 27, 2014, the Orillia Fire Department had the grand opening of its new fire hall headquarters at 500 Gill Street, Orillia, Ontario. This beautiful new facility was constructed in just over a year and the project was managed by Greystone Construction of Huntsville.

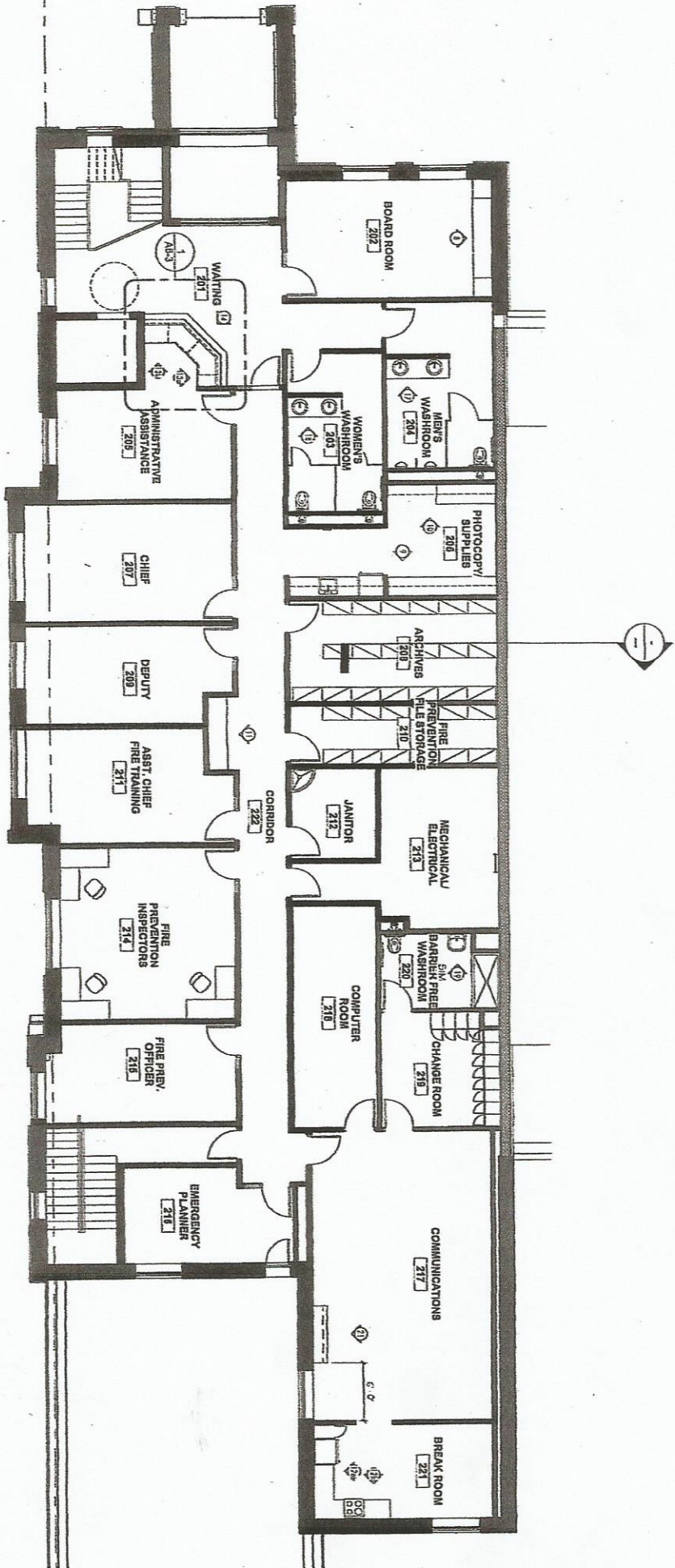
Prior to the grand opening, Greystone arranged for Angel Wings Cleaning Services to clean the building in preparation of the grand opening that was attended by over 600 dignitaries and members of the community. Shelly Clarke and her staff were cleaning for several days, working around contractors finishing the work and Fire Department staff who were trying to get moved into the building. Shelly was always pleasant, helpful and professional, and she made sure everything was in good order for the opening.

I am pleased to write this letter as a recommendation for her professional cleaning services.

Sincerely,

Ralph Dominelli  
Fire Chief





SECOND FLOOR INTERIOR REFERENCE PLAN



[angelwingscleaningservices.ca](http://angelwingscleaningservices.ca)



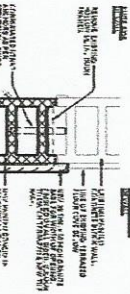
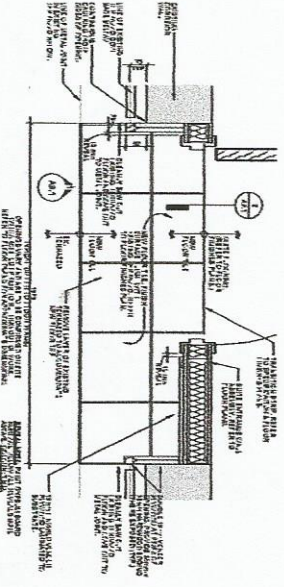
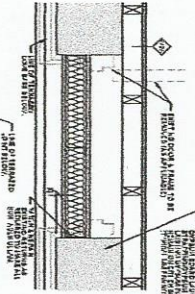
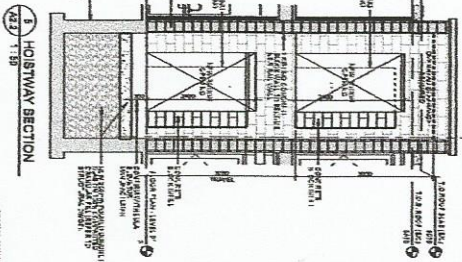
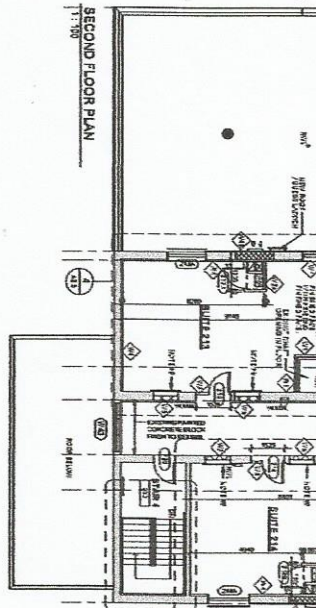
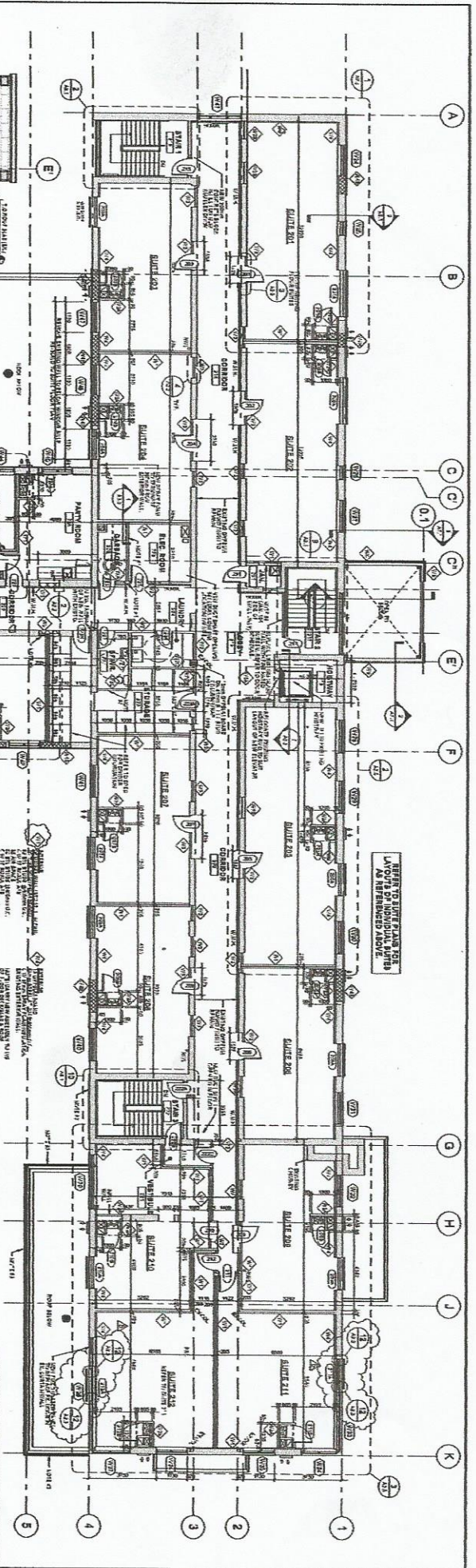
[angelwingscleaningservices.ca](http://angelwingscleaningservices.ca)











- WALL TYPES**
- 1. 1/2" GYPSUM BOARD ON 2" X 4" STUDS
  - 2. 5/8" GYPSUM BOARD ON 2" X 4" STUDS
  - 3. 1" GYPSUM BOARD ON 2" X 4" STUDS
  - 4. 1 1/2" GYPSUM BOARD ON 2" X 4" STUDS
  - 5. 2" GYPSUM BOARD ON 2" X 4" STUDS
  - 6. 1/2" GYPSUM BOARD ON 2" X 4" STUDS WITH SOUND BATT INSULATION
  - 7. 5/8" GYPSUM BOARD ON 2" X 4" STUDS WITH SOUND BATT INSULATION
  - 8. 1" GYPSUM BOARD ON 2" X 4" STUDS WITH SOUND BATT INSULATION
  - 9. 1 1/2" GYPSUM BOARD ON 2" X 4" STUDS WITH SOUND BATT INSULATION
  - 10. 2" GYPSUM BOARD ON 2" X 4" STUDS WITH SOUND BATT INSULATION
  - 11. 1/2" GYPSUM BOARD ON 2" X 4" STUDS WITH SOUND BATT INSULATION AND FIBERGLASS INSULATION
  - 12. 5/8" GYPSUM BOARD ON 2" X 4" STUDS WITH SOUND BATT INSULATION AND FIBERGLASS INSULATION
  - 13. 1" GYPSUM BOARD ON 2" X 4" STUDS WITH SOUND BATT INSULATION AND FIBERGLASS INSULATION
  - 14. 1 1/2" GYPSUM BOARD ON 2" X 4" STUDS WITH SOUND BATT INSULATION AND FIBERGLASS INSULATION
  - 15. 2" GYPSUM BOARD ON 2" X 4" STUDS WITH SOUND BATT INSULATION AND FIBERGLASS INSULATION

**FLOOR PLAN LEGEND**

1. 1/2" GYPSUM BOARD ON 2" X 4" STUDS	16. 1/2" GYPSUM BOARD ON 2" X 4" STUDS WITH SOUND BATT INSULATION AND FIBERGLASS INSULATION
2. 5/8" GYPSUM BOARD ON 2" X 4" STUDS	17. 5/8" GYPSUM BOARD ON 2" X 4" STUDS WITH SOUND BATT INSULATION AND FIBERGLASS INSULATION
3. 1" GYPSUM BOARD ON 2" X 4" STUDS	18. 1" GYPSUM BOARD ON 2" X 4" STUDS WITH SOUND BATT INSULATION AND FIBERGLASS INSULATION
4. 1 1/2" GYPSUM BOARD ON 2" X 4" STUDS	19. 1 1/2" GYPSUM BOARD ON 2" X 4" STUDS WITH SOUND BATT INSULATION AND FIBERGLASS INSULATION
5. 2" GYPSUM BOARD ON 2" X 4" STUDS	20. 2" GYPSUM BOARD ON 2" X 4" STUDS WITH SOUND BATT INSULATION AND FIBERGLASS INSULATION
6. 1/2" GYPSUM BOARD ON 2" X 4" STUDS WITH SOUND BATT INSULATION	21. 5/8" GYPSUM BOARD ON 2" X 4" STUDS WITH SOUND BATT INSULATION
7. 5/8" GYPSUM BOARD ON 2" X 4" STUDS WITH SOUND BATT INSULATION	22. 1" GYPSUM BOARD ON 2" X 4" STUDS WITH SOUND BATT INSULATION
8. 1" GYPSUM BOARD ON 2" X 4" STUDS WITH SOUND BATT INSULATION	23. 1 1/2" GYPSUM BOARD ON 2" X 4" STUDS WITH SOUND BATT INSULATION
9. 1 1/2" GYPSUM BOARD ON 2" X 4" STUDS WITH SOUND BATT INSULATION	24. 2" GYPSUM BOARD ON 2" X 4" STUDS WITH SOUND BATT INSULATION
10. 2" GYPSUM BOARD ON 2" X 4" STUDS WITH SOUND BATT INSULATION	25. 1/2" GYPSUM BOARD ON 2" X 4" STUDS WITH SOUND BATT INSULATION AND FIBERGLASS INSULATION
11. 1/2" GYPSUM BOARD ON 2" X 4" STUDS WITH SOUND BATT INSULATION AND FIBERGLASS INSULATION	26. 5/8" GYPSUM BOARD ON 2" X 4" STUDS WITH SOUND BATT INSULATION AND FIBERGLASS INSULATION
12. 5/8" GYPSUM BOARD ON 2" X 4" STUDS WITH SOUND BATT INSULATION AND FIBERGLASS INSULATION	27. 1" GYPSUM BOARD ON 2" X 4" STUDS WITH SOUND BATT INSULATION AND FIBERGLASS INSULATION
13. 1" GYPSUM BOARD ON 2" X 4" STUDS WITH SOUND BATT INSULATION AND FIBERGLASS INSULATION	28. 1 1/2" GYPSUM BOARD ON 2" X 4" STUDS WITH SOUND BATT INSULATION AND FIBERGLASS INSULATION
14. 1 1/2" GYPSUM BOARD ON 2" X 4" STUDS WITH SOUND BATT INSULATION AND FIBERGLASS INSULATION	29. 2" GYPSUM BOARD ON 2" X 4" STUDS WITH SOUND BATT INSULATION AND FIBERGLASS INSULATION
15. 2" GYPSUM BOARD ON 2" X 4" STUDS WITH SOUND BATT INSULATION AND FIBERGLASS INSULATION	30. 1/2" GYPSUM BOARD ON 2" X 4" STUDS WITH SOUND BATT INSULATION AND FIBERGLASS INSULATION AND FIBERGLASS INSULATION

- FLOOR PLAN NOTES**
1. ALL WALLS TO BE FINISHED WITH 1/2" GYPSUM BOARD ON 2" X 4" STUDS.
  2. ALL CEILING TO BE FINISHED WITH 5/8" GYPSUM BOARD ON 2" X 4" STUDS.
  3. ALL FLOORS TO BE FINISHED WITH 1" GYPSUM BOARD ON 2" X 4" STUDS.
  4. ALL CORNERS TO BE FINISHED WITH 1" GYPSUM BOARD ON 2" X 4" STUDS.
  5. ALL DOORS TO BE FINISHED WITH 1" GYPSUM BOARD ON 2" X 4" STUDS.
  6. ALL WINDOWS TO BE FINISHED WITH 1" GYPSUM BOARD ON 2" X 4" STUDS.
  7. ALL PARTITIONS TO BE FINISHED WITH 1" GYPSUM BOARD ON 2" X 4" STUDS.
  8. ALL STAIRS TO BE FINISHED WITH 1" GYPSUM BOARD ON 2" X 4" STUDS.
  9. ALL ELEVATORS TO BE FINISHED WITH 1" GYPSUM BOARD ON 2" X 4" STUDS.
  10. ALL MECHANICAL ROOMS TO BE FINISHED WITH 1" GYPSUM BOARD ON 2" X 4" STUDS.
  11. ALL ELECTRICAL ROOMS TO BE FINISHED WITH 1" GYPSUM BOARD ON 2" X 4" STUDS.
  12. ALL TELEPHONE ROOMS TO BE FINISHED WITH 1" GYPSUM BOARD ON 2" X 4" STUDS.
  13. ALL JANETRIES TO BE FINISHED WITH 1" GYPSUM BOARD ON 2" X 4" STUDS.
  14. ALL RESTROOMS TO BE FINISHED WITH 1" GYPSUM BOARD ON 2" X 4" STUDS.
  15. ALL STORAGE ROOMS TO BE FINISHED WITH 1" GYPSUM BOARD ON 2" X 4" STUDS.
  16. ALL OFFICES TO BE FINISHED WITH 1" GYPSUM BOARD ON 2" X 4" STUDS.
  17. ALL CONFERENCE ROOMS TO BE FINISHED WITH 1" GYPSUM BOARD ON 2" X 4" STUDS.
  18. ALL BOARD ROOMS TO BE FINISHED WITH 1" GYPSUM BOARD ON 2" X 4" STUDS.
  19. ALL WAITING AREAS TO BE FINISHED WITH 1" GYPSUM BOARD ON 2" X 4" STUDS.
  20. ALL RECEPTION AREAS TO BE FINISHED WITH 1" GYPSUM BOARD ON 2" X 4" STUDS.
  21. ALL LOBBIES TO BE FINISHED WITH 1" GYPSUM BOARD ON 2" X 4" STUDS.
  22. ALL HALLWAYS TO BE FINISHED WITH 1" GYPSUM BOARD ON 2" X 4" STUDS.
  23. ALL STAIRWELLS TO BE FINISHED WITH 1" GYPSUM BOARD ON 2" X 4" STUDS.
  24. ALL ELEVATOR LOBBIES TO BE FINISHED WITH 1" GYPSUM BOARD ON 2" X 4" STUDS.
  25. ALL MECHANICAL SHAFTS TO BE FINISHED WITH 1" GYPSUM BOARD ON 2" X 4" STUDS.
  26. ALL ELECTRICAL SHAFTS TO BE FINISHED WITH 1" GYPSUM BOARD ON 2" X 4" STUDS.
  27. ALL TELEPHONE SHAFTS TO BE FINISHED WITH 1" GYPSUM BOARD ON 2" X 4" STUDS.
  28. ALL JANETRY SHAFTS TO BE FINISHED WITH 1" GYPSUM BOARD ON 2" X 4" STUDS.
  29. ALL RESTROOM SHAFTS TO BE FINISHED WITH 1" GYPSUM BOARD ON 2" X 4" STUDS.
  30. ALL STORAGE SHAFTS TO BE FINISHED WITH 1" GYPSUM BOARD ON 2" X 4" STUDS.
  31. ALL OFFICE SHAFTS TO BE FINISHED WITH 1" GYPSUM BOARD ON 2" X 4" STUDS.
  32. ALL CONFERENCE SHAFTS TO BE FINISHED WITH 1" GYPSUM BOARD ON 2" X 4" STUDS.
  33. ALL BOARD ROOM SHAFTS TO BE FINISHED WITH 1" GYPSUM BOARD ON 2" X 4" STUDS.
  34. ALL WAITING AREA SHAFTS TO BE FINISHED WITH 1" GYPSUM BOARD ON 2" X 4" STUDS.
  35. ALL RECEPTION SHAFTS TO BE FINISHED WITH 1" GYPSUM BOARD ON 2" X 4" STUDS.
  36. ALL LOBBY SHAFTS TO BE FINISHED WITH 1" GYPSUM BOARD ON 2" X 4" STUDS.

**DICKINSON + HICKS ARCHITECTS, P.C.**  
 48 N.W. STREET, DANVER, MA, 01920  
 TEL: (978) 251-0812 FAX: (978) 251-8192

**PROJECT:** RENOVATIONS TO SHELDHAL HOSPITAL, CHVANC BLDG. HALL

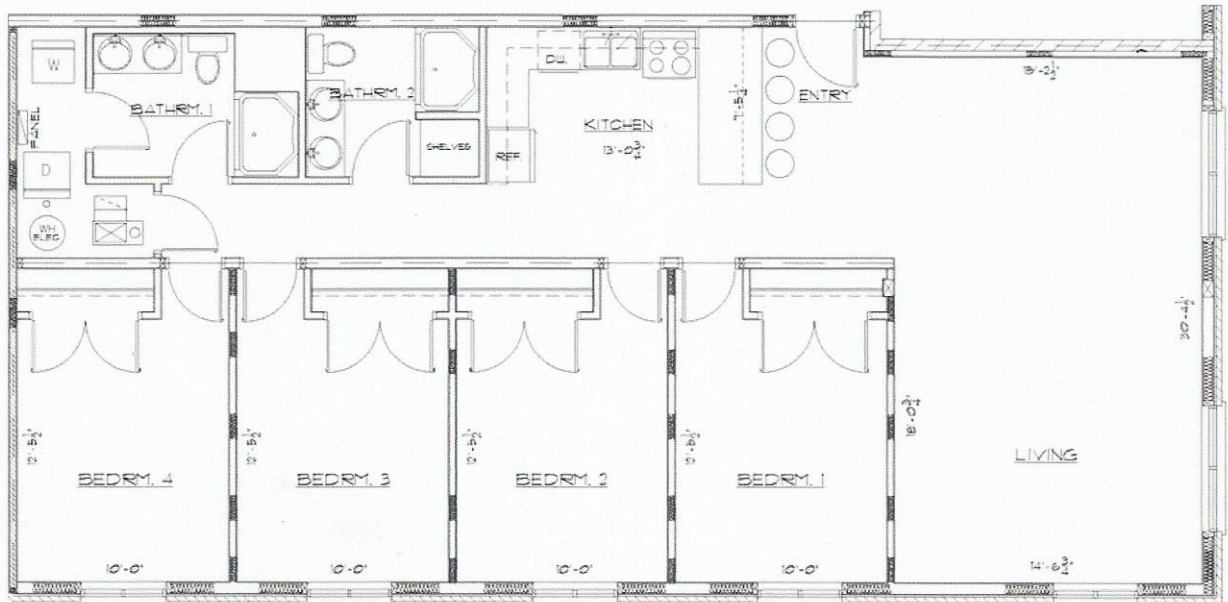
**SECOND FLOOR PLAN**

DATE:	10/10/00
SCALE:	1/8" = 1'-0"
PROJECT:	CHVANC BLDG.
NO.:	002
DATE:	10/10/00
BY:	AS/MS/AS
CHKD BY:	AS/MS/AS
APP'D BY:	AS/MS/AS

**A2.2**



## Orillia Residence SUITE LAYOUT







# *Angel Wings Cleaning Services*

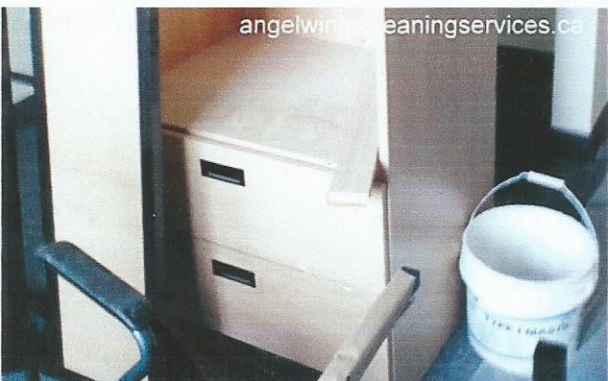
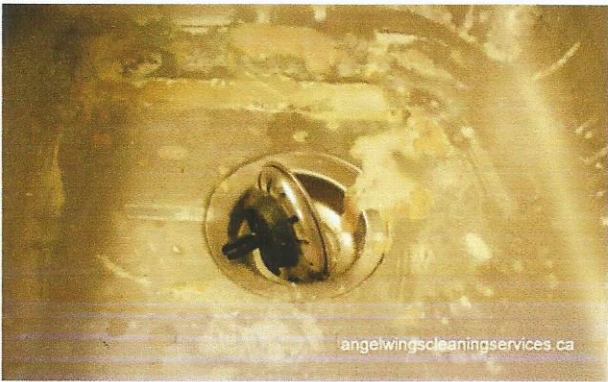
*Post Construction / Move In/Out*

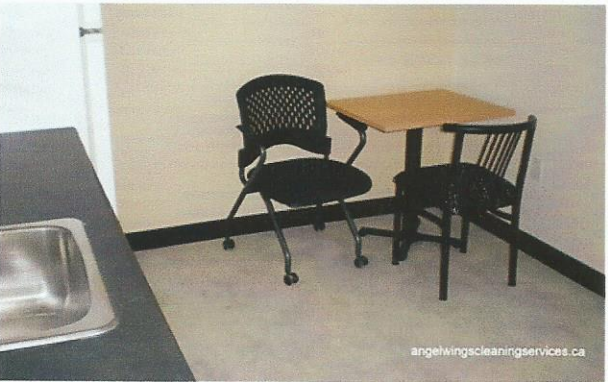
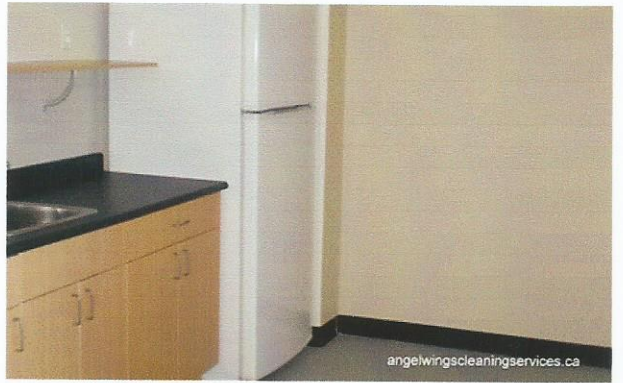
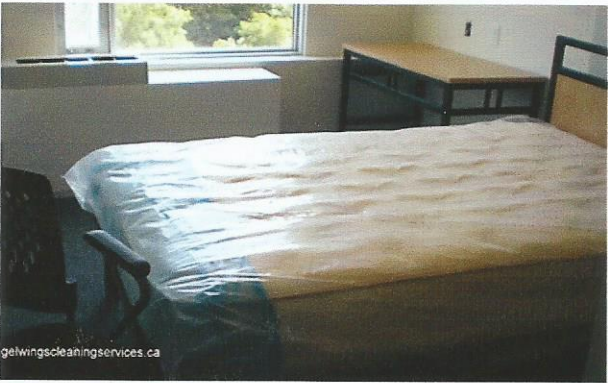
*Residential / Office*

*(705) 818 7661*

*www.angelwingscleaningservices.ca*

*angelwingscleaningservices@outlook.com*



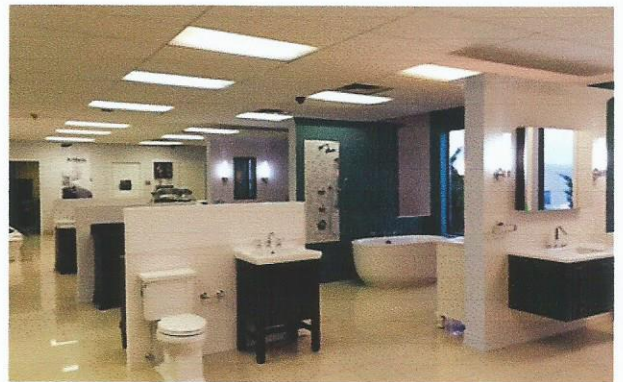




*Angel Wings  
Construction Painting*

*(705) 818 7661*

[www.angelwingscleaningservices.ca](http://www.angelwingscleaningservices.ca)  
[angelwingscleaningservices@outlook.com](mailto:angelwingscleaningservices@outlook.com)



## *Angel Wings*



### *Cleaning Services*

www.angelwingscleaningservices.ca  
(705) 818 7661

### *Services Provided*

#### **Cleaning from Frame to Finish**

Once framing is up prior to insulation we begin the clean up process

#### **Painting**

2 coats of quality Drywall Primer & 2 coats of quality durable paint

#### **Exterior Debris Clean Up**

Small nasty debris such as nails, screws etc, general garbage to enhance the overall site appearance

#### **Management Services**

Please enquire

All services we provide are documented & photographed.  
Photographs are sent to the client on a regular basis.