



# Bringing better visibility and clarity to all team members

Bouygues UK has used Revizto for commercial, educational, medical/healthcare, residential, stadium, museum and cultural construction projects.

Bouygues UK, which has been operating in the UK for over 20 years, has progressively grown its business across different construction sectors, with a recent focus on infrastructure. Coupled with the activities of its sister companies, Colas UK and Colas Rail, Bouygues' operations in the UK have grown to over £1.5 billion in sales, with a workforce of over 6,000 employees.

Ian Massey, the Regional BIM Manager for Bouygues UK, offers an insight into the company's inner workings and how Revizto has been incorporated into the team's workflow. The extensive toolset provided by Revizto has enabled Bouygues UK to use the software across the software across the design, pre-con, construction and facilities management phases of the building process.

## Challenge

Ian's team encountered various pain points before implementing Revizto 5:

- Lack of a BIM collaborative environment for non-BIM team members
- Issue consolidation and reporting
- Issues with combining 2D and 3D viewing/interaction

## Solution

Following the implementation of Revizto, Ian identified 5 significant points of value:

- Ability to consolidate milestone 'red pen' drawing comments in one location
- Full audit trail of issues from the point they were identified all the way through to resolution
- Incorporation into site change tracking process

“

My favorite parts of the Revizto package include consolidating issue management into a single location. This includes Design team meeting actions, clash detection, design queries and coordination issues from builders work to Fire stopping are managed in a single location, visible to all team members and a full audit trail is captured until resolution.



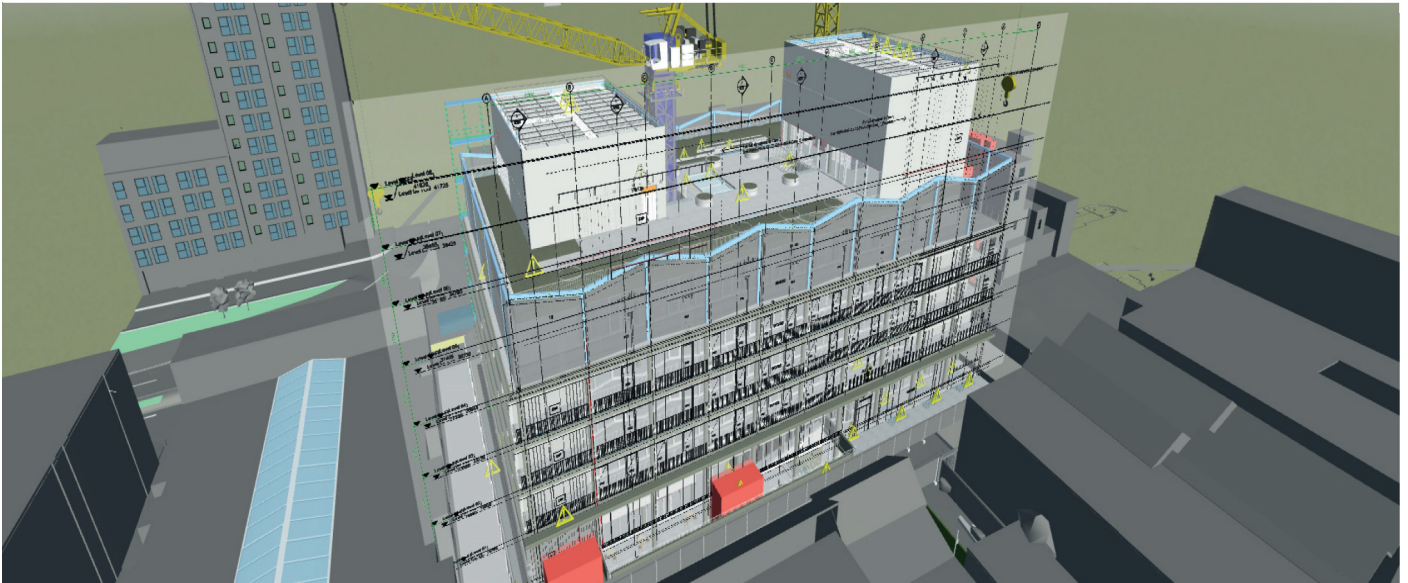
**Ian Massey**  
Regional BIM  
Manager

”

## Seamless communication; less time spent unearthing issues

Construction processes require utmost precision. Slight deviations from the initial plans can cause teams to miss timelines and overshoot budgets. Revizto helps to eliminate human error and enable teams to stay on track so that everything goes according to plan. The integrated collaboration platform gets all team members on the same page at an earlier stage during projects. It helps to create streamlined and trackable workflows, delivering the perfect framework for smoother project execution from beginning to end.

Revizto also saves significant time which would otherwise be spent fixing unnecessary issues, and guarantees clear communication between various departments. According to Ian, Revizto offers exceptional support.



Ian agrees that Revizto has helped connect the entire team seamlessly from the beginning of the project and therefore streamlining the design/construction process. Eliminating misunderstanding and time/effort of searching through emails/external documentation to find discussion topics/actions and therefore ensuring the resolution of any design issues before site work commenced.

Ian has also noted Revizto has assisted their BIM coordinators with model federation and clash detection by eliminating the time/effort spend downloading/combining the BIM models as automated BIM model upload to Revizto can be utilised.

“

Revizto has empowered all my team, from Designers, planners, QS's, to supply chain and Construction Managers by enabling them to collaborate in a single environment for the first time on our projects, whether they are working from home, the office or the site. It offers better visibility, clarity and collaboration for all team members.



**Ian Massey**  
Regional BIM  
Manager

”

For more information and to request a demo, visit [revizto.com](https://revizto.com)