



August, 2017

THE Oil Can



Volume XI Issue 8



Division 7 Officers

Superintendent: **Bob Shreve**
827 Quailwood Ct
513 398-1355
Mason, OH 45040
bshreve@fuse.net

Asst. Super: **John Shields**
8520 Indian Hill Rd.
513 561-8691
Cincinnati, OH 45243
qengineers@aol.com

Secretary: **Bruce Knapp**
118 Cliff Rd.
513 941-2713
N. Bend, OH 45052
bruce_knapp@roadrunner.com

Treasurer: **Frank Koch**
4769 Silverwood Dr.
513 732-6208
Batavia, Oh 45103
fjkoch@hotmail.com

Trustees

Bob Adams (South) 859 384-0369
Mike Brestel (West) 513 661-2141
John Burchnall (North) 513 860-3852
Rick Crumrine 513 231-5328
Roy Hord 513 777-5337
Merlyn Jarman 812 539-3232
Randy Kerka 513 378-8108
Jim MacKnight (East) 513 733-1246
Dave Read 513 398-7323
Peter Weiglin 513 947-1422
Dave Puthoff 513 742-3227

Committee Chairs

Achieve. Prog. Frank Koch 513 732-6208
Car Projects Jim MacKnight 513 733-1246
Comm. Service Jim MacKnight 513 733-1246
Company Store Paul Musselman 859 384-2472
Contests Brad Jonas 513 755-3795
Division 7 Booth Brad Bove 513 227-7527
Excursions John Burchnall 513 860-3852
Merlyn Jarman 812 539-3232
Fall Show Rick Crumrine 513 231-5328
Flea Market Peter Weiglin 513 947-1422
Layout Ops. Rick Stern 513 729-1054
Membership Peter Weiglin 513 947-1422
Modelers Aid Pat Homan 513 861-2057
Monthly Raffle Russ Poynter 513 563-9370
Oil Can Editor Dave Puthoff 513 742-3227
Publicity Randy Kerka 513 378-8108
Spcl. Projects Dick White 513 829-8510
Video Library Kevin Orcutt 513 934-4096
Web Master John Burchnall 513 860-3852

Mid Central Region Officers

Pres. **Steve Kaplan**
president@midcentral-region-nmra.org

V.Pres. **Michael Hohn**
vp@midcentral-region-nmra.org

Secr. **Art Bumpus**
secretary@midcentral-region-nmra.org

Treas. **Jerry Doyle**
treasurer@midcentral-region-nmra.org

The Editors Corner:

Dave Puthoff

Have you ever thought about becoming a Master Model Railroader?

Many Division 7 members have modeling skills that are worthy of their attaining Master Model Railroader (MMR) status. Frank Koch surprised me when he judged my layout for an Achievement Award for Scenery when he visited a few months ago. Many of us would easily qualify for one or more of the Achievement Awards that count toward MMR status — just by filling out some paperwork!

Requirements for all the MMR categories are spelled out on the NMRA website <https://www.nmra.org/>

If you have a photo, or a useful tip, or maybe just a useful website that you would like to share, the Oilcan is an opportunity to share it with your fellow model railroaders.
Email it to editor@cincv-div7.org.

Dave

Contents:

- | | |
|----------------------------------|---|
| 3 - Headlights | 12 - Div. 7 Fall Train Show |
| 4 - 1987 Div. 7 Train Show | 13 - 2018 Cincinnati Express |
| 5 - 2nd Section | 15 - 2018 Cincinnati Express Registration |
| 6 - Div. 7 July Constest Results | 16 - 2018 Cincinnati Express Shirts |
| 7 - Layout Visit - Bob Bartizek | 17 - Div. 7 Classified Ads |
| 9 - Layout Visit - Jim Rollwage | 17 - Terry Luginbuhl |
| 11 - Div. 7 Awards | 18 - Knapp's Notes |
| | 19 - Down the Line |

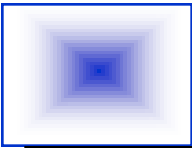
The Oil Can is a publication of Cincinnati Division 7, Mid Central Region, NMRA, Inc. Opinions expressed herein are the authors and do not necessarily reflect the opinion of Division 7, the MCR, the NMRA, it's officers, or it's members.

Space permitting, The Oil Can welcomes news items, articles and letters on Model Railroading and related topics. Deadline for submissions is generally the fifteenth of the month preceding the next meeting.

Cover:

Scene from Bob Bartizek's O-Scale layout

Photo by John Shields



By the time you read this (assuming you read all the columns in the *Oil Can* as soon as you receive it) I will be in the sunny state of Florida enjoying the 2017 National Convention. My wife and children exchanged lots of emails during July getting their theme park visit schedules in sync and getting their admission tickets ordered. My plans are a lot easier: Which clinics do I want to see and how much money do I take to the train show? Of course, it will be a lot harder sneaking my train show purchases into the house when you need to bring them home from Orlando. I'll have a convention report next month.

I found Terry Luginbuhl's clinic on "Consisting" at the July meeting to be very informative. I'll admit my only attempt so far at consisting 2 locomotives used the "simple" method. I assigned the same address to both engines. Unfortunately, that means the headlights on the inner ends of the coupled engines shine on each other which does not look very prototypical. Also, horn and bell sounds come from both engines. I'll have to try one of the other methods he described.

This being an odd numbered year, there will be elections held at the end of the year for the Superintendent and Assistant Superintendent positions, with their terms starting in January. Per the new division regulations we began operating under in June, these are the only two elected positions on the executive committee. Secretary Bruce Knapp and Treasurer Frank Koch are now serving in appointed positions. I have appointed a nominating committee with Peter Weiglin serving as the chairman, with Merlyn Jarman and Roy Hord assisting him. Peter, Merlyn, and Roy are all past Superintendents, so they have a good feel for the requirements for these positions. Let Peter know if you are interested in running for one of these positions. The nominating committee will publish their slate of nominees in the October *Oil Can*. Additional nominations (with appropriate petitions) can be made from the floor at the October meeting. The entire election process is described in great detail in the Division Regulations.

One decision yet to be made is whether this election will be carried out using electronic distribution of ballots (probably as an insert in the November or December issue of the *Oil Can*, or via US mail. This will be one of the items on the agenda for the next Division 7 BOD meeting on Friday, Sept 1st. Remember to keep your Email address on file with the National office up to date (or supply one if you haven't done so previously) so you can receive all the latest information from both the national office and the local division. NMRA national elections and other information distribution will be increasingly conducted electronically instead of via physical mail. If the NMRA national office doesn't have your current Email address, you could be missing out on a lot of useful information.

Plans are shaping up for the 2017 Model Train and Trade Show. This will be the 50th annual show and Rick Crumrine has lots of ideas for honoring this fact. Be sure to sign up for one of the jobs at the show (set-up, take-down, admissions, membership booth, etc.) and make a note of your shirt size so we can get you one of the commemorative shirts.

Speaking of shows, I was cleaning out a drawer recently and came across a brochure I received at the 20th annual show at Cincinnati Gardens in 1987 (it was an Exposition then). Since I moved back to this area in late 1986, this was probably the first Division 7 show I attended. Looking at the show layout, I see Bruce Knapp was doing engine checkup, Frank was doing estate sales, Greg Scholl was selling videos, and the Baumers were there, too. There were also a couple people sending messages back and forth on a telegraph. Wow, remember when people could drive onto the show floor and unload stuff right at their table?

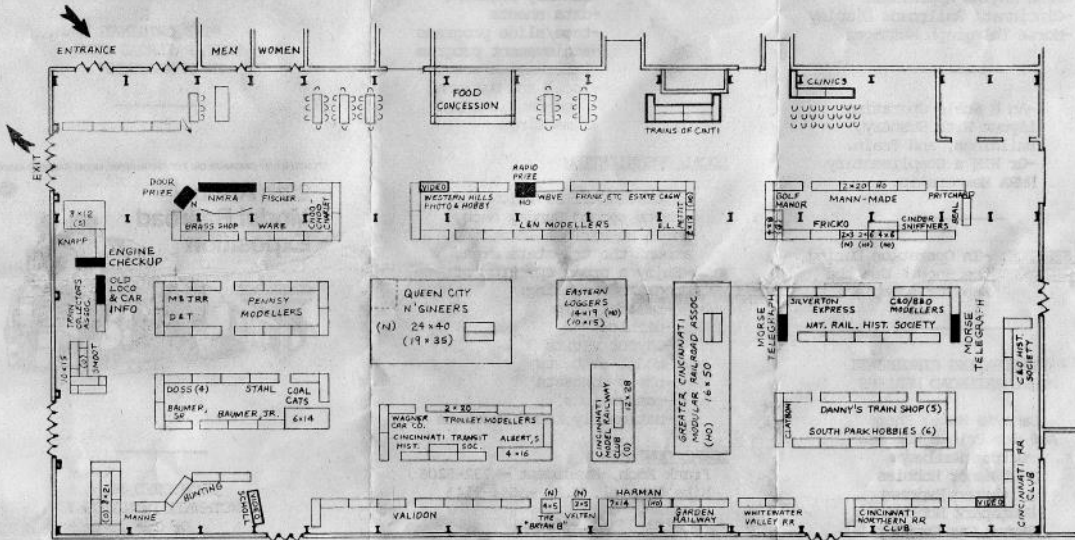
All for now. See you at the August meeting, or maybe in Orlando.

Bob Shreve
Div 7 Superintendent

Bob

Division 7 Train Show — 1987

FLOOR PLAN & GUIDE MAP FOR THE 20TH ANNUAL MODEL RAILROAD EXPOSITION



NOVEMBER 21 & 22, 1987 — SPONSORED BY THE
CINCINNATI DIVISION 7 OF THE NATIONAL MODEL RAILROAD ASSOC.

SHOW ATTRACTIONS

- SEE:** -Operating Model Railroads
-Free "HOW-TO" Sessions
-All Scales - From Z To G
-Retail Sales and Displays
-FREE Engine Checkup
-FREE Engine Appraisal
-Cincinnati Railroads Display
-Morse Telegraph Messages

- WIN:** -An N Scale Operating Layout With Scenery, Buildings, and Train.
-Or WIN a Complimentary NMRA Membership.

FOOD SERVICE: -In Operation During the Show. See the Map for Location.

PARTICIPATING CINCINNATI MODEL RAILROAD DEALERS

- Darry's Model Shop
Auf der Fricko Hobbies
Garden Railways
Golf Manor Hobbies
Silvertown Express
Southpark Hobbies
Wagner Car Company
Western Hills Photo & Hobby

NATIONAL MODEL RAILROAD ASSOCIATION (NMRA)

PURPOSE: A National organization to promote the model railroad hobby by providing:

- monthly magazine
- data sheets
- tape/slide programs
- achievement program
- information service
- local and National conventions and meetings



LOCAL ORGANIZATION:

- CINCINNATI DIVISION 7
-Meets second Sunday each month at various locations around the tri-state area.
-Enjoy a broad spectrum of programs including:
-railfan trips
-clinics
-layout visits
-model contests
-photo contests
-conventions
-nationally known speakers

LOCAL CONTACTS:

- Frank Koch, President - 732-6208
Mike Brestel, V.P. - 661-2141

FOR MORE INFORMATION ON NMRA MEMBERSHIP AND DOOR PRIZES:
GO TO THE NMRA BOOTH

WELCOME TO THE 20TH ANNUAL MODEL RAILROAD EXPOSITION -- 1987 --

"THE ORIGINAL MODEL RAILROAD SHOW IN CINCINNATI"

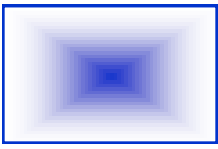
SPONSORED BY CINCINNATI DIV. 7 OF THE NATIONAL MODEL RAILROAD ASSOC.

20th Annual Model Railroad Exposition



SPONSORED BY CINCINNATI DIVISION 7 OF THE NATIONAL MODEL RAILROAD ASSOCIATION

A NON-PROFIT EDUCATIONAL ORGANIZATION



SECOND SECTION

John Shields
Asst. Super

Our July meeting on the 9th was held at St Susanna Catholic Church in Mason. Terry Luginbuhl gave a clinic on “Consisting” with various DCC systems. This was the second DCC clinic from Terry, but unfortunately there will not be a next installment because Terry is moving to Colorado before the end of the year. After the meeting we made a return visit to Bob Bartizek’s impressive O scale Pennsylvania & Western RR layout. Our second layout was a first ever visit for us up to Jim Rollwage’s HO Denver Pacific (Union Pacific) layout in Wilmington. For those who chose not to make the longer drives to these layouts, I’m sure Dave will have some photos in this Oil Can that will let you know what you missed.

Part of the job of setting up these meetings is to provide you, the members of Division 7, as many opportunities to learn and grow in the hobby as possible. I continue to try to find new layouts for you to visit, as well as opportunities to return to the many fine layouts we have been privileged to visit in the past. (And if you know of any layouts that we have not seen that you would like to recommend; send me a note!)

Looking ahead:

Before our August meeting is the NMRA National Convention and the accompanying National Train Show in Orlando. The dates for this year are July 30th through August 6th. Judging by the show of hands at the July meeting, there will be as many as a dozen of our members attending. I will be one of them. I am signed up for one of the “Modeling with the Masters” clinics. It will be interesting to see how these work.

For our August meeting, we will be centrally located within the I-275 loop at Good Shepherd Lutheran Church in Kenwood on Sunday August 13th. Ed Swain will be giving a clinic on building with styrene. Our layout visits will be to Gerry Albers’ HO Virginian and to Pat Homan’s HO, steam-era, Colorado-themed layout.

In September (9/10), we will be out on the southeast side at the Anderson Senior Center. Our clinician will be Ron Pearson with a presentation on “The Coal Mines on the East Broad Top”. Layout visits will be to John Listermann’s HO Baltimore & Ohio and to Rick Crumrine’s HO Waynesburg & Washington (Pennsylvania).

In October (10/8), we will venture south across the river to meet at the Kenton County Library in Erlanger. Our clinician will be Dan Finfrock. His subject is the B&O branch from New Miami to Middletown “A Railroad You Can Model”. Afterwards, we will visit Tom Vogt’s HO layout in Fort Wright and Perry Simpson’s HO L&N. The work on the I-75 bridge is supposed to be done before then, so not to worry!

We will be having a joint meeting with Dayton Division 3 in November. Layout visits will include Bob Lawson’s and Greg Simpson’s (from our Division) and hopefully one or two from Dayton. We will end our year as we usually do on the west side at Westwood United Methodist Church, with our annual pot luck slide show and snackfest. And in January, we will be back again in Kenwood on the 14th.

As I said last month, I had to get my column in early because I was attending the National N Scale Convention in Pittsburgh in late June. A highlight of this meeting was a tour via Amtrak to Altoona where we visited the Pennsylvania Railroader’s Museum (which I had been to before) and to the Norfolk Southern’s Juniata Shops.

One tidbit I picked up on the shop tour was that Juniata was one of two shops that painted NS’s heritage fleet locomotives. Juniata was essentially responsible for the “northern” railroads. I don’t model the current railroads, but I was interested to see that a big project underway there was the rebuilding of more than 50 UP diesels into NS engines. The tour guide told me that they can upgrade essentially two older engines for the cost of one new one. Juniata does contract work for a number of short lines, as well as for foreign railroads; besides being NS’s largest such facility. Clearly, this was a key element in the purchase/breakup of Conrail. The railfanning was also good right out of the hotel. The CSX mainline along the Monongahela ran right alongside the hotel and the NS mainline was on the hillside across the street.

I hope to see you in Kenwood on August the 13th.

John



**NMRA MCR DIV. 7
July 2017 CONTEST RESULTS**

MODELS: Flatcars with Loads

Box Stock:

- 1st Place: Jim MacKnight: KCS Flatcar #920 with bulk load
- 2nd Place: Norb Price: U.S. Army Flatcar with Truck and Car load
- 3rd Place: Marty Simon: Penn Central Flatcar #715500 with load of lumber

Kitbashed:

- 1st Place: Roy Allan: D&RGW Flatcar #6034 with load of lumber
- 2nd Place: Rick Stern: U.S. Army Flatcar with gun turret
- 3rd Place: Chuck Endreola: V&T Flatcar #54 with tarp covered boxes

Scratch Built:

- 1st Place: Chuck Endreola: C&M Flatcar #529 with sawmill assemblies
- 2nd Place: Georgia Dahlberg, MMR: Southern Pacific Flatcar #1324 with Nuclear Generators
- No Other Entries in this Category

PHOTOGRAPHY: Bridges/Trestles with or without trains

Print Prototype:

- 1st Place: David Wynne: Bridge to Nowhere on Durango & Silverton
- 2nd Place: Jim MacKnight: L&N GP30 on bridge near Oak Ridge, Tn.
- No Other Entries in the Category

Print Model:

- 1st Place: Jim MacKnight: G&LR Shay #9 on trestle (Sam Sawnsen's layout)
- 2nd Place: John Listermann: Bridge over Rosby's Rock (John's layout)
- 3rd Place: Chuck Endreola: Group of Bridges (Chuck's Layout)

Junior Division – No Entries Submitted in any Category

2017 STANDINGS – THROUGH JULY

MODELS

| | | | |
|-----------------------|----|---------------------|----|
| Bruce Knapp | 22 | Tom Brueggeman, MMR | 03 |
| Chuck Endreola | 12 | Norb Price | 02 |
| Roy Allan | 06 | Noah Powers | 01 |
| Georgia Dahlberg, MMR | 05 | Marty Simon | 01 |
| Rick Stern | 04 | | |
| Jim MacKnight | 04 | | |

PHOTOGRAPHY

| | | | |
|-----------------|----|-----------------------|----|
| Jim MacKnight | 15 | Phillip Wilkin | 05 |
| John Listermann | 08 | Georgia Dahlberg, MMR | 03 |
| David Wynne | 08 | Chuck Endreola | 01 |
| Bob Shreve | 07 | | |

JUNIOR DIVISION MODELS or PHOTOGRAPHY – No 2017 Entries

AUGUST 2017 CONTEST CATEGORIES -

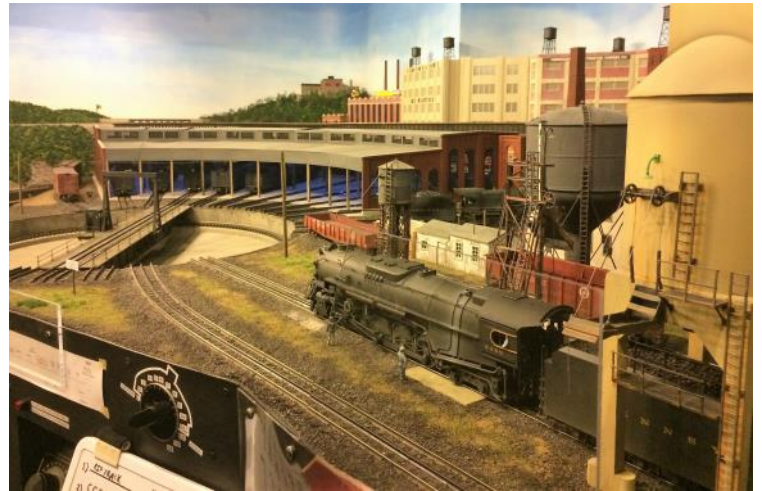
MODELS: BOX or REEFER CAR

PHOTOGRAPHY: BOX or REEFER CAR

Brad Jonas

NMRA, MCR, Div. 7 Contest Chair

LAYOUT VISIT to Bob Bartizek's O-Scale Layout



LAYOUT VISIT to Bob Bartizek's O-Scale Layout



Photo by John Shields

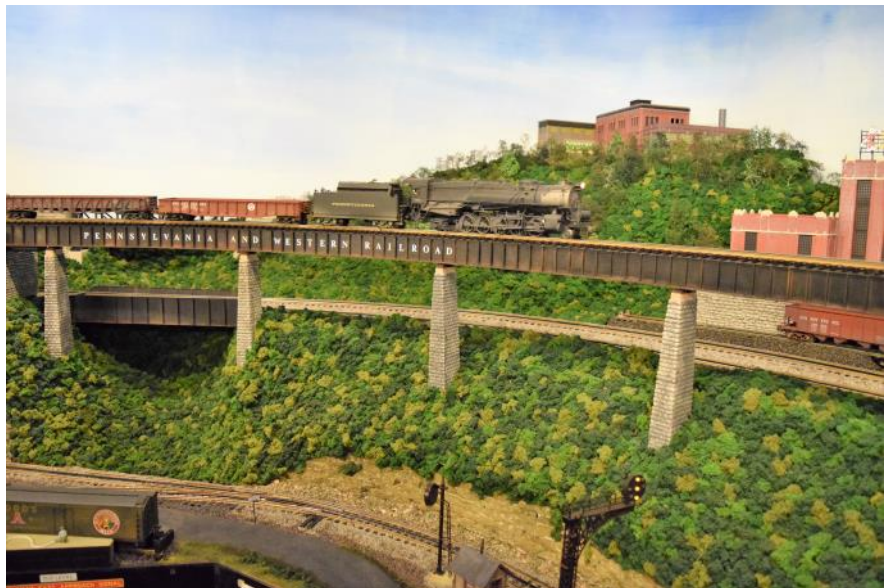


Photo by Bob Shreve



Photo by Bob Shreve

LAYOUT VISIT to Jim Rollwage's HO-Scale Layout



LAYOUT VISIT to Jim Rollwage's HO-Scale Layout



Photo by John Shields



Photo by Bob Shreve



Photo by Bob Shreve

AWARDS PRESENTED TO DIV. 7 MEMEBERS

At the Division 7 July Membership Meeting, Frank Koch presented several awards to Division 7 memebers:



Bob Shreve, Certificate of Achievement,
as Division 7 Superintendent

Photos by Dave Puthoff



Peter Weiglin, Merit Award,
as Association Volunteer for Division 7.



Dave Puthoff, Merit Award for Scenery on his layout

Not pictured: Rick Stern, Merit Award for
Scenery on his layout

Photo by Roy Hord

Fall Train Show

This is a monumental year for our Fall Train Show. We will be celebrating our **50 years of train shows**. We have the longest running train show in the nation. Something to be proud of. This only happened because of the support we get from all the volunteers, dealers and folks that bring displays and layouts.

To help celebrate we are ordering gold shirts with a logo celebrating our 50th. show. The shirts will be free to all volunteers. To get your shirt simply place your name and shirt size on one of our show signup sheets. I will have the signup sheets at our July and August meetings.

But wait there is more! All volunteers will be entered in a drawing for a free registration for our 2018 Convention.

We did not forget about the other people that make our show a success. For our vendors, we will raffle off five free tables. We will also recognize the longest attending top three vendors with a free table.

The groups that bring displays and layouts will all get a certificate of appreciation. The longest attending layout or display group will also get a plaque. Who will it be?

We cannot forget the public. The people we do this for. We will give a RailPass with every door prize during the show.

To wrap it all up at our pizza party Friday night we will have cake celebrating 50 years of train shows.

I have always thought our trains shows were fun. This one will be special. I look forward to seeing all of you there.

Rick Crumrine



Welcome Back! **May 17-20, 2018**

*Our first convention since
the 2005 NMRA National*



We've prepared tons of fun for everyone!



Abundant Premier Layouts!

Special Thurs Afternoon Early-Bird Layout
Open Houses - *Gerry Albers* and *Bob Lawson!*
Layout Tours & Operating Sessions All 4 Days!
Special *EnterTrainment Junction* Events!



Awesome Commercial Bus Tours!

Fantastic Rail Industry Prototype Tours
Fabulous General Interest Tours



4 'Great Model Railroad' Mini-bus Tours (12 layouts)!



Numerous Rail and Non-Rail Clinics

Special Guests *Gerry Leone*, *Lou Sassi* and
another speaker from *Model Railroader!*
Non-Rail Luncheon and Saturday Banquet



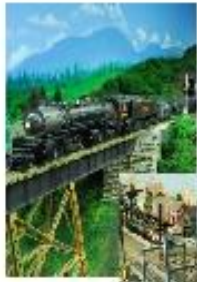
Plentiful Additional In-Hotel Attractions

Extra Large White Elephant Sale!
Model, Photo and Crafts Contests
Raffle, Company Store, Hospitality Room
Layouts at Hotel + *EnterTrainment Junction*



Register Now for Priority on Extra Fares & Ops

See form at our booth or www.cincy-div7.org



Abundant Layout Events

From 80 layouts, 50 published, 16 in GMR
Gerry Albers and Bob Lawson on Thurs Aft
Great Model RR Tours, Hotel + EJ Layouts
Operating Sessions, Layout Open Houses



Fabulous Non-Rail Activities

Findlay Market & Conservatory Tour
Am. Sign Museum & Spring Grove Tour
Luncheon with Cookie Decorating Chef
Genealogy & Greeting Card Clinics
Meet & Greet w/ Wine Tasting
Water Aerobics Class

Fantastic Rail Industry Tours

Tentative

Matandy Steel
Cinti Barge & Rail Terminal
Excel Logistics Tropicana
Enerfab Brighton Tru-Edge
Cincinnati Railfanning

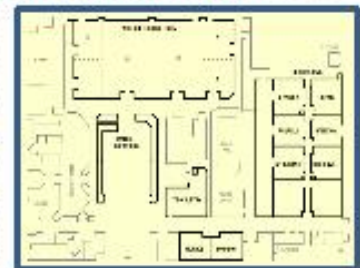


Wonderful Newly Remodeled Hotel

Cincinnati Marriott North (513) 874-7335
I-75 & Union Center Blvd, West Chester, Ohio
\$109 King Bed, \$119 Two Double Beds, Pre-Tax
Use code: "National Model Railroad Assoc."

Great Guest Speakers

Gerry Leone, Lou Sassi
and another from MR



Low Cost Registration Fees

Only \$75 Rail, \$25 Family (Spouse/Teen), Kids under 13 Free w/ Reg. Adult
Register Now for Extra Fares & Ops Priorities - See form or www.cincy-div7.org



CINCINNATI EXPRESS

Mid-Central Region Convention
West Chester, Ohio, May 17-20, 2018

Hosted by Cincinnati Division 7, MCR, NMRA

Mail to: CX Registrar

Questions to: 6526 Hollowview Ct.
rhord@fuse.net Liberty Township, OH 45011

EARLY REGISTRATION FORM (Sets Priority for Tours, Banquet, Ops Sessions)

Name _____
 NMRA # _____ Region _____ Division _____
 Address _____
 City _____ State _____ Zip _____
 Email Address _____ Phone _____

REGISTRATIONS

| Item | Quantity | Price | Amount |
|---|----------|-------|--------|
| Full Regular Registration* | | \$75 | \$ |
| Family Member (Spouse or Teenager) | | \$25 | \$ |
| Family Member (Child 12 or Under) | | Free | \$ |
| NMRA Full Membership with NMRA Magazine** | | \$75 | \$ |
| NMRA Full Membership without Magazine** | | \$47 | \$ |
| Total Amount Enclosed | | | \$ |

* Primary Registrant must be an NMRA member at the time of the convention

** See NMRA.org website for other classes of membership

Names for Badges:

| | |
|--|--|
| | |
| | |

PAYMENT INFORMATION

Make Checks Payable to "Cincinnati Division 7, MCR, NMRA." Check # _____

Credit Card: Visa ___ MasterCard ___ Card # _____ - _____ - _____

Expiration Date: (MM/YY) ___ / ___ CVV: _____ Billing Zip Code: _____

Make your **hotel** reservation directly with the **Cincinnati Marriott North** at 6189 Mulhauser Rd, West Chester, OH 45069, (513) 874-7335. Use Code "**National Model Railroad Association**". Special pre-tax room pricing is \$109 for a King Bed and \$119 for Two Double Beds.

OFFICE USE ONLY: Date Processed: _____ Reg. Number(s) _____

Advance Orders for “Cincinnati Express” Short Sleeve Shirts



Both in Royal Blue with pocket and new “Cincinnati Express” embroidered logo



- Indicate **Logo Side**:
- above pocket (default)
 - opposite pocket



Regular Shirt (Jerzees)

2 button, 50/50 cotton/poly, 5.6 oz. Jersey Knit Polo

S, M, L, XL = **\$22 + tax**
 2XL, 3XL, 4XL = **\$24 + tax**

Ladies version available w/o pocket for \$2 less

Premium Shirt (Cornerstone)

3 button, polyester, 6.8 oz Industrial Pique Polo

S, M, L, XL = **\$30 + tax**, 2XL = **\$32 + tax**, 3XL = **\$34 + tax**,
 4XL = **\$36 + tax**, 5XL = **\$38 + tax**, 6XL = **\$40 + tax**

| | | | |
|-------------------|--|--------|--|
| Name: | | Phone: | |
| Street Address: | | | |
| City, State, Zip: | | Email: | |

Mail with check or money order to:
Cincinnati Division 7 Company Store
P.O. Box 76010
Highland Heights, KY 41076

Circle/check above the **Shirt Type**, **Size**, **Price** and **Logo Side**
 Email Paul at company-store1@cincy-div7.org for shipping costs
All must add **7% sales tax** to total (after shipping if needed)
 Make check payable to: **Cincinnati Division 7, MCR, NMRA**

“Cincinnati Express” Long Sleeve Shirts



Teflon Coated Blue Generation Shirts, all in brilliant Royal Blue with “Cincinnati Express” embroidered logo

adjustable cuffs, 6.5 oz., 65/35 poly/cotton, stain and wrinkle resistant, fully buttoned front, soft touch finish



Men’s Shirt

Pocket w/pencil area, button down collar, logo on side opposite pocket, double back yoke, side back pleats
 Men’s S, M, L, XL, 2XL, 3XL, 4XL

Ladies Shirt

No pocket, logo on left side, spread collar w/o buttons, curved bottom to wear in or out, ladies fitted style
 Ladies S, M, L, XL, 2XL, 3XL, 4XL

Men’s Shirt

Ladies Shirt

All shirts the same price
\$32 + shipping (if needed) + **7% tax**
 (7% tax on total with shipping)

| | | | |
|-------------------|--|--------|--|
| Name: | | Phone: | |
| Street Address: | | | |
| City, State, Zip: | | Email: | |

Mail with check or money order to:
Cincinnati Division 7 Company Store
P.O. Box 76010
Highland Heights, KY 41076


Please circle above the **Shirt Type** (Men’s or Ladies) and **Size**
 Email Paul at company-store1@cincy-div7.org for shipping costs
All must add **7% sales tax** to total (after shipping if needed)
 Make check payable to: **Cincinnati Division 7, MCR, NMRA**

DIVISION 7 - CLASSIFIED ADS

As a benefit to Division 7 members, the Oil Can will offer to list free Classified Ads to allow members to sell railroad-related items. A few other Divisions offer such a program. The Board has approved a trial of 6 months; after which the program will be re-evaluated. If you have items to sell, please review the Rules, and send an email to editor@cincy-div7.org

CLASSIFIED AD RULES:

- Item(s) must be railroad related.
- Seller must be a Member of Division 7 MCR NMRA.
- Listing description shall be 30 words or less.
- Item(s) can be displayed for a maximum of three (3) months. Oil Can Editor will assign a Listing Number that will include the last month of listing. (E.g., "xx-July 2015" would indicate Listing xx will be listed through the July 2015 Oil Can).
- Seller must list name, and either Phone Number and/or Email, so the interested Buyer can contact Seller. It will not be listed without them. **(NOTE: Seller agrees to allow contact information to be published in the Oilcan, which is published on the Internet).**
- A single photo may be submitted for each listing.
- Limit of three (3) listings from same Seller at any one time.
- Seller shall email Oil Can Editor if item is sold so it can be removed from page.
- All transactions are between the Buyer and the Seller.
- Oilcan Editor reserves the right to edit listing if needed, and will notify Seller of edit prior to publication.

| Picture | Description | Price | Name | Phone, or Email | Listing No. |
|--|---|-----------|--------------|--|-------------|
|  | DCC Block Occupancy Detectors Built-in Adjustable Time-Delay-Off, Adjustable Sensitivity. 200 ma DC Open Collector & BiPolar Outputs with LED Indicator, 12 vdc. For DCC only. | \$12 each | Dave Puthoff | deputhoff@yahoo.com | 26-Aug-17 |

Terry Luginbuhl — Relocates to Colorado

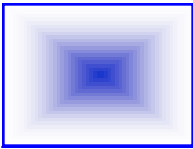
Division 7 lost a terrific member due to relocation. Terry Luginbuhl and his lovely wife Becky have moved to the Manitou Springs area of Colorado at the end of July. Terry retired from Cincinnati Bell where he wore several hats over his career. Among the positions he held were cable splicer, customer relations rep, instructor, and finished in the engineering department.

Since his retirement, Terry has become quite an expert in most DCC systems. He shared this knowledge freely at Tim's Trains and Hobbies, both one on one and in clinics. He has generously given his time and expertise in members' homes, to help install or troubleshoot their systems. Recently, he was a welcomed clinician at Division meetings. His knowledge of DCC and electricity is amazing. Ask a question about DCC workings or a specific system and he could answer off the top of his head quickly. In Terry's typical style of helping others, he plans to establish a website where he can still be of assistance to the members of his former Division. Terry is a great example of what the NMRA is all about.

In his new home, Terry plans to build a new On3 layout and have a chance to experience operating narrow gauge in the flesh more easily. His humor, comradery, friendship and generosity will be sorely missed.

Good Luck Terry and Becky in your new home.

Chuck Endreola



KNAPP'S NOTES

by Bruce Knapp

The Missing Division Clerk (Again)

I apologize for my absence from this month's meeting as I really wanted to hear Terry's presentation on consisting with DCC. I am in the process of programming my Santa Fe, CB&Q, and Cimarron Northern motive power, so I find Terry's expertise invaluable. Raton Pass was helper territory, but I plan to use separate crews on helpers. Consisting will be helpful in linking up multiple diesel sets for additional horsepower.

My quintet doubles as a civil war regimental band. (No, Bill it wasn't the war of Yankee aggression). In any case, we assisted our Federal Troops running the "Rebs" out of Sharon Woods. If you have never been to the Sharon Woods Civil War weekend, I encourage you to go next year, as we plan to run the C.S.A. out of the park again. I do appreciate Mike Brestel subbing for me, he always does an outstanding job. Kudos, also to Russ Poynter for another outstanding job with the raffle. In fact, he outdid himself, only one officer won a prize.

A Request from Otterbein Retirement Community

I received an e-mail from Dave Harrison, a resident at Otterbein, saying they initiated a "railroad room" at the community. Currently it gives residents a place to store their model railroad items. All too often, modelers have to dispose of the prized collections; with this facility, they have a secure location to store their treasured items. The long term plan calls for the building of a club/community layout. Dave was interested in how we could give assistance. I invited Dave and any other interested folk to attend our August meeting, I hope we can meet with them and assist. This sounds like a mission for our Modeler's Aid Super Heroes, "Super Chief" and "Captain Burlington". Of course, we will introduce them to joys of western modeling. Seriously, this sounds like a great opportunity to expand this wonderful hobby. More on this later.

Thanks Terry!

I mentioned Terry's expertise with DCC, I got a chance to see the master in action. I recently purchased Bowser/Stewart Soundtraxx powered FTA & B chassis for 4 different Santa Fe FT sets. The plan was to convert 4 sets to sound. One problem I encountered was the B units ran in reverse, so Terry assisted me in reprogramming the units to run in the correct orientation with the A units they were coupled to. I find NCE to be a very user friendly system for programming. I now have 2 freight and 2 passenger FT sets for use on Raton.

Next Meeting

I hope to see everyone at our August meeting at The Good Shepherd Lutheran Church, for Ed Swain's clinic on *Building Structures with Styrene*. I am really excited about Ed's presentation, as I plan to build the iconic Raton Depot in styrene. Another all-new, honest, improved, no-wait, WMPA approved raffle will be up to its normal high (?) standard. (I am not sure how you can improve on perfection, plus would I lie?) --- plus the layout visits look great.

Keep 'em rolling

Bruce

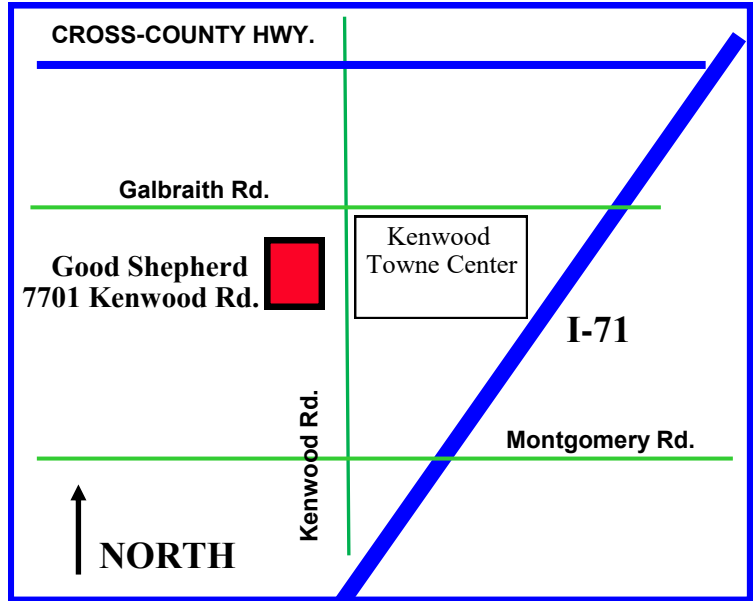
Next Meeting

2 PM Sunday August 13

Good Shepherd Lutheran Church
7701 Kenwood Road 45236

Directions:

- From North:** I-71 Montgomery Rd. Exit Right on Montgomery Rd. Right on Kenwood Rd. Church is on your left.
- From South:** I-71 Kenwood Rd Exit Left onto Kenwood Rd. Church is on your left, past Montgomery Rd.
- From East/West:** Cross-County Hwy. Exit Kenwood Rd. Go South on Kenwood Rd. (past Galbraith Rd.) Church is on your right.



Coming Down the Line

Cincinnati Division 7, MCR, NMRA
2017 Schedule

NOTE: ALL REGULAR MEETINGS START AT 2 PM
(Unless otherwise notified)

| <u>Date</u> | <u>Location</u> | <u>Program/Speaker</u> | <u>Layout Visits</u> | <u>Contest Topic</u> |
|-------------|---|--|----------------------------------|--|
| 8/13 | Good Shepherd Church Kenwood | Ed Swain <i>Building with Styrene</i> | Gerry Albers Pat Homan | <u>Models:</u> <i>Box or Reefer Cars</i> <u>Photos:</u> <i>Box or Reefer Cars</i> |
| 9/10 | Anderson Senior Center Anderson Township | Ron Pearson <i>Coal Mines on the East Broad Top</i> | John Listermann Rick Crumrine | <u>Models:</u> <i>Locomotives</i> <u>Photos:</u> <i>Locomotives</i> |
| 10/8 | Kenton County Library Erlanger KY | Dan Finrock <i>B&O New Miami to Middletown</i> | Tom Vogt Perry Simpson | <u>Models:</u> <i>Structures</i> <u>Photos:</u> <i>Structures</i> |

Around the Division
2017

8/18 **Lebanon Modelers - Lebanon OH**

9/15 **Lebanon Modelers - Lebanon OH**

Region / National
2017

7/30 - 8/6 **NMRA National Convention - Orlando FL**

Modeling Problems? - Ask the Member Aid Committee

Pat Homan (513) 861-2057
Bruce Knapp (513) 941-2713

Div. 7 Hot Line(513) 662-RAIL
Div. 7 Web Sitewww.cincy-div7.org
MCR Web Sitewww.midcentral-region-nmra.org
PO Box 43401 Cincinnati, OH 45243