



February, 2016

# THE Oil Can



Volume X Issue 2



## Division 7 Officers

**Superintendent:** **Bob Shreve**  
827 Quailwood Ct  
513 398-1355  
[bshreve@fuse.net](mailto:bshreve@fuse.net)

**Asst. Super:** **John Shields**  
8520 Indian Hill Rd.  
513 561-8691  
[qengineers@aol.com](mailto:qengineers@aol.com)

**Secretary:** **Bruce Knapp**  
118 Cliff Rd.  
513 941-2713  
[bruce\\_knapp@roadrunner.com](mailto:bruce_knapp@roadrunner.com)

**Treasurer:** **Frank Koch**  
4769 Silverwood Dr.  
513 732-6208  
[fjkoch@hotmail.com](mailto:fjkoch@hotmail.com)

---

**Oil Can Editor:** **Dave Puthoff**  
513 742-3227  
[editor@cincy-div7.org](mailto:editor@cincy-div7.org)

## Trustees

<b>Bob Adams</b>	(South)	<b>859 384-0369</b>
<b>Mike Brestel</b>	(West)	<b>513 661-2141</b>
<b>John Burchnall</b>	(North)	<b>513 860-3852</b>
<b>Rick Crumrine</b>		<b>513 231-5328</b>
<b>Roy Hord</b>		<b>513 777-5337</b>
<b>Merlyn Jarman</b>		<b>812 539-3232</b>
<b>Randy Kerka</b>		<b>513 378-8108</b>
<b>Jim MacKnight</b>	(East)	<b>513 733-1246</b>
<b>Dave Read</b>		<b>513 398-7323</b>
<b>Dianne Rowland</b>		<b>513 755-7381</b>

## Committee Chairs

<b>Achieve. Prog.</b>	<b>Frank Koch</b>	<b>513 732-6208</b>
<b>Car Projects</b>	<b>Jim MacKnight</b>	<b>513 733-1246</b>
<b>Circulation</b>	<b>Chuck Endreola</b>	<b>440 823-7374</b>
<b>Comm. Service</b>	<b>Jim MacKnight</b>	<b>513 733-1246</b>
<b>Company Store</b>	<b>Paul Musselman</b>	<b>859 384-2472</b>
<b>Contests</b>	<b>Brad Jonas</b>	<b>513 755-3795</b>
<b>Convention 2018</b>	<b>Rick Crumrine</b>	<b>513 231-5328</b>
<b>Division 7 Booth</b>	<b>Brad Bove</b>	<b>513 227-7527</b>
<b>Excursions</b>	<b>John Burchnall</b>	<b>513 860-3852</b>
	<b>Merlyn Jarman</b>	<b>812 539-3232</b>
<b>Fall Show</b>	<b>Rick Crumrine</b>	<b>513 231-5328</b>
<b>Flea Market</b>	<b>Dianne Rowland</b>	<b>513 755-7381</b>
<b>Layout Ops.</b>	<b>Rick Stern</b>	<b>513 729-1054</b>
<b>Membership</b>	<b>Peter Weiglin</b>	<b>513 947-1422</b>
<b>Modelers Aid</b>	<b>Pat Homan</b>	<b>513 861-2057</b>
<b>Monthly Raffle</b>	<b>Bruce Knapp</b>	<b>513 941-2713</b>
<b>Publicity</b>	<b>Randy Kerka</b>	<b>513 378-8108</b>
<b>Spcl. Projects</b>	<b>Dick White</b>	<b>513 829-8510</b>
<b>Video Library</b>	<b>Kevin Orcutt</b>	<b>513 934-4096</b>
<b>Web Master</b>	<b>John Burchnall</b>	<b>513 860-3852</b>

## Mid Central Region Officers

**Pres.** **Steve Kaplan**  
[president@midcentral-region-nmra.org](mailto:president@midcentral-region-nmra.org)

**V.Pres.** **Michael Hohn**  
[vp@midcentral-region-nmra.org](mailto:vp@midcentral-region-nmra.org)

**Secr.** **Art Bumpus**  
[secretary@midcentral-region-nmra.org](mailto:secretary@midcentral-region-nmra.org)

**Treas.** **Jerry Doyle**  
[treasurer@midcentral-region-nmra.org](mailto:treasurer@midcentral-region-nmra.org)

## The Editors Corner:

**Dave Puthoff**

With the passage of a sales tax issue in Hamilton County last year, funds were provided for the restoration of Union Terminal, for mostly structural and mechanical repairs.

Repair work makes it necessary to close portions of the building, for up to 30 months. Closed areas will include the Cincinnati Railroad Club's Tower A, the Cincinnati In Motion S-Scale Layout, as well as the Museum Center's tours of the building.

In April, our meeting will take place in Tower A, and we will have a customized tour of C.U.T. (some of which is seldom seen by the public!). **Since we are subsidizing the cost of the tour, participation is limited to Division 7 members only.**

Space is limited! Be aware that the High Steel portion involves walking up (and down) 10 stories of steps (no elevator!) ---- but please note that there are provisions in place to allow participants to opt out even during the tour.

**Want to have it both ways?** Come prior to the Division 7 Meeting, and explore the Cincinnati In Motion exhibit on your own! (Just pay for your Admission to the History Museum).

In this issue, you will find information regarding this special tour.

**Reservations are a must, and must be received no later than March 15!**

If you have a photo, or a useful tip, or maybe just a useful website that you would like to share, the Oil Can is an opportunity to share it with your fellow model railroaders. Email it to [editor@cincy-div7.org](mailto:editor@cincy-div7.org).

*Dave*

## Contents:

- |                                 |                                  |
|---------------------------------|----------------------------------|
| 3 - Headlights                  | 11 - Div. 7 May Bus Tour         |
| 4 - 2nd Section                 | 15 - Div. 7 Classified Ads       |
| 5 - Cincinnati Subway Lecture   | 16- Layout Visit - Dan Mack      |
| 5 - "Cincinnati Express" Shirts | 17 - Layout Visit - Gerry Albers |
| 6 - Div. 7 Jan. Contest Results | 18- Knapp's Notes                |
| 7 - C.U.T. Tour April 10        | 19- Down the Line                |
| 9- White Elephants Flea Market  |                                  |

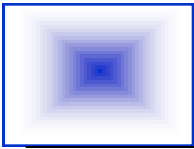
*The Oil Can is a publication of Cincinnati Division 7, Mid Central Region, NMRA, Inc. Opinions expressed herein are the authors and do not necessarily reflect the opinion of Division 7, the MCR, the NMRA, it's officers, or it's members.*

*Space permitting, The Oil Can welcomes news items, articles and letters on Model Railroading and related topics. Deadline for submissions is generally the fifteenth of the month preceding the next meeting.*

**Cover:**

**Scene from Gerry Albers's HO Scale Layout**

Photo by John Burchnall



Well, we're definitely into winter now. As I'm writing this, people in the southern part of the division are blanketed with 6" or so of the white stuff, while people in the northern area remain relatively unscathed (for now).

Thank you to everyone who took the time to send in their ballots for the Division 7 elections. John, Frank, Bruce, and I are ready to serve the division for another 2 years. The other issue on the ballot to approve the new regulations also passed. As Frank explained, the new set of regulations take effect only after the NMRA National's tax-exempt 501c3 status flows down to our local division and we establish an entirely new Ohio non-profit organization. You'll hear more about this in the coming months.

As I mentioned in my column last month (and at the January meeting), the 2016 MCR Convention information packet has been distributed in both electronic and printed form. I know at least one person found the email with the convention info in his Junk Email folder, so if you did not receive the email message you should check for it there. There is also a link to the convention web site from the Division 7 web page. Based on the information in the packet, it should be an enjoyable convention with lots of activities for everyone. Our next meeting on February 14<sup>th</sup> will include a presentation by Pat Hreachmack from Division 6 in Columbus about the MCR convention. His presentation will give more info about the convention activities.

When John Burchnall and Merlyn Jarman announced the 2016 Division 7 bus trip to Fostoria, Ohio at the December meeting, we thought it was going to be a popular destination. When the registration forms became available in January, we found out how right we were. The bus tour sold out in about 12 days! That's really good news for John since it means he doesn't have to bring the display board to the meeting anymore. John's still accepting names for the waiting list so if you didn't sign up yet, there's still a slim chance you could go. Along with the stop at the Iron Triangle Railfan Park in Fostoria, there will be 3 model railroads to see, and a tour through the Allen County Museum.

Andy Wartman's American Eagle Railroad Group is sponsoring their Northern Kentucky train show again this year. The show will be on February 20<sup>th</sup> at the Ft Wright Elementary School. Show times are 10 am to 3 pm. The division membership booth will be there. See me at the February meeting if you want to help man the booth at this show.

The folks at EnterTrainment Junction are holding their 2016 Scale Model Expo on March 5<sup>th</sup> & 6<sup>th</sup>. Admission to the expo is free. Hours are 10 am to 6 pm on Saturday, and Noon to 4 pm on Sunday. I went to the show last year and was very impressed by the variety of models on display. While there were model trains on display, there were also scratchbuilt boats, airplanes, and even operating model stationary steam engines. Some of the military dioramas were also pretty interesting (think lots of GI-Joes). More info at [www.entertainmentjunction.com](http://www.entertainmentjunction.com)

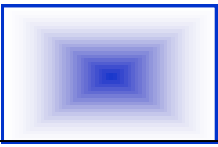
Look for the sign-up sheets (and put your name on one) for the Division 7 Swap Meet on March 12<sup>th</sup> at the Lakota West Freshman school. We need lots of help with the set-up on Friday afternoon and clean-up on Saturday. We also need people to work admissions and the membership booth. Dianne Rowland is stepping down from her position as the chairperson of the Swap Meet. Thank you to Peter Weiglin for answering my call for someone to step up and take on this responsibility. Peter will be co-chairing with Dianne this year and assume full responsibility next year.

In your February issue of the NMRA.Org magazine is a ballot for the National director elections. There are 3 different races, but we in Division 7 can only vote on one of the races (we don't live in a western state or outside of North America). These are the people who represent you at the National level, so take the time to send in your vote. Note that there is a local person running in the one race we can vote on.

That's it for this month. See you at the February meeting in West Chester.

*Bob*





# SECOND SECTION

John Shields  
Asst. Super

Our January meeting was in Kenwood at the Good Shepherd Lutheran Church on January 10<sup>th</sup>. Our clinician was John Listermann who gave a clinic entitled: "Painting Backdrops for Model Railroads". This was a live demonstration clinic with John actually creating a simulated backdrop while he talked and demonstrated. It was really impressive to see the quality that John was able to create in just over 40 minutes. Afterwards, we visited Gerry Albers' Virginian layout in Amberly Village and Dan Mack's Ohio Valley & Eastern in Milford (both HO).

In February, we will return to the West Chester Library on February 14<sup>th</sup> for a clinic by Charlie Atkinson on the Hocking Valley Railroad. The contests will be for models of hopper cars and photos of people working on the railroad. The layout visits will be to Sam Parfitt's HO Great Northern and Ed Swain's HO Pennsylvania.

There will be no Division meeting in March due to the Spring Flea Market on March 12<sup>th</sup>.

For the April meeting on April 10<sup>th</sup>, we will be meeting in Tower A at Cincinnati Union Terminal, hosted by the Cincinnati Railroad Club. We are working on a plan to be able to do "back stage" tours of the terminal in lieu of the normal clinic. See elsewhere in this Oil Can for a form to register for these tours. Due to the length of the tours (2 hours+), we will not be having any layout tours after the meeting.

At the end of April is the Regional Convention in Columbus, running from April 28 to May 1. There will be more information and a presentation on this convention during our February meeting.

There is no Division meeting in May either, due to the annual Bus Tour. This year's tour is to the "Iron Triangle" in Fostoria, the Allen County Museum in Lima, and three premier layouts. Reservations for this trip sold out in less than two weeks, but John Burchnall is still taking wait list names. In past years, we have usually had to use names from this list as things come up and people with reservations have to cancel at the last minute. In June, we will be at the Anderson Senior Center on June 12<sup>th</sup>, with a clinic presented by Gerry Albers on "How to Design Your Basement for Operations". In July, we will be at St Susanna Church in Mason.

And now for some random thoughts:

A recent email exchange started me thinking about what it is that attracts people to model railroading. The exchange related to having Lionel trains as a kid. I know the conventional wisdom is that most of us had Lionel trains as kids (or had friends that did), and this early enjoyment led us to more serious modeling. It's a little unclear whether an interest in real trains made the toy trains attractive, or vice versa; but somehow the connection was made. And the "real" trains that we lived near usually became a focus for our modeling.

I've always thought this was interesting, even though I myself never had Lionel trains; because it seemed to fit the experience of a lot of the modelers I knew. However, I think this paradigm is in need of change. Those of us that actually grew up in the 50s might have fit this pattern, but I'd bet that most of our younger members nowadays did not have Lionel trains. Just like most of these folks never saw a steam engine in actual service. If they had a train set as a kid, it was probably HO or N; and it came with track that is engineered to fit perfectly with no skill needed [ Unitrack or EZtrack ]. The first model train they saw might have been LGB, either around the Christmas tree or at some business where it ran around the ceiling. And much of the rest of any display they saw was pre-assembled and already *very* realistic.

Why this matters, I think, is that scale model railroading is no longer a step up from toys. People don't develop skills and apply them to making models that are better than the off-the-shelf toys. There is less building required. I feel some loss there, because the satisfaction of creating something with my hands is part of what I have always liked about building models. But my conclusion is that we need to rethink our stereotypes of "modelers" to fit the current reality that today's new model railroader is more focused on collecting the appropriate models and assembling them into trains and displays that capture the image of the prototype and then operating those trains realistically. This is reflected in the move to DCC and the growth of sound equipped engines; as well as the trend to "built-up" structures. Rather than mourn the loss of "kits" and "building", we need to embrace the changes and continue to help our members learn how to use the materials available to better enjoy the hobby.

See you in West Chester on the 14<sup>th</sup>.

*John*

# CINCINNATI SUBWAY LECTURE

As previously reported, the City of Cincinnati has at least temporarily curtailed tours of its infamous Cincinnati Subway, out of concerns for visitor safety. For years, the Cincinnati Museum Center has held tours of the Subway as part of their Heritage Tours (but not this year).

The Cincinnati Museum Center also sponsors monthly 1-hour “Brown Bag Lectures” on various topics. On Monday, February 8, the topic will be the Cincinnati Subway, presented by Dave Savage, a popular and entertaining speaker. (On June 20, the topic is the Planning & Construction of C.U.T.).

These lectures are FREE and open to the public. No reservations or tickets! Bring your lunch, if desired. Presentations start at 12 Noon, in the large Reakirt Auditorium, and end about 1 pm.

## Advance Orders for “Cincinnati Express” Short Sleeve Shirts



Both in Royal Blue with pocket and new “Cincinnati Express” embroidered logo



Indicate **Logo Side**:  
 above pocket (default)  
 opposite pocket



### **Regular Shirt** (Jerzees)

2 button, 50/50 cotton/poly, 5.6 oz. Jersey Knit Polo

S, M, L, XL = **\$22 + tax**  
 2XL, 3XL, 4XL = **\$24 + tax**

Ladies version available  
 w/o pocket for **\$2 less**

### **Premium Shirt** (Cornerstone)

3 button, polyester, 6.8 oz Industrial Pique Polo

S, M, L, XL = **\$30 + tax**, 2XL = **\$32 + tax**, 3XL = **\$34 + tax**,  
 4XL = **\$36 + tax**, 5XL = **\$38 + tax**, 6XL = **\$40 + tax**

Name:		Phone:	
Street Address:			
City, State, Zip:		Email:	

Mail with check or money order to:  
**Cincinnati Division 7 Company Store**  
**P.O. Box 76010**  
**Highland Heights, KY 41076**

Circle/check above the **Shirt Type**, **Size**, **Price** and **Logo Side**  
 Email Paul at [company-store1@cincy-div7.org](mailto:company-store1@cincy-div7.org) for **shipping costs**  
**All** must add **7% sales tax** to total (after shipping if needed)  
 Make check payable to: **Cincinnati Division 7, MCR, NMRA**



**NMRA MCR DIV. 7  
JANUARY 2016 CONTEST RESULTS**

**MODELS: CABOOSES**

**Box Stock:**

- 1st Place: Bruce Knapp: Cimarron Northern Caboose #1243
- 2nd Place: Bruce Knapp: Cimarron Northern Caboose #C16
- No Other Entries in this Category

**Kitbashed:**

- 1st Place: Bruce Knapp: AT&SF Caboose #1566
- No Other Entries in this Category

**Scratch Built:**

- 1st Place: Chuck Andreola: Logging Caboose
- No Other Entries in this Category

**PHOTOGRAPHY: CABOOSES**

**Print Prototype:**

- 1st Place: Jim MacKnight: Pennsylvania Caboose #476087
- 2nd Place: Georgia Dahlberg, MMR: Union Pacific Caboose "Unmounted"
- 3rd Place: Jim MacKnight: Union Pacific Caboose #3270 At Heber Valley Railroad in Utah

**Print Model:**

- No Entries in this Category

**Junior Division** – No Entries Submitted in any Category

**2016 OVERALL STANDINGS (through January 2016)**

**MODELS**

Bruce Knapp	08
Chuck Andreola	03

**PHOTOGRAPHY**

Jim MacKnight	04
Georgia Dahlberg, MMR	02

**JUNIOR DIVISION – MODELS** – No 2016 Entries to Date

**JUNIOR DIVISION – PHOTOGRAPHY** – No 2016 Entries to Date

**FEBRUARY CONTEST CATEGORIES -**

**MODELS: HOPPER CAR(S) – WITH OR WITHOUT LOADS**

**PHOTOGRAPHY: PEOPLE WORKING ON THE RAILROAD**

Brad Jonas  
NMRA, MCR, Div. 7 Contest Chair

# CINCINNATI UNION TERMINAL TOUR - \$20

**Sunday April 10, 2016 - 3 pm to 5:30 pm**

(after our regular April Div. 7 Meeting, which will occur at 2 PM in Tower A of C.U.T.)

## Two Options:

Option 1 (Limit of 40 people):	Option 2 (Limit of 20 people):
High Steel (above Rotunda ceiling) Clock (in front of building)	Cincinnati In Motion (S-Scale Layout in History Museum)
President's Offices	President's Offices
Dining Rooms	Dining Rooms

**RESERVATIONS are REQUIRED, received by March 15 – Div. 7 Members ONLY**

## Details:

**High Steel Clock** - Walk up North stairs (4 floors) and visit Clock mechanism that operates the 16-foot clock in front of C.U.T.  
- Cross over to South side via glass walkway, and walk up South stairs (4 more floors) and pause.  
- Climb metal walkway above Rotunda ceiling.  
- Walk down South stairs to Rotunda floor.

**NOTE:** See separate Cincinnati Museum Center sheet ("Notice of Conditions") for cautionary statements regarding those intending to participate in the High Steel & Clock tour.

**President's Office** - Off of Main Floor, visit the restored Executive Offices of the Cincinnati Union Terminal Co.

**Dining Rooms** - Main Floor, visit former Lunch Counter and Formal Dining Rooms  
- Second Floor, visit restored Private Dining Rooms (rarely seen by the Public!)

**Cincinnati In Motion** - Visit the Museum Center's S-scale layout that features scenes of Cincinnati in different time periods. At least 18 operating trains, 7 Streetcars, 4 Inclines. [NOTE: It will close during renovations, starting July]

### Terms & Conditions:

- No Cameras, cell phones, or purses are allowed on High Steel & Clock tour – for safety reasons! (Cameras are allowed in other areas)
- No Flashlights allowed on High Steel & Clock tour – for safety reasons! (Docents carry flashlights in unlikely event of a power outage)
- Hard-sole shoes required on High Steel & Clock tour
- Each Participant must sign a Waiver of Liability prior to tours
- Participants limited to NMRA members
- Limited number of Participants. A Wait-List will be maintained when full – Refunds will be given after Registration deadline only if replaced from List.

Name \_\_\_\_\_

Address \_\_\_\_\_ City \_\_\_\_\_ State \_\_\_\_ Zip \_\_\_\_\_

Home Phone \_\_\_\_\_ Email \_\_\_\_\_

**\$20**

**Mail to:**

Pay by cash, check, or Money Order, to: Cincinnati Division 7, NMRA

Dave Puthoff  
50 Hayden Drive  
Cincinnati OH 45218

CHECK ONE: Option 1

Option 2



**Cincinnati  
Museum  
Center**

---

NOTICE OF CONDITIONS  
CINCINNATI MUSEUM CENTER AT UNION TERMINAL  
HIGH STEEL TOUR

**Caution:** You must climb over 300 steps to reach the apex of the “high steel.” Several areas of steps are on ladders, and there are low overhangs to negotiate while ascending and descending on the ladders.

**Attire:** Please wear slacks, sturdy shoes and washable clothes, as they may get dirty during the tour. No skirts, open-toed shoes, flip-flops or sandals permitted. Additionally, we reserve the right to prohibit other articles of clothing or dress which we may deem unsafe.

**You must be at least 12 years of age to participate in the tour. Any guest under 18 must be accompanied by an adult.**

Segments of this tour may not be appropriate for people who:

- are sensitive to heights
- are sensitive to very warm areas
- have heart conditions
- have anxiety about being in dark, dusty, confined, narrow or steep places
- have a physical condition affecting balance
- have difficulty climbing
- need to avoid strenuous activity because of a medical condition

No personal items are to be brought on the tour, including but not limited to purses, cameras, cell phones, and flashlights.

**NO PHOTOGRAPHY IS ALLOWED.**

Lockers available on-site for \$.50 each (two quarters). If glasses are worn, please make sure they are securely fitted at all times. We also suggest that you not wear any hanging or loose fitting jewelry or clothing. Cincinnati Museum Center cannot be held responsible for personal items that are dropped, lost or damaged during the tour.

Your signed waiver must be received by a Cincinnati Museum Center representative prior to the tour.

**Cincinnati Museum Center Heritage Programs appreciates your attention to the above details and requests.  
(513) 287-7031**

**1301 Western Avenue Cincinnati, Ohio 45203 (513) 287-7000 [www.cincymuseum.org](http://www.cincymuseum.org)**



## WHITE ELEPHANTS AT SPRING FLEA MARKET

**White Elephants at the 2016 Spring Flea Market** (Frank Koch) – I'm back again for any individual Division 7 members with items they wish to sell.

Prepare an inventory showing your name, address, and telephone number and listing **each individual** item with a description and code so I can match it back to you and your **firm** asking price in **whole dollar amounts only**. **Each individual item must be clearly marked and priced as shown below.**

If there is more than one of an item, list them separately. Put all your items in a bag or box and bring them to the show before it starts. I'll log them in, sell them, reconcile sales with left-over material, and calculate how much you get back.

The Division will keep 10% of actual sales. You can pick up your unsold material and money on Sunday right after the show closes. If you would like an electronic inventory form, send me an e-mail at [fjkoch@hotmail.com](mailto:fjkoch@hotmail.com) with "elephant inventory" in the subject.

FJK - 12 \$10
------------------

Items are placed in the White Elephant Sale at your own risk. Neither Division 7 nor Frank Koch assumes any liability for any items damaged or stolen during the show, though we will provide due diligence for their safety.

We will not accept items that are not prepared as indicated here. We cannot accept magazines.

If you want to help out at some time during the flea market, let Frank know. We reserve the right to refuse any material that we deem unsuitable.

Division 7 White Elephant Sale  
(10% of actual sales retained by Division 7)

**2016 MRO**

Name: Mark Rose donate to NMRA  
Street Address: \_\_\_\_\_  
City, State, Zip: \_\_\_\_\_  
Telephone Number: \_\_\_\_\_  
E-mail Address: \_\_\_\_\_

Initials	Item #	Description	Price (\$)	Sold
MRO	1			
MRO	2			
MRO	3			
MRO	4			
MRO	5			
MRO	6			
MRO	7			
MRO	8			
MRO	9			
MRO	10			
MRO	11			
MRO	12			
MRO	13			
MRO	14			
MRO	15			
MRO	16			
MRO	17			
MRO	18			
MRO	19			
MRO	20			
MRO	21			
MRO	22			
MRO	23			
MRO	24			
MRO	25			

# **Cincinnati Div. 7 NMRA**

*Spring Bus Trip*  
***Iron Triangle  
Express***

***Saturday, May 21, 2016***

**Div. 7 Members + Spouse/Guest  
Don't Miss Out - Sign Up Today !**

## **Deluxe Motor Coach Tour**

**Fostoria's Iron Triangle Rail Park!  
6 Tracks with over 100 trains daily**

**2 Allen County Museum Tours!  
Mansion, Rail Collection/Archives**

**Visit 3 Premier Scale Model RRs!**

**Great Fellowship and Scenic Roads  
Enjoy Deluxe Box Lunch & Waters**

# Fostoria's Iron Triangle Rail Park

3 dual track mainlines with over 100 NS and CSX trains per day



# Lima's Superb Allen County Museum

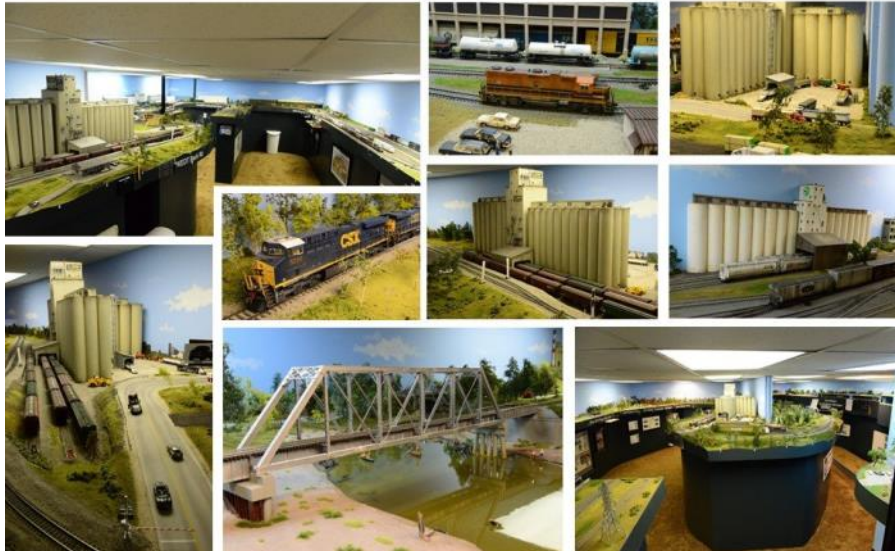
See award winning displays + RR archives + historic house guided tour





# Large Modern CSX Midwestern Pike

Chip Cole – must see, including “signals by flashcard” and shortline ops



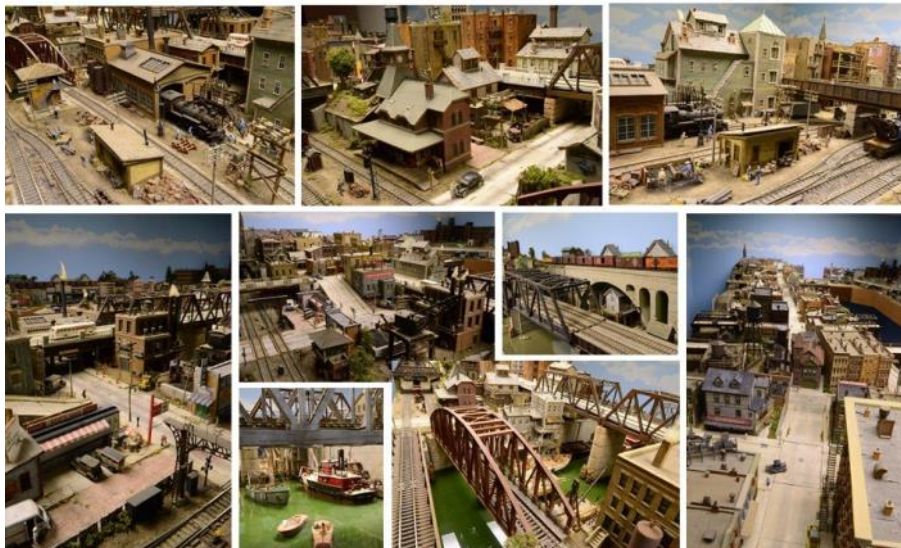
# Beautiful D&RGW Colorado Layout

David Powell – 1950's/60's standard gauge “Mainline thru the Rockies”



# Incredible Must See Circa 1955 Layout

Howard Clark – packed with exquisite custom craftsman structures



# "The Iron Triangle Express"

**Saturday, May 21, 2016**

**Deluxe Motor Coach Tour to Fostoria, Ohio "Iron Triangle Rail Park" + Allen County Museum + 3 Area Premier Model Railroads in Lima, Ohio**

**Departing 7:00 AM and Returning by about 7:20 PM, from and to West Chester, OH  
Bus Restrictions Limit this Trip to the first 44 Registrants that Sign Up  
Registration Deadline Sunday, April 10, 2016 – No Refunds after this Date**

## Exclusive Tour Package

### Dual Tour Inside the Allen County Museum!

Special tours of the historic mansion and railroad archives  
Shay loco, streetcar, fire, auto, Dillinger, miniatures exhibits

### Single Departing Location – West Chester, Ohio

Exact location disclosed later only to registrants  
Park at own risk - Provide car and license info below

### Iron Triangle + 3 Premier Model Railroad Layouts!

New rail park in 6 track "Iron Triangle" with ~100 daily trains!  
3 superb scenicked layouts – diverse eras/locales – all HO scale

### Fantastic Inspirational Day for a Great Price!

Deluxe motor coach transport, scenic roads, bottled waters  
Experienced guides, Panera Bread Company deluxe box lunch

**Chip Cole** – large modern era CSX Toledo to Detroit to Chicago layout designed for operations, featuring huge classification yard, Ford plant, Genesee & Wyoming shortline, CVP EasyDCC, "signals by flashcard", nice structures built by Howard Clark

**Howard Clark** – must see, incredible NKP/ NYC/B&O circa 1955 layout inspired by George Sellios, packed with exquisite wood craftsman style structures, featuring bridges, wharfs, roundhouse and wonderfully detailed multi-level city scenes

**David Powell** – beautiful 1950's/60's era D&RGW "Mainline thru the Rockies" pike in a beautiful home, featuring detailed roundhouse, mountains, aspens, nifty fascia lettering, plus several other nice model displays, including Howard Clark structures

## Fares and Registration

### Fare of \$65 per person includes -

- **Deluxe Motor Coach** round trip transportation from West Chester, Ohio area to all included Ohio area attractions
- **Transport and admission** to Rail Park, Allen County Museum, 3 premier model railroads, deluxe box lunch, waters
- Visits to **3 premier model railroads** plus the **Allen County Museum** complex - all never seen before on our tours!
- **Exclusive guided tour** inside the **McDonnell House**, including 2 floors of furnishings and incredible woodwork
- **Photos permitted everywhere** – however no tripods, bags/packs or flashes permitted in the museums or layouts

### Other Terms and Conditions -

- **Fully closed shoes required** - umbrellas not permitted - bring caps, hooded jackets or ponchos instead
- Registration limited to **Cincinnati Div 7 members and their spouse/guest** – adult must accompany those under 18
- **Do not delay in registering** - due to bus restrictions this trip is **limited to the first 44 registrants that sign up!**
- A **waitlist** will be maintained when full - refunds given after registration deadline only if replaced from waitlist
- Participants agree to promptly obey all directives of tour guides and stay with your tour sub-group during group tours
- Cincinnati Division 7 reserves the right to modify or cancel this event, especially due to matters beyond our control

Name(s) \_\_\_\_\_

Address \_\_\_\_\_ City \_\_\_\_\_ State \_\_\_\_\_ Zip \_\_\_\_\_

Home Phone \_\_\_\_\_ Cell \_\_\_\_\_ Email \_\_\_\_\_

Parked Car Make & Model: \_\_\_\_\_ Lic. Plate: \_\_\_\_\_

Total number of persons \_\_\_\_\_ x \$65 ea. = \$ \_\_\_\_\_

Number of minors (under 18 years old) \_\_\_\_\_

Pay by cash, check or money order to: Cincinnati Division 7, NMRA

### Mail to:

Iron Triangle Registrar  
7367 Wheatland Meadow Ct  
West Chester, OH 45069

Further information: John and Ruth Anne Burchnall [burchna@fuse.net](mailto:burchna@fuse.net) Phone: (513) 860-3852



## DIVISION 7 - CLASSIFIED ADS

As a benefit to Division 7 members, the Oil Can will offer to list free Classified Ads to allow members to sell railroad-related items. A few other Divisions offer such a program. The Board has approved a trial of 6 months; after which the program will be re-evaluated. If you have items to sell, please review the Rules, and send an email to [editor@cincy-div7.org](mailto:editor@cincy-div7.org)

### CLASSIFIED AD RULES:

Item(s) must be railroad related.

Seller must be a Member of Division 7 MCR NMRA.

Listing description shall be 30 words or less.

Item(s) can be displayed for a maximum of three (3) months. Oil Can Editor will assign a Listing Number that will include the last month of listing. (E.g., "xx-July 2015" would indicate Listing xx will be listed through the July 2015 Oil Can).

Seller must list name, and either Phone Number and/or Email, so the interested Buyer can contact Seller. It will not be listed without them. **(NOTE: Seller agrees to allow contact information to be published in the Oilcan, which is published on the Internet).**


A single photo may be submitted for each listing.

Limit of three (3) listings from same Seller at any one time.

Seller shall email Oil Can Editor if item is sold so it can be removed from page.

All transactions are between the Buyer and the Seller.

Oilcan Editor reserves the right to edit listing if needed, and will notify Seller of edit prior to publication.

Picture	Description	Price	Name	Phone, or Email	Listing No.
	White Styrofoam Sheets (pellet, not dense) Full and partial sheets up to 48" x 96", 1" to 4" in thickness. Can arrange pick up in Batavia, or at O-Scale Club.	FREE	Frank Koch	fjkoch@hotmail.com 513-324-3781	13-Apr-16
	High Ball N-scale Ballast Dark Gray, 1-lb bags	\$5 each	Frank Koch	fjkoch@hotmail.com 513-324-3781	14-Apr-16
	HO-Scale Westerfield Kit, C & O Modernized 70-Ton Hopper Car Kit #2152 C & O dreadnaught end.	\$25	Bill Doll	513-741-7644	15-Apr-16
	HO-Scale Westerfield Kit, C & O USRA 70-Ton Hopper Car Kit #2101	\$25	Bill Doll	513-741-7644	16-Apr-16
	Binders, Model Railroader & Trains used, but good condition	\$5 each	Dave Puthoff	deputhoff@yahoo.com	17-Apr-16
	DCC Block Occupancy Detectors Built-in Adjustable Time-Delay-Off, Adjustable Sensitivity. 200 ma DC Open Collector & BiPolar Outputs with LED Indicator, 12 vdc. For DCC only.	\$12 each	Dave Puthoff	deputhoff@yahoo.com	18-Apr-16

# LAYOUT VISIT to Dan Mack 's HO Layout



Photos by Bob Shreve



Photos by John Burchnell



# LAYOUT VISIT to Gerry Albers's HO Layout



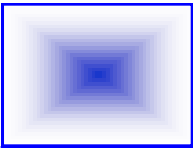
Photo by Bob Shreve



Photo by Bob Shreve



Photos by John Burchnell



# KNAPP'S NOTES

by Bruce Knapp

## American Flyer, Lionel, and Marx, Oh My!

I know I have mentioned our tin-plate heritage before, but it is worth remembering those many great electric trains that introduced us to the hobby. I have a few examples of some of these pioneers in my collection. Pat and I are reminded of the magic of early toy trains each fall, at our annual train show. We have a lot of folks show up at the check-up booth with prized possessions from their past, to see if they still have life. In most cases, a little cleaning, some Knapp-Homan TLC, and lubrication is all that is needed to return the item to operation. The owners then proudly tell us, "This is going under the Christmas tree", and another treasured childhood memory is revisited.

We can thank Joshua Lionel Cohen, and his brilliant gift for promotion and advertising, for the train under the tree concept. This was soon adopted by Ives, American Flyer, and Marx; now, no Christmas tree is complete without an electric (or wind-up) train. Lionel's "bright idea" has spread to many other Christmas displays --- to include museums, shopping malls, private displays, and even entertainment venues (films and television). There is still a subtle attraction to watching a smoke billowing (now even MTH diesels have smoke) with brightly lit cars traveling in a circle, around a beautifully decorated tree.

We have an annual train display set up by Division 7 member, Bill Whittle, in our parish hall, which is very popular with St. James children from 1 to 80+. What's your treasured Christmas Train memory? Mine is an American Flyer 290 freight set.

## Clinics

Clinics and clinicians do a lot to promote the hobby and improve the average modeler's efforts. Division 7 does a lot to continue to improve the state of modeling in this area. I certainly learned a lot from John Listerman's presentation on back drop painting. Over the years, many nationally recognized practitioners in our hobby have inspired me to try new things, or re-do past efforts. Division 7 meetings, region conventions, and national conventions have broadened my knowledge of this wonderful hobby/art form.

William Edwards, esq., ably assisted by Paul Godwin, is currently doing a series of clinics on scenery at Tim's Trains and Hobbies, in Latonia, KY. Bill and Paul are excellent modelers and are also enjoyable clinicians. Let me go on record as stating no one has ever been injured at one of Bill's clinics (as far as we know). The one incident of Bill shooting rockets at another clinician has never been proven.

I would suggest the following, (1) wear your U.K. blue and white, and (2) save any really stupid questions/comments for the end of each clinic. I also would like to make it clear that modeling the Santa Fe is more than just pouring sand on a 4 by 8 sheet of plywood. Seriously, Bill is a good friend and an excellent modeler; attend his scenery clinics, they are well worth your time and effort.

## W.M.P.A. is watching

It has come to our attention that there is still some derogatory comments being made about the wonderful west and its outstanding railroads. Pat Homan, Chuck Endreola, and I are ever vigilant to the slightest indication on negativity about the west. I don't want to alarm anyone, but Chuck's cousin Vinny would like to pay a visit to any of you who don't get the message.

Speaking of message, Russ Poynter told me that were some complaints about January's Raffle. How could there be any complaining, even John Burchnall won (talk about hell freezing over). Cousin Vinnie is also taking over the raffle complaint department, so fell free to complain all you want.

See you next month and "Keep 'm rolling"

*Bruce*

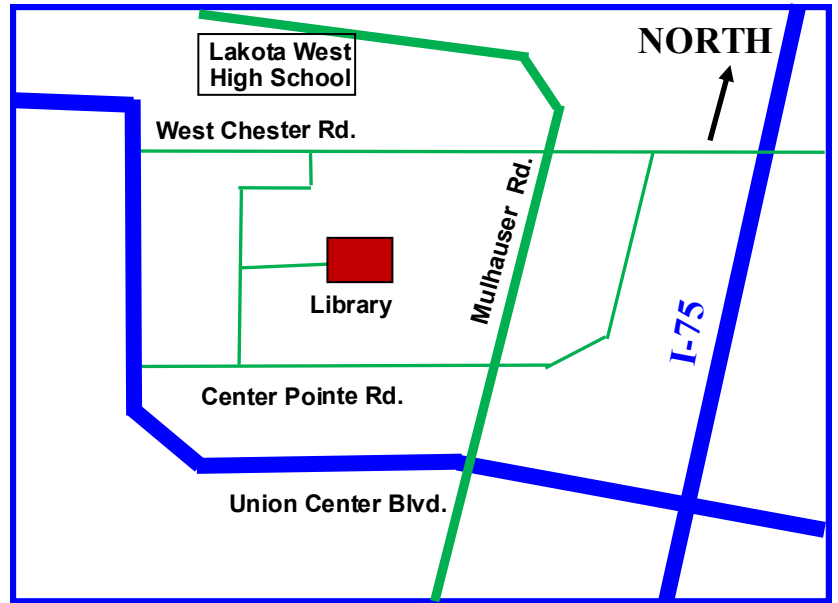
Next Meeting

**2 PM Sunday February 14**

**West Chester Library**  
9363 Center Pointe Drive  
West Chester OH 45069

Directions:

**From I-75:** Exit Union Center Blvd.  
Right to Mulhauser Rd.  
Left to Center Pointe Road  
Library is on your right.



Coming Down the Line

Cincinnati Division 7, MCR, NMRA  
**2016 Schedule**

**NOTE: ALL REGULAR MEETINGS START AT 2 PM**  
(Unless otherwise notified)

<u>Date</u>	<u>Location</u>	<u>Program/Speaker</u>	<u>Layout Visits</u>	<u>Contest Topic</u>
2/14	West Chester Library West Chester	<b>Hocking Valley RR</b> Charlie Atkinson	Sam Parfitt Ed Swain	<u>Models:</u> Hopper Cars <u>Photos:</u> People Working on RR
3/12	<b>NO DIVISION 7 MEETING</b> --- Spring Flea Market at Lakota West Freshman School in West Chester			
4/10	Tower A Cincinnati Union Terminal	Custom Tour of Cincinnati Union Terminal		<u>Models:</u> Maint. of Way Equip. <u>Photos:</u> Maint. of Way Equip.

Around the Division  
2016

- 2/18 **Lebanon Modelers - Lebanon OH**
- 2/20 **Model Railroad Show - Ft. Wright KY**

Region / National  
2016

- 4/28 - 5/1 **Rails to the Capital MCR Convention - Columbus OH**
- 7/3-7/10 **Highball to Indy National Convention - Indianapolis IN**

Modeling Problems? - Ask the Member Aid Committee

Pat Homan (513) 861-2057  
Bruce Knapp (513) 941-2713

Div. 7 Hot Line ....(513) 662-RAIL  
Div. 7 Web Site ....[www.cincy-div7.org](http://www.cincy-div7.org)  
MCR Web Site ....[www.midcentral-region-nmra.org](http://www.midcentral-region-nmra.org)  
PO Box 43401 ..... Cincinnati, OH 45243