



# PCA Newsletter

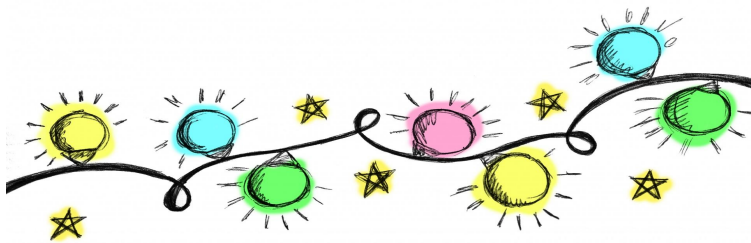
The Plantations Community Association, Inc.



Volume 15 - Issue 4

Published Quarterly

December 2021



## Upcoming Events

Have an event we can include? email [info@plantations1.org](mailto:info@plantations1.org)

**December 11:** Santa visits PI & PII beginning @ 6PM

**December 13:** HOA Meeting @ 7 PM\*

**December 21:** Charlie Brown Christmas @ DHS  
(2 showings at 5 PM & 7 PM)

**December 23 - January 2:** Winter Break (No School)

**January 10:** HOA Meeting @ 7 PM\*

**February 7:** HOA Meeting @ 7 PM\*

\*HOA meetings are held in the Staff Lounge at Woodfield Elementary School. Per MCPS policy, masks are required for in person attendees. Zoom information is also emailed to all members who have an email listed with the HOA. Members are encouraged to participate. We need new ideas to grow and thrive!

## A Star Among Us

Our very own Missy Melkonian is a member of one of the fastest rising acapella groups out there, The Trills. They just opened for Straight No Chaser and we can't wait to see what they will do next. Have you been looking for a fresh new holiday album to mix in with your old standards? Take a moment to check out the new holiday album they just released on Apple Music, Like It's Christmas.

## Get to Know your HOA Covenants



**PCA Covenants [Article VIII, Section 8]:** Prohibit all animals, livestock, and poultry from our properties, except that "dogs, cats and other household pets may be kept", as long as they are not being kept for commercial purposes (for example, they cannot be bred for sale).

**Montgomery County Code [Chapter 5 – Animal Control]:** Chickens and roosters cannot be kept in an aviary (structure that confines/houses the chickens) within 100 feet of an adjacent dwelling. *\*For most or all PCA properties, this means the property is not large enough to allow chickens.*

**For more information or to report a problem:**  
PCA – 301 330 8560 OR [info@plantations1.org](mailto:info@plantations1.org)  
Montgomery County - 311  
Animal Control – 301 279 8000



As the daylight hours fade away earlier and we welcome the holiday season with all the festive light displays, it bears reminding us all to slow down when driving through our community. Please remind your new and younger drivers too. The difference between 25 and 30 mph won't save your commute but it can save a life.

# Community News & Groups

The PCA sends out occasional email notices, to keep you informed of upcoming meetings, announcements and occasional volunteer opportunities. We never share your email address. To be included, please send your email address to: [info@plantations1.org](mailto:info@plantations1.org)

**Facebook Users:** There is a group for **Plantations I and II**. It is not affiliated with the PCA but is a nice way to communicate and keep up with the goings on in the neighborhood.

<https://www.facebook.com/groups/108739809260974>

## Lost Pet Resources



- Damascus MD Lost & Found Pets: [facebook.com/DamascusLostAndFoundPets](https://www.facebook.com/DamascusLostAndFoundPets)
- Montgomery County MD Lost Pets <https://www.facebook.com/MCMDLostPets>
- If your pet is lost, an alert service may be able to help: [www.findtoto.com/pet-alert-services](http://www.findtoto.com/pet-alert-services)

## Dog Walking Safety and Courtesy

While walking your dog, please keep in mind the following, which are **required by County law**:

- Dogs must be leashed anytime they are off your property.
- Dog owners must avoid “unwanted contact” between their dogs and people and other dogs.
- Dog walkers may allow their dogs to “do their business” in the area between the street and sidewalk, or a PCA common area, but the walker must immediately pick up remains. Please always carry, use and properly discard your dog’s “business” bags.
- Dogs and cats 4+ months old require a current rabies vaccination and Co. license.



## Recycling bin busted?

Getting new bins is easy and, whether you use it or not, you pay for that service as part of the “Solid Waste Charge” in your property tax bill. **Don’t let your money go to waste!** Call 311 to have the county replace those broken bins for you.



Are you looking for a great way to meet neighbors and invest in our awesome community? Well have we got the opportunity for you! Our community is always in need of community members who want to get involved from time to time, but might not necessarily be able to commit to a seat on the board. Please email your info to [info@plantations1.org](mailto:info@plantations1.org) if you’d like to join the PCA Volunteer Corps and we will reach out to you when opportunities for community service arise. Activities include things like newsletter delivery and neighborhood clean-up events.

### Current PCA Board

#### Officers:

President – Rod Ibacache  
VP – Michael McMillen  
Secretary – Debbie Diatz  
Treasurer – David Keim

#### Board Members:

Kathy Giles  
Mary Ellen Gillard – ACC Chair  
Shawn Howell  
Joseph Melvin  
Mike Giles



## In Memoriam

We are saddened to share the news of the passing of our longtime PCA Board member and friend, Tony Durso. He served as PCA President from 2009 until 2019. Tony had been battling cancer and recently moved to the

Philadelphia area to be closer to family.

Here is a link to his obituary:

<https://www.legacy.com/amp/obituaries/tributes/199578871>

# THE FUN STUFF

## Taco Soup

A tasty twist on Taco Tuesday!

### Ingredients

- 1 taco seasoning mix packet
- ½ medium onion diced
- 1 can corn
- 1 can hot chopped green chilies
- 2 cans 24 ounces of water
- 1 pound cooked ground beef fat drained
- can black beans 12 ounce
- 1 can kidney beans 12 ounce
- 1 can diced rotel tomatoes and green chiles
- 1 can diced stewed tomatoes
- **Optional toppings: sour cream, shredded cheddar, tortilla chips, diced onion, avocado**

### Preparation

1. In a large pot, brown beef and onions together.
2. Once cooked, drain off the fat.
3. Add remaining ingredients & stir to combine
4. Cook 45 minutes, stirring occasionally
5. Serve topped with: sour cream, chopped onion, shredded cheddar cheese and tortilla chips

## Pebble Penguins



### Supplies:

- Stones – any flat stones will work
- Black, orange and white acrylic paint
- Watered down Elmer's glue

### Steps:

1. Paint one side of each stone in black acrylic paint, place it on a baking tray with baking paper to dry.
2. Paint the other side of each stone
3. Paint a circle for the tummy using white acrylic paint
4. Use a small paint brush, or toothpick, dipped in white paint to create two eyes.
5. Dip the end of a thin paintbrush into the black paint to create a pupil in each eye
6. Use orange acrylic paint to create a triangular beak
7. Use a small paint brush, or toothpick, dipped in the orange paint, make three joined up circles for each penguin foot
8. Cover one side of the penguin in watered down PVA glue
9. Cover the other side in watered down PVA glue.

Send us a message at [info@plantations1.org](mailto:info@plantations1.org), subject "Penguin Hunt" and we will post your sightings in the next newsletter!

### Joke of the day:

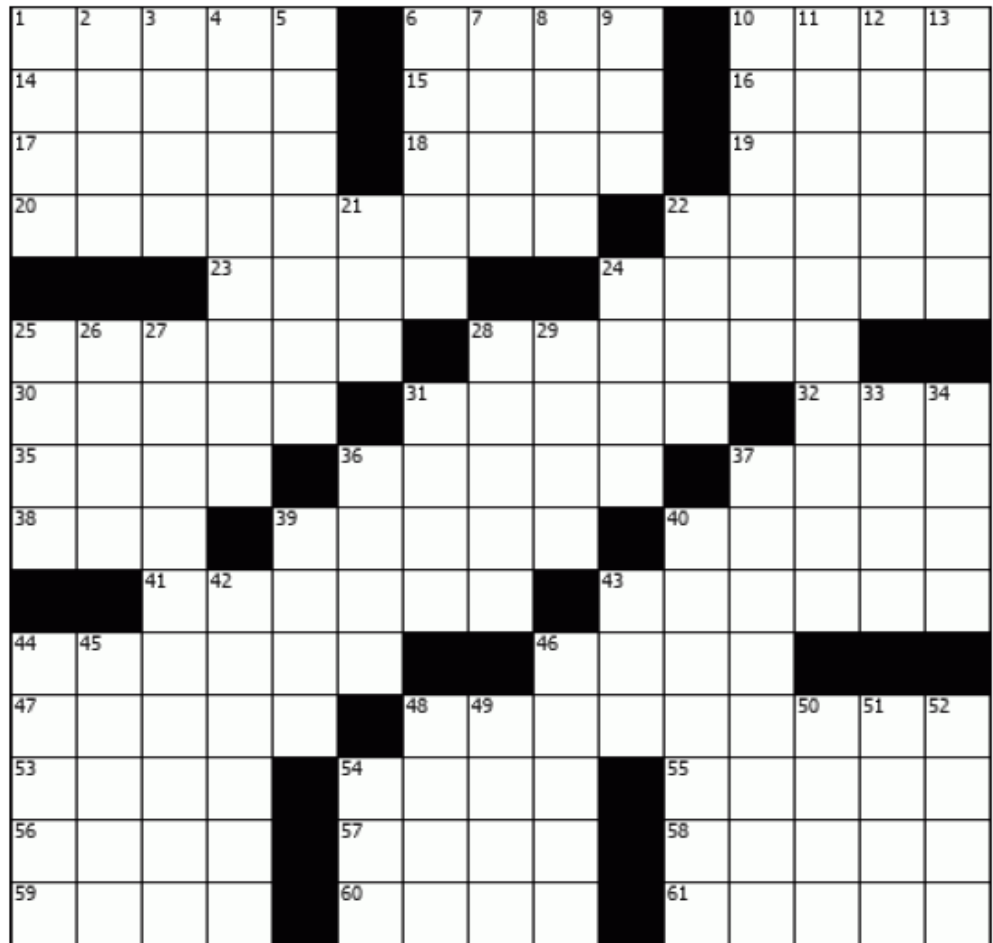
What happens when dinosaurs drive cars?"

"Tyrannosaurus wrecks"

# THE FUN STUFF

## Across

1. Pig language?
6. Facts and figures
10. Winter Palace ruler
14. Totally pointless
15. Elevator man
16. Britain's last Stuart monarch
17. Proverbial backbreaker
18. Easy victory
19. Lewis' "\_\_\_ Street"
20. Suit pattern
22. Mental slip
23. Jillions
24. Problem caused by moisture
25. Belafonte song fruit
28. Star of mummy movies
30. \_\_\_-Unis
31. Do poltergeist work
32. Jack Horner's last words
35. Buffalo's lake
36. Wingless insect
37. Weekly shout for some
38. Good buddy
39. Nuptial lane
40. Mob heavies
41. Young hen
43. Taken care of
44. Like foamy seas
46. Pitcher's target
47. Dolly's greeting
48. Paper carrier?
53. Pelvic bones
54. Make cents
55. Cornered
56. Cause type
57. Shells and such
58. "Chain Gang" singer
59. Spillane novel title start
60. Word with box or boy
61. Tense (with "up")



## Down

- |                                |   |                             |
|--------------------------------|---|-----------------------------|
| 1. Thpeak like thith           | 21. Gene material, briefly                  | 39. Brand for Bowser        |
| 2. Prefix with hero or matter  | 22. Pre-discount price                      | 40. Beatles' hit            |
| 3. Mountain lake               | 24. Zebra feature                           | 42. Awake far past midnight |
| 4. Really perturbed            | 25. Road Runner's taunt halved              | 43. Sample gingerly         |
| 5. Fig treats                  | 26. Razor brand                             | 44. Camp cook's meal        |
| 6. Day of movies               | 27. Cosmetics purchase                      | 45. Spartan serf            |
| 7. Surmounting                 | 28. Quake locale                            | 46. Bouncer's victim        |
| 8. Test proctor's call         | 29. Artful dodge                            | 48. Crooner Perry           |
| 9. Cleo's doom                 | 31. Something that winds up with homeowners | 49. It moves stars          |
| 10. Hot treat                  | 33. Tea flavoring                           | 50. "___ Named Sue"         |
| 11. Mouth-shaped garden flower | 34. In that case                            | 51. Libertine               |
| 12. Flavorful seed             | 36. Easter decoration                       | 52. Unnatural, as hair      |
| 13. Rejuvenate                 | 37. Like some confrontations                | 54. Word with ice or salary |

Solution at <https://plantations1.org/> . . .



# Advertisements

HOUSING PRICES ARE UP/INVENTORY IS DOWN/IF YOU ARE THINKING OF SELLING . . .



## NOW MAY BE THE TIME!

Lori Connor



LORI CONNOR, REALTOR  
Re/Max Realty Centre  
Office: 301-591-3920  
Cell: 301-801-9600

20 years experience in Damascus & Gaithersburg

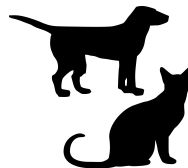
Your very affordable ad reaches **406** homes! Place an ad, **watch your business grow**, or **sell unneeded items, or celebrate upcoming events!** For more information, e-mail: [info@plantations1.org](mailto:info@plantations1.org). The PCA newsletter is published in February, May, August, and November.

**Full Page \$28.00 - Half Page \$16.00 - Quarter Page \$9.00 - Business Card \$5.00**



**Lawn Mowing & Trimming  
Local High School Students  
Aalim and Alex**

**Please call or text 240-566-6070  
or email [kilawnmowing@gmail.com](mailto:kilawnmowing@gmail.com)**



**Going on vacation? Have pets or plants that need care? My name is Jonathan, I'm 15 & an experienced sitter here to help.**

**Give me a call or text at 240-308-8211.  
References available upon request.**

## Free business card sized ads for young entrepreneurs

If your child would like to earn money doing work for neighbors, we will gladly publish their information. Contact the PCA, if you would like to have their name and service listed here free of charge. Applies to neighbors 17 and younger. email [info@plantations1.org](mailto:info@plantations1.org)

**Plantations Community Association, Inc.**  
**Budget for Fiscal Year 2022 <sup>1</sup>**

The PCA Board has approved a budget for 2022. The PCA works hard to control expenditures, but increasing costs have led to the decision to increase the assessment levels. This is the first increase since 2019. The detached-house level will increase from \$172 to \$189, and the town-house level will increase from \$238 to \$261.

<b>Budget Category</b>	<b>Budgeted Amount (dollars)</b>
Accounting Services	5,325
Administrative & Miscellaneous	516
Voice-Mail Services	869
Electric Service	644
Insurance Coverage	2,292
Legal Fees - Collection Services <sup>2</sup>	4,385
Legal Fees - General	700
Maintenance - General	8,125
Maintenance - Landscaping Contracts	32,637
Maintenance - Snow Removal	10,500
Meeting Room Rental	444
Postage & Stationary	824
Printing & Copying	786
Reserve Fund Contribution - General Fund <sup>3</sup>	6,000
Reserve Fund Contribution - Town-House Fund <sup>3</sup>	4,320
Staff Training	355
Taxes & Fees - County, Montgomery, MD	4,211
Taxes - State of Maryland	48
Taxes - Federal	174
Trash Removal & Litter Clean-Up	660
Community Events	200
Internet Domain, Website, E-Mail, Data Services	1,762
<b>Total Budgeted Expenses:</b>	<b>85,777 (-)</b>
<b>Amount of Resident Assessment:</b>	<b>81,054 (+)</b>
<b>Projected Assessment Not Collected (5%):</b>	<b>4,053 (-)</b>
<b>Projected HOA Document Sales Income:</b>	<b>300 (+)</b>
<b>Projected Park Rental Income:</b>	<b>80 (+)</b>
<b>Projected Newsletter Advertising Income:</b>	<b>30 (+)</b>
<b>Projected Interest Income:</b>	<b>15 (+)</b>
<b>Projected Funds Carried Over from 2021:</b>	<b>8,351 (+)</b>
<b>Projected Net (Income – Expenses):</b>	<b>0</b>

<sup>1</sup> The PCA Fiscal Year 2022 budget covers the period from 01 Jan 2022 through 31 Dec 2022.

<sup>2</sup> A portion of collection legal fees are usually recovered when a property owner pays the outstanding balance on an account.

<sup>3</sup> Not a true expense, but a transfer to a special-use account.