



# CrystalBridge – Your Command Center for Enterprise Transformations

Acquisitions, mergers, divestitures, restructurings, and modernizations. Every transformation disrupts the enterprise technology landscape and puts your data at risk. Yet, transformations have become the “new norm” for the enterprise. Do you have the tools and information you need to rapidly master the complexities of transformations? To perform them quickly, securely, and efficiently? In an easily repeatable way?

CrystalBridge software from SNP scans and analyzes your SAP® landscape, revealing it to you in detail with an easy-to-consume graphical view. Using the CrystalBridge “command center,” you can interact with your landscape, analyzing your current state and simulating proposed changes. As you prepare for your transformation, you can access detailed recommendations and best practices within CrystalBridge distilled from the experience of thousands of enterprise transformation projects.

SNP has scanned over 5,000 SAP system landscapes, and automated over 7,000 transformation projects, including SAP S/4HANA®, mergers, acquisitions, divestitures, restructurings, and cloud migrations.

# Take an Illustrated Tour of CrystalBridge

---



CrystalBridge is the easiest way for you to take control of every transformation, securely, efficiently, and repeatably. These are the capabilities it places into your hands:

- **Analyze** – Scan, profile, and compare structure, data, and connections throughout your software landscape
- **Modernize** – Move enterprise applications to more efficient platforms to maintain a competitive edge – and do so faster, with lower risk and less downtime
- **Transform** – When entire organizations must be transformed under tight deadlines, you can direct the project execution from CrystalBridge
- **Secure** – Achieve SAP security in the age of hacking, GDPR, and cloud by knowing exactly what is within your landscape, along with real usage data
- **Operate** – Operate complex SAP landscapes more efficiently with insights and best practices from CrystalBridge
- **Predict** – Preserve valuable analytics data during transformations with a unique selective migration ability

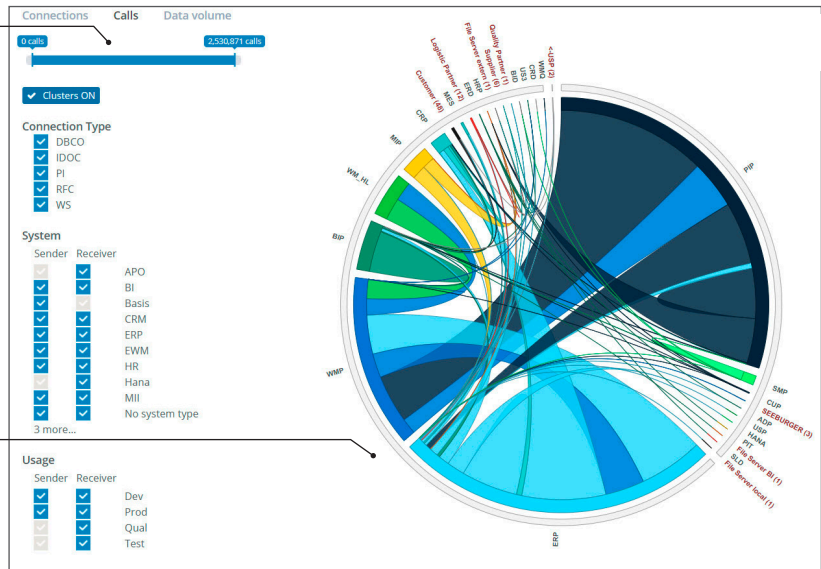
### STEP 1: Know Your Interfaces

Each interface is a window into your system landscape and its precious data – windows that must be identified and monitored for security and compliance. And they may number in the thousands.

Keeping accurate, up-to-date documentation of interfaces is an incredibly difficult task. During your transformation journey, unused or little-used interfaces are at risk of being overlooked until the testing phase of the project, or even after go-live.

CrystalBridge identifies every interface connected to the source ERP system in a view that can be filtered to focus on interface usage by volume (in this example, data is filtered by the volume of calls), by connection type, by system module, and usage by production or non-production environments.

The data in this graphical view can be filtered instantly, and informative pop-ups and drill-downs are just a click or hover away.



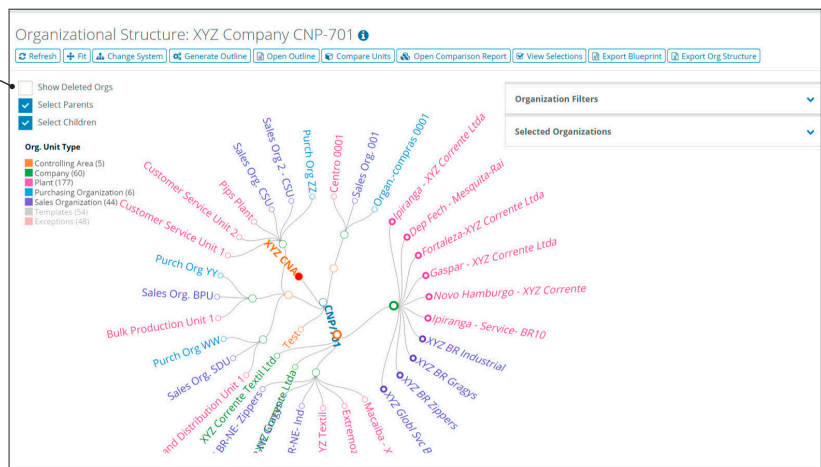
### STEP 2: Know Your Organizational Structure

Your transformation will likely impact your enterprise in very different ways across your organizational structure. CrystalBridge identifies the details of that structure and presents it for you in a graphical way, including dependent relationships.

You can interact with the data and select the desired organizational units for the transformation phase you are analyzing.

CrystalBridge automatically builds dependencies up and down the hierarchy, giving you complete command and control.

In this view parent and children organizations are shown, with deleted units suppressed.

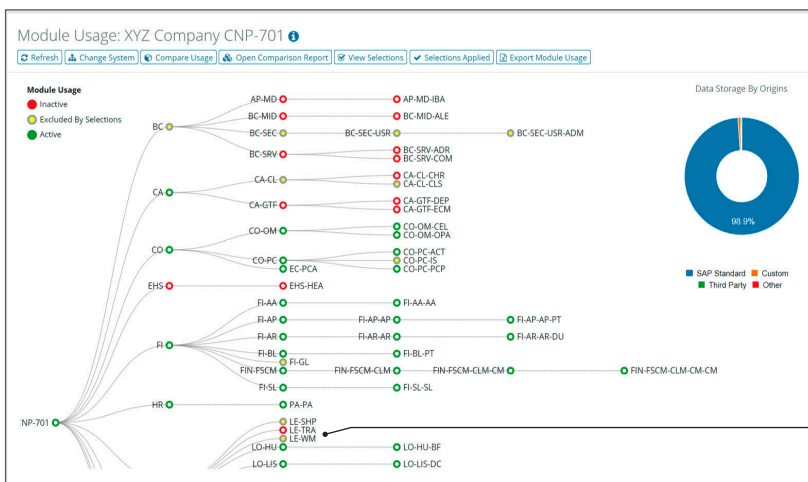


### STEP 3: Know Your Business Processes

Your goal is to produce a system with all necessary processes fully operational. CrystalBridge illustrates the impact of data selections on your processes, so you can accurately assess the current state as well as simulate potential outcomes, giving you an easy way to command the details of your transformation project.

The data is color-coded for added clarity:

- **Green** indicates applications that are active in the dataset you've currently selected
- **Red** indicates those that are unused in the entire system
- **Yellow** indicates applications that are used in the SAP system but not in the selected dataset

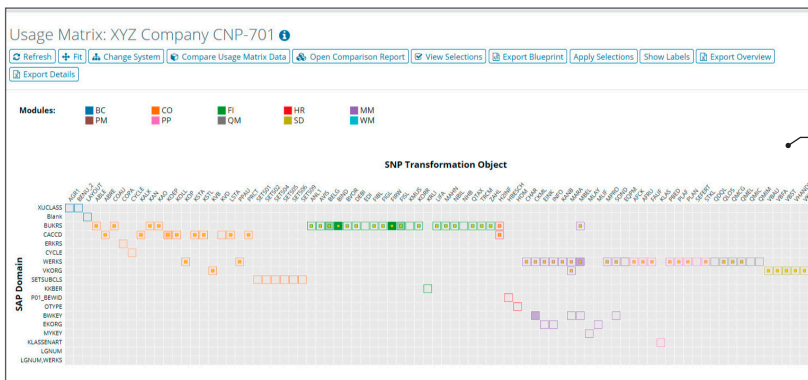


Here we can see that warehouse management will not be present in the selected dataset for a carve-out transformation. Did we expect to manage inventory in the target system? Will the buyer have a warehouse? CrystalBridge guides you to the best decisions by giving you an easy way to see their impacts in advance.

### STEP 4: Know Your Data

At the heart of every SNP transformation is our ability to view and migrate your data as a complete business object.

CrystalBridge creates a unique, interactive view of these business objects allowing you to see the data intensity and objects as they are impacted by the organizational units that are in scope for your transformation.



This tabular view shows actual usage of master and transactional data.

After understanding the impact at a business object level, you can then drill down more deeply into each object.

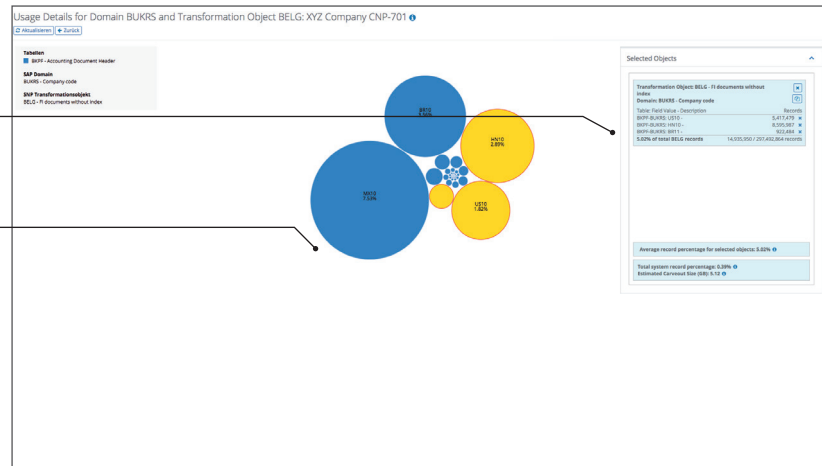
CrystalBridge details each object for the organizational units you select, and predicts the size of your target database. This provides information on environment planning, disaster recovery, and HANA sizing.

You can further interact with your selections at the object level and refine the scope of your transformation even more.

When you are in command of your data, you will have complete control of your transformation.

Each object is represented graphically in a view that is instantly updated with each selection.

These objects may be selected or deselected dynamically.



## STEP 5: And Then, Migrate

Once your analysis and simulations are complete, you will have blueprinted your transformation project.

That blueprint can be exported from CrystalBridge into SNP Transformation Backbone – a software product that automates the execution of transformation projects from the source to the target.

```
<?xml version="1.0" encoding="UTF-8" standalone="true"?>
<blueprint>
  <orgUnit type="KOKRS" name="BR00" description="XYZ (BR)">
    <Object name="ABRE" description="Settlement documents" application="CO" count="77570"/>
    <Object name="H2INF" description="HCM Person data (infotypes)" application="HR" count="170"/>
    <Object name="KALK" description="Cost estimate" application="CO" count="4988643"/>
    <Object name="KOEP" description="Single items" application="CO" count="7657240"/>
    <Object name="KOLL" description="Cost and activity accounting" application="CO" count="1288"/>
    <Object name="KSTA" description="Cost element master data" application="CO" count="1221"/>
    <Object name="KSTL" description="Cost centers" application="CO" count="905"/>
    <Object name="LSTA" description="Activity-related master data" application="CO" count="5"/>
    <Object name="PRCT" description="Profit centers" application="CO" count="46"/>
  </orgUnit type="BUKRS" name="BR10" description="XYZ Corrente Ltda">
    <Object name="ABLE" description="Reconciliation ledger" application="CO" count="8377"/>
    <Object name="ANL1" description="Assets master records and transaction date" application="FI" count="3633"/>
    <Object name="AVIS" description="FI advise" application="FI" count="32"/>
    <Object name="BELG" description="FI documents without index" application="FI" count="10598717"/>
    <Object name="BIND" description="FI documents indices" application="FI" count="53568254"/>
    <Object name="BVOR" description="FI document parking" application="FI" count="31"/>
    <Object name="COAU" description="CO orders" application="CO" count="203"/>
    <Object name="DEBI" description="FI customer data" application="FI" count="23977"/>
    <Object name="FIBL" description="FI bank accounting" application="FI" count="137457"/>
    <Object name="FIGL" description="FI general ledger accounting" application="FI" count="21549"/>
    <Object name="FIRW" description="FI accounting integration" application="FI" count="68295205"/>
    <Object name="FISL" description="FI special purpose ledger" application="FI" count="9266749"/>
    <Object name="H2INF" description="HCM Person data (infotypes)" application="HR" count="170"/>
    <Object name="KAN" description="CO values on assets" application="CO" count="210"/>
    <Object name="KAO" description="CO values on reconciliation objects" application="CO" count="47"/>
    <Object name="KORR" description="FI correspondence" application="FI" count="9"/>
    <Object name="LIFA" description="FI vendors" application="FI" count="6642"/>
    <Object name="MAHN" description="FI dunning" application="FI" count="827"/>
    <Object name="MBEL" description="Material doc./ inventory doc./ invoice doc." application="MM" count="7632"/>
    <Object name="NBIL" description="FI adjustment financial statement" application="FI" count="62198"/>
  </orgUnit type="BUKRS" name="BR10" description="XYZ Corrente Ltda">
  </orgUnit type="BUKRS" name="BR10" description="XYZ Corrente Ltda">
</blueprint>
```

# Why CrystalBridge?

---



## **Thrive in Complexity**

Complex multi-system landscapes can take years to understand and reconcile in a transformation. CrystalBridge has reduced these times by over 75%. For a large landscape of 80 systems, this results in a savings of over \$1,000,000 and over 60 person-months of effort.

## **Accelerate Digital Transformation**

With CrystalBridge predictive analytics, transformation blueprints that took days to create and document are completed within minutes with significantly fewer errors. In one case, 90% of a global manufacturer's blueprint was completed in 15 minutes.

## **Create Transformation Content**

Creation of transformation content can take months, especially when manual resources are used. With CrystalBridge, the time to generate transformation rules is reduced by 50%.

## **Visualize Outcomes**

The visual exploration possible with CrystalBridge can uncover many hidden optimization opportunities. For example, unused legal entities that cost over \$100,000 per year to maintain can be easily identified and excluded from the migration.

## **Plan for the Future**

Identify usage patterns and opportunities that can lead to the retirement of data and customizations. In addition, "Know Before You Go" mapping of your existing functionality can save months of analysis time.

## ABOUT SNP

SNP helps organizations transform their business models and use new technologies. Its software and services make it easier to implement technical or commercial changes in global business applications.

CrystalBridge® and SNP Transformation Backbone® constitute a world-leading transformation software platform, enabling SNP customers to analyze, apply, and track changes in IT systems with automated processes. This significantly improves quality while making transformation projects faster and more cost-effective.

The SNP Group is headquartered in Heidelberg, Germany, and employs over 1,350 people worldwide. It serves multinational companies in all industries. More information is available at [www.snpgroup.com](http://www.snpgroup.com).

For more on CrystalBridge, the command center for transformation projects, visit: <https://www.snpgroup.com/en/crystalbridge>

For more on SNP's BLUEFIELD™ approach to SAP S/4HANA® migrations, visit: <http://software.snpgroup.com/bluefield>

