



# VOTCO

BRINGING YOU TOGETHER



A TRUSTED PARTNER OF

OLIVER + BATTLE

## SUPERMILL PLUS®

*Continuous Milling and Dispersing*

- ✓ *Wetted materials designed for anti-abrasion and anti-corrosion*
- ✓ *Flow rates up to 1000 g/h according to model and product type*
- ✓ *Flexible design allows you to adjust settings and optimize your process for maximum efficiency*
- ✓ *Efficient processing of both small and large batches*
- ✓ *Rotor speed range adjustable by frequency converter between 7 and 13 m/s*
- ✓ *High density grinding elements*
- ✓ *Static separator screen with large outlet surface (Cartridge type)*
- ✓ *Grinding elements extraction system around the separator screen*
- ✓ *Cooling system of the grinding chamber*
- ✓ *Pressurized and cooled process chamber with double mechanical seal*



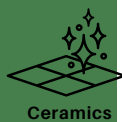
Minerals



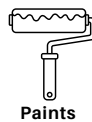
Pharma



Confections



Ceramics



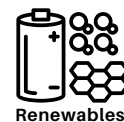
Paints



Inks



Personal Care



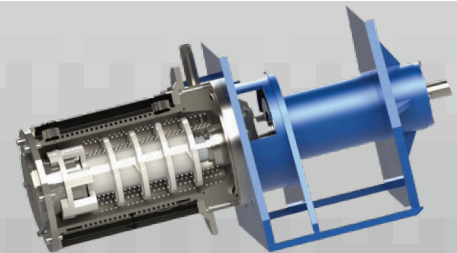
Renewables



Agro

The heart of the Supermill Plus® lies in its innovative large-diameter stationary media screen. This robust component unlocks unparalleled performance and efficiency, making it the ideal choice for diverse applications requiring ultrafine particle sizes.

Meticulously designed to separate materials with unyielding accuracy. This is the essence of the Supermill Plus®'s screen. As material enters its expansive interior, it encounters a meticulously crafted mesh, filtering out unwanted particles and allowing only the desired, microscopic sizes to pass through.



## CONTROL OPTIONS:

### S CONTROLS

Standard Push Button Panel Allows manual operation of the mill.

Display Parameters \* Automatic Parameter Control \* Auto Formulation with Display \* Programmable Power Meter (Kw) (optional) \* Timer (optional) \* Auto Temperature \* Auto Speed Control

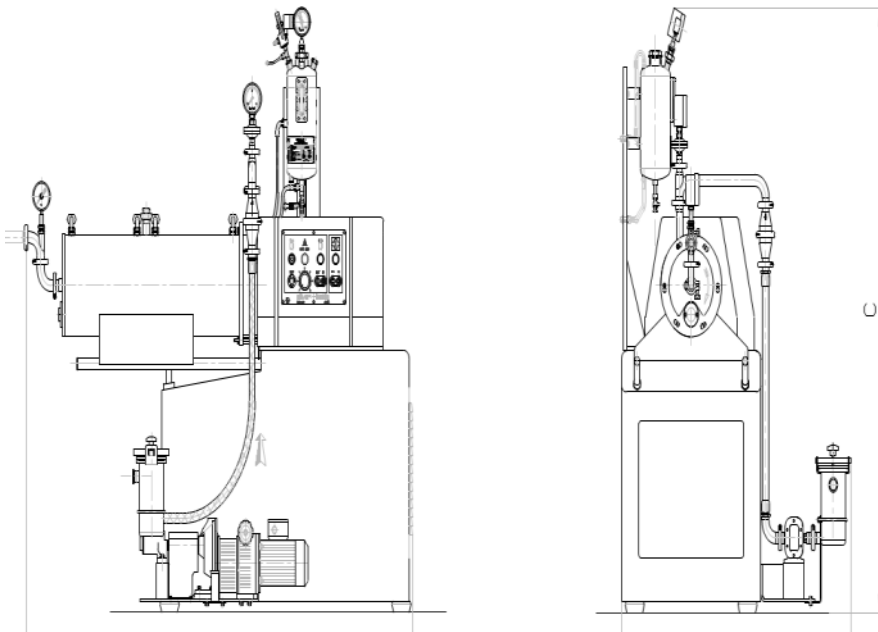
### CP CONTROLS

Digital Signals + Software + Touch Screen:

Display Parameters \* Automatic Parameter Control \* Auto Formulation with Display \* Programmable Power Meter (Kw) \* Timer Auto Temperature \* Auto Speed Control \* Management and Operation with manufacturing recipes \* Machine set-up \* Operation supervision \* Maintenance monitoring.

## TECHNICAL SPECIFICATIONS :

MODEL	SMP-5	SMP-15	SMP-30	SMP-45
GRIND CHAMBER VOLUME (L)	5.7	13.2	27.7	42.5
ROTOR SPEED (M/S)	7-13/S	7-13/S	7-13/S	7-13/S
POWER (HP)	15/20	25/30	30/40	50/60
WEIGHT (LBS)	2300	2500	3000	3200
DIMENSIONS (IN.)				
A	58.27	65.16	95.67	88.19
B	44.49	44.49	51.97	51.97
C	75.39	75.39	75.20	75.20



**CONTACT US TODAY  
TO LEARN MORE  
ABOUT THE  
SUPERMILL PLUS AND  
HOW IT CAN  
REVOLUTIONIZE  
YOUR MILLING OPERATIONS**