



**EN.DESIGN**  
Architecture & Design



**EN.DESIGN**

Architecture & Design

[endesign@endesignco.com](mailto:endesign@endesignco.com) | [www.endesignco.com](http://www.endesignco.com)

EN.DESIGN is an architectural firm based in Beirut, Lebanon, with a widespread presence extending to the Middle East and Africa. Our multifaceted services encompass architecture, interior design, structural engineering, MEP systems, project management, and end-to-end quality control.

From the very inception of an idea to the final project delivery, EN.DESIGN consistently upholds exceptional performance standards, ensuring the highest quality at every stage of project design and execution. This commitment is underpinned by meticulous project planning, efficient organization, and rigorous follow-up protocols. We are dedicated to adhering to predefined budgets and timelines, optimizing resource utilization, and fostering seamless coordination among all stakeholders.

At EN.DESIGN, our unwavering dedication is to exceed customer expectations by delivering turnkey quality projects that reflect our commitment to excellence. We are committed to forging ahead on our path of continuous improvement and excellence, all while providing outstanding service to both our current and prospective clients.

*Nadia Itani*



## Our Vision

To become one of the leading architectural firms in creative design solutions that resolve our clients' social, environmental, and economic needs.

## Our Mission

We deliver a problem-solving design by carefully paying attention to our client's needs. We develop innovative, sensible, and sustainable solutions that are practical. We lead our clients through the collaborative design process and offer them the best value for their money.

## Our Purpose

To serve our clients with a reliable and approachable design that comes from attentive consultations and thoughtful answers to realize the projects that they desire. We present a solid solution that accounts for monetary savings whilst producing the best result.

## Our Clients

Our clients worldwide range from individuals to industries.

## Architecture & Design Services

- Architectural Design
- Urban Planning
- Interior Design
- Landscape Design
- Execution File
- Nadia Itani Furniture Line:
  - Furniture Design
  - Furniture Supply

## Management & Supervision

- Project Management
- Site Supervision
- Quality Control



## Committed to ESG Excellence

At EN Design, we're not just architects; we're stewards of a sustainable and inclusive future. Our commitment to Environmental, Social, and Governance (ESG) principles is ingrained in every project:

**Sustainable Design:** Minimizing environmental impact with energy-efficient solutions and eco-friendly materials.

**Community Engagement:** Actively involving local communities to create designs that enhance social well-being.

**Diversity and Well-being:** Fostering a workplace that values diversity, innovation, and employee well-being.

**Ethical Governance:** Upholding the highest standards of transparency, accountability, and compliance.

**ESG Reporting:** Regularly sharing our progress through comprehensive reports, demonstrating transparency and accountability.

Choose EN Design for designs that not only captivate but contribute to a more sustainable, inclusive, and ethically governed world.

# Landscape.01





# 01 Landscape

|                |                  |
|----------------|------------------|
| Client         | Ganjan - Gate 2  |
| Size           | 3200 m2          |
| Location       | Erbil, Kurdistan |
| Duration       | 60 Days          |
| EN.DESIGN Role | Design           |

## The AIM

- Elevate the lifestyle of Ganjan City to meet the city owners' aspirations.
- Create a unique experience for people in X City transform X City into a luxury destination.

## The Focus

- Renovate existing zones with the lowest cost possible.
- Concentrate on small elements to make a massive difference.
- Turn the street into a revenue-generating opportunity.
- Create relaxation and luxury zones for all types of people.
- Turn X City into a thriving community.





# 01

## Landscape

|                |                  |
|----------------|------------------|
| Client         | NA               |
| Size           | 800 m2           |
| Location       | Erbil, Kurdistan |
| Duration       | 60 Days          |
| EN.DESIGN Role | Design           |

### The AIM

- To create a beautiful landscape public garden with vibrant colors and water features
- To attract people and provide a unique and enjoyable experience.

### The Focus

- Location Selection: Choose a suitable location that is easily accessible to the public
- Landscape Design: Incorporate a mix of natural and man-made elements, such as ponds, meandering pathways, and themed gardens.
- Vibrant Plantings: Select a wide variety of plants with vibrant and colorful foliage, flowers, and textures. Consider native plants that thrive in your region's climate. Create flower beds, border plantings to infuse color throughout the garden.
- Water Features: Integrate water features such as fountains, ponds, streams, and waterfalls. These not only add visual appeal but also provide soothing sounds and a sense of tranquility.
- Seating Areas: Place comfortable benches throughout the garden to encourage visitors to sit, relax, and enjoy the surroundings.
- Art Installations: Incorporate art installations like sculptures, mosaics, and kinetic art pieces that enhance the aesthetic and stimulate the senses.
- Interactive Elements: Create interactive elements like stepping stones across small streams, wind chimes, or musical features that engage visitors and make their visit memorable.





# 01 Landscape

|                |                  |
|----------------|------------------|
| Client         | NA               |
| Size           | 800 m2           |
| Location       | Erbil, Kurdistan |
| Duration       | 60 Days          |
| EN.DESIGN Role | Design           |

## The AIM

- To create a beautiful landscape public garden with vibrant colors and water features
- To attract people and provide a unique and enjoyable experience.

## The Focus

- Location Selection: Choose a suitable location that is easily accessible to the public
- Landscape Design: Incorporate a mix of natural and man-made elements, such as ponds, meandering pathways, and themed gardens.
- Vibrant Plantings: Select a wide variety of plants with vibrant and colorful foliage, flowers, and textures. Consider native plants that thrive in your region's climate. Create flower beds, border plantings to infuse color throughout the garden.
- Water Features: Integrate water features such as fountains, ponds, streams, and waterfalls. These not only add visual appeal but also provide soothing sounds and a sense of tranquility.
- Seating Areas: Place comfortable benches throughout the garden to encourage visitors to sit, relax, and enjoy the surroundings.
- Art Installations: Incorporate art installations like sculptures, mosaics, and kinetic art pieces that enhance the aesthetic and stimulate the senses.
- Interactive Elements: Create interactive elements like stepping stones across small streams, wind chimes, or musical features that engage visitors and make their visit memorable.





# Residential.02



# 02

# Residential

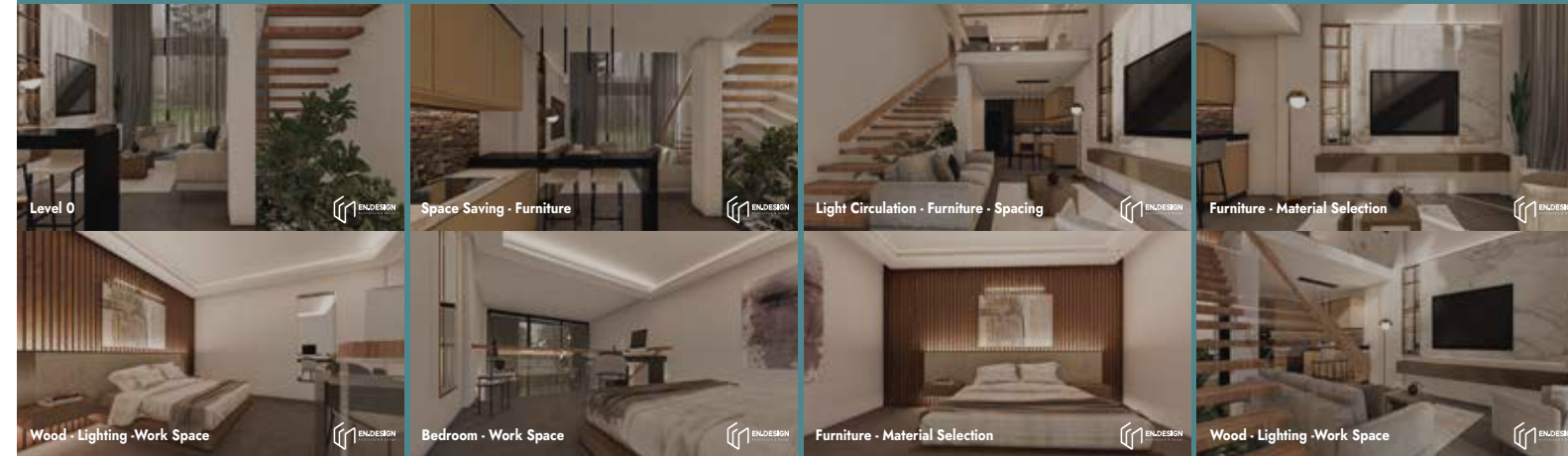
|                |                  |
|----------------|------------------|
| Client         | Loft X           |
| Size           | 80 m2            |
| Location       | Erbil, Kurdistan |
| Duration       | 7 Days           |
| EN.DESIGN Role | Design           |

## The AIM

- Create a comfortable and appealing living space for business travelers staying for short periods.
- Ensure business travelers have productive and pleasant experience during their stay.
- Cater the specific needs of this target audience.

## The Focus

- To choose a convenient location, ideally close to business districts, popular restaurants or attractions, and proximity to the airport.
- To provide spacious and well-appointed rooms with a comfortable bed, high-quality linens, and blackout curtains to ensure a good night's sleep.
- To offer a selection of room types to accommodate different preferences, including suites for those who need extra space to work or relax.
- To ensure excellent soundproofing to minimize noise disruptions.
- To include a well-lit and ergonomic workspace in each room, complete with a comfortable chair, power outlets.
- To offer a dining area.
- To equip rooms with smart TVs, streaming services, and high quality audio systems.
- To implement eco-friendly practices, such as energy-efficient lighting.





# 02

# Residential

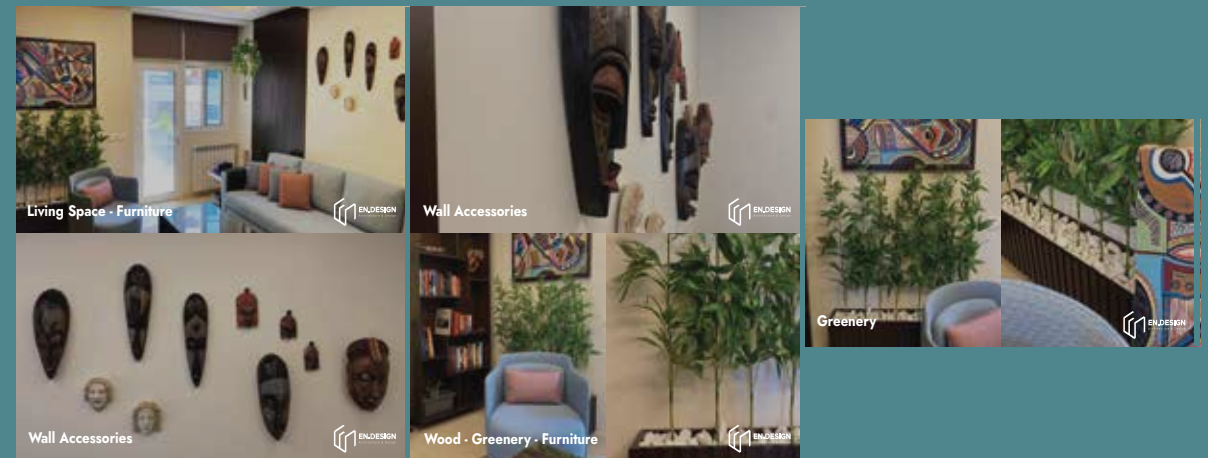
|                |                              |
|----------------|------------------------------|
| Client         | E.Azar                       |
| Size           | 25 m2                        |
| Location       | Metn, Lebanon                |
| Duration       | 12 Days                      |
| EN.DESIGN Role | Furniture Design & Execution |

## The AIM

- Create a modern African living room

## The Focus

- Create a comfortable and appealing living space for a E.Azar.
- Incorporate African art and accessories with the design.
- Indulge greenery with the space.
- Cater the specific needs of the client.



# 02

## Residential

|                |                 |
|----------------|-----------------|
| Client         | A. Jammal       |
| Size           | 22 m2           |
| Location       | Beirut, Lebanon |
| Duration       | 20 Days         |
| EN.DESIGN Role | Design          |

### The AIM

- Renovate an existing kitchen to an efficient modern kitchen.
- Improve the functionality of the space but also enhances the overall aesthetics.

### The Focus

- Select kitchen layouts include galley, L-shaped, U-shaped, and open-concept designs.
- Select materials and finishes that match your design vision and budget.
- Consider cabinetry space and appliances needed.
- Main kitchen material (like wood, laminate, or metal).
- Countertops: Options include granite, quartz, marble, butcher block, and laminate.
- Flooring: durable and easy-to-clean materials like hardwood, tile, or vinyl.
- Backsplash: tiles, glass, or other materials that complement your overall design.
- Lighting: Plan for ambient, task, and accent lighting to create a well-lit space.
- Finishing Details (cabinet hardware, faucets, sinks, and light fixtures).





# 02

# Residential

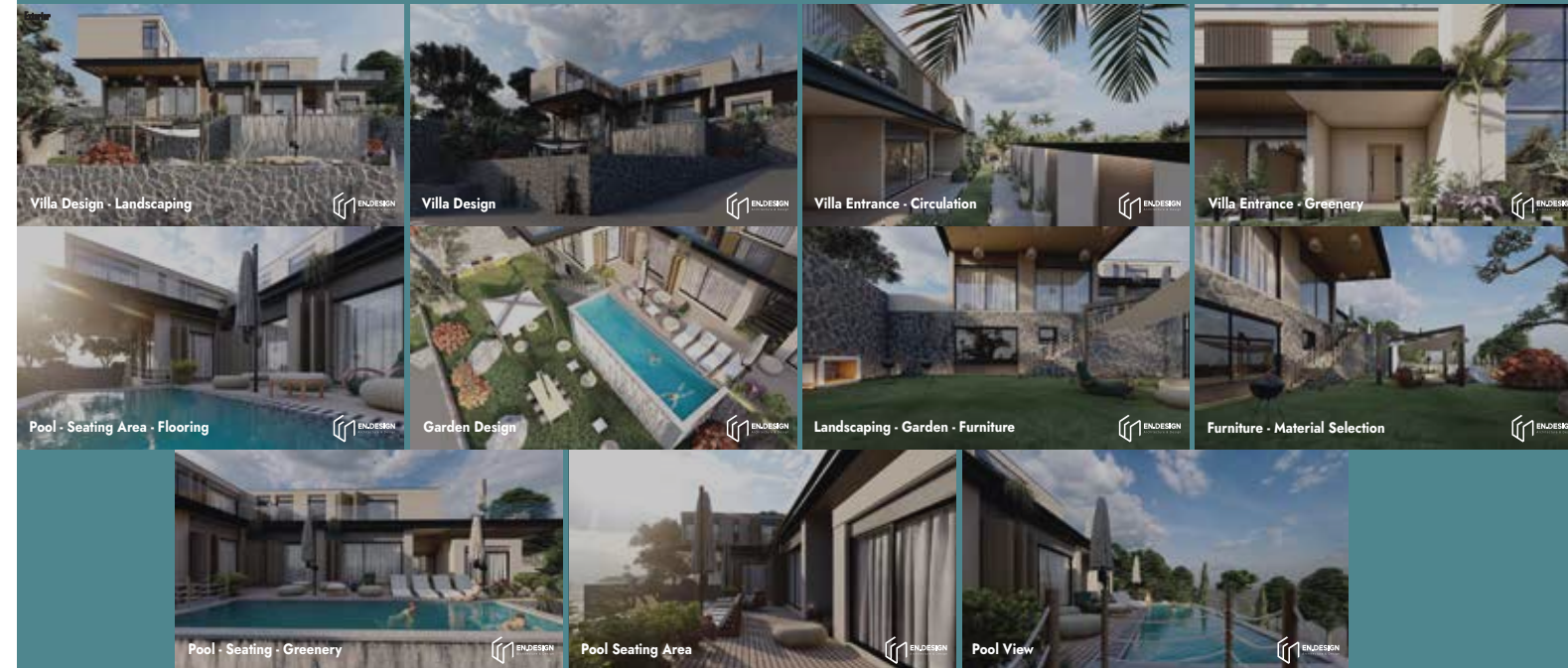
|                |                |
|----------------|----------------|
| Client         | J.El Hajj      |
| Size           | 1100 SQM       |
| Location       | South, Lebanon |
| Duration       | 90 Days        |
| EN.DESIGN Role | Design         |

## The AIM

- Create an intimate feel in the house.
- Serve the need of a family of 5
- Create a summer escape for the family.

## The Focus

- Comfort: Prioritize comfort in your furniture choices.
- Durability: Summer houses are often exposed to the elements, so choose furniture and decor that can withstand sun, rain, and humidity. Materials like aluminum, stainless steel, and resin wicker are durable choices.
- Functionality: Choose furniture that suits the functions you have in mind.
- Color Palette: Embrace a light and airy color scheme that reflects the season. Whites, pastels, and natural shades like blues, greens, and sandy tones work well for summer. Bright accents can add a pop of color.
- Natural Elements: Incorporate natural elements into your decor. Consider wooden furniture, jute or sisal rugs, and potted plants to create a fresh, organic atmosphere.
- Outdoor Dining
- Outdoor Lighting: Enhance the ambiance with outdoor lighting.
- Storage: Include storage solutions.
- Ventilation: Ensure good ventilation to keep the space cool.
- Low-Maintenance Landscaping
- Privacy
- Entertainment: If you plan on entertaining guests, consider adding outdoor speakers, a barbecue grill, or even a small outdoor kitchen to make the space more functional and enjoyable.









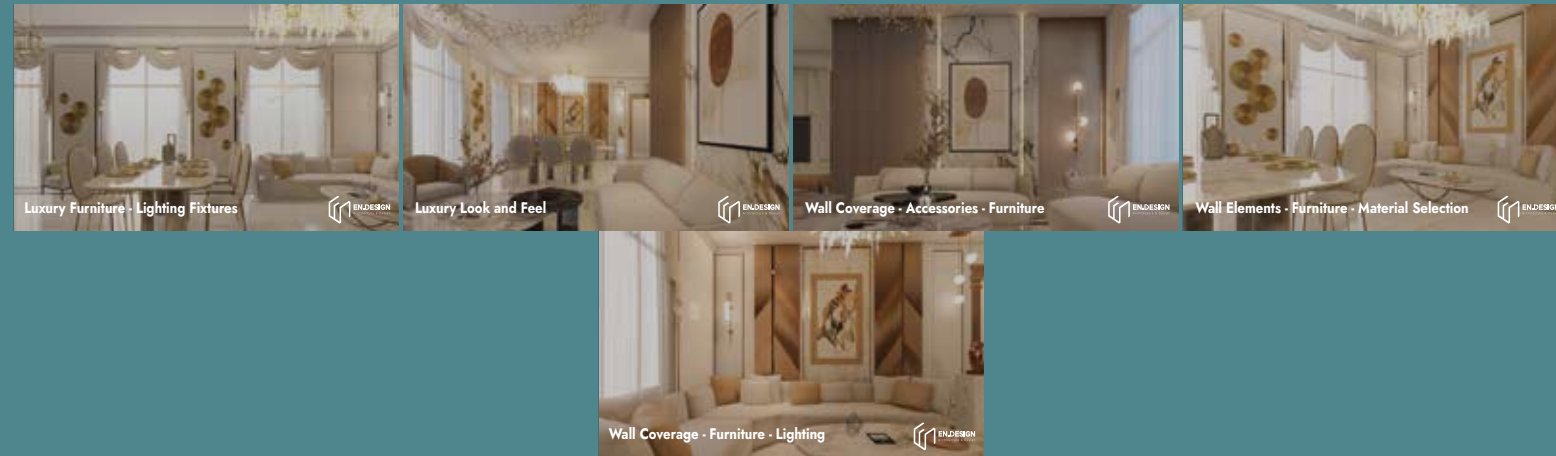
# 02

# Residential

|                |         |
|----------------|---------|
| Client         | X       |
| Size           | 110 SQM |
| Location       | KSA     |
| Duration       | 30 Days |
| EN.DESIGN Role | Design  |

## The AIM

- Furnish the living and dining space



# 02

# Residential

|                |                |
|----------------|----------------|
| Client         | H.Ghali        |
| Size           | 95 SQM         |
| Location       | South, Lebanon |
| Duration       | 30 Days        |
| EN.DESIGN Role | Design         |

## The AIM

- Furnish the living and dining space





# Exterior.03

# 03

## Exterior

|                |         |
|----------------|---------|
| Client         | X       |
| Size           | NA      |
| Location       | Vietnam |
| Duration       | 90 Days |
| EN.DESIGN Role | Design  |

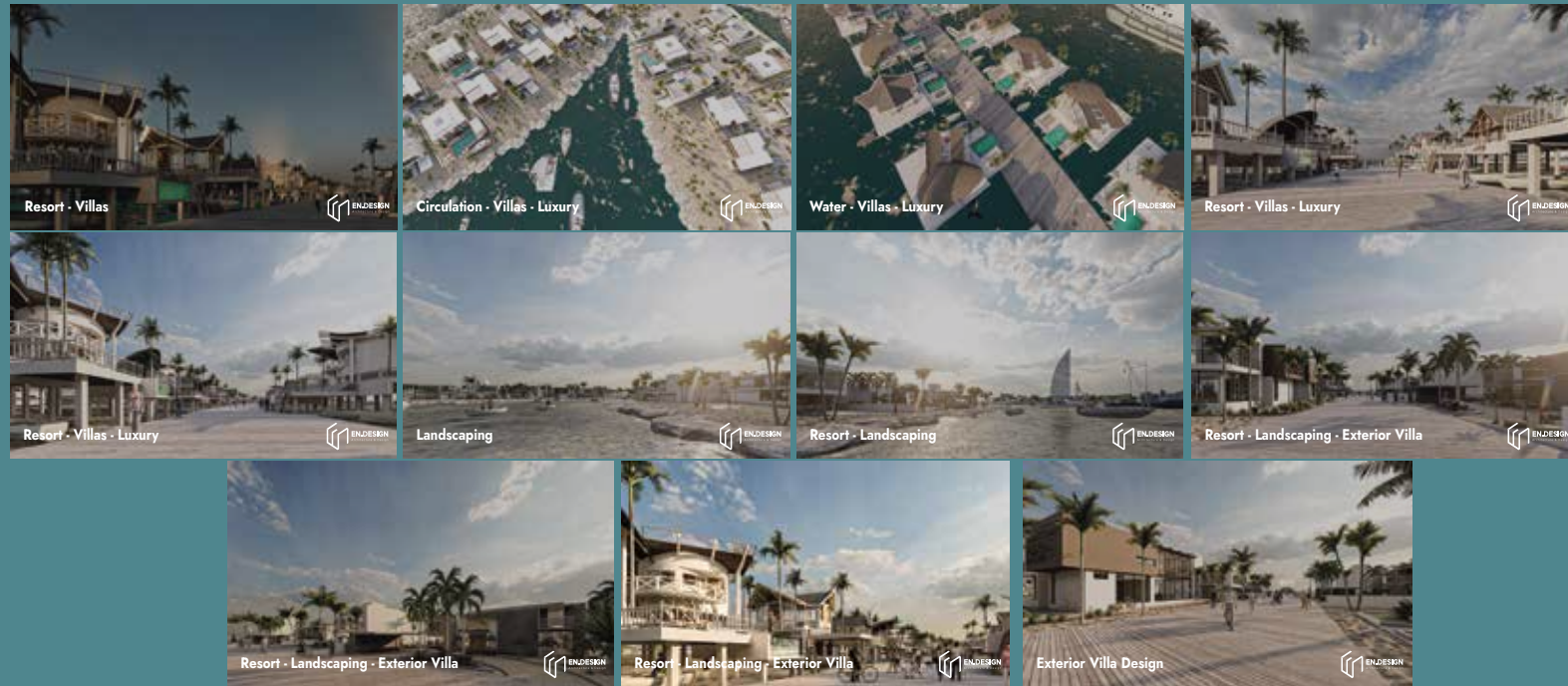
### The AIM

- Create a comfortable and appealing landscape and bungalows for tourists to enjoy.

### The Focus

Designing a resort involves careful planning and consideration of various aspects to create an enjoyable and memorable experience for your guests. Here are some key factors to focus on when designing a resort:

- Choose a picturesque, such as a beach front,
- Consider the natural surroundings, climate, and local attractions.
- Define a clear theme or concept for your resort, which could be a luxury, eco-friendly, adventure, and cultural experience.
- Master Planning: develop a master plan that outlines the layout of the resort
- Create a unique and appealing architectural design that matches your theme.
- Sustainability



# 03

## Exterior

|                |                  |
|----------------|------------------|
| Client         | X                |
| Size           | 1400 SQM         |
| Location       | Rmieleh, Lebanon |
| Duration       | 90 Days          |
| EN.DESIGN Role | Design           |

### The AIM

- Design an exterior modern house with its surrounding.

### The Focus

- Creating a sleek and contemporary look while emphasizing clean lines, open spaces.
- Minimalist architectural style that emphasizes simplicity and clean lines.
- Use a combination of materials like glass, steel, concrete, and wood to create a sleek and elegant look. Consider contrasting textures and finishes to add visual interest.
- Large Windows to allow natural light to flood the interior and provide a connection to the outdoors.
- Clean Lines and Geometric Shapes: Focus on simple, geometric shapes and lines in the design of the exterior, including the facade, landscaping, and hardscaping.
- Minimalistic Landscaping
- Reflecting pools or fountains can add a touch of modern elegance.
- Privacy Solutions
- Minimalistic Colour Palette: Stick to a neutral and minimalistic colour palette.





# 03

## Exterior

|                |                  |
|----------------|------------------|
| Client         | X                |
| Size           | 1400 SQM         |
| Location       | Aynebel, Lebanon |
| Duration       | 90 Days          |
| EN.DESIGN Role | Design           |

### The AIM

Design an exterior house with its surrounding.

### The Focus

- Creating a sleek and contemporary look while emphasizing clean lines, open spaces.
- Heritage architectural style that emphasizes simplicity and clean lines.
- Use a combination of materials like glass, steel, stone, and wood
- Large Windows to allow natural light to flood the interior and provide a connection to the outdoors.
- Complementary Landscaping
- Calm Colour Palette: Stick to a neutral and minimalistic colour palette



# 03

## Exterior

|                |                 |
|----------------|-----------------|
| Client         | X               |
| Size           | 900 SQM         |
| Location       | Rmiech, Lebanon |
| Duration       | 90 Days         |
| EN.DESIGN Role | Design          |

### The AIM

- Design an exterior heritage house with its surrounding.

### The Focus

- Creating a sleek and contemporary look while emphasizing clean lines, open spaces.
- Heritage architectural style that emphasizes simplicity and clean lines.
- Use a combination of materials like glass, steel, stone, and wood
- Large Windows to allow natural light to flood the interior and provide a connection to the outdoors.
- Complementary Landscaping
- Calm Colour Palette: Stick to a neutral and minimalistic colour palette.



# Commercial.04



# 04 Commercial.04

|                |                           |
|----------------|---------------------------|
| Client         | TELECEL                   |
| Size           | 1500 SQM                  |
| Location       | Sin el Fil, Lebanon       |
| Duration       | 50 Days                   |
| EN.DESIGN Role | Design and Execution File |

## The AIM

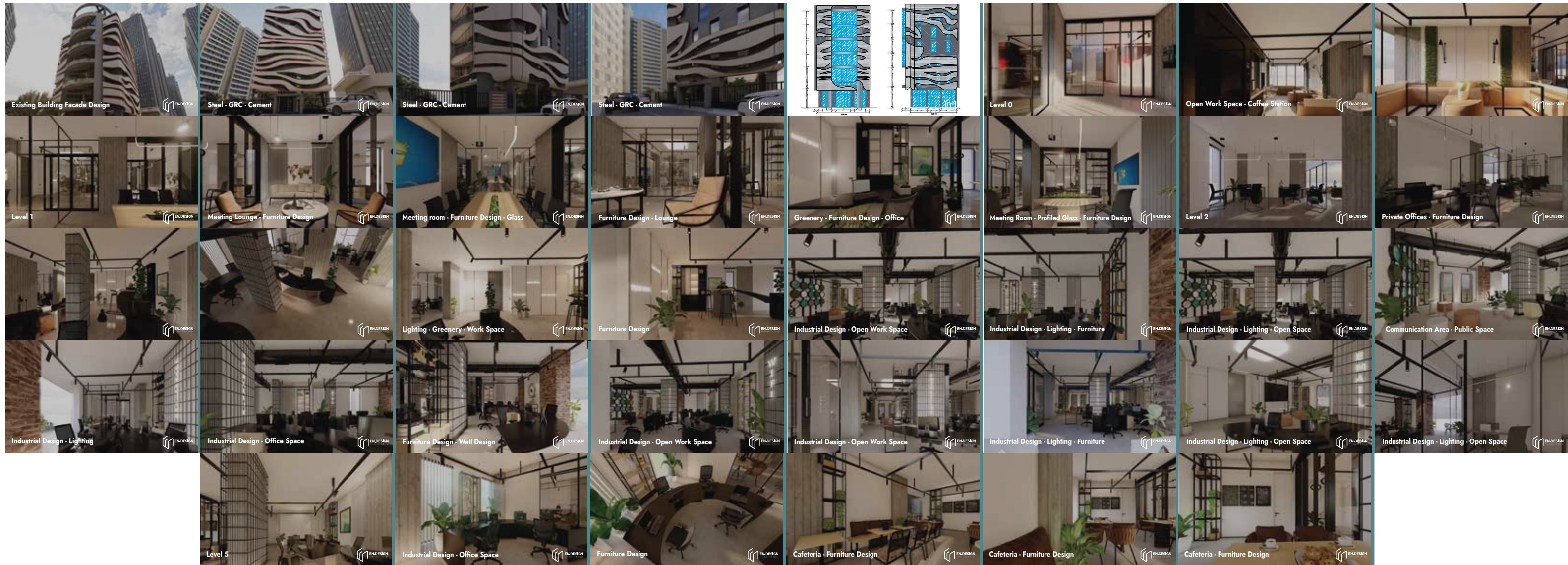
- Design an industrial theme commercial building.

## The Focus

- Low Budget material
- Minimal Design
- Industrial Theme
- Open space
- Minimal closed space









# 04 Commercial.04

|                |                  |
|----------------|------------------|
| Client         | Clothing Brand X |
| Size           | 130 SQM          |
| Location       | West, Lebanon    |
| Duration       | 90 Days          |
| EN.DESIGN Role | Design           |

## The AIM

- Design a bold and modern men clothing shop.

## The Focus

Designing a men's clothing shop requires careful consideration of various elements to create an appealing and functional retail space.

- Brand Identity: Ensure that your store's design reflects your brand identity and values. Your store's interior should communicate the style and vibe you want to convey.
- Layout and Space Planning: Consider factors like the placement of clothing racks, display areas, and checkout counters.
- Lighting: Lighting plays a crucial role in highlighting clothing and creating the right ambiance.
- Display
- Signage: Use clear and attractive signage to guide customers and showcase branding.
- Flooring Choose durable and easy-to-clean flooring materials that match the store's aesthetic.
- Comfortable Seating

Ultimately, the key is to create a welcoming and visually appealing environment that resonates with your target customers and encourages them to explore your men's clothing offerings.





**THANK YOU**

